

MCHOSE X75 Three Mode Mechanical Keyboard User Guide

MCHOSE 迈从®

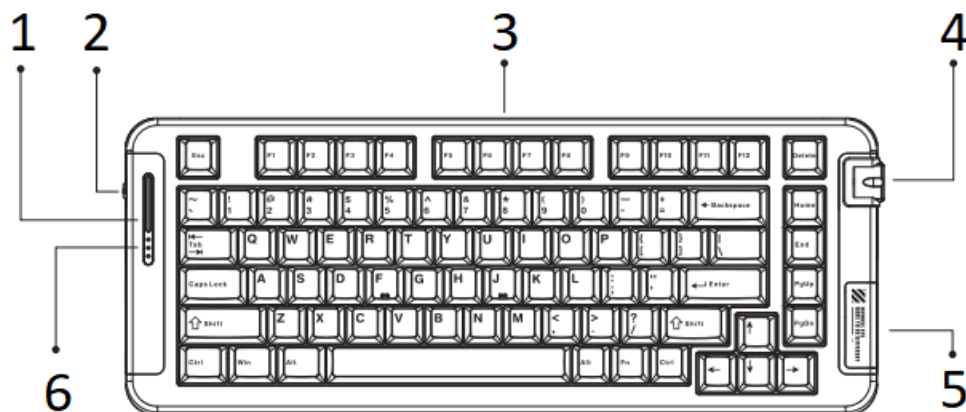
X75 User Guide

Three-mode mechanical keyboard



Warm tip: After receiving the goods, please fully charge before use

- X75 three-mode keyboard function description



1. RGB atmosphere light/power indicator
2. Mode switch:
 1. The top represents 2.4G mode
 2. Intermediate representation wireless mode
 3. USB wired mode at the bottom
3. TYPE – C port
4. Multimedia knob
 - Clockwise volume +
 - Counterclockwise volume –
 - Press to mute
5. Metal magnetic nameplate
 - Hidden storage receiver
6. Indicate from top to bottom:
 1. CAP indicator

2. SCR indicator
3. Lock the WIN indicator

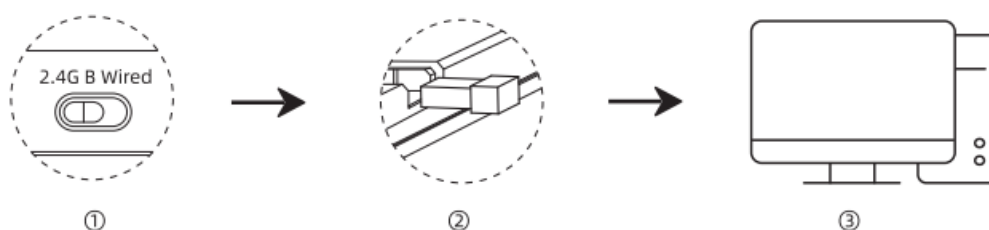
Keyboard off: You need to switch the left side of the keyboard to the wired mode, and unplug the port connection, you can shut down.

Keyboard return rate: Wired mode 1000Hz, 2.4G mode 1000Hz, wireless mode 125Hz.

Tips: The pictures in this manual are schematic drawings, here may be deviation from the real thing, please refer to the real thing.

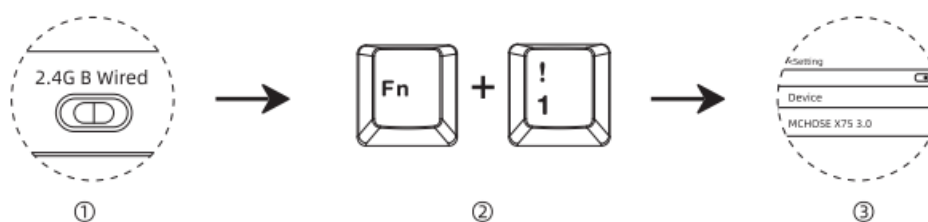
- 2.4G connection – Hot swappable

· Manual code alignment: Switch to 2.4G mode on the left side, and then long press FN+ '~ key for 3 seconds, the cyan light will flash into the code alignment state, at this time, the USB receiver will be inserted into the computer port, the cyan light will be on for 2s, and the 2.4G link will be successful. The code alignment is complete.(Factory default has been coded)



- (1) Switch to [2.4G] mode
- (2) Remove [USB receiver] from the lower light corner of the keyboard.
- (3) Plug it into the USB port of the computer and use it

- Wireless connection

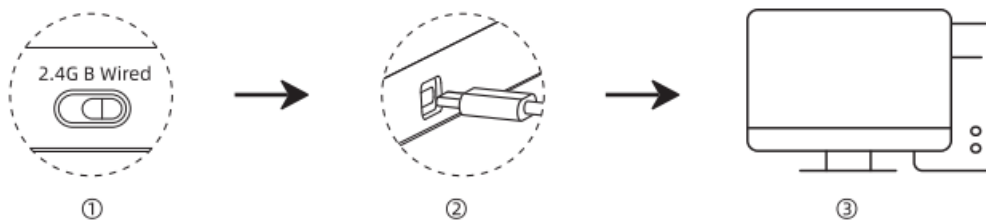


- (1) switch to [B] mode
- (2) Press the key combination to switch to B1 and hold down About 3s until blue lights flash into pairing
- (3) Search for matching name [MCHOSE X75 3.0] Or [MCHOSE X75 5.0], the connection was successful when the blue indicator is on for 2 seconds, turn off the indicator

The pairing names of wireless channels 1, 2, and 3 are (MCHOSE X75 3.0 or MCHOSE X75 5.0)

- Long press the 3 combination key Fn+ number key 1, 2 or 3, and the blue light flashes quickly, indicating that the keyboard enters the code matching or search mode, and you can pair and connect in the device;
- Press the combination key Fn+ number key 1, 2 or 3 to switch devices.

- Wired connection – Hot swappable



- (1) Switch to [Wired] mode.
- (2) Connect one end of the standard USB Type-C cable to the corresponding port on the keyboard
- (3) Plug the USB end of the cable into the corresponding port on the computer

- Power saving mode

2.4G/ Wireless mode in one minute without any operation will automatically enter the power saving mode (light off), click the key to wake up the keyboard.

- Light effect instructions

- Fn+ \backslash / key combination switch 15 kinds of RGB light effects and close a total of 16 kinds of light effects: drift (restore the default rear light effect), shadow, sinusoidal light wave, rotating windmill, colorful waterfall, flowers, game mode, off, steady on mode, breathing mode, dream rainbow, trigger, walk in the rain, key ripples, stars, flow.
- Cooperate with driving with music rhythm RGB light effect, there are 10 light effect modes to choose from under this light effect.
- Wired mode and 2.4G mode cooperate to drive each key with custom function and macro definition. The drive can be customized in more than 16 million colors.

- Power saving mode

Press and hold FN to view:

Current connection mode (2.4, wireless, wired); Current wireless channel (channels 1,2,3)

Current system mode (Android, WIN, Mac)

The above corresponding buttons will light up, release to restore the light effect.



- 2.4G mode indicator: “~” key
- Wireless channel indicator: “1,2,3” keys
- Wired mode indicator: “4” key
- System mode indicator: “Q,W,E” key

- Fn Combination function description

F N +	ESC	1	2	3	Q	W	E
	Restore default settings (Hold for 3s)	Wireless device 1	Wireless device 2	Wireless device 3	Android System	Windows System	Mac System
	‘~	\	Tab	↑	↓	←	→
	2.4G alignment (Hold for 3s)	Switch Backlight mode	Switch Backlight color	Backlight Brightness +	Backlight Brightness –	Backlight Speed +	Backlight Speed –
	Right Shift	/?	Right Alt	Right Ctrl	B	Z	Left Shift
	Change the side light mode	Switch side light colors	Cycle switch side light	Cycle switch side light speed	Switch light to power mode	Switch Light to colors	Switch Light lighting mode
	Win	U	I	O	Del		
	Lock Win	PRTSC	SCRLK	PAUSE	INS		

- Fn+Win= Lock/unlock the Win key (in the Windows system, the indicator is on when the Win key is locked, and the Win key cannot be used).
- In the Windows system, if you switch to the Mac system mode, the Win and left Alt keys will be switched, and F1-F12 is the multimedia key function.
- In 2.4G/ Wireless mode (no USB is inserted), RGB atmosphere light bar can display FN+B keyboard power, full power green display, with power consumption, green gradually decreases, low power red indicator.
- Fn+1= Wireless device 1, short press to switch, long press 3s pairing.
- Fn+2= Wireless device 2, short press to switch, long press 3s pairing.
- Fn+3= Wireless device 3, short press to switch, long press 3s pairing.

- Android system F area single press function and F area FN combination function

Key	F1	F2	F3	F4	F5	F6
Single press	Screen brightness –	Screen brightness +	Transfer window	Back to desktop	Brightness –	Brightness +
Fn +	F1	F2	F3	F4	F5	F6

Key	F7	F8	F9	F10	F11	F12
Single press	Previous song	Play/Pause	Next song	Sound off	Volume –	Volume +
Fn +	F7	F8	F9	F10	F11	F12

- Windows system F area single by function and F area FN combination function

Key	F1	F2	F3	F4	F5	F6
Single press	F1	F2	F3	F4	F5	F6
Fn +	Home page	Mail	Transfer window	Open the Explorer	Brightness –	Brightness +

Key	F7	F8	F9	F10	F11	F12
Single press	F7	F8	F9	F10	F11	F12
Fn +	Previous song	Play/Pause	Next song	Sound off	Volume –	Volume +

- Mac system F area single press function and F area FN combination function

Key	F1	F2	F3	F4	F5	F6
Single press	Screen brightness –	Screen brightness +	Transfer window	Back to desktop	Brightness –	Brightness +
Fn +	F1	F2	F3	F4	F5	F6

Key	F7	F8	F9	F10	F11	F12
Single press	Previous song	Play/Pause	Next song	Sound off	Volume –	Volume +
Fn +	F7	F8	F9	F10	F11	F12

* In Windows, the Win and left Alt keys will be swapped after switching to Mac.

- Specification parameters

Model: X75

Rated voltage: DC 5V

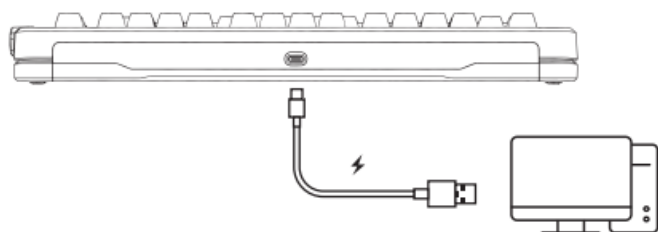
Battery capacity: 4000mAh rechargeable lithium battery

Charging voltage/current: DC 5V 1.5A

Transmission mode: Wireless /2.4G/ wired

Charging port: Type-C port

- Charging instructions



- Connect the keyboard to the computer via the equipped USB cable to charge the keyboard. Charging RGB ambient light strip streamer display, full of long bright green.
- In 2.4G/ Wireless mode (no USB is inserted), RGB atmosphere light bar can display FN+B keyboard power, full power green display, with power consumption, green gradually decreases, low power red indicator.

NOTE: This equipment has been tested and found to comply with the limits for a Class B digital device, pursuant to part 15 of the FCC Rules. These limits are designed to provide reasonable protection against harmful interference in a residential installation. This equipment generates, uses and can radiate radio frequency energy and, if not installed and used in accordance with the instructions, may cause harmful interference to radio communications. However, there is no guarantee that interference will not occur in a particular installation. If this equipment does cause harmful interference to radio or television reception, which can be determined by turning the equipment off and on, the user is encouraged to try to correct the interference by one or more of the following measures:

- Reorient or relocate the receiving antenna.
- Increase the separation between the equipment and receiver.
- Connect the equipment into an outlet on a circuit different from that to which the receiver is connected.
- Consult the dealer or an experienced radio/TV technician for help.

Changes or modifications not expressly approved by the party responsible for compliance could void the user's authority to operate the equipment.

This device complies with Part 15 of the FCC Rules. Operation is subject to the following two conditions: (1) this device may not cause harmful interference, and (2) this device must accept any interference received, including interference that may cause undesired operation.



INSTRUCTIONS FOR CHARGING



1. It is recommended to charge the keyboard only using the USB interface of the computer;
2. Do not use the fast charger to charge the keyboard;
3. Do not use poor quality non-standard power adapter to charge the keyboard;
4. Do not use the overvoltage and overcurrent power adapter to charge the keyboard;
5. Keep away from high temperature devices when charging;
6. Turn off the power switch when not in use for a long time.

The above charging instructions also apply to other devices with charging function (keyboard/mouse/headset/speaker, etc.)

WARRANTY CARD

Thank you for buying our products, please contact us if any quality problems occur during the warranty period. Please provide this warranty card when contacting, so that we can provide you with perfect after-sales service.

Product Model: _____ User Name: _____
Factory No. : _____ Warranty address: _____
Purchase Date: _____ Warranty Contact: _____
Purchase Address: _____ Contact Number: _____
Sales clerk: _____ Mail editor: _____

○
CERTIFICATE
OF
APPROVAL

Name: Mechanical keyboard
Model: X75
inspector: _____

QC
PASS
检11

Delivery date	2023	1	2	3	4	5	6	7	8	9	10	11	12
	2024	1	2	3	4	5	6	7	8	9	10	11	12

Executive standard: GB4943.1-2022

Contents

- 1 Documents / Resources
- 1.1 References

Documents / Resources



[MCHOSE X75 Three Mode Mechanical Keyboard](#) [pdf] User Guide
X75 Three Mode Mechanical Keyboard, X75, Three Mode Mechanical Keyboard, Mode Mechanical Keyboard, Mechanical Keyboard, Keyboard

References

- [User Manual](#)

[Manuals+](#), [Privacy Policy](#)

This website is an independent publication and is neither affiliated with nor endorsed by any of the trademark owners. The "Bluetooth®" word mark and logos are registered trademarks owned by Bluetooth SIG, Inc. The "Wi-Fi®" word mark and logos are registered trademarks owned by the Wi-Fi Alliance. Any use of these marks on this website does not imply any affiliation with or endorsement.