

MCHOSE
GX87 Function Card



MCHOSE GX87 Function Card Instructions

[Home](#) » [MCHOSE](#) » MCHOSE GX87 Function Card Instructions 

Contents

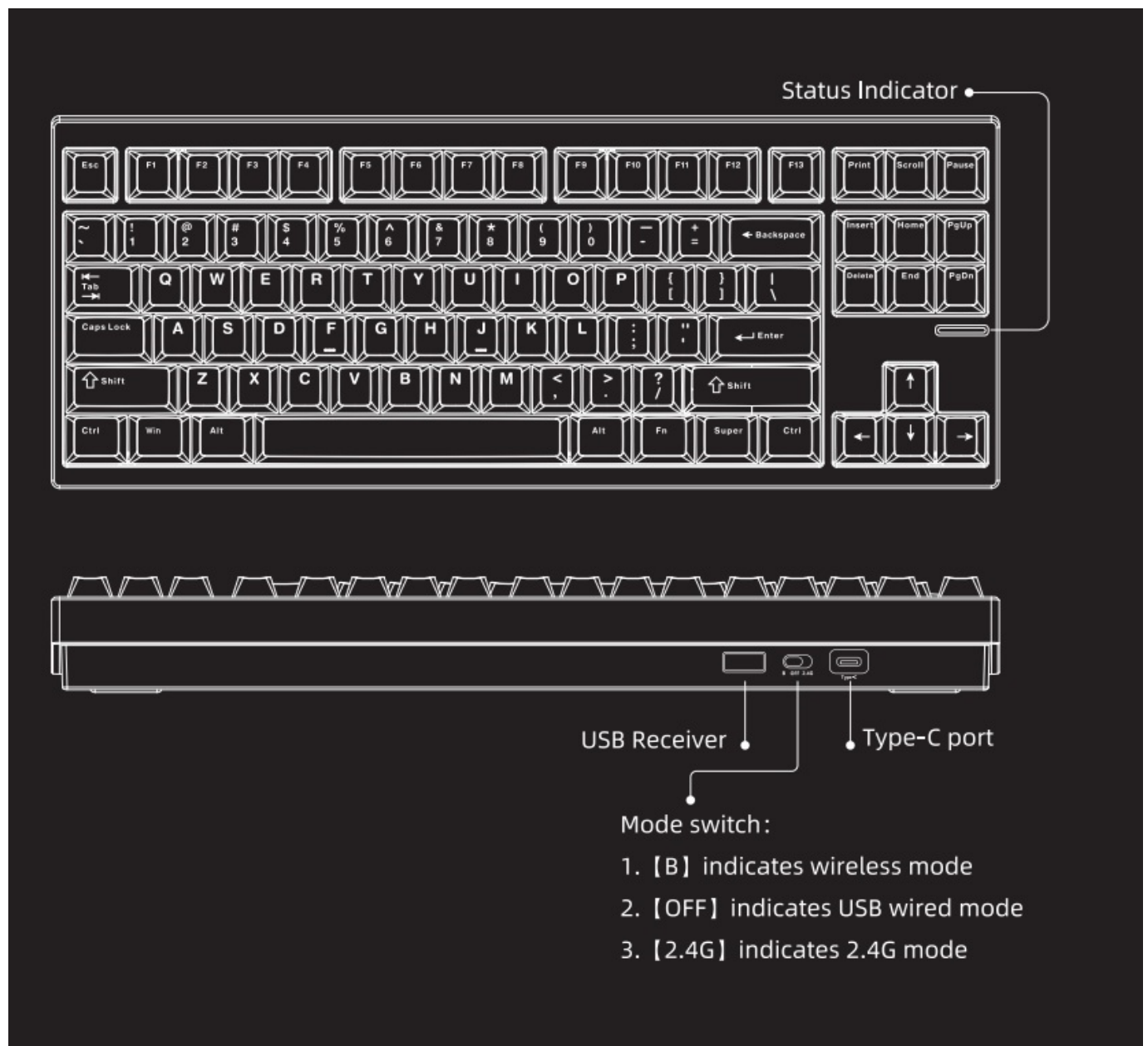
- [1 MCHOSE GX87 Function Card](#)
- [2 MCHOSE GX87 Handy Guide](#)
- [3 System mode switch](#)
- [4 Backlight setting](#)
- [5 Status indicator light setting](#)
- [6 Wireless connection](#)
- [7 Wired connection](#)
- [8 Documents / Resources](#)
 - [8.1 References](#)

MCHOSE

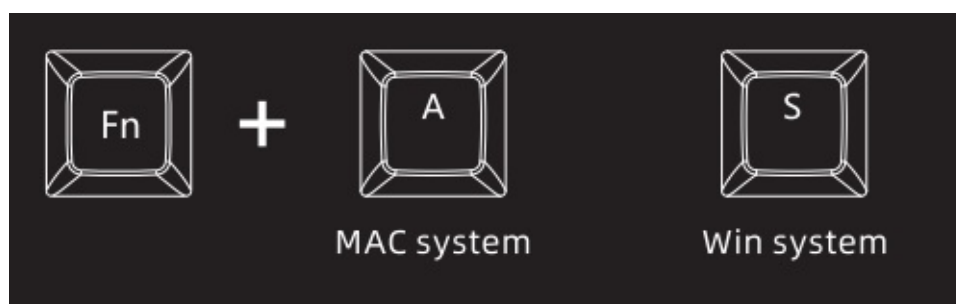
MCHOSE GX87 Function Card



MCHOSE GX87 Handy Guide



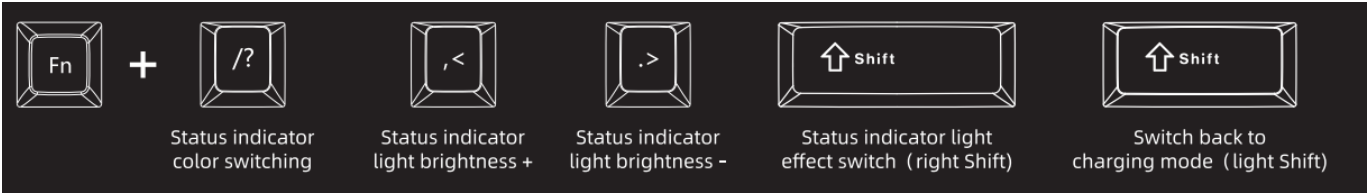
System mode switch



Backlight setting

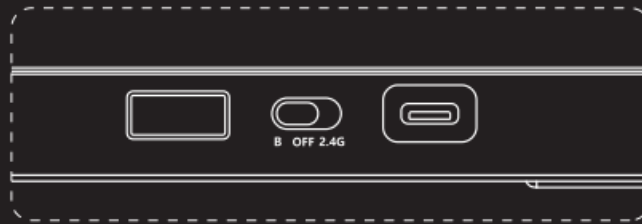


Status indicator light setting



Wireless connection

•Wireless connection



① Switch to [B] mode.

Note: The connection methods of wireless 2 and wireless 3 are the same as wireless 1.

For wireless 2, you can press the key combination [Fn+E] .

For wireless 3, you can press the key combination [Fn+R] .

•2.4G connection



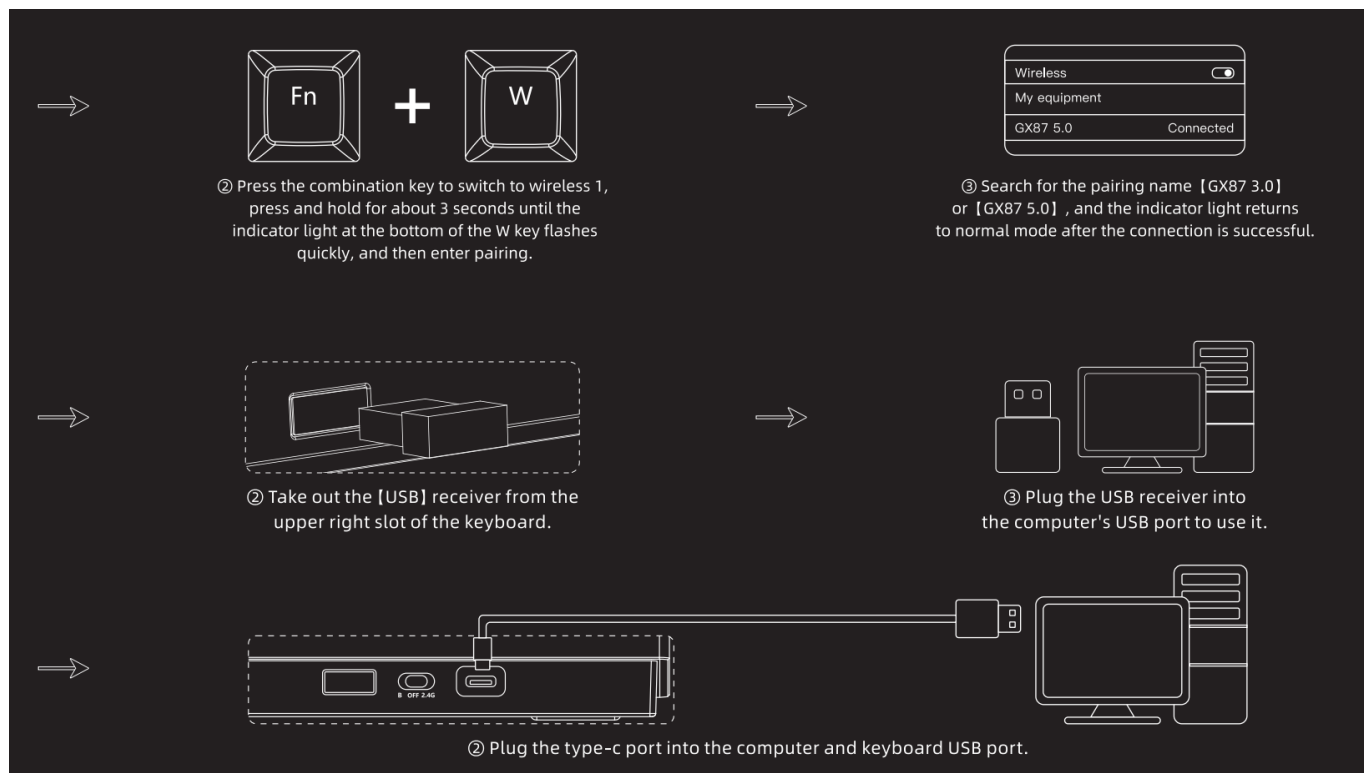
① Switch to [2.4G] mode.

•Wired connection



① Switch to [OFF] mode.

Wired connection



For more other functions, please refer to the User Guide. Switch replacement tutorial, please visit:
https://youtu.be/1c30_THpHTM

Documents / Resources

	MCHOSE GX87 Function Card [pdf] Instructions GX87 Function Card, GX87, Function Card, Card
--	---

References

- [User Manual](#)

[Manuals+](#), [Privacy Policy](#)

This website is an independent publication and is neither affiliated with nor endorsed by any of the trademark owners. The "Bluetooth®" word mark and logos are registered trademarks owned by Bluetooth SIG, Inc. The "Wi-Fi®" word mark and logos are registered trademarks owned by the Wi-Fi Alliance. Any use of these marks on this website does not imply any affiliation with or endorsement.