

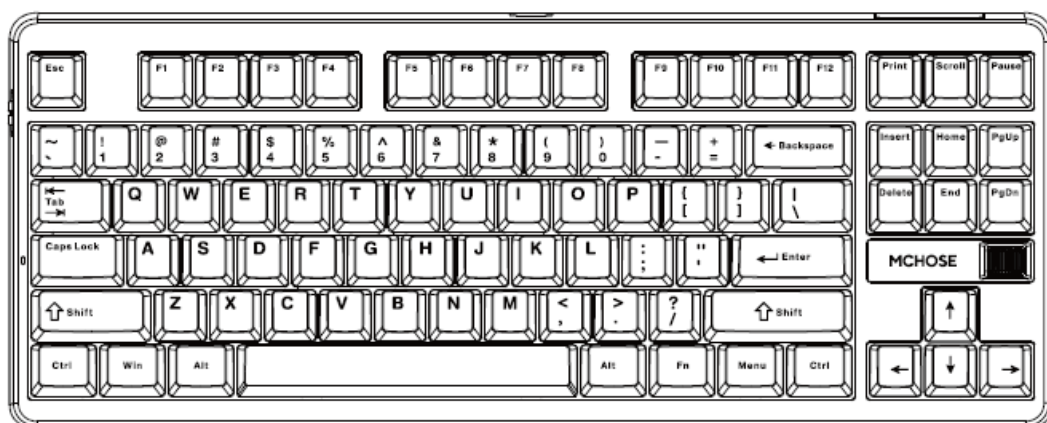
# MCHOSE G87 Tri Mode Mechanical Keyboard User Manual

[Home](#) » [MCHOSE](#) » MCHOSE G87 Tri Mode Mechanical Keyboard User Manual 

## Contents

- 1 MCHOSE G87 Tri Mode Mechanical Keyboard
- 2 TRI MODE MECHANICAL KEYBOARD
  - 2.1 1. Indicator Lights:
  - 2.2 2. WiniMac Mode
- 3 2.4GHz WIRELESS CONNECTION
- 4 WIRELESS CONNECTION
- 5 WIRED CONNECTION
- 6 LIGHTING FUNCTIONS
- 7 WINDOWS SYSTEM
- 8 MAC SYSTEM
- 9 BATTERY MANAGEMENT
- 10 CHARGING INSTRUCTION
- 11 WARRANTY CARD
- 12 Documents / Resources
  - 12.1 References
- 13 Related Posts

## MCHOSE G87 Tri Mode Mechanical Keyboard

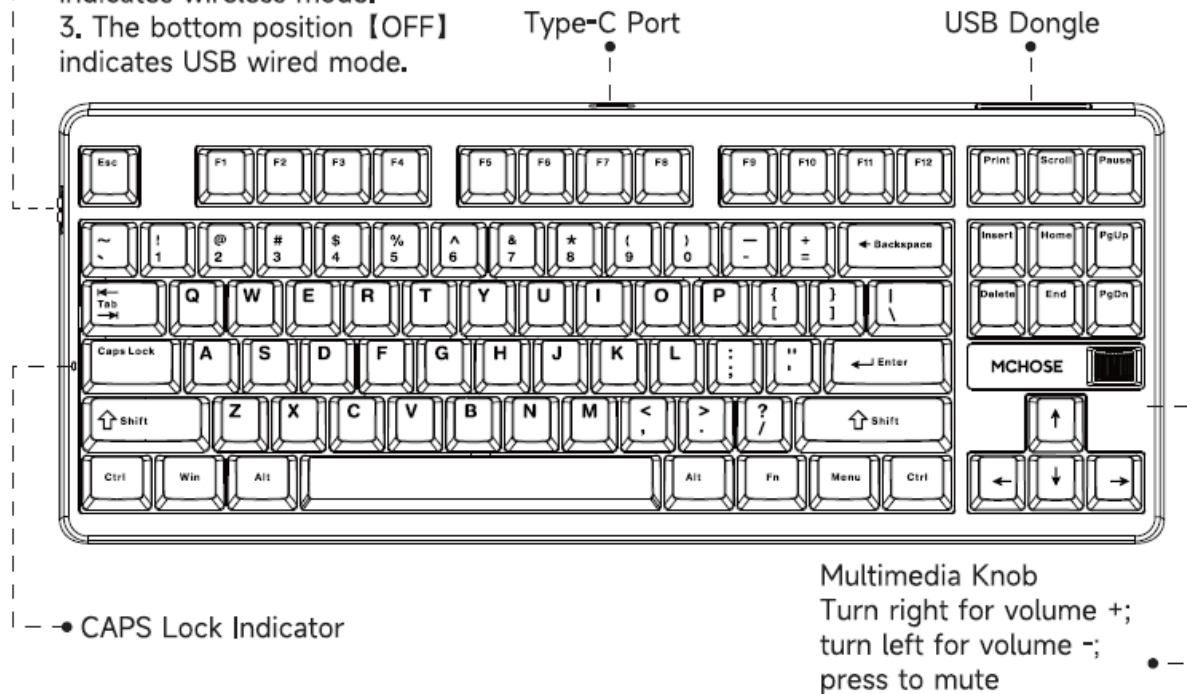


## USER MANUAL

### TRI MODE MECHANICAL KEYBOARD

Mode Switch:

1. The top position [2.4G] indicates 2.4G mode.
2. The middle position [B] indicates wireless mode.
3. The bottom position [OFF] indicates USB wired mode.



#### 1. Indicator Lights:

(CAPS Indicator: The CAPS lock indicator shows the status of uppercase letters. It remains on when Caps Lock is active.

WIN Indicator: The WIN key indicator shows the status of the WIN key lock. It remains on when the WIN key is locked, and the WIN key will be disabled during this time.

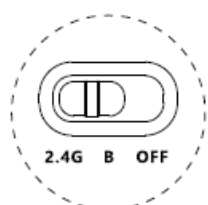
#### 2. WiniMac Mode

FN+W = Windows Mode

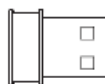
FN+VE = Mac Mode, ALT key acts as the Command key, FN+F1-F12 functions as the standard F1-F12 keys.

In Windows mode, switching to Mac mode will swap the Win key and left Alt key, and F1-F12 will function as multimedia keys.

### 2.4GHz WIRELESS CONNECTION



① Set the switch mode to [2.4G].



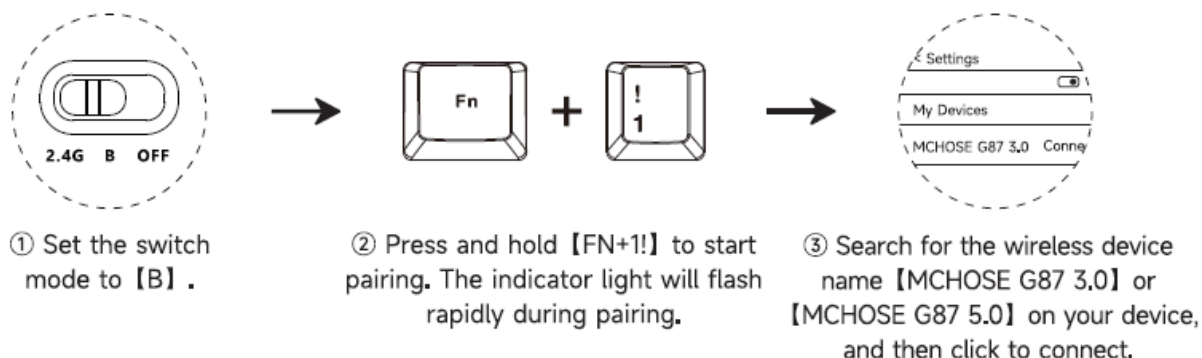
② Take out the dongle from the storage slot.



③ Insert the dongle into the USB port of your computer.

Manual pairing (pre-paired at the factory!): Press and hold [FN+-] for 3 seconds until the indicator light flashes rapidly, then insert the dongle into the computer's USB port. The indicator will stay on for 2 Seconds once the connection is successful.

## WIRELESS CONNECTION



Press (N1, [FN+26], or [FN#3#] to switch between devices.

## WIRED CONNECTION



Set the switch mode to [OFF] , Insert the Type-C end of the USB cable into the corresponding port on the keyboard. Insert the USB end of the cable into the corresponding port on your computer to start using.

### Web Driver

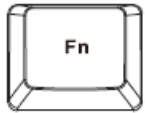
Note: Open the <http://www.mchoso.e> in a browser, click [inititalize Device] | then [Allow Browser Access] , and select the corresponding product model to connect.

Desktop Driver: Visit MCHOSE Official Store: [www.mchoso:store](http://www.mchoso:store)

Click [Drivers& Firmwares] . Select the corresponding product model, then click the driver to download and install.

Note: The desktop driver is only compatible with Windows systems

## LIGHTING FUNCTIONS



+

ESC	Press and hold for 3 seconds to restore default settings
INS	Switch lighting modes
DEL	Switch lighting colors
↑	Lighting brightness+
↓	Lighting brightness-
←	Lighting speed-
→	Lighting speed+
B	Check keyboard battery level

## WINDOWS SYSTEM

Key	F1	F2	F3	F4	F5	F6
Press the single key	F1	F2	F3	F4	F5	F6
Press with FN combination key	Homepage	Mail	Switch Window	File Explorer	Lighting Brightness-	Lighting Brightness+

Key	F7	F8	F9	F10	F11	F12
Press the single key	F7	F8	F9	F10	F11	F12
Press with FN combination key	Previous song	Play / Pause	Next Song	Mute	Volume-	Volume+

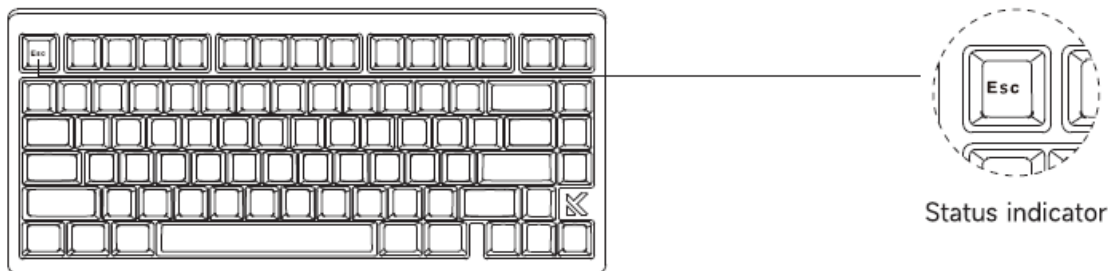
## MAC SYSTEM

Key	F1	F2	F3	F4	F5	F6
Press the single key	Screen Brightness-	Screen Brightness+	Switch Window	Return to Desktop	Lighting Brightness-	Lighting Brightness+
Press with FN combination key	F1	F2	F3	F4	F5	F6

Key	F7	F8	F9	F10	F11	F12
Press the single key	Previous song	Play / Pause	Next Song	Mute	Volume-	Volume+
Press with FN combination key	F7	F8	F9	F10	F11	F12

## BATTERY MANAGEMENT



## 1. BATTERY STATUS

In 246/ Wireless mode when USB is not connected), press PN+ to display the keyboard's battery level. All other backlighting will turn off, and releasing FN+8 will restore the lighting effects. When fully charged, the number keys [11 – 01] will all light up green. As the battery drains, the green light will gradually decrease, and when the number keys [11 – 3#] turn red, it indicates low battery.

## 2. CHARGING METHOD

In any mode, connect the keyboard to your computer with the provided cable to charge the keyboard. When the battery is low, the [Esc] key will flash red. While charging, the [Esc] key will stay red. Once fully charged, the [Esc] key will return to its normal lighting effect.

## 3. SLEEP FUNCTION

By default, the keyboard will enter sleep mode after one minute of inactivity. Press any key to wake up the keyboard.

Note: This device has been tested and complies with the limits for Class B digital devices under Part 15 of the FCC Rules. These limits are designed to provide reasonable protection against harmful interference in residential installations.

This device generates, uses, and can radiate radio frequency energy, and if not installed and used in accordance with the instructions, may cause harmful interference to radio communications.

However, there is no guarantee that interference will not occur in a particular installation.

If this device does cause harmful interference to radio or television reception (which can be determined by turning the device off and on), we encourage the user to try one or more of the following measures to correct the interference:

- Reorient or relocate the receiving antenna.
- Increase the separation between the equipment and the receiver.
- Connect the equipment to an outlet on a circuit different from that to which the receiver is connected.
- Consult the dealer or an experienced radio/TV technician for help.

Changes or modifications not expressly approved by the responsible party could void the user's authority to operate the equipment.

This device complies with Part 15 of the FCC Rules. Operation is subject to the following two conditions:

- (1) This device may not cause harmful interference.

(2) This device must accept any interference received, including interference that may cause undesired operation.

## CHARGING INSTRUCTION

1. IT IS recommended to charge the keyboard using the computer's USB port any.
2. Do not use fast-charging phone chargers to charge the keyboard
3. Do not use low-quality, non-standard power adapters to charge the keyboard
4. Do not use over-voltage or over-current power adapter to charge the keyboard
5. Keep the keyboard away from high-temperature device while charging, & Turn off the power switch if the device is not to be used for an extended period.

## WARRANTY CARD

Thank you for purchasing our product. Please contact us if there are any quality issues within the warranty period. Please provide this warranty card so we can provide comprehensive after-sales service.

Product Items: \_\_\_\_\_

Customer Name: \_\_\_\_\_

Serial NO. : \_\_\_\_\_

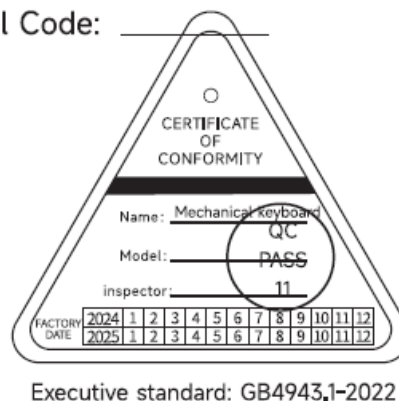
Contact Address: \_\_\_\_\_

Purchase Date: \_\_\_\_\_


TEL / E-mail: \_\_\_\_\_

Purchase Channel: \_\_\_\_\_

Postal Code: \_\_\_\_\_



## Documents / Resources

	<a href="#">MCHOSE G87 Tri Mode Mechanical Keyboard [pdf] User Manual</a> 2BERM-G87, 2BERMG87, g87, G87 Tri Mode Mechanical Keyboard, G87, Tri Mode Mechanical Keyboard, Mechanical Keyboard, Keyboard
-------------------------------------------------------------------------------------	-----------------------------------------------------------------------------------------------------------------------------------------------------------------------------------------------------------

## References

- [User Manual](#)

## **Manuals+. Privacy Policy**

This website is an independent publication and is neither affiliated with nor endorsed by any of the trademark owners. The "Bluetooth®" word mark and logos are registered trademarks owned by Bluetooth SIG, Inc. The "Wi-Fi®" word mark and logos are registered trademarks owned by the Wi-Fi Alliance. Any use of these marks on this website does not imply any affiliation with or endorsement.