

MCHOSE
G75 Pro
Mechanical
Keyboard



MCHOSE G75 Pro Mechanical Keyboard User Manual

[Home](#) » [MCHOSE](#) » MCHOSE G75 Pro Mechanical Keyboard User Manual 

Contents

- 1 [MCHOSE G75 Pro Mechanical Keyboard](#)
- 2 [Switch Made](#)
- 3 [2.4GHZ CONNECTION](#)
- 4 [WIRELESS CONNECTION](#)
- 5 [FN KEY COMBINATION DESCRIPTION](#)
 - 5.1 [CHARGING INSTRUCTIONS](#)
 - 5.2 [SPECIFICATIONS](#)
 - 5.3 [FCC STATEMENT](#)
 - 5.4 [WARRANTY CARD](#)
- 6 [Documents / Resources](#)
 - 6.1 [References](#)
- 7 [Related Posts](#)

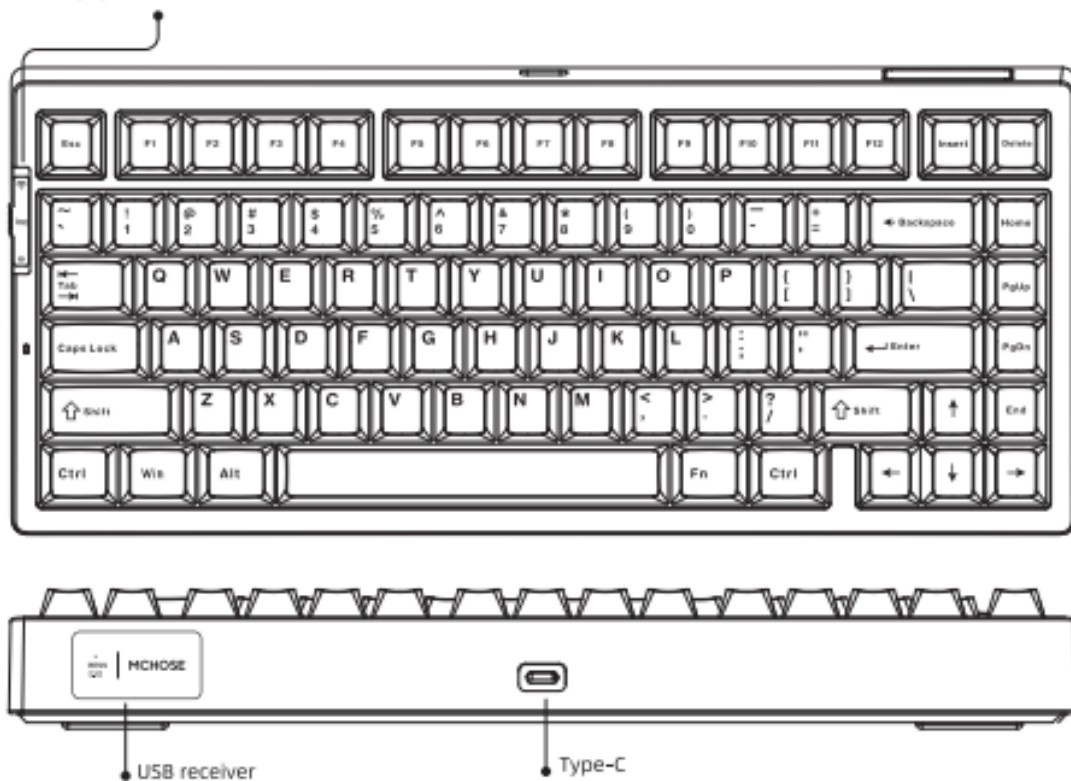
MCHOSE

MCHOSE G75 Pro Mechanical Keyboard



Switch Made

1. [📶] 2.4Ghz mode
2. [🔌] Wired mode
3. [B] Wireless mode



- **How to shut down:** Switch to [🔌] wired mode and unplug the port connection.
- **Keyboard return rate:** wired mode 1000Hz, 2.4G mode 1000H2, wireless mode 125Hz.
- **Note:** The images in this manual are schematic diagrams and might be different from the actual product.

Please refer to the actual product for accuracy.

2.4GHZ CONNECTION



① Switch to [Wi-Fi] 2.4Ghz mode



② Remove the USB receiver from the rear slot of the keyboard



③ Plug into the computer USB port to use

Manual code pairing: Turn the switch to the (**wifi**) 2.4ghz mode, and press the combination key **FN** until the bottom indicator Manual code pairing. Turn the switch to the 2.4ghz mode, press the combination key until the bottom indicator light flashes quickly to enter the code pairing state. At this time, insert the USB receiver into the computer port, and the (~) key will turn up for 8 seconds. The 2.4ghz connection is successful, and the code pairing is completed.

- **Note:** First, put the keyboard into 2.4ghz coding mode, and then insert the USB receiver into the computer. When coding, the keyboard needs to be placed close to the receiver.

WIRELESS CONNECTION



① Switch to [B] mode

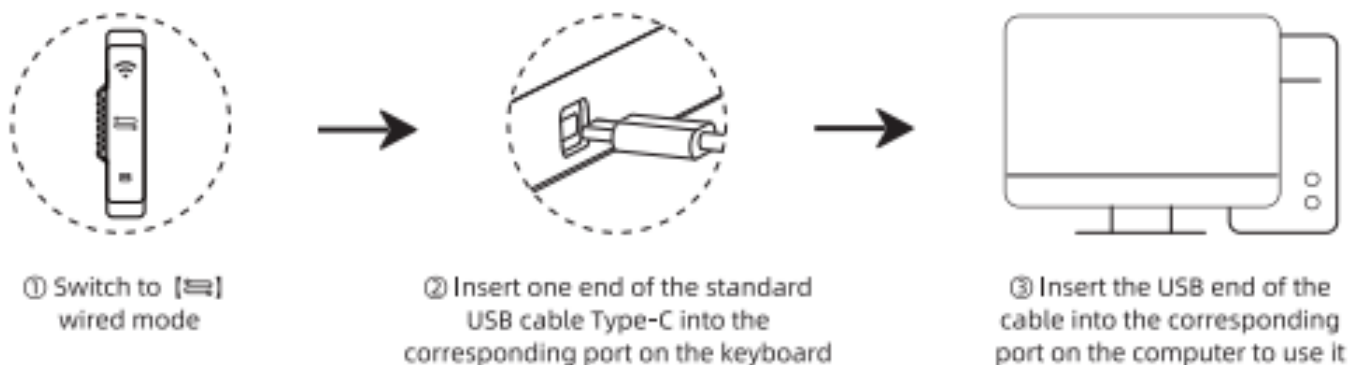


② Press the combination key to switch to wireless 1, hold down for about 3 seconds until the bottom indicator light flashes quickly to enter pairing

③ Search for pairing name [MCHOSE G75 Pro] successful connection indicator light restored to normal mode

- The pairing names for wireless channels 1, 2, and 3 are all MCHOSE 675 Pro I
- The combination key for wireless channel 2 is Fn+F2: The combination key for wireless channel 3 is Fn+F3.
 - Press the combination key for about 3 seconds until the corresponding channel indicator light flashes quickly, indicating that the keyboard has entered pairing or search mode, and can be paired and connected to the device.
- Press the combination keys (Fn+F1), (Fn+F2), and (Fn+F3) to switch devices.

WIRED CONNECTION



POWER SAVING MODE

The keyboard automatically enters power-saving mode after 1 minute or more in wireless, 2.4g mode. Click the button to wake up the keyboard.

RGB LIGHT

Following the flow (restoring default lighting effects), following the crowd like a shadow, sinusoidal light waves, spinning windmills, colorful waterfalls, blooming flowers and wealth, game mode, oft, constanttught mode, breathing mode. creamy rainbow, ready to go, stound in my rain, rainbow wheel, button ripple, starry cots, and endless stream. In conjunction with the driver's RGB lighting effect with music rhythm, there are 10 lighting modes to choose from under this lighting effect.

FN KEY COMBINATION DESCRIPTION

Fn +	Esc	A	S	1~	1!
	Long press for 3s to restore factory settings	Win system	Mac system	Long press 3S Enter the 2.4GHz paring mode	Wireless device 1
	2@	3#	↑	↓	→
	Wireless device 2	Wireless device 3	Backlight brightness+	Backlight brightness-	Backlight speed+
	←	=+	\	U	I
	Backlight speed-	Backlight color switching	Backlight mode switching	PRTSK	SCRLK
	O	Win	B		
	PAUSE	Lock/Unlock Win	Press and hold to check battery level (USB cable not inserted)		

En+win=lock/unlock win Key in Windows systems, the indicator lion remains on when the van key is locked, and the Win key cannot be used)

- In the Windows system, after switching to the Mac system. the positions of the Vin and Alt keys are swagged without locking Wini, and Fi-F12 is a multimedia button function.
- En+1: = Wireless device 1, short press to switch, lone press tor 3 seconds to pair. rites wireless device 2, short press to switch, lone press for 3 seconds to halt.

- Fn+3# Wireless device 3, short press to switch, long press for 3 seconds to pair

WINDOWS SYSTEM: FN KEY COMBINATION INSTRUCTIONS (MULTIMEDIA FUNCTIONS)

Key position	F1	F2	F3	F4	F5	F6
single press	F1	F2	F3	F4	F5	F6
Fn combination	Screen brightness -	Screen brightness +	Convert Window	Resource Manager	homepage	mailbox

Key position	F7	F8	F9	F10	F11	F12
single press	F7	F8	F9	F10	F11	F12
Fn combination	Previous song	play / Pause	Next song	Mute	volume-	volume+

MAC SYSTEM: FN KEY COMBINATION INSTRUCTIONS (MULTIMEDIA FUNCTIONS)

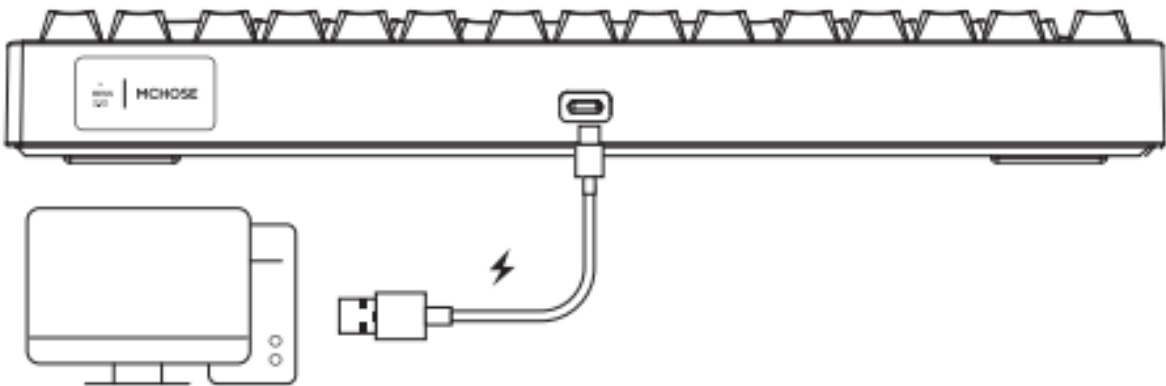
Key position	F1	F2	F3	F4	F5	F6
single press	Screen brightness -	Screen brightness +	Convert Window	Return to desktop	Search; Long press Siri	Screenshot
Fn combination	F1	F2	F3	F4	F5	F6

Key position	F7	F8	F9	F10	F11	F12
single press	Previous song	play / Pause	Next song	Mute	volume-	volume+
Fn combination	F7	F8	F9	F10	F11	F12

POWER DISPLAY

- In 2.4G/wireless mode (without USB inserted), press and hold FN+B to check the battery level.

CHARGING



Connect the keyboard to the computer through the equipped USB cable to charge the keyboard. When charging, the red light of the (ESC) button remains on, and when fully charged, it follows the current light effect.

- When the red light on the [ESC] button flashes, please charge the keyboard promptly.

CHARGING INSTRUCTIONS

1. It is recommended to only use the computer USB interface to charge the keyboard;
2. Do not use a fast-charging mobile phone charger to charge the keyboard;
3. Do not use inferior non-standard power adapters to charge the keyboard;
4. Do not use an overvoltage and overcurrent power adapter to charge the keyboard;
5. Please stay away from high-temperature equipment when charging;
6. Please turn off the power switch when not in use for a long time.

The above charging instructions also apply to other devices with charging functions (keyboard/mouse/-headphones/speakers, etc.)

SPECIFICATIONS

- **Product model:** G75 ProI
- **Connectivity:** Wireless/2.4GHz/Wired
- **Charging interface:** Type-C
- **Charging voltage/current:** DC 5V – 1.5A

FCC STATEMENT

Note. This equipment has been tested and found to comply with the requirements for a Class B digital device, under part 15 of the FCC Rules, which are designed to provide reasonable protection against harmful interference in a residential installation. This equipment generates, uses, and can radiate radio frequency energy and, if not installed and used following the instructions, may cause harmful interference to radio communications. However, there is no guarantee that interference will not occur in a particular installation. If this equipment does cause harmful interference to radio or television reception, which can be determined by turning the equipment off and on, the user is encouraged to try to correct the interference by one or more of the following measures:

- Reorient or relocate the receiving antenna
- Increase the separation between the equipment and the receiver.
- Connect the equipment into an outlet on a circuit different from which the receiver is connected.
- Consult the dealer or an experienced radio technician for help.

Changeset model cations not expressly governed by the party responsible for compliance could void the user's authority to operate the equipment


This device complies with Part 15 of the FCC Rules. Operation is subject to the following two conditions: (1) this device may not cause harmful interference, and (2) this device must accept any interference received, including interference that may cause undesired operation.

WARRANTY CARD

Thank you for purchasing our company's products. If there are any quality issues with the product, please contact us. We can provide you with comprehensive after-sales service.

- Product model
- User Name
- Factory number
- Warranty address
- Purchase date:
- Warranty contact person

Documents / Resources

	<p>MCHOSE G75 Pro Mechanical Keyboard [pdf] User Manual G75PRO, 2BERM-G75PRO, 2BERMG75PRO, G75 Pro Mechanical Keyboard, G75 Pro, Mechanical Keyboard, Keyboard</p>
---	--

References

- [User Manual](#)

Manuals+, Privacy Policy

This website is an independent publication and is neither affiliated with nor endorsed by any of the trademark owners. The "Bluetooth®" word mark and logos are registered trademarks owned by Bluetooth SIG, Inc. The "Wi-Fi®" word mark and logos are registered trademarks owned by the Wi-Fi Alliance. Any use of these marks on this website does not imply any affiliation with or endorsement.