



**FM577 ML Bardon
Generation Digital
Locks**



McGrathLocks FM577 ML Bardon Generation Digital Locks User Guide

[Home](#) » [McGrathLocks](#) » McGrathLocks FM577 ML Bardon Generation Digital Locks User Guide 

Contents

- [1 McGrathLocks FM577 ML Bardon Generation Digital Locks](#)
- [2 Product Usage Instructions](#)
- [3 FAQ](#)
- [4 Features](#)
- [5 Download and Install the APP](#)
- [6 Create New Access](#)
- [7 Modify Pin Code](#)
- [8 Manage the Lock Voice](#)
- [9 Manage Tamper Alert](#)
- [10 Installation Instructions](#)
- [11 Documents / Resources](#)
 - [11.1 References](#)



McGrathLocks FM577 ML Bardon Generation Digital Locks



Product Usage Instructions

- Enable your smartphone to scan the QR code provided or search for TT Lock on the App Store or Google Play to download the APP.

FAQ

- **Q: Can I delete all access pin codes?**
 - **A:** Yes, you can delete all access pin codes by entering *71# followed by the admin code.
- **Q: How can I turn off the tamper alert?**
 - **A:** To turn off the tamper alert, enter *32# followed by the admin code and then input 0#.

Features



Fire Rated



Wi-Fi



APP



Pin Code



Key Override



RFID Card



Fingerprint

Download and Install the APP

- Enable your smartphone to scan QR code to download the APP.
- Also you can search“TT Lock” on APP store or Google play to download the APP.



Setting via lock

- If you don't want to use the App, you may follow the programming instructions below.

Create New Access



Add administrator (only 1):



- Enter *12#
- Input 123456# (the initial code)
- Input admin code# (6-9 digits)
- Repeat admin code#

Tips:

- When you do not use the App to program the lock, you can only use 6 to 9 digits.
- To add New APP Admin

If an admin code or admin APP already exists, input *83# + admin code#
Then another admin code can be set. The previous admin code will be deleted.

Add a new user with a pin code (Maximum 250)



- Enter *80#
- Input admin code#
- Input user code# (6-9 digits)
- Repeat user code#

Add a new user with an RFID card (Maximum 1000)



- Enter *80#
- Input admin code#
- Present the card

Tips:

If your smartphone supports NFC, copy the registered RFID card to your smartphone, the phone will be the key to unlock.

Add a new user with a fingerprint if the lock supports



- Enter *80#
- Input admin code#
- Present fingerprints several times according to the voice guide.

Modify Pin Code



Modify admin pin code:



- Enter *12#
- Input old admin code#
- Input new admin code#
- Repeat the new admin code#

Modify user pin code



- Enter *10#
- Input old user code#
- Input new user code#
- Repeat the new user code#



Delete User

Delete all access pin codes:

- Enter *71#
- Input admin code#



Delete the specified PIN code



- Enter *72#
- Input admin code#
- Input the specified code# that you want to delete

Tips:

The admin code can't be deleted.

Delete all RFID cards



- Enter *69#
- Input admin code#

Delete all fingerprints:



- Enter *70#
- Input admin code#

Manage the Lock Voice

Turn on the lock voice



- Enter *30#
- Input admin code#
- Input 1#

Turn off the lock voice



- Enter *30#
- Input admin code#
- Input 0#

Manage Tamper Alert

Turn on the tamper alert



- Enter *32#
- Input admin code#
- Input 1#

Turn off tamper alert:



- Enter *32#
- Input admin code#
- Input 0#

Reset the Lock

- Long press the Reset Button on the lock and when you hear “Please input initialization passcode” input 000#. If successful you will hear “Operation successful”.
- All pin codes, cards, fingerprints and BLE users will be deleted.
- Note the “Reset Button” can be disabled in the APP by the Administrator of the lock.

Demo Mode

- Demo mode is turned off by default prior to an Admin code being registered. If you wish to turn on demo mode input 24679#.

- Demo mode sets the lock access pin code to 123456# and any card or fingerprint will also open it. Registering an Administrator will take the lock out of demo mode.

Low Battery Alert

- When battery power is less than 4.8V you will hear a low battery alert each time you wake the lock screen. Please replace batteries with new Alkaline type.
- Don't mix old and new batteries.

Scrambling Code for Anti-Peep

- Users may enter any random digits before or/and at the end of entering their correct pin code and still gain access.
- This feature makes it harder for an unauthorized user who may be watching you to guess your pin code.

Incorrect Code/Card Alert

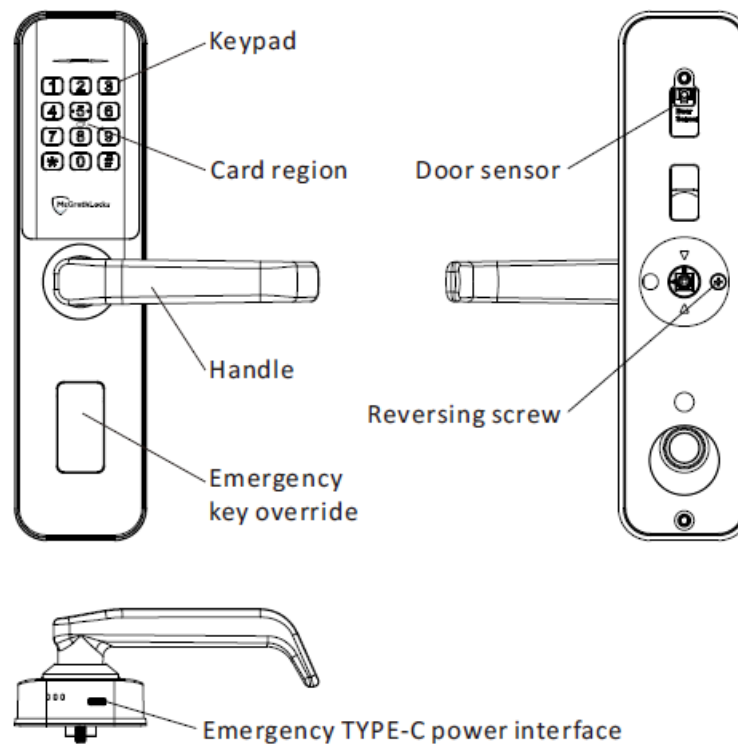
- If the wrong unlocking information is inputted five times the system will be locked for 35 seconds. The lock can still be operated by the APP during the lockout period.

Always Open Mode

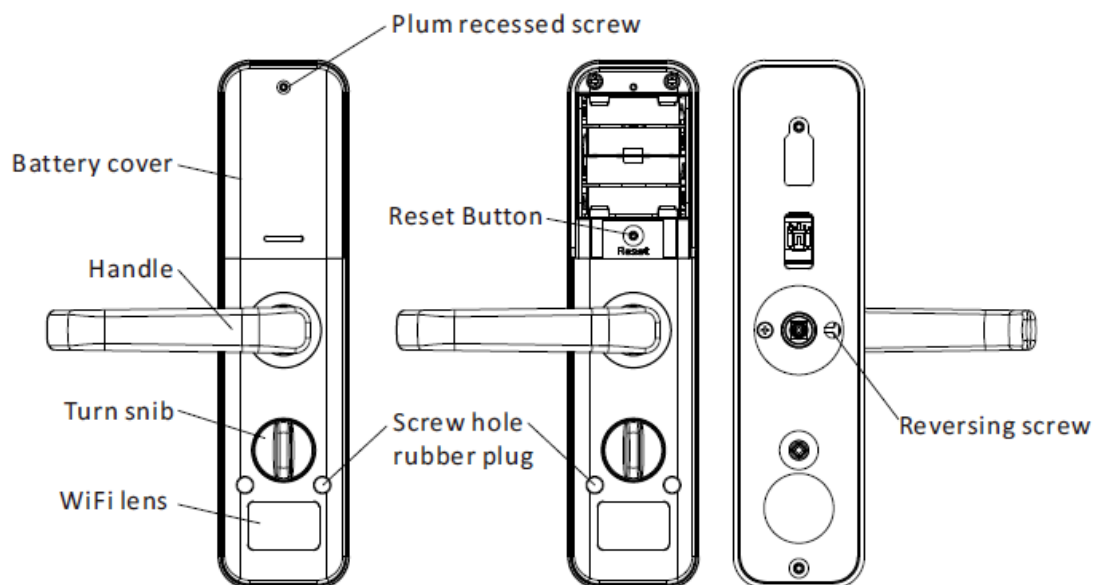
- Input 123# after a correct operation to enter always open mode. To exit always open mode and unlock the door via any of pin code, card, fingerprint or APP.

Installation Instructions

Exterior Assembly Diagram

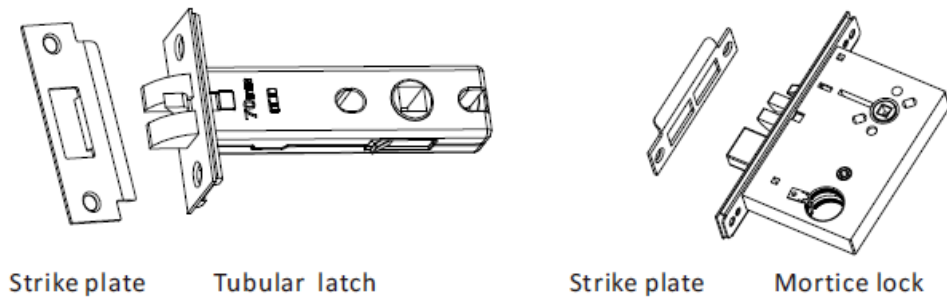


Interior Assembly Diagram



Install the lock mortice

- This lock supports two different types of lock mortice as follows.
- Check what you get in the box and install it on the door. Ensure that the mortice faceplate is flush with the door, according to the mortice position.

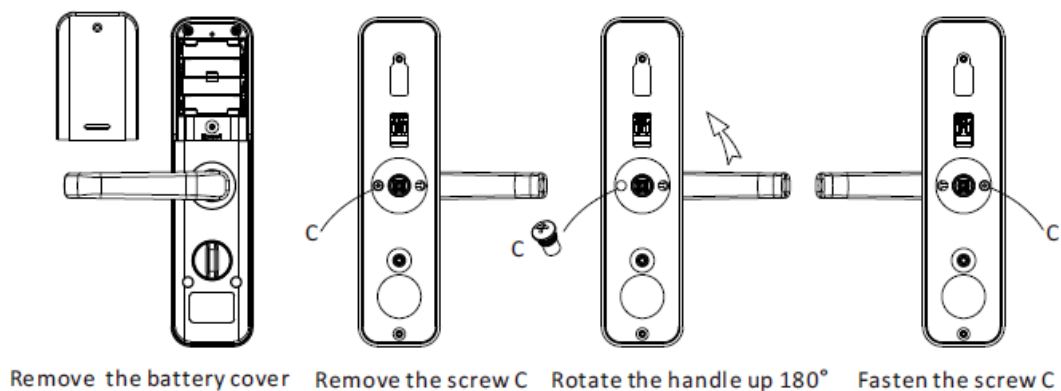


Reverse the direction of the lock handle (when needed)

- Please check if the handle matches your door. If it does not match, you need to reverse them for both exterior lock and interior lock.

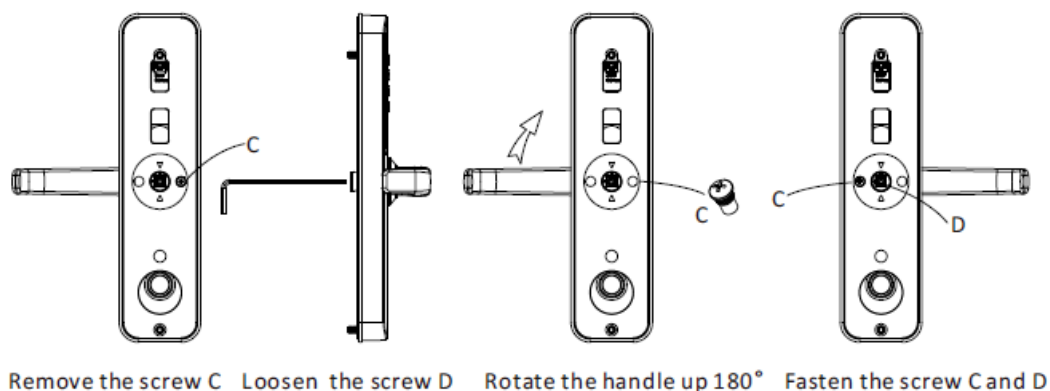
Reverse the direction of the interior lock handle

- Remove the battery cover, remove the screw C with a Phillips screwdriver. rotate the handle 180°, then fasten the screw C.

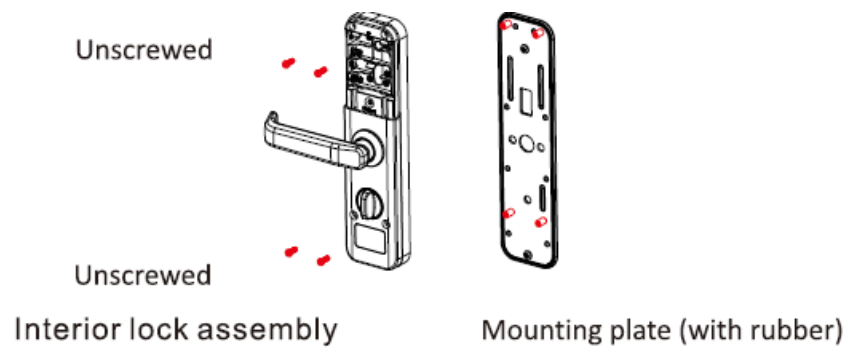


Reverse the direction of the Exterior lock handle

- First remove the screw C with a Phillips screwdriver, then loosen the screw D which on the inside of the handle with a hex wrench until can rotate the hand 180°, then fasten the screw C and the screw D.

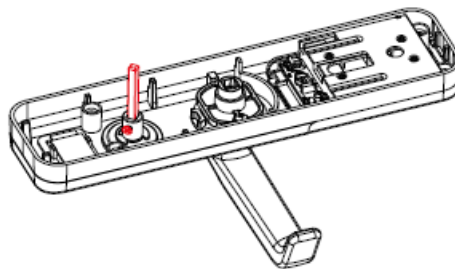


Dismantle the mounting plate from the interior lock assembly as below



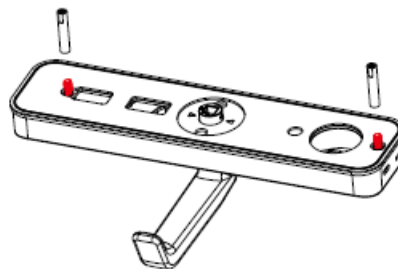
Install the turn snib spindle as below

- First install the spindle into the turn snib; then fasten the screw with a Phillips screwdriver.

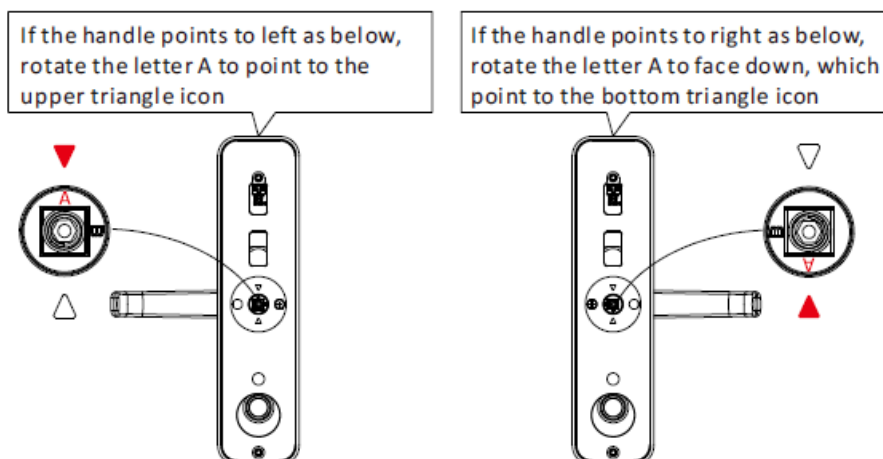


Tighten 2 screw studs on the exterior lock metal plate

- Exterior lock assembly

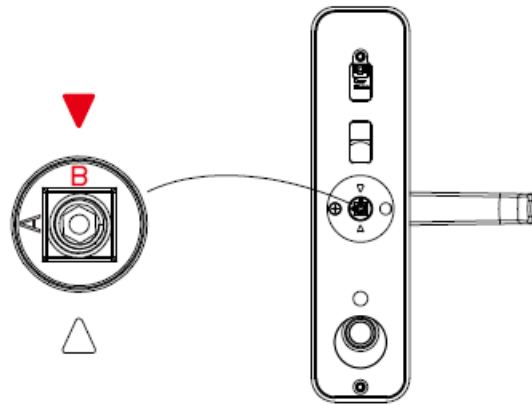


Tubular Latch Installation



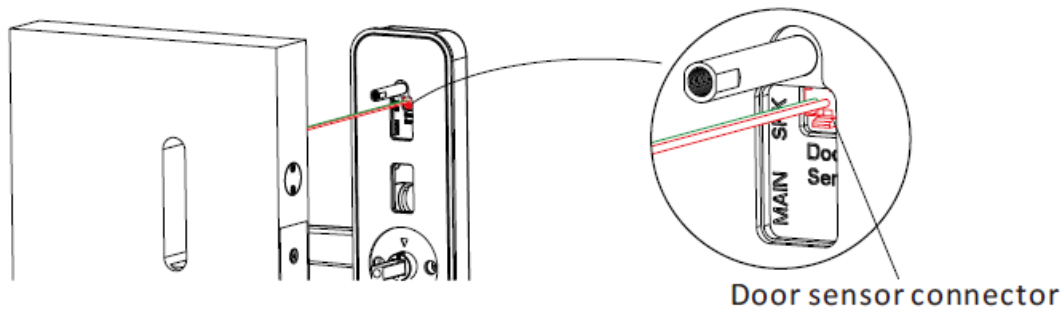
Mortice Lock Installation

- Rotate the letter B to point to the upper triangle icon.



Install door sensor

- **A.** Install the door sensor into the door and feed the cable through the hole.
- **B.** Connect the door sensor cable to the exterior lock assembly.



Choose the spindle

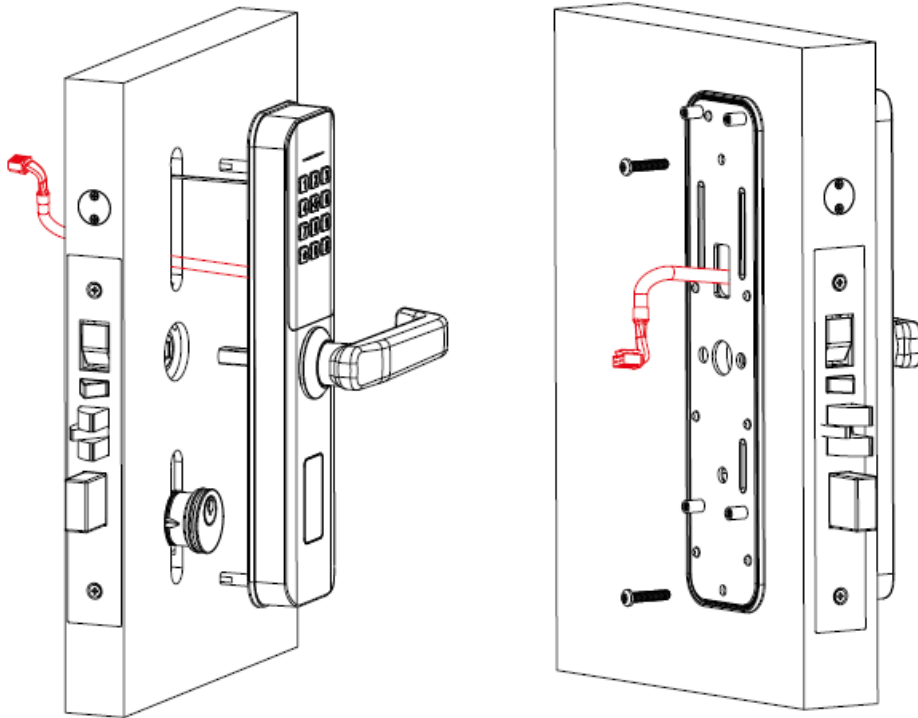
Euro mortice Tubular latch	Spindle size	Door thickness
	8*8*70	35-65
	8*8*100	66-95
	8*8*110	76-100
ANSI mortice	Spindle size	Door thickness
Exterior lock	8*8*24	35-50
	8*8*30	42-64
	8*8*40	62-84
	8*8*50	82-100
Interior lock	8*8*40	35-75
	8*8*55	65-100



Install exterior lock assembly

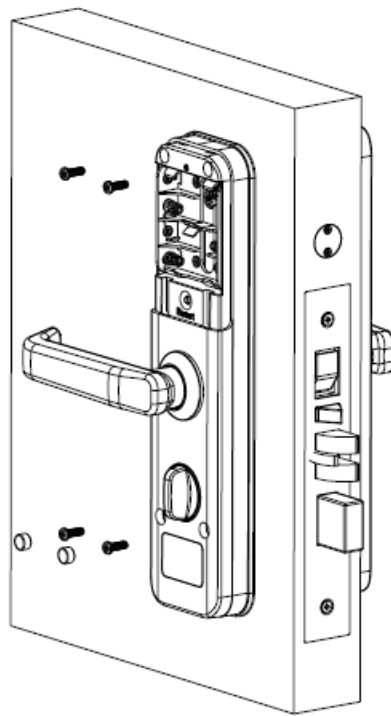
- **A.** Slide the exterior spindle through the hub of the latch or mortice lock.

- **B.** Feed the connecting cable through the top hole while placing the exterior lock assembly on the door. Ensure that the spindle sits within the lock hub.
- **C.** Position the inside mounting plate on the door and feed the connecting cable through the top hole.
- **D.** Use the two main fixing screws to attach the exterior lock assembly to the interior mounting plate but do not fully tighten.
- **E.** Align the mounting plate with the door edge ensuring the spindle is in the middle of the round hole in the mounting plate.
- **F.** Place the interior lock assembly on the door and check that both levers operate smoothly.
- **G.** Remove the interior lock assembly and tighten the two fixing screws.



Install interior lock assembly

- **A.** Slide the interior spindle through the hub of the latch or mortice lock.
- **B.** Connect the cable to the interior lock assembly.
- **C.** Place the interior lock assembly on the mounting plate ensuring not to pinch the connecting cable and tighten the 4 lock case screws.
- **D.** Test the handle and mechanical key override.
- **E.** Insert the rubber plugs into the bottom screw holes.
- **F.** If you have a power bank, please connect to the bottom USB port on the exterior lock.
- **G.** Insert 4 x AA Alkaline batteries.



Documents / Resources



[McGrathLocks FM577 ML Bardon Generation Digital Locks](#) [pdf] User Guide
FM577, 00, FM577 ML Bardon Generation Digital Locks, FM577, ML Bardon Generation Digital Locks, Generation Digital Locks, Digital Locks

References

- [User Manual](#)

[Manuals+](#), [Privacy Policy](#)

This website is an independent publication and is neither affiliated with nor endorsed by any of the trademark owners. The "Bluetooth®" word mark and logos are registered trademarks owned by Bluetooth SIG, Inc. The "Wi-Fi®" word mark and logos are registered trademarks owned by the Wi-Fi Alliance. Any use of these marks on this website does not imply any affiliation with or endorsement.