

MBJ Imaging A6 Rails Clamp with Mounting Instructions

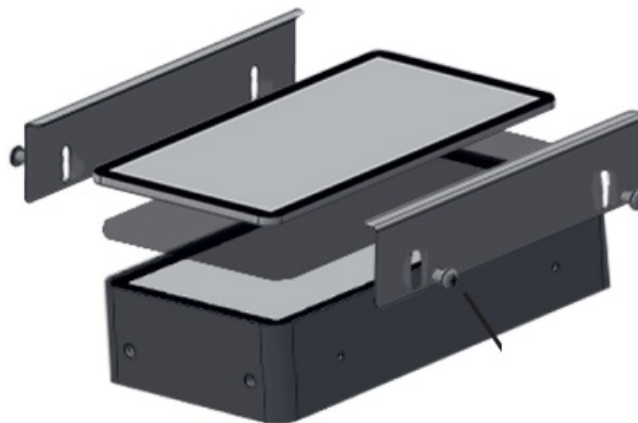
[Home](#) » [MBJ Imaging](#) » MBJ Imaging A6 Rails Clamp with Mounting Instructions 

Contents

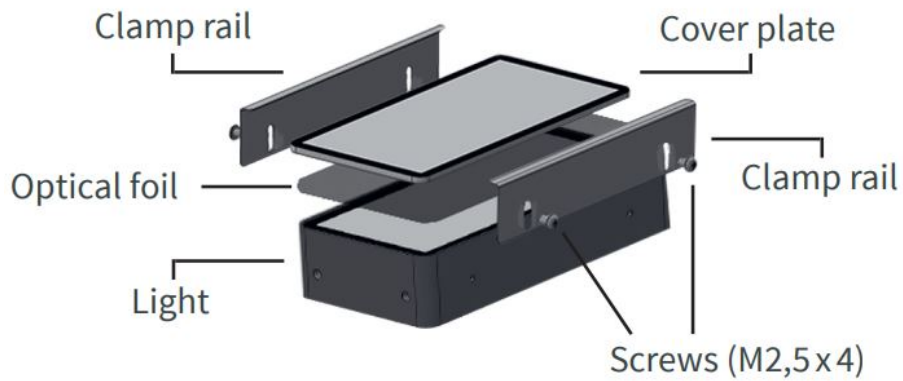
- [1 MBJ Imaging A6 Rails Clamp with Mounting](#)
- [2 Filter holder Mounting with clamp rails](#)
- [3 Documents / Resources](#)



MBJ Imaging A6 Rails Clamp with Mounting



Filter holder Mounting with clamp rails

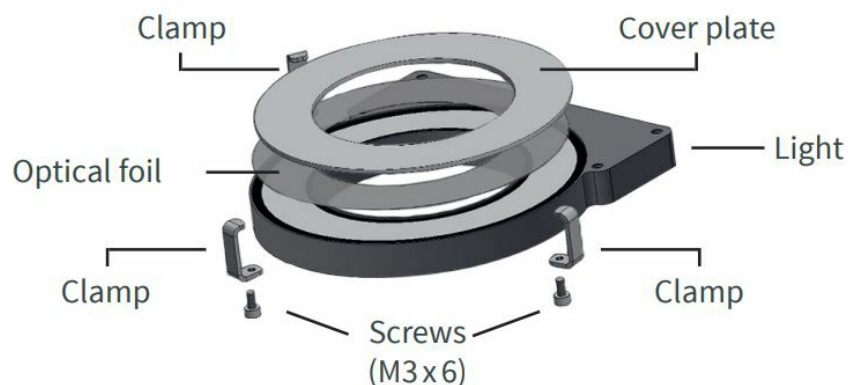


1. Protective Foils are marked with a sticker. Please handle foils and cover plates with care – avoid scratches and touching of the surface. We suggest to wear gloves.
2. Attach one clamp rail loosely with screws.
3. Insert optical foil. (If more than 1 foil is used please refer to the schematic overview to the right)
4. Insert cover plate.
5. Attach the second clamp rail.
6. Hand-tighten screws, lightly pressing down the clamp rails onto the cover plate.

Cover plate

- Polarizer
- Collimator
- Diffusor
- LED

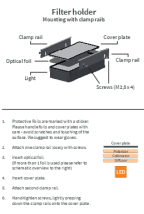
Mounting with clamps



1. Protective Foils are marked with a sticker.
2. Please handle foils and cover plates with care – avoid scratches and touching of the surface. We suggest to wear gloves.
3. Place filter on the luminous area of the lighting. (if more than 1 foil is used please refer to schematic overview to the right)
4. Place the cover plate on top.

- 5. Attach clamps with screws. The back of the lighting has small indentions indicating where the screws need to be placed.
- 6. Tighten screws, hand tight only.

Documents / Resources



Filter holder
Mounting with clamps

1. Prepare the filter holder with a screwdriver. Push the cover plate into the holder and push the optical filter into the holder. Push the cover plate into the holder.

2. Push the cover plate into the holder. Push the cover plate into the holder. Push the cover plate into the holder.

3. Push the cover plate into the holder. Push the cover plate into the holder. Push the cover plate into the holder.

4. Push the cover plate into the holder. Push the cover plate into the holder. Push the cover plate into the holder.

5. Push the cover plate into the holder. Push the cover plate into the holder. Push the cover plate into the holder.

6. Push the cover plate into the holder. Push the cover plate into the holder. Push the cover plate into the holder.

[MBJ Imaging A6 Rails Clamp with Mounting](#) [pdf] Instructions

A6 Rails Clamp with Mounting, A6, Rails Clamp with Mounting, Clamp with Mounting, Mounting