



## maze MWT-DIV Downpipe Diverter User Manual

[Home](#) » [MAZE](#) » maze MWT-DIV Downpipe Diverter User Manual 



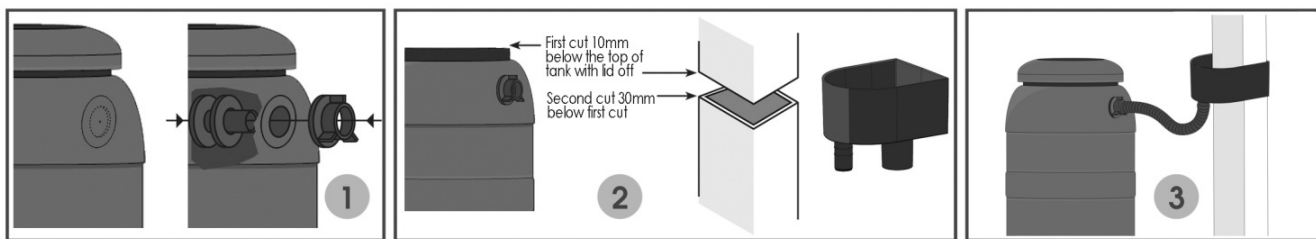
### Contents

- [1 Connecting the Downpipe Diverter](#)
- [2 Linking tanks together](#)
- [3 Documents / Resources](#)
- [4 Related Posts](#)

### Connecting the Downpipe Diverter

The Maze diverter is simple to install and allows you to collect rainwater from your downpipe without the water tank overflowing when full. The tank can either be positioned next to your downpipe or further away via an extended hose.

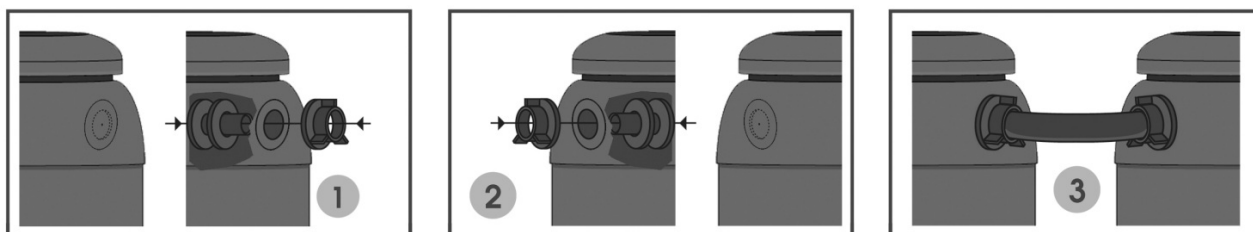
1. Drill a 25mm hole in the water tank. There are indented flat circles in the rim of the tank where it is ideal to make the hole.
2. Push the connection tank fitting through the hole and tighten the nut to hold it in place. (See pic 1)
3. Place the water tank next to the downpipe (if using the stand place tank on it). A 30mm section now needs to be removed from the downpipe. Mark 10mm below the top of the water tank. Mark again 30mm below this point. Using a hacksaw cut out this section. (See pic 2)
4. Fit diverter body with rectangular end upright into the cut section of the downpipe. You may need to remove your downpipe brackets in order to do this.
5. Connect the hose between the diverter and the water tank connector. (See pic 3)



## Linking tanks together

The Linking Kit allows you to connect many tanks together to achieve the desired storage capacity.

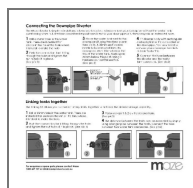
1. Drill a 25mm hole in the water tank. There are indented flat circles in the rim of the tank where it is ideal to make the hole.
2. Push the connection tank fitting through the hole and tighten the nut to hold it in place. (See pic 1)
3. Perform steps 1 & 2 on the second tank. (See pic 2)
4. The distance between the tanks can be extended by simply using a longer pipe between the tanks. Connect the hose between two water tank connectors. (See pic 3)



**maze**

For enquiries or spare parts please contact Maze:  
1300 449 107 or [info@mazeproducts.com.au](mailto:info@mazeproducts.com.au)

## Documents / Resources



[maze MWT-DIV Downpipe Diverter](#) [pdf] User Manual  
MWT-DIV Downpipe Diverter, MWT-DIV, Downpipe Diverter, Diverter