




maytronics Nautilus CC Robotic Pool Cleaner User Guide

[Home](#) » [maytronics](#) » maytronics Nautilus CC Robotic Pool Cleaner User Guide 

Contents

- [1 maytronics Nautilus CC Robotic Pool Cleaner](#)
- [2 Cautions & Warnings](#)
- [3 Helpful hints](#)
- [4 Dolphin Power Supply](#)
- [5 Robot operation](#)
- [6 Maintenance](#)
- [7 Documents / Resources](#)



maytronics Nautilus CC Robotic Pool Cleaner



Thank you for purchasing a Maytronics Robotic Pool Cleaner.

The Robotic Pool Cleaners by Maytronics deliver advanced cleaning technologies, long lasting performance and easy maintenance. You and your family will be free to enjoy swimming with full confidence that your pool is completely clean.

Cautions & Warnings

- Use the originally supplied power supply only.
- Do not use an extension cable in any case whatsoever.
- Ensure the electrical outlet is protected by a ground fault interrupter (GFI) or an earth leakage interrupter.
- Keep the power supply out of standing water.
- Do not enter the pool while the Pool Cleaner is working.
- Unplug the power supply before servicing.
- Do not use the cable to take the pool cleaner out of the water.
- Use the Pool Cleaner in the following water conditions only: Chlorine Max 4 pm; pH 7.0 – 7.8; Temperature 6 - 34°C (43-93°F); NaCl Maximum = 5000 ppm.

Digital Power Supply

Input: 100-125 AC Volts

50-60 Hertz

120 Watt

Output: <30 VDC

IP 54

Specifications:

- **Motor protection:** IP 68
- **Minimum depth:** 0.80m/2.6ft
- **Maximum depth:** 5m/16.4ft

Helpful hints

- When working, the Power Supply should be placed in the shade.
- If the Dolphin is fitted with combined or wonder brushes, gently squeeze the brushes until they are soaked with water.
- Release minimal required floating cable length to ensure proper pool coverage. Leave excess cable rolled outside the pool.
- After each cleaning cycle wash the filters or cartridge. Clogged filters reduce scanning and cleaning efficiency.
- To remove the kinks stretch the cable out completely and let it sit for at least a day in the sun.
- Store the pool cleaner in a shady place on its Caddy, if not on a caddy, place the pool cleaner upside down.

Dolphin Power Supply

BASIC OPERATION



1. Plug the Power supply into an electrical outlet.
2. Press the ON button.

The LEDs will turn on and the robot will start to operate.

If no program is selected, the robot will perform a single cleaning cycle.

The Power Supply will turn off automatically after 3 hours.

3. You can program the power supply at any time.

See the relevant section below for more details on each program.

*Bluetooth® is not available for this model

WEEKLY TIMER

Your robot has a Weekly Timer feature that enables you to set an automatic cleaning schedule for the week ahead.

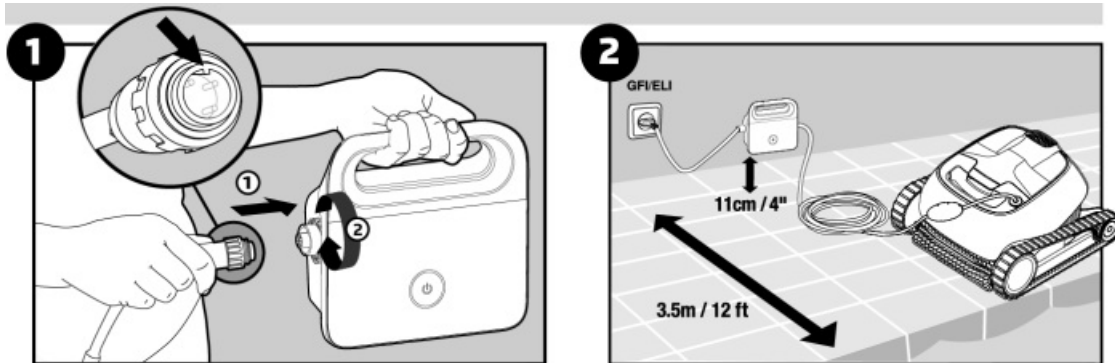
When the power supply is switched on, you can press the Weekly Timer button to select one of the following cleaning schedule options for the week ahead:



- **One click** – The robot will automatically work every day for a full cycle, that is, once a day for 7 days.
- **Two clicks** – The robot will automatically work every alternate day for a full cycle, that is, 4 times in a week.
- **Three clicks** – The robot will automatically work every 3 days, that is, 3 times in a week.

Robot operation

Set Up



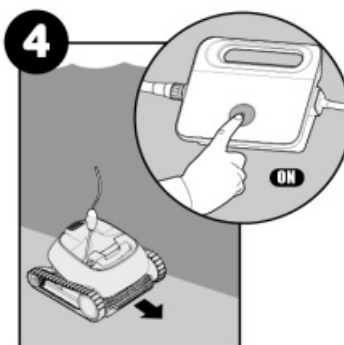
1. Attach the floating cable to the power supply.
2. Position the power supply at least 3.5m / 12ft away from the edge of the pool.

Into the pool

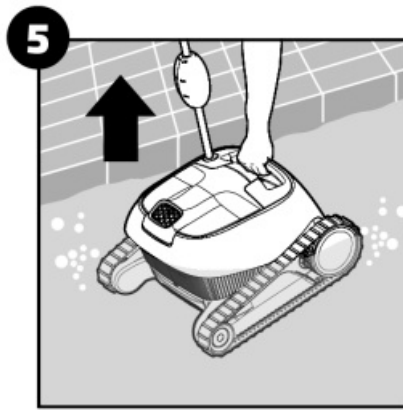


3. Put the Pool Cleaner into the pool. Release the Pool Cleaner and let it sink to the floor of the pool. Make sure that the floating cable is free of any obstructions.

Operation



4. Turn the power supply ON. the pool cleaner will now operate until it has reached the end of the cleaning cycle,
5. **Out of the pool**

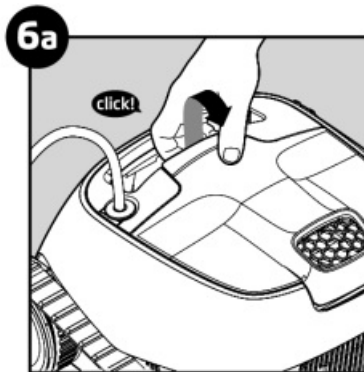


6. Cleaning the filter

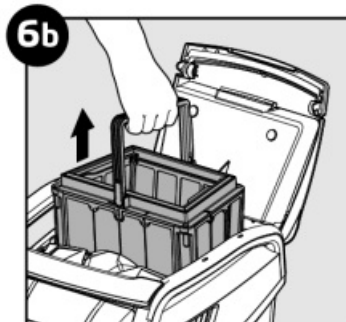
It is highly recommended to clean the filter basket after each cleaning cycle.

Note: Don't let the filter cartridges dry out before cleaning.

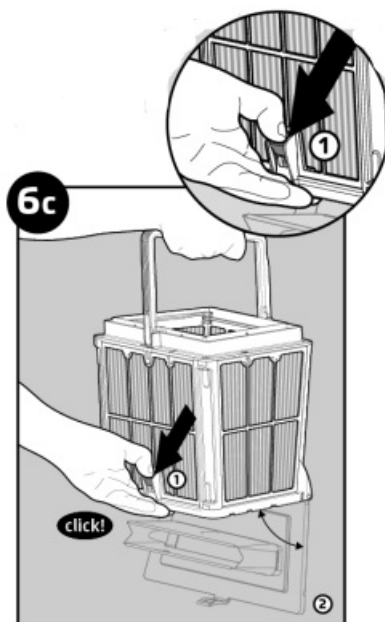
Unplug the power supply before servicing



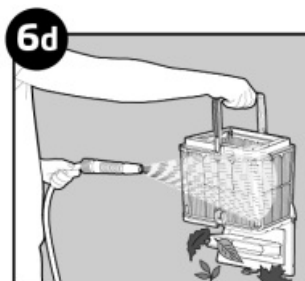
- Open the filter cover.



- Lift up the basket.



- Open the latch to release the bottom lid in order to remove the debris.



- Clean the filter basket with a hose.

7. Storage

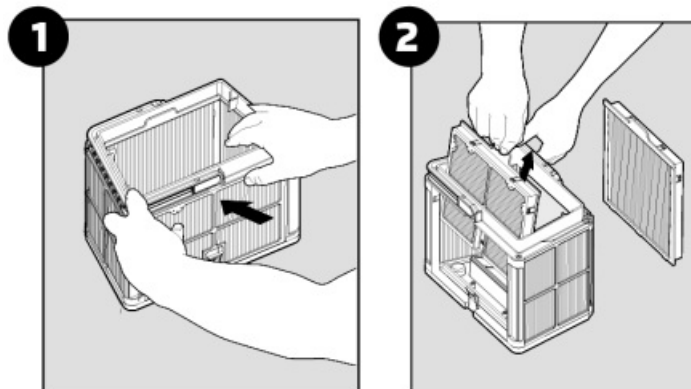
Coil the cable and store in a cool, dry place.

Do NOT store the robot and its accessories where it will be exposed to direct sunlight, excessive heat or to frost.

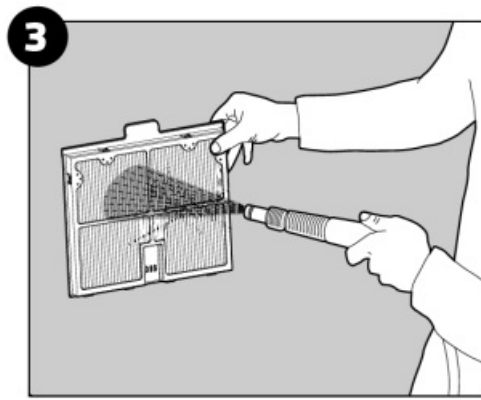
Maintenance

Periodic filter cleaning

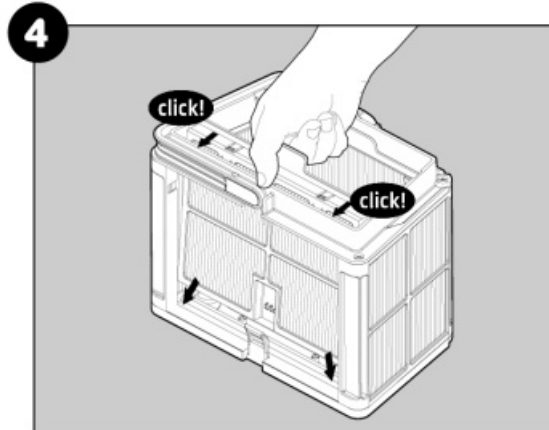
Dismantle the 2 ultra-fine filter panels of the outer basket according to the following steps:



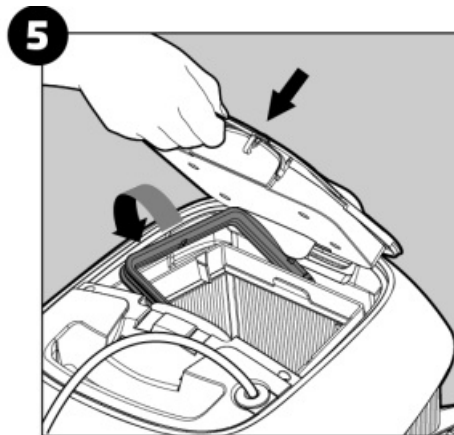
Dismantle the 2 panels using your thumbs.



Clean the filter panels with a hose.



Assemble the filter panels.



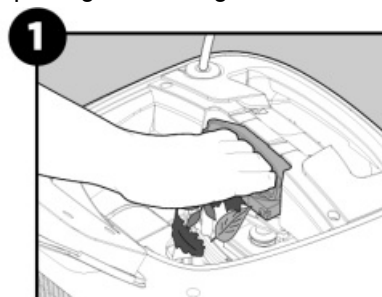
Insert the clean filter basket and close the filter cover.

Cleaning the impeller

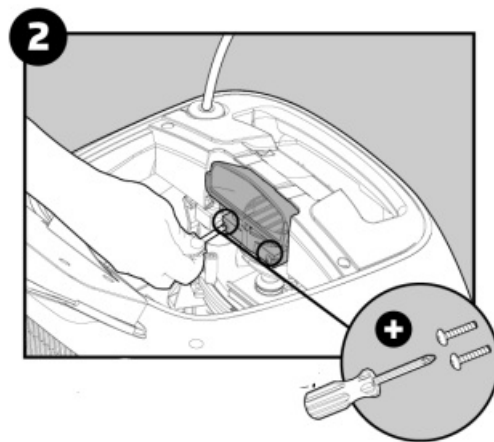
If you notice debris trapped in the impeller:

Unplug the power supply before servicing

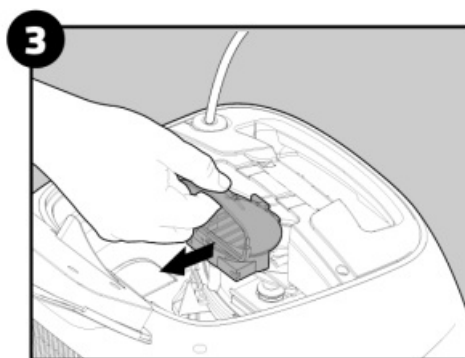
Clean the debris trapped in the impeller opening, according to the following steps



1. If the debris is not reachable follow the next steps.



2. Using a short screwdriver open the 2 screws.



3. Pull the impeller cover backwards to release it. Clean the debris trapped around the impeller. Assemble the impeller cover.

For a detailed manual (including videos): manuals.maytronics.com/en

For online product warranty registration: registration.maytronics.com

Documents / Resources



[maytronics Nautilus CC Robotic Pool Cleaner](#) [pdf] User Guide
99996113-US, Nautilus CC Robotic Pool Cleaner, Nautilus CC, Robotic Pool Cleaner, Pool Cleaner