



maytronics Nautilus CC Plus Robotic Pool Cleaner User Guide

[Home](#) » [maytronics](#) » maytronics Nautilus CC Plus Robotic Pool Cleaner User Guide

maytronics Nautilus CC Plus Robotic Pool Cleaner



Thank you for purchasing a Maytronics Dolphin Robotic Pool Cleaner.

The Robotic Pool Cleaners by Maytronics deliver advanced cleaning technologies, long lasting performance and easy maintenance. You and your family will be free to enjoy swimming with full confidence that your pool is completely clean.

Contents [[hide](#)

[1 Cautions & Warnings](#)

[2 Recommendation](#)

[3 Operating the robot using the MyDolphin™ Plus app](#)

[4 Robot operation](#)

[4.1 Set Up](#)

[4.2 Into the pool](#)

[4.3 Operation](#)

[4.4 Out of the pool](#)

[4.5 Cleaning the filter](#)

[4.6 Periodic maintenance](#)

[5 Storage](#)

[6 Documents / Resources](#)

[7 Related Posts](#)



Cautions & Warnings

- Use the originally supplied power supply only.
- Do not use an extension cable in any case whatsoever.
- Ensure the electrical outlet is protected by a ground fault interrupter (GFI) or an earth leakage interrupter.
- Ensure that the power supply is not in a wet environment
- Do not enter the pool while the pool cleaner is in the water.
- Unplug the power supply before servicing.
- Do not use the cable to take the pool cleaner out of the water. Use the Pool Cleaner in the following water conditions only: Chlorine Max 4 ppm; pH 7.0 – 7.8; Temperature 6 -35°C (43-95°F); NaCl Maximum = 5000 ppm.

Digital Power Supply

Input: 700-250 AC Volts 50-60 Hertz 2A

output: <30 vdc 6A 1sow IP 54

Specifications:

Motor protection: IP 68

Minimum depth: 0.4m/7.33ft

Maximum depth: 5m/76.4ft



Recommendation

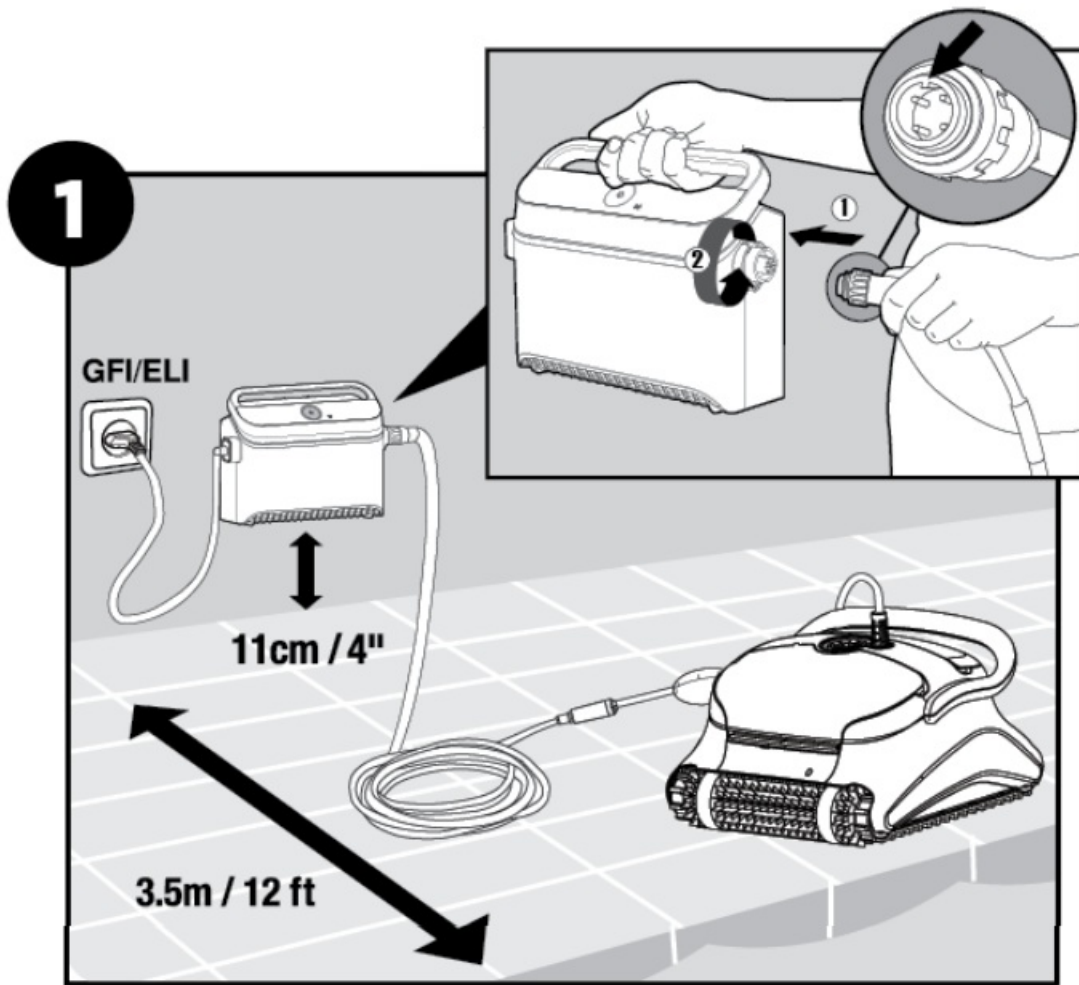
- The power supply should be placed in a well ventilated and shaded location.
- If the Dolphin is fitted with combined or wonder brushes, gently squeeze the brushes until they are soaked with water and only then start the cleaning process.
- Release minimal required floating cable length to ensure proper pool coverage. Leave excess cable rolled outside the pool.
- After each cleaning cycle wash the filters or cartridge. Clogged filters reduce scanning and cleaning efficiency.
- In case the cable has some kinks, stretch it out completely and let it sit for at least a day in the sun.
- Store the pool cleaner in a shady place on the caddy.

Operating the robot using the MyDolphin™ Plus app

- Plug in the power supply.
- Download the MyDolphin™ Plus app.
- Activate Bluetooth® and Wi-Fi® on your smart device.
- Start the registration process.
- Scan the QR code printed on the power supply, and complete the process.
- Follow the instructions as showed in the app.

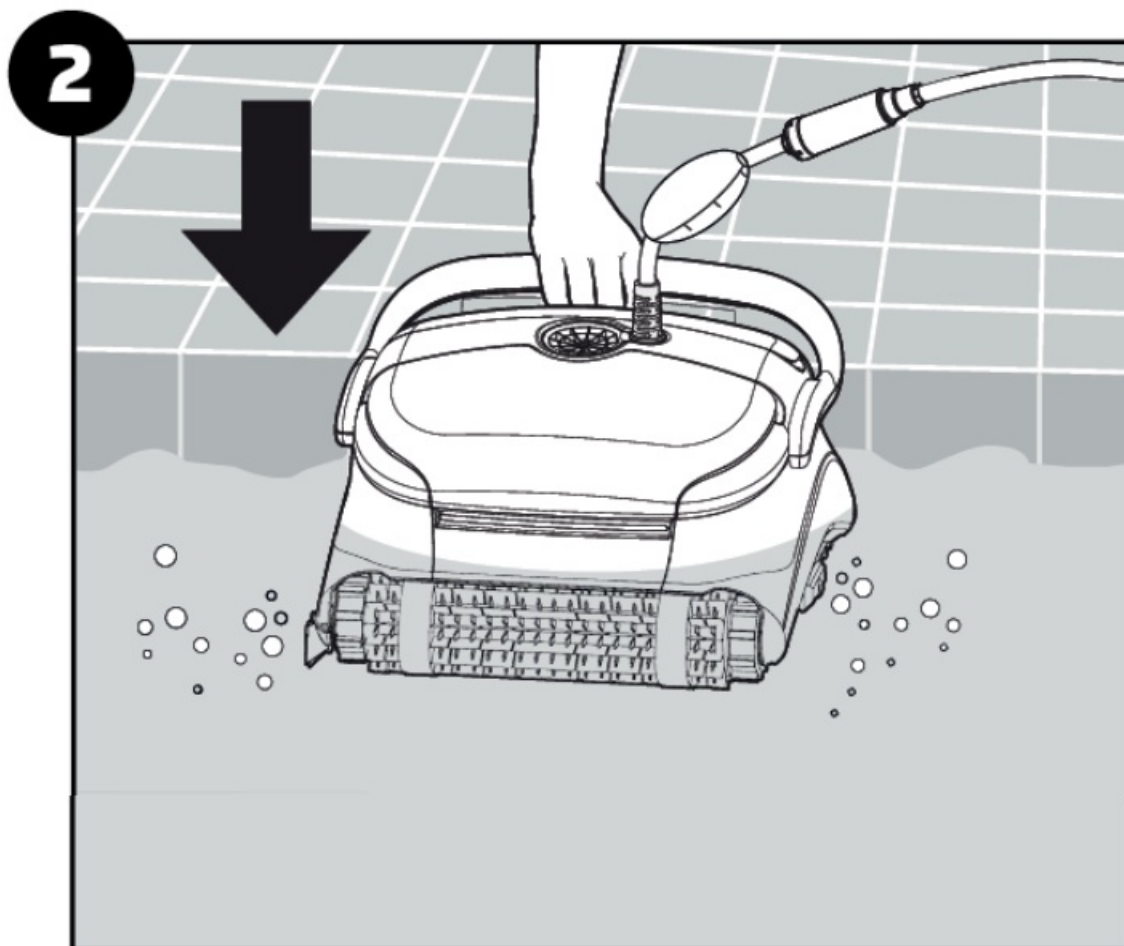
Robot operation

Set Up

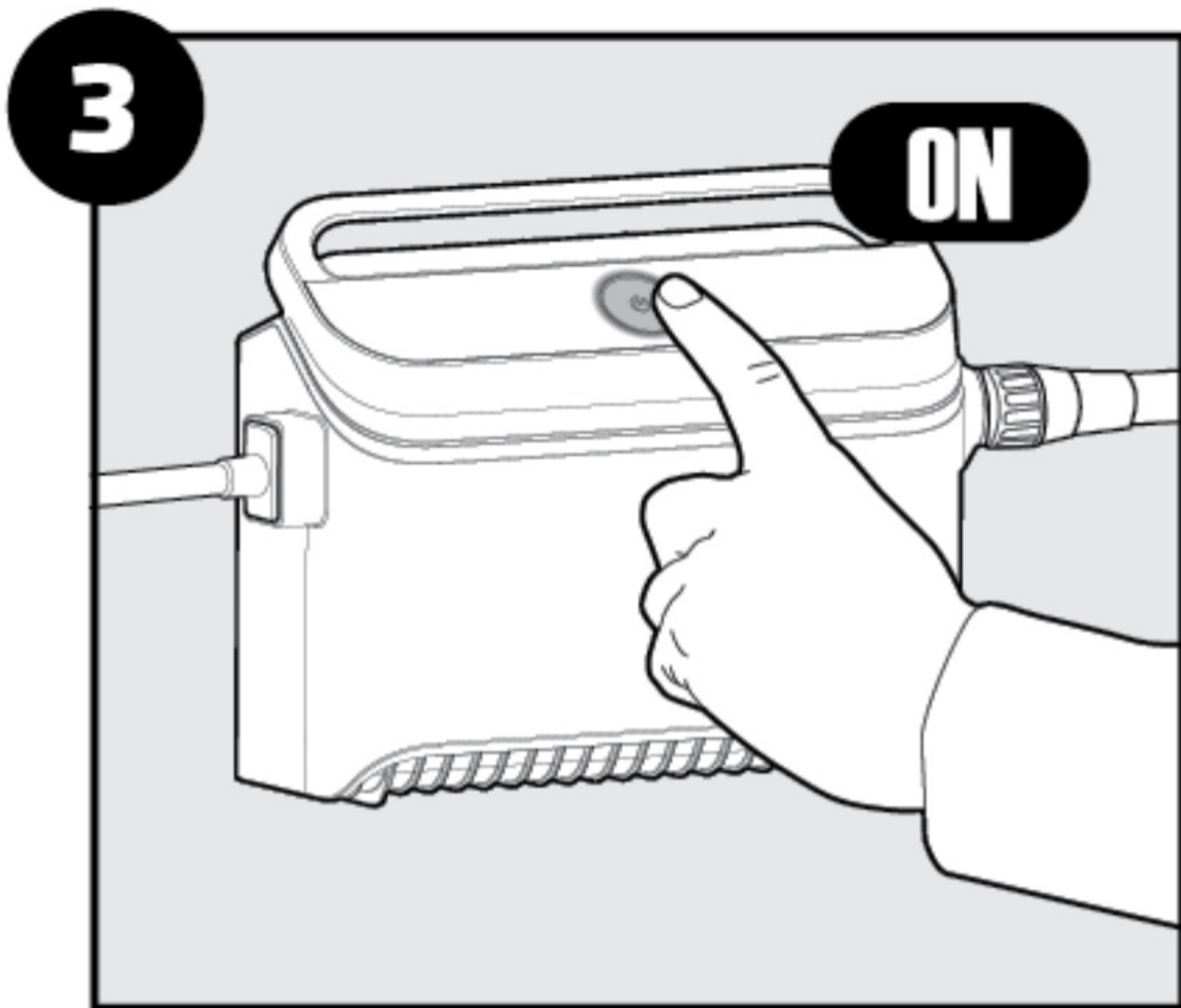


Position the power supply at least 3.5m / 12ft away from the edge of the pool.

Into the pool

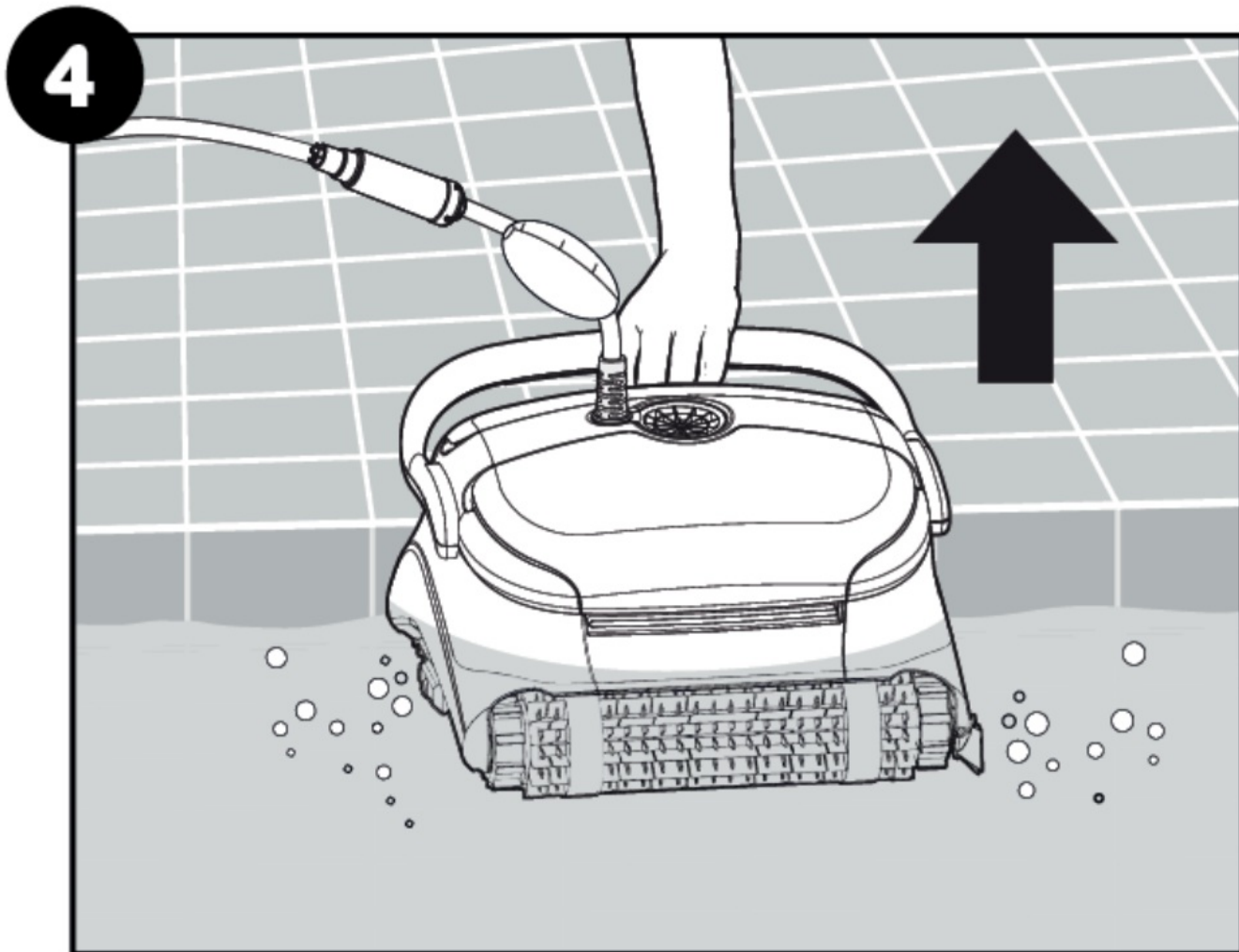


Operation



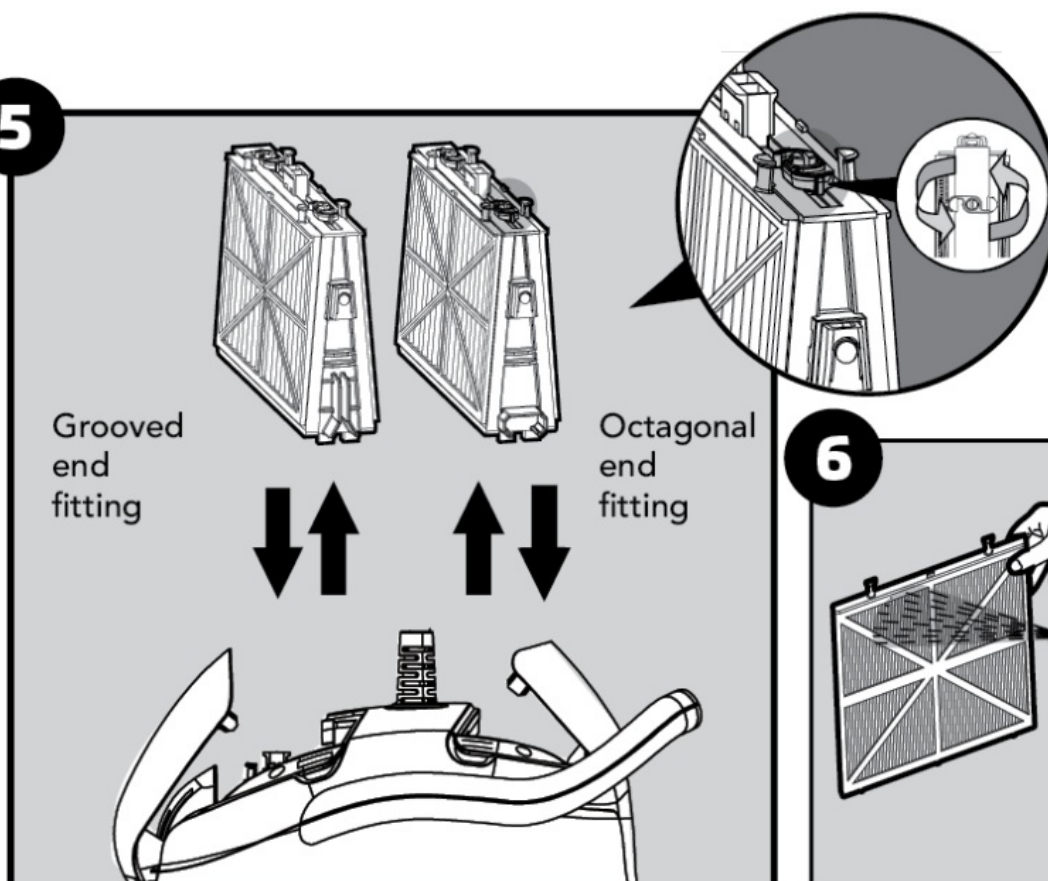
The robot will now begin working for a complete cleaning cycle. At the end of the cycle, it will automatically switch itself off.

Out of the pool

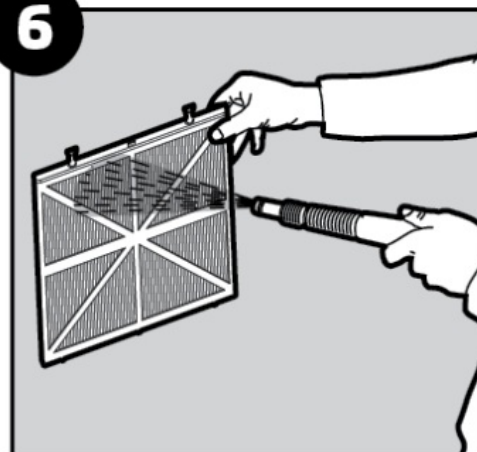


Cleaning the filter

5



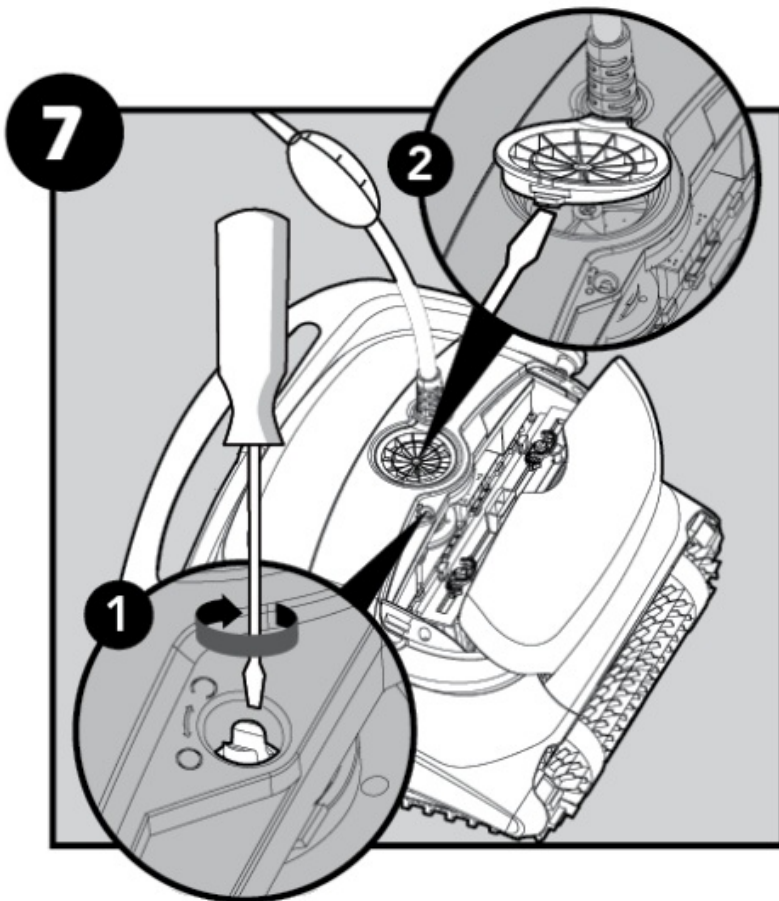
6



Periodic maintenance



Unplug the power supply before servicing.



Dismantle the impeller cover and clean around the impeller housing, then reassemble.

Storage

Coil the cable and store in a cool, dry place.

Do NOT store the robot and its accessories where it will be exposed to direct sunlight, excessive heat or to frost.

For on line product warranty registration:
registration.maytronics.com



For a detailed manual {including videos):
[manuals.maytronics.com/en/ 99996406-PCI](http://manuals.maytronics.com/en/99996406-PCI)





Documents / Resources



[maytronics Nautilus CC Plus Robotic Pool Cleaner](#) [pdf] User Guide
Nautilus CC Plus Robotic Pool Cleaner, Nautilus CC Plus, Robotic Pool Cleaner, Pool Cleaner, Cleaner