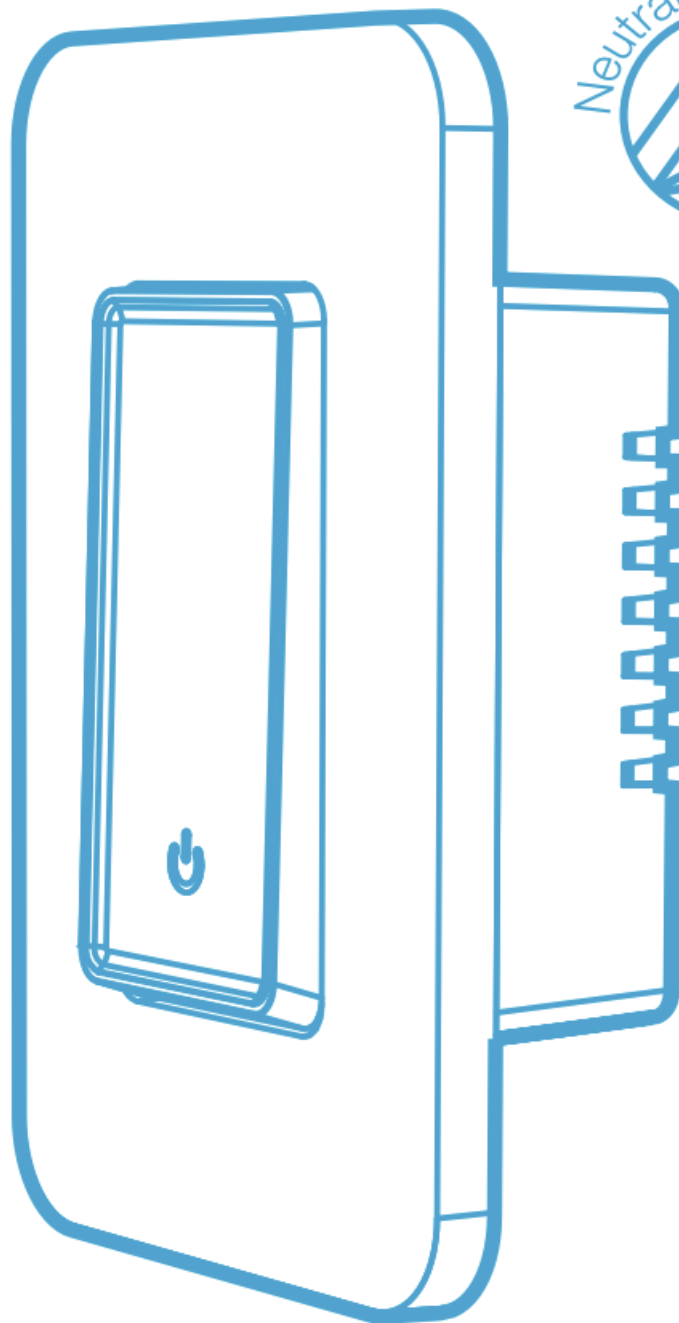


Maxxima MEW-S1013DW 3-Way-Single Pole WiFi Smart Light Switch Instruction Manual

[Home](#) » [Maxxima](#) » Maxxima MEW-S1013DW 3-Way-Single Pole WiFi Smart Light Switch Instruction Manual 

Maxxima MEW-S1013DW 3-Way-Single Pole WiFi Smart Light Switch






Contents

- 1 Single Pole / 3 Way
- 2 Recommended loads
- 3 FCC Information
 - 3.1 FCC CAUTION
- 4 Product Outline
- 5 Status Indicator
- 6 Using the On/Off Switch
- 7 Parts Supplied
- 8 Tools needed to install your Dimmer
- 9 Installation and testing
- 10 Tuya App
- 11 Troubleshooting
- 12 Documents / Resources
- 13 Related Posts

Single Pole / 3 Way

Input Power	100~ 120V AC 60Hz
Control	Relay
Communication Available for selected model	WiFi 802.11 b/g/n 2.4GHz
Max current	10A
Standby power	≤1W
Button Life	500K times
Dimension	105*45*42.5 mm

Recommended loads

 Incandescent/halogen —up to 1000W	 LED —up to 600W	 Motor —up to 0.6 HP
---	---	---



WARNINGS AND CAUTIONS

- Risk of fire and electrical shock, products should be installed in accordance with appropriate electrical codes and regulations.
- Turn power off at circuit breaker or fuse and test that power is off before installing.
- If you are unsure about any part of these instructions, consult a licensed electrician.
- To reduce the risk of overheating and possible damage to other equipment, do not install to control a receptacle, a motor-operated appliance or a transformer-supplied appliance.
- Use with compatible dimmable LED, Incandescent or halogen bulbs only.
- When multiple bulbs are used with one dimmer, DO NOT mix bulb types. All bulbs shall be either LED, halogen or incandescent. Using the same model of each bulb will enhance dimmer performance.

FCC Information

This device complies with Part 15 of the FCC Rules. Operation is subject to the following two conditions:

(1) This device may not cause harmful interference, and (2) This device must accept any interference received, including interference that may cause undesired operation.

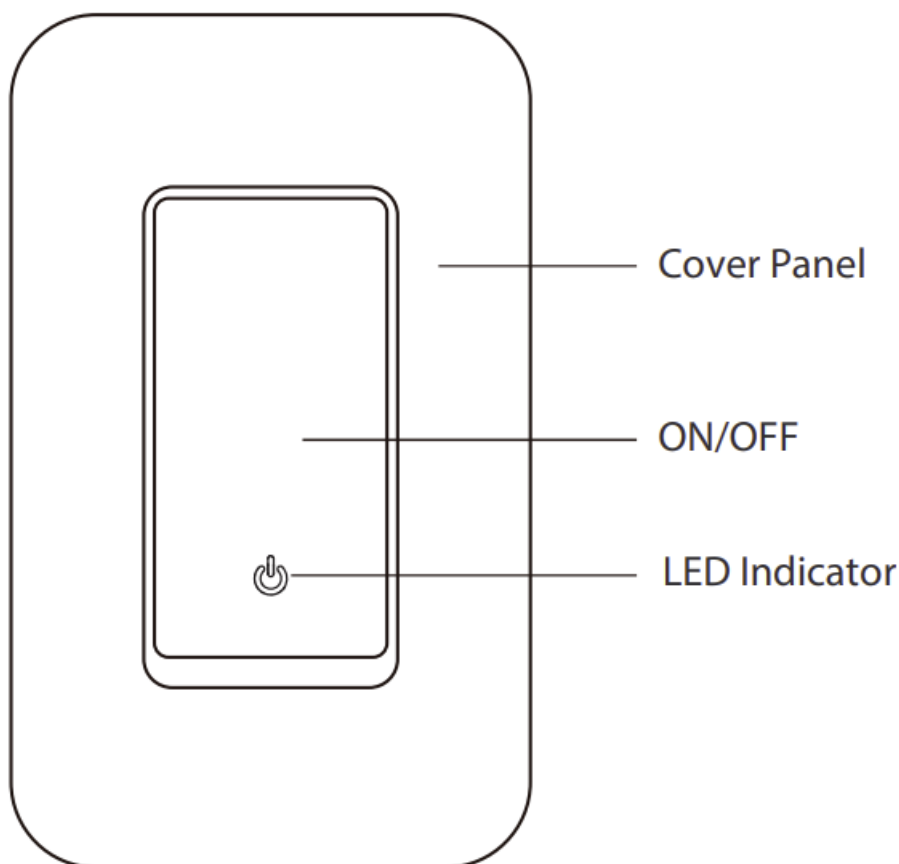
This equipment has been tested and found to comply with the limits for a Class B digital device, pursuant to part 15 of the FCC Rules. These limits are designed to provide reasonable protection against harmful interference in a residential installation. This equipment generates, uses and can radiate radio frequency energy and, if not installed and used in accordance with the instructions, may cause harmful interference to radio communications. However, there is no guarantee that interference will not occur in a particular installation. If this equipment does cause harmful interference to radio or television reception, which can be determined by turning the equipment off and on, the user is encouraged to try to correct the interference by one or more of the following measures:

- Reorient or relocate the receiving antenna.
- Increase the separation between the equipment and receiver.
- Connect the equipment into an outlet on a circuit different from that to which the receiver is connected.
- Consult the dealer or an experienced radio/TV technician for help.

FCC CAUTION

Any changes or modifications to this unit not expressly approved by the manufacture could void the user's authority to operate the equipment.

Product Outline

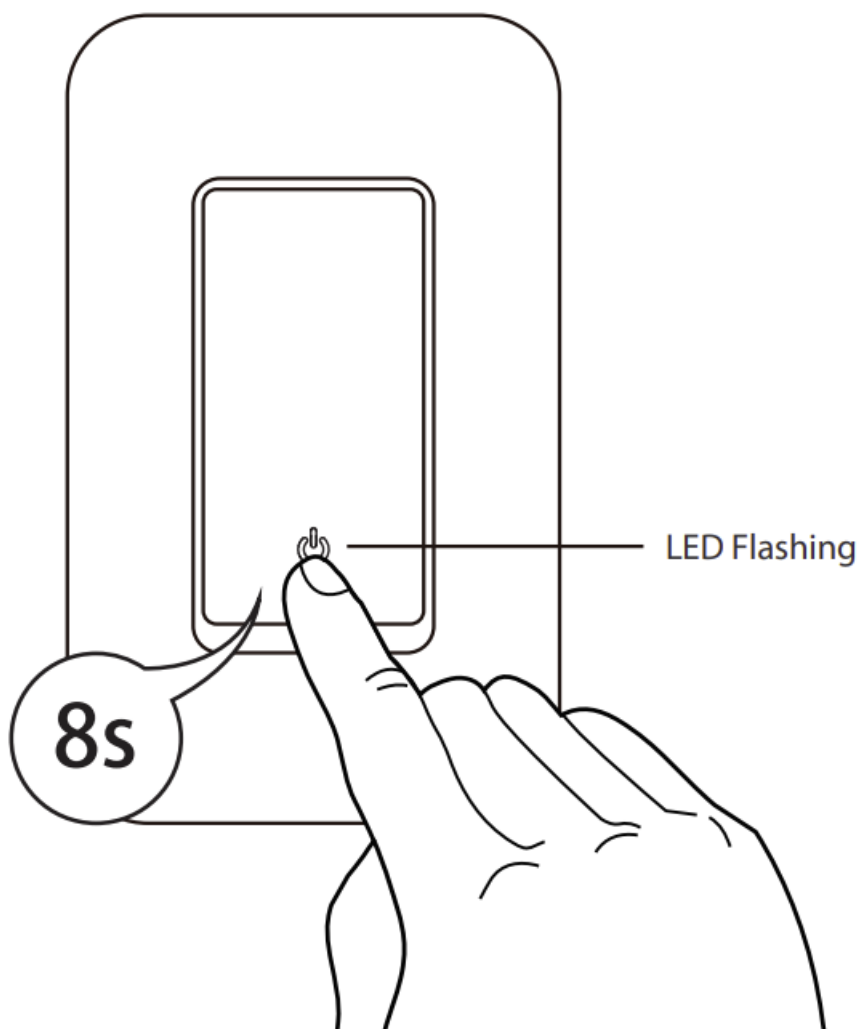


Status Indicator

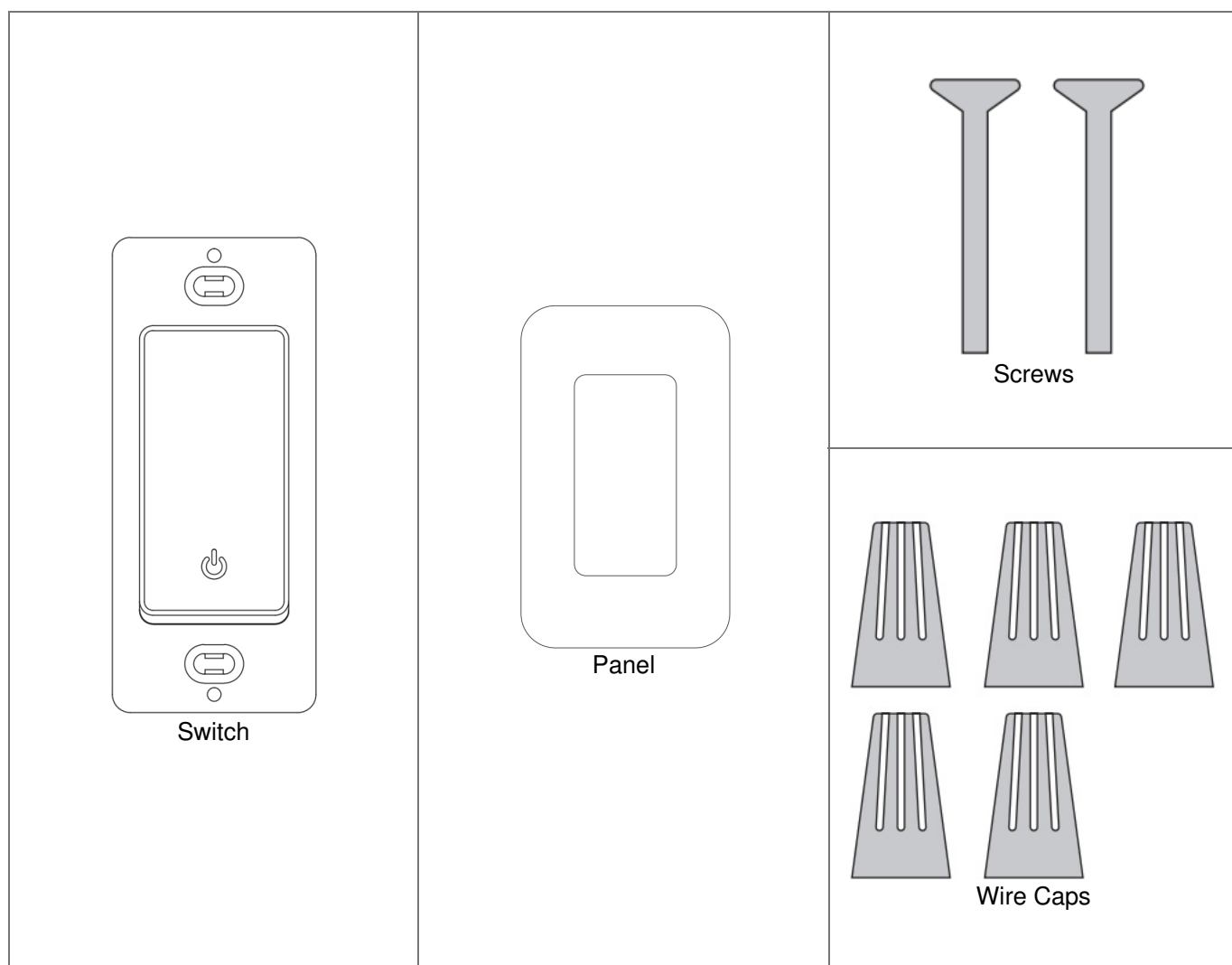
Light Color	Light Status	Switch Status	Remark
Green	ON	Power ON(Default)	Support Self-definition on APP
	OFF	Power OFF	
	Blink Quickly (0.5s)	Ready for default configuration mode	
	Blink Slowly (1s)	Ready for AP (Access Point) configuration mode	

Using the On/Off Switch

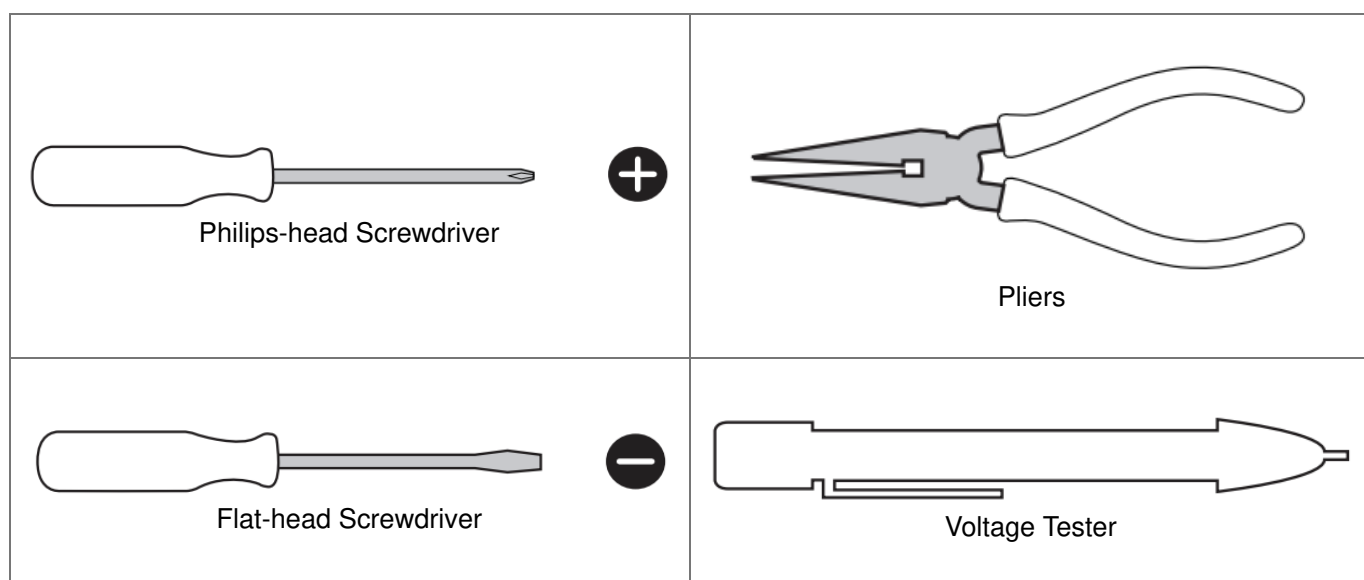
- To turn on the light: Press the On/Off switch once when the lights are off
- To turn off the light: Press the On/Off switch once when the lights are on
- Factory Reset: Hold the switch for 8s until the indicator light is flashing to reset the switch and go into quick configure mode.



Parts Supplied



Tools needed to install your Dimmer



Installation and testing

Step 1



WARNING: To avoid fire and electrical shock, TURN OFF POWER at circuit breaker or fuse and test that

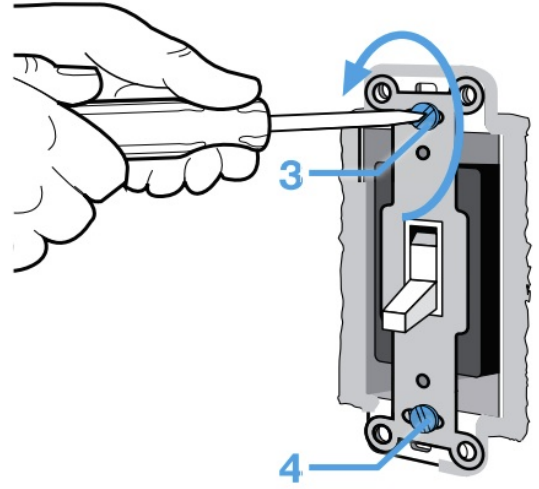
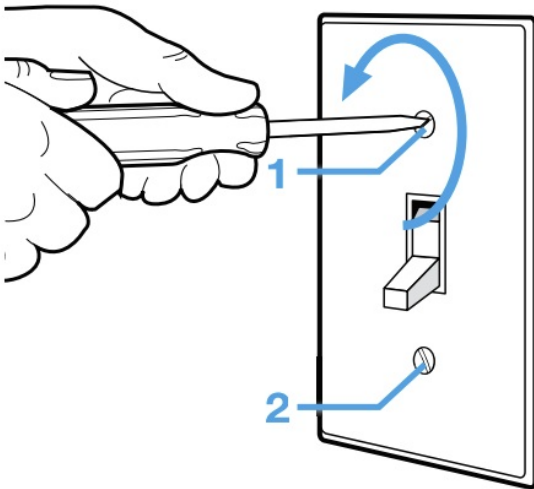
power is off before wiring.



Circuit breaker panel

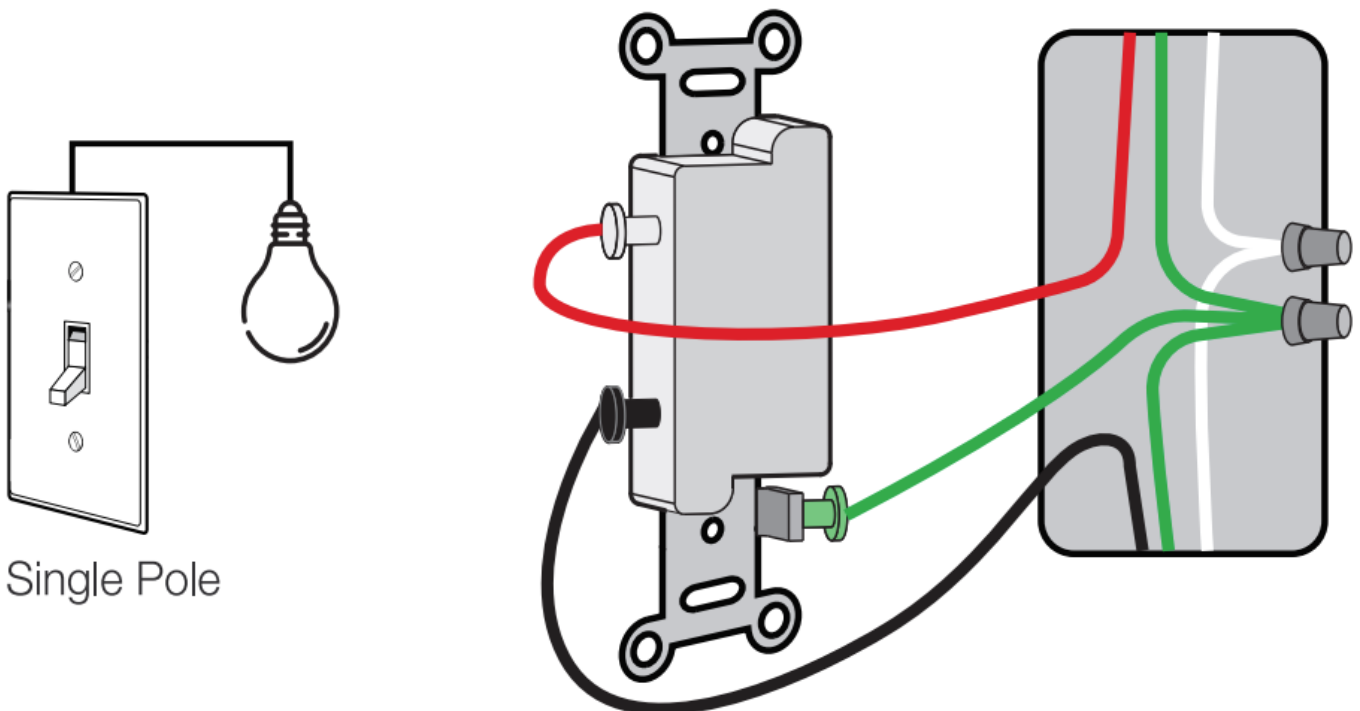
Step 2

Removing existing switch: Remove existing wall plate and switch mounting screws. Carefully pull switch from wall box, identify and take out the wires attached to the switch, then remove the switch. DO NOT remove the wires which are taken out from the switch at this time.



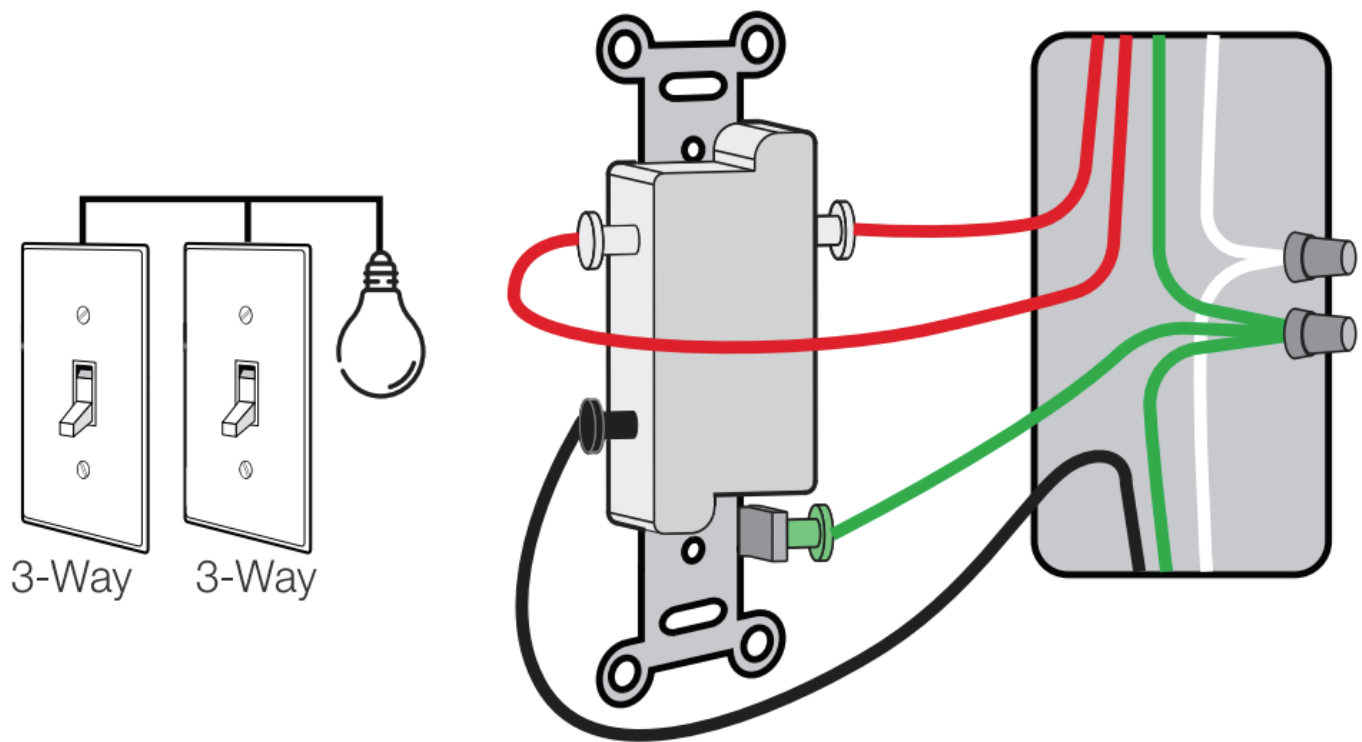
Step 3

Single Pole Only one switch controls one light or bundle of lights



Single Pole

3-Way Two switches control the same light or the same bundle of lights.

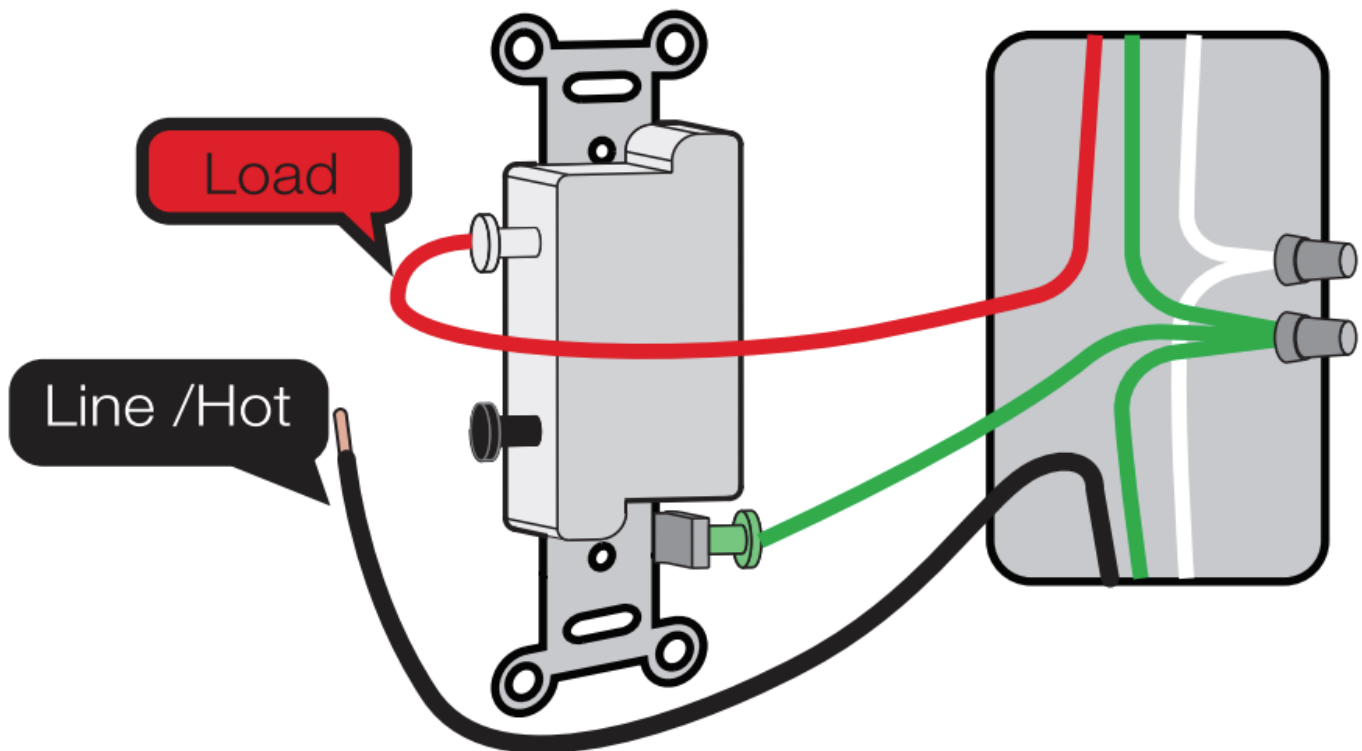


Step 4 Identify Line, Load, and Neutral Wires

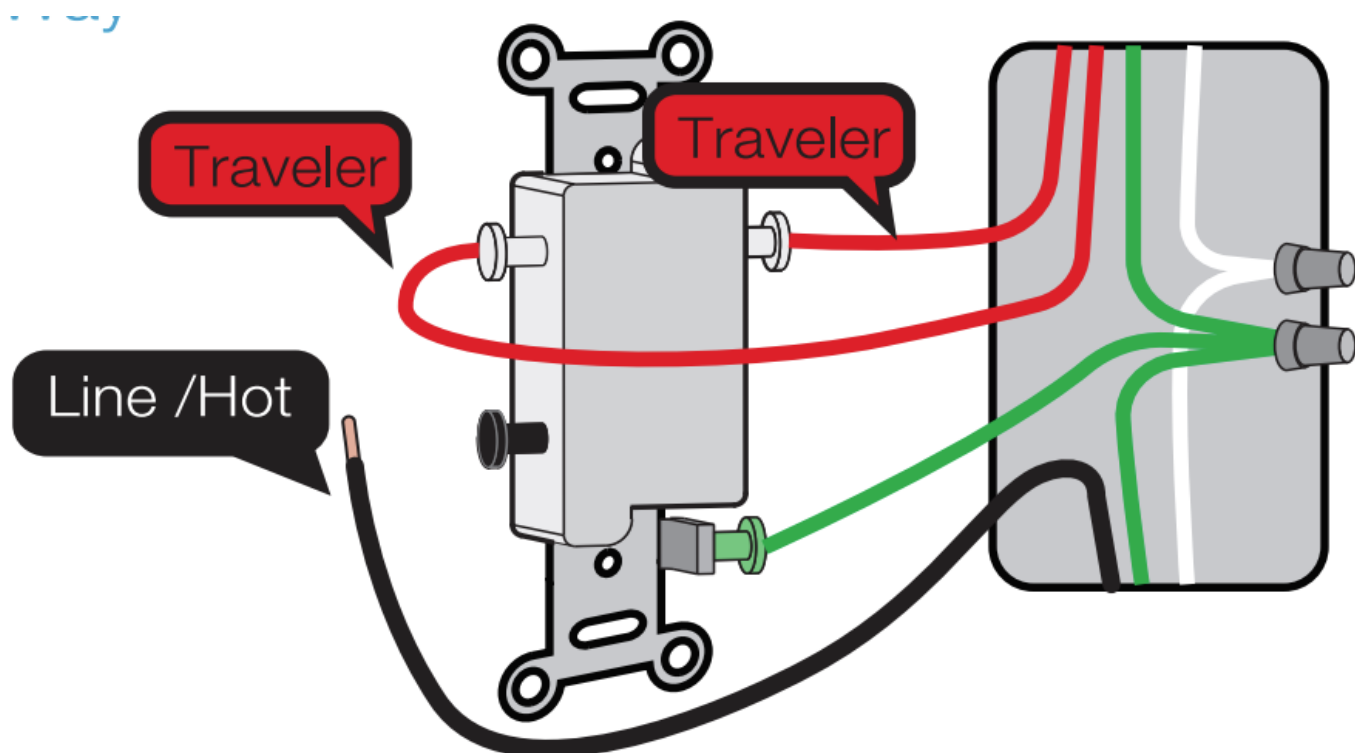
Note: The color of your wire may be different from the color shown on the manual.

LINE/LOAD wire (usually BLACK, attached with a black screw, and may be Remarked "common".)

Single Pole

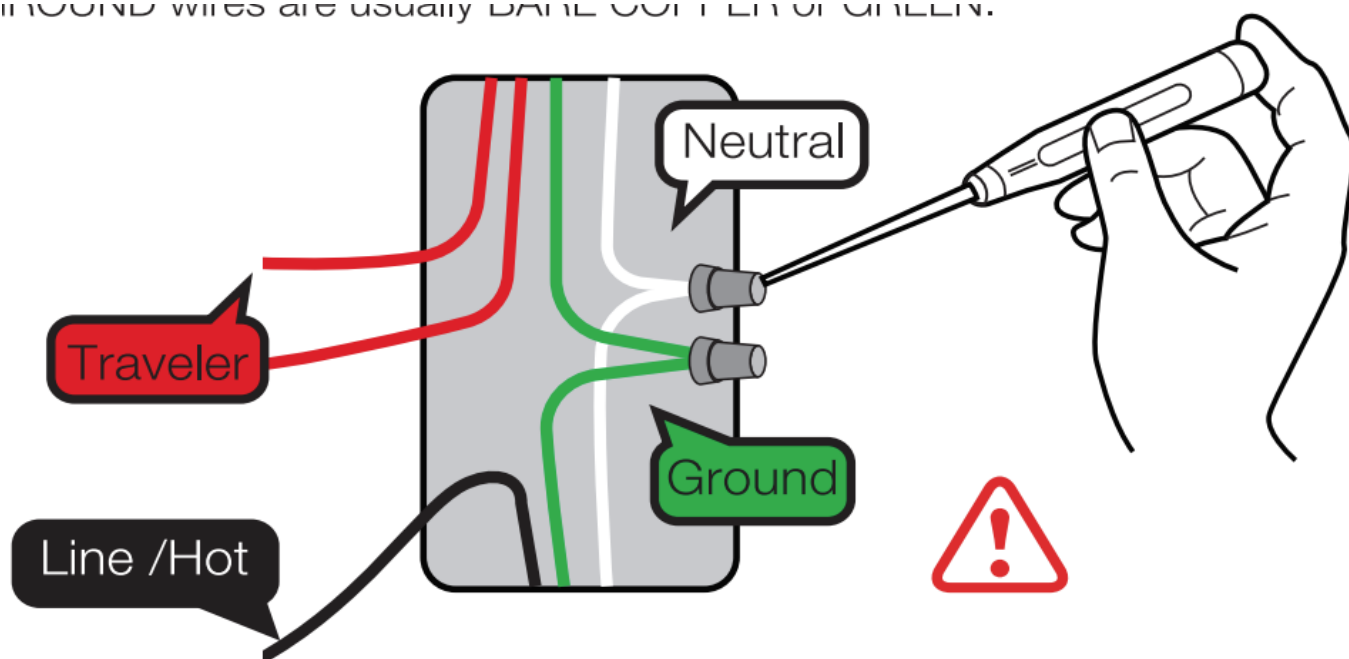


3-Way



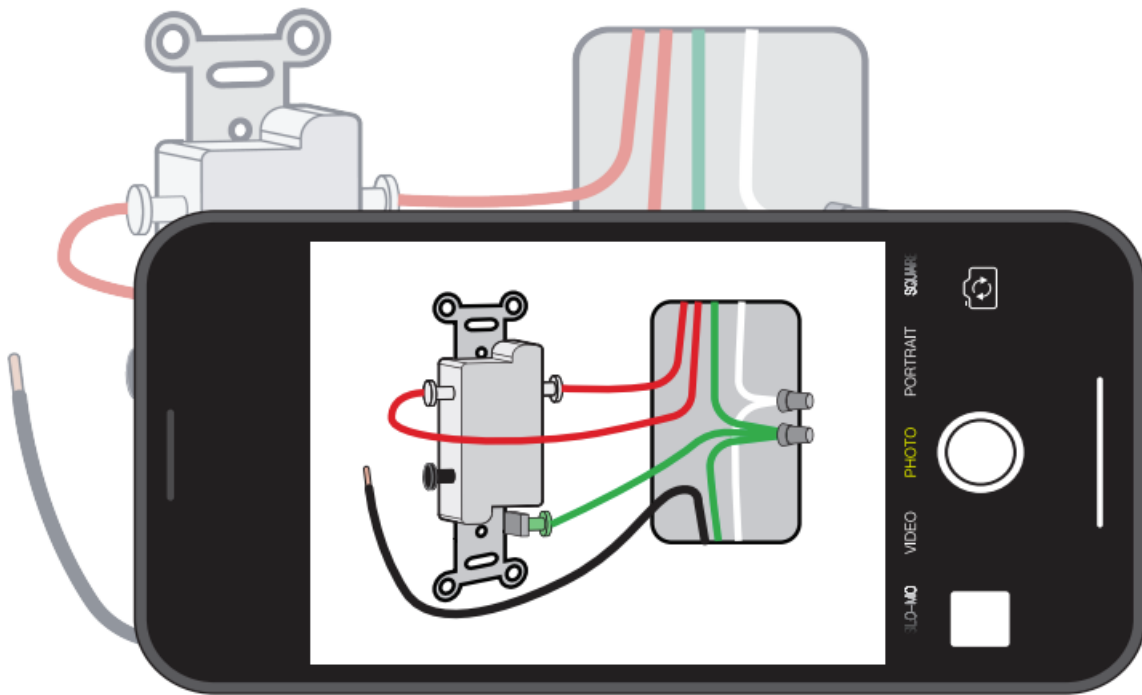
Neutral wire is required to install the smart dimmer .Most likely a bundle of one or more white wires in the wall.

GROUND wire are usually BARE COPPER or GREEN
 IN GROUND WIRES ARE USUALLY BARE COPPER OR GREEN.

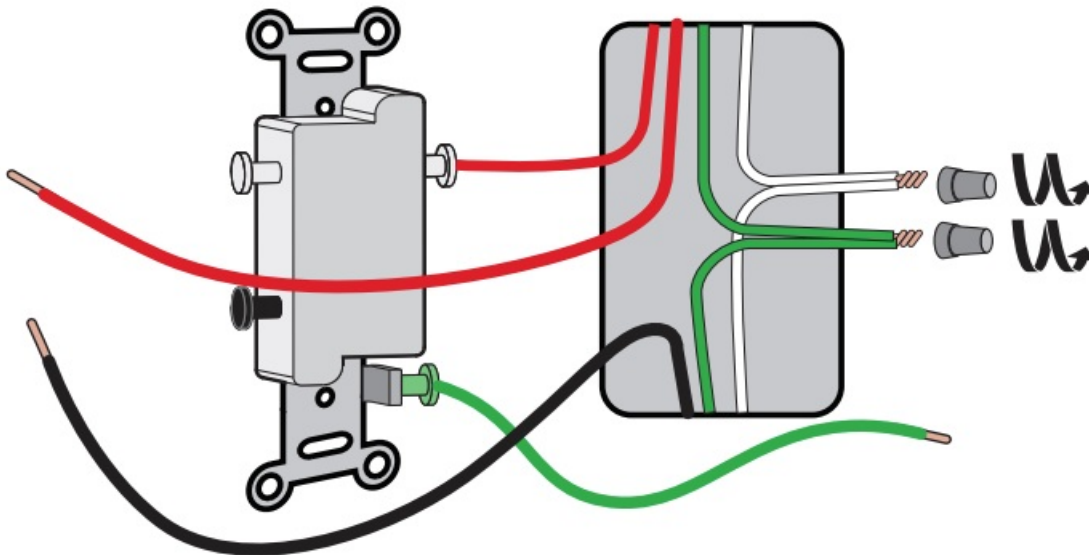


Note: If there is no neutral, please try another location or call an electrician for help.

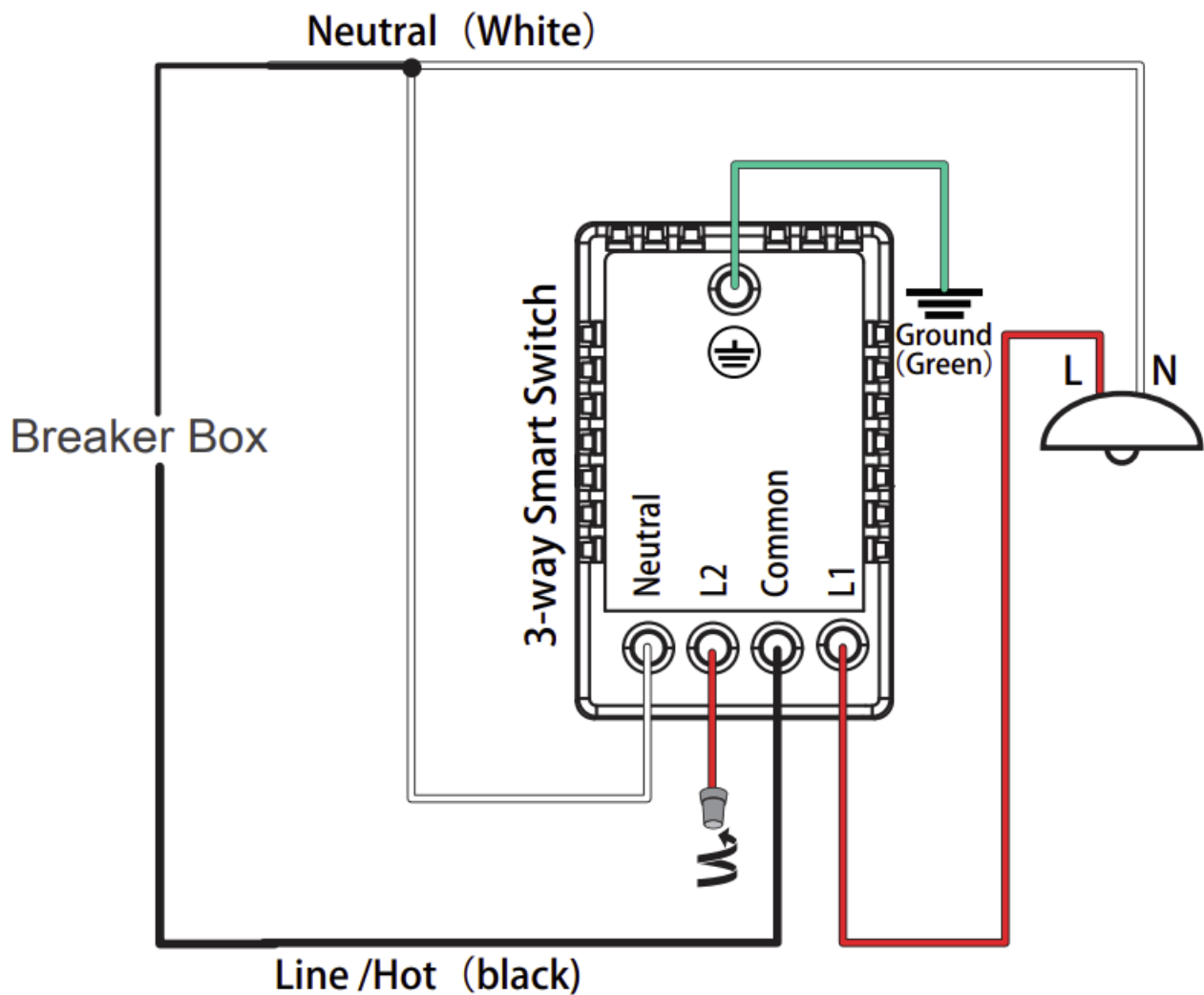
Take Pictures of the Wiring



Loosen the screw terminals and remove the old dimmer.

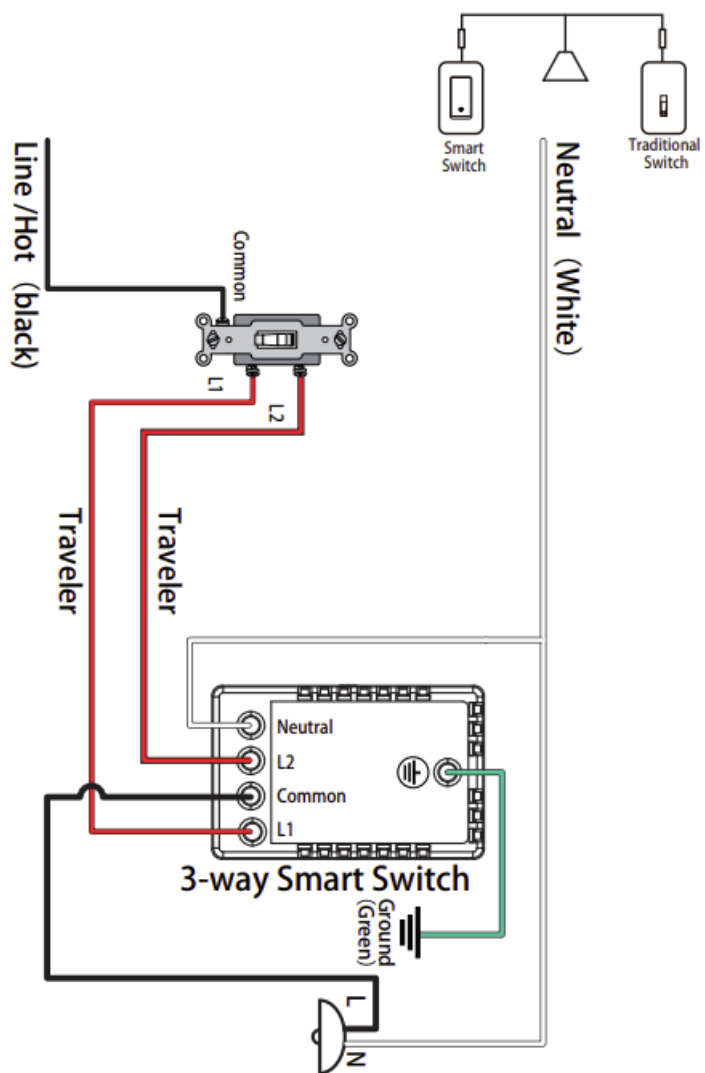


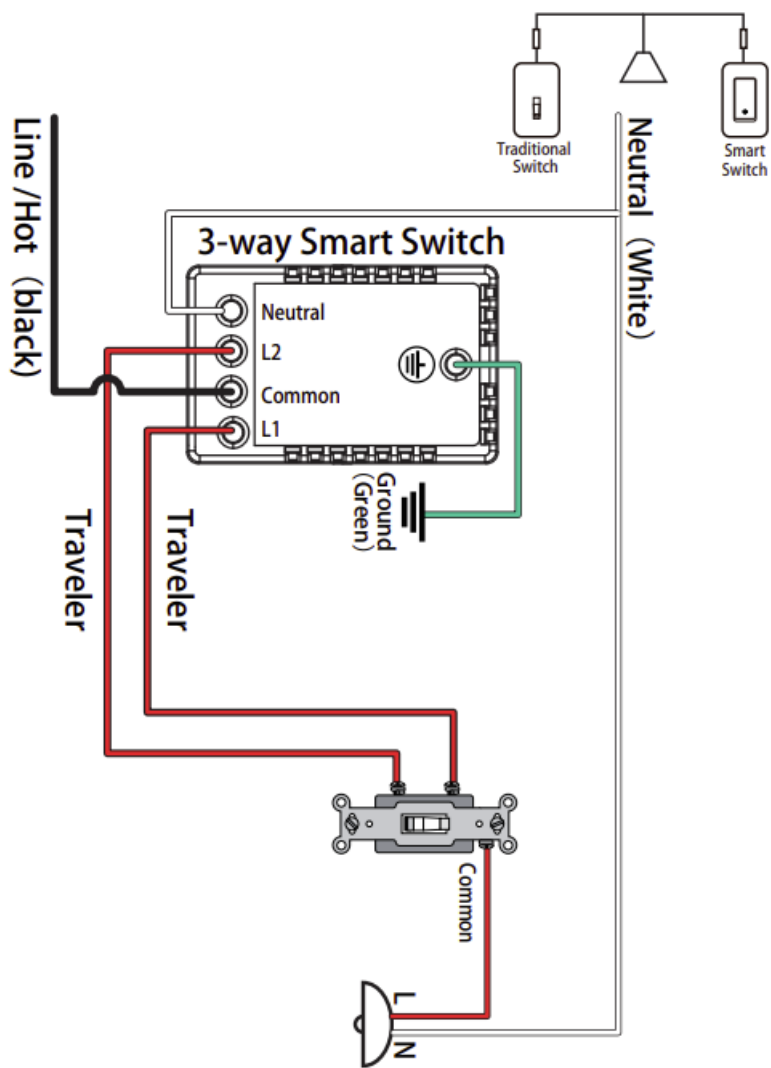
Step 5a Wire the Smart Switch – Single Pole



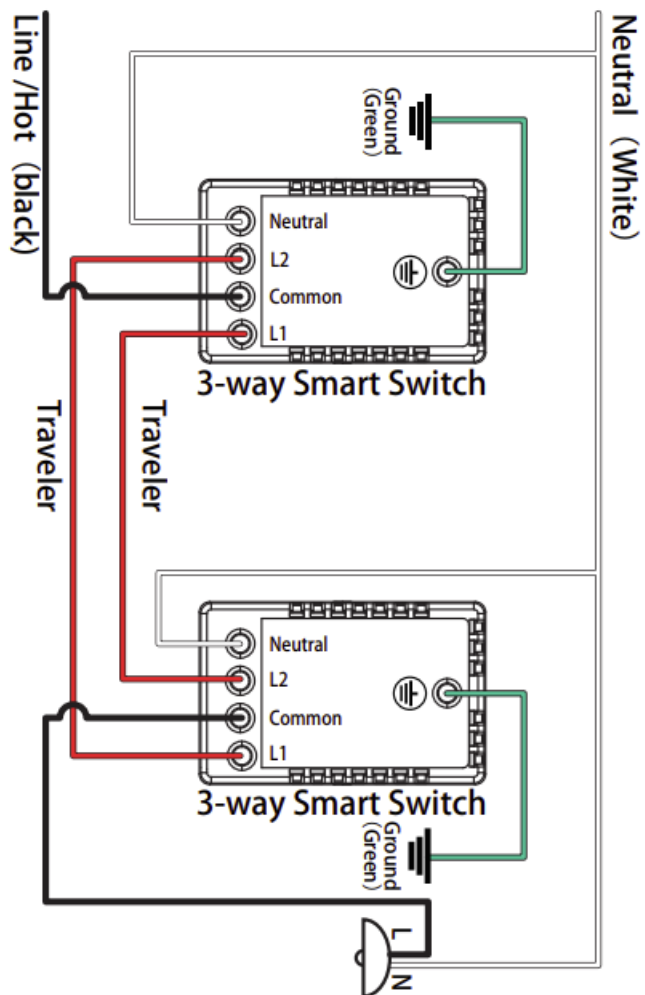
Cap off the remaining L 1 wire (RED) from the Switch with a wire nut.

Step 5b Wire the Smart Switch – 3-Way Replace ONE of your REGULAR 3-WAY SWITCHES with SMART SWITCH

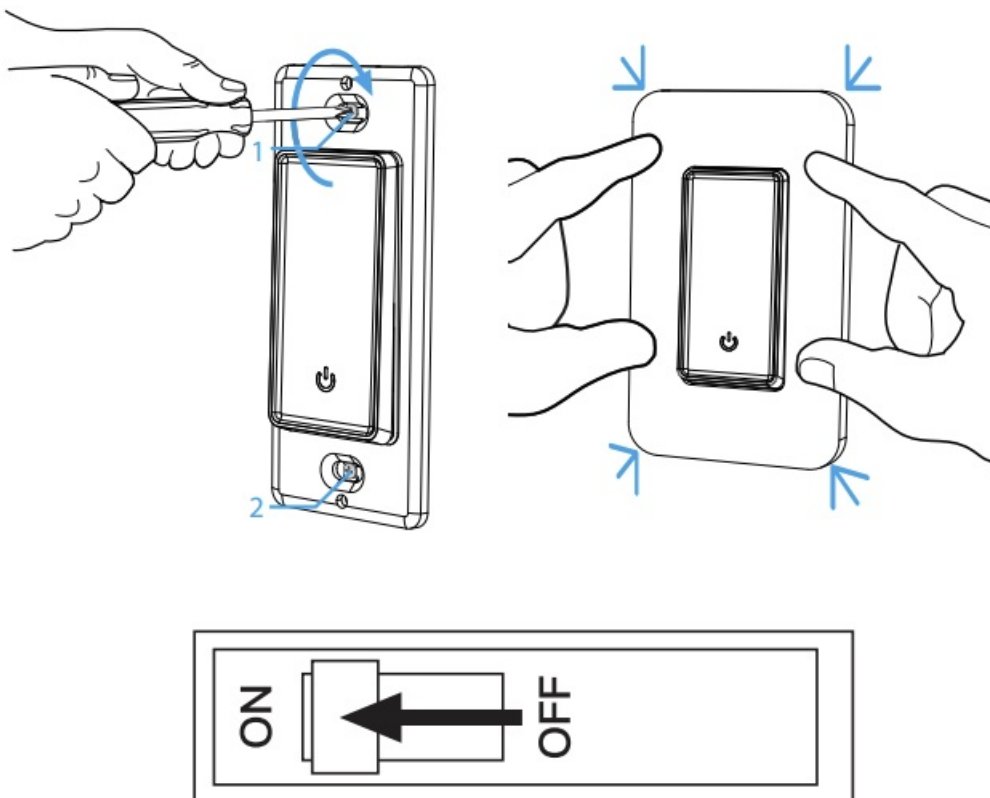




Replace BOTH of your REGULAR 3-WAY SWITCHES with SMART SWITCHES



Step 6 Mount the Switch and click in the wall plate and turn on power.



The light(s) may flash once during smart switch first time power up

Tuya App

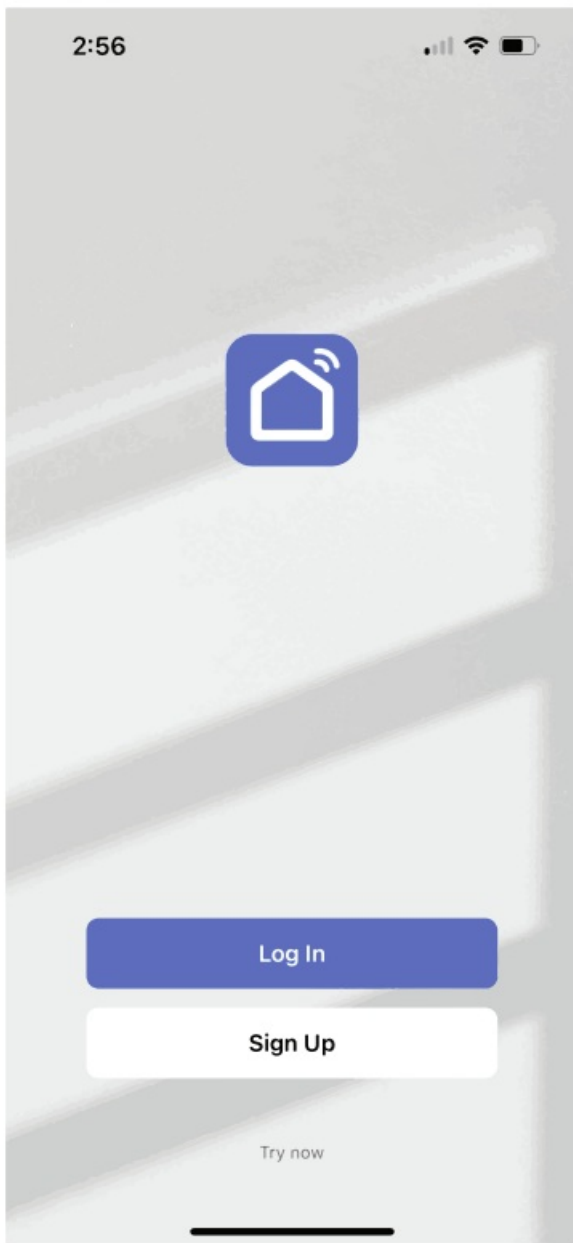
Step 1 Download the 'Smart Life' or Tuya App

- Scan the QR code below to download the 'Smart Life' App.
- You can also download this app in the app store/Android app store by searching "Smart Life" or "Tuya"



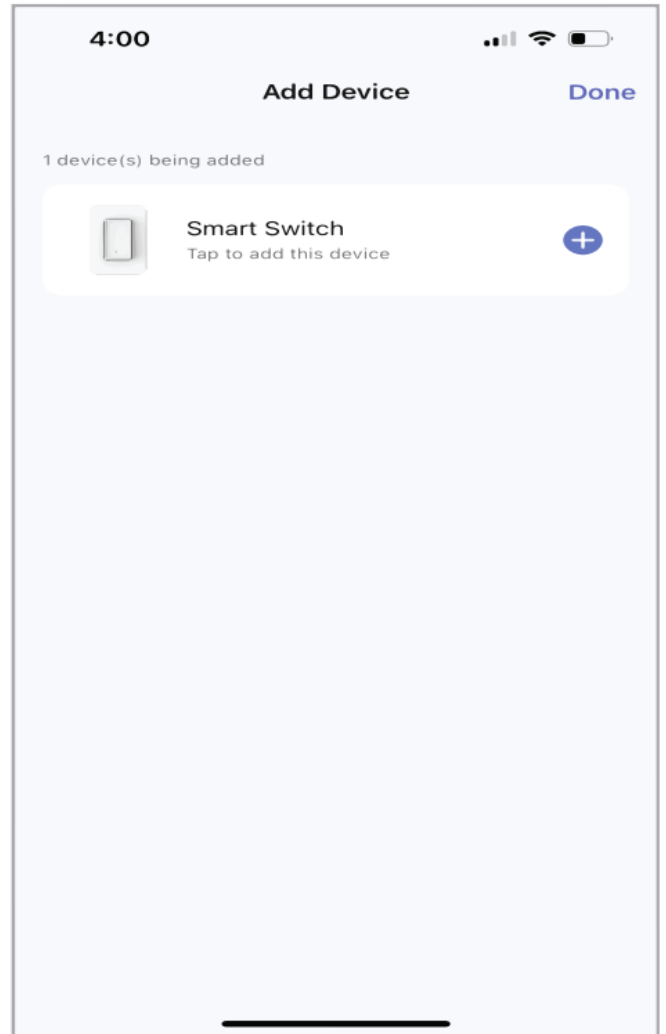
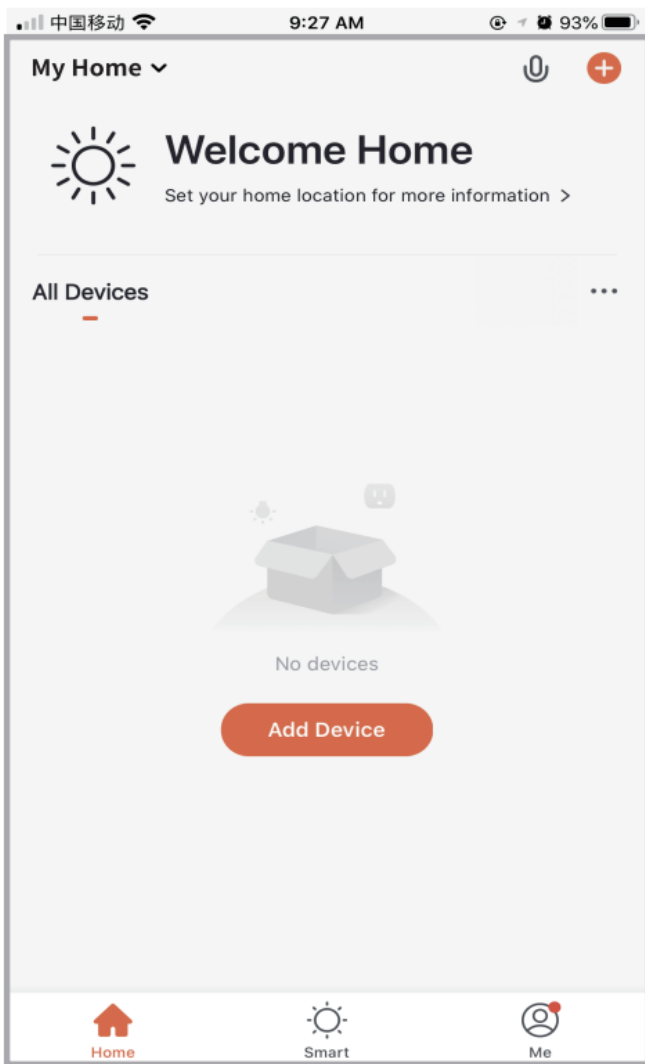
Step2 Register an account and Login

- Enter the Register/Login interface; tap "Register" to create an account by entering your phone number to get a verification code and setting your password. Choose "Log In" if you already have a Smart Life Account



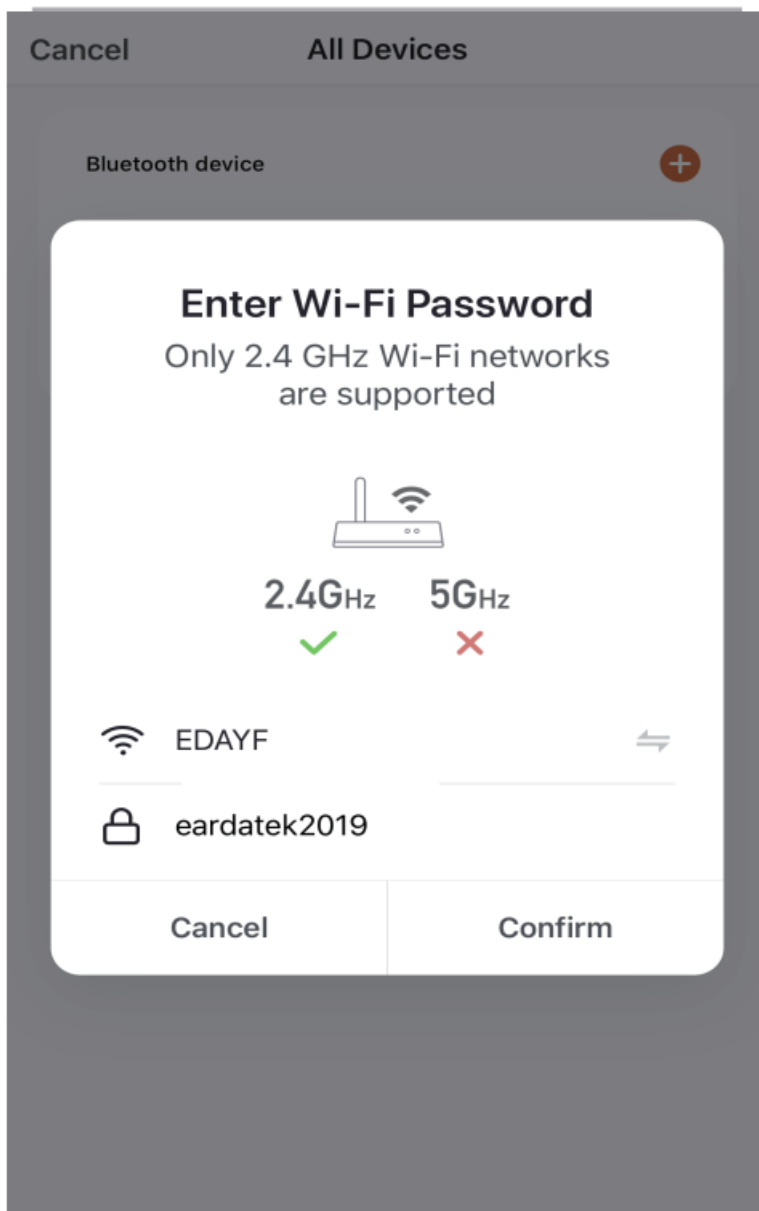
Step 3 Connect with the switch

- Click 'Add Device' or the ' + ' in the top right-hand corner.
- Click 'Electrical' then Switch (Wi-Fi) to enter the device connection interface.

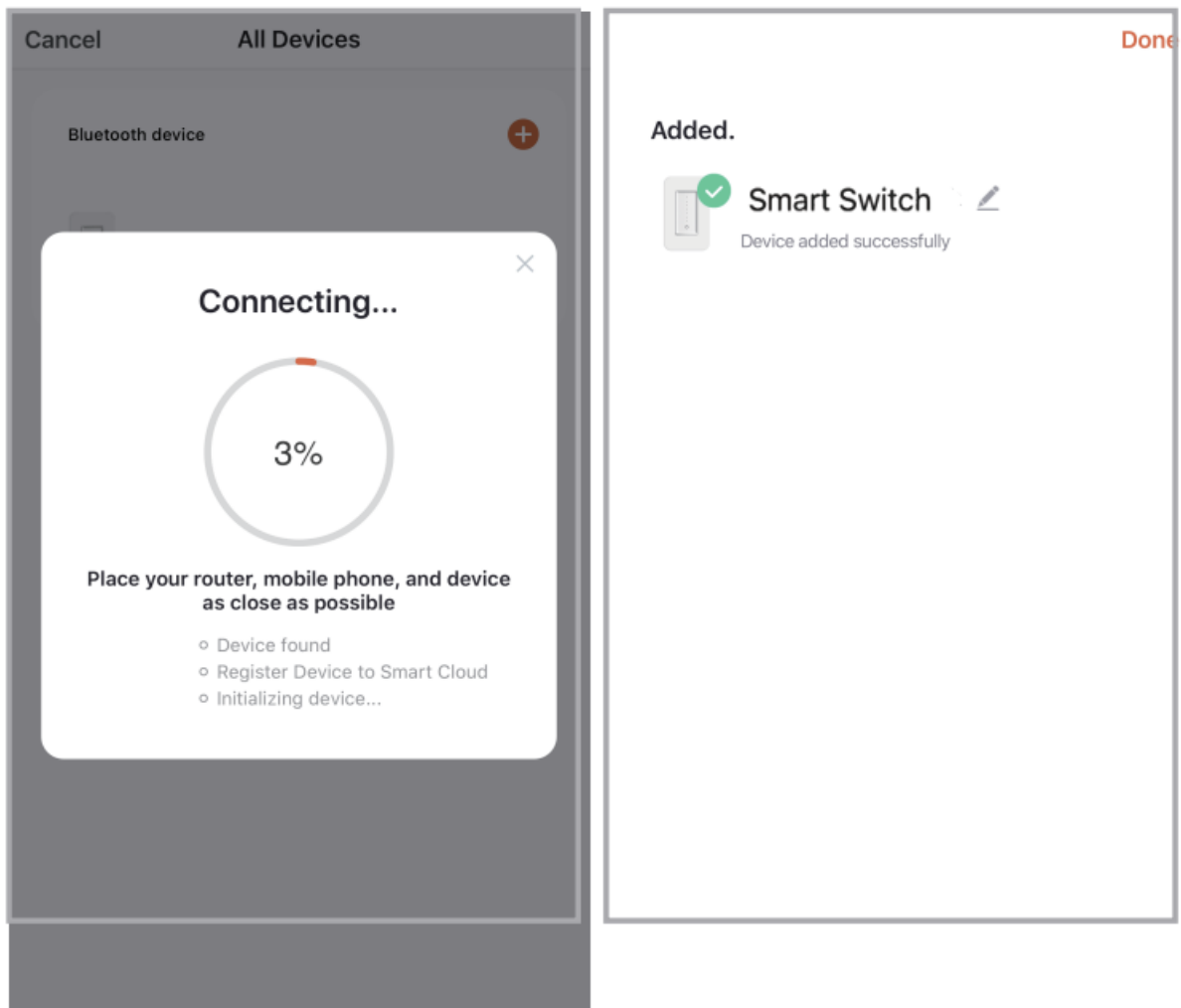


Step 3a Quick Configuration Mode

- Press and hold the Switch button for 8s to reset the switch & go into quick config. mode
- Select your home Wi-Fi and enter the password. Then click confirm to go to the next screen.



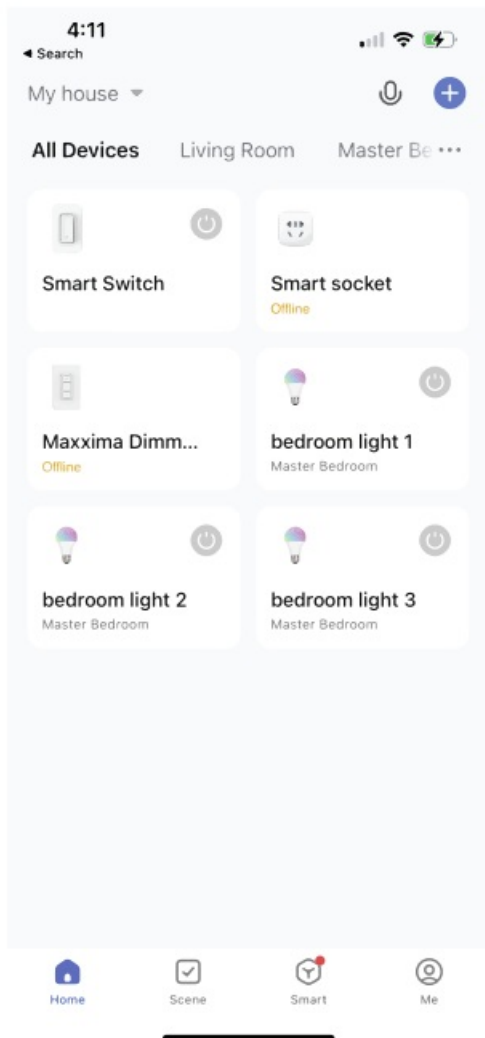
- Wait for the system to search for the device, connect, and configure the switch. It may take up to 3 min. to connect
- Once the device configures successfully, please input your preferred name and select a location for the switch.



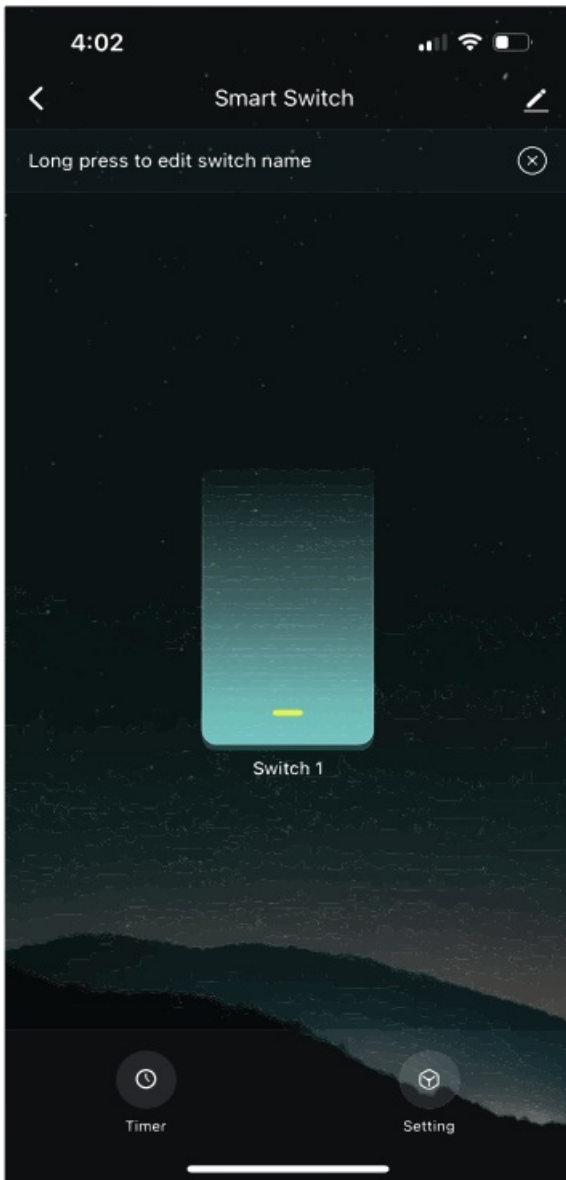
Troubleshooting

- Make sure you have good Wi-Fi signal strength at the location of the switch
- Metal box and MATEL Surface-wall board may block Wi-Fi signal
- Make sure input correct Wi-Fi password

Step 4 The switch can be viewed in the Main Menu



Step 5 Control the Switch through the App



- The app allows you to turn on and off the switch

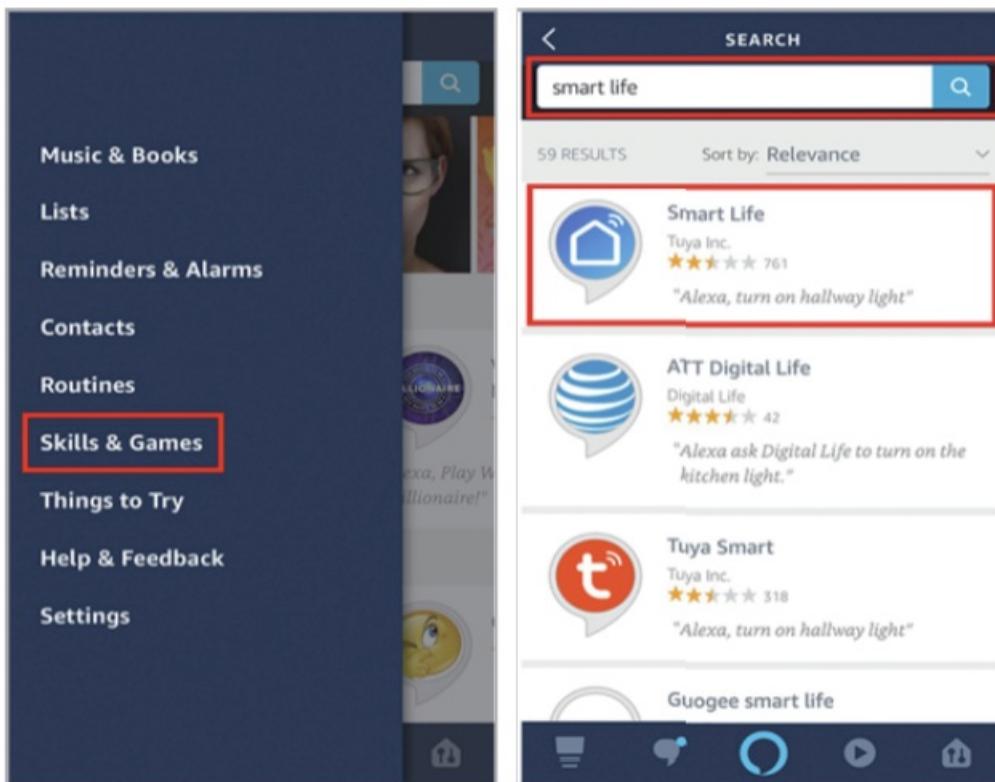
Step 6 Smart Life Skills (Alexa)

Step 1

Log in your Alexa account on a smart phone or a computer, then tap Home>Skills & Games

Step 2

Search "Smart Life" and select the right one according the blue logo {same with App}

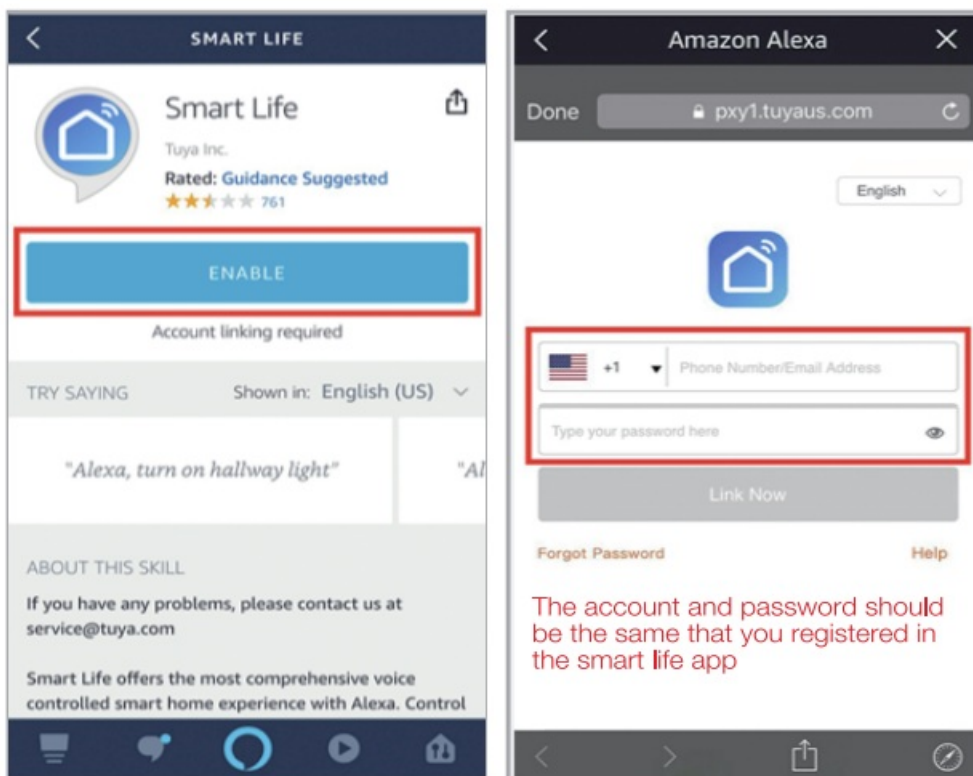


Step 3

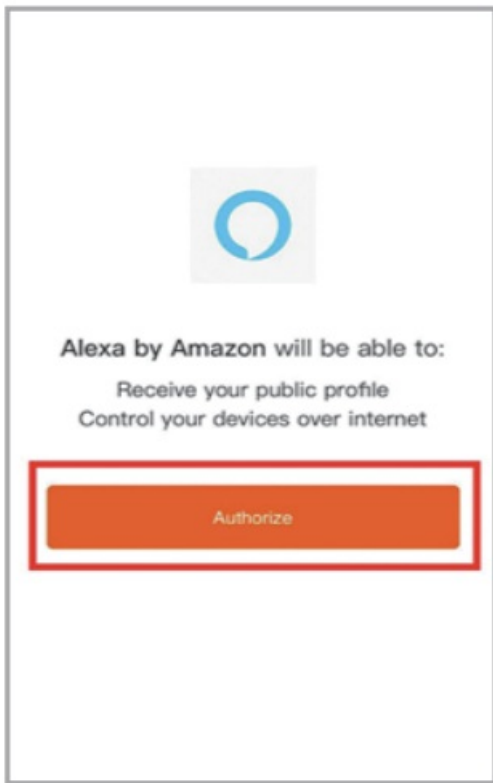
Enable the skill

Step 4

Login the account you registered on the App in Part 2, then click "Link Now"



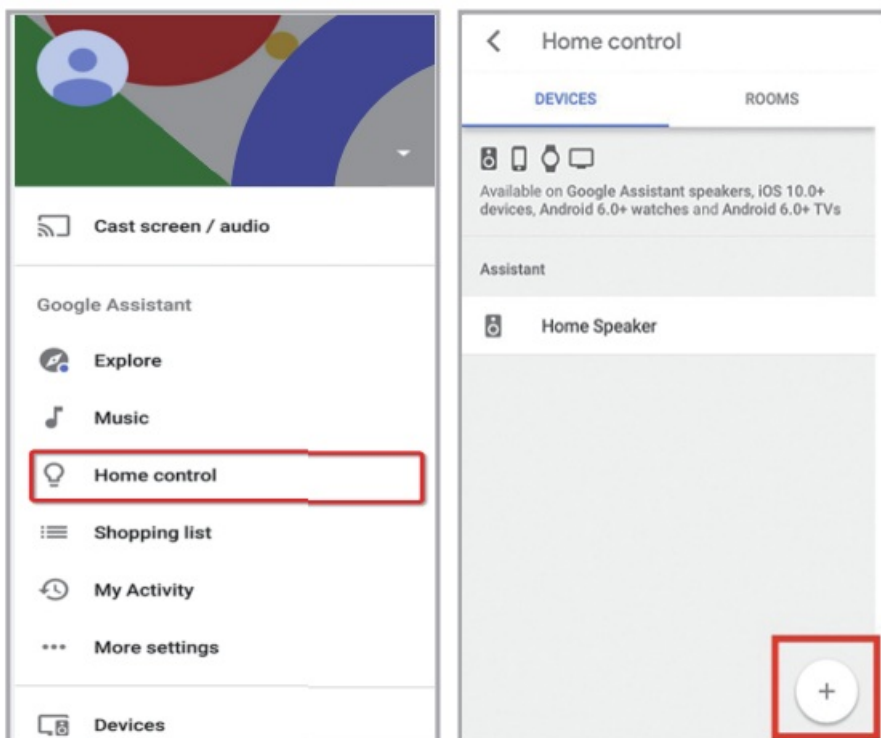
The Account is linked successfully, and then tap Authorize to Complete.



Step 7 Smart Life Skills (Google)

Step 1

Find "Home Control" in the hamburger menu on the Google Home app's home page > Home Control > tap 11+11.

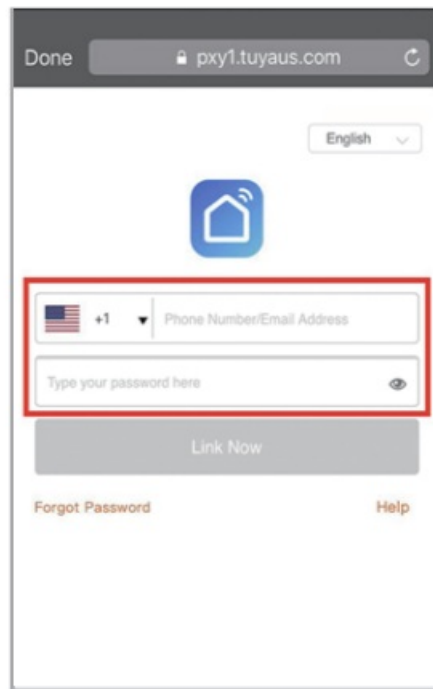
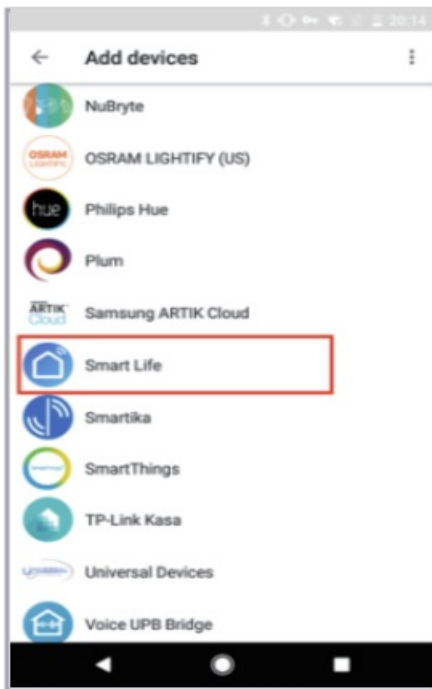


Step 2

Find "Smart Life" in the list

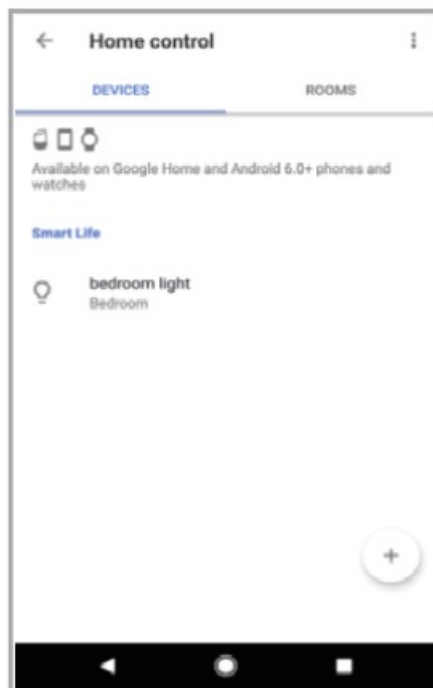
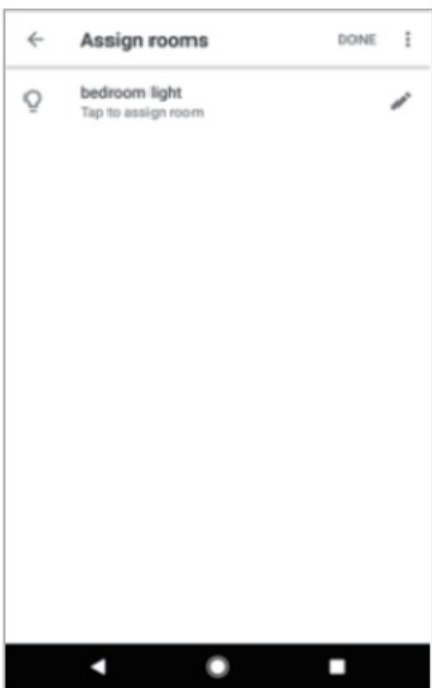
Step 3

Input your Smart Life account and password you registered in Part 2, then tap "Link Now".



Step 4

After you assign rooms for the Switch, your Switch will be listed in the Home Control page

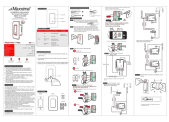


Step 5

Control your smart switch through Google Home Now you can control your smart switch through Google Home.

If you set the name as “bedroom light”, the supported voice commands are as below:
Ok Google, turn on bedroom light.





[Maxxima MEW-S1013DW 3-Way-Single Pole WiFi Smart Light Switch](#) [pdf] Instruction Manual

MEW-S1013DW, 3-Way-Single Pole WiFi Smart Light Switch, WiFi Smart Light Switch, 3-Way-Single Pole Light Switch, Light Switch, Switch