



MAXVIEW MXL056/KIT1 Bracket Fixing Kit Instruction Manual

[Home](#) » [MAXVIEW](#) » MAXVIEW MXL056/KIT1 Bracket Fixing Kit Instruction Manual 

Contents

- [1 MAXVIEW MXL056/KIT1 Bracket Fixing Kit](#)
- [2 Introduction](#)
- [3 Product Information](#)
- [4 Product Usage Instructions](#)
- [5 General Safety Warnings](#)
- [6 Kit Contents](#)
- [7 Typical Installation](#)
- [8 2 year guarantee](#)
- [9 Documents / Resources](#)
 - [9.1 References](#)
- [10 Related Posts](#)

MAXVIEW

MAXVIEW MXL056/KIT1 Bracket Fixing Kit



Introduction

The Roam Campervan Bracket Fitting Kit gives the flexibility to mount your 3G/4G Antenna anywhere on your roof without entering the cables directly below the Antenna. This allows you to route the cables to your preferred location using the supplied extension cables and cable entry cover. Alternatively you can utilise an existing cable entry you may already have on your roof. Please also refer to your Roam Campervan Installation and User Instructions at all times.

Product Information

The Roam Campervan MXL056/KIT1 Bracket Fixing Kit/Dachhalterung is a product designed to securely mount the Roam Antenna on the roof of a campervan. The kit comes with an antenna roof bracket, a cable entry cover, two extension cables, an M18 full nut, an M18 security washer, four bracket fixing screws, and eight cable clips. It is compatible with both flat roofs and most ridge roofs, making it versatile for different types of installations.

Product Usage Instructions

1. the Roam Installation Instructions to determine the best position for the antenna.
2. Choose the appropriate installation method based on your roof type:
 - **A** – Flat Roof Installation
 - **B** – Inside Ridge Roof Installation
 - **C** – Uneven Roof/Unebenes Dach

Note: Test the Roam Campervan in both horizontal and incline positions before installation to ensure optimal performance.

1. Mark the position of the bracket on the roof, ensuring that the short edge faces the front of the vehicle.
2. Clean the surface where the bracket and cable entry will be installed.
3. Select the preferred cable entry location and mark it on the roof. Check that the extension cables will fit your

chosen installation.

4. Securely attach the bracket to the roof using either the provided screws or a flexible adhesive.

Note: If using screws, attach the bracket before fitting the antenna.

1. Fit the Roam Antenna onto the bracket and secure it in place.
2. Install the cable entry cover and secure the extension cables using the provided cable clips.
3. Test the antenna to ensure optimal performance.

General Safety Warnings

Read these instructions carefully and become familiar with your Maxview product. Understand the application, limitations and any hazards involved with the installation and operation. Failure to follow all instructions may result in damage to your vehicle and/or serious injury. Maxview declines all responsibility in the event of incident or accident if they are due to a non observation of the installation instructions or the way the product is used. No modifications to the product are permissible.

Installation

- Always consider the additional height the product you install adds to the vehicle
- Always follow manufacturer's operating instructions before using tools and equipment.
- Take care when working at heights. Keep work area clean and tidy to avoid trip hazards
- Use creeper boards where necessary to ensure roof construction can support your weight
- All electrical work should be carried out by a competent person

Operation

- The maximum speed of vehicle with product mounted on roof is 81mph (130km/h)

Servicing & Support

- Any inspection or repair must be carried out by Maxview or an appointed representative of the manufacturer
- No regular maintenance required on the product
- Do not dismantle product
- Do not use solvent or abrasive cleaning agents on the product
- Only use a suitable mild detergent to clean the product
- Do not pressure wash the product
- We recommend you check the mechanical integrity of a roof mounted product at least once a year
- If in the event that you do experience a problem with the product, call Maxview Customer Service +44 (0)1553 811000

Kit Contents

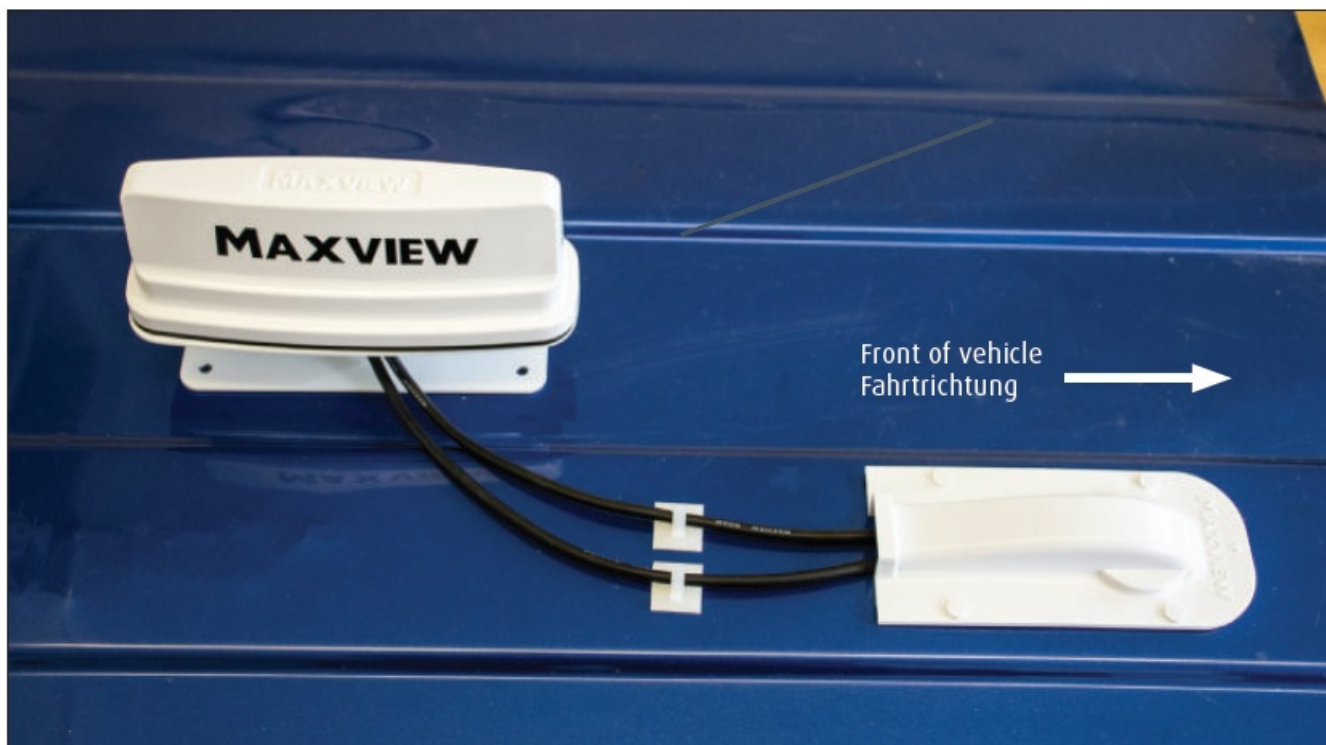


- 1x Antenna Roof Bracket
- 1 x Cable Entry Cover
- 2 x Extension Cables
- 1 x M18 Full Nut
- 1 x M18 Security Washer
- 4 x Bracket fixing Screws
- 8 x Cable Clips

Tools required

- Power Drill
- 2.5mm Drill Bit
- 12mm Drill Bit (Cable Entry)
- Cleaning Cloth
- Pozi Screwdriver (optional)
- Flexible Adhesive (optional)
- Self – Amalgamating Tape (Recommended in some installations)

Typical Installation



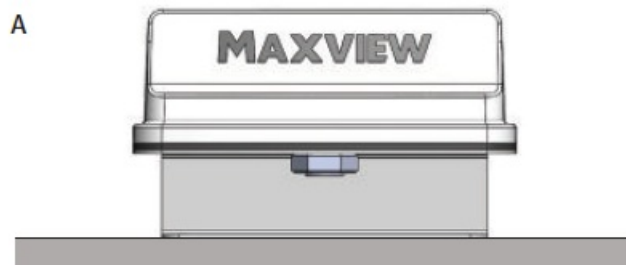
1. Positioning your Roam.

Please refer to page 6 of your Roam Installation Instructions to find the best position.

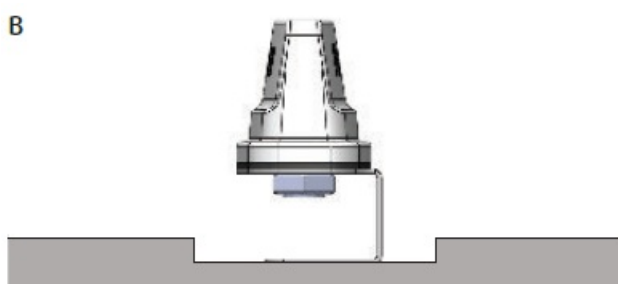
2. Positioning your Bracket

The Bracket can be used on flat roofs and most ridge roofs.

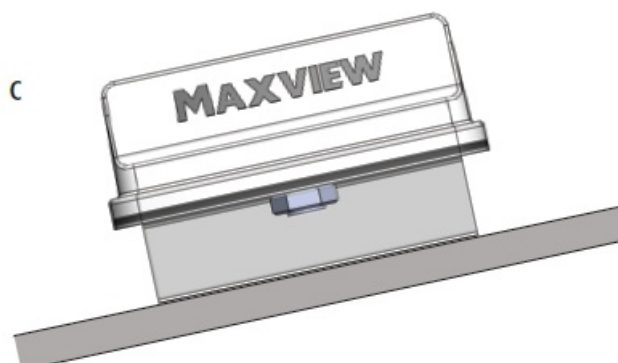
- **A** – Flat Roof Installation



- **B** – Inside Ridge Roof Installation



- **C** – Sloped Roof



In some installations you may find that you need to install your Roam Campervan on an incline, although we always recommend a flat installation to maximise Antenna performance.

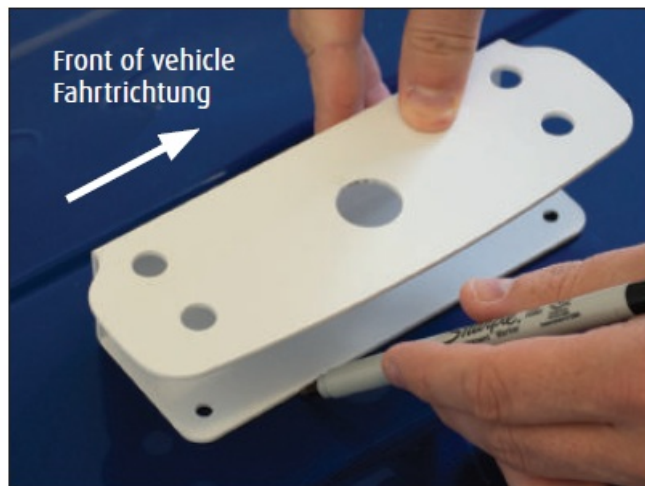
This is useful for an Elevated Roof (Pop Top) installation where you may use your Roam Campervan with both the Roof flat and at an incline.

We highly recommend that when installing the Antenna on any incline you test the Roam Campervan before installation in a horizontal position and again in the incline position to satisfy yourself of the performance.

Uneven Roof

If installing on an uneven surface such as a cheque grid plate please ensure adequate sealant is used around the mounting holes to prevent water ingress.

3. Once you have a suitable position mark on the roof the position of the bracket.



NOTE: Remember to position the bracket so the short edge is facing the front of the vehicle.

4. Once you have selected a suitable position for your Roam Antenna select the cable entry location.

Option 1 – Use supplied Cable Entry Cover

Option 2 – Use Existing Entry*

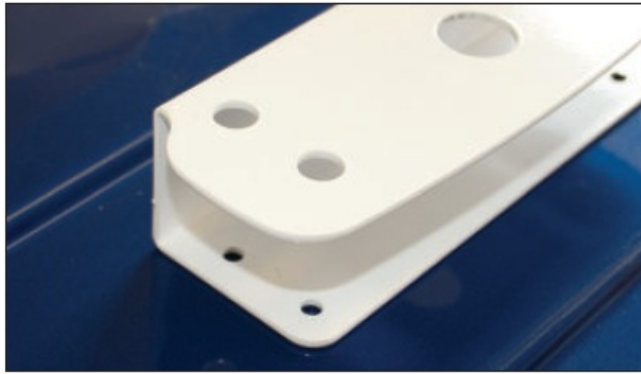
*You may prefer to use an existing cable entry

Once you have a preferred entry point it is important to check the Extension Cables will fit your chosen installation. Mark the position of the Cable Entry on the roof.

5. Clean the surface where the bracket and the cable entry will be installed, ensuring it is free from debris and grease.

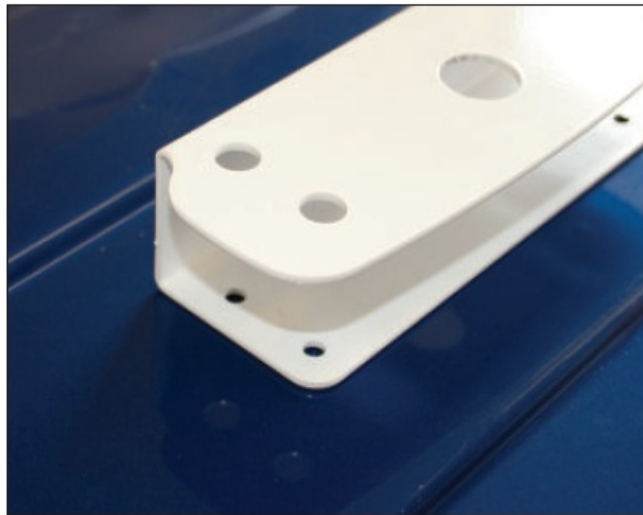


6. The bracket can be fitted with the screws provided in the 4 positions or with a Flexible Adhesive.



A. If you wish to screw the bracket to your roof you must do this before you fit the antenna.

- Screw Fixing Method/Schraub be festigungs methode Secure to the roof in 4 places using the mounting screws provided. Ensure you place a small amount of flexible sealant in each mounting hole before screwing to the roof.
- **B.** Flexible Adhesive Method/Halterung verkleben If using this method we recommend completing steps 7-10 before fixing to your roof.



Alternatively, the bracket can be secured with a suitable flexible adhesive sealant. We recommend Sikaflex-512 caravan, Sikaflex 221i oder 252i.

For full guidelines and curing times please refer to the manufacturer's instructions.

For safety we always recommend using screws in addition to flexible adhesive.

7. Pass the cables through the bracket hole.



8. Remove the self-adhesive backing from the 3M seal.



9. Fit the Roam Antenna to the Bracket – Press firmly around the edges of the antenna to ensure a watertight seal has been achieved.



IMPORTANT – Ensure the position of the antenna is central to your markings, as once stuck down, the antenna is not designed to be removed.

10. **Attach the securing washer and nut from the underside of the bracket.**



Turn clockwise onto the thread protruding from the bottom of the antenna and continue to tighten using the correct tool until there is slight compression to the seal underneath the antenna. Do not over tighten.

11. **Extension Cables.**



When using the Extension cables take care to ensure the pins are aligned correctly before tightening the connectors together.

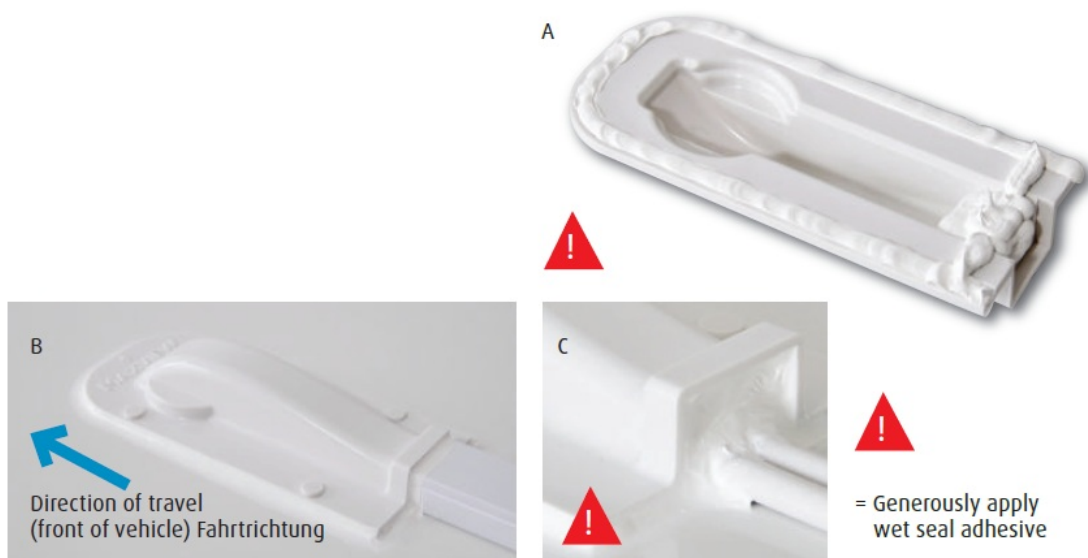
The Roam Campervan comes with 0.3m or 0.8m cables as standard. If the chosen cable entry point is further than 0.8m away from the Roam Antenna the join will be external and exposed on the roof. With this installation it is important to make sure the join is waterproofed. We recommend to use Self- Amalgamating Tape (not supplied).

12. Route the cables along the roof securing with the cable clips provided in equal spacing.

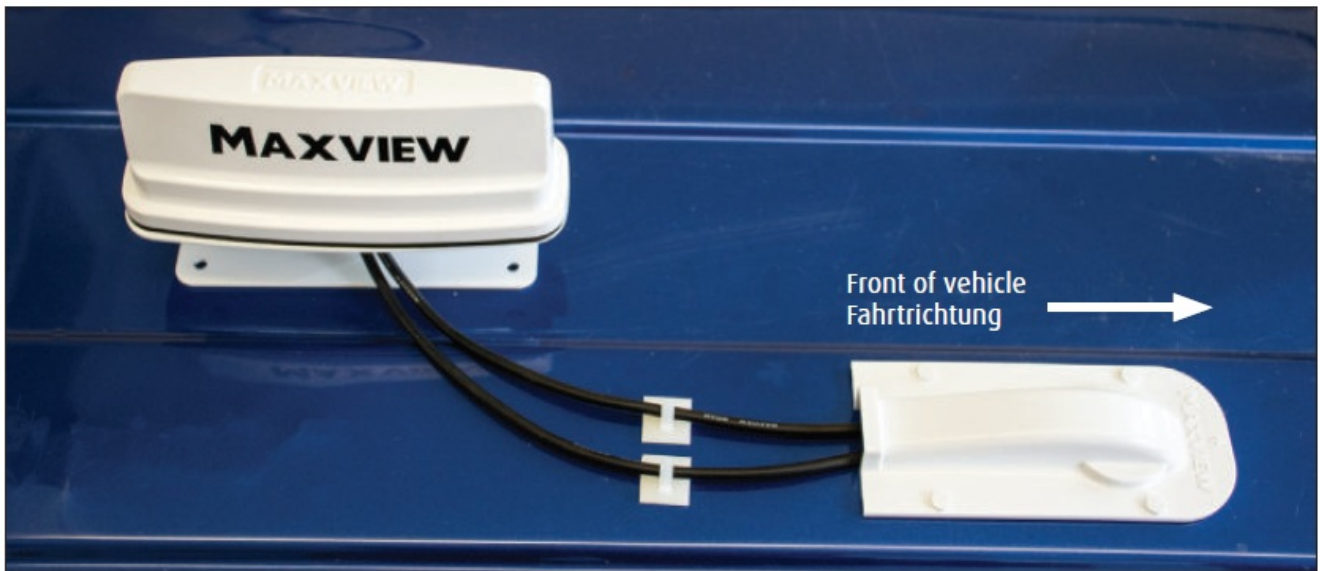
13. **Install Cable Entry Cover:** Plan your installation

1. Drill hole in roof
2. Prepare surface for adhesion
3. We recommend to add sealant around the cables that go through the roof to add protection for water ingress.
4. Apply sealant as shown A, B & C (we recommend Sikaflex-512 Caravan)
5. Position cable entry cover
6. Wipe excess sealant with a dry cloth

Applying sealant example



14. Complete Installation



15. Internally route the cables to your router. Refer to of your Roam Installation Instructions.

2 year guarantee

This Bracket is guaranteed against defective parts or workmanship for 2 year from the time of purchase. This excludes any malfunction caused by improper use, accidental or malicious damage. This does not affect your statutory rights. Please keep your receipt of proof of purchase.

Certification and Environment

Designed, constructed and marketed in compliance with the safety and product requirements of the relevant EEC Directives. Products marked with the crossed out wheely bin must not be disposed of with normal household waste but made available for separate household collection. Separate collection of used products and their packaging allows materials to be recycled and used again. Re-use of recycled materials helps prevent environmental pollution and reduces the demand for raw materials. UK Conformity Assessed (UKCA) marking is a certification mark that indicates conformity with the applicable requirements for products sold within Great Britain.

UK contact:

Helpline: +44 (0)1553 811000

Email: support@maxview.co.uk

Web: www.maxview.co.uk

Address: Maxview Ltd, Garage Lane, Setchey, King's Lynn, Norfolk. PE33 0AT. UK


DE Kontakt:

Tel: 08145 / 996 998 – 0

Email: info@maxview.de

Web: www.maxview.de

Documents / Resources

 <p>Roam Companion MAXVIEW Bracket Fixing Kit/Deckhalterung Installation Instructions Anbauanleitung</p>	<p>MAXVIEW MXL056/KIT1 Bracket Fixing Kit [pdf] Instruction Manual MXL056 KIT1 Bracket Fixing Kit, MXL056 KIT1, Bracket Fixing Kit, Fixing Kit, Kit</p>
---	--

References

- **M** [Satellite TV, Terrestrial TV and WiFi for Motorhomes, Caravans and More!](#)
- **M** [Startseite - MAXVIEW](#)

Manuals+.