


**R5(F)-50 RSX LED
Lighting System**



maxspect R5(F)-50 RSX LED Lighting System Owner's Manual

[Home](#) » [maxspect](#) » maxspect R5(F)-50 RSX LED Lighting System Owner's Manual 

Contents

- 1 maxspect R5(F)-50 RSX LED Lighting System
- 2 Product Usage Instructions
- 3 Package Content
- 4 Precautions
- 5 Installation
- 6 Operating Instructions
- 7 Setting the clock
- 8 Programming Photoperiod
- 9 Selecting Preset
- 10 Maintenance Instructions
- 11 Specifications
- 12 Limited Warranty
- 13 Preset
- 14 Documents / Resources
 - 14.1 References



maxspect R5(F)-50 RSX LED Lighting System



Specifications

- Models: R5(F)-50, R5(F)-100, R5(F)-150, R5(F)-200, R5(F)-300
- Package Contents:
 - R5(F)-50: Power Supply Unit, Power Cable, Stands, Thumb Screws
 - R5(F)-100/150/200/300: Power Supply Unit, Power Cable, Stands, Thumb Screws, PVC Sticker Screws

Product Usage Instructions

Precautions

Before using the Maxspect™ RSX LED Lighting System:

1. Remove any plastic bags and packaging material protecting the fixture.
2. Avoid looking directly at the LED bulbs when switching on the system to prevent eye hazard.

Waste Disposal

Dispose of the product and batteries accordingly:

1. Recycle electronic devices according to regulations; dispose of batteries separately.
2. Return all used batteries/rechargeable batteries to designated collection points to protect the environment.

Installation

Mounting the RSX LED Lighting System:

Tank-top mounting:

For R5(F)-50:

1. Step 1
2. Step 2

3. Step 3

For R5(F)-100/150/200/300:

1. Step 1

2. Step 2

3. Step 3

4. Step 4

Pendant Mounting (hanging Kits sold separately):

Operating Instructions

Built-in Controller

The RSX can be controlled directly with the built-in controller featuring an OLED monitor and a control dial for setup.

Standard or Master/Slave Mode

In Master/Slave mode, multiple RSX fixtures can be connected to control them simultaneously. Slave fixtures mirror settings from the Master fixture.

Control with iOS or Android Devices (Optional)

Wirelessly connect the RSX to an ICV6 controller for control via iOS or Android devices through the Syna-G System.

Basic Operations

Follow these instructions to operate and program the RSX LED fixture.

FAQs

- Q: Can I purchase additional stands for mounting?

A: Yes, additional stands for mounting are available separately.

- Q: Is the ICV6 controller necessary for operating the RSX LED fixture?

A: The ICV6 controller is optional for wireless control via iOS or Android devices.

Dear Customer

Thank you for purchasing this product.

For optimum performance and safety, please read these instructions carefully.

User

- Memo:
- Date of purchase:
- Dealer name:
- Dealer address:
- Dealer website:
- Dealer e-mail
- Dealer phone no.

Please visit us on Facebook or twitter!

- <https://www.facebook.com/Maxspect>
- <http://twitter.com/maxspectled>

Package Content

Please check the content in the package

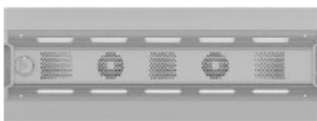
R5(F)-50



R5(F)-100



R5(F)-150



R5(F)-200

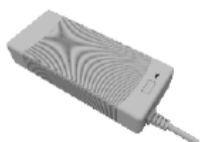


R5(F)-300



R5(F) 50

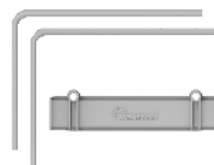
Power Supply Unit



Power Cable



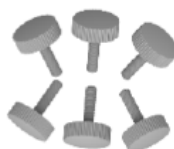
Stands



ThumbScrews



ThumbScrews



R5(F) 100/150/200/300

Power Supply Unit



Power Cable



PVC Sticker



Stands



ThumbScrews



Screws



Precautions

Before using this Maxspect™ RSX LED Lighting System please read these operating instructions carefully. Take special care to follow the safety suggestions listed below. Afterwards keep this manual handy for future reference.

Before using the Maxspect™ RSX LED Lighting System

1. Remove any plastic bags and packaging material protecting the fixture.
2. Never look directly at the LED bulbs when you switch on the system. Incorrect use of this apparatus will increase eye hazard.

On Safety

1. Power Source – Do not defeat the safety purpose of the polarized or grounding-type plug. A polarized plug has two blades with one wider than the other. A grounding-type plug has two blades and a third grounding prong. The wide blade or the third prong are provided for your safety. If the plug does not fit into your outlet, consult an electrician for the replacement of the obsolete outlet.
2. Power Cord Protection – The power supply cords should be routed so that they are not likely to be walked on or pinched by items placed upon or against them. Never take hold of the plug or cord if your hand is wet, and always grasp the plug body when connecting or disconnecting it.
3. Installation – Install indoor only, and use the attachments, mounting frames, hanging kit and accessories provided and specified by the manufacturer.

On Operation

1. Operation – Always follow the operation instructions outlined in this manual when using this Maxspect™ RSX LED Lighting System.
2. Heat – The apparatus should be situated away from heat sources such as radiators, and do not be exposed to excessive heat such as sunshine, fire or the like.
3. Moisture – To reduce the risk of fire or electric shock, do not expose this apparatus to rain, moisture, dripping or splashing.
4. Ventilation – The apparatus should be situated so that its location or position does not interfere with its proper

ventilation.

5. Magnetism – The apparatus should be situated away from equipment or devices that generate strong magnetism.
6. Cleaning – Clean only with dry cloth.

Waste Disposal

1. Product: Electronic devices are recyclable waste and must not be disposed of in the household waste. At the end of its service life, dispose of the product according to the relevant statutory regulations. Remove any inserted (rechargeable) batteries and dispose of them separately from the product.
2. (Rechargeable) batteries: You as the end user are required by law (Battery Ordinance) to return all used batteries/rechargeable batteries. Disposing of them in the household waste is prohibited. Used (rechargeable) batteries can be returned to collection points in your municipality or wherever (rechargeable) batteries are sold. You thus fulfill your statutory obligations and contribute to the protection of the environment.
3. As a producer in terms of the German ElektroG, we are registered with the German registration authority Stiftung Elektro-Altgeräte-Register (Nordostpark 72, 90411 Nürnberg), having been granted the following WEEE registration number: DE21010727.

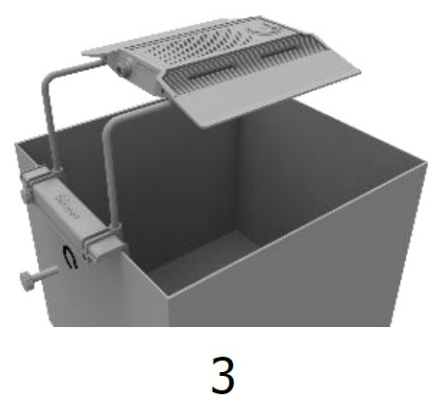
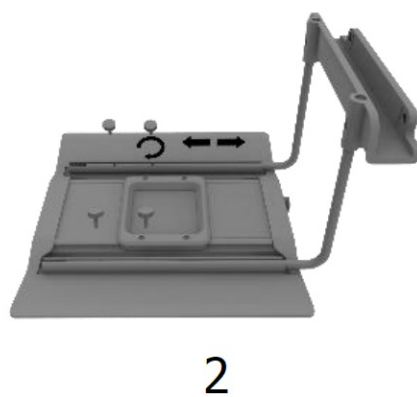
Installation

Mounting the RSX LED Lighting System

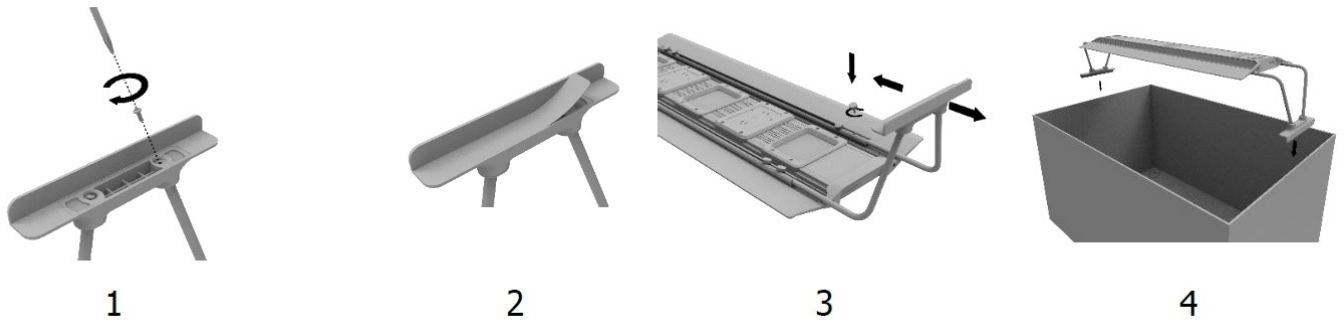
Before connecting the RSX to the power supply, first mount the system by using the provided stand.

Tank-top mounting

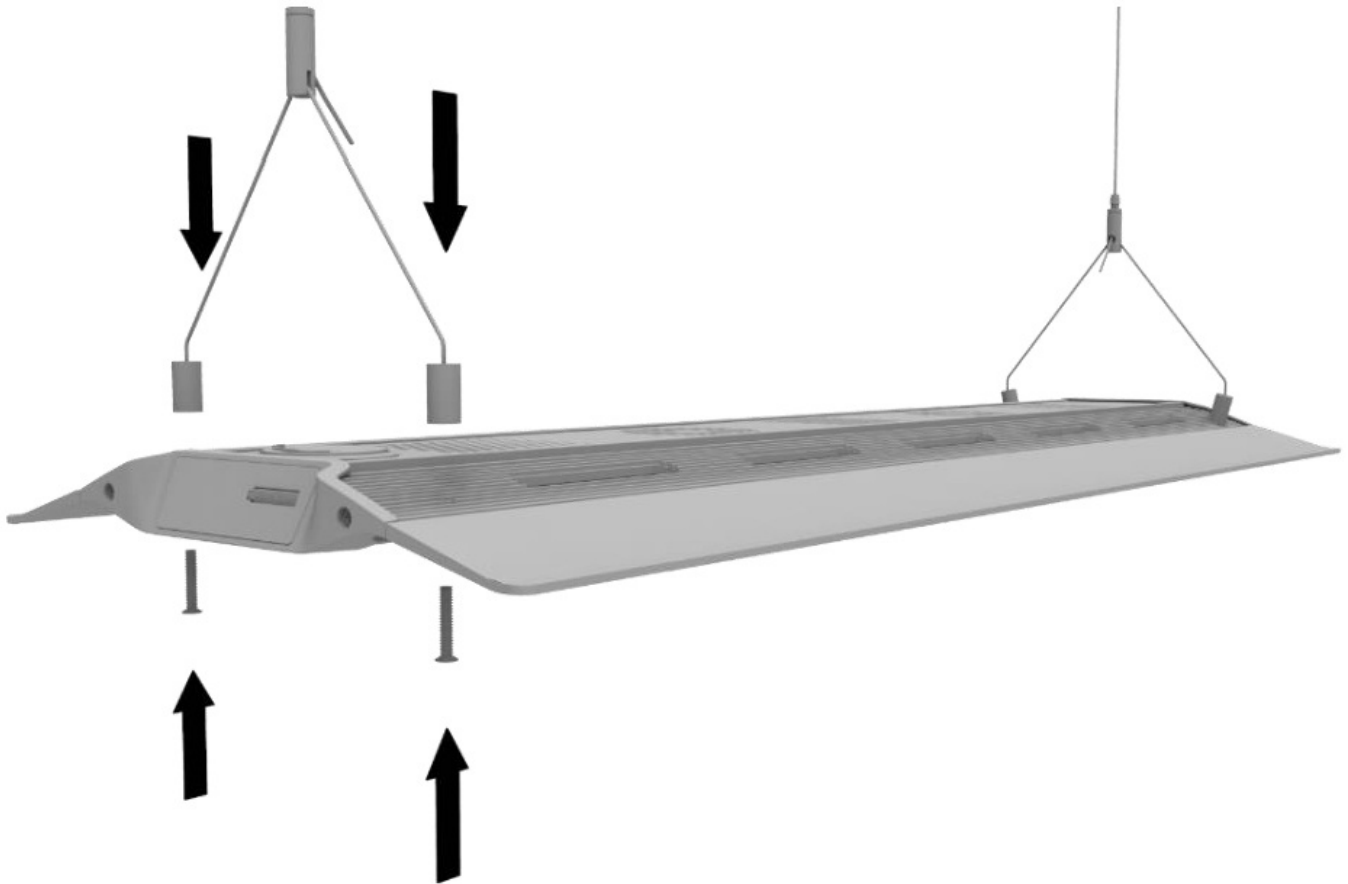
R5(F)-50



R5(F)-100/150/200/300



Pendant Mounting (hanging Kits sold separately)



Operating Instructions

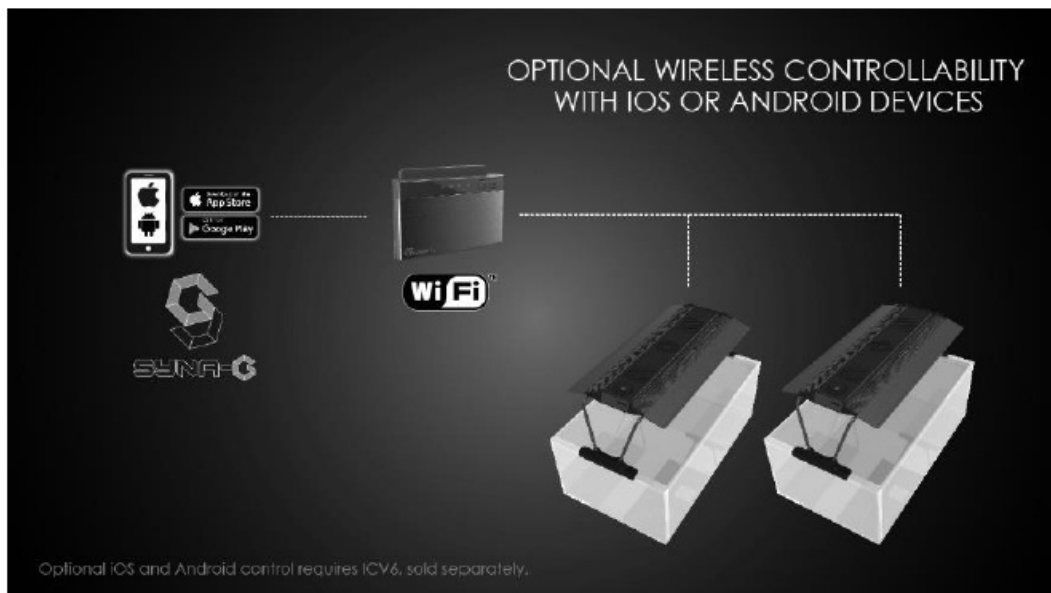
Built-in Controller

The RSX can be controlled directly with the built-in controller. The built-in controller integrated in the RSX features an OLED monitor and a control dial, from which user can setup all the functions for the fixture.



Standard or Master/Slave Mode

Suppose there are 2 or more units of RSX fixtures, the user can connect them through the Master/Slave mode to control them simultaneously – all Slave fixtures will follow the settings programmed on the Master fixture, saving time and effort on setting up multiple fixtures.



Control with iOS or Android Devices (Optional)

The RSX can also be wirelessly connected to an ICV6 controller (sold separately), which allows the fixtures to be controlled by iOS or Android devices through the Syna-G System.

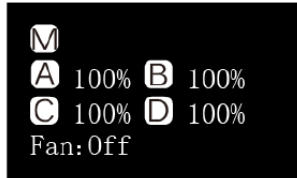
Basic Operations

- Follow the instructions below to operate and program the RSX LED fixture.
- The RSX turns on automatically when power is connected, and turns off when power is cut.
- When power is resumed, the RSX will restore to the previously saved setting automatically, whether it was last set at Manual or Automatic Mode, and the intensity level of all the LED channels.

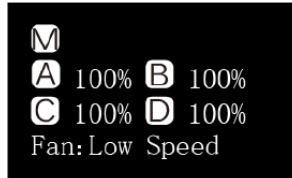
The fan on the RSX fixture is temperature-controlled.

- The RSX has a built-in temperature control system. The fan will be automatically engaged when the

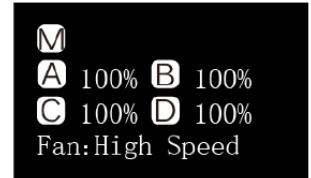
temperature is above 55°C/131°F, and disengage when it is below 45°C/113°F.



Below 45°C/113°F



Above 55°C/131°F



Above 65°C/149°F

- If the fan fails, the system may overheat and the system will enter fail-safe mode when the temperature is above 80°C/176°F, turning off all channels. The system will exit fail-safe mode and resume normal operation when the temperature drops below 70°C/158°F.

Switching between Auto and Manual Mode

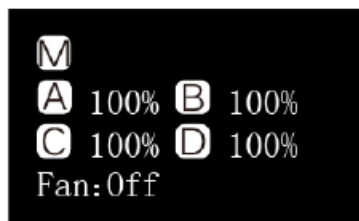
The RSX has two modes of operation: Auto and Manual Mode. Users can switch between the two modes with the control dial on the fixture.



- Press and hold the control dial for 3 seconds to switch to another mode.

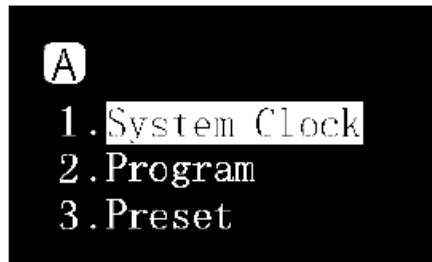


Manual Mode



- Press the control dial to enter the setting.
- Press the control dial again to switch between the channels.
- Rotate the control dial to set the brightness for each LED channel.
- Press and hold the control dial for 3s to save the setting and exit the page.

Automatic Mode

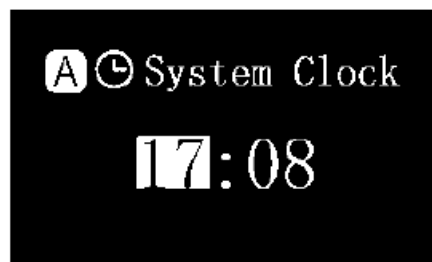
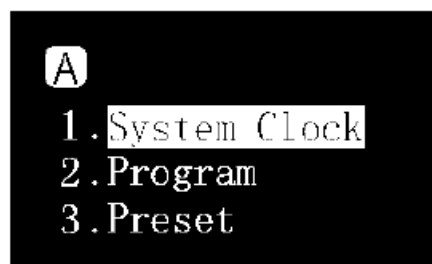


- Press the control dial to enter the setting.
- Rotate the control dial to switch between the settings.
- Press and hold the control dial for 3s to save the setting and exit the page.

Within Automatic Mode, there are 3 settings for the user to select:

- System Clock: A clock set to be matched with users' local time.
- Program: Program the photoperiod to set specific brightness for each LED channel during different times of the day.
- Preset: 4 preset settings are available for the user to choose from. (Refer to p.16)
 - P1: SPS dominated tank.
 - P2: SPS/LPS mixed tank.
 - P3: Soft Coral/LPS mixed tank.
 - P4: SPS-dominated tank with a different dawn/dusk time with moonlight.

Setting the clock



- Press the control dial to enter the setting page and then select "System Clock" Clock".
- Press the control dial to switch between hour and minute.
- Rotate the control dial to set the time.

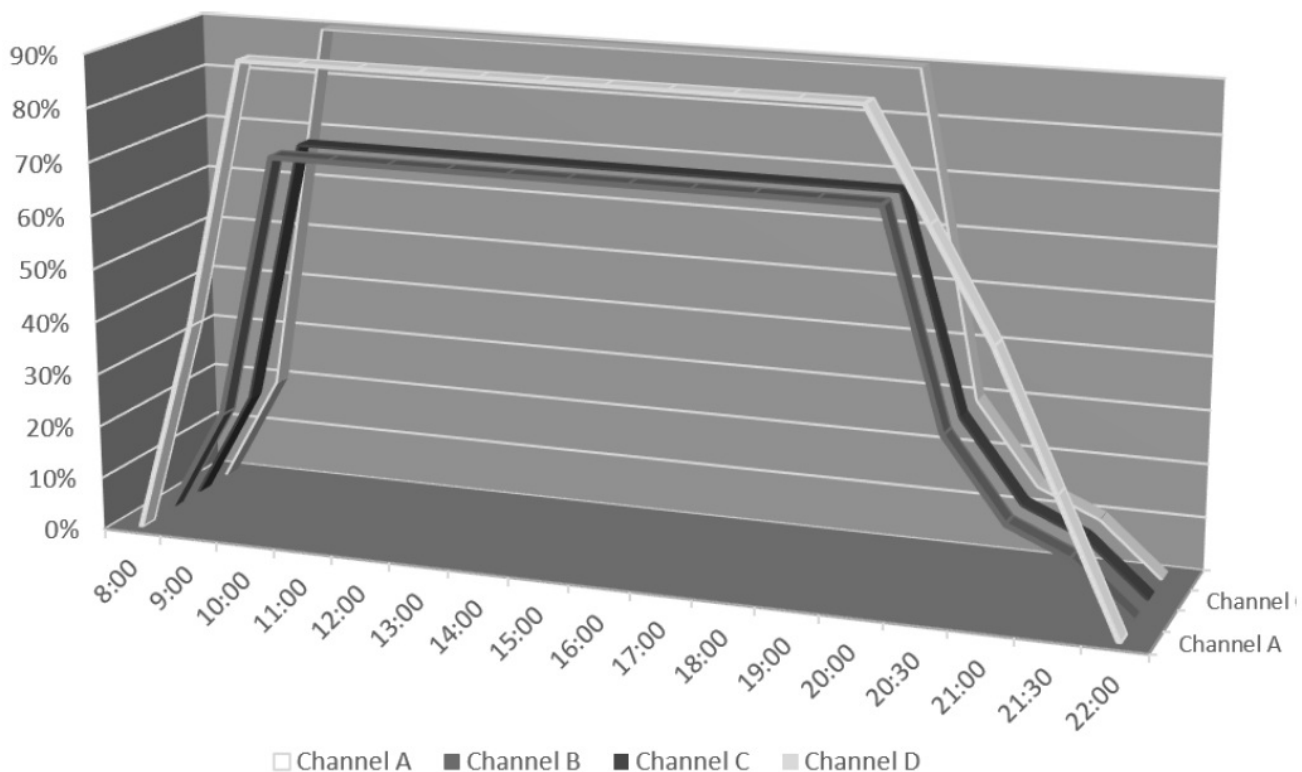
- Press and hold the control dial for 3s to save the setting and exit the page.

Understanding Time Points

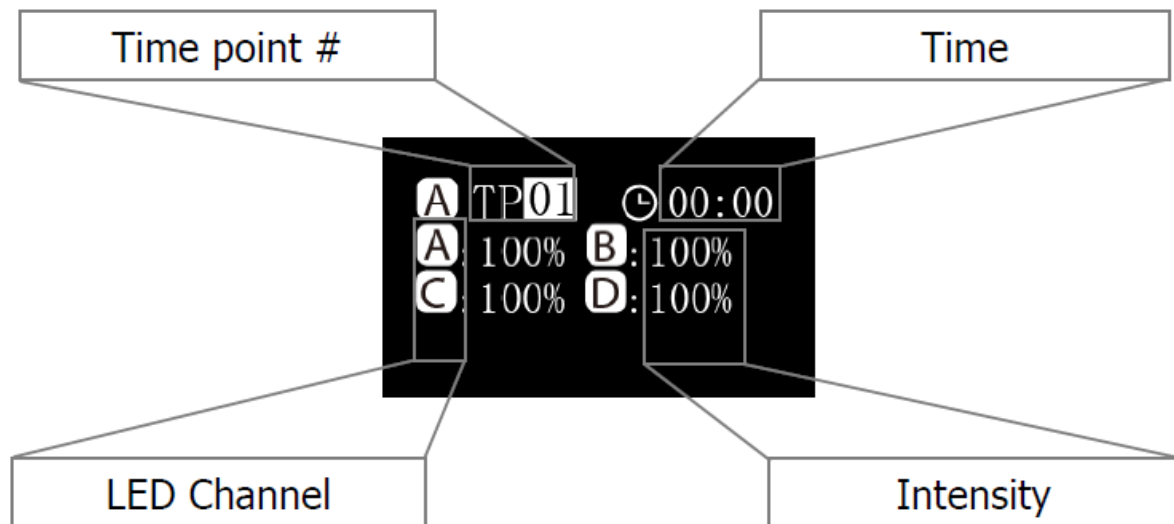
- There are a total of 24 Time Points. You can program different luminous output intensities at each Time Point to control the photoperiod and brightness of the system.
- Take Preset P1 as an example, it is a setting for SPS dominated tank. The photoperiod starts at 08:00 where the system increases s light gradually, peak s at 10:00 and lasts 10 hours to 20:00 before the system gradually decreases s light until it is turned off at 22:00 , with moon light turns on.

	TP01	TP02	TP03	TP04	TP05	TP06	TP07	TP08
	08:00	09:00	10:00	20:00	20:30	21:00	21:30	22:00
Channel A	0%	40%	90%	90%	70%	50%	25%	0%
Channel B	0%	20%	70%	70%	30%	15%	10%	0%
Channel C	1%	20%	70%	70%	30%	15%	10%	1%
Channel D	0%	20%	90%	90%	30%	15%	10%	0%

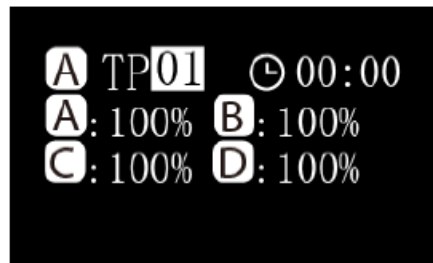
The following diagram illustrates how the 4 LED channels would behave once the above Time Points have been programmed.



Programming Photoperiod



Modify



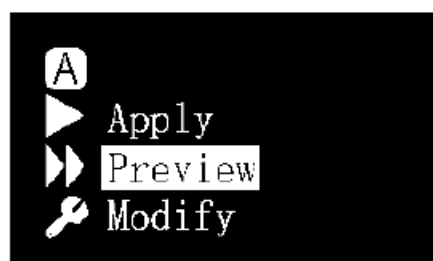
- Press the control dial to switch between the parameters.
- Rotate the control dial to set the parameter.
- Press and hold the control dial for 3s to turn to the next page.

Apply



- Rotate the control dial to select “
- Press the control dial to save the setting.
- Press and hold the control dial for 3s to return to the main menu

Preview

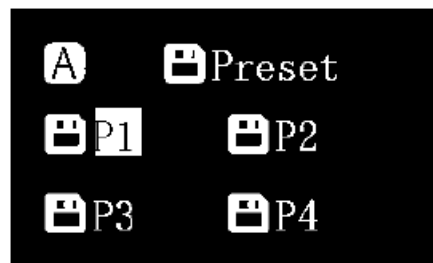


- Rotate the control dial to select “
- Press the control dial to run the program in preview mode , where the entire photoperiod is demonstrated in 3 minutes
- Press and hold the control dial for 3s to return to the main menu



- Rotate the control dial to select “
- Press the control dial to readjust the parameters, see Modify above.

Selecting Preset



- Rotate the control dial to switch between the presets
- Press the control dial to turn to the next page.

Apply



- Rotate the control dial to select “Apply”.
- Press the control dial to save the setting.

Preview



- Rotate the control dial to select “Preview”.
- Press the control dial to runs the program in preview mode , where the entire preset is demonstrated in 3 minutes
- Press and hold the control dial for 3s to return to the main menu

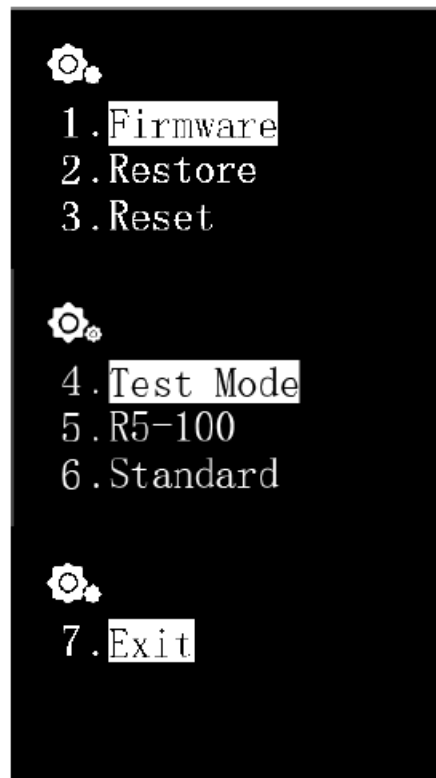


- Rotate the control dial to select “
- Press the control dial to go back to the main menu

Maintenance Instructions

System Setup

- System Setup features a set of functions allowing user to do perform maintenance on the fixture
- To enter the System Setup page, first turn off the fixture, then press and hold the control dial while turning the fixture back on. Keep on holding the control dial until the system setup page is shown on OLED monitor.
- There are 7 functions in the System Setup screen.

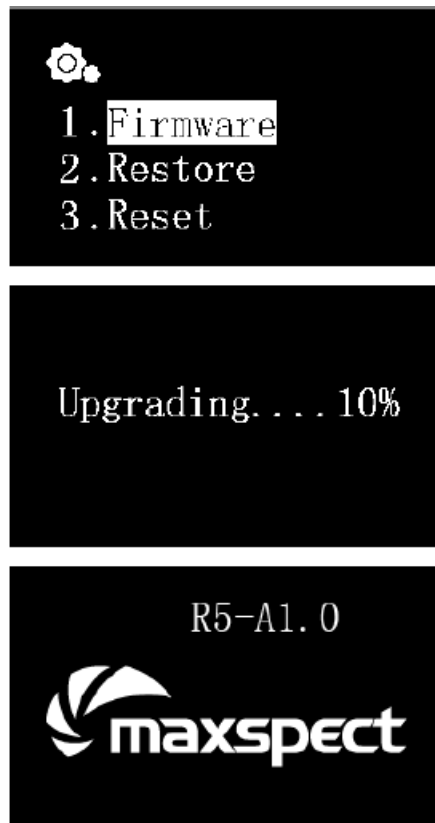


- Firmware
- Restore
- Reset
- Test Mode
- Model Number
- Standard or Master/Slave mode

- Exit

Firmware

This function allows the user to update the firmware.



- Rotate the control dial to select “ Firmware”
- Press the control dial to begin the firmware update
- When there is no T F (micro SD card or invalid firmware in the TF ca r d, “NO TF Card” or “Wrong File” will be shown.
- Otherwise, the firmware update progress will be shown.
- Once the firmware has been updated successfully, the fixture will restart automatically and the new firmware version number will be shown.

Restore

This function allows the user to restore the firmware to its original factory version. After restoring the firmware, the fixture will restart automatically and the firmware version number will be shown



- Rotate the control dial to select “Restore”.
- Press the control dial to restore the firmware

Reset

This function allows the user to reset the fixture back to its factory settings. After finish resetting the fixture, it ll restart automatically.



- Rotate the control dial to select “
- Press the control dial to factory reset the fixture

Test Mode

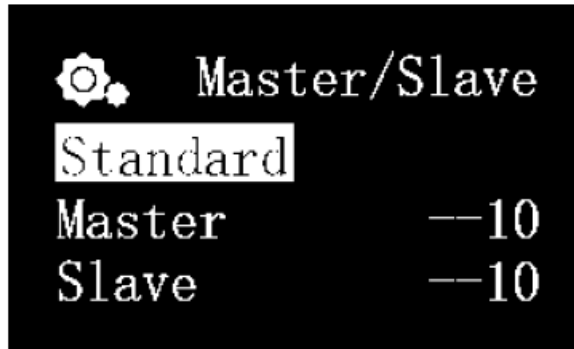
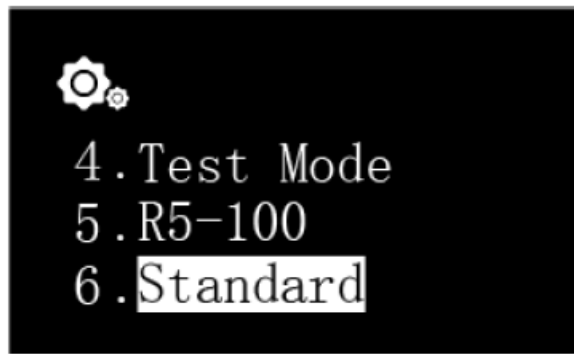
This function allows the user to put the fixture in the test mode, which would help our customer service representative to diagnose the fixture. This should only be done by the users when told by an authorized dealer or customer representative to perform certain test on th e fixture.

Model Number

This function will display the model number of the fixture, which also double serves as the ID name when the RSX is connected to an iOS or Android device through the Syna G system. Under normal circumstances, this value should not be changed.

Standard or Master/Slave Mode

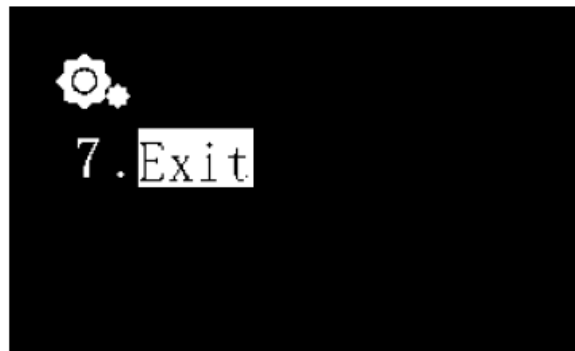
- This function allows the user to choose between the Standard stand-alone operation mode, or Master/Slave mode where multiple units of RSX fixtures can be connected.
- Once connected, all Slave fixtures will follow the settings programmed on the Master fixture, saving time and effort on setting up multiple fixtures.
- The default value is Standard meaning the fixture is running in stand-alone operation mode.
- When an RSX is set as a Master Unit, it will need to assign a channel from 01 to 10. All connecting Slave Units must be also assigned to the same channel.
- In cases where multiple groups of Master/Slave coexist in proximity, each Master Unit must assign a different channel to avoid interference with another group.
 - Rotate the control dial to select “Standard”.



- Press the control dial to enter the settings page.
- Rotate the control dial to assign it as a “Master” or “Slave”
- After selecting the Master/Slave unit, press the control dial to assign a channel.
- Press and hold the control dial for 3s to save the setting.

Exit

Press “Exit” to restart the fixture.



Maintenance of the fixture

User must periodically perform maintenance on the fixture, including but not limited to the following steps:

- Using a damp cloth to clean the acrylic lens to make sure it's not covered by salt creep or other dirt and debris. An uncleaned lens will severely affect the luminous output of the fixture, so for best performance, you should clean the lens once a week.
- Clean the dust and debris trapped in the fan units. Regularly and properly cleaned fans will last much longer than those that aren't. Fan units are wear and tear parts and must be replaced every 24 36 months depending on the frequency of maintenance performed on them.
- Clean / remove any salt creep or dirt and debris that had been built or collected on the aluminum body of the fixture, as they may affect the dissipation of heat from the fixture.

Note: Failure to perform the above-mentioned maintenance on the fixture may cause unnecessary damage to

your fixture and may void your warranty!

Specifications

For latest specifications on LED layout, types and color spectrum, please visit our website at www.maxspect.com



Limited Warranty

Maxspect (Hong Kong) Limited warrants all Maxspect™ RSX LED Lighting System products against defects in workmanship for a period of 12 months from the date of purchase. If a defect exists during the warranty period, Maxspect (Hong Kong) Limited at its option will either repair (using new or remanufactured parts) or replace (with a new or remanufactured unit) the product at no charge.

THE WARRANTY WILL NOT APPLY TO THE PRODUCT IF IT HAS BEEN DAMAGED BY MISUSE, ALTERATION, ACCIDENT, IMPROPER HANDLING OR OPERATION, OR IF UNAUTHORIZED REPAIRS ARE ATTEMPTED OR MADE. SOME EXAMPLES OF DAMAGES NOT COVERED BY WARRANTY INCLUDE BUT ARE NOT LIMITED TO, USING AFTER-MARKET LED BULBS AND MODIFICATION OF THE CIRCUITRY, WHICH ARE PRESUMED TO BE DAMAGES RESULTING FROM MISUSE OR ABUSE.

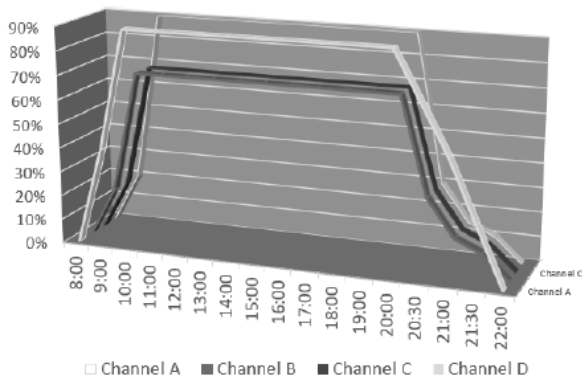
DISCLAIMER OF CONSEQUENTIAL AND INCIDENTAL DAMAGES:

- You and any other user of Maxspect (Hong Kong) Limited products shall not be entitled to any consequential or incidental damages, including without limitation, loss of use of the unit, inconvenience, damage to personal property, phone calls, lost income or earnings. This warranty gives you specific legal rights and you may also have other rights, which vary from state to state.
- MAXSPECT LTD. MAKES NO WARRANTY OR REPRESENTATION, EITHER EXPRESS OR IMPLIED, CONCERNING THE PRODUCT'S QUALITY, PERFORMANCE, MERCHANTABILITY, OR FITNESS FOR A PARTICULAR PURPOSE. AS A RESULT, THIS PRODUCT, IS SOLD "AS IS," AND YOU THE PURCHASER ASSUME THE ENTIRE RISK AS TO ITS QUALITY AND PERFORMANCE.
IN NO EVENT WILL MAXSPECT LTD BE LIABLE FOR DIRECT, INDIRECT, SPECIAL, INCIDENTAL, OR CONSEQUENTIAL DAMAGES RESULTING FROM ANY DEFECT IN THE PRODUCT OR ITS DOCUMENTATION.
- The warranty, disclaimer, and remedies set forth above are exclusive and replace all others, oral or written, expressed or implied. At no time will any Maxspect (Hong Kong) Limited dealers, agents, or employees be authorized to make any modifications, extensions, or additions to this warranty?
- Some states do not allow the exclusion or limitation of implied warranties or liability for incidental or consequential damages, so the above limitation or exclusion may not apply to you.

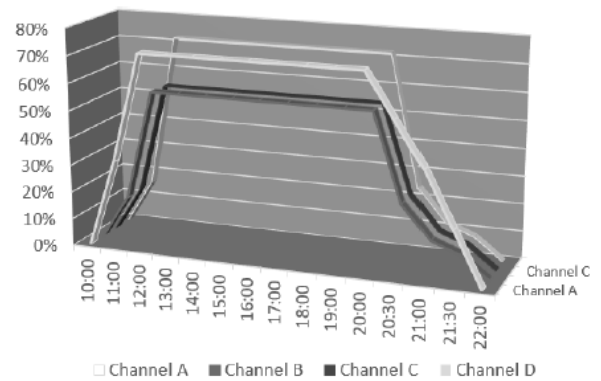
Preset

R5 series

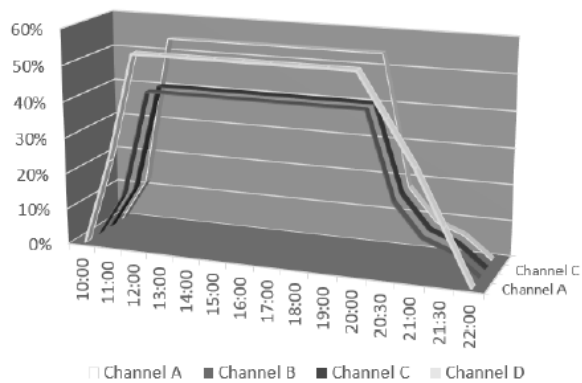
Preset 1



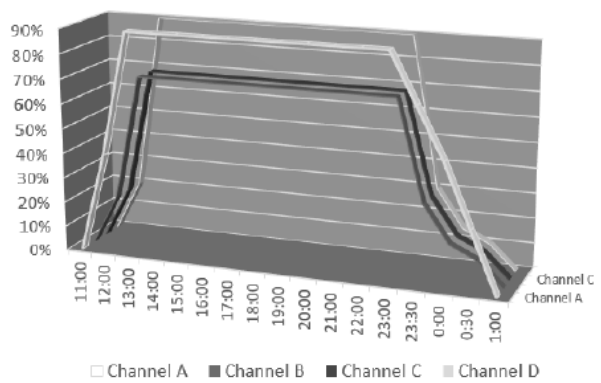
Preset 2



Preset 3

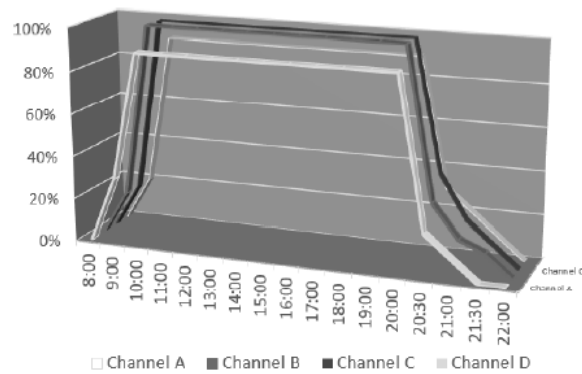


Preset 4

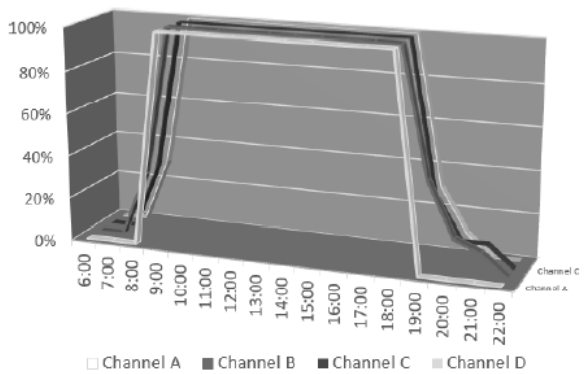


R5F series

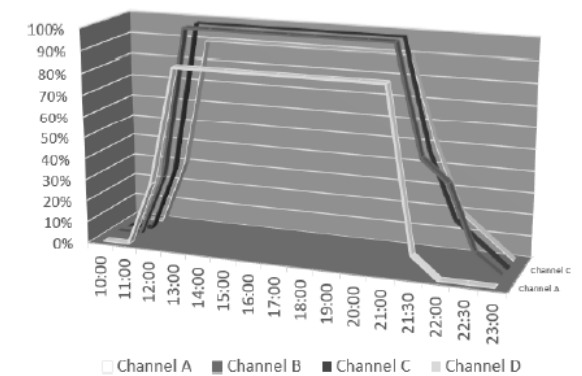
Preset 1



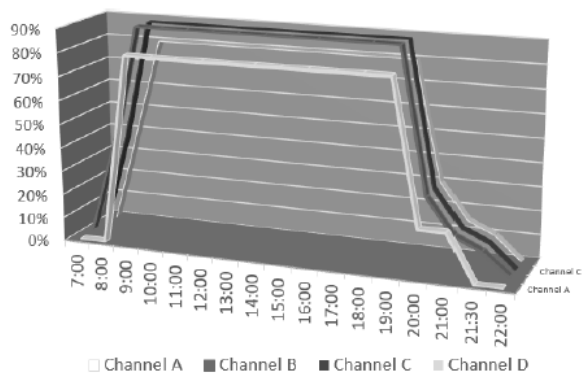
Preset 2



Preset 3




Preset 4



- Products, packaging, features and specifications are subject to change without notice. All screen images are simulated.
- © 2009-2024 Maxspect Limited. Reproduction in whole or in part without written permission is prohibited.
- All rights reserved. Maxspect is a trademark of Maxspect Limited

Documents / Resources

	<p>maxspect R5(F)-50 RSX LED Lighting System [pdf] Owner's Manual R5 F -50, R5 F -100, R5 F -150, R5 F -200, R5 F -300, R5 F -50 RSX LED Lighting System, R5 F -50, RSX LED Lighting System, Lighting System, System</p>
---	---

References

- [m Home - Maxspect](#)
- [m Home - Maxspect](#)
- [User Manual](#)

Manuals+, [Privacy Policy](#)

This website is an independent publication and is neither affiliated with nor endorsed by any of the trademark owners. The "Bluetooth®" word mark and logos are registered trademarks owned by Bluetooth SIG, Inc. The "Wi-Fi®" word mark and logos are registered trademarks owned by the Wi-Fi Alliance. Any use of these marks on this website does not imply any affiliation with or endorsement.