


MaxMate SS2J35238MX 3.5 Oval Nerf Bar Side Steps



MaxMate SS2J35238MX 3.5 Oval Nerf Bar Side Steps Instruction Manual

[Home](#) » [MaxMate](#) » MaxMate SS2J35238MX 3.5 Oval Nerf Bar Side Steps Instruction Manual 

Contents

- [1 MaxMate SS2J35238MX 3.5 Oval Nerf Bar Side Steps](#)
- [2 Product Information](#)
- [3 Product Usage Instructions](#)
- [4 FAQs](#)
- [5 BEFORE INSTALLATION](#)
- [6 TORQUE VALUES](#)
- [7 Bottom View](#)
- [8 INSTALLATION STEPS](#)
- [9 Documents / Resources](#)
 - [9.1 References](#)



MaxMate SS2J35238MX 3.5 Oval Nerf Bar Side Steps



Product Information

- **Specifications**

- **Model:** SS2J35238MX
- **Material:** Steel
- **Fastener Sizes and Torque Values:**
 - **6mm Class 8.8 Torque:** 6-7 ft-lbs
 - **8mm Class 8.8 Torque:** 15-16 ft-lbs
 - **10mm Class 8.8 Torque:** 31-32 ft-lbs
 - **12mm Class 8.8 Torque:** 54-55 ft-lbs
 - **14mm Class 8.8 Torque:** 87-88 ft-lbs
 - **6mm Class 10.9 Torque:** 6-7 ft-lbs
 - **8mm Class 10.9 Torque:** 22-23 ft-lbs
 - **10mm Class 10.9 Torque:** 44-45 ft-lbs
 - **12mm Class 10.9 Torque:** 78-79 ft-lbs
 - **14mm Class 10.9 Torque:** 125-126 ft-lbs

Product Usage Instructions

- **Before Installation**

- Read all instructions carefully before starting the installation process.
- Verify all parts are present by removing contents from the box.
- Failure to identify any damage before installation could lead to a rejection of any claim.

- If any parts are missing or damaged, take a photo for claim purposes and contact support@maxmatedepot.com.

• Step-by-Step Installation

◦ Step 1 – Preparation

- Remove contents from the box, verify all parts are present, and carefully read the instructions. Remove any factory-installed or aftermarket product that may interfere with the installation.

◦ Step 2 – Starting Installation

- Begin the installation process towards the front of the Passenger/Right side of the vehicle as shown in Fig 1.

◦ Step 3 – Bracket Identification

- Identify the different mounting brackets:
- The Front Mounting Bracket has an angled back.
- The Center Mounting Bracket has a rounded back.
- The Rear Mounting Bracket has a rounded mounting tab and a shorter bottom section.

◦ Step 4 – Vehicle Check

- Determine if the vehicle is equipped with threaded mounting inserts. For vehicles without threaded inserts:
- Insert a 10mm Nut Plate into the large square opening in the floor panel.
- Line up the threaded nut with the hole in between the pair of holes on the pinch weld.

FAQs

• Q: What should I do if I find missing parts or damage during installation?

- **A:** If you find any missing parts or damage before or during installation, take a photo for claim purposes and contact support@maxmatedepot.com for assistance.

BEFORE INSTALLATION

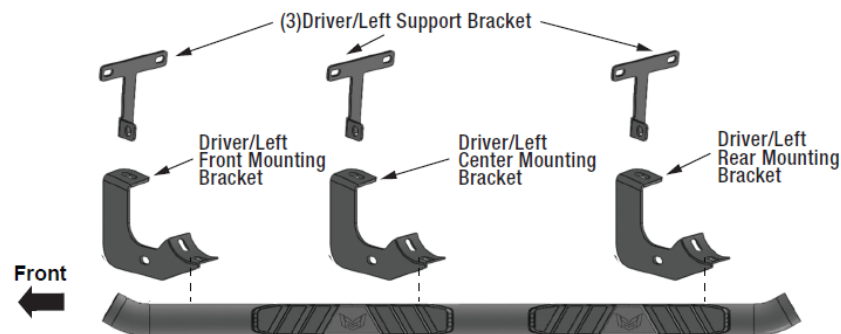
- BEFORE INSTALLATION READ THE INSTRUCTIONS CAREFULLY BEFORE STARTING INSTALLATION.
- REMOVE CONTENTS FROM THE BOX AND VERIFY ALL PARTS ARE PRESENT.
- FAILURE TO IDENTIFY DAMAGE BEFORE INSTALLATION COULD LEAD TO A REJECTION OF ANY CLAIM.
- IF MISSING PARTS OR ANY DAMAGE ARE FOUND, PLEASE TAKE A PHOTO TO FILE A CLAIM.
- TO FILE YOUR CLAIM, PLEASE EMAIL SUPPORT@MAXMATEDEPOT.COM.

TORQUE VALUES

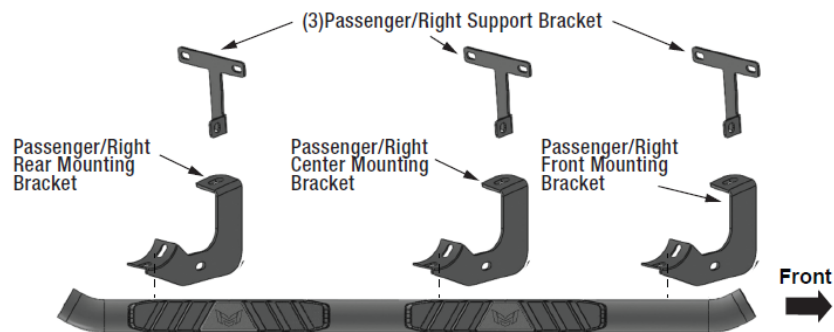
Fastener Size	Class 8.8 Torque (ft-lbs)	Class 10.9 Torque (ft-lbs)
6mm	6-7	6-7
8mm	15-16	22-23
10mm	31-32	44-45
12mm	54-55	78-79
14mm	87-88	125-126

- **x1** Driver/Left Sidebar
- **x1** Passenger/Right Sidebar
- **x1** Driver/Left Front Mounting Bracket
- **x1** Passenger/Right Front Mounting Bracket
- **x1** Driver/Left Center Mounting Bracket
- **x1** Passenger/Right Center Mounting Bracket
- **x1** Driver/Left Rear Mounting Bracket
- **x1** Passenger/Right Rear Mounting Bracket
- **x1** Driver/Left Support Brackets
- **x3** Passenger/Right Support Brackets
- **x6** 10-1.5mm x 35mm Hex Bolts
- **x6** 10-1.5mm x 30mm Hex Bolts
- **x18** 10mm x 30mm OD x 2.5mm Flat Washers
- **x12** 10mm Lock Washers Passenger/Right Front Mounting Bracket
- **x6** 10mm Hex Nuts
- **x6** 10mm Nut Plates
- **x6** 8-1.25mm x 35mm Hex Bolts
- **x12** 8-1.25mm x 25mm Combo Hex Bolts
- **x6** 8mm Lock Washers
- **x6** 8mm x 28mm OD x 3mm Flat Washers
- **x12** 6-1.0mm x 25mm Hex Bolts
- **x24** 6mm x 22mm x 2mm Flat Washers
- **x12** 6mm Nylon Lock Nuts

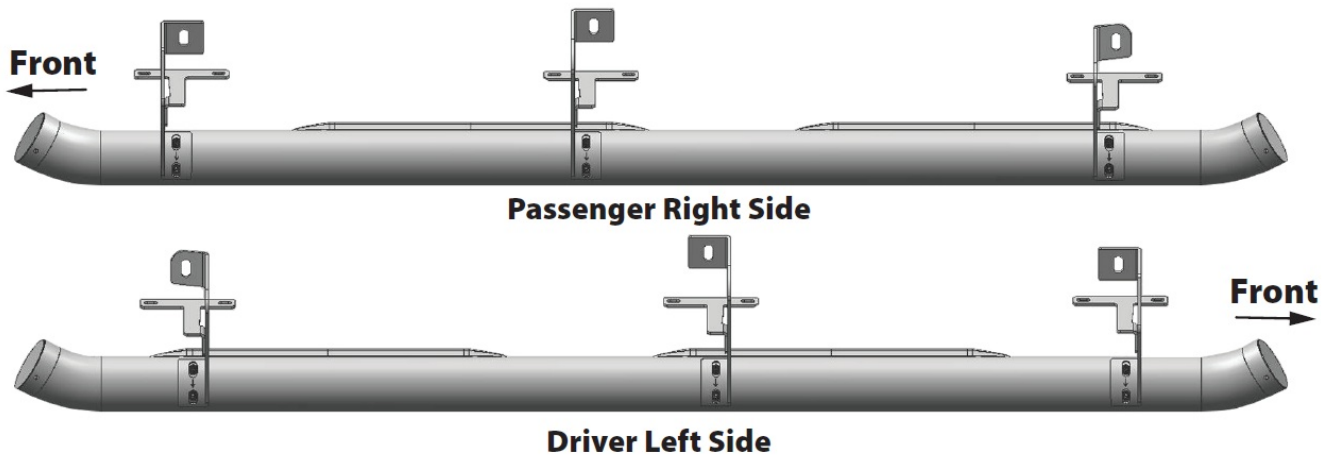
Driver Left Side



Passenger Right Side



Bottom View



INSTALLATION STEPS

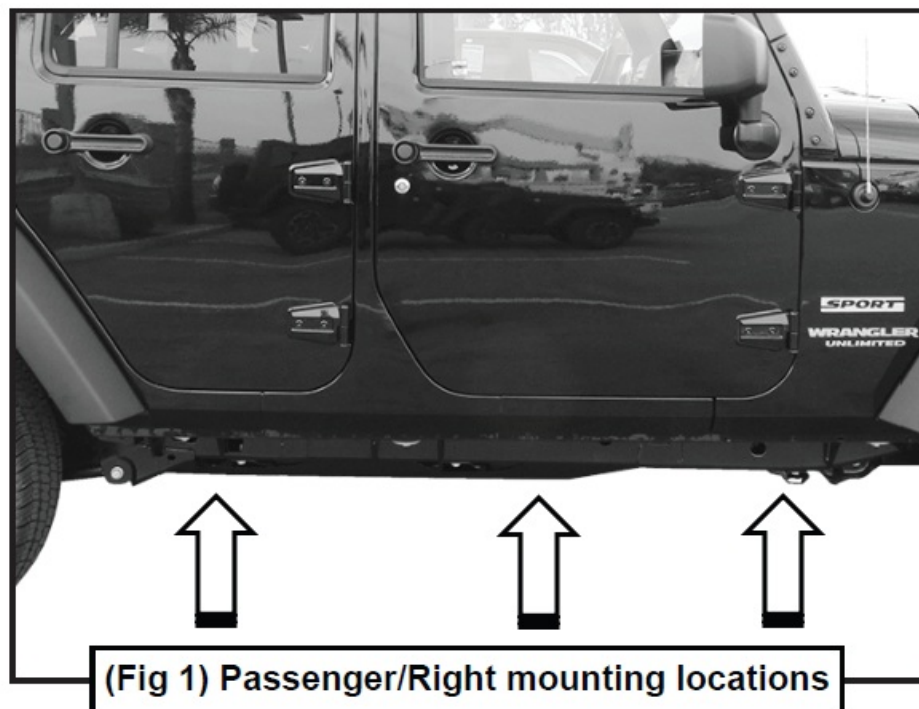
• STEP 1

- REMOVE CONTENTS FROM THE BOX. VERIFY ALL PARTS ARE PRESENT. READ INSTRUCTIONS CAREFULLY. FACTORY-INSTALLED OR AFTERMARKET PRODUCT MUST BE REMOVED.

• STEP 2

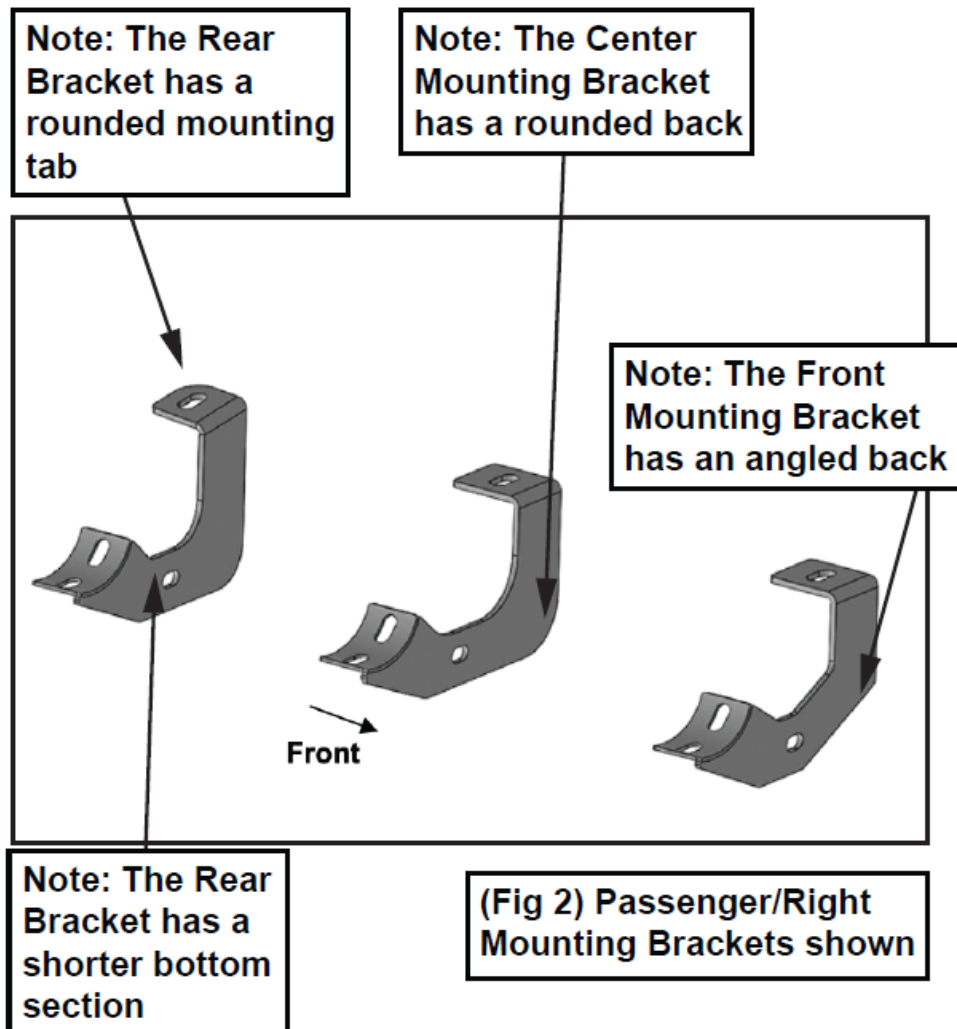
- Start installation toward the front of the Passenger/Right side of the vehicle (Fig 1).

Passenger/Right Side Installation Pictured



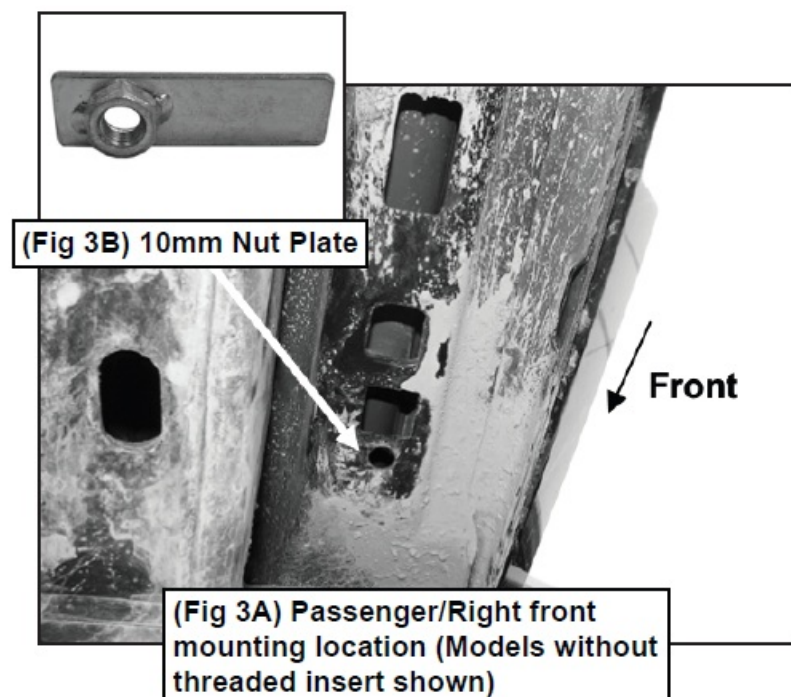
• STEP 3

- **IMPORTANT:** The Mounting Brackets look similar but are all unique. The Front Mounting Bracket has an angled back. The Center Mounting Bracket has a rounded back. The Rear Mounting Bracket has a rounded mounting tab and a shorter bottom section (Fig 2).



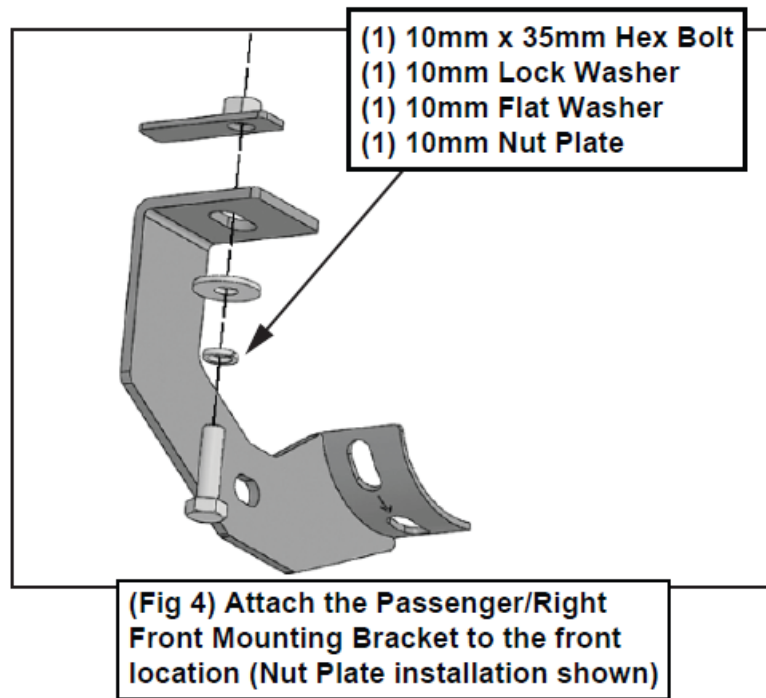
• STEP 4

- Determine if the vehicle is equipped with threaded mounting inserts
- **Vehicles without threaded inserts:**
 - **a.** Insert (1) 10mm Nut Plate into the large square opening in the floor panel. Line up the threaded nut with the hole in between the pair of holes on the pinch weld (Figs 3A & 3B).



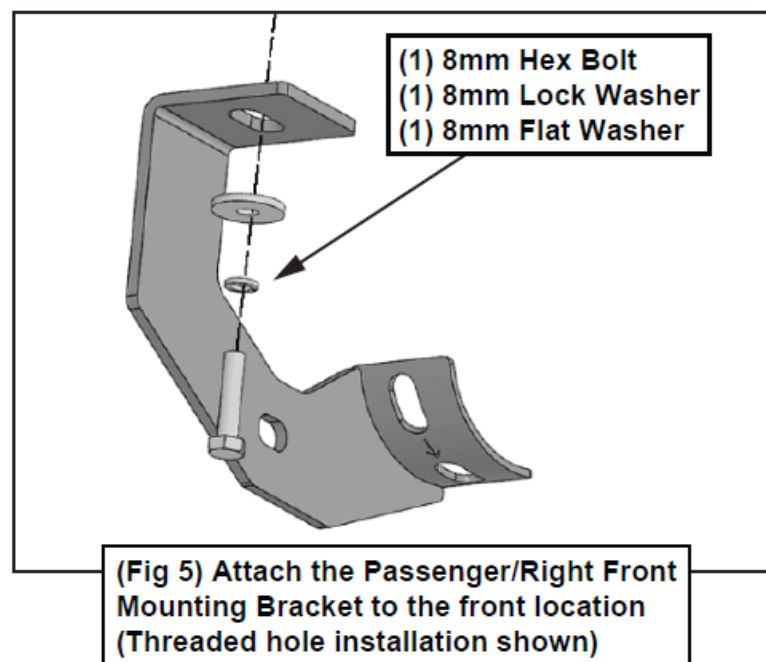
- **b.** Select the Passenger/Right Front Mounting Bracket.

- **c.** Attach the Bracket to the Nut Plate with (1) 10mm Hex Bolt, (1) 10mm Lock Washer and (1) 10mm Flat Washer (Fig 4). DO NOT tighten hardware.



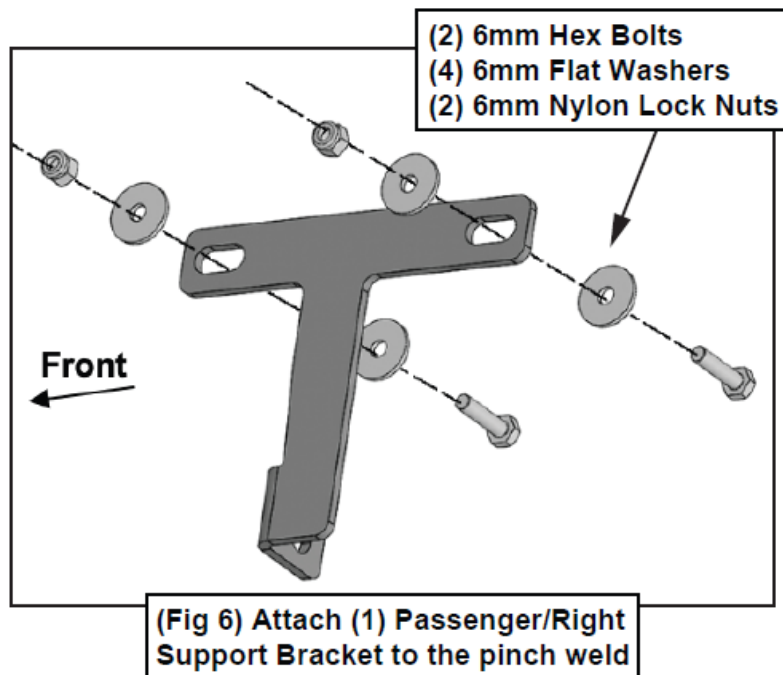
- **Vehicles with factory threaded holes in floor panels:**

- **a.** Locate the front, centre and rear mounting locations (Fig 1)
- **b.** Select the Passenger/Right Front Mounting Bracket.
- **c.** Attach the Bracket to the front mounting location with (1) 8mm Hex Bolt, (1) 8mm Lock Washer and (1) 8mm Flat Washer (Fig 5). DO NOT tighten the hardware.



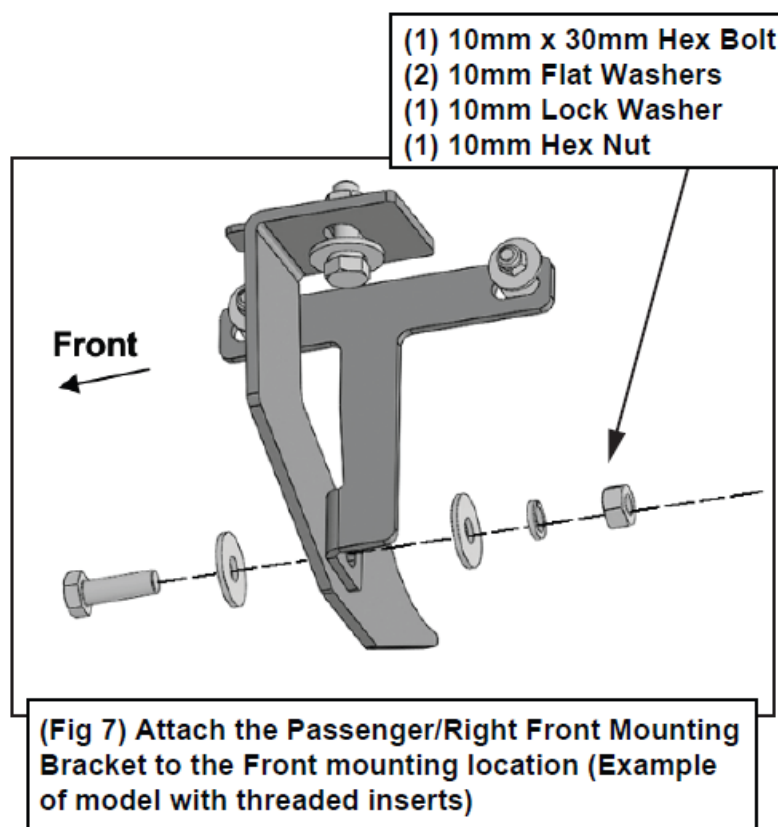
- **STEP 5**

- Select (1) Passenger/Right Support Bracket. Attach the Bracket to the pinch weld with (2) 6mm Hex Bolts, (4) 6mm Flat Washers and (2) 6mm Nylon Lock Nuts (Fig 6). DO NOT tighten the hardware.



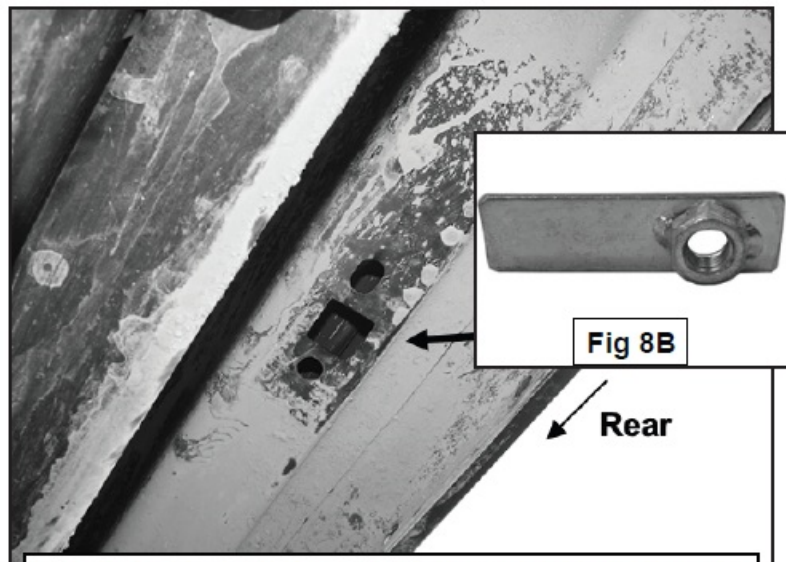
◦ **STEP 6**

- Attach the Support Bracket to the Mounting Bracket with (1) 10mm x 30mm Hex Bolt, (2) 10mm Flat Washers, (1) 10mm Lock Washer and (1) 10mm Hex Nut (Fig 7). DO NOT tighten the hardware.

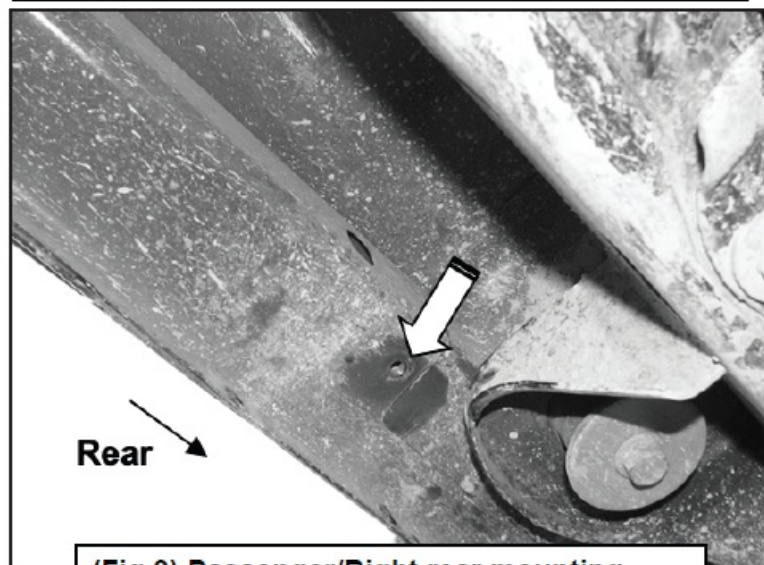


◦ **STEP 7**

- Repeat STEPS 3-6 to attach the Bracket assemblies to the centre and rear locations (Figs 8A, 8B & 9). DO NOT tighten the hardware.



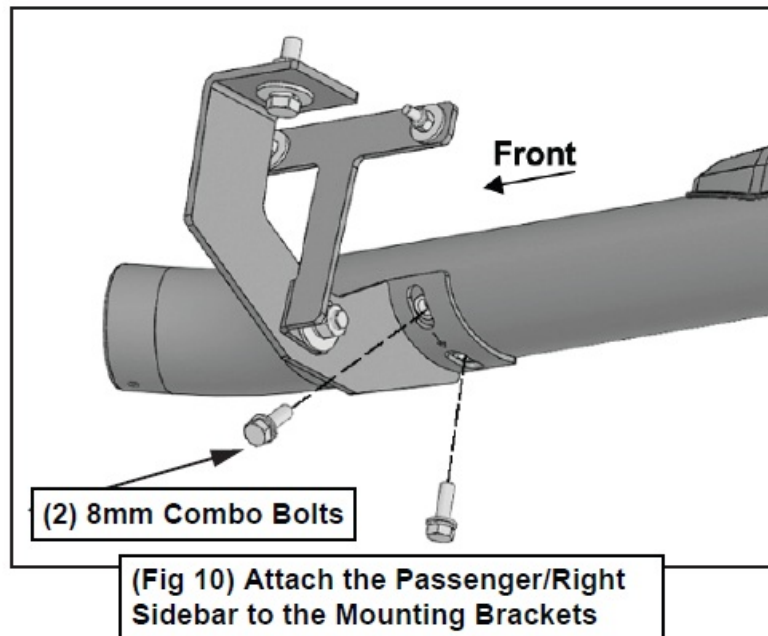
(Fig 8A) Passenger/Right center mounting location
(Model without threaded insert shown)



(Fig 9) Passenger/Right rear mounting location
(Model with threaded inset shown)

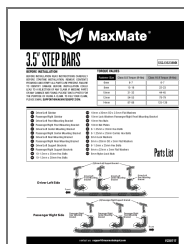
• STEP 8

- Select the Passenger/Right Sidebar. Carefully place the Sidebar on the brackets.
- **IMPORTANT:** DO NOT slide or rotate the Sidebar on cradles, or damage to the finish may result. Attach the Sidebar to the Mounting Brackets with (6) 8mm Combo Bolts (Fig 10). DO NOT tighten the hardware.



- **STEP 9**
 - Level and adjust the Sidebar and tighten all hardware.
- **STEP 10**
 - Move to the driver/left side of the vehicle. Repeat STEPS 1-9 for driver/left Sidebar installation.
- **STEP 11**
 - Do periodic inspections of the installation to make sure that all hardware is secure and tight.
 - **contact us:** support@maxmatedepot.com.

Documents / Resources



[MaxMate SS2J35238MX 3.5 Oval Nerf Bar Side Steps](#) [pdf] Instruction Manual
SS2J35238MX 3.5 Oval Nerf Bar Side Steps, SS2J35238MX, 3.5 Oval Nerf Bar Side Steps, Nerf Bar Side Steps, Bar Side Steps, Side Steps

References

- [User Manual](#)

[Manuals+](#). [Privacy Policy](#)

This website is an independent publication and is neither affiliated with nor endorsed by any of the trademark owners. The "Bluetooth®" word mark and logos are registered trademarks owned by Bluetooth SIG, Inc. The "Wi-Fi®" word mark and logos are registered trademarks owned by the Wi-Fi Alliance. Any use of these marks on this website does not imply any affiliation with or endorsement.