



# MaxMate LD3C71018MX Triangular Drop Steps Instruction Manual

[Home](#) » [MaxMate](#) » MaxMate LD3C71018MX Triangular Drop Steps Instruction Manual 



## Contents

- [1 BEFORE INSTALLATION](#)
- [2 TORQUE VALUES](#)
- [3 Part List](#)
- [4 Documents / Resources](#)
  - [4.1 References](#)

## BEFORE INSTALLATION

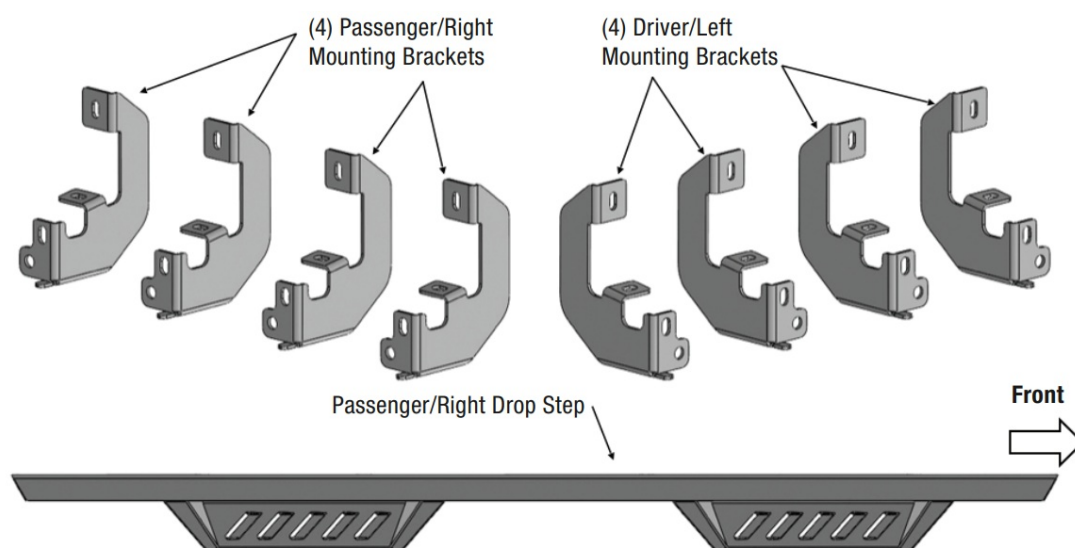
BEFORE INSTALLATION READ INSTRUCTIONS CAREFULLY BEFORE STARTING INSTALLATION. REMOVE CONTENTS FROM BOX AND VERIFY ALL PARTS ARE PRESENT. FAILURE TO IDENTIFY DAMAGE BEFORE INSTALLATION COULD LEAD TO A REJECTION OF ANY CLAIM. IF MISSING PARTS OR ANY DAMAGE ARE FOUND, PLEASE TAKE A PHOTO FOR THE PURPOSE OF FILING A CLAIM. TO FILE YOUR CLAIM, PLEASE EMAIL [SUPPORT@MAXMATEDEPOT.COM](mailto:SUPPORT@MAXMATEDEPOT.COM).

## TORQUE VALUES

6mm	7-Jun	Class 10.9 Torque (ft-lbs)
8mm	15-16	125-126
10mm	31-32	7-Jun
12mm	54-55	22-23
14mm	87-88	44-45
Fastener Size	Class 8.8 Torque (ft-lbs)	78-79

x1 Driver/Left Drop Step  
 x1 Passenger/Right Drop Step  
 x4 Driver/Left Mounting Brackets  
 x4 Passenger/Right Mounting Brackets  
 x16 8mm x 30mm Hex Bolts  
 x16 8mm x 25mm Combo Bolts  
 x16 8mm Lock Washers  
 x16 8mm x 24mm OD x 2mm Flat Washers

## Part List



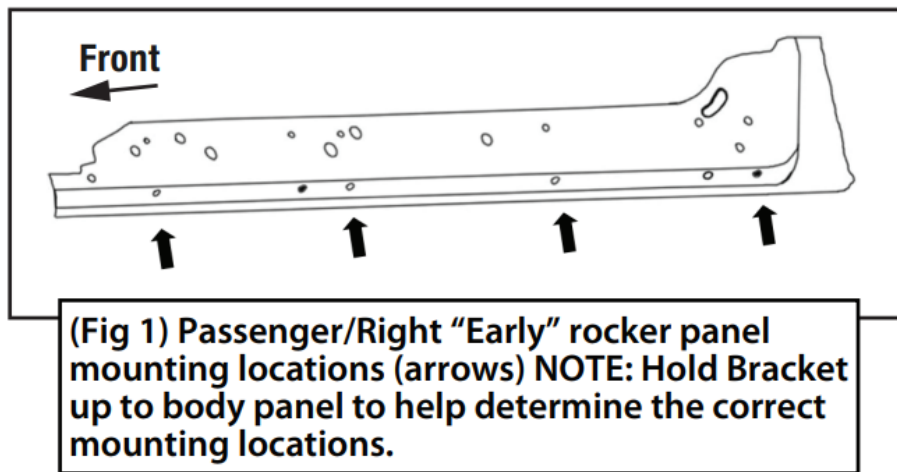
## PROCEDURE:

REMOVE CONTENTS FROM BOX. VERIFY ALL PARTS ARE PRESENT.  
 READ INSTRUCTIONS CAREFULLY. ASSISTANCE IS RECOMMENDED.

### STEP 1

Start the installation under the Passenger/Right side of the vehicle.

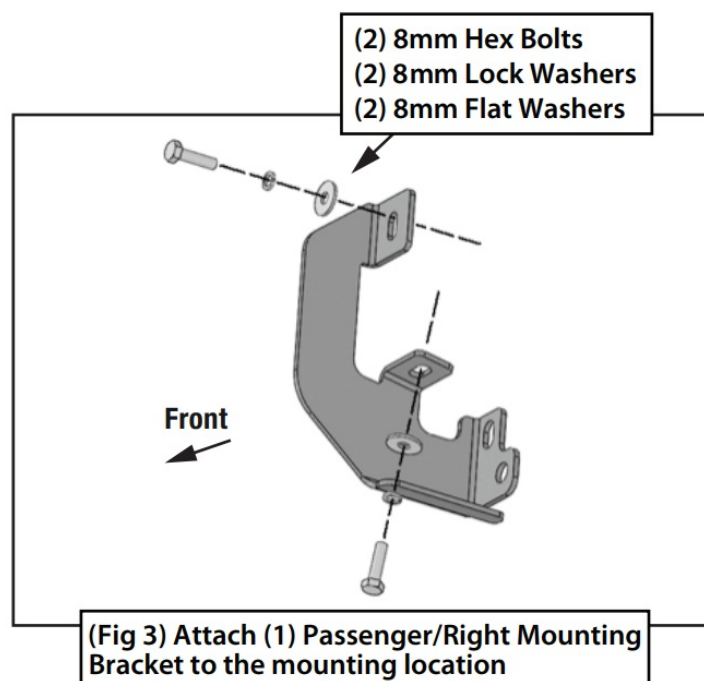
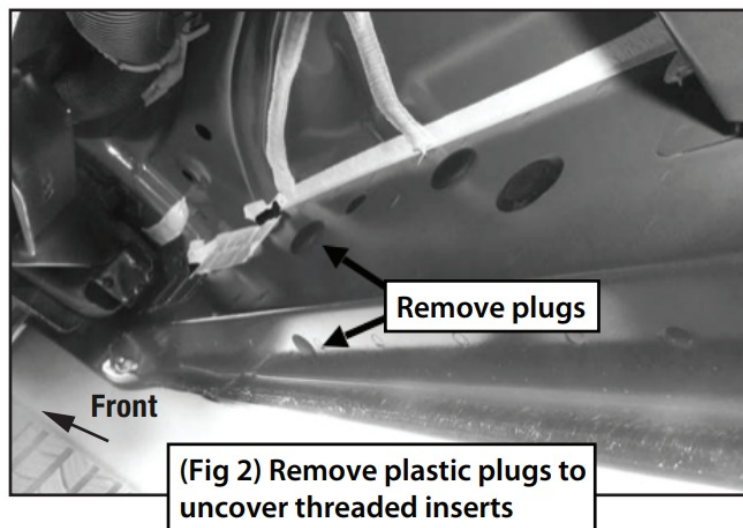
a. For "Early" 2019 models, locate the 6 plugs along the bottom edge of the body. Mounting Brackets will bolt to the 1st, 3rd, 4th and 6th threaded mounting holes (Fig 1). Passenger/Right side Installation Pictured



b. For "Late" 2019 models, all (4) mounting locations will be used.

## STEP 2

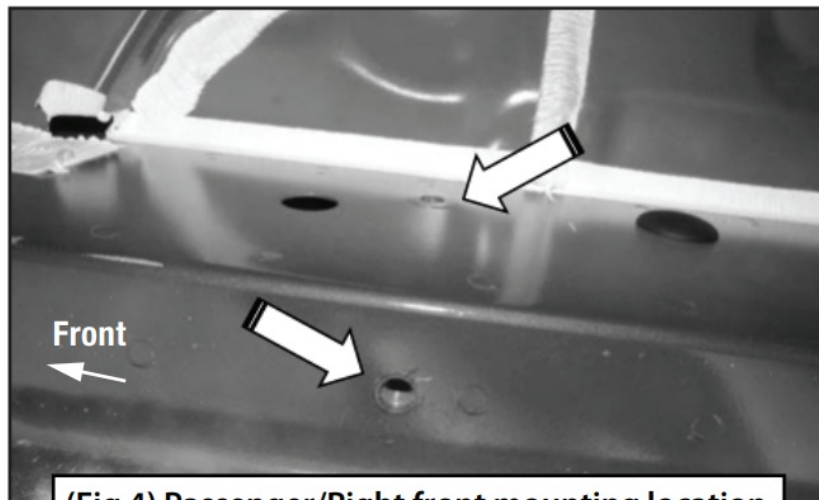
Remove the plastic plugs from the passenger/right front mounting location. Select (1) Mounting Bracket. Attach the Mounting Bracket to the factory threaded holes with (2) 8mm Hex Bolts, (2) 8mm Lock Washers and (2) 8mm Flat Washers (Figs 2 & 3). DO NOT tighten hardware.



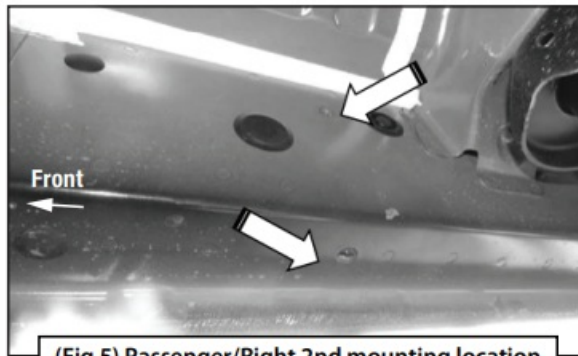
## STEP 3

Repeat STEPS 1 & 2 to attach (3) Mounting Brackets to the (3) remaining locations along the rocker panel (Figs 4-7). DO NOT tighten hardware.

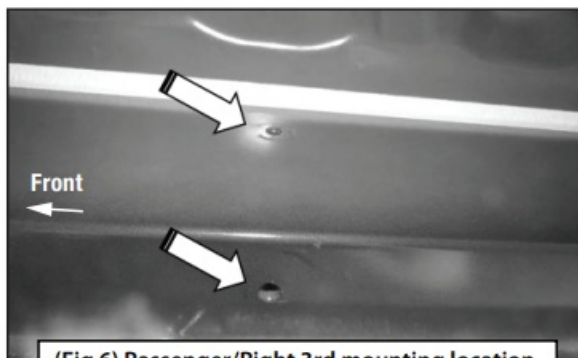
Passenger/Right side Installation Pictured



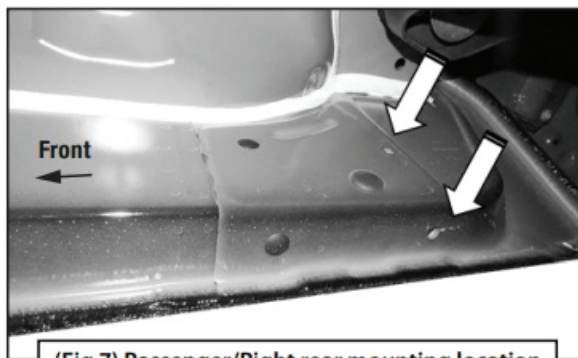
(Fig 4) Passenger/Right front mounting location



(Fig 5) Passenger/Right 2nd mounting location



(Fig 6) Passenger/Right 3rd mounting location

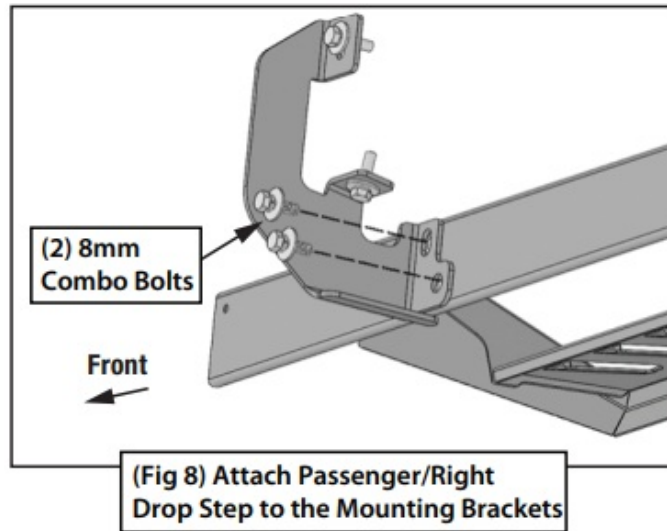


(Fig 7) Passenger/Right rear mounting location

#### STEP 4

Select the Passenger/Right Drop Step. Attach the Drop Step to the (4) Mounting Brackets with (8) 8mm Combo Bolts (Fig 8). DO NOT tighten hardware.

Passenger/Right side Installation Pictured



#### STEP 5

Level and adjust the Drop Step, then fully tighten all hardware.

#### STEP 6

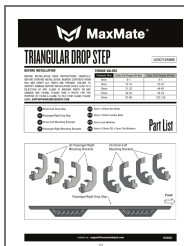
Repeat STEPS 1-5 to attach the Driver/Left Drop Step.

#### STEP 7

Do periodic inspections to the installation to make sure that all hardware is secure and tight.

contact us: [support@maxmatedepot.com](mailto:support@maxmatedepot.com)

## Documents / Resources



[MaxMate LD3C71018MX Triangular Drop Steps](#) [pdf] Instruction Manual  
LD3C71018MX Triangular Drop Steps, LD3C71018MX, Triangular Drop Steps, Drop Steps

## References

- [User Manual](#)

[Manuals+](#), [Privacy Policy](#)

This website is an independent publication and is neither affiliated with nor endorsed by any of the trademark owners. The "Bluetooth®" word mark and logos are registered trademarks owned by Bluetooth SIG, Inc. The "Wi-Fi®" word mark and logos are registered trademarks owned by the Wi-Fi Alliance. Any use of these marks on this website does not imply any affiliation with or endorsement.