


maxima MSB280W Stick Blender



maxima MSB280W Stick Blender User Manual

[Home](#) » [maxima](#) » maxima MSB280W Stick Blender User Manual 

Contents

- 1 maxima MSB280W Stick Blender
- 2 Introduction
- 3 Specifications
- 4 ACCESSORIES
- 5 General Safety Guidelines
- 6 Product Specific Safety Guidelines
- 7 First Time Use
- 8 Installation
- 9 Operation
- 10 ASSEMBLY & DISASSEMBLY
- 11 Troubleshooting
- 12 Cleaning and Maintenance
- 13 Guarantee
- 14 CIRCUIT DIAGRAM
- 15 EXPLODED VIEW
- 16 Documents / Resources
 - 16.1 References



maxima MSB280W Stick Blender



MAXIMA STICK BLENDER

BEFORE USING THIS PRODUCT YOU SHOULD READ THIS USER MANUAL PROPERLY

MAXIMA – NIJVERHEIDinSfWoE@G 2ma3 Axi/maD – 3ho6ll4an1 Rd.cP Mo lmJD-RwEwCw.HmT – TaxiHmE
NahoETIIHaEndR.LcAoNmDS –
+31 (0) 297 253 969

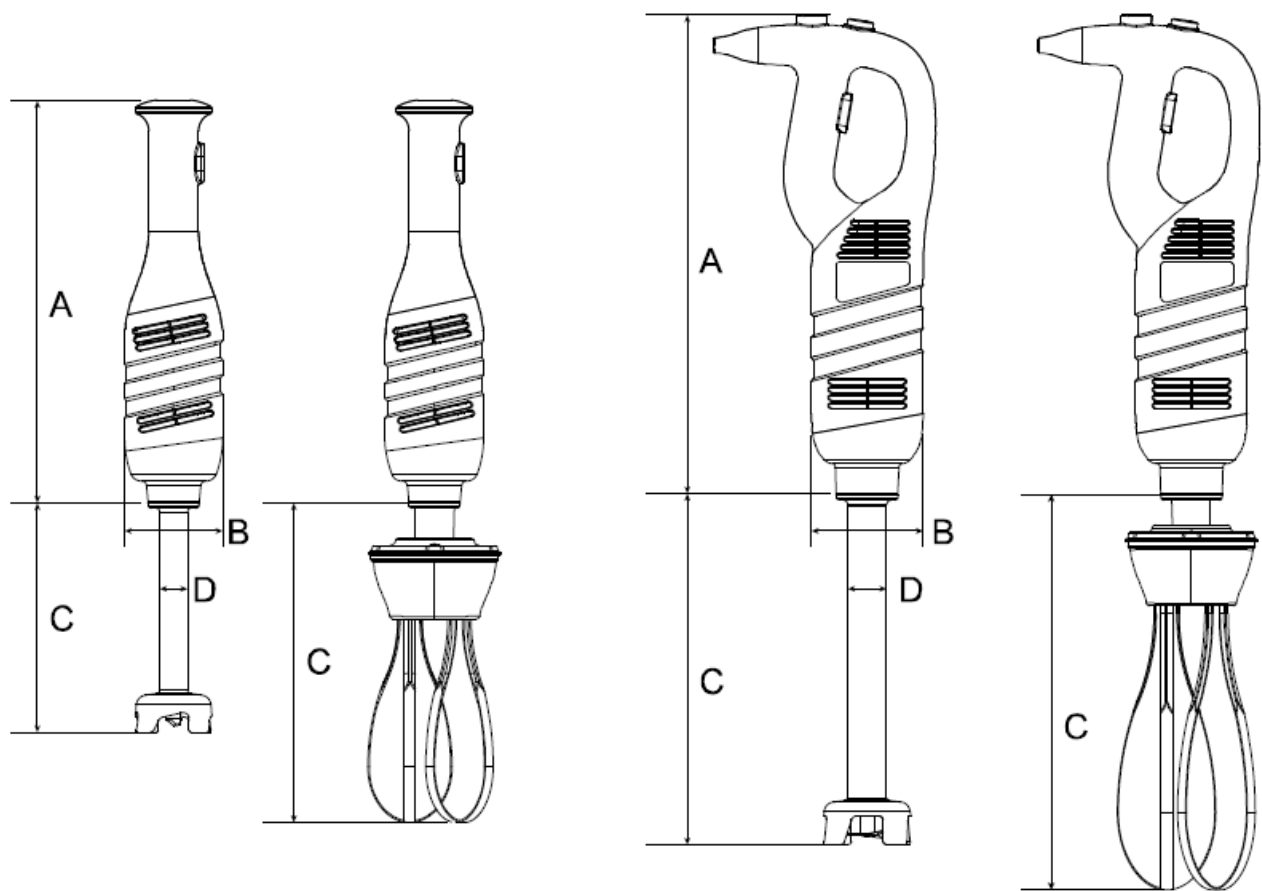
WWW.MAXIMA.COM

INFO@MAXIMA.COM

Introduction

- Thank you for purchasing this Maxima product. To ensure optimal and safe use, please read these instructions completely before attempting to install or use this product
- All Maxima products are manufactured with great care and are CE certified. As a result, our products meet the legal requirements within the European Union with regard to safety, health and the environment. In addition, our products are tested and inspected prior to shipment to ensure product quality and safety.
- At Maxima we are very proud of our products and are completely committed to providing you with the best products and service possible. Your satisfaction is our number one priority .
- We trust you will enjoy using this product and Thank You for choosing Maxima Kitchen Equipment as your supplier. We hope you will consider Maxima for your future purchases.

Specifications



PRODUCT		MAXIMA STICK BLENDER (MSB)						
Model	Product Code	Power Supply	Power	Speed (RPM)	Net Weight (body)	Length (A)	Diameter Ø (B)	Length (C)
MSB 280W-1 98MM	08410000	230 V / 50 Hz 1 Phase	280 W	6000 – 20000	1.78 kg	363 mm	88 mm	198 mm
MSB 450W-2 10MM	08410100	230 V / 50 Hz 1 Phase	450 W	16000	2.55 kg	433 mm	100 mm	210 mm
MSB 450W-2 60MM	08410105	230 V / 50 Hz 1 Phase	450 W	8000 – 16000	2.55 kg	433 mm	100 mm	260 mm
MSB 650W-3 10MM	08410110	230 V / 50 Hz 1 Phase	650 W	18000	3.27 kg	434mm	120 mm	310 mm
MSB 650W-4 10MM	08410115	230 V / 50 Hz 1 Phase	650 W	8000 – 18000	3.27 kg	434mm	120 mm	410 mm
MSB 850W-4 60MM	08410120	230 V / 50 Hz 1 Phase	850 W	18000	3.52 kg	434mm	120 mm	460 mm
MSB 850W-5 10MM	08410125	230 V / 50 Hz 1 Phase	850 W	8000 – 18000	3.52 kg	434mm	120 mm	510 mm

NOTE: The above specifications do not include any attachments. In the chart below you will find the available attachments per machines.

ACCESSORIES

Model	Product Code	Net Weight	Length (C)	Diameter Ø (D)	Compatible with machine
FOOT 198MM	08410010	0.49 kg	198 mm	Ø 70mm	08410000
WHISK 185MM	08410020	0.81 kg	185 mm	n/a	08410000
WHISK 250MM	08410240	0.92 kg	250 mm	n/a	
FOOT 160MM	08410200	0.67 kg	160 mm	Ø 80 mm	
FOOT 210MM	08410205	0.78 kg	210 mm	Ø 80 mm	
					08410100
FOOT 260MM	08410210	1.01 kg	260 mm	Ø 80 mm	08410105 08410110
FOOT 310MM	08410215	1.15 kg	310 mm	Ø 80 mm	08410115 08410120
					08410125
FOOT 360MM	08410220	1.26 kg	360 mm	Ø 80 mm	
FOOT 410MM	08410225	1.41 kg	410 mm	Ø 80 mm	
FOOT 460MM	08410230	1.54 kg	460 mm	Ø 80 mm	
					08410110
FOOT 510MM	08410235	1.68 kg	510 mm	Ø 80 mm	08410115 08410120
					08410125

General Safety Guidelines

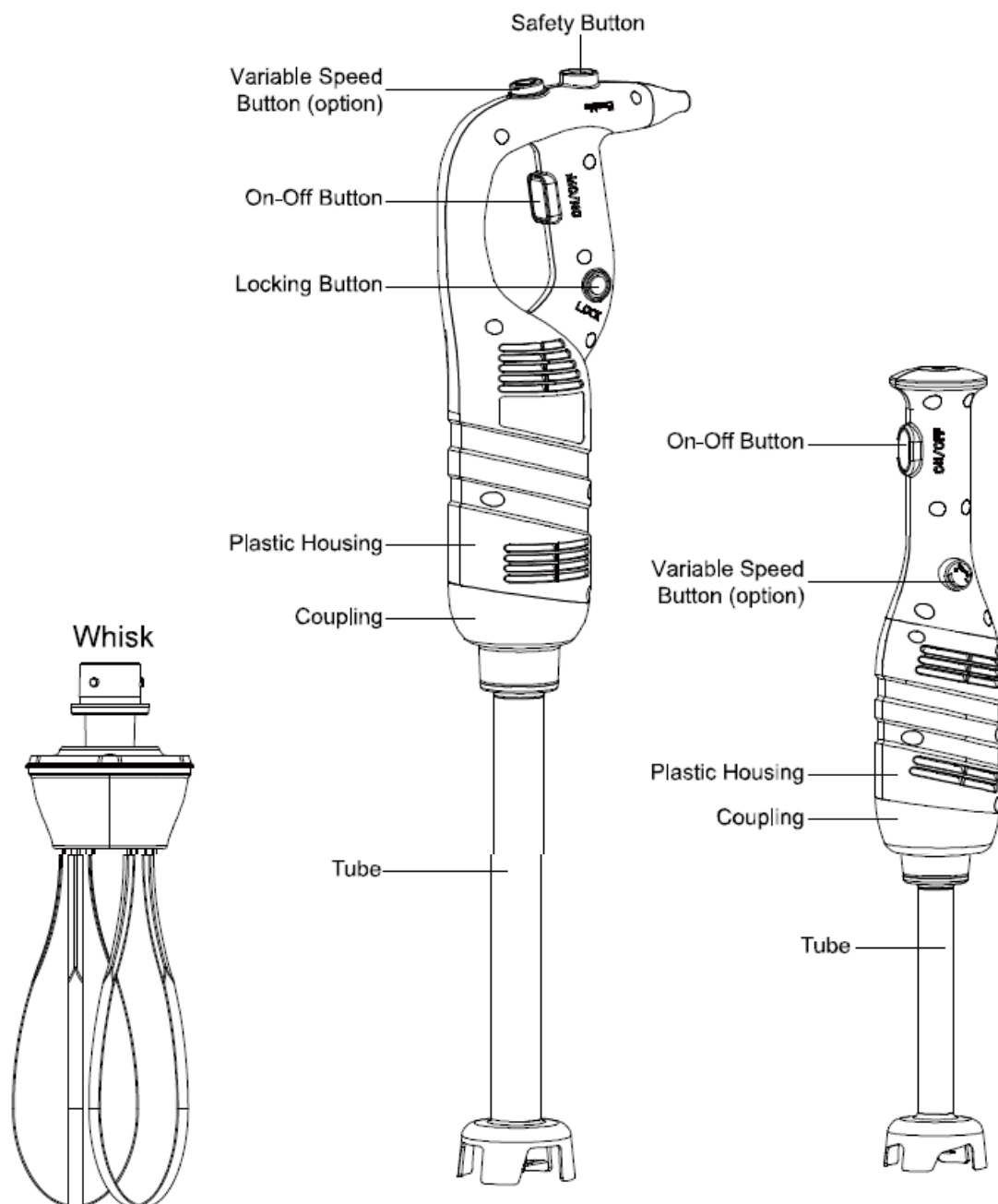
This machine may only be used for the purpose for which it was designed and intended. The manufacturer and supplier are not liable for any damage caused by incorrect operation and improper use.

- This is a commercial product and must only be used by a trained professional who has read and fully understands this manual. It must not be used (without supervision) by children or persons with reduced physical, sensory or mental capabilities.
- This device is intended for indoor use only.

- **WARNING!** Keep the machine body and electrical plug away from water and other liquids. If either is exposed to a liquid, immediately disconnect the power supply and have the machine checked by a certified technician. Not following these instructions may cause electric shock, or even death.
- Do not use the machine after it has fallen or is damaged in any other way. Have it checked and repaired by a certified technician.
- Do not walk with the appliance while operational and never try to move or carry the machine by the power cord.
- **ATTENTION!** Do not open the casing or try to repair the appliance yourself (unless instructed). This may void warranty or cause damage and hazardous situations.
- Do not insert any objects in the casing or openings of the machine.
- Only use original and/or designated accessories and spare parts.
- Never put your hands or other body parts near the moving parts of the machine while operational.
- Always keep an eye on the machine when in use.
- Keep all packaging away from children and dispose of packaging in accordance with local, state and national regulations.
- Avoid overloading the machine.
- The electrical installation must satisfy the applicable local, state and national regulations.
- Switch off the machine before pulling the power plug out of the socket.
- Always disconnect the power supply when the machine is not in use. To pull the plug out of the socket, always pull on the plug and not on the cable.
- Do not touch the power plug with wet or damp hands.
- Keep the power cable away from operating range and do not cover the cable. Also make sure the power cable does not come in contact with sharp or hot objects and keep away from open fire.
- **ATTENTION!** As long as the power plug is in the electrical socket the machine is connected to the electric grid.

Product Specific Safety Guidelines

This machine may only be used for its intended purpose: To mix and blend food products.

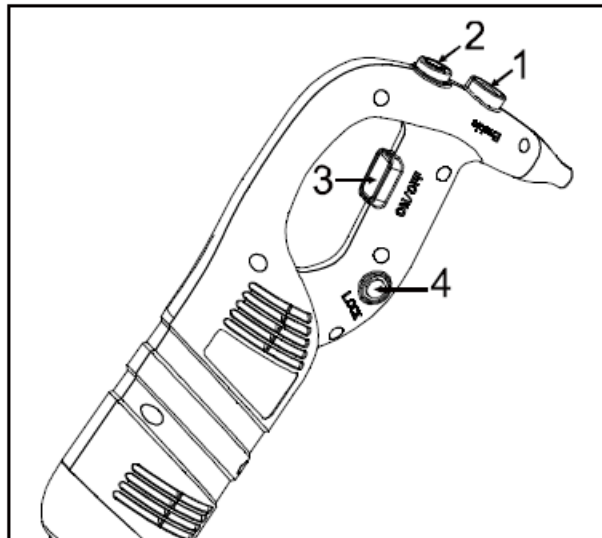


First Time Use

- Unpack and inspect your machine immediately after receipt. If there are any latent defects or damage to the machine then immediately contact your supplier. Save all packaging materials in case the machine needs to be returned or inspected by the freight carrier.
- Remove any protective film from all surfaces(if applicable).
- Read this instruction manual completely before attempting to install and operate this product. When in doubt, contact your supplier.
- If your machine is supplied with a factory fitted molded plug then you may plug the unit into a standard electrical outlet. Make sure that the voltage of the machine and the wall outlet are compatible. If your machine is not supplied with a factory fitted molded plug then a qualified electrical engineer must be contracted to wire the unit to the power supply.
- Before using the appliance for the first time, it is recommended to clean the appliance according to instructions (see chapter "Cleaning and Maintenance").

Installation

1. Install the required parts & accessories (if applicable).
2. Plug the power plug into a grounded and compatible socket.



Operation

STARTING AND STOPPING THE BLENDER

1. Check that the ON/OFF button [3] is in the released position.
2. Press and hold down the safety button [1] (if present).
3. Press the ON/OFF button [3], and the blender will start.
4. To stop the blender, release the ON/OFF button [3] and the safety button [1] will release automatically.

CONTINUOUS OPERATION:

Follow steps 1 to 3 above, then:

- 4. While the ON/OFF button [3] is activated and the machine is operating, press the lock button [4].
- 5. Now you can release the ON/OFF button [3], and the appliance will operate continuously.
- 6. To stop the appliance, press and release the ON/OFF button [3] again.

VARIABLE-SPEED OPERATION

Follow steps 1 to 3 above, then:

- 4. To change the speed of the motor, turn the variable speed button [2] towards the maximum or minimum as desired. The device is self-regulating. This ensures that once you have selected a speed, it will remain constant, even if the consistency of your mixture changes.
- **Note:** It is advised to start at low speed and gradually increase speed as required

HANDLING AND POSITIONING

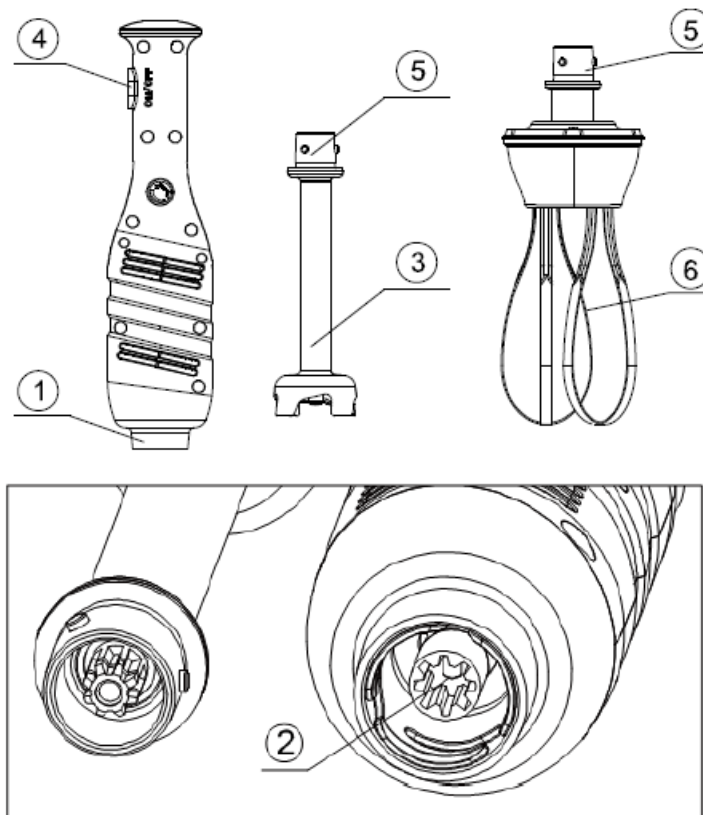
- For better control, we recommend to hold the blender by the handle with one hand and at the bottom of the body with the other hand.

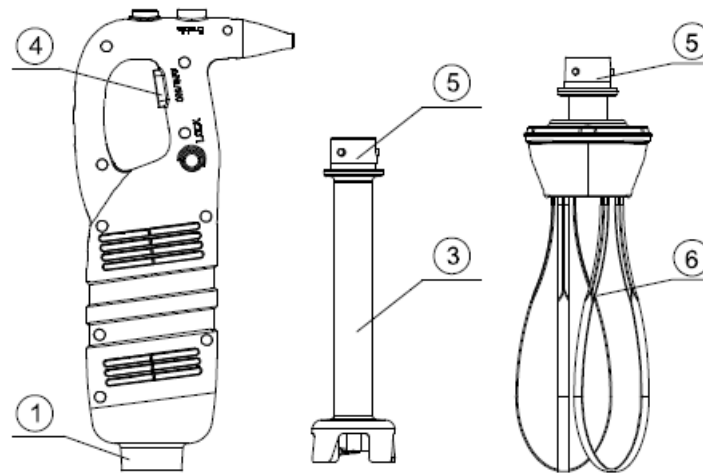
- It is best to tilt the bender at a slight angle. This will help prevent the tip from touching the bottom of the container.
- Sufficiently immerse the shaft/whisk (about 2/3) to avoid splashing. Do not immerse the whisk coupling.
- Make sure that the the motor unit and especially the air vents do not come into contact with any liquid.

ASSEMBLY & DISASSEMBLY

- Only mount or demount accessories after the device had been switched off and the power plug is disconnected from the socket.
- Align the coupling [5] of the shaft [3] or whisk [6] with the in the transmission [2] of the machine body [1] and insert it. Then turn to lock it in position firmly. To disassemble, simply follow these instructions in reverse order.

Model: 08410000





Troubleshooting

The follow overview will help you understand possible problems. However, only qualified technicians should attempt to open or repair the machine. Contact your supplier when in doubt.

Problem	Possible Cause	Possible Solution
The appliance does not work.	<ul style="list-style-type: none"> • The appliance is switched off. • The power supply is interrupted. • The voltage is not correct. • The safety button is activated. 	<ul style="list-style-type: none"> • Switch on the appliance. • Check the power supply, plug in power cable. • Use a compatible power source. • Deactivate the safety button.
The attachments does not rotate.	<ul style="list-style-type: none"> • Attachment malfunction. • Motor and or coupling defective 	<ul style="list-style-type: none"> • Clean, repair or replace the attachment. • Contact supplier.
The appliance has stopped working.	Overheated, thermal safety mechanism is activated.	Switch off, disconnect power and let the appliance cool down. Then restart.

Cleaning and Maintenance

- Maintenance and repairs should only be done by a certified technician.
- Regularly check and clean the appliance, its parts and accessories (if applicable).
- Regularly check the power plug and power cable for damage. If either is damaged do not use the appliance. Instead, have it repaired by a certified electrical engineer.
- Always switch off and disconnect the power supply before cleaning or maintenance.
- If used in a hot or warm preparation, the attachments might become hot. Let them cool down before cleaning or maintenance.

- **ATTENTION!** Never use aggressive cleaning agents or abrasives. Do not use solvents or petrol based cleaning agents. Some cleaning agents may leave harmful residues or cause damage to the machine. Use a mild and food-safe cleaning product instead.
- **ATTENTION!** Do not use any scourer and sharp or pointed objects during cleaning, this may cause damage to the machine.
- **ATTENTION!** Never hose down the machine or immerse it in water or any other liquid, instead wipe the exterior with a damp cloth. Do not use a steamer to clean the appliance
- **ATTENTION!** Never let the power cable or power plug get wet or damp.
- Clean the attachments using a soft brush or cloth and warm water with a mild food-safe detergent. Do not clean the parts in a dishwasher. Rinse under tap to remove soap residue. Make sure not to immerse the couplings [5]
- Always dry the appliance, parts and attachments after cleaning using a soft cloth.

Storage

- Make sure the appliance is cleaned properly before storage.
- Coil up the power cable and put it away.
- Store in a cool and dry place.

Discarding

When discarding the appliance, do so in compliance with local, state and national regulations.

Guarantee

- Thank you for using our products, our company will follow related provisions from our “Algemene Voorwaarden”, and provide you services when you can show us the invoice.
We provide 12-month warranty from the date of purchase (invoice date). In the warranty period, our company is responsible for free parts if there is a device fault or quality problem of spare parts under correct operation.

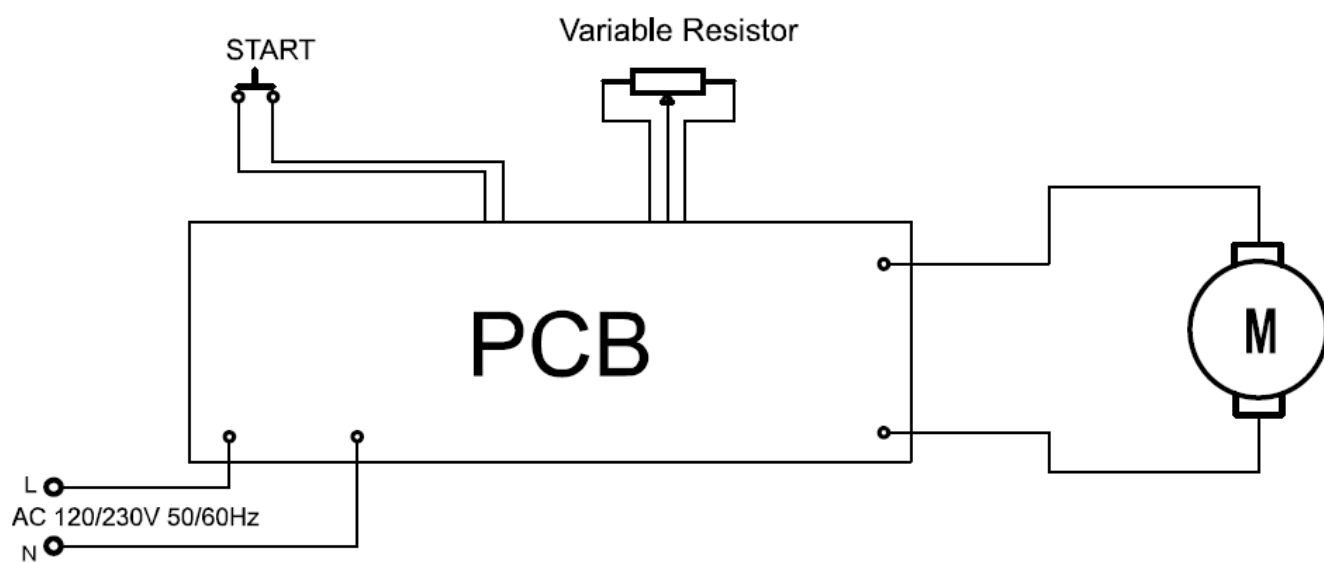
The following is not included in the free service:

1. Damages result from transportation, installation, improper connections.
2. Component damages caused by failing to provide power and voltage as required in technical data.
3. Damages caused by disassembling products, adjust or change the mechanical and electrical structures without permission.
4. Damage caused by improper operation, cleaning and maintenance.
5. Non-man-made damage, such as damages from abnormal voltage, fire, building collapse, lightning, floods and other natural disasters, and damages from rats and other pests.
6. Failure in following the manual when operating.
7. Wearable and expendable parts.
8. Altered invoice or without invoice.

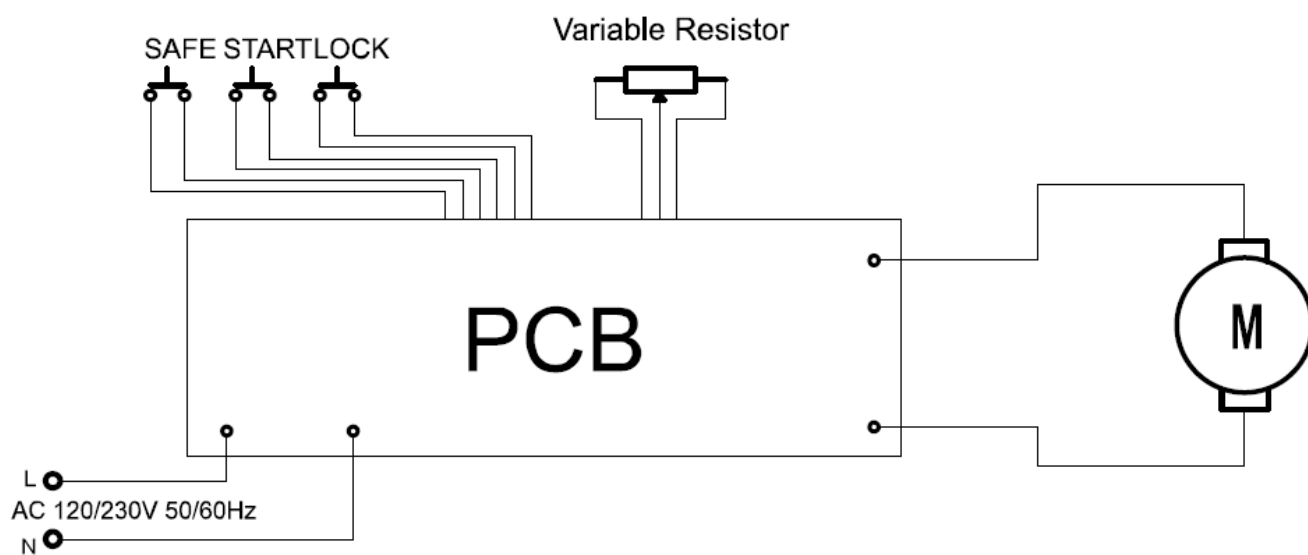
In line with our policy of continuous development, we reserve the right to alter the product, the packaging or the documentation without prior notice.

CIRCUIT DIAGRAM

Model: 08410000

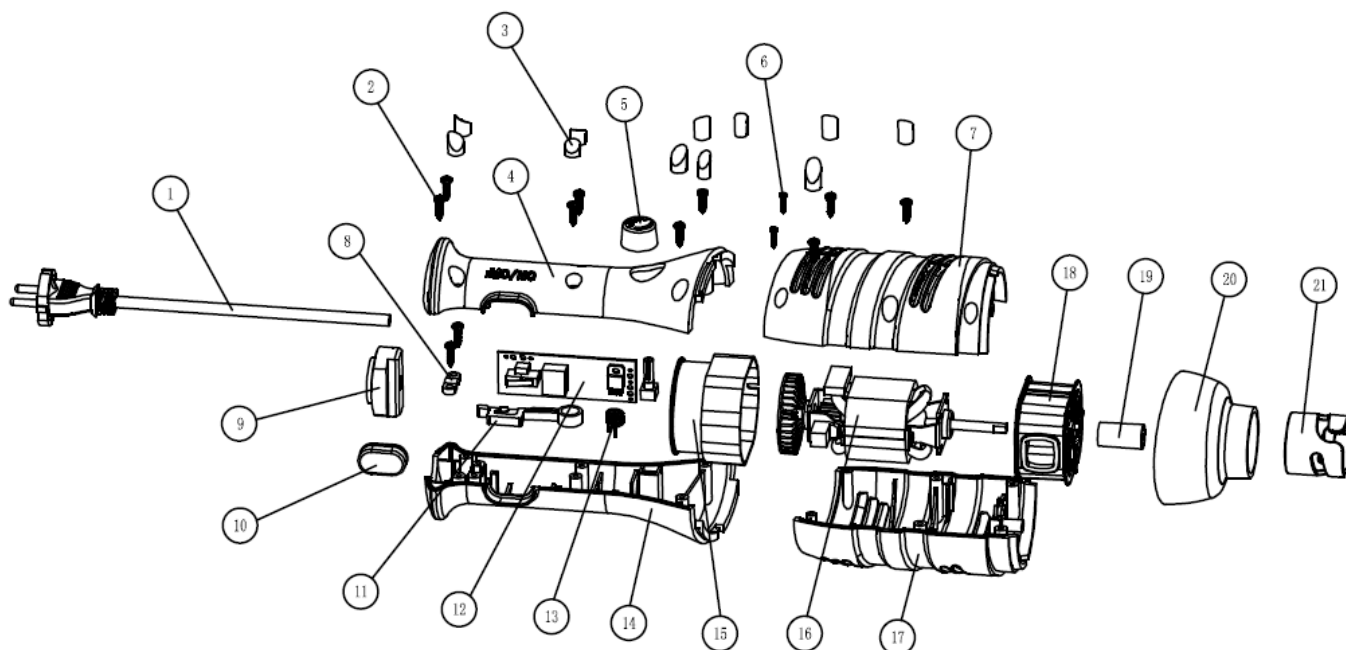


Model: 08410100 - 08410125



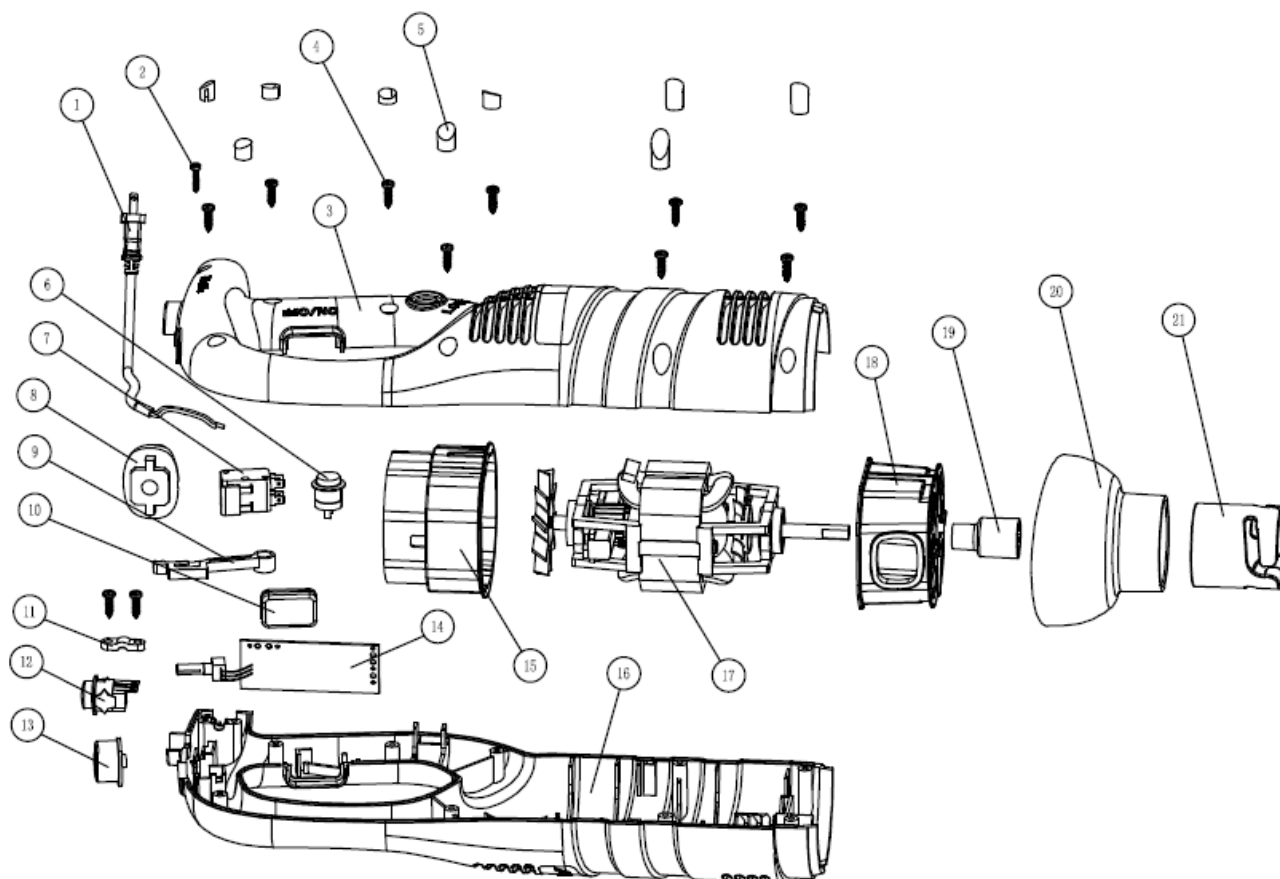
EXPLODED VIEW

Model: 08410000



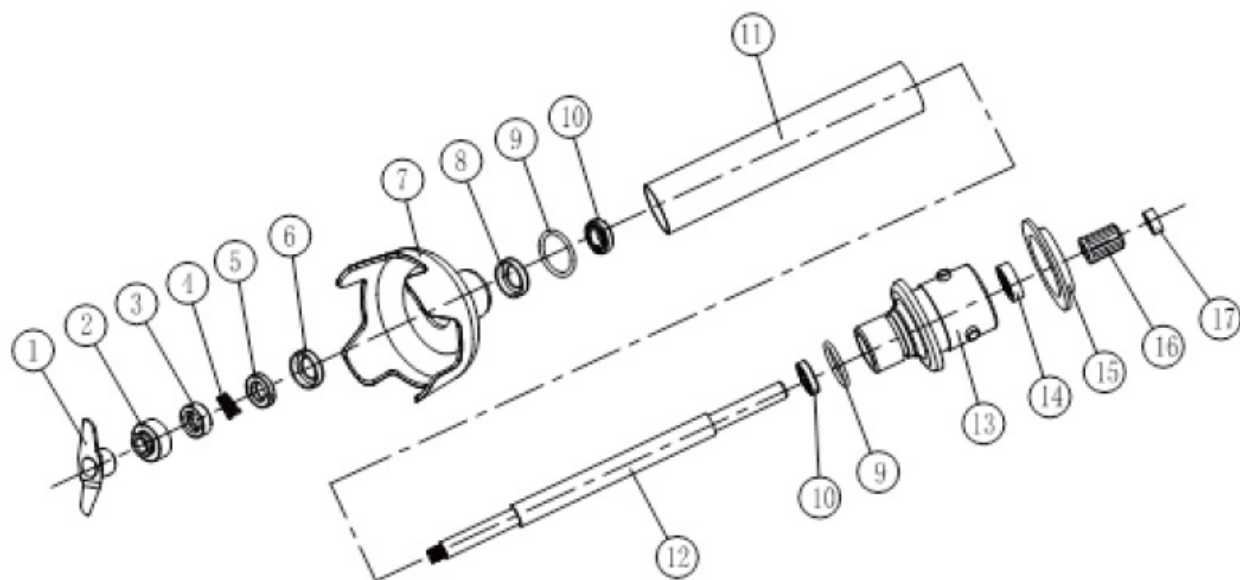
1. Power Cable
2. Screw
3. Screw Housing
4. Handle Body
5. Speed Control
6. Screw
7. Motor Casing
8. Bracket
9. Cable Sheath
10. Switch Sheath
11. Switch Lever
12. Speed Control PCB
13. Torsion Spring
14. Handle Body
15. Fan Outlet Chamber
16. Motor
17. Motor Casing
18. Air Inlet Chamber
19. Axle Sleeve
20. Head
21. Locking Bracket

Model: 08410100 – 08410125



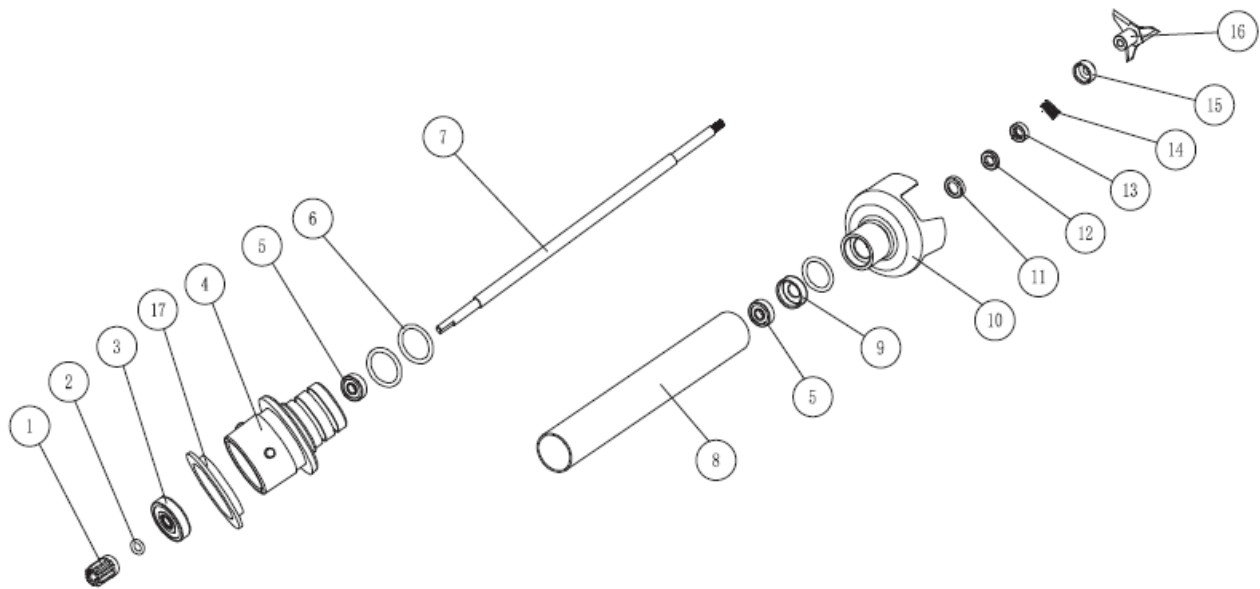
1. Power Cable
2. Screw
3. Main Body
4. Screw
5. Screw Housing
6. Speed Control Button
7. Micro Switch
8. Cable Sheath
9. Switch Lever
10. Switch Sheath
11. Bracket
12. Safety Button
13. Speed Switch
14. Speed Control PCB
15. Fan Outlet Chamber
16. Main Body
17. Motor
18. Air Inlet Chamber
19. Axle Sleeve
20. Head
21. Locking Bracket

Model: 08410010



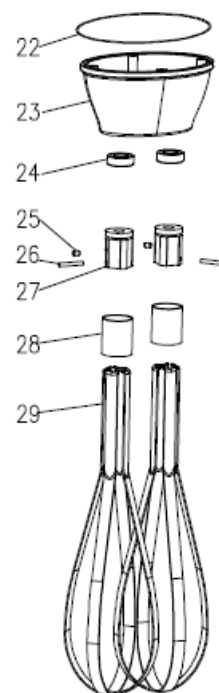
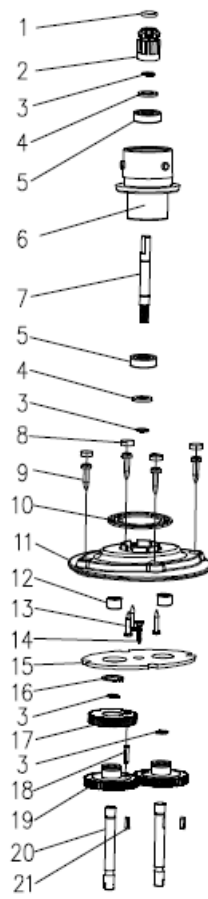
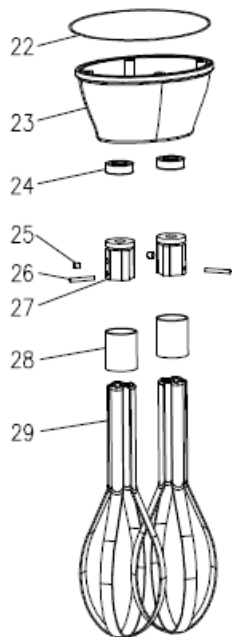
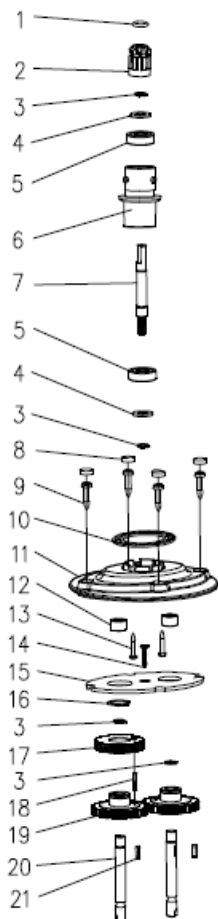
1. Blade
2. Convex Ring
3. Graphite Ring
4. Spring
5. Ceramic Ring
6. Ceramic Ring Sleeve
7. Knife Guard
8. Bearing Sleeve
9. Seal Ring
10. Bearing (W688Z)
11. Shaft
12. Axle
13. Connection Coupling
14. Oil Seal
15. Rubber Gasket
16. Gear
17. Rubber Ring

Model: 08410200 – 08410235



1. Gear
2. Seal Ring
3. Oil Seal
4. Connection Coupling
5. Bearing
6. Seal Ring
7. Axle
8. Shaft
9. Bearing Sleeve
10. Knife Guard
11. Ceramic Ring Sleeve
12. Ceramic Ring
13. Graphite Ring
14. Spring
15. Convex Ring
16. Blade
17. Rubber Gasket

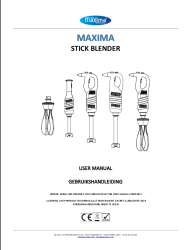
Model: 08410020 & 08410240



1. Silicone Ring
2. Gear
3. Snap Ring Ø8
4. Washer
5. Bearing
6. Coupling
7. Drive Shaft
8. Screw Plunger
9. Screw Housing
10. Real Ring
11. Gearbox Cover
12. Needle Bearing
13. Screw
14. Screw
15. Baffle Plate
16. Snap Ring Ø16
17. Helical Gear
18. Pin
19. Straight Gear
20. Drive Shaft
21. Pin
22. Seal Ring
23. Gearbox Casing

- 24. Oil Seal
 - 25. Screw
 - 26. Pin
 - 27. Whisk Bracket
 - 28. Sleeve
 - 29. Whisk
-

Documents / Resources

	<p>maxima MSB280W Stick Blender [pdf] User Manual MSB280W Stick Blender, MSB280W, Stick Blender, Blender</p>
---	--

References

- [👑 Professional Catering Equipment from Maxima](#)
- [User Manual](#)

Manuals+. [Privacy Policy](#)

This website is an independent publication and is neither affiliated with nor endorsed by any of the trademark owners. The "Bluetooth®" word mark and logos are registered trademarks owned by Bluetooth SIG, Inc. The "Wi-Fi®" word mark and logos are registered trademarks owned by the Wi-Fi Alliance. Any use of these marks on this website does not imply any affiliation with or endorsement.