



MaxiCool WIFI USB 01 WiFi Smart Kit Owner's Manual

[Home](#) » [MaxiCool](#) » MaxiCool WIFI USB 01 WiFi Smart Kit Owner's Manual 

Contents

- 1 MaxiCool WIFI USB 01 WiFi Smart Kit
- 2 IMPORTANT NOTE:
- 3 DECLARATION OF CONFORMITY
- 4 1. SPECIFICATION
- 5 2. PRECAUTIONS
- 6 3. DOWNLOAD AND INSTALL APP
- 7 4. INSTALL THE SMART KIT (wireless module)
- 8 5. USER REGISTRATION
- 9 6. NETWORK CONFIGURATION
- 10 7. HOW TO USE APP
- 11 8. SPECIAL FUNCTIONS
- 12 FCC ID: 2AS2HMZNA19
- 13 Specifications
- 14 QUICK Instructions
 - 14.1 1. Precautions
 - 14.2 2. Download and Install App
 - 14.3 3. Install the Smart Kit (Wireless Module)
 - 14.4 4. User Registration
 - 14.5 5. Network Configuration
 - 14.6 Using Android Device for Network Configuration:
- 15 Frequently Asked Questions (FAQ)
 - 15.1 Q: Can I use this Smart Kit with any brand of air conditioner?
 - 15.2 Q: Do I need an internet connection for the Smart Kit to function?
- 16 Documents / Resources
 - 16.1 References
- 17 Related Posts

MaxiCool WIFI USB 01 WiFi Smart Kit



MODEL: WIFI USB 01

IMPORTANT NOTE:

Read the manual carefully before installing or connecting your Smart kit (Wireless module). Make sure to save this manual for future reference.

DECLARATION OF CONFORMITY

Hereby, we declare that this Smart kit is in compliance with the essential requirements and other relevant provisions of Directive 2014/53/EU.

A copy of the full DoC is attached. (European Union products only)

1. SPECIFICATION

| | |
|---------------------------|------------------------|
| Model | WIFI USB 01 |
| Standard | IEEE 802.11 b/g/n |
| Antenna Type | Printed PCB Antenna |
| Frequency | WLAN 2400 ~ 2483.5 MHz |
| Maximum Transmitted Power | 19.8 dBm Max.. |
| Operation Temperature | 0°C~45°C/32°F~113°F |
| Operation Humidity | 10%~85% |
| Power Input | DC 5 V/300 mA |

2. PRECAUTIONS

- Applicable system: IOS, Android. (Suggest: IOS 8.0 or later, Android 4.0 or later) Please keep you APP up to date with the latest version.

Due to special situation may be occurred, we explicitly claims below: Not all of the Android and iOS system are

compatible with APP. We will not be responsible for any issue as a result of the incompatibility.

- Wireless safety strategy Smart kit only support WPA-PSK/WPA2-PSK encryption and none encryption. WPA-PSK/WPA2-PSK encryption is recommended.

CAUTION

- Due to different network situation, control process may return time-out sometimes. If this situation occurs, the display between board and App may not be the same, please do not feel confused.
- Smart Phone camera needs to be 5 million pixels or above to make sure scan QR code well.
- Due to different network situation, sometimes, request time-out could happen, thus, it is necessary to do network configuration again.
- The APP system is subjected to update without prior notice for product function improvement. The actual network configuration process may be slightly different from the manual, the actual process shall prevail.
- Please Check The Service Website For More Information.

3. DOWNLOAD AND INSTALL APP

Caution: The following QR Code is only available for downloading APP. It is totally different with the QR code packed with SMART KIT.

Android



iOS

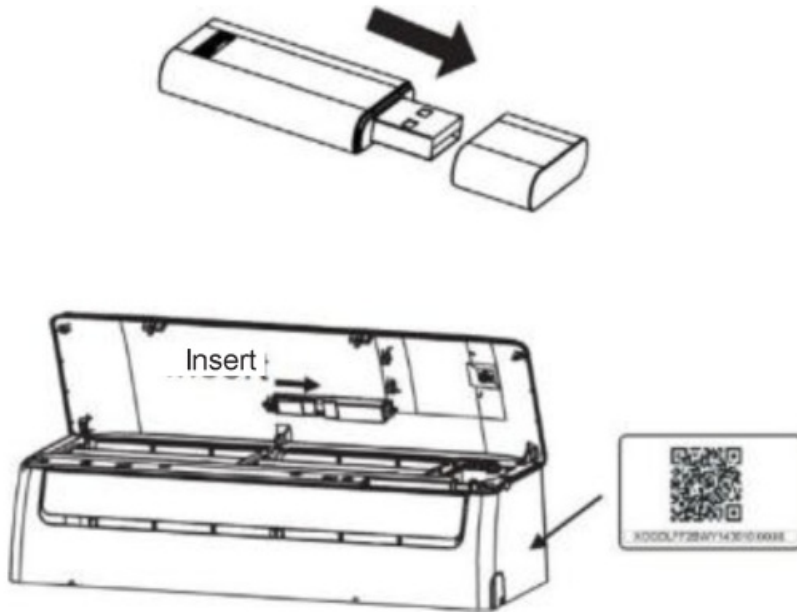


- Android Phone users: scan Android QR code or go to Google Play, search 'NetHome Plus' app and download it.
- iOS users: scan iOS QR code or go to APP Store, search 'Nethome Plus' app and download it.

4. INSTALL THE SMART KIT (wireless module)

1. Remove the protective cap of the smart kit (wireless module)
2. Open the front panel and insert the smart kit (wireless module) into the reserved interface.
3. Attach the QR code packed with Smart kit (wireless module) to the side of the machine, ensure it is convenience to be scanned by the mobile phone.

Alternatively, user can take picture of the QR Code and save in into their own phone.

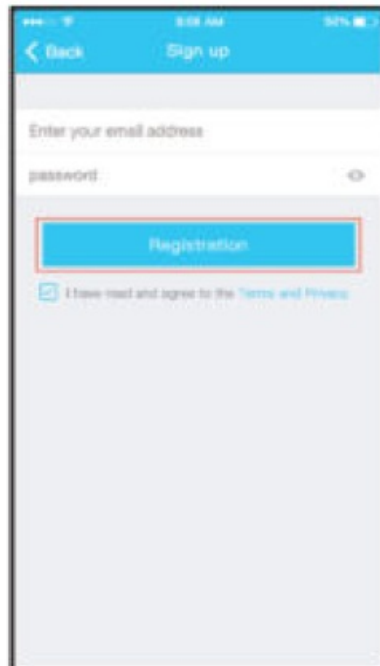


WARNING: This interface is only compatible with SMART KIT (wireless module) provided by the manufacturer.

5. USER REGISTRATION

- Please ensure your mobile device is connected to Wifi router. Also, the Wifi router has already connected to Internet before doing user registration and network configuration.
- It is better to log in your email box and active your registration account by clicking link in case you forget the password.

1. Click “Sign up”
2. Enter your email address and password, and then click “Registration”,



6. NETWORK CONFIGURATION

CAUTIONS:

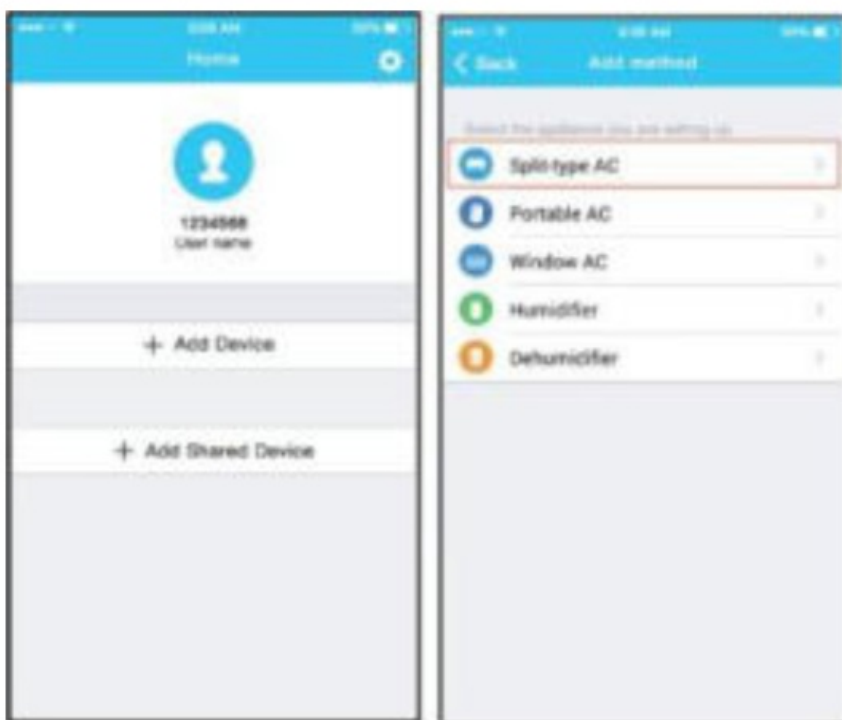
- It is necessary to forget any other around network and make sure the Android or iOS device just connect to the Wireless network you want to configure,
- Make sure the Android or iOS device Wireless function works well and can be connected back to your original Wireless network automatically.

Kindly reminder:

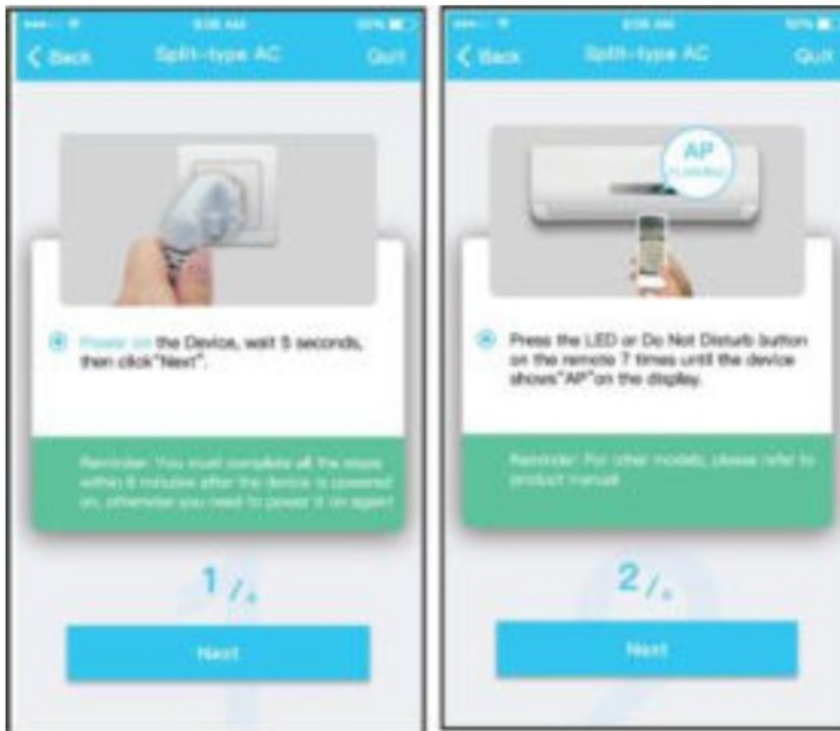
User must finish all the steps in 8 minutes after powering on air conditioner, otherwise you need to power on it again

Using Android device to do network configuration:

1. Make sure your mobile device has already been connect to the Wireless network which you want to use, Also, you need to forget other irrelevant Wireless network in case it influences your configuration process.
2. Disconnect the power supply of air conditioner.
3. Connect the power supply of AC, and continuously press the “LED DISPLAY” or “DO NOT DISTURB” button seven times in 10 seconds.
4. When the unit displays “AP”, it means that the air conditioner wireless has already entered into “AP” Mode.
 - Some type of air conditioner do not need the 2. step to be in AP.
5. Press “+ Add Device”
6. Select the appliance you are setting up password and click “OK”.

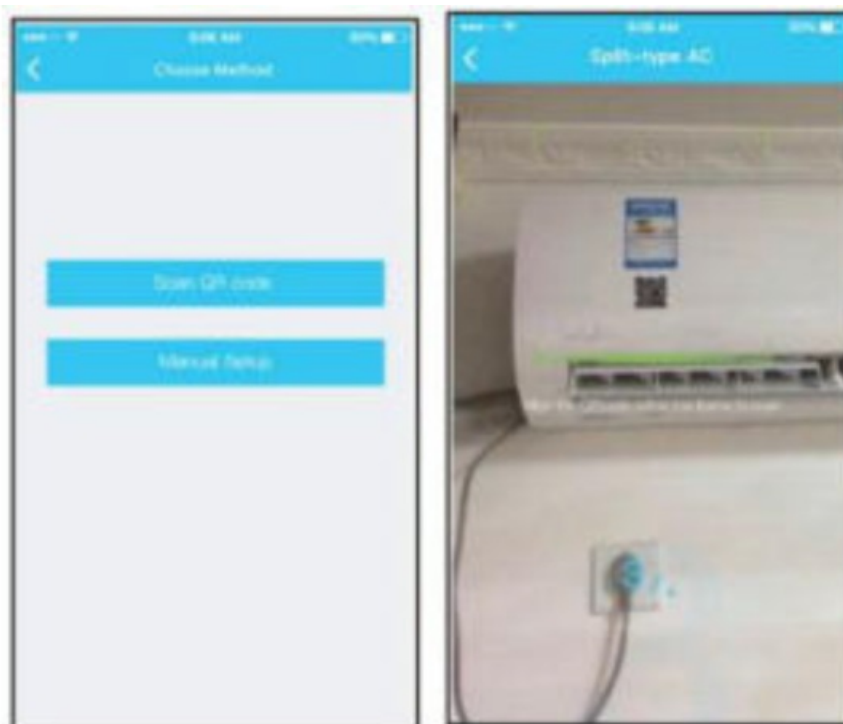


7. Follow the above steps to enter “AP” mode



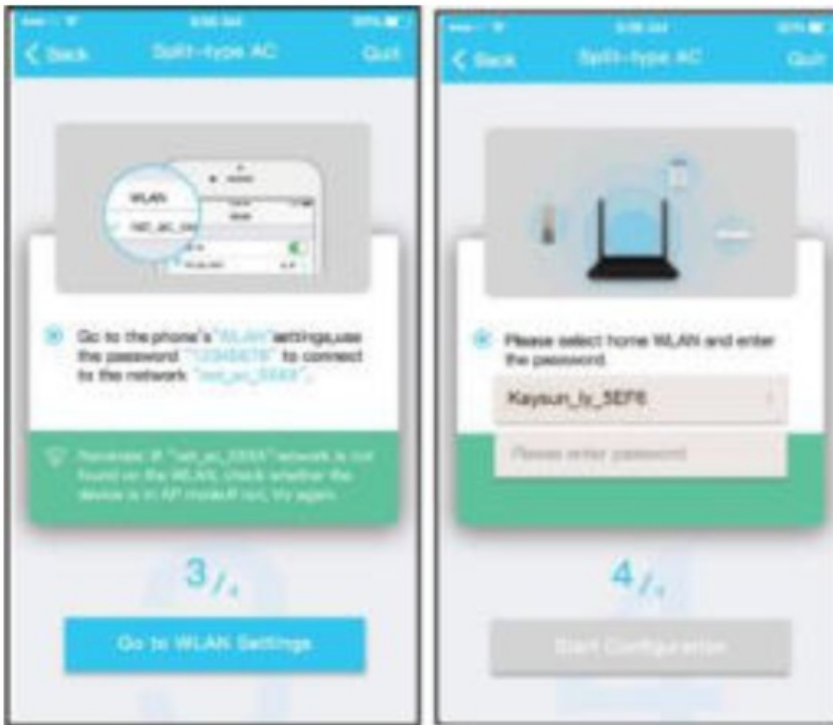
8. Choose the network configuration method

9. Choose the “Scan the QR code” method



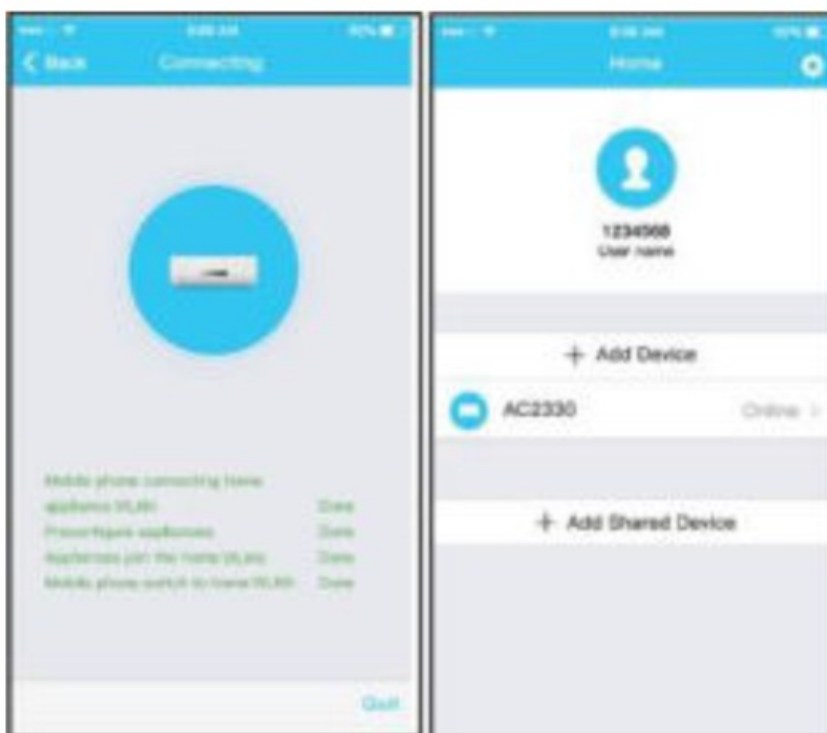
9. Or choose the “Manual Setup” method

10. Please enter the password



11. Network configuration is successful

12. Configuration Success, you can see the device on the list



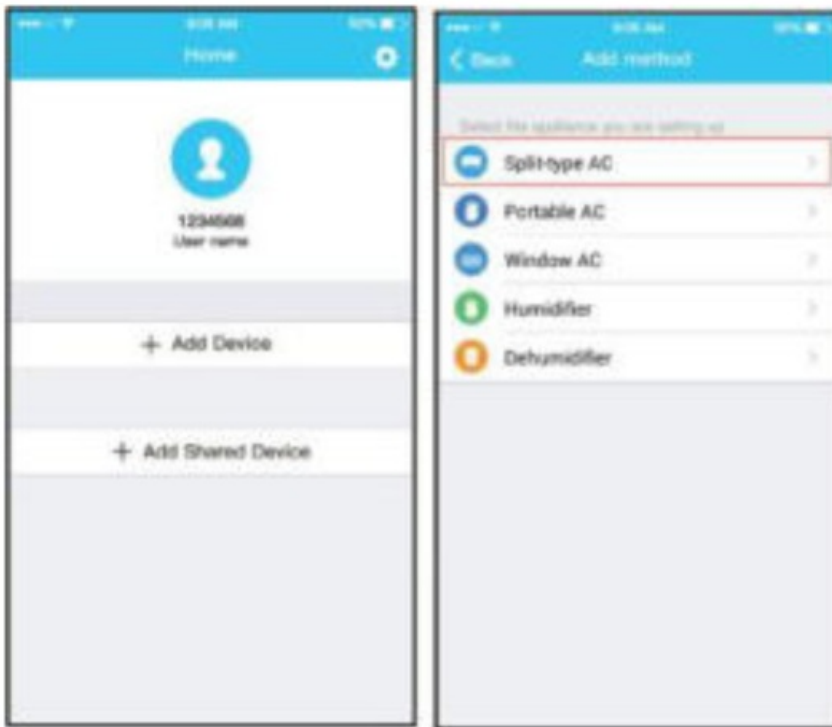
Using iOS device to do network configuration:

1. Make sure your mobile device has already been connect to the Wireless network which you want to use, Also, you need to forget other irrelevant Wireless network in case it influences your configuration process.
2. Disconnect the power supply of AC (some units).
3. Connect the power supply of AC, and continuously press the “LED DISPLAY” or “DO NOT DISTURB” button seven times in 10 seconds.

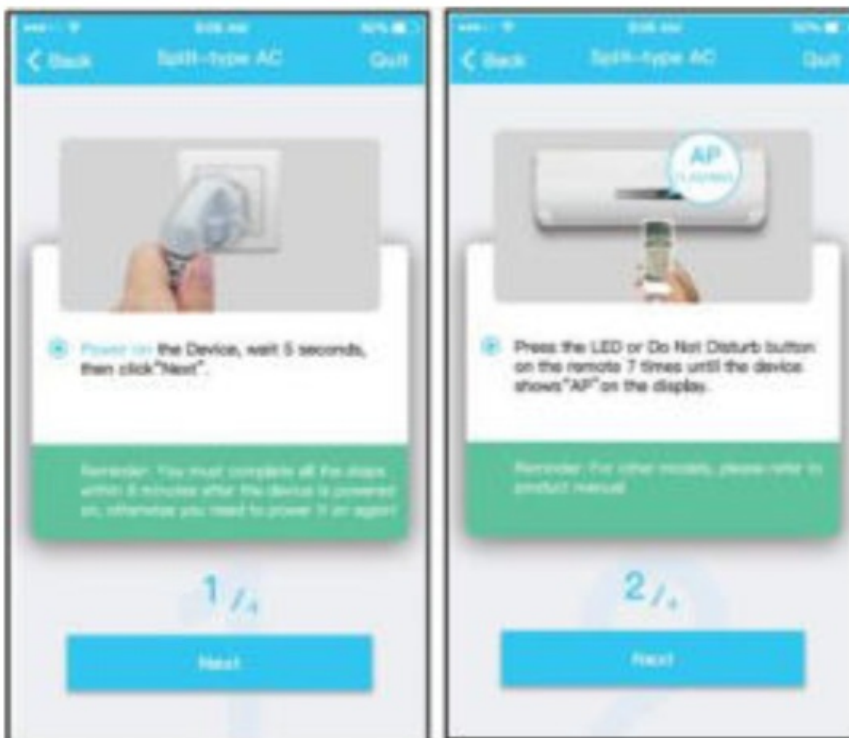
4. When the unit displays “AP”, it means that the air conditioner wireless has already entered into “AP” Mode.

5. Press “+ Add Device”

6. Select the appliance you are setting up password and click “OK”.

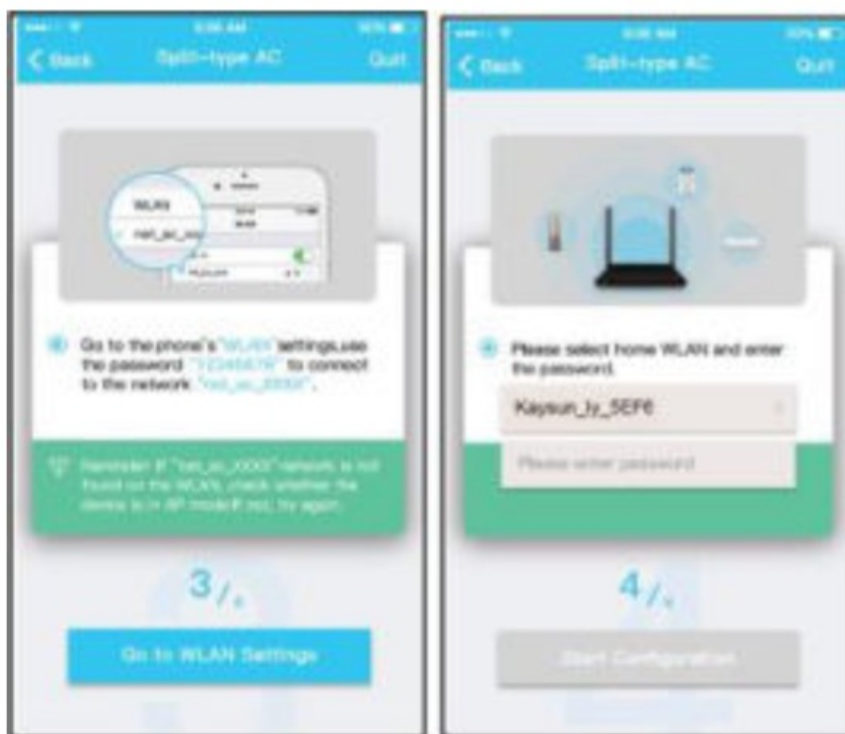


7. Follow the above steps to enter “AP” mode



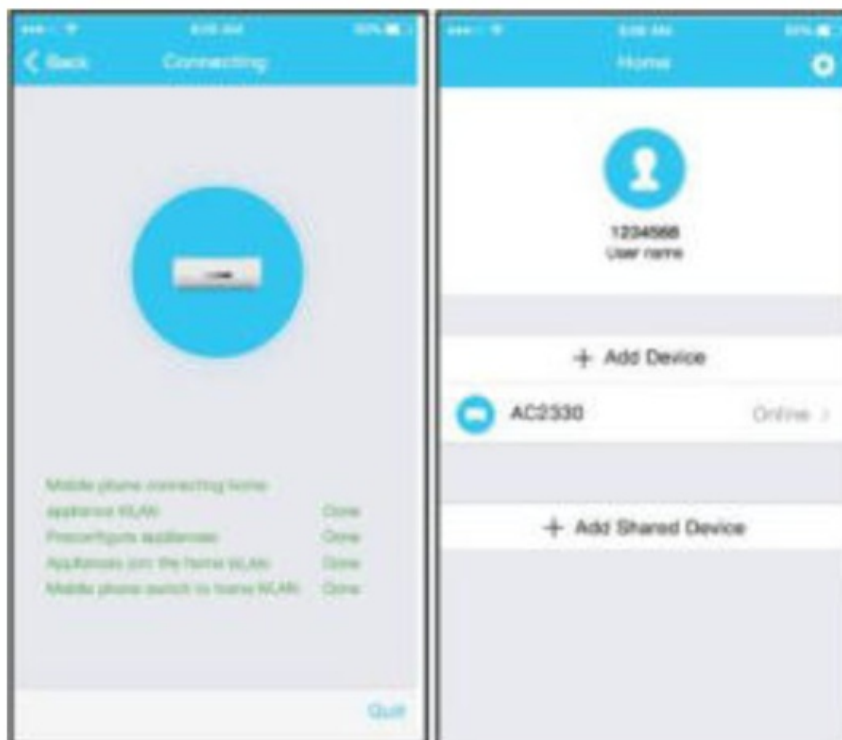
8. Connect to the Wireless network

9. Please enter password



10. Network configuration is successful

11. Configuration Success, you can see the device on the list.



NOTE:

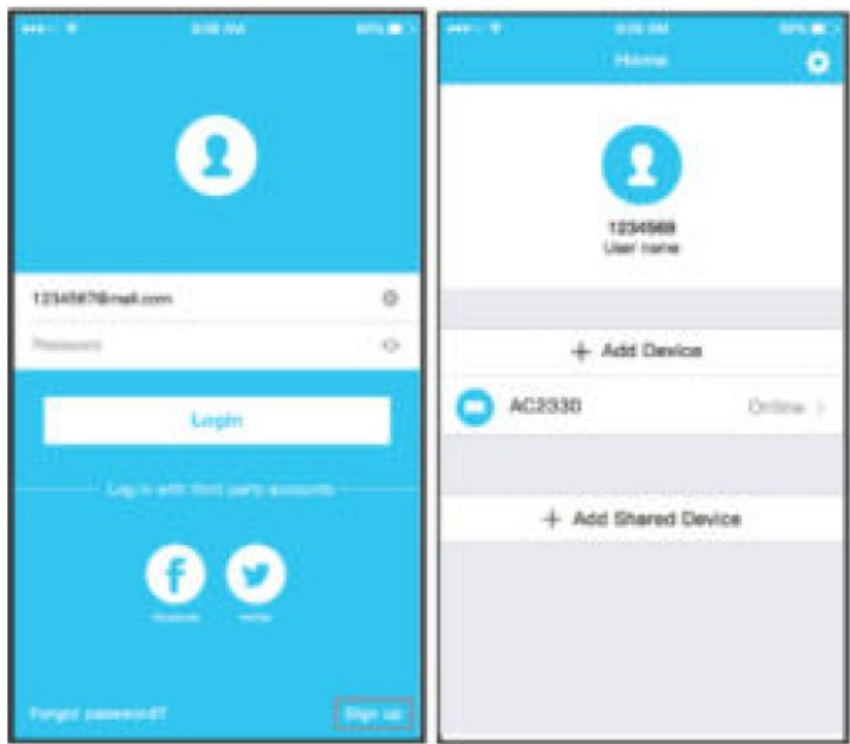
- When finishing network configuration, APP will display success cue words on the screen.
- Due to different internet environment, it is possible that the device status still display "offline". If this situation

occurs, it is necessary to pull and refresh the device list on the APP and make sure the device status become “online”. Alternatively, user can turn off the AC power and turn on it again, the device status will become “online” after few minutes.

7. HOW TO USE APP

Please ensure both your mobile device and air conditioner are connected to the Internet before using app to control the air conditioner via Internet, please follow the next steps:

- 1. Click “Sign up”
- 2. Choose the air conditioner



- 3. Thus, user can control air conditioners on/off status, operation mode, temperature, fan speed and so on.

NOTE: Not all the function of the APP is available on air conditioner. For example: ECO, Turbo, Swing function, please check the user manual to find more information.



8. SPECIAL FUNCTIONS

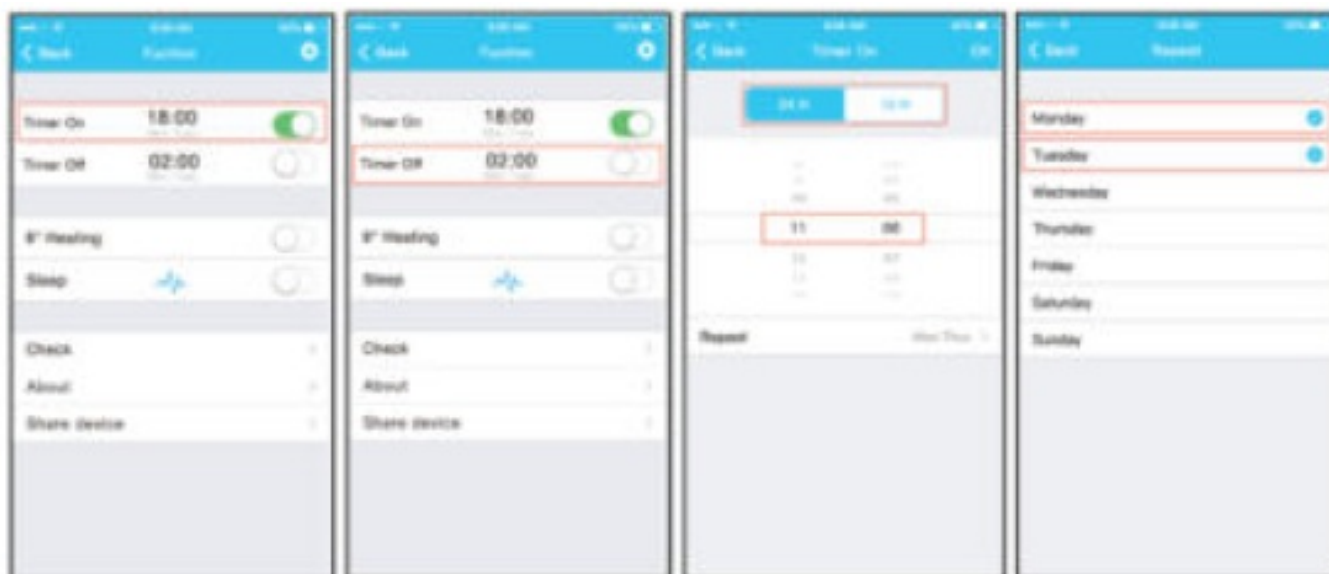
Including: Timer On, Timer Off, 8°C Heat, Sleep, Check.

NOTE: If the air conditioner do not support the above function, the function will be hided from the function list.

Timer On / Timer Off

Weekly, user can make an appointment to turn on or off AC on specific time.

User also can choose circulation to keep the AC under schedule control every week.



8°C Heat

User can let the AC run under 8°C Heat by one-click. When people go outside, this function can protect your furniture from frost damage.



Sleep

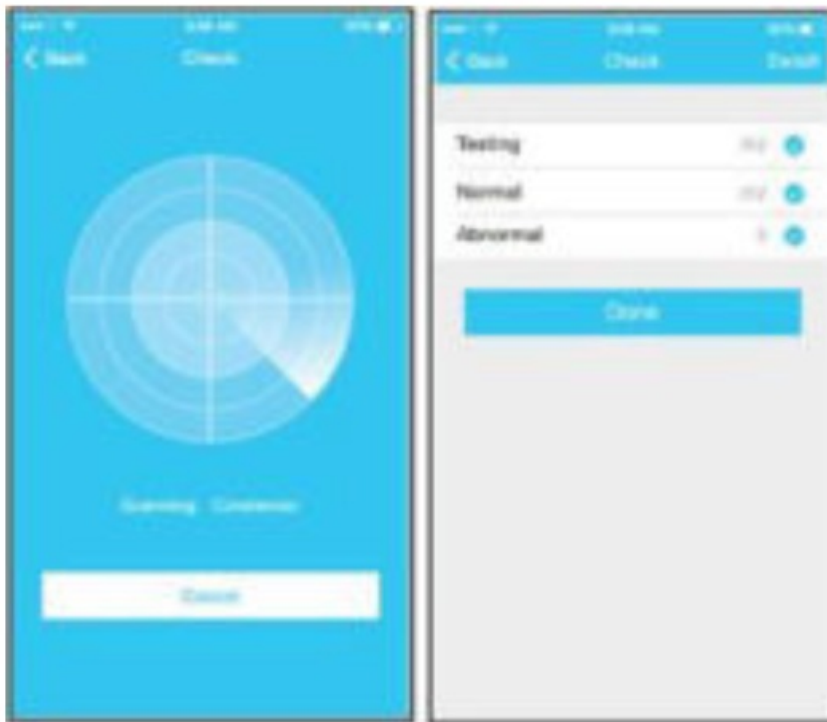
User can customize their own comfortable sleep by setting target temperature.



Check

User can simply check the AC running status with this function. When finishing this procedure, it can display the

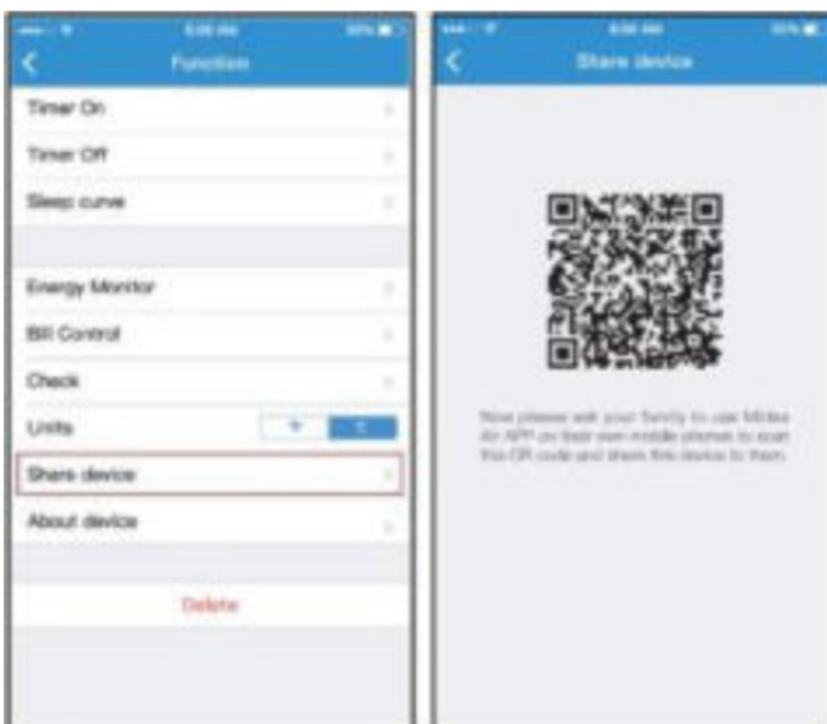
normal items, abnormal items, and detail information.



Share Device

The air conditioner can be controlled by multi-users at the same time by Share Device function

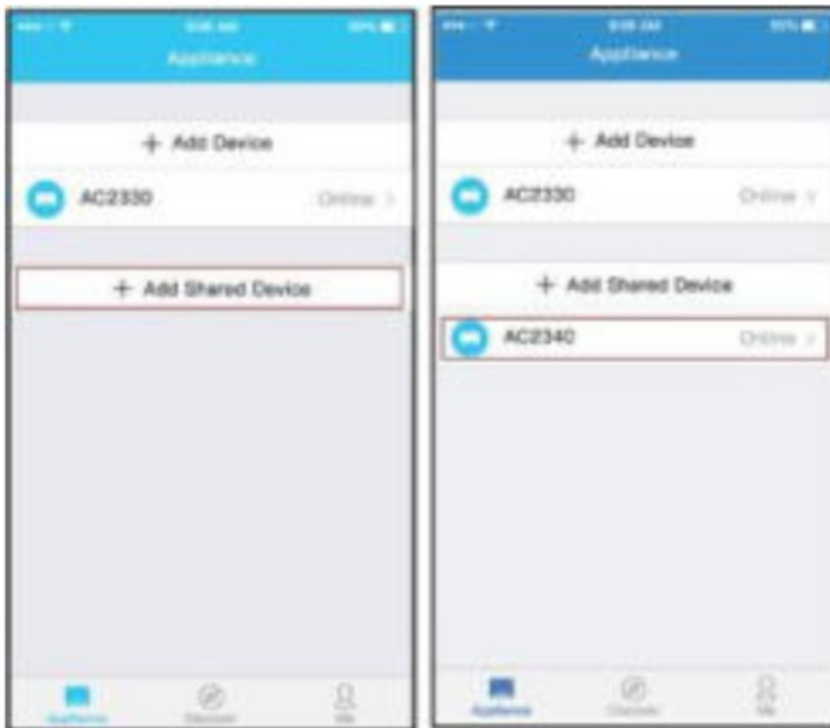
1. Click "Share device"
2. QR code display.



3. The other users must log in 'Nethome Plus' app first, then click "Add Share Device" on their own mobile, then

ask them to scan the QR code.

4. Now the others can add the shared device.



FCC ID: 2AS2HMZNA19

IC : 24951-MZNA19

This device complies with Part 15 of the FCC Rules and Industry Canada's licence-exempt RSSs.

Operation is subject to the following two conditions:

- (1) This device may not cause interference; and
- (2) This device must accept any interference, including interference that may cause undesired operation of the device

Only operate the device in accordance with the instructions supplied. Changes or modifications to this unit not expressly approved by the party responsible for compliance could void the user's authority to operate the equipment.

This device complies with FCC radiation exposure limits set forth for an uncontrolled environment. In order to avoid the possibility of exceeding the FCC radio frequency exposure limits, human proximity to the antenna shall not be less than 20cm (8 inches) during normal operation.

NOTE: This equipment has been tested and found to comply with the limits for a Class B digital device, pursuant to part 15 of the FCC Rules. These limits are designed to provide reasonable protection against harmful interference in a residential installation. This equipment generates, uses and can radiate radio frequency energy and, if not installed and used in accordance with the instructions, may cause harmful interference to radio communications. However, there is no guarantee that interference will not occur in a particular installation. If this equipment does cause harmful interference to radio or television reception, which can be determined by turning the equipment off and on, the user is encouraged to try to correct the interference by one or more of the following measure:

- Reorient or relocate the receiving antenna.
- Increase the separation between the equipment and receiver.
- Connect the equipment into an outlet on a circuit different from that to which the receiver is connected.
- Consult the dealer or an experienced radio/TV technician for help.

Company will not be liable for any issues and problems caused by Internet, Wireless Router and Smart Devices. Please contact the original provider to get further help.

Specifications

- **Model:** WIFI USB 01
- **Standard:** WiFi Smart Kit
- **Antenna Type:** Standard Antenna
- **Frequency:** Not specified
- **Maximum Transmitted Power:** Not specified
- **Operation Temperature:** Not specified
- **Operation Humidity:** Not specified
- **Power Input:** Not specified

QUICK Instructions

1. Precautions

CAUTION: Follow safety guidelines and precautions while handling the Smart Kit.

2. Download and Install App

Android: Scan the Android QR code or download 'NetHome Plus' from Google Play Store.

iOS: Scan the iOS QR code or download 'NetHome Plus' from the App Store.

3. Install the Smart Kit (Wireless Module)

1. Remove the protective cap of the smart kit.
2. Insert the smart kit into the reserved interface on the machine.
3. Attach the QR code to the side of the machine for easy scanning by a mobile phone.

4. User Registration

Ensure your mobile device is connected to a WiFi router and the router is connected to the internet.

Log in to your email and activate your registration account by clicking the link provided.

5. Network Configuration

CAUTIONS:

- Ensure the device is connected only to the desired Wireless network.
- Make sure the Wireless function on the device is working correctly.
- User must complete all steps within 8 minutes after powering on the air conditioner.

Using Android Device for Network Configuration:

1. Connect your mobile device to the desired Wireless network.
2. Disconnect the power supply of the air conditioner.
3. Connect the power supply of the AC and follow specific button press instructions to enter AP mode.
4. Select the appliance, set a password, and follow instructions to enter AP mode.



Frequently Asked Questions (FAQ)

Q: Can I use this Smart Kit with any brand of air conditioner?

A: The interface is only compatible with SMART KIT provided by the manufacturer.

Q: Do I need an internet connection for the Smart Kit to function?

A: Yes, ensure your WiFi router is connected to the internet for proper functionality.

Documents / Resources

| | |
|---|---|
|  | <p>MaxiCool WIFI USB 01 WiFi Smart Kit [pdf] Owner's Manual CAC 81001020, WIFI USB 01 WiFi Smart Kit, WIFI USB 01, WiFi Smart Kit, Smart Kit, Kit</p> |
|---|---|

References

- [User Manual](#)

[Manuals+](#), [Privacy Policy](#)

This website is an independent publication and is neither affiliated with nor endorsed by any of the trademark owners. The "Bluetooth®" word mark and logos are registered trademarks owned by Bluetooth SIG, Inc. The "Wi-Fi®" word mark and logos are registered trademarks owned by the Wi-Fi Alliance. Any use of these marks on this website does not imply any affiliation with or endorsement.