


MaxiCool
MaxiCool RG10(D2S)
Remote Controller



MaxiCool RG10(D2S) Remote Controller Owner's Manual

[Home](#) » [MaxiCool](#) » MaxiCool RG10(D2S) Remote Controller Owner's Manual 

Contents

- 1 [MaxiCool RG10\(D2S\) Remote Controller](#)
- 2 [Product Usage Instructions](#)
- 3 [Remote Controller Specifications](#)
- 4 [Handling the Remote Controller](#)
- 5 [Buttons and Functions](#)
- 6 [Remote Screen Indicators](#)
- 7 [How to Use Basic Functions](#)
- 8 [How to Use Advanced Functions](#)
- 9 [Documents / Resources](#)
 - 9.1 [References](#)
- 10 [Related Posts](#)



MaxiCool RG10(D2S) Remote Controller



Specifications

Remote Controller Range: 8m

Product Usage Instructions

Handling the Remote Controller

To insert or replace batteries in the remote controller

1. Slide the back cover downward to expose the battery compartment.
2. Insert the batteries, ensuring the correct alignment with the symbols inside the compartment.
3. Slide the battery cover back into place securely.

Buttons and Functions

Before using the air conditioner, familiarize yourself with the remote control

- **ON/OFF:** Turns the unit on or off.
- **SET:** Scrolls through operation functions like Fresh, Sleep, Follow Me, etc. Press OK to confirm selection.
- **TEMP:** Decreases temperature in increments and has a minimum of 16°C.
- **FAN SPEED:** Selects fan speeds from 20% to 100%. Use TEMP buttons to adjust speed.
- **SWING:** Starts or stops horizontal louver movement. Hold for 2 seconds for vertical louver auto swing.
- **MODE:** Scrolls through operation modes: AUTO, COOL, DRY, HEAT, FAN (Note: HEAT mode not supported by cooling-only units).

FAQ

- **How do I dispose of batteries used in the remote controller?**

- If you do not plan to use the device for more than 2 months, dispose of batteries according to local laws for proper disposal of batteries.

- **What should I do if I am unsure about a function on the remote controller?**

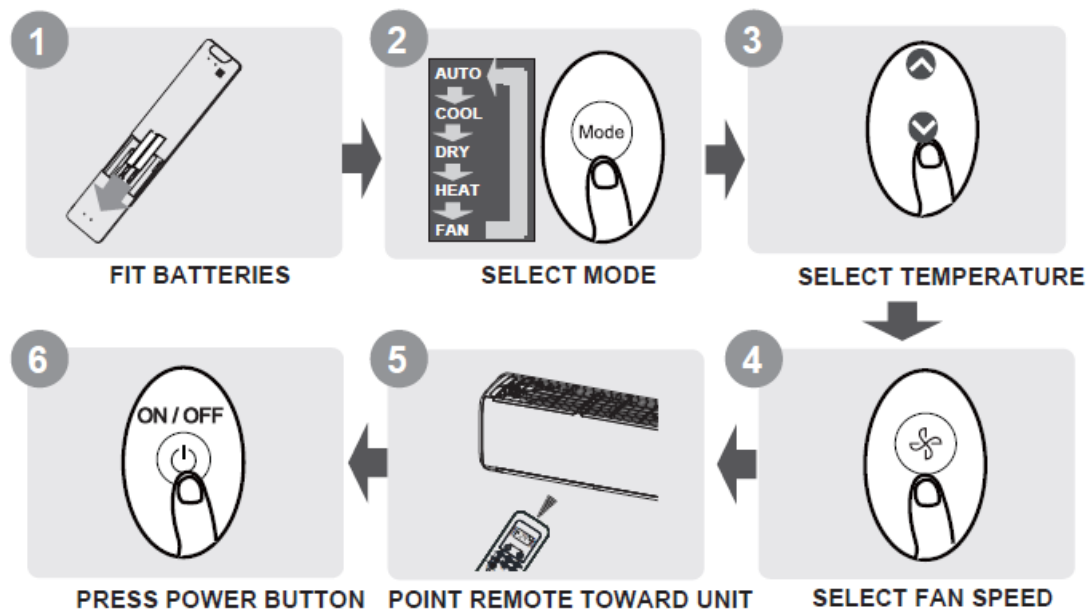
- Refer to the How to Use Basic Functions and How to Use Advanced Functions sections in the manual for detailed descriptions on how to operate your air conditioner.

Remote Controller Specifications

Model	RG10A(O2S)/BGEF, RG10A(O2S)/BGEFU1, RG10A1(O2S)/BGEF, RG10A2(O2S)/BGEFU1, RG10A2(O2S)/BGCEFU1, RG10A2(O2S)/BGCEF, RG10A10(O2S)/BGEF, RG10B(O2)/BGEF, RG10B1(O2)/BGEF, RG10B2(O2)/BGCEF, RG10B10(O2)/BGEF, RG10B10(O2)/BGCEF, RG10Y1(O2)/BGEF, RG10Y2(O2S)/BGEF
Rated Voltage	3.0V(Dry batteries R03/LR03x2)
Signal Receiving Range	8m
Environment	-5°C~60°C(23°F~140°F)

NOTE: For models of RG10Y1 (D2)/BGEF, RG10Y2(D2S)/BGEF, If the unit is turned off under COOL, AUTO or DRY mode with the set temperature less than 24 C, the set temperature will be automatically set to 24 C when you turn on the unit again. If the unit is turned off under HEAT mode with the set temperature more than 24 C, the set temperature will be automatically set to 24 C when you turn on the unit again.

Quick Start Guide



NOT SURE WHAT A FUNCTION DOES?

Refer to the How to Use Basic Functions and How to Use Advanced Functions sections of this manual for a detailed description of how to use your air conditioner.

SPECIAL NOTE

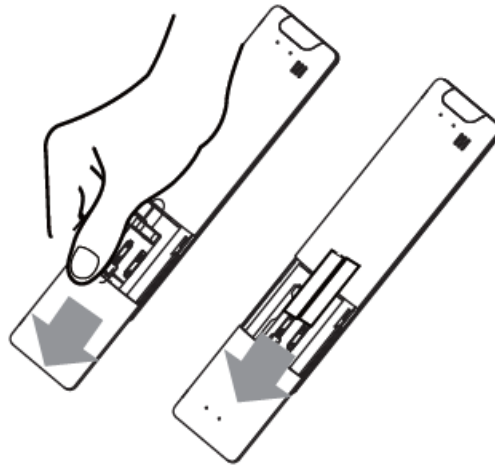
- Button designs on your unit may differ slightly from the example shown.
- If the indoor unit does not have a particular function, pressing that functions button on the remote control will have no effect.
- When there are wide differences between Remote controller Manual and USERS MANUAL on function description, the description of USERS MANUAL shall prevail.

Handling the Remote Controller

Inserting and Replacing Batteries

Your air conditioning unit may come with two batteries(some units). Put the batteries in the remote control before use.

1. Slide the back cover from the remote control downward, exposing the battery compartment.
2. Insert the batteries, paying attention to match up the (+) and (-) ends of the batteries with the symbols inside the battery compartment.
3. Slide the battery cover back into place.



BATTERY NOTES

For optimum product performance

- Do not mix old and new batteries, or batteries of different types.
- Do not leave batteries in the remote control if you don't plan on using the device for more than 2 months.

BATTERY DISPOSAL

Do not dispose of batteries as unsorted municipal waste. Refer to local laws for proper disposal of batteries.

TIPS FOR USING REMOTE CONTROL

- The remote control must be used within 8 meters of the unit.
- The unit will beep when remote signal is received.
- Curtains, other materials and direct sunlight can interfere with the infrared signal receiver. Remove batteries if the remote will not be used more than 2 months.

NOTES FOR USING REMOTE CONTROL

The device could comply with the local national regulations.

- In Canada, it should comply with CAN ICES-3(B)/NMB-3(B).
- In USA, this device complies with part 15 of the FCC Rules. Operation is subject to the following two conditions:

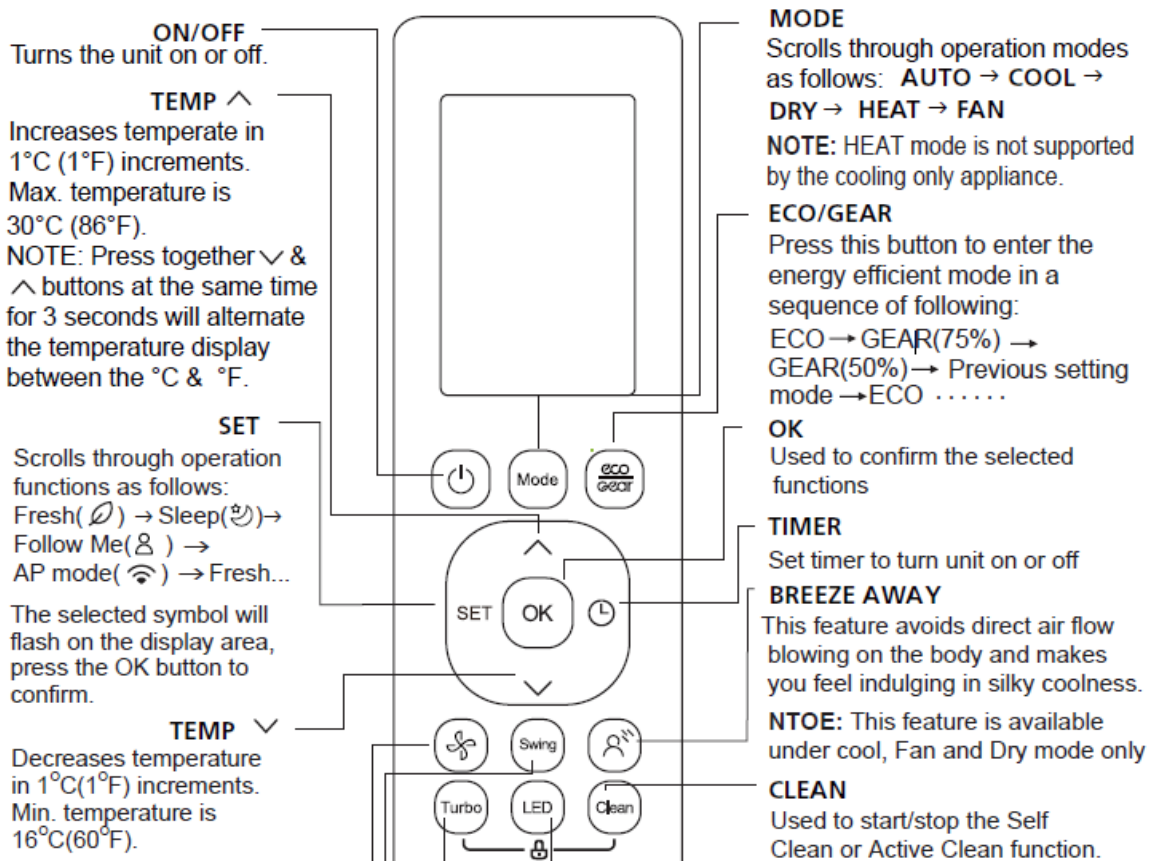
1. This device may not cause harmful interference, and
2. this device must accept any interference received, including interference that may cause undesired operation.

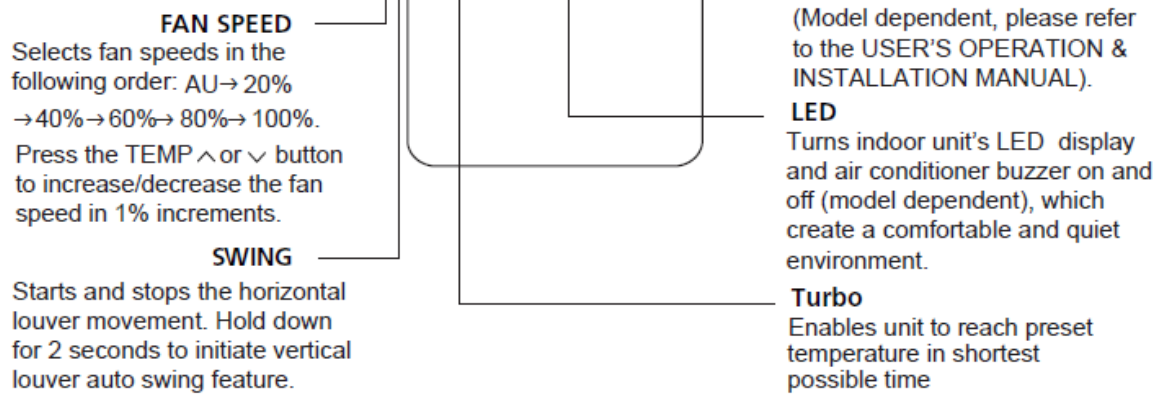
This equipment has been tested and found to comply with the limits for a Class B digital device, pursuant to part 15 of the FCC Rules. These limits are designed to provide reasonable protection against harmful interference in a residential installation. This equipment generates, uses and can radiate radio frequency energy and, if not installed and used in accordance with the instructions, may cause harmful interference to radio communications. However, there is no guarantee that interference will not occur in a particular installation. If this equipment does cause harmful interference to radio or television reception, which can be determined by turning the equipment off and on, the user is encouraged to try to correct the interference by one or more of the following measures

- Reorient or relocate the receiving antenna. Increase the separation between the equipment and receiver.
- Connect the equipment into an outlet on a circuit different from that to which the receiver is connected.
- Consult the dealer or an experienced radio/TV technician for help.
- Changes or modifications not approved by the party responsible for compliance could void users authority to operate the equipment.

Buttons and Functions

Before you begin using your new air conditioner, make sure to familiarize yourself with its remote control. The following is a brief introduction to the remote control itself. For instructions on how to operate your air conditioner, refer to the How to Use Basic Functions section of this manual.

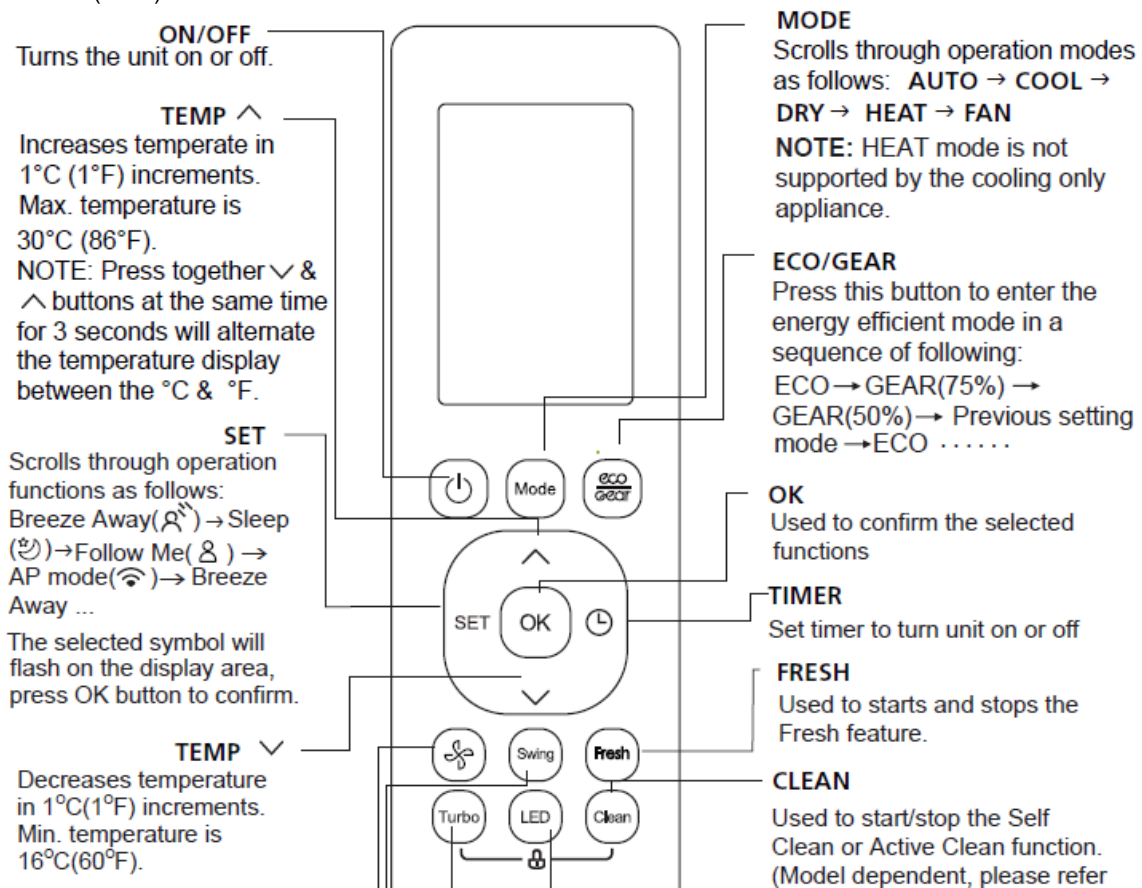


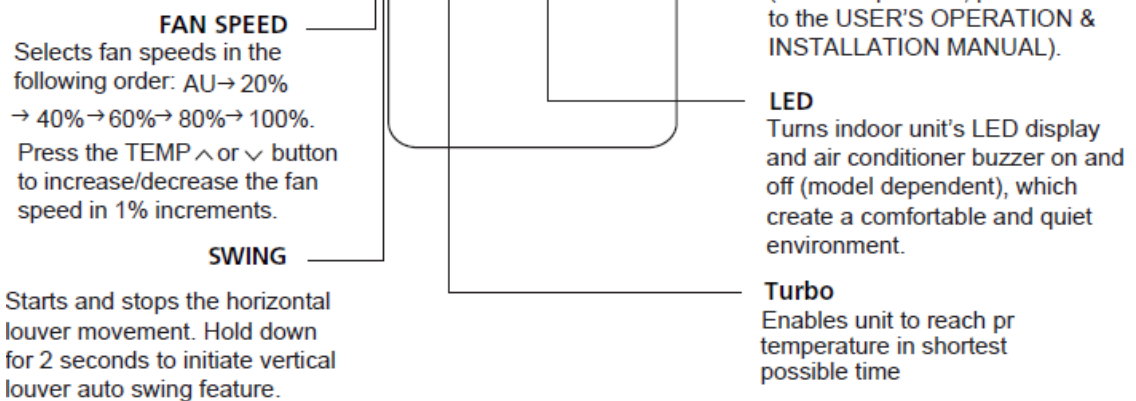


Model

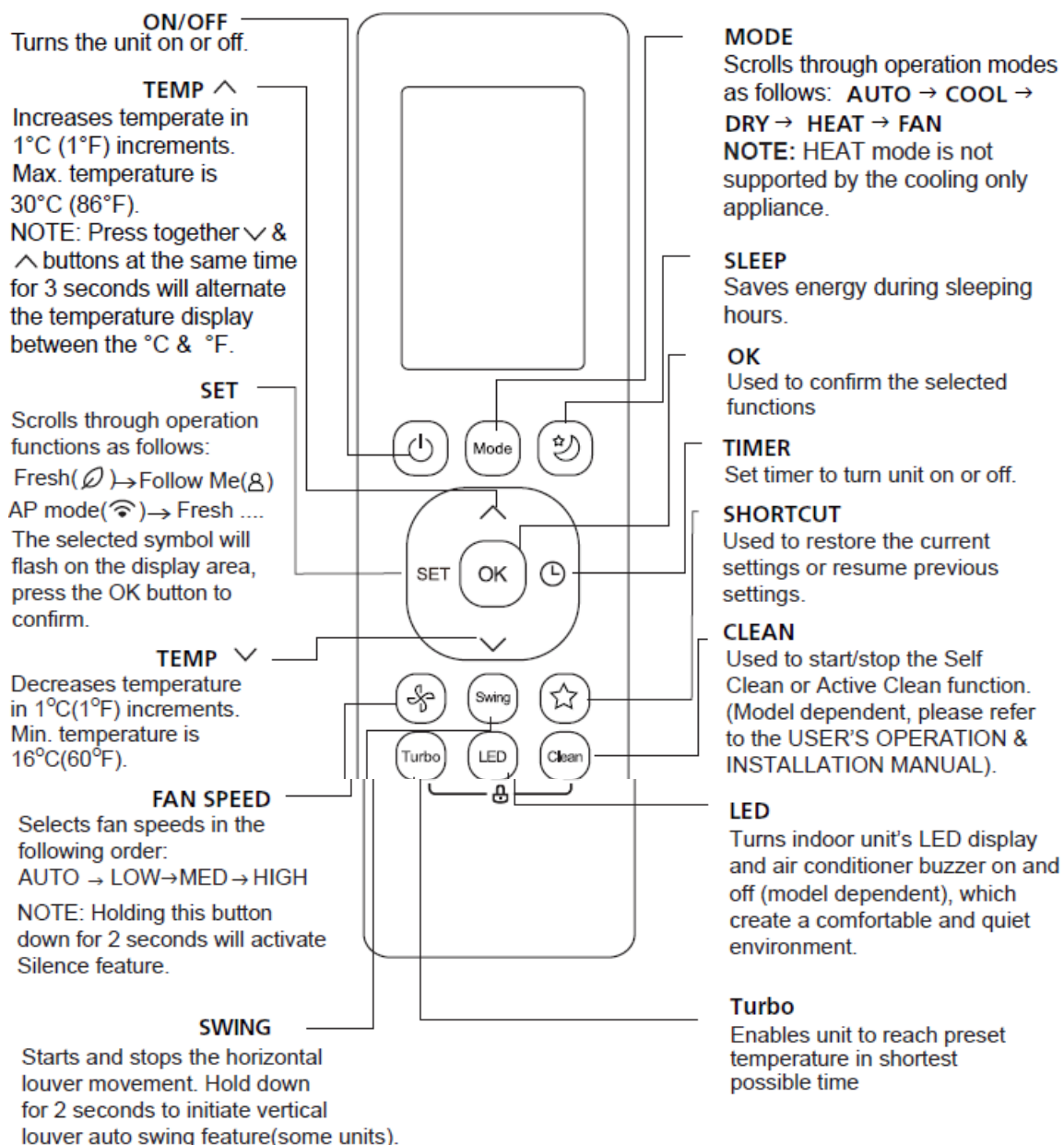
- RG10A2(D2S)/BGEFU1, RG10Y2(D2S)/BGEF O O
- RG10A10(D2S)/BGEF(20-28 C/68-82 F)
- RG10A(D2S)/BGEF & RG10A(D2S)/BGEFU1(Fresh feature is not available)
- RG10A2(D2S)/BGCEFU1 & RG10A2(D2S)/BGCEF (Cooling only models, AUTO mode and HEAT mode are not available)

Model: RG10A1(D2S)/BGEF





Model: RG10A1(D2S)/BGEF

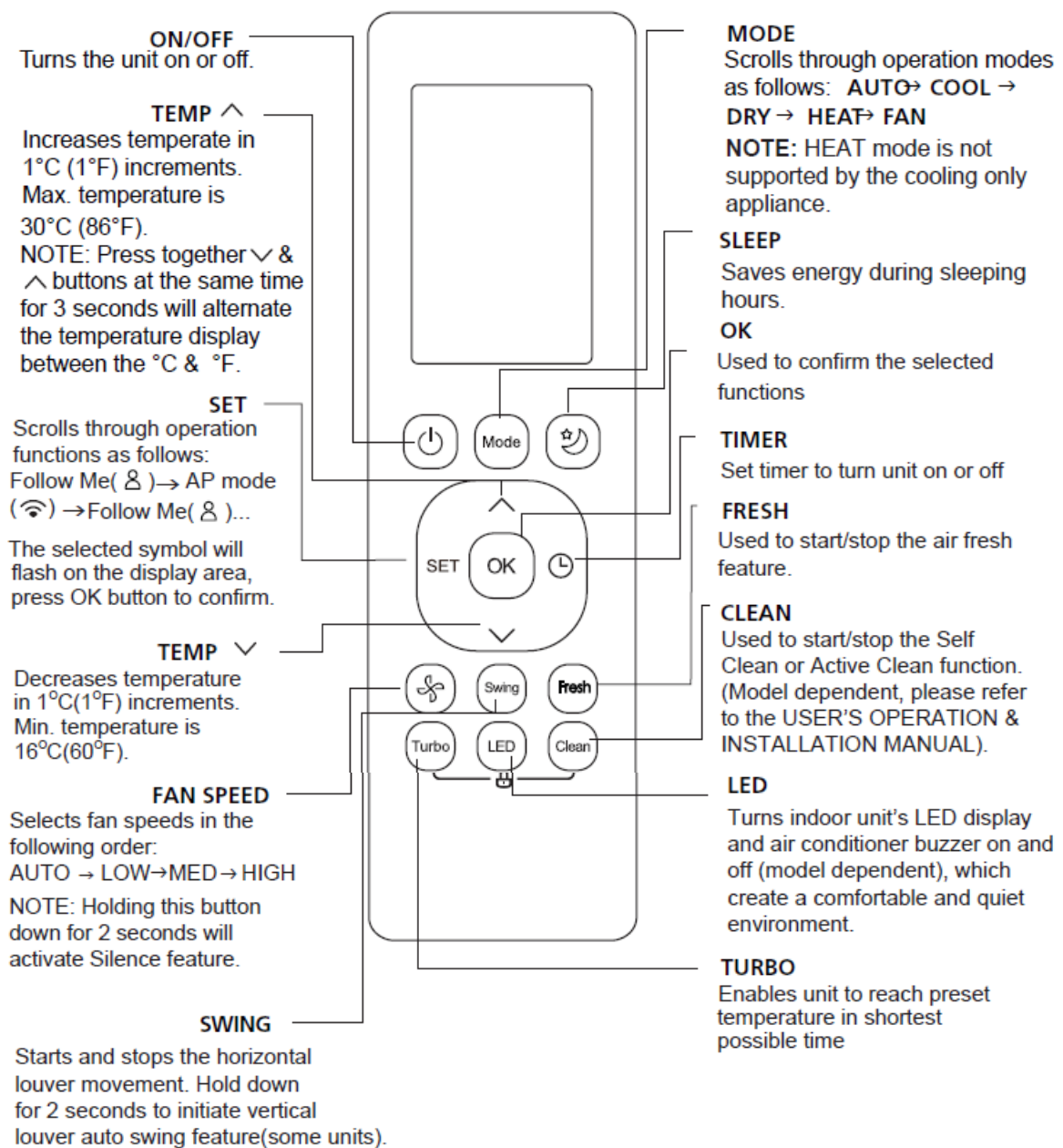


Model

- RG10B(D2)/BGEF(Fresh feature is not available)
- O O RG10B10(D2)/BGEF & RG10B10(D2)/BGCEF(20-28 C/68-82 F)
- RG10B2(D2)/BGCEF & RG10B10(D2)/BGCEF (Cooling only model,
- AUTO mode and HEAT mode are not available)

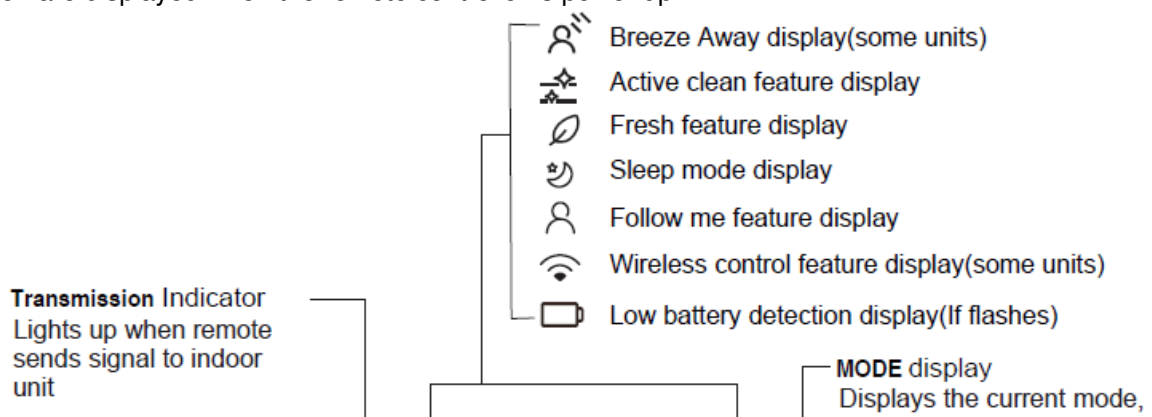
- RG10Y1(D2)/BGEF

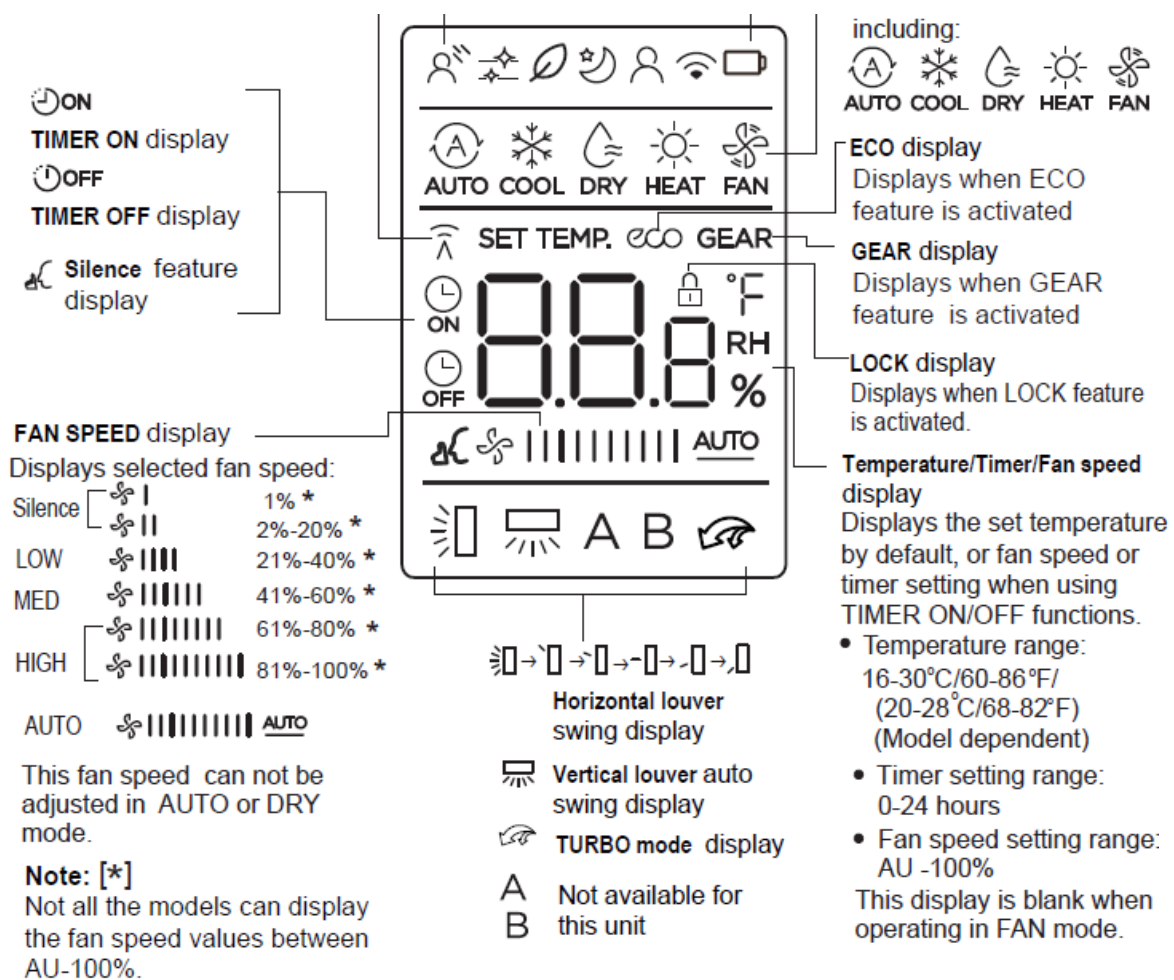
Model: RG10B1(D2)/BGEF



Remote Screen Indicators

Information are displayed when the remote controller is power up.





Note

All indicators shown in the figure are for the purpose of clear presentation. But during the actual operation, only the relative function signs are shown on the display window.

How to Use Basic Functions

ATTENTION Before operation, please ensure the unit is plugged in and power is available.

AUTO Mode

- Select AUTO mode
- Set your desired temperature
- Turn on the air conditioner



NOTE

1. In AUTO mode, the unit will automatically select the COOL, FAN, or HEAT function based on the set temperature.
2. In AUTO mode, fan speed can not be set.

COOL or HEAT Mode

- Select COOL/HEAT mode
- Set the temperature
- Set the fan speed
- Turn on the air conditioner



DRY Mode

- Select DRY mode
- Set your desired temperature
- Turn on the air conditioner



NOTE: In DRY mode, fan speed can not be set since it has already been automatically controlled.

FAN Mode

- Select FAN mode
- Set the fan speed
- Turn on the air conditioner



NOTE: In FAN mode, you cant set the temperature. As a result , no temperature displays in remote screen.

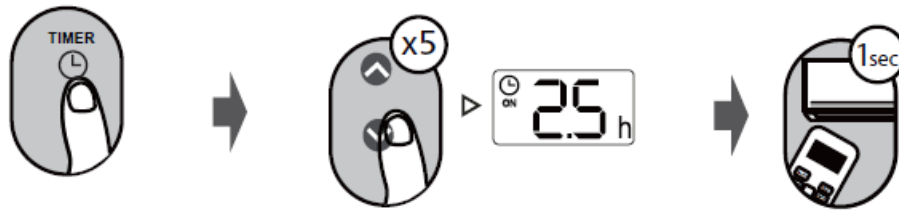
Setting the TIMER

TIMER ON/OFF – Set the amount of time after which the unit will automatically turn on/off.

TIMER ON setting

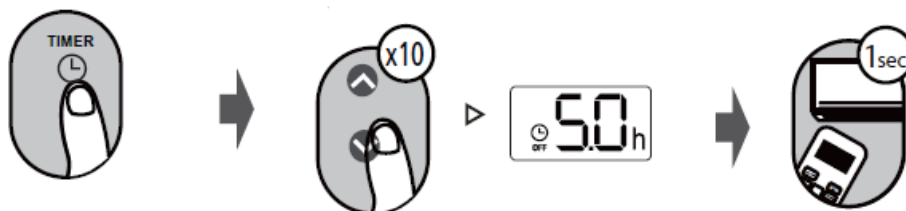
- Press TIMER button to initiate the ON time sequence.
- Press Temp. up or down button for for multiple times to set the desired time to turn on the unit.

- Point remote to unit and wait 1sec, the TIMER ON will be activated.



TIMER OFF setting

- Press TIMER button to initiate the OFF time sequence.
- Press Temp. up or down button for multiple times to set the desired time to turn off the unit.
- Point remote to unit and wait 1sec, the TIMER OFF will be activated.

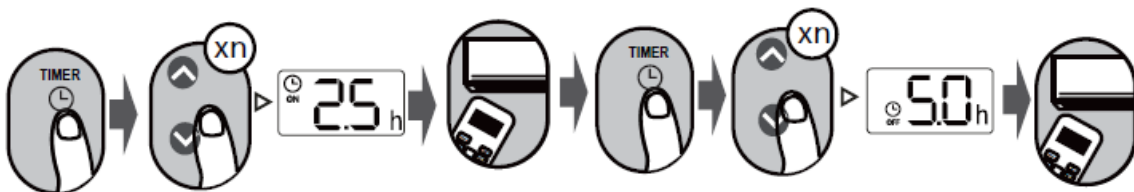


NOTE

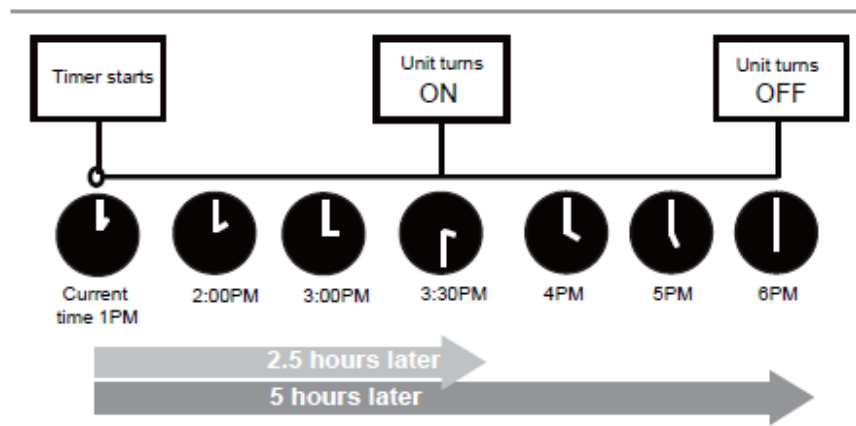
1. When setting the TIMER ON or TIMER OFF, the time will increase by 30 minutes increments with each press, up to 10 hours. After 10 hours and up to 24, it will increase in 1 hour increments. (For example, press 5 times to get 2.5h, and press 10 times to get 5h,) The timer will revert to 0.0 after 24.
2. Cancel either function by setting its timer to 0.0h.

TIMER ON & OFF setting(example)

Keep in mind that the time periods you set for both functions refer to hours after the current time.



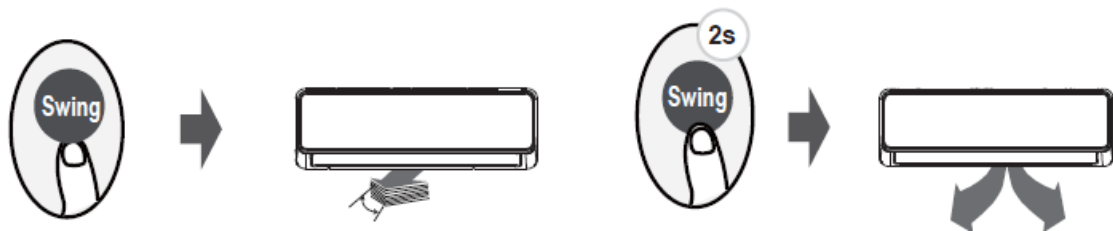
Example: If current timer is 1:00PM, to set the timer as above steps, the unit will turn on 2.5h later (3:30PM) and turn off at 6:00PM.



How to Use Advanced Functions

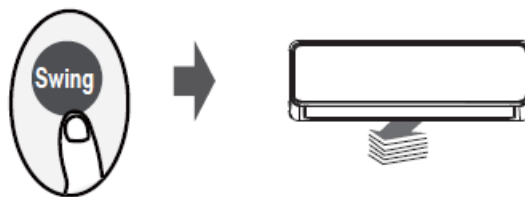
Swing function

Press Swing button



- The horizontal louver will swing up and down automatically when pressing Swing button. Press again to make it stop.
- Keep pressing this button more than 2 seconds, the vertical louver swing function is activated. (Model dependent)
- If continue to press the SWING button, five different airflow directions can be set. The louver can be move at a certain range each time you press the button. Press the button until the direction you prefer is reached.

Airflow direction



NOTE: When the unit is off, press and hold MODE and SWING buttons together for one second, the louver will open for a certain angle, which makes it very convenient for cleaning. Press and hold MODE and SWING buttons together for one second to reset the louver(Model dependent).

LED DISPLAY

- Press LED button



- Press this button to turn on and turn off the display on the indoor unit.
- Press this button more than 5 seconds(some units)



- Keep pressing this button more than 5 seconds, the indoor unit will display the actual room temperature. Press more than 5 seconds again will revert back to display the setting temperature.

ECO/GEAR function

Press this button to enter the energy efficient mode in a sequence of following: ECO → GEAR → GEAR → Previous setting mode

Note: This function is only available under COOL mode.



ECO operation

Under cooling mode, press this button, the remote controller will adjust the temperature automatically to 24 C/75 F, fan speed of Auto to save energy (only when the set temperature is less than 24 C/75 F). If the set temperature is above 24 C/75 F, press the ECO button, the fan speed will change to Auto, the set temperature will remain unchanged.

NOTE

Pressing the ECO/GEAR button, or modifying the mode or adjusting the set temperature to less Other 24 C/75 F will stop ECO operation.

Under ECO operation, the set temperature should be 24 C/75 F or above, it may result into insufficient cooling. If you feel uncomfortable, just press the ECO button again to stop it.

GEAR operation

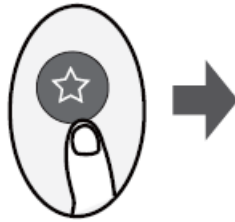
Press the ECO/GEAR button to enter the GEAR operation as following:

- (up to 75% electrical energy consumption)
- (up to 50% electrical energy consumption)
- Previous setting mode.

Under GEAR operation, the display on the remote controller will alternate between electrical energy consumption and set temperature.

SHORTCUT function

Press SHORTCUT button(some units)



- Push this button when remote controller is on, the system will automatically revert back to the previous settings including operating mode, setting temperature, fan speed level and sleep feature (if activated).
- If pushing more than 2 seconds, the system will automatically restore the current operation settings including operating mode, setting temperature, fan speed level and sleep feature (if activated).

Silence function



- Keep pressing Fan button for more than 2 seconds to activate/disable Silence function(some units).
- Due to low frequency operation of compressor, it may result in insufficient cooling and heating capacity. Press ON/OFF, Mode, Sleep, Turbo or Clean button while operating will cancel silence function.

FP function

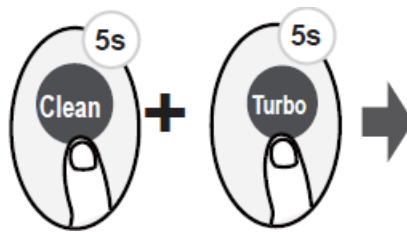
The unit will operate at high fan speed (while compressor on) with temperature automatically set to 8 C/46 F.



Note: This function is for heat pump air conditioner only.

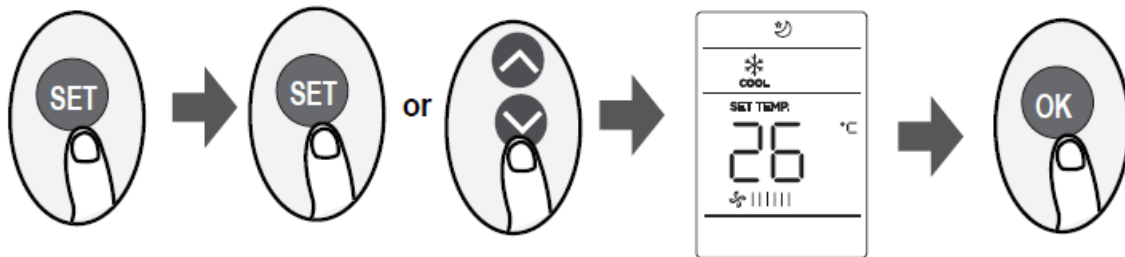
- Press this button 2 times during one second under HEAT Mode and setting temperature of 16 C/60 F or 20 C/68 F(for models of RG10A10(D2S)/BGEF, RG10B10(D2)/BGEF and RG10B10(D2)/BGCEF) to activate FP function.
- Press On/Off, Sleep, Mode, Fan and Temp. button while operating will cancel this function.

LOCK function



Press together Clean button and Turbo button at the same time more than 5 seconds to activate Lock function. All buttons will not response except pressing these two buttons for two seconds again to disable locking.

SET function



- Press the SET button to enter the function setting, then press SET button or TEMP ∇ or TEMP \wedge button to select the desired function. The selected symbol will flash on the display area, press the OK button to confirm.
- To cancel the selected function, just perform the same procedures as above.
- Press the SET button to scroll through operation functions as follows: Breeze A *
 $\ast(\text{⌘}) \rightarrow \text{Fresh}^*(\text{⌘}) \rightarrow \text{Sleep}(\text{⌘}) \rightarrow \text{Follow Me}(\text{⌘}) \rightarrow \text{AP mode}(\text{⌘})$
- If your remote controller has Breeze Away button, Fresh button or Sleep button, you can not use the SET button to select the Breeze Away, Fresh or Sleep feature.

Breeze Away function(⌘)(some units)

This feature avoids direct air flow blowing on the body and makes you feel indulging in silky coolness.

NOTE: This feature is available under cool, Fan and Dry mode only.

FRESH function(⌘) (some units)

When the FRESH function is initiated, the ion generator is energized and will help to purify the air in the room.

Sleep function(⌘)

The SLEEP function is used to decrease energy use while you sleep (and don't need the same temperature settings to stay comfortable). This function can only be activated via remote control.

For the detail, see sleep operation in USER'S MANUAL.

Note: The SLEEP function is not available in FAN or DRY mode.

Follow me function(⌘)

The FOLLOW ME function enables the remote control to measure the temperature at its current location and send this signal to the air conditioner every 3 minutes interval. When using AUTO, COOL or HEAT modes, measuring ambient temperature from the remote control (instead of from the indoor unit itself) will enable the air conditioner to optimize the temperature around you and ensure maximum comfort.

NOTE: Press and hold Turbo button for seven seconds to start/stop memory feature of Follow Me function.


- If the memory feature is activated, On displays for 3 seconds on the screen.
- If the memory feature is stopped, OF displays for 3 seconds on the screen.
- While the memory feature is activated, press the ON/OFF button, shift the mode or power failure will not cancel the Follow me function.

AP function()(some units)

Choose AP mode to do wireless network configuration. For some units, it doesn't work by pressing the SET button. To enter the AP mode, continuously press the LED button seven times in 10 seconds.

The design and specifications are subject to change without prior notice for product improvement. Consult with the sales agency or manufacturer for details.

Documents / Resources

	<p>MaxiCool RG10(D2S) Remote Controller [pdf] Owner's Manual RG10 D2S, RG10Y1 D2 -BGEF, RG10Y2 D2S -BGEF, RG10 D2S Remote Controller, RG10 D2 S, Remote Controller, Controller</p>
--	--

References

- [User Manual](#)

[Manuals+](#), [Privacy Policy](#)

This website is an independent publication and is neither affiliated with nor endorsed by any of the trademark owners. The "Bluetooth®" word mark and logos are registered trademarks owned by Bluetooth SIG, Inc. The "Wi-Fi®" word mark and logos are registered trademarks owned by the Wi-Fi Alliance. Any use of these marks on this website does not imply any affiliation with or endorsement.