



MAXHUB RC01 Remote Control User Manual

[Home](#) » [MAXHUB](#) » MAXHUB RC01 Remote Control User Manual 

Contents

- [1 MAXHUB RC01 Remote Control](#)
- [2 Electric Capability](#)
- [3 Environmental](#)
- [4 key introduction and code value](#)
- [5 Function Description](#)
- [6 Remote control pairing](#)
- [7 Mouse function description](#)
- [8 Others](#)
- [9 product structure drawing](#)
- [10 Packing](#)
- [11 FCC STATEMENT](#)
- [12 Documents / Resources](#)
- [13 Related Posts](#)

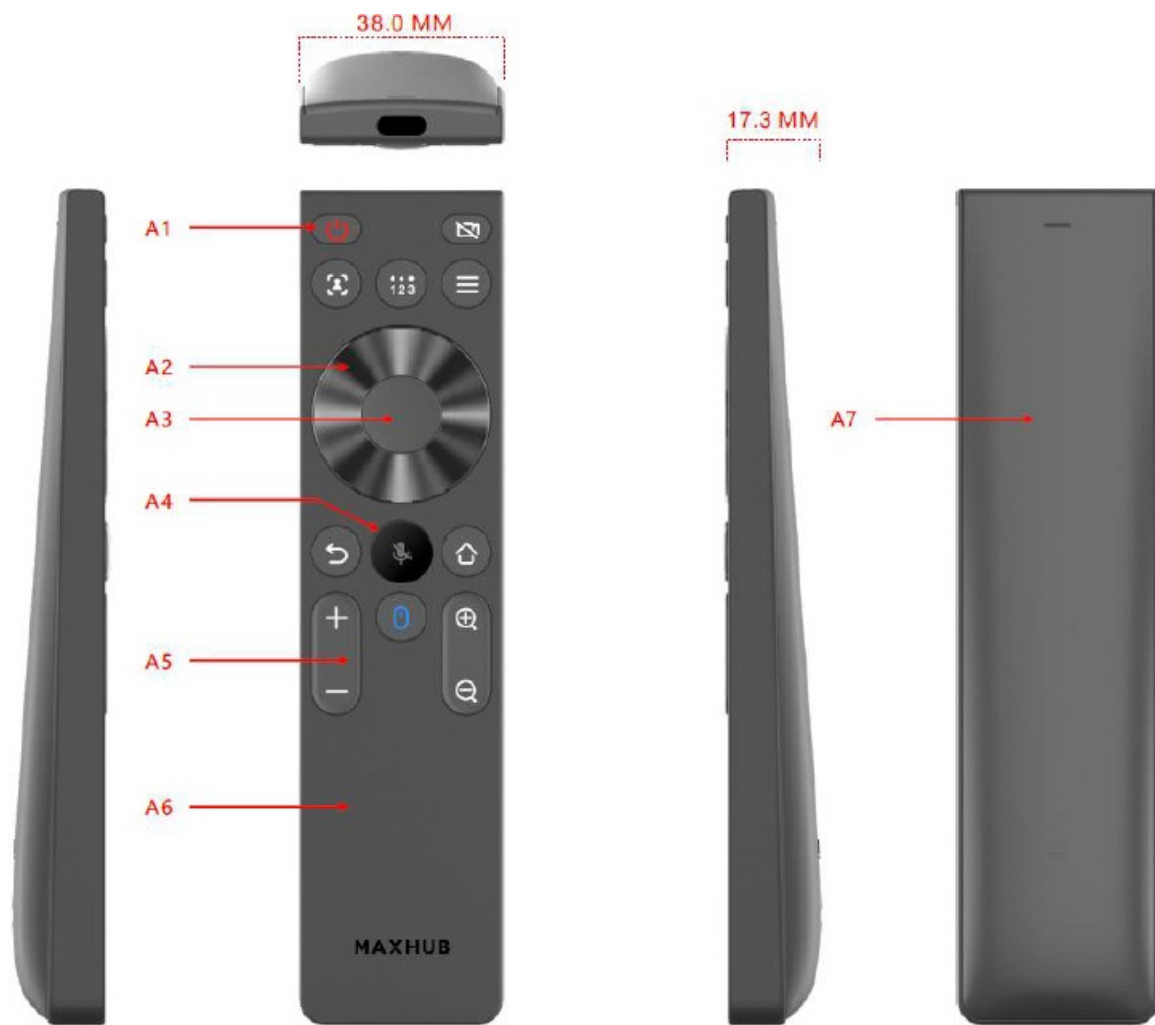
MAXHUB

MAXHUB RC01 Remote Control



Product name RC01

ID



Electric Capability

N0	Item	Test Requirements
2.0	IC IC Mcu	RTL8752CJF
2.1	remote control model	RC01
2.2	Carrier frequency	2402— 2480MHZ
2.3	Working Voltage	DC 3v
2.4	Static Current	6uA 500uA

2.5	Working Current	<30mA
2.6	RF distance Working Voltage(3V)	IR>8m IR 15°>6m RF>10m
2.7	Mouse operating distance	>10m
2.8	Supported Operating Systems	Android4.3 or above
2.9	Code Table	Refer to the Code Table
2.1 0	Schematic Diagram	Refer to Schematic Diagram
2.1 1	Battery life	200times/day(0.5seconds/time), Battery life is around half year
2.1 2	RF frequency range & modulation	2402~2480MHZ GFSK
2.1 3	RF transmission power	-20dbm~10dbm
2.1 4	Carrier frequency offset, drift	drift <±50KHz Carrier frequency offset <20Khz/50us
2.1 5	Antenna gain	>-0.98dB

2.1 6	Agreement	BT 4.0 BLE1
2.1 7	Actual performance test	No Failure in each key Operation














Environmental

N o.	Item	
3. 1	Operating Temperature	The RCU shall be capable of operating in an ambient temperature range of 0°C to +40°C.
3. 2	Operating Humidity	The device shall be capable of operating in a relative humidity range of 8% to 90%, non-condensing.

3. 3	Storage Temperature	The RCU shall be capable of operating after being stored in an ambient temperature range of -40° to +70°C.
3. 4	Storage Humidity	The RCU shall be capable of operating after being stored in a relative humidity range of 5% to 90% non-condensing.
3. 5	Test temperature	-10 °C ~ 50 °C

key introduction and code value

1. If Bluetooth is not connected or disconnected, infrared is emitted by default.
2. Infrared code format: NEC format.
3. Infrared user code: 0x21DE
4. Bluetooth key transmission protocol: BT4.2BLE

Num.	Func_key	Usage Page	Usage ID	Linux Code	IR CODE (0x21DE)
1	Power 	NA		KEY_POWER	0x01
2	VOL+ 	0x0C	0xe9	KEY_VOLUMEUP	0x44
3	VOL- 	0x0C	0xea	KEY_VOLUMEDOWN	0x45
4	up	0x0C	0x42	KEY_UP	0x56
5	down	0x0C	0x43	KEY_DOWN	0x50
6	left	0x0C	0x44	KEY_LEFT	0x47
7	right	0x0C	0x45	KEY_RIGHT	0x4B
8	OK	0x0C	0x84	KEY_ENTER	0x57
9		0x0C	0x224	KEY_BACK	0x4A
10		0x0C	0x223	KEY_HOME	0x59
11		0x07	0x95	KEY_MAXHUB_MINI_MIC_CTL	0x11
12		0x07	0x96	KEY_MAXHUB_MINI_ZOOM_PLUS	0x1B
13		0x07	0x97	KEY_MAXHUB_MINI_ZOOM_MINUS	0x0F
14		Do not send code value, short press to switch empty mouse switch function			0x0D
15	AutoFraming 	0x07	0x98	KEY_POUND	0x0C
16	Menu 	0x0C	0x40	KEY_MENU	0x46
17	Preset bit switching 	0x07	0x99	KEY_CVTE_CAM_POS	0x51
18	Turn off the camera 	0x07	0x9a	KEY_CVTE_HANGUP	0x09

Function Description

1. The Bluetooth status of the remote control is not connected, and all the keys of the remote control send infrared code value.
2. When the remote control has been paired with the equipment, but is not connected, the remote control initiates the back connection signal by any key, and initiates the active back connection operation with the current paired Videobar equipment.

3. When the remote control and Videobar device have been paired and connected, POWER only sends the infrared code value, not the Bluetooth code value. Other keys only send the Bluetooth code value

Remote control pairing

1. When Bluetooth is not paired (when there is no Bluetooth pairing record), press and hold the Back button +Home button on the remote control for 3 seconds at the same time, the remote control will send the infrared code value 0x0b once, and enter the paired broadcast mode. The broadcast time is 2 minutes. At the same time, the screen pops up the pairing operation prompt:



2. press the mouse button. If Bluetooth is not paired, the screen will pop up the pairing operation prompt, and then the infrared code value will be sent; If paired, is the normal mouse switch function.
3. When the remote control has been paired with the VedioBar device but is not connected, press any button of the remote control to initiate active connection back operation with the current paired VedioBar device.
4. After successful pairing, the screen will display a prompt icon indicating successful connection and close the prompt screen.



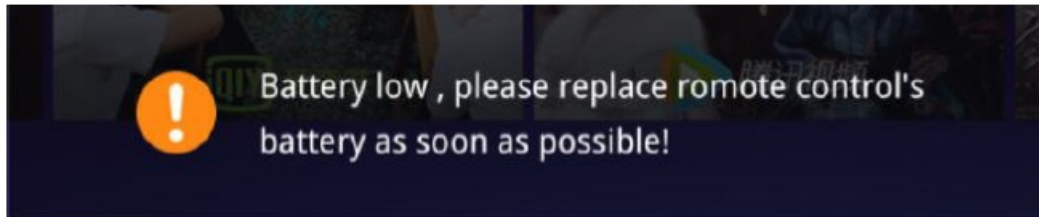
5. If the coding is still unsuccessful within 2 minutes, the remote control will automatically return to the original state.
6. When the Bluetooth is paired, press and hold the Back button +Home button on the remote control for 3 seconds, the remote control will clear the pairing information first, then send an infrared code value 0x0A, close the Bluetooth (no longer initiate pairing broadcast), and the UC terminal will clear the Bluetooth connection record at the same time.

Mouse function description

1. The empty mouse function is available only when Bluetooth is connected.
2. The cursor can move smoothly and accurately following the user's actions (whether it is circle drawing, horizontal movement, vertical movement, acceleration, deceleration, etc.) without unnecessary trajectory or delay.
3. When Bluetooth is connected, press the empty mouse button to open or close the empty mouse function. After opening the empty mouse function, press the OK key to send the left mouse button function.
4. After the empty mouse is opened, the sensor works normally when the remote control moves; When the

remote control is stationary, the sensor enters the low-power mode.

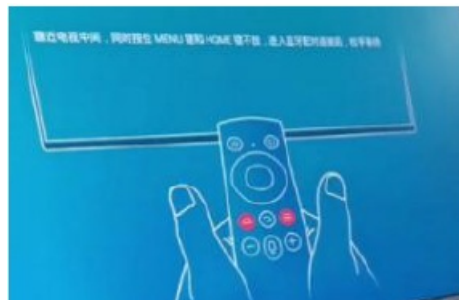
5. When the empty rat function is turned on, no operation is performed within 2 minutes, and the empty rat function is automatically turned off. The sensor goes to sleep. If the empty rat is needed, it needs to be turned on again.
6. When the Bluetooth connection to the empty mouse is turned on, the function of the empty mouse will be turned off by default.
7. When the empty mouse function is on, if you press the navigation button (up or down or so), the empty mouse function will be automatically closed and the navigation button will be responded to.
8. The power display of the remote control shows that: there is a reminder of the battery power on the interface of Bluetooth remote control connection setting. In addition, the current battery power will be checked every time the device is turned on. If the battery power is low, there will be a corresponding reminder:



9. Under the empty mouse, if you press the navigation button (up or down or so), the mouse function will be automatically cancelled to respond to the button navigation
10. To adjust the sensitivity, long press the confirm key for 2 seconds, and then press the volume +/- to adjust the sensitivity.

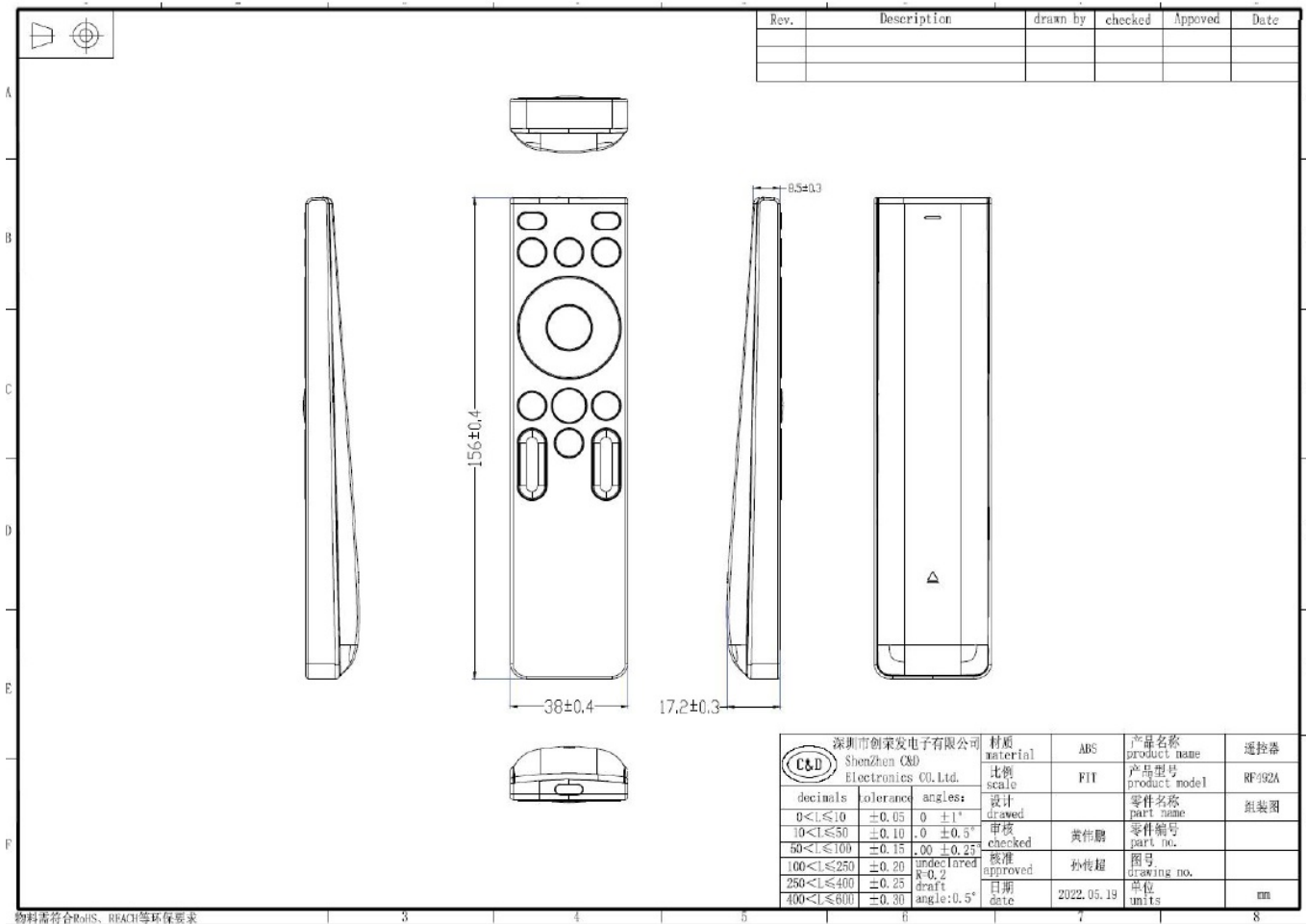
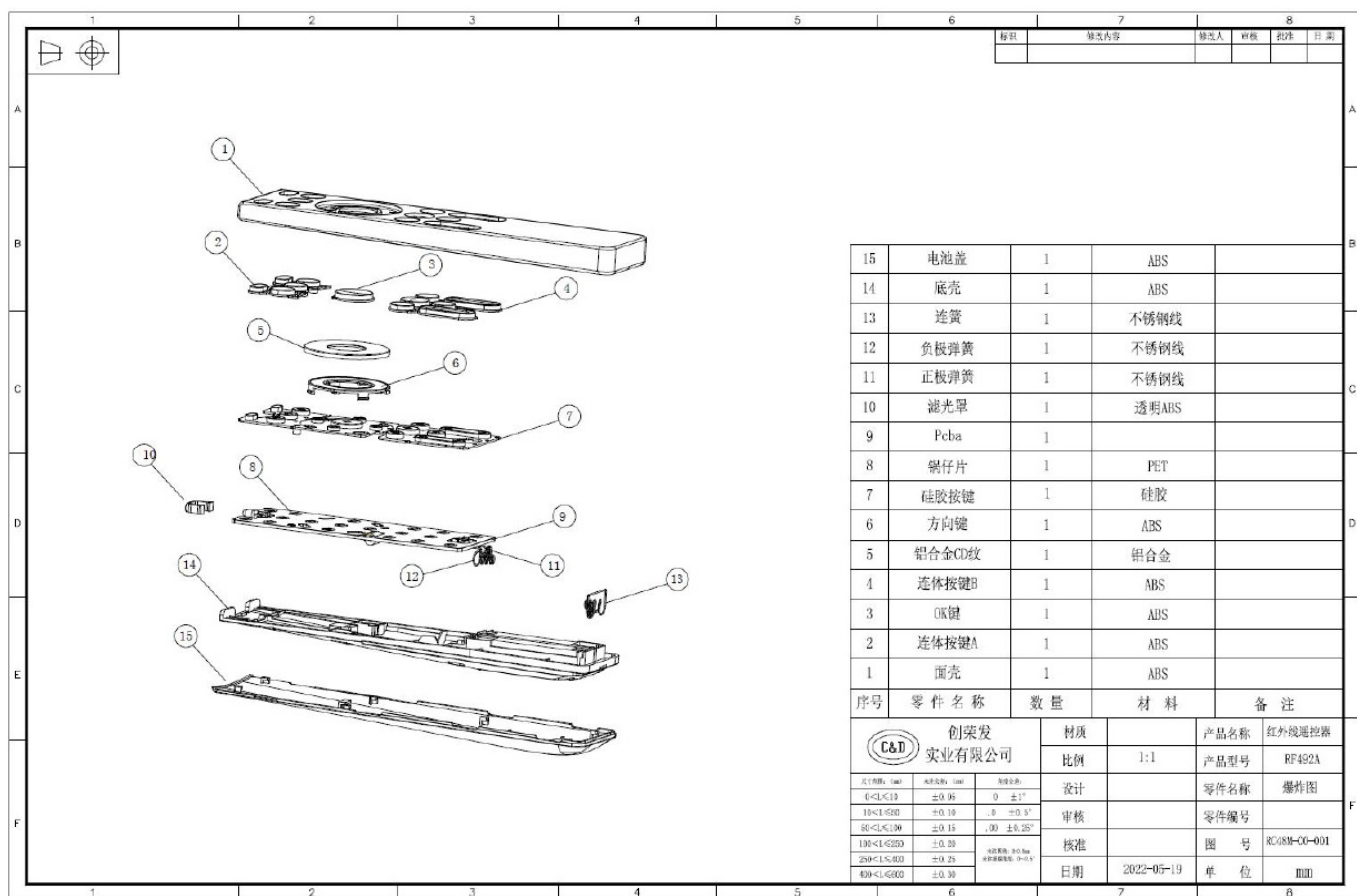
Others

1. Bluetooth is turned on by default after the first startup, and Bluetooth pairing is prompted.

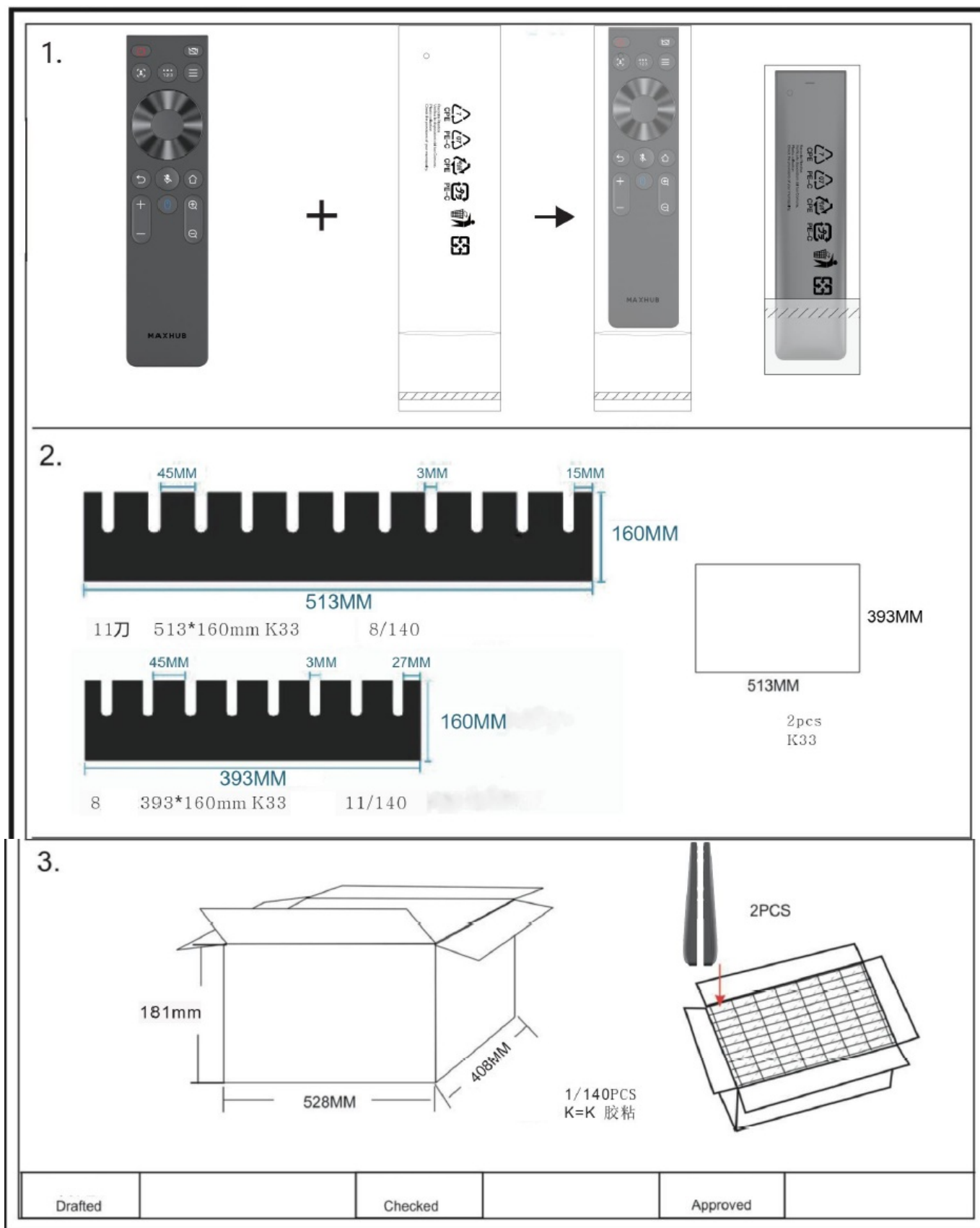


2. Host pairing triggered by the remote control can be triggered by mouse key (infrared code) or broadcast (provided that the host Bluetooth is turned on and in scanning state).

product structure drawing



Packing



FCC STATEMENT

Changes or modifications not expressly approved by the party responsible for compliance could void the user's authority to operate the equipment. This device complies with Part 15 of the FCC Rules. Operation is subject to the following two conditions:

1. this device may not cause harmful interference, and
2. this device must accept any interference received, including interference that may cause undesired operation.

This transmitter must not be co-located or operating in conjunction with any other antenna or transmitter.

Note: This equipment has been tested and found to comply with the limits for a Class B digital device, pursuant to Part 15 of the FCC Rules. These limits are designed to provide reasonable protection against harmful interference in a residential installation. This equipment generates, uses, and can radiate radio frequency energy, and if not installed and used in accordance with the instructions, may cause harmful interference to radio communications. However, there is no guarantee that interference will not occur in a particular installation. If this equipment does cause harmful interference to radio or television reception, which can be determined by turning the equipment off and on, the user is encouraged to try to correct the interference by one or more of the following measures:

- Reorient or relocate the receiving antenna.
- Increase the separation between the equipment and the receiver.
- Connect the equipment to an outlet on a circuit different from that to which the receiver is connected.
- Consult the dealer or an experienced radio/TV technician for help.

The device has been evaluated to meet the general RF exposure requirements. The device can be used in portable exposure conditions without restriction.

Documents / Resources

	<p>MAXHUB RC01 Remote Control [pdf] User Manual</p> <p>RC01, 2AFG6-RC01, 2AFG6RC01, RC01 Remote Control, Remote Control, Remote</p>
--	---