



MAXFREE K3 Foldable Touchscreen Mechanical Gaming Keyboard User Guide

[Home](#) » [MAXFREE](#) » MAXFREE K3 Foldable Touchscreen Mechanical Gaming Keyboard User Guide 



MAXFREE

K3 Foldable Touchscreen Mechanical Gaming Keyboard User Guide

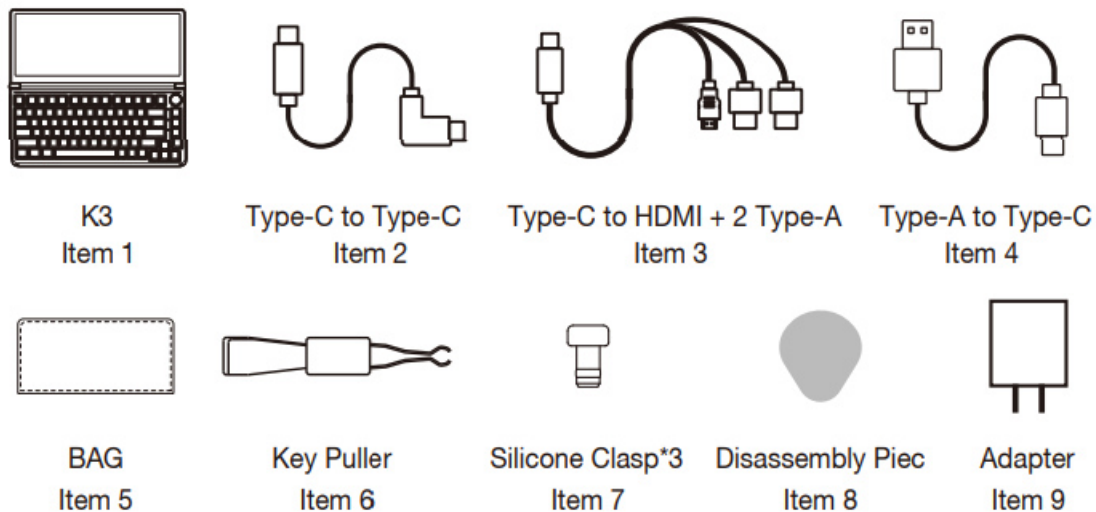
Contents

- [1 K3 Foldable Touchscreen Mechanical Gaming Keyboard](#)
- [2 Product Overview](#)
- [3 Installation](#)
- [4 Touch Settings](#)
- [5 Documents / Resources](#)
 - [5.1 References](#)

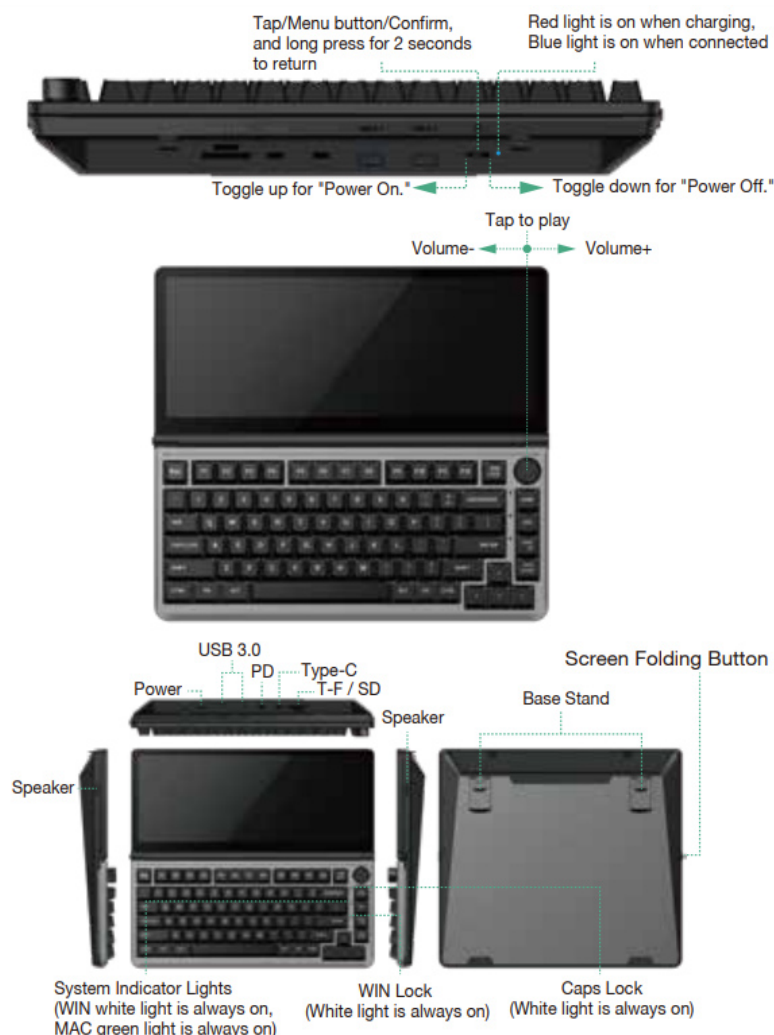
K3 Foldable Touchscreen Mechanical Gaming Keyboard

Foldable Touchscreen Mechanical Gaming Keyboard

Product Contents



Product Overview

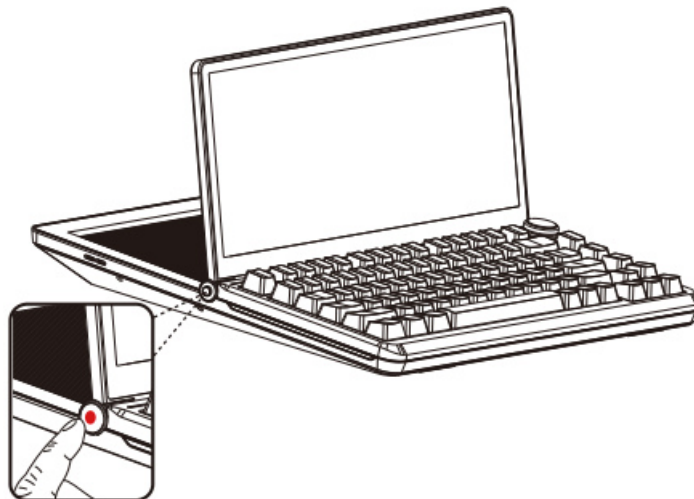


Installation

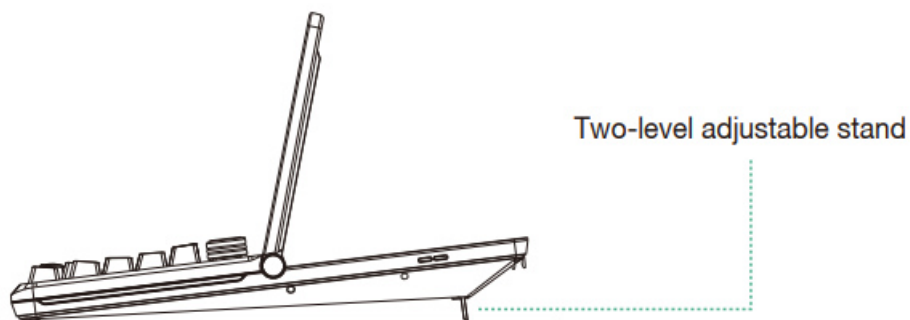
1. Method of Screen Angle Adjustment

- 1.1. Please hold the folding button to adjust the screen angle to the desired position, and then release the folding button to lock the screen angle.
- 1.2. When opening or closing the screen, make sure to press the folding button. Failure to do so may result in

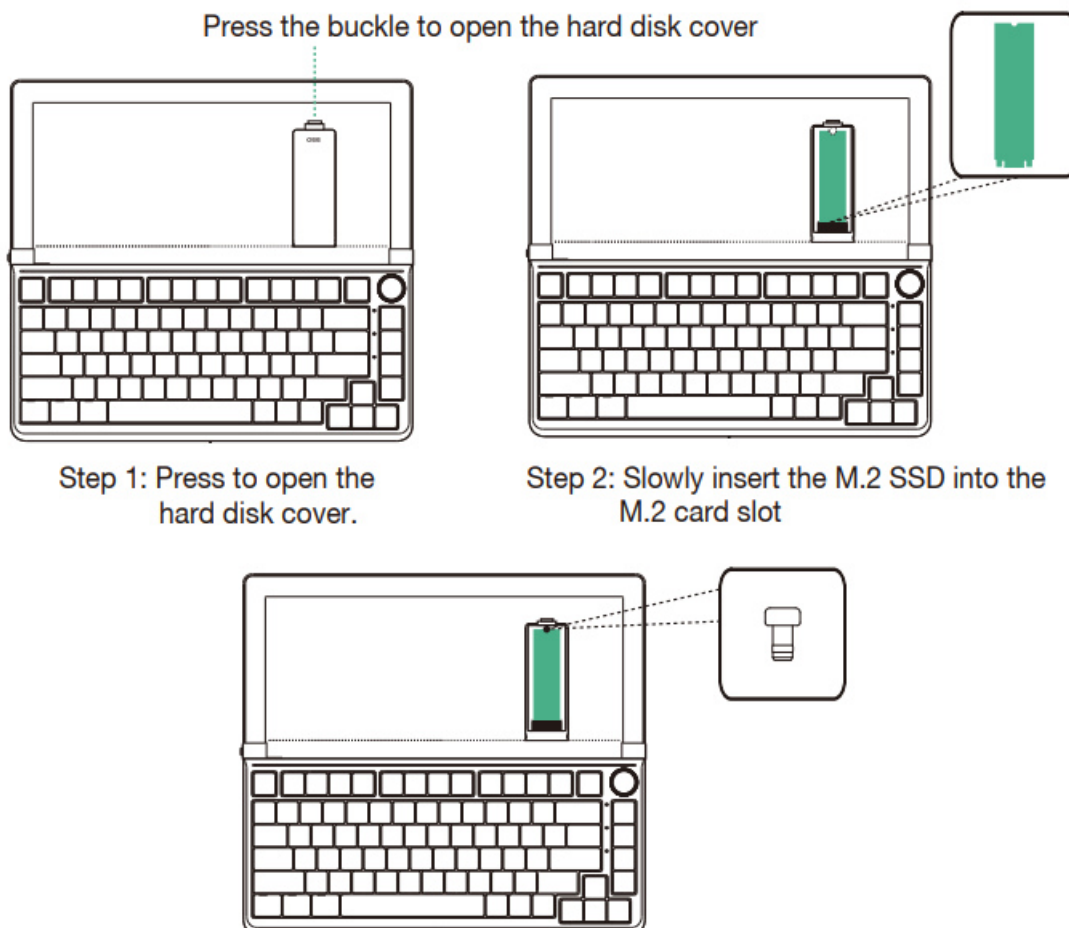
screen damage or a failed locking mechanism.



2. Open the Base Support Stand



3. M.2 SSD Installation



Step 3: Press the silicone clasp into the hole position, cover the hard disk cover and complete the installation.

Note:

1. Use the cable to connect the K3 to the computer. If the SSD is recognized, it indicates that the installation is complete.
2. When using a 3-in-1 cable, the transfer rate of USB3.0 and solid-state hard drive will be limited to USB2.0 speeds (12-480 Mbps).

Connection Methods

Step 1: Connect the K3 to the PC device using the Type-C port.



Method 1: If your laptop features a full-functioned Type-C port, simply connect the 3 to your laptop's Type-C port using a Type-C to Type-C cable. You will need items 1 and 2.

Method 2: If your laptop cannot provide 5V/2A power through the Type-C port, or if the display shows no signal or unstable signal after connecting, you will need to connect an external power adapter with a 5V/2A output to the PD port on the K3. You will need items 1 and 2, 4, 9.

Method 3: If your laptop has an HDMI port and the package includes a Type-C to HDMI+2 Type-A cable (item 3), simply connect the K3's Type-C port to your laptop's HDMI port. The black Type-A connector and red Type-A connector should be connected to the computer's Type-A ports. You will need items 1 and 3.

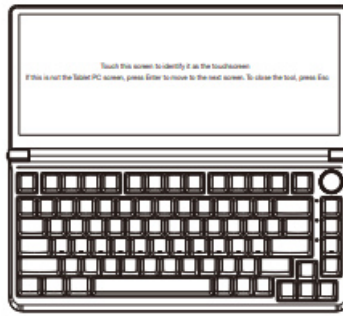
Method 4: If your laptop cannot provide 5V/2A power through the Type-A port or if the display shows no signal or unstable signal after connecting, you will need to connect an external power adapter with a 5V/2A output to the red Type-A port on the data cable. You will need items 1 and items 3, items 9.

Touch Settings

K3 is compatible with the majority of devices in the market, and you can touch the screen right away upon connection. In case the touch screen functionality isn't accessible, kindly consult the following configurations.

1. Click the Start Icon → Search Open Control Panel → Choose Hardware and Sound → Click Tablet Settings.
2. .Tablet PC settings → Click to display → Click to set.
3. he following text is displayed on the main screen of the PC.

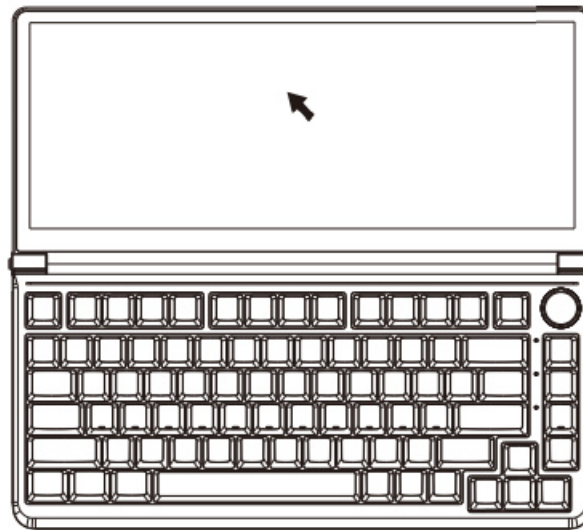
Touch this screen with one finger to recognize it as the touchscreen. If this isn't the Tablet PC screen, press Enter to proceed to the next screen. To exit the operation, press Esc.
Press ENTER to go to the next screen



Tap to complete the settings

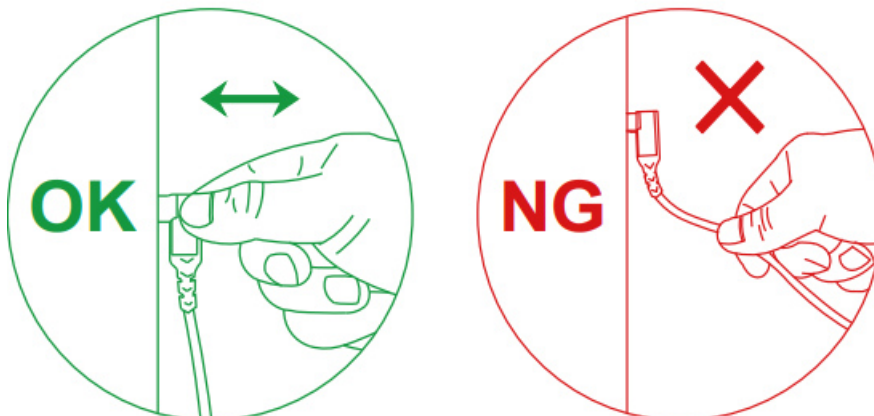
Mac System Touch Settings

1. Move the mouse cursor to the screen and touch the coordinate point to complete the setup.



Tips for Use


Please refer to the images below for guidance on inserting or disconnecting the data cable to prevent any damage.



For more detailed information, please refer to the product manual.



Documents / Resources

| | |
|---|--|
|  | <p>MAXFREE K3 Foldable Touchscreen Mechanical Gaming Keyboard [pdf] User Guide K3 Foldable Touchscreen Mechanical Gaming Keyboard, K3, Foldable Touchscreen Mechanical Gaming Keyboard, Touchscreen Mechanical Gaming Keyboard, Mechanical Gamin g Keyboard, Gaming Keyboard, Keyboard</p> |
|---|--|

References

- [User Manual](#)