



maxell MSS-DWS1 Smart Door-Window Sensor Wifi Entry Detector User Manual

[Home](#) » [Maxell](#) » maxell MSS-DWS1 Smart Door-Window Sensor Wifi Entry Detector User Manual 

Contents

- [1 maxell MSS-DWS1 Smart Door-Window Sensor Wifi Entry Detector](#)
- [2 PRODUCT REVIEW](#)
- [3 PRODUCT FEATURES](#)
- [4 PRODUCT DESCRIPTION](#)
- [5 PRODUCT SPECIFICATIONS](#)
- [6 INSTALL APP AND REGISTER AN ACCOUNT](#)
- [7 ADD AND REMOVE THE DEVICE IN YOUR APP ACCOUNT](#)
- [8 PRODUCT INSTALLATION AND CHECK THE WORKING STATE](#)
- [9 FCC NOTICE](#)
- [10 FAQ](#)
- [11 Documents / Resources](#)
- [12 Related Posts](#)

maxell

maxell MSS-DWS1 Smart Door-Window Sensor Wifi Entry Detector



PRODUCT REVIEW

This Door/Window Sensor is a Wi-Fi, battery-powered reed sensor, including the device part and magnet part. Working with APP together in your mobile phone, once the state change (close or open) is detected, the device will wake up the Wi-Fi connection to the Wi-Fi router, send an alarm signal to your mobile phone via Wi-Fi network, in the case that the APP internet is available locally or remotely. The alarm is selectable as a notification on your mobile phone with bar display, banner with tone, vibration based on the APP Notification setting on your Mobile Phone. There is around a 5-second delay from the state changes to notification on your mobile phone depending on the internet connection quality.

- This device is working as a scene to trigger other device actions that are compatible in the same apps such as to turn on/off plug and bulb.
- This device can be installed on Door, Window and Drawer, and one part is the frame and the other part can be moved.

PRODUCT FEATURES

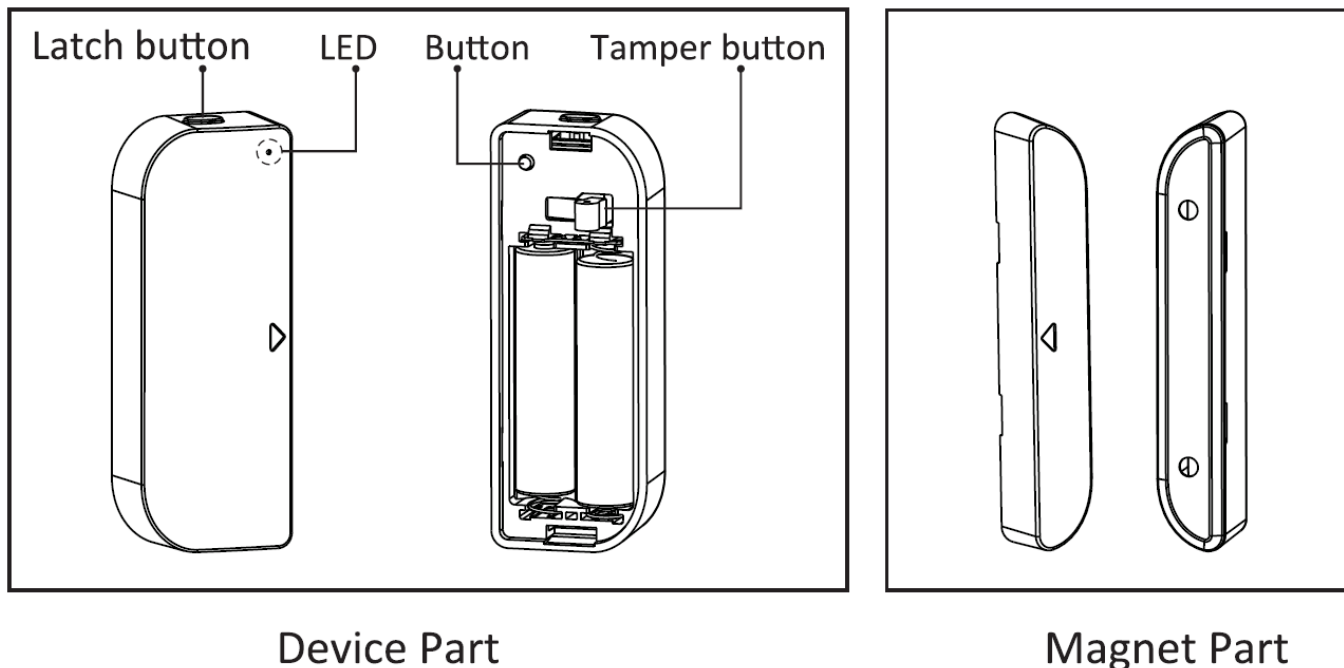
- Working in 802.11 b/g/n 2.4GHz wireless network (no hub required).
- Wi-Fi network configuration with EZ (Smart Config) and AP(Access Point) mode.
- Powered by 2xMA battery for lasting 6 months depending on alarm frequency.
- Real state (open/close) monitor in APP.
- Notification with Open/Close, Tampered and Low battery (less than 10%).
- Enable/disable notifications on Open/Close, tampered, low battery event in APP.
- Indicate the battery level in APP.
- Open/Close history record.
- Share device in family.
- Dual color LED status indicator.
- Mounting with adhesive tape or screw

How to Get the device working:

- Make sure your Wi-Fi network work in 802.11 b/p/n 2.4GHz and internet available.
- Download the APP from Apple store or Google Play.
- Register an account in the APP and log in with your email address or Mobile phone number.
- Set up the device's Wi-Fi connection.
- Mount the devise on a specified location.
- Test and check the Device and APP working state.

PRODUCT DESCRIPTION

The main device components are shown as following:



1. **Latch button:** press the Latch button to take apart the battery cover from the device part In order to change the batteries or setup the WI-FI network.
2. **Button:** Long press this for 5 seconds this button to enter the WI-FI network mode. Switch between EZ mode and AP mode by long press the button more than Seconds.
3. **Tamer button:** Losing this button will trigger a tempered Alarm to Mobile Phone.
4. **LED Indicator:** Indicate the device's working state:
 - **Fast blinking in Red:** EZ mode (Smart config) for Wi-Fi configuration.
 - **Slow blinking in Red:** AP Mode for Wi-Fi configuration.
 - **Flash once In Blue:** WI-FI network connected, short press the temper button or move the magnet from the device part to flash the Blue.
 - **Flash once in Dual-Color:** No Wi-Fi network connected, short press the temper button or move the magnet from the device part to flash the Dual LED.

NOTE:

1. To check the device Is working or not: Press the tamper button or move the magnet part to close the device, the LED indicator will flash.
2. To check the device is Wi-Fi connection or not: if the LED indicator turns purple, the device is non Wi-Fi connected. If the LED indicator turns blue, the device is WI-FI connected

PRODUCT SPECIFICATIONS

Power supply	2'AAA battery, 3V
Wireless frequency	2.4GHZ-2.484GHz
Network protocol	IEEE802.11 b/g/n
Transmitting power	802.11b:17dBm±2dBm@1Mbps 802.11g:15dBm±2dBm@54Mbps 802.11n:13dBm±2dBm@MCS7 HT20
Receiving sensitivity	802.11b:-91dBm@1Mbps 8%PER 802.11g:-75dBm@54Mbps 10%PER 802.11n:-72dBm@MCS7 HT20 10%PER
Vector error EVM	802.11b:S35% 802.11g:-28dBm max. 802.11n:-28dBm max.@MCS7_H120
Working temperature	-10-+WC
Storage temperature	-20-+GQOC
Relative humidity	8%~80%

INSTALL APP AND REGISTER AN ACCOUNT

1. Scanning the following QR code to download APP for Android and iOS System. Or you can download the APP named as "Maxell Smart" from Apple store and Google Play.
2. Launch the APP and register an account with your email address then login.

- 1) Download APP and install (1-1)
- 2) Register the APP (1-2)

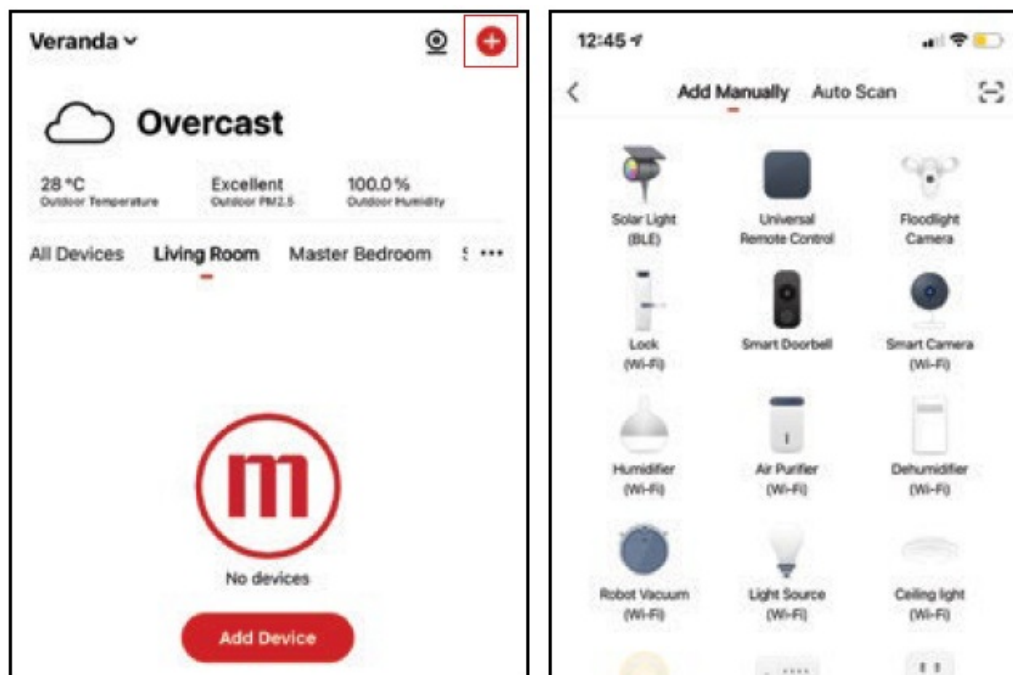


1-1

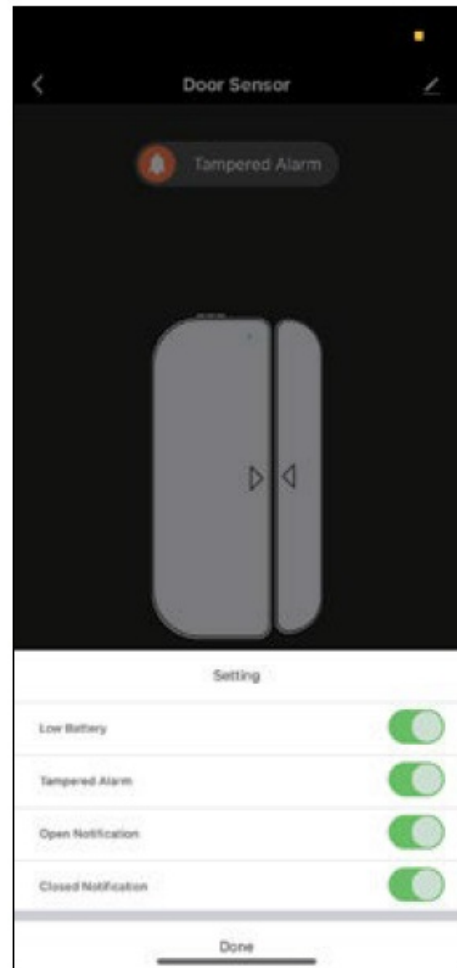
1-2

ADD AND REMOVE THE DEVICE IN YOUR APP ACCOUNT

1. Click ADD DEVICES-> Choose your DEVICE or Scan the QR Code printed on the DEVICE.



2. Press the device button for 5 seconds to enter the Wi-Fi configuration state (fast blinking In EZ mode or slow blinking In AP mode).
3. Input the Wi-Fi SSID and password of the Wi-Fi network that the device is going to work with, then waiting around 30 seconds for the Wi-Fi configuration finished until a device is successfully added;
4. Change the device name and share it within APP account as you want.
5. Click the device just added to launch the device state UI to check the state, battery level, record history and the APP notification setting



NOTE:

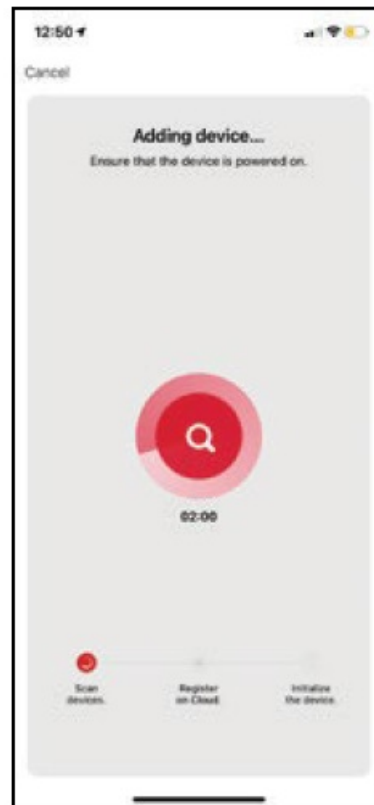
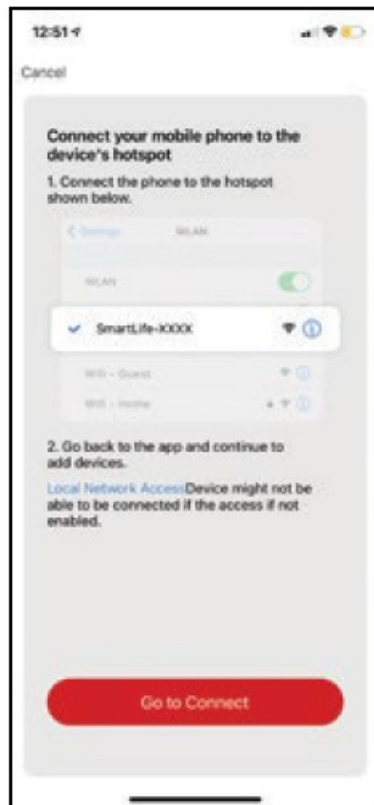
- Make sure the device and APP work in the same Wi-Fi configuration mode, both in EZ mode or in AP mode. Refer to Section 3 product description LED indicator part to check which state the device is working with.
- In some case where the EZ mode is not working Wi-Fi network, AP mode is the only option.

EZ mode: make sure your APP is internet available and device and APP both work in EZ mode. Then input the Wi-Fi network password to finish the device adding. If you want to change the Wi-Fi network, please check the "Change network" in APP.



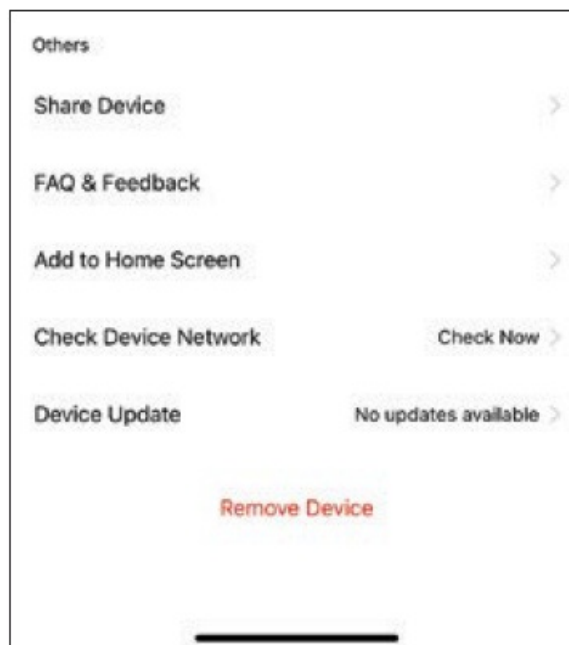
AP mode: Click AP Mode, make sure your APP is internet available and device and APP both work in AP mode. Confirm to input the SSID and Password of Wi-Fi network, then select the Device AP name with Maxell Smart - xxxx in Wi-Fi list then back to App to finish the device adding.





After the device is successfully added to APP account, the LED will turn off. Using the methods mentioned in LED indicator to check the device is successfully added or not. If not, please repeat the Device adding again.

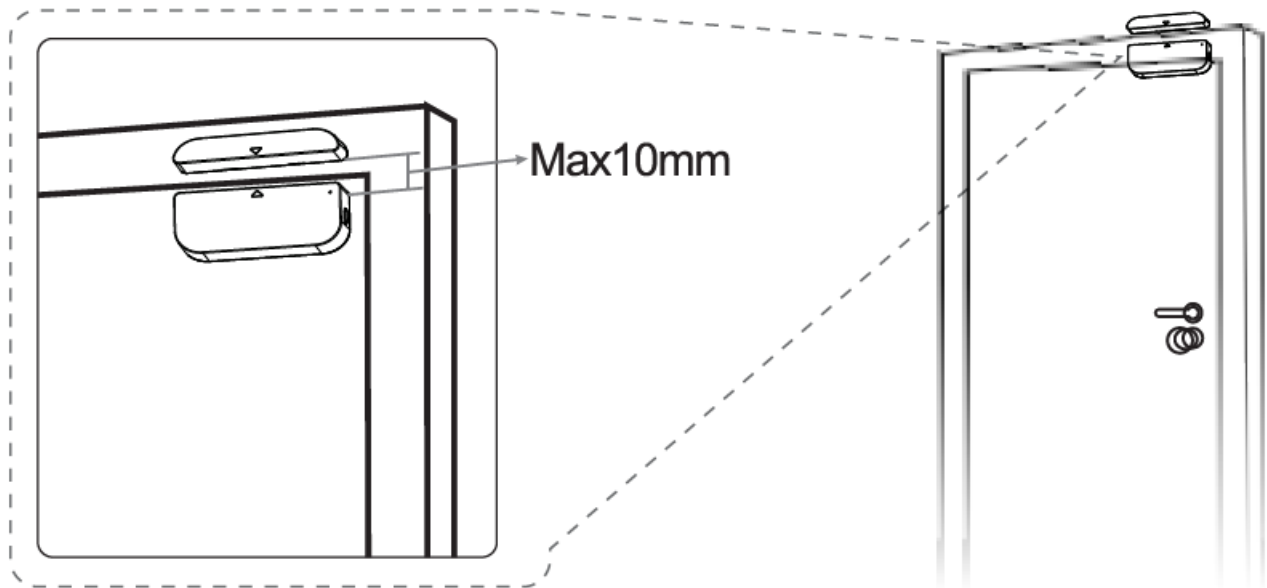
Remove device 1) Click “Remove Device” to remove this device from your account; click “Restore manufacturer Defaults” to remove the device from your account and clear the history record in cloud.



After remove device or Restore manufacturer defaults from the APP, repeating the Device add steps to your account.

PRODUCT INSTALLATION AND CHECK THE WORKING STATE

The device part and the magnet part have to be installed within 10MM when the door/window is closed.



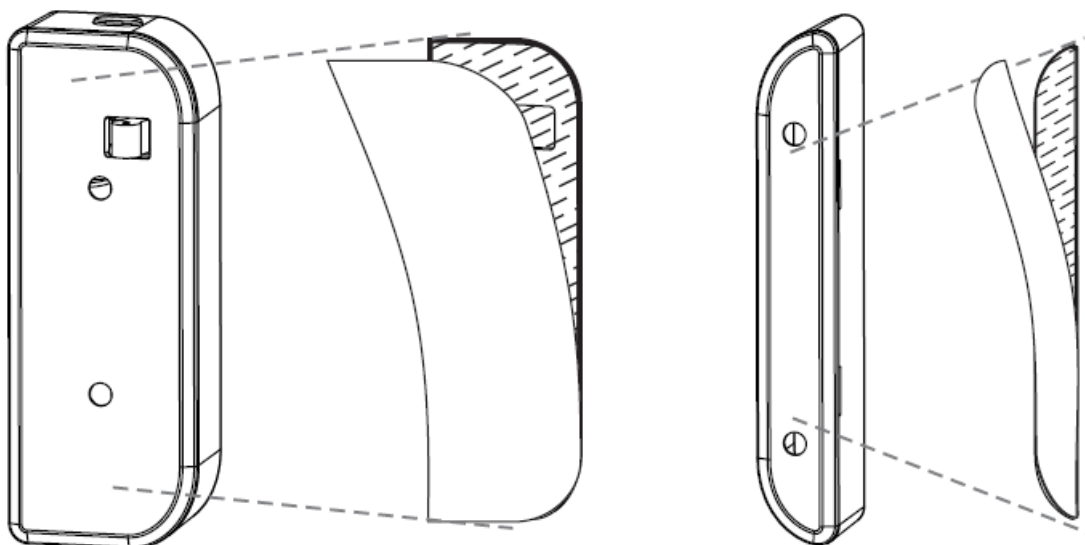
NOTE:

1. This Sensor should not be mounted directly on or near metal framing or other large metallic objects since metal objects may weaken the radio signal strength.
2. This Sensor should only be placed indoors and away from water and other extreme weather conditions.

Use one of the following methods to mount the device to the wall, door or window:

3M Tap Mode

1. Stick the included self-adhesive pads to the bottom of the device and magnet.
2. Peel off the protective layer of the sticker.
3. Stick the device onto the door/window frame.
4. Stick the magnet onto the moving part of the door/window, no further than 10mm from the sensor.

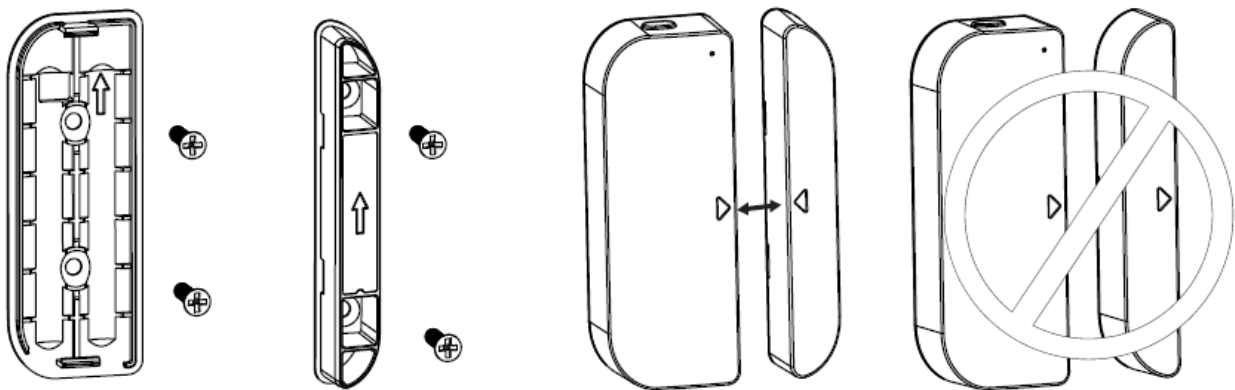


NOTE:

Wipe clean the surface where the Door Window The sensor will be mounted.
Any dust and particles can reduce the adhesion of the double-sided mounting tape.

Screw mode

1. Take the battery cover apart from the device part by pressing and holding the latch button and the holder of the magnet part.
2. Screw the battery cover on to the door or window frame.
3. Keep the orientation marks of the device part and the magnet are oriented towards each other.
4. Screw the magnet holder to the moving part of the door or window.
5. Mount the device part on to battery cover.
6. Mount the magnet part to the holder.



Change the battery and change the Wi-Fi network the case of the battery is over or the Wi-Fi network is changed(SSID or password is changed), take down the device part, to replace the battery or config the Wi-Fi network again.

1. Press and hold the Latch button to take apart the device part. Leave battery cover tapped on the screw on the frame.
2. Change the batteries.
3. Or follow the Device add procedures.
4. Mount the device part back to the battery cover.

Test and check the device's working state

1. Simply to open/close the moving part from the frame, that is to take the magnet blue and state in APP changes between open and close.
2. Take down the device part from the battery cover, the LED is flashing once in blue and APP will receive a Tampered alarm. art apart from device art, if the LED is flashing once in blue and APP will receive a Tampered alarm.

FCC NOTICE

This device complies with part 15 of the FCC Rules. Operation is subject to the following two conditions:

1. This device may not cause harmful interference
2. This device must accept any interference received, including interference that may cause undesired operation.

The manufacturer is not responsible for any radio or tv interference caused by unauthorized modifications or change to this equipment. Such modifications or change could void the user's authority to operate the equipment. This equipment has been tested and found to comply with the limits for a Class B digital device, pursuant to part 15 of the FCC Rules. These limits are designed to provide reasonable protection against harmful interference in a residential installation. This equipment generates, uses and can radiate radio frequency energy and, if not installed and used in accordance with the instructions, may cause harmful interference to radio communications. However, there is no guarantee that interference will not occur in a particular installation.

If this equipment does cause harmful interference to radio or television reception, which can be determined by turning the equipment off and on, the user is encouraged to try to correct the interference by one or more of the following measures:

- Reorient or relocate the receiving antenna.
- Increase the separation between the equipment and the receiver.
- Connect the equipment to an outlet on a circuit different from that to which the receiver is connected.
- Consult the dealer or an experienced radio/TV technician for help.

RF Warning statement:

To maintain compliance with FCC's RF exposure guidelines, this equipment should be installed and operated with a minimum distance of 20cm between the radiator and your body.

FAQ**Q: The device fails to be added in account?****Answer**

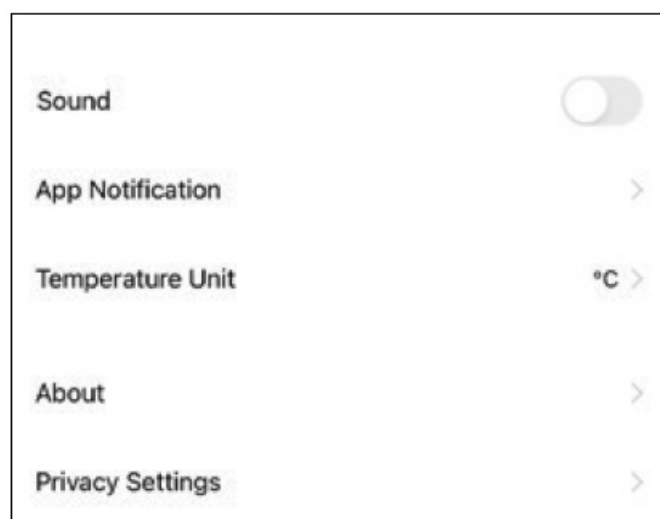
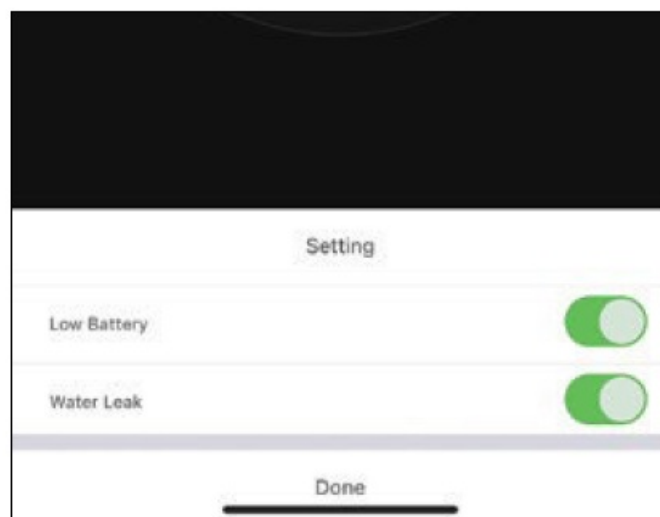
- Make sure the Wi-Fi network is 802.11 b/g/n 2.4GHz.
- Make sure the device works with APP in same Wi-Fi Configuration mode: EZ or AP.
- Make sure the input SSID and password of the Wi-Fi network are Correct.
- Make sure Wi-Fi internet connection is working fine.
- Make sure the device is powered on.

Q: The device state does not change while the door/window is opened/closed?**Answer**

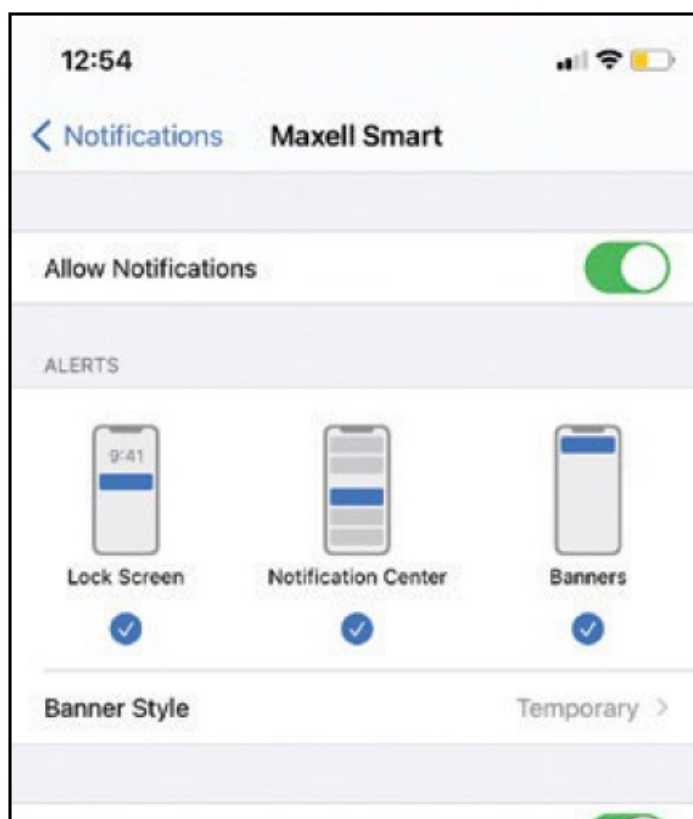
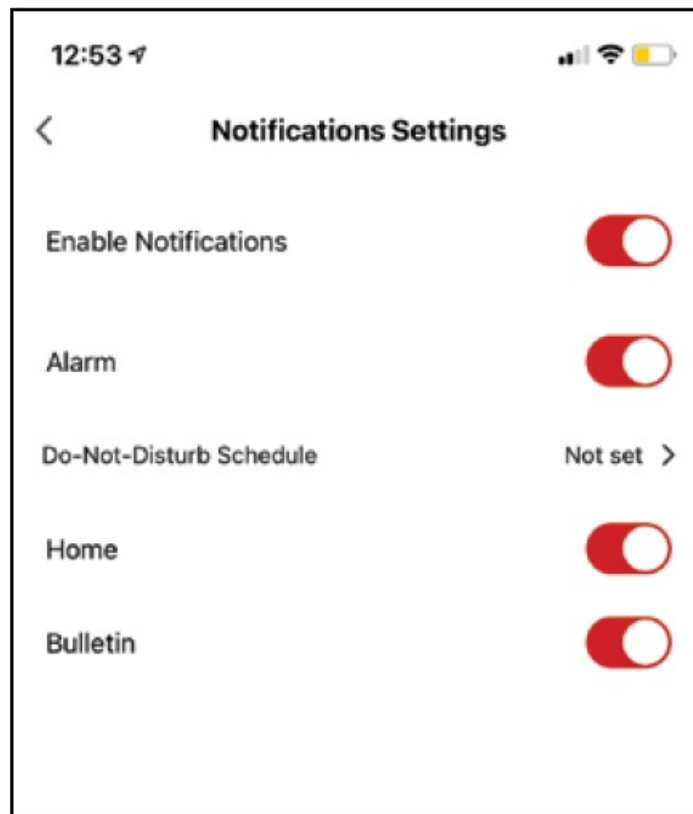
1. Make sure the device is in your Main Device List in APP.
2. Make sure the device is powered on.
3. Make sure the Wi-Fi internet is work fine.
4. Make sure the Mobile phone internet connection is available.

Q: The notifications can not be alerted on APP with my Android system?**Answer:**

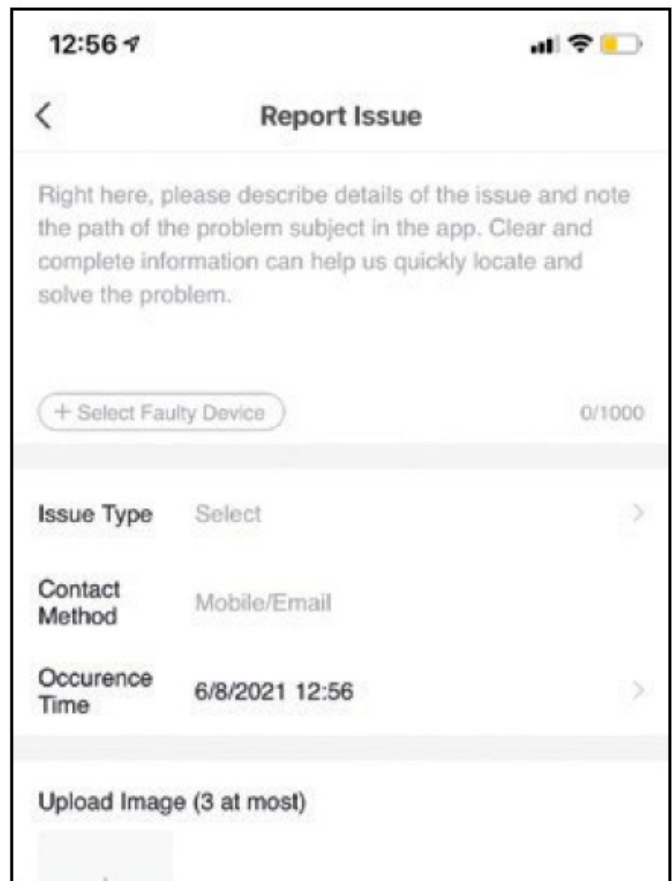
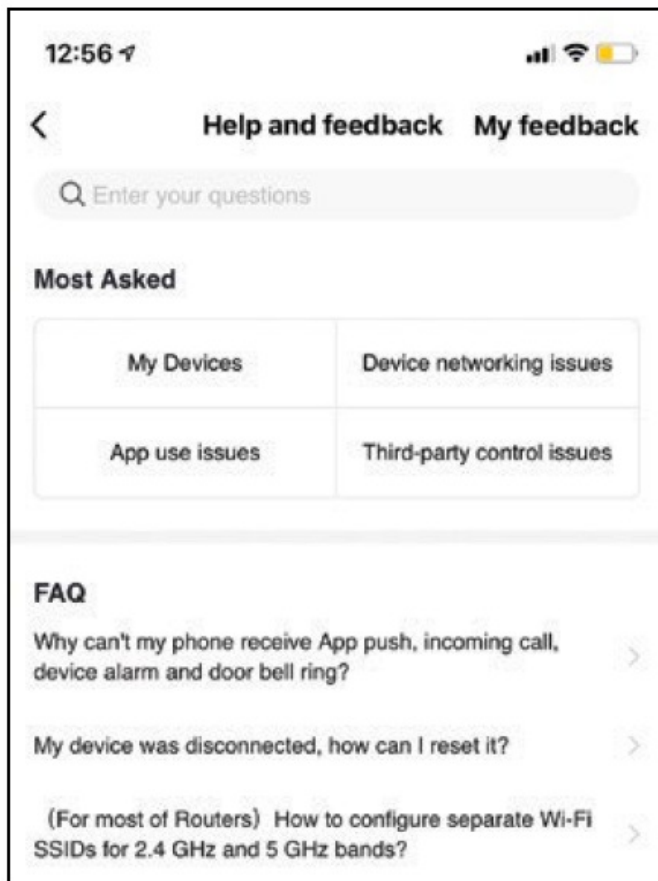
1. Make sure the alarm setting in APP is enabled.
2. Make sure the Push notification is enabled for this APP for the Android system.



Make sure the Notification settings are enabled with this APP. The setting is different from the version of the Android system and the Model of Mobile Phone. As a sample of Huawei Mate8, from Settings-> Apps & Notifications -> Apps, select the “Maxell Smart” APP -> APP permissions > Set individual permissions. Enable the “Maxell Smart” APP-> notifications-> Notification management as follows:



If you have any questions about the APP or device, please click Profile-> Feedback to fill your feedback to us in APP



Or Check the Profile -> FAQ to find some answers.

Documents / Resources

<p>maxell</p> <p>SMART DOOR/WINDOW SENSOR Wi-Fi Entry Detector</p> <p>MSS-DWS1</p> <p>QR Code</p> <p>Check the QR code on the product packaging for more information.</p>	<p>maxell MSS-DWS1 Smart Door-Window Sensor Wifi Entry Detector [pdf] User Manual</p> <p>MSS-DWS1 Smart Door-Window Sensor Wifi Entry Detector, MSS-DWS1, Smart Door-Window Sensor Wifi Entry Detector, Wifi Entry Detector, Entry Detector, Detector, Smart Door-Window S ensor, Door-Window Sensor, Window Sensor, Sensor</p>
---	---

[Manuals+.](#)