



Maxblue F088 Coffee Filter Instruction Manual

[Home](#) » [Maxblue](#) » Maxblue F088 Coffee Filter Instruction Manual 

Contents

- [1 Maxblue F088 Coffee Filter](#)
- [2 Product Information](#)
- [3 Installation Instructions](#)
- [4 FAQ](#)
- [5 Coffee Filter](#)
- [6 Installation instructions](#)
- [7 Cartridge preparation](#)
- [8 Care & maintenance](#)
- [9 Documents / Resources](#)
 - [9.1 References](#)
- [10 Related Posts](#)

Maxblue

Maxblue F088 Coffee Filter



Product Information

Specifications

- In accordance with EN 17093
- **Average Chlorine reduction:** 86%
- **Filtration Capacity:** 100L

Installation Instructions

Cartridge Preparation

Clean your hands carefully before touching the filter. Pull out the cartridge from the plastic wrapper. This enclosure can be recycled along with most other recyclable plastics. Fill a clean bowl with fresh cold water, sink the cartridge under the surface and shake it so that any trapped air inside it is released.

Install the Cartridge

Dislodge the water reservoir from the coffee maker and dump any leftover water. If the old cartridge is still in place, pull it out by turning it counterclockwise until it clears its mount. Put the new cartridge inside the reservoir's bottom, carefully aligning the threads on the cartridge's tip to those in its mount. Turn the filter clockwise to secure it firmly.

Rinsing and Preparation

Fill the reservoir with fresh, cold water. Re-install the water reservoir into the coffee maker. Flush the filter. If your model supports the cartridge change/flush function, you can use it now. Otherwise, channel the first full reservoir of water through the filter as hot water only, without adding coffee. Read the manufacturer's manual when needed.

Care & Maintenance

Regularly check the water reservoir to make sure that the cartridge is firmly in place and the filtering process is working seamlessly. Cartridge replacement should take place after 100L of use. If the coffee machine remains unused for more than 15 days, for example while you are out on vacation, it is recommended to change the filter before using it again.

Warning: Always remove cartridge prior to descaling the machine.

FAQ

- **How often should I replace the cartridge?**

The cartridge should be replaced after 100L of use.

- **Can I use the coffee maker without the cartridge?**

No, the cartridge is necessary for proper filtration and should always be installed.

- **What should I do if the filtering process is not working seamlessly?**

Make sure that the cartridge is firmly in place and check for any blockages or damage. If the issue persists, contact customer support for further assistance.

Coffee Filter

- **Replacement For:** Krups® Claris®

- **Model:** MB-C05

Water Filter

- In accordance with EN 17093;
- Average Chlorine reduction 86%
- **Filtration Capacity:** 100L

Installation instructions

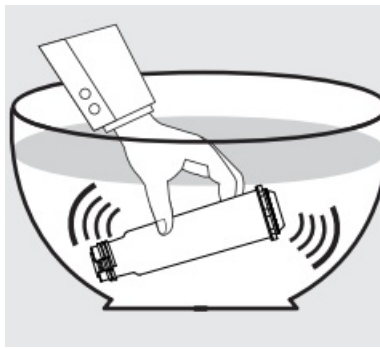
Coffee filter replacement for Claris® F088 Krups® AEG®

Important

The filter was created to become a premium quality alternative for customers who are seeking for a replacement cartridge to be used with coffee makers and other devices employing the Claris® Aqua filtering system.

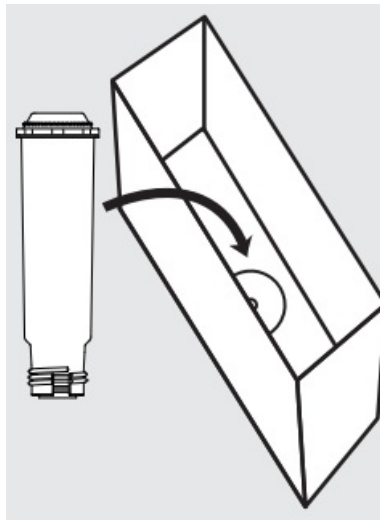
Cartridge preparation

- Clean your hands carefully before touching the filter.
- Pull out the cartridge from the plastic wrapper.
- This enclosure can be recycled along with most other recyclable plastics.
- Fill a clean bowl with fresh cold water, sink the cartridge under the surface and shake it so that any trapped air inside it is released.



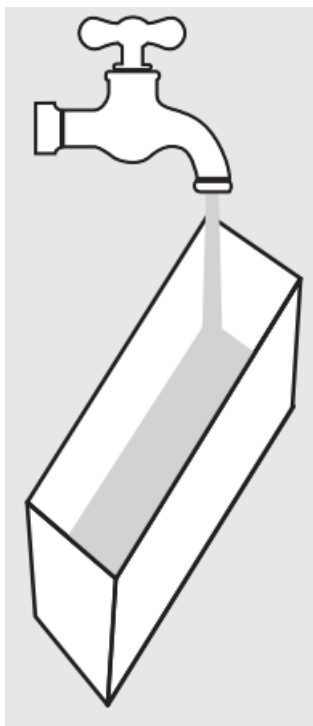
Install the cartridge

- Dislodge the water reservoir from the coffee maker and dump any leftover water.
- If the old cartridge is still in place, pull it out by turning it counterclockwise until it clears its mount.
- Put the new cartridge inside the reservoir's bottom, carefully aligning the threads on the cartridge's tip to those in its mount. Turn the filter clockwise to secure it firmly.



Rinsing and preparation

- Fill the reservoir with fresh, cold water.
- Re-install the water reservoir into the coffee maker.*
- Flush the filter. If your model supports the cartridge change/flush function, you can use it now.
- Otherwise, channel the first full reservoir of water through the filter as “hot water only”, without adding coffee.
- *Read the manufacturer's manual when needed.



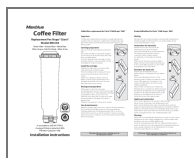
Care & maintenance

Regularly check the water reservoir to make sure that the cartridge is firmly in place and the filtering process is working seamlessly. Cartridge replacement should take place after 100L of use. If the coffee machine remains unused for more than 15 days, for example while you are out on vacation, it is recommended to change the filter before using it again.

Qingdao Ecopure Filter Co., Ltd.

- **Tel:** 1-888-352-3558 (U.S.)
- **E-mail:** service@waterdrop.com
- **Add.:** No.13, Yishengbai Road Jimo, Qingdao, China
- Made in China V003

Documents / Resources



[Maxblue F088 Coffee Filter](#) [pdf] Instruction Manual
F088 Coffee Filter, F088, Coffee Filter, Filter

References

- [User Manual](#)