

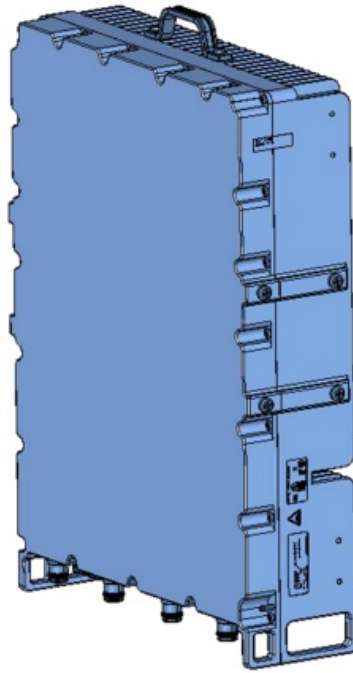


[Home](#) » [MAVENIR](#) » **MAVENIR MR44MOA Macro Remote Radio Unit Installation Guide** 

Contents [[hide](#)]

- [1 MAVENIR MR44MOA Macro Remote Radio Unit](#)
- [2 Introduction](#)
- [3 About the product](#)
- [4 Overviews](#)
- [5 Accessories](#)
- [6 Safety](#)
- [7 FCC Warning:](#)
- [8 Personal protective equipment](#)
- [9 Maintenance](#)
- [10 Storage – Before installation](#)
- [11 Installation requirements](#)
- [12 FAQ](#)
- [13 Documents / Resources](#)
 - [13.1 References](#)

MAVENIR MR44MOA Macro Remote Radio Unit



Introduction

Document description

This document describes installation of the Mavenir Macro Remote Radio Unit and is intended for approved installation personnel.

About the product

Product description

The product is a Macro Remote Radio Unit for wireless networks. The product has 4G LTE/5G NR technology and operates as a radio transceiver that connects to an operator at Network Operations Centre.

Symbols in the manual



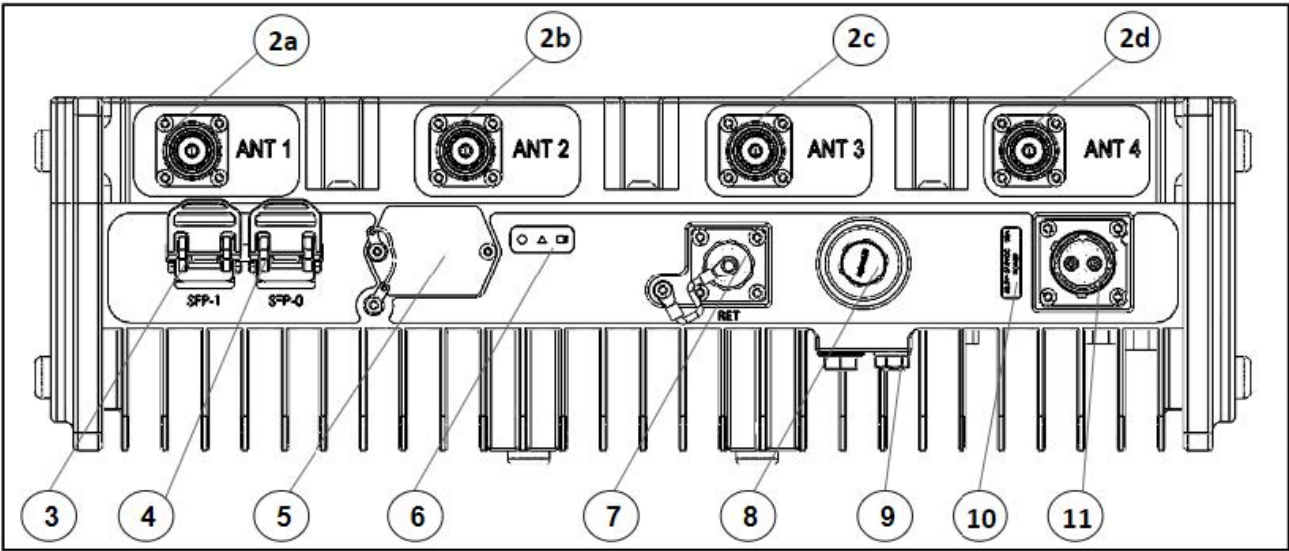
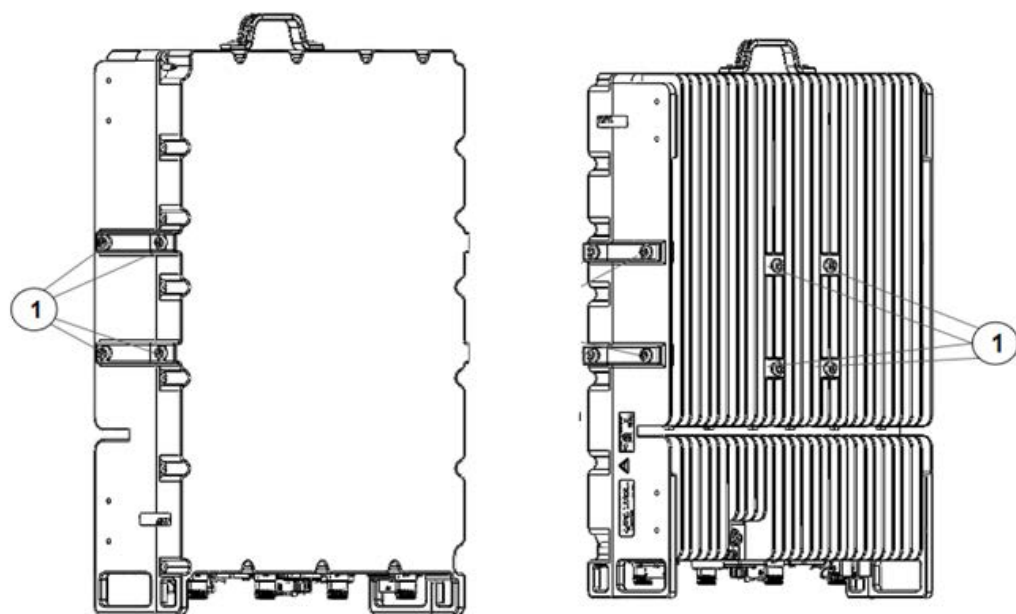
- **Warning** If you do not obey these instructions, there is a risk of death or injury.



- **Caution** If you do not obey these instructions, there is a risk of damage to the product, other materials, or the adjacent area.
- **Note** Information that is necessary in a given situation.

Overviews

Product overview

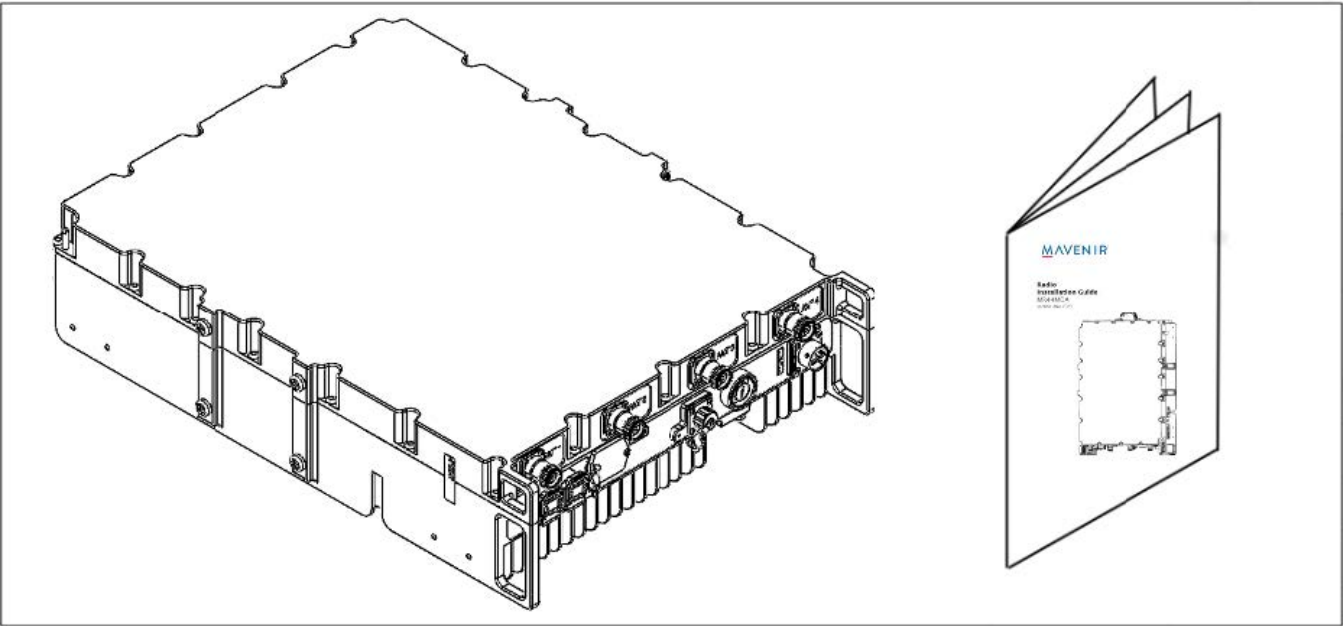


Interface panel overview

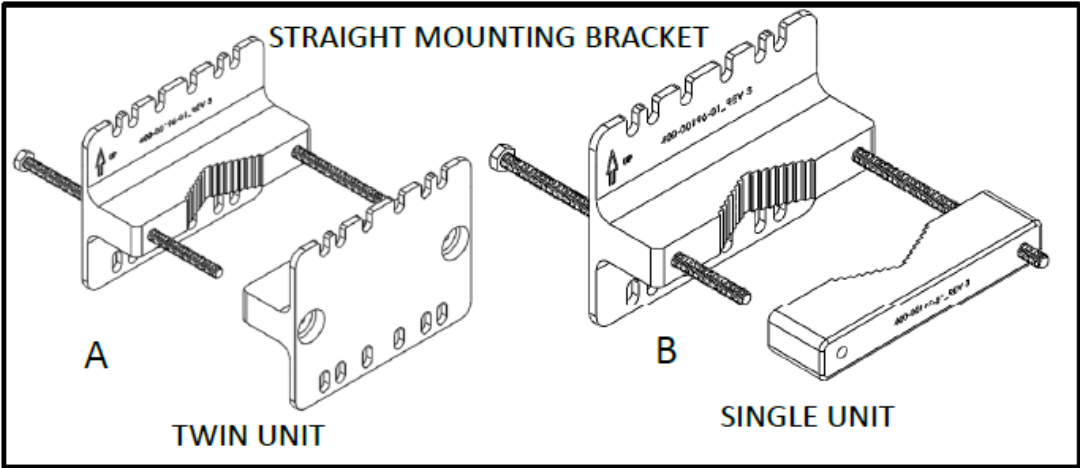
| | |
|--------------------------------------------------|--------------------------|
| 1.Attachment holes | 8. Air Vent |
| 2. 4.3-10 antenna ports (a, b, c, d) Female type | 9. Earth Cable Connector |
| 3. SFP1 (Reserved – Not in use) | 10. Power Label |
| 4. SFP0 (In use) | 11. Power Connector |

| | |
|-------------------------------------------------------|--|
| 5. Maintenance ports cover (Do not remove the cover.) | |
| 6. LED indicator | |
| 7. RET Connector | |

In the box



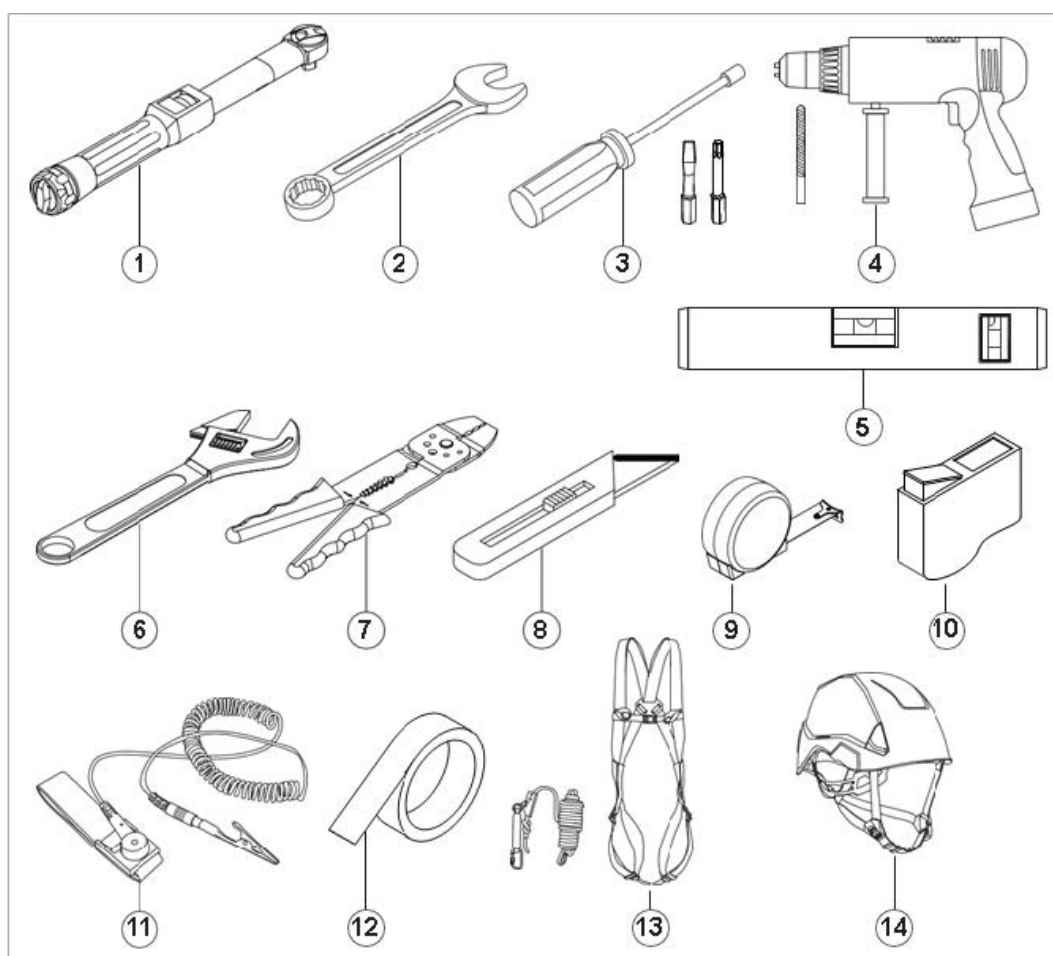
Brackets suitable for MR44MOA.



| Po s. | Mavenir part Num ber | Description | Max no. of radio units mounted at the same time |
|----------|-------------------------|-------------|----------------------------------------------------|
|----------|-------------------------|-------------|----------------------------------------------------|

| | | | |
|---|---------------|----------------------------------------|---|
| A | 921-00098-A13 | Straight Mounting Bracket, Twin Unit | 2 |
| B | 921-00097-A13 | Straight Mounting bracket, single unit | 1 |

Tools needed.



| Item | Tools | Used for |
|------|---------------------------------------------|------------------|
| 1 | Torque wrench M6 8Nm, Torx T30 | Mounting bracket |
| | Torque wrench M6 8 Nm, socket 10 mm | Mounting bracket |
| 2 | Wrench – 10 mm, 13 mm, 16 mm, 18 mm hex key | Miscellaneous |

| | | |
|----|------------------------------|------------------------------|
| 3 | Screwdrivers (Flat and Torx) | Miscellaneous |
| 4 | Power drill | Drilling holes in walls |
| 5 | Level bar | Attach the bracket to a wall |
| 6 | Adjustable wrench | Miscellaneous |
| 7 | Wire stripper | Cables |
| 8 | Knife | Miscellaneous |
| 9 | Steel tape measure | Miscellaneous |
| 10 | Optical connection cleaner | SFP cable |
| 11 | ESD Wrist Strap | Handling cables |
| 12 | Tape | Miscellaneous |
| 13 | Safety harness | Climbing |
| 14 | Safety helmet | Site safety |

Accessories

| Accessories | Mavenir Part No. | Manufacturer and P/N | Qty |
|--------------------------------------------------------------------------------|---------------------------------------------|-------------------------------|-----|
| Straight Mounting Bracket, Twin Unit OR Straight Mounting bracket. single unit | 921-00098-A13 OR921-00097-A13 | 921-00098-A13 OR921-00097-A13 | 1 |
| External Optical connector | FTLX1475D3BTL for 10G FTLF1436W5BTD for 25G | | 1 |
| SFP Boot Plug Kit | 125-00024-01 | Radiall OCTI117500 | 1 |

| | | | |
|----------------------------------------------------------------------------------------------------------------------|--------------|---------------------------------------------------------------------------------------------------------------------|---|
| External Power Connector | 125-00177-01 | JONHON CT48C-2T-11 Amphe nol ICC (FCI) C10-761296-Z2 S | 1 |
| External RET Connector | 125-00213-01 | Amphenol ICC (FCI) C091 31 H008 101 2 ULumberg 03320 0 08-1 | 1 |
| Ground Kit, Universal, for 3/8 " – 3" cable with 5' lead and unattached (1) 1/4" and(1) 3/ 8" (2) hole lugs | 650-00274-01 | Ground Kit, Universal, for 3/8" – 3" cable with 5' lead and una ttached (1) 1/4" and(1) 3/8" (2) hole lugs | 1 |

Safety

General safety

- Make sure that the workers know all installation methods and safety precautions before they start work.
- Before you install the product, you must first know all the components of the device and know how to do the installation.
- Before you start the installation, put up warning signs
- Before working on equipment that is connected to power, remove jewelry (including rings, necklaces, and watches). Metal objects will heat up when connected to power and ground and can cause serious burns or weld the metal object to the terminals.
- Read the installation manual carefully and understand the instructions before you install the product.
- The information in this installation manual is not a replacement for professional knowledge and experience. If you do not feel safe in the situation that you are in, stop the installation. Turn to your Network Operation Centre.
- The product can be hot. Wait for the unit to cool down before you do maintenance work. Always use protective gloves.

Note: "CAUTION" and "Hot surface" or equivalent "Do not touch" or equivalent

“ATTENTION” and “Surface chaude” or equivalent “Ne pas toucher” or equivalent

- Do not install the product if you are tired, while under the influence of alcohol or drugs, medicine or anything that could have a negative effect on your vision, alertness, coordination, or judgment.
- Hazardous voltages can be present when the system is in operation. Use caution when you remove or install the product.
- Observe all local and national electrical, environmental and workplace codes.

Safety instructions for installation

- Do not keep the product outdoors or remove the product from the box before you do the installation.
- Stay alert, monitor what you are doing and use common sense when you install the product. A moment of inattention may result in serious personal injury.
- A fall hazard is present when installation of this equipment requires working on towers, poles or at elevated work sites. All personnel who perform tower work or work at elevation must be qualified to perform this type of work.
- Do not install the product during bad weather.
- When you do work at a high location, make sure your tools are safe and do not fall. A tool that falls can cause injury or death.
- When you drill holes, you must put on approved protection equipment to keep out the dust from your eyes and lungs.

Electrical safety

- Do not touch uninsulated wiring or terminals unless the power to the lines have been disconnected at the source. Use an approved voltage meter to make sure that there is no power.
- To prevent electrical shock, never remove the cover or disassemble the equipment. There are no user serviceable components in the product.
- Risk of electrical shock or short circuit if the safety instructions are not obeyed.
- Only use approved cables when you install the product.
- Grounding and circuit integrity is vital to a safe operating environment. Grounding

conductors must be in place before installing the equipment. Never operate equipment when the grounding or bonding conductor has been removed.

- When you install the power cable of the product, you must first connect the cable to the product and then to the power device. If you install the cable the other way around, it can cause damage to the device or personal injury.

FCC Warning:

Note: This equipment has been tested and found to comply with the limits for a Class A digital device, pursuant to part 15 of the FCC Rules. These limits are designed to provide reasonable protection against harmful interference when the equipment is operated in a commercial environment. This equipment generates, uses, and can radiate radio frequency energy and, if not installed and used in accordance with the instruction manual, may cause harmful interference to radio communications. Operation of this equipment in a residential area is likely to cause harmful interference in which case the user will be required to correct the interference at his own expense.

Any changes or modifications not expressly approved by the party responsible for compliance could void the user's authority to operate this equipment. Shielded interface cables shall be used. IC Warning:

IC Warning:

This equipment digital apparatus complies with ICES-003.

CAN ICES-003(A) / NMB-003(A)

RF Exposure Compliance:

The equipment complies with RF radiation exposure limits set forth for an uncontrolled environment. The equipment should be installed and operated with a minimum distance of 25 meters between the radiator and your body.

Personal protective equipment

Use The personal protective equipment that follow during installation and commissioning.

- Approved head protection






- Protective shoes
- Protective gloves
- Approved safety straps for work on high locations.
- High visibility vest



Maintenance

- Special training is necessary for all servicing and repair work of the product.
- Maintenance port remains for design Debug and should not be used on site. Do not open.

Labels on the product

| Description | Label |
|-----------------------------------------------------------------------------------|------------------------------------------------------------------------------------------------------------------------------------------------|
| Hot Surface. Warning for hot surfaces. Keep hands and feet away. Risk of Burn. |  |
| Warranty Security Label |  MAVENIR WARRANTY VOID IF SEAL BROKEN OR REMOVED |
| Unit Label |  |
| FCC & UL Label |  |
| Power Label |  |

Storage – Before installation

- Keep the product in the original packaging.
- Keep the product indoors in a clean, dry, and frost-free location.
- Make sure that there is no risk of fire in the storage location.

To install the product

Skills and requirements for personnel

Installation and commissioning personnel must fulfill local and national regulations. “The radio unit will be installed and serviced by trained persons only. This is not normal user equipment”. To transport the product to the installation site

- Keep the product in the original packaging.
- Use straps or other equipment to fasten the product if it is necessary. Make sure that the product cannot move.
- Make sure that the transportation is dry and free from dust, frost, or static electricity.

To unpack the product

1. Examine the original packaging for damages.
2. Carefully remove the product from the original packaging. Make sure that no sharp edges can damage the product.
3. Make sure that no parts are missing.
4. Make sure that no parts of the product are damaged.

Minimum clearance distance

The illustration below shows the minimum clearance distance between the radio and other objects.

To do before the installation

- Make sure that the site is prepared according to the Customer Site documentation.
- Make sure that the power supply for the radio is installed and tested on site.
- Make sure that the grounding system is installed and tested.
- Make sure that a main switch/circuit breaker with an external fuse is installed and tested.

Cables

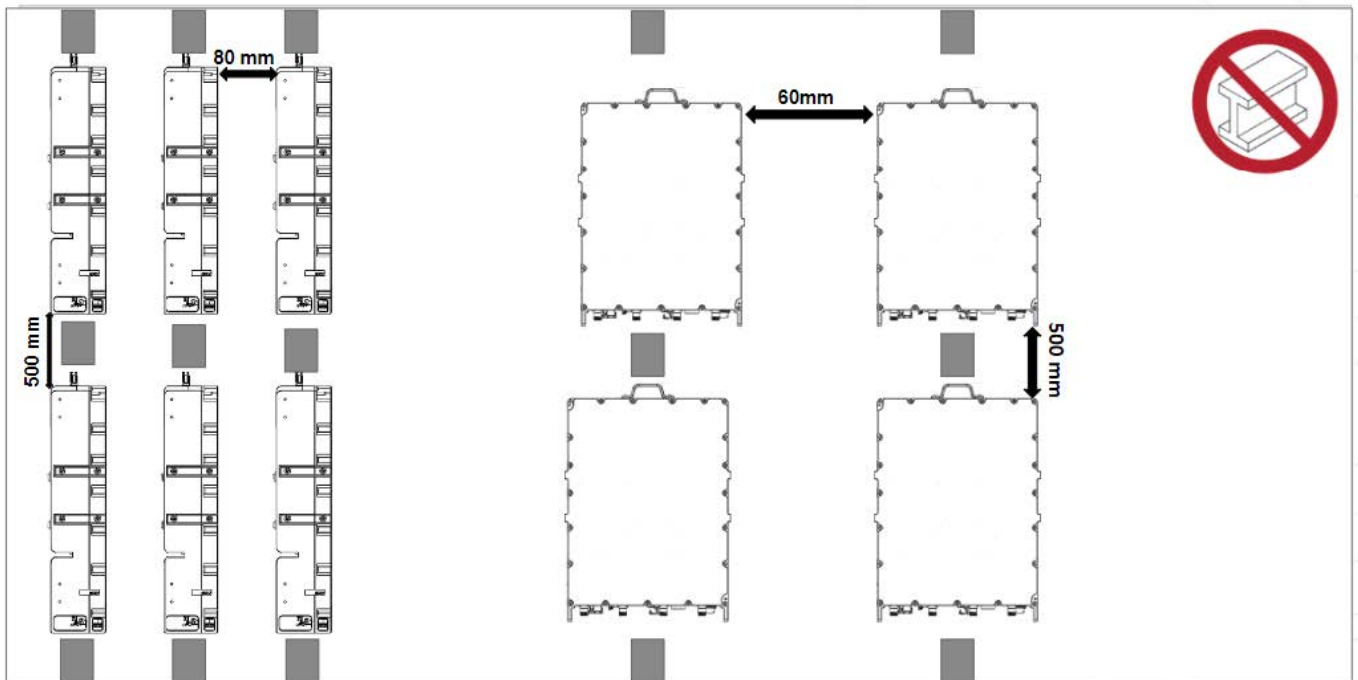
- If you mount the unit on a hollow pole, thread the cables inside the pole. Make sure that a civil engineer or a structural engineer approves the cable route.
- If you mount the unit on a solid pole, attach the cables to the outside of the pole using metal straps. Make sure that a civil engineer or a structural engineer approves the cable route.
- A civil engineer or structural engineer must approve the attachment method if you mount the unit on a wall.

Environment requirement

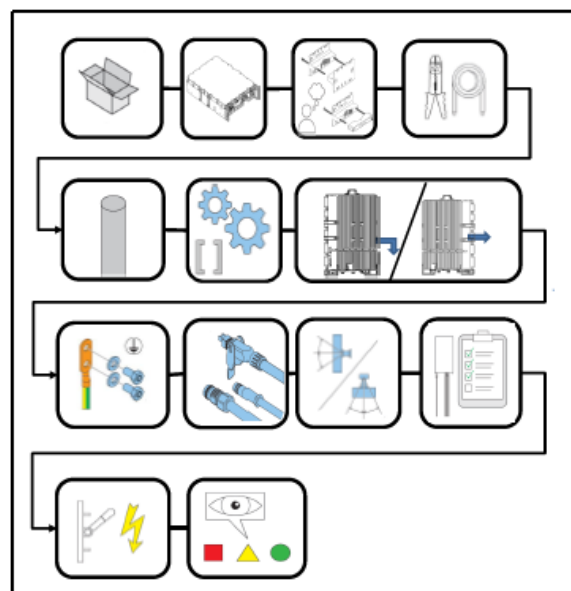
Make sure that you avoid the following when you install the product.

- Heat source (caused by heat radiation, reflection, ventilation system outlets, etc.)
- Equipment generating electromagnetic field.

- Metal surfaces or objects (ladders, poles, railing, etc). Metal barriers will reduce the coverage area and performance of the radio. Make sure that there are no metal objects in the space: $\pm 30^\circ$ at vertical direction and $\pm 60^\circ$ in horizontal direction.

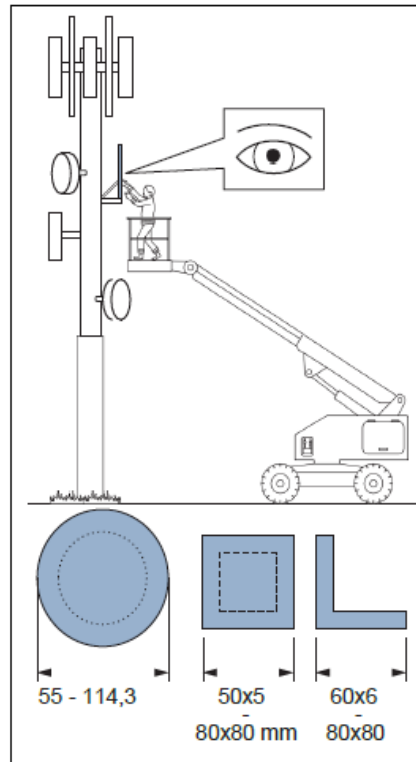


Installation process

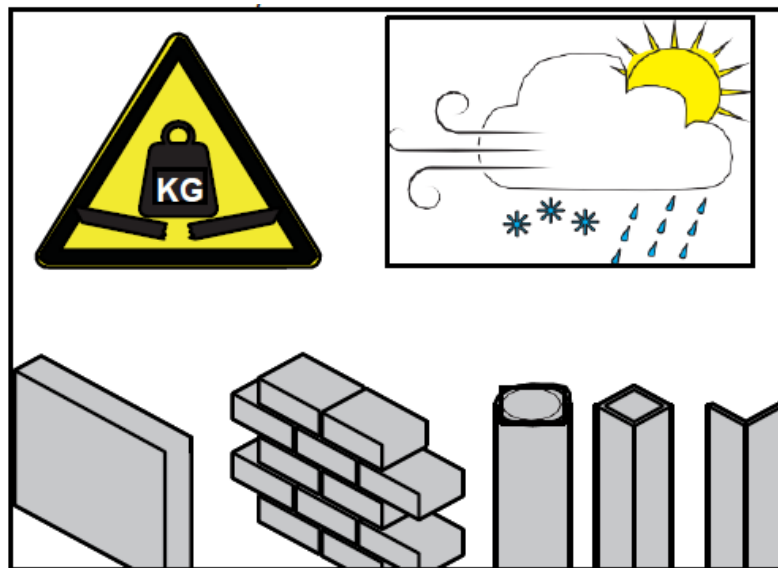


Installation requirements

Pole width



Note: Use a Cherry picker if no ladder is available Structure stability



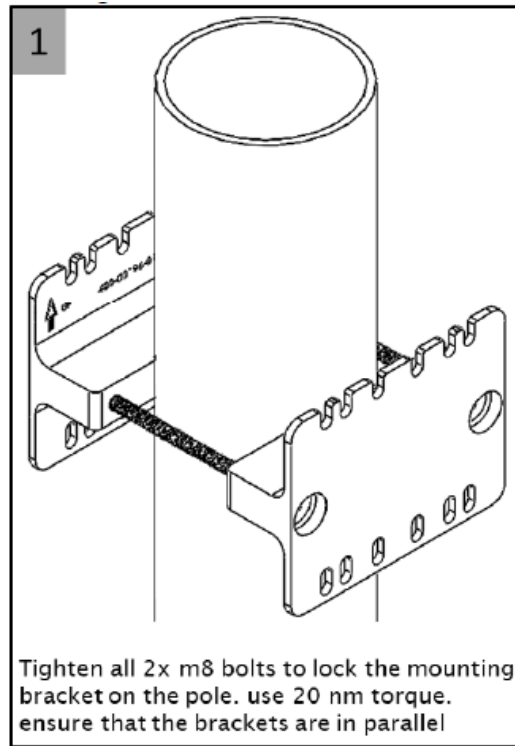
Note: Make sure that the structure that the unit will be mounted on can support the weight of the unit at all environmental conditions.

To install the radio on a pole with

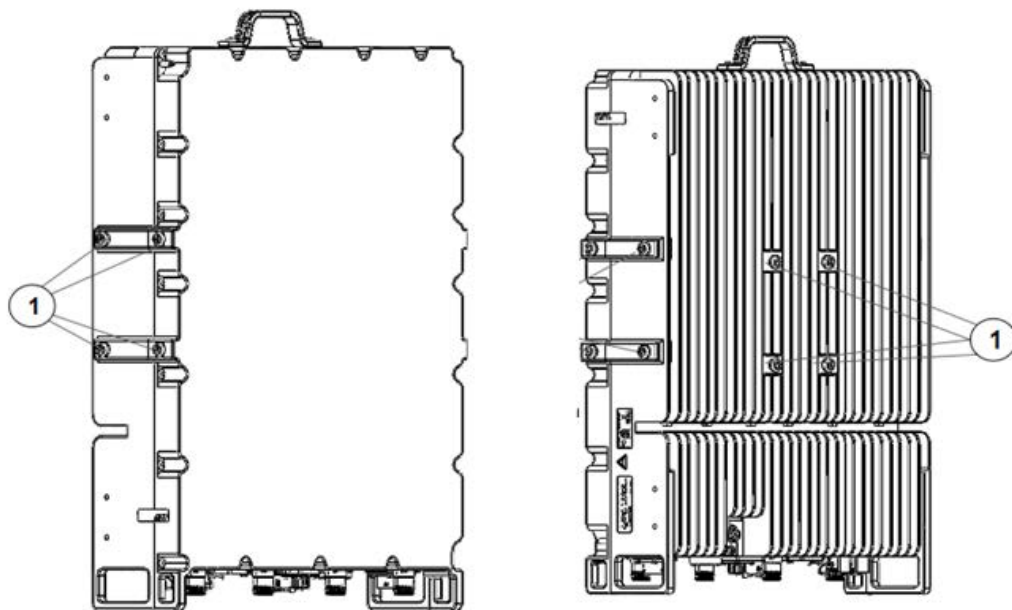
Straight Mounting Bracket, Twin Unit

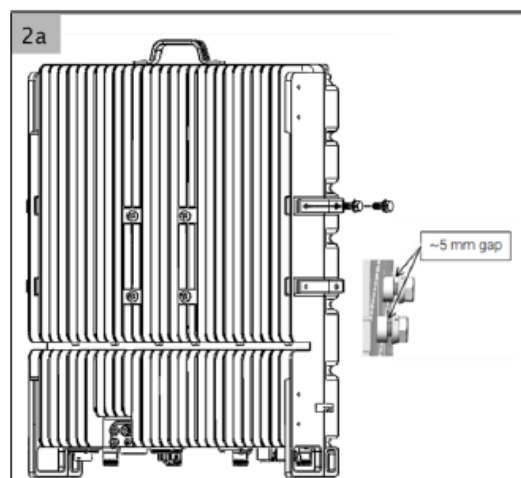
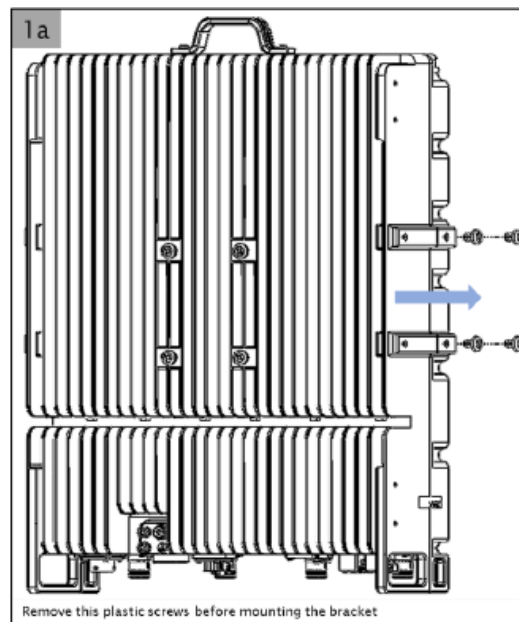
The radio can be mounted in portrait or book mode.

Fixing Mount Bracket on Pole:

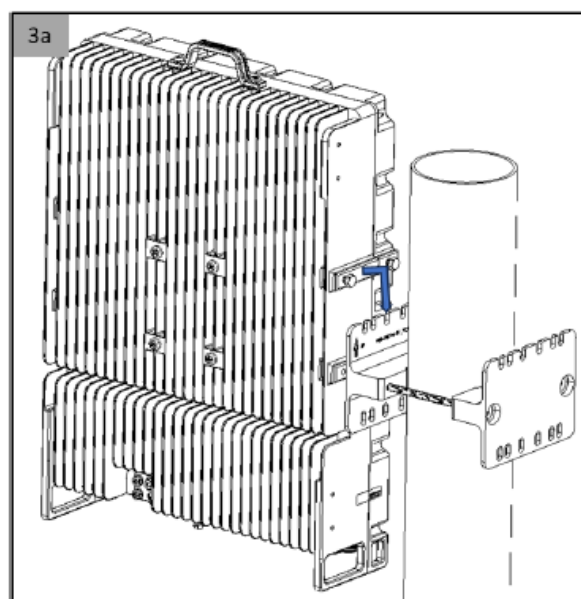


Book Mount (on Pole):

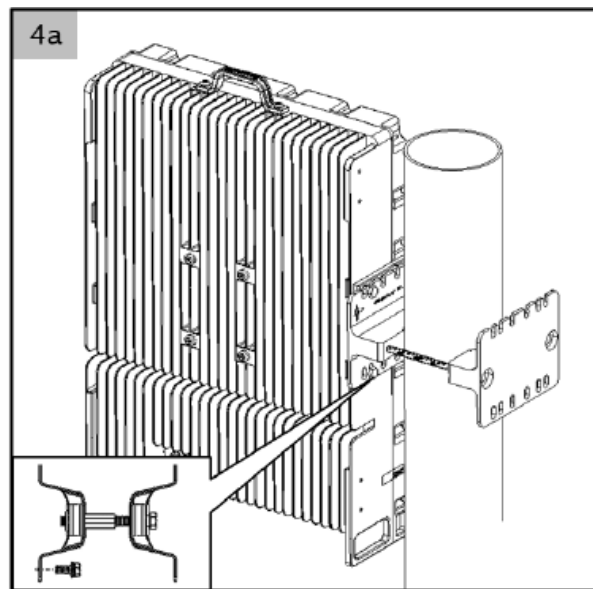




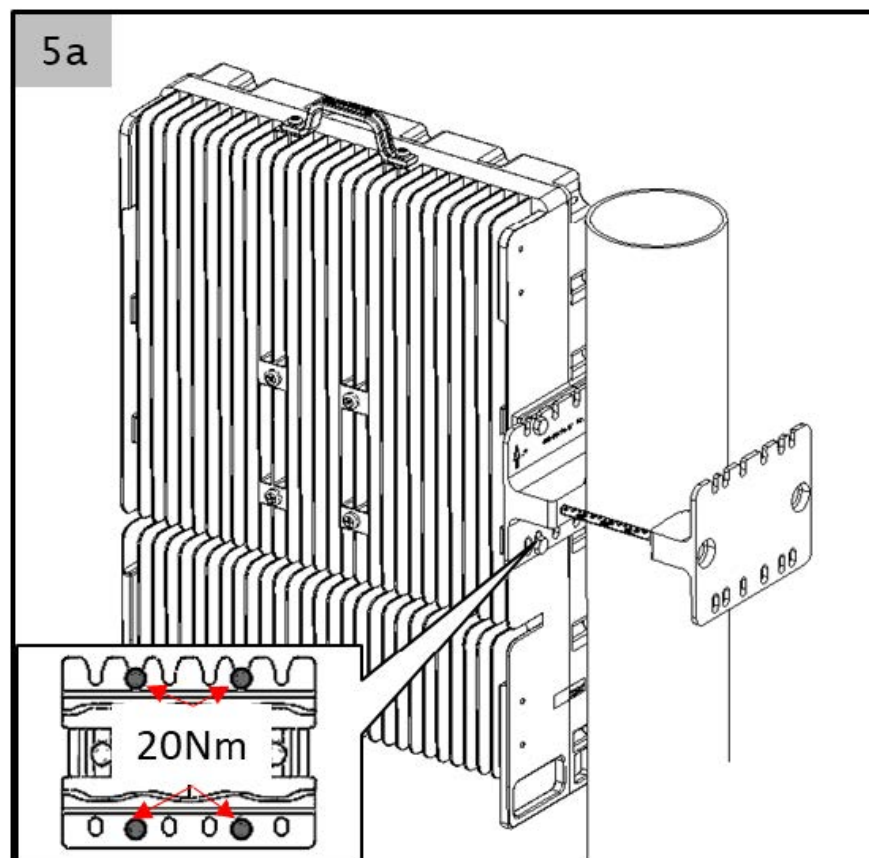
- Screw in the 2x M8X20 screws into the top side mounting boss and leave about 4-5 mm gap to accommodate the mounting bracket.



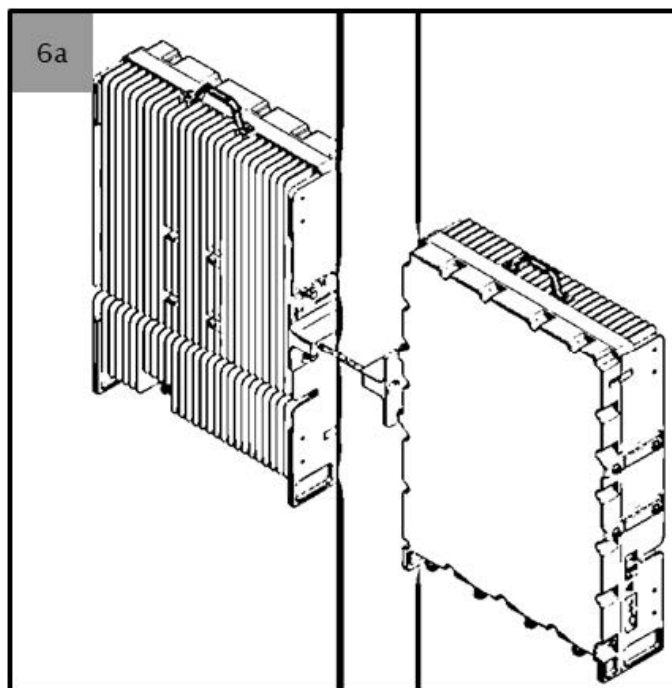
- Hook the radio unit on to the one side of the mounting bracket key slot



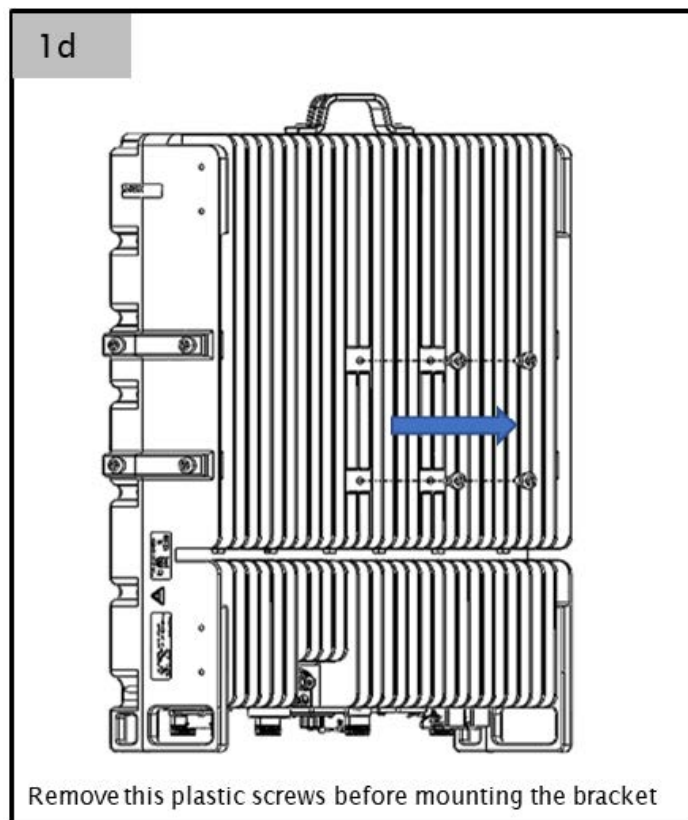
- Insert 2xM8 bolt to the bottom mounting location.

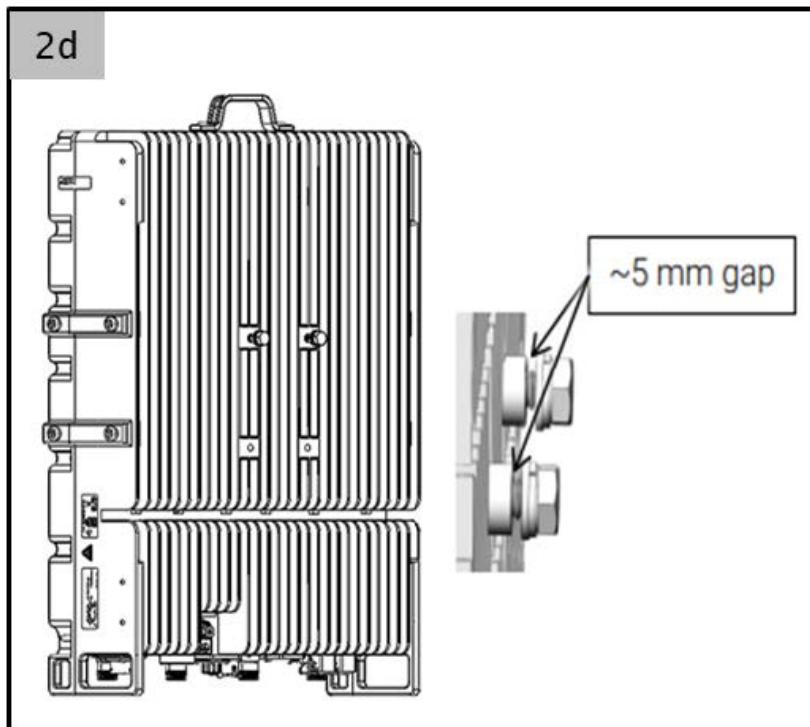


- Tighten all 4x bolts to 20 Nm.

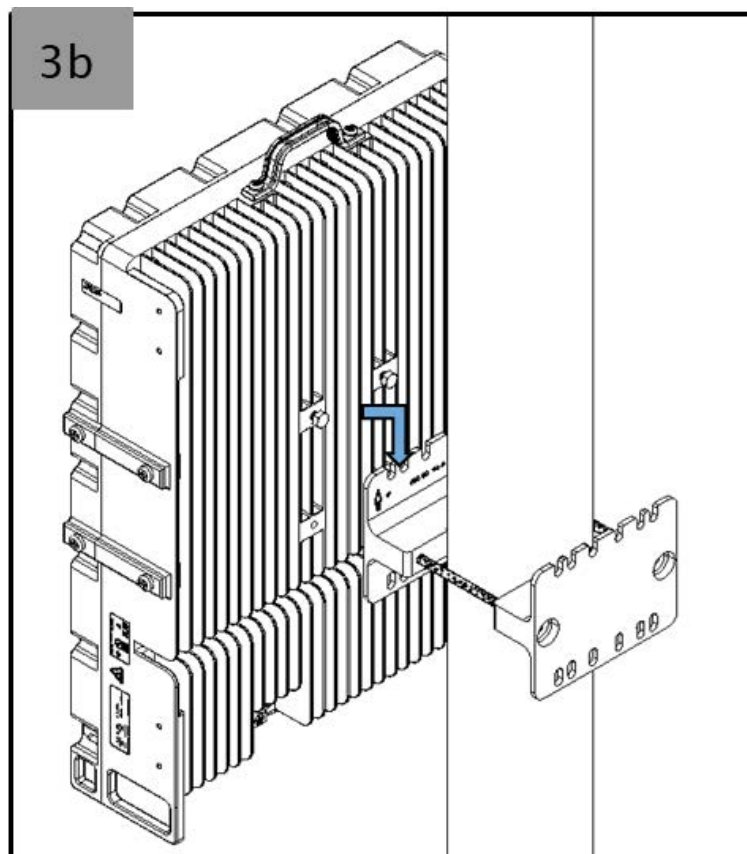


- Portrait Mount (on Pole):

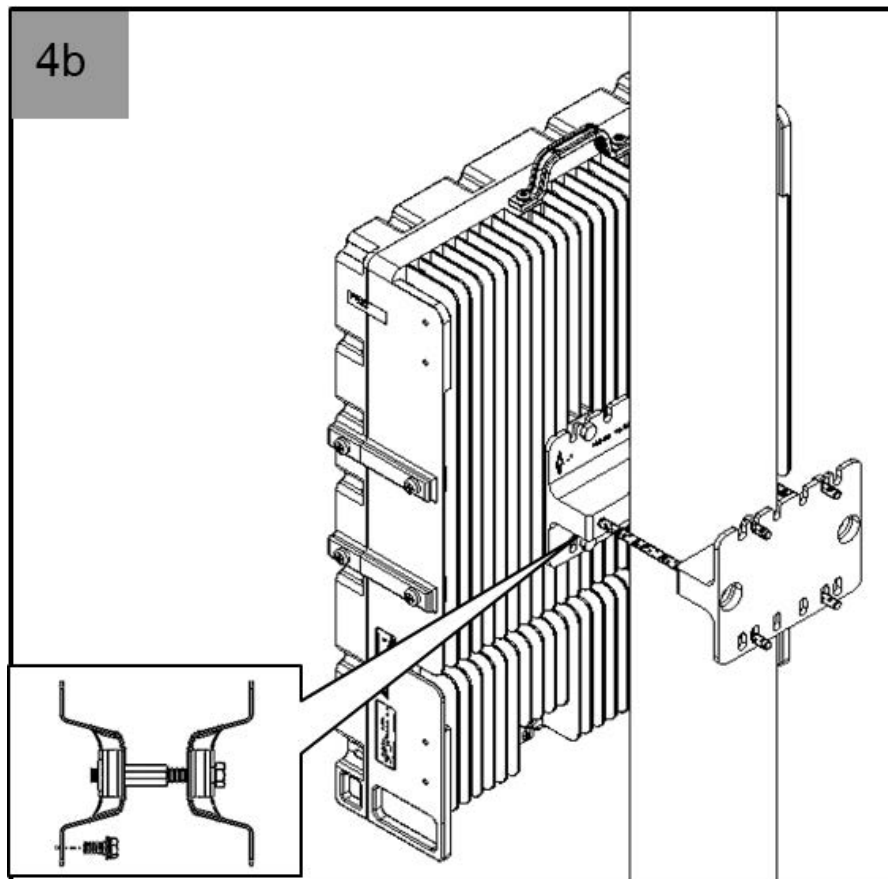




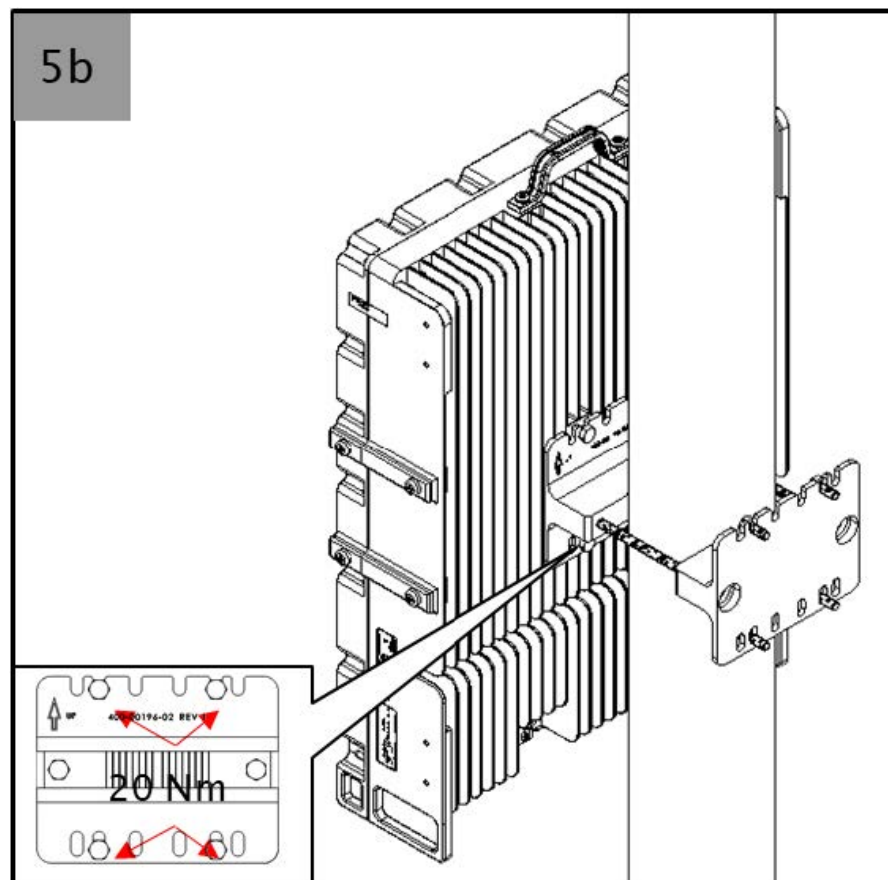
- Screw in the 2x M8X20 screws into the top side mounting boss and leave about 4-5 mm gap to accommodate the mounting bracket



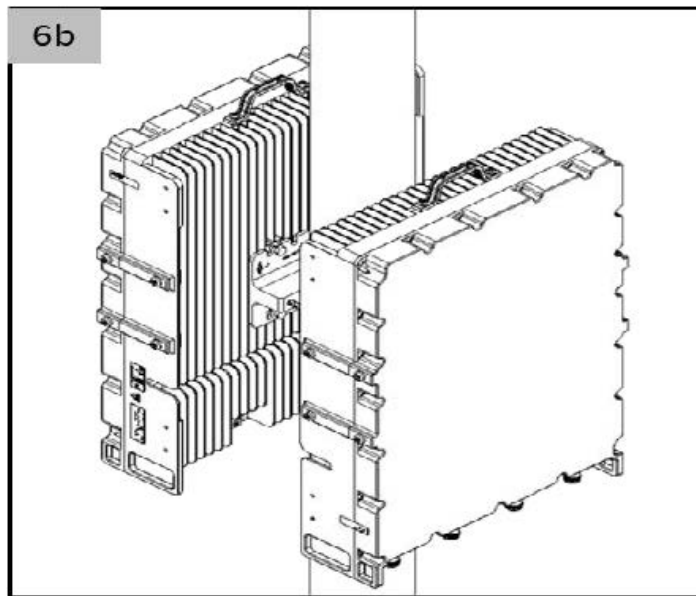
- Hook the radio unit on to the one side of the mounting bracket key slot



- Insert 2xM8 bolt to the bottom mounting location.



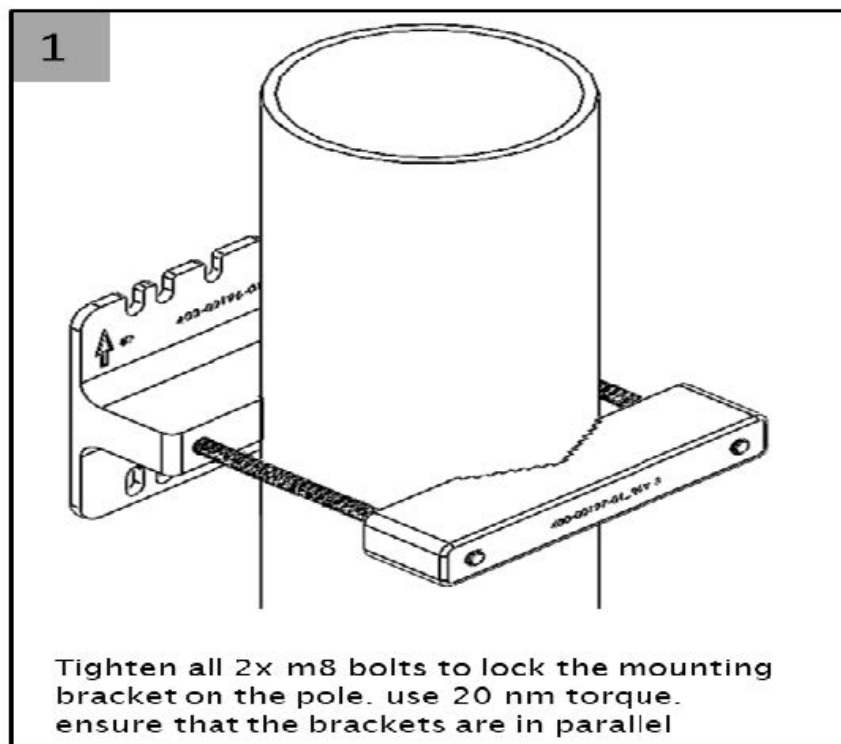
- Tighten all 4x bolts to 20 Nm.



To install the radio on a Pole with straight Mounting bracket, single Unit

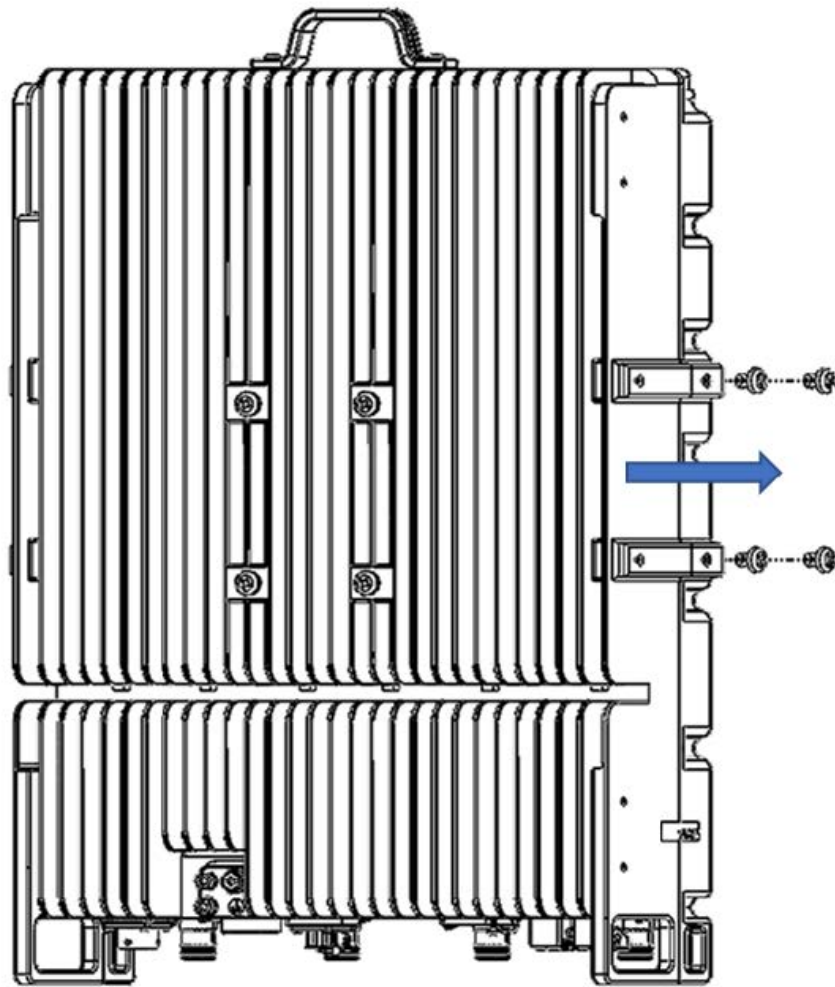
The radio can be mounted in portrait or book mode.

Fixing Mount Bracket on Pole:



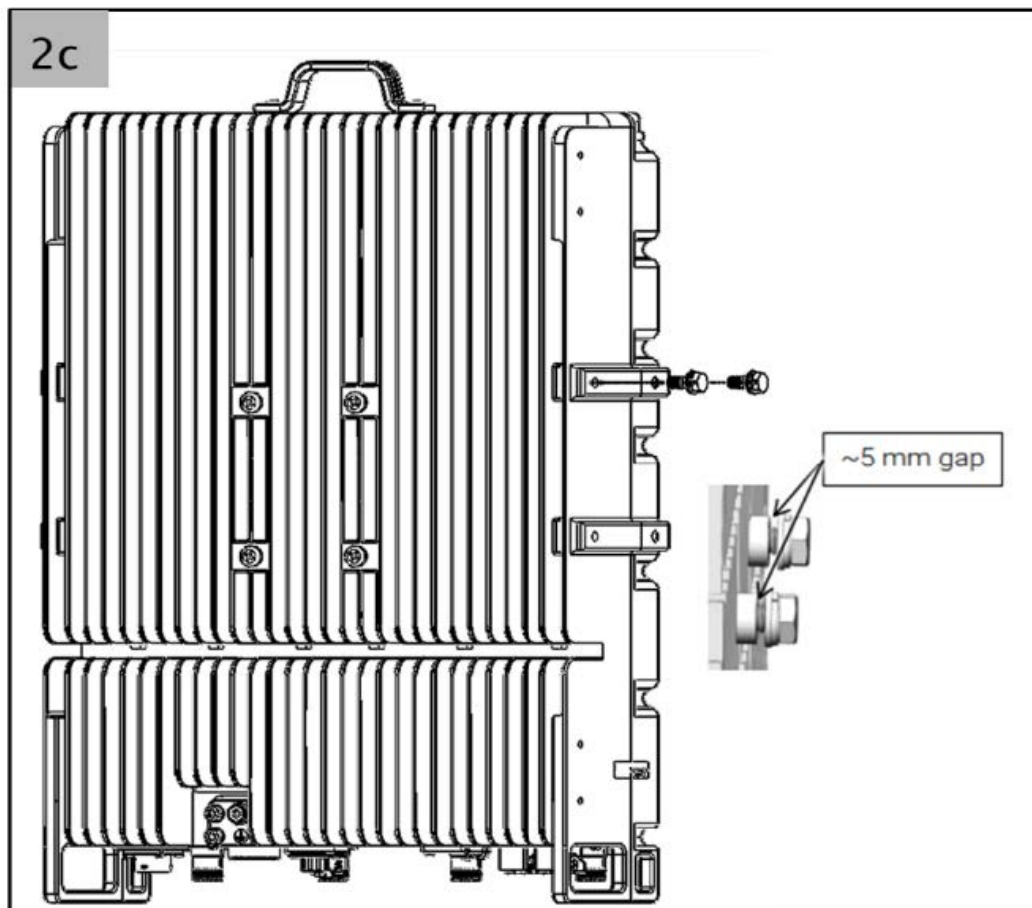
Book Mount (on Pole):

1c

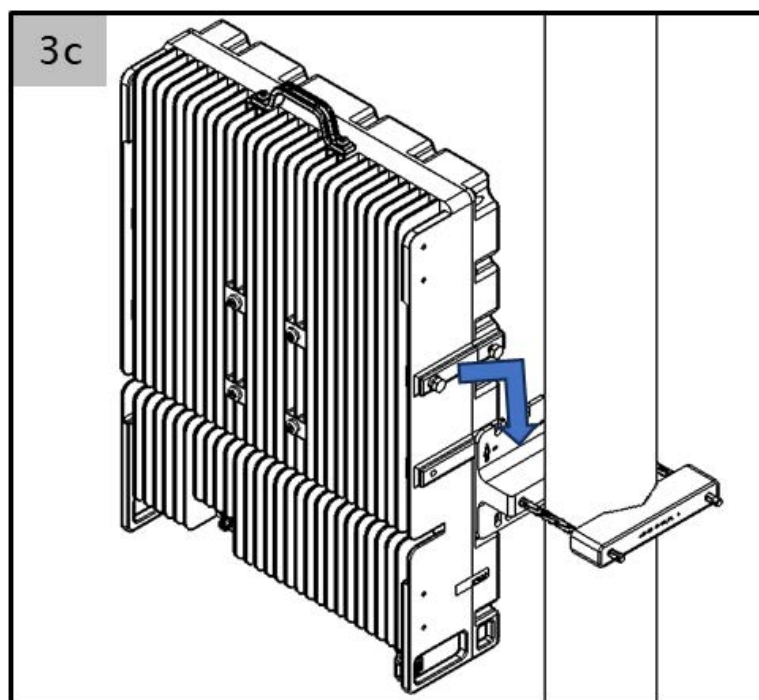


Remove this plastic screws before mounting the bracket

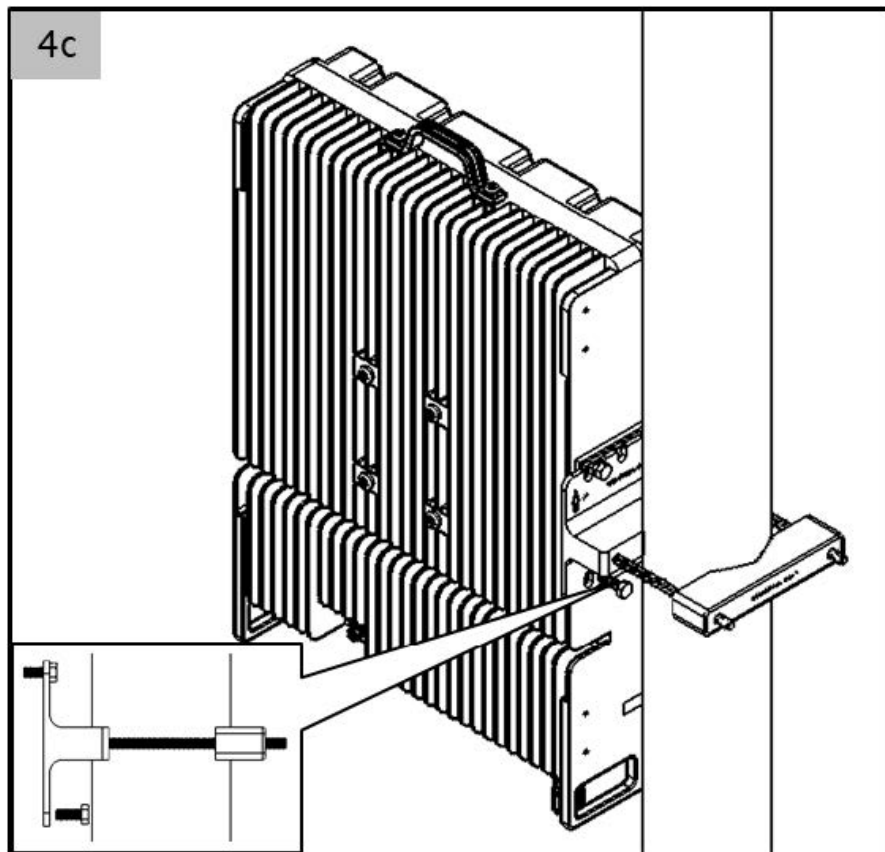
•



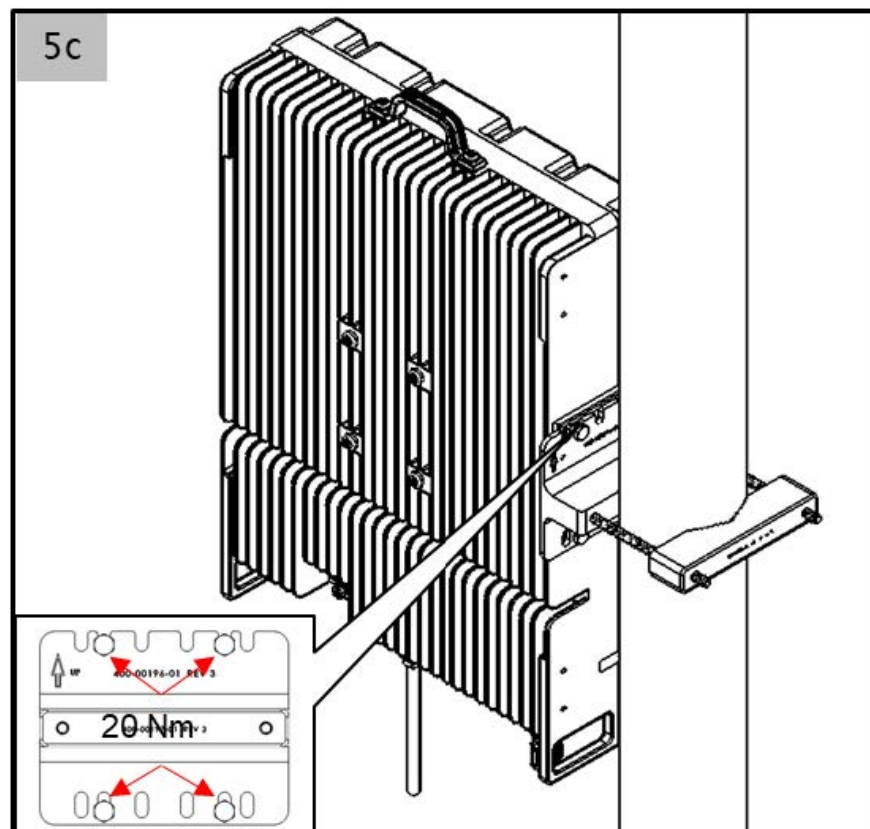
Screw in the 2x M8X20 screws into the top side mounting boss and leave about 4-5 mm gap to accommodate the mounting bracket.



- Hook the radio unit on to the one side of the mounting bracket key slot
-



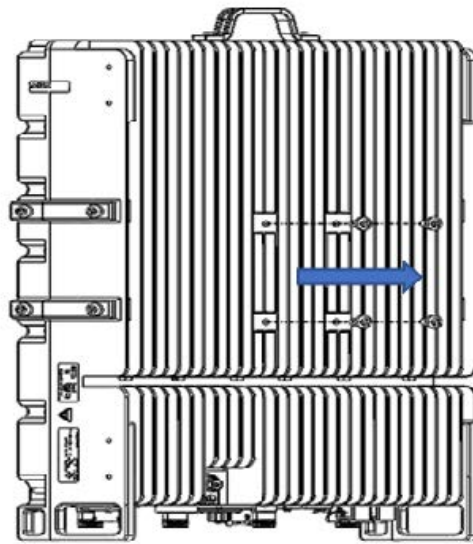
Insert 2xM8 bolt to the bottom mounting location.



- Tighten all 4x bolts to 20 Nm.

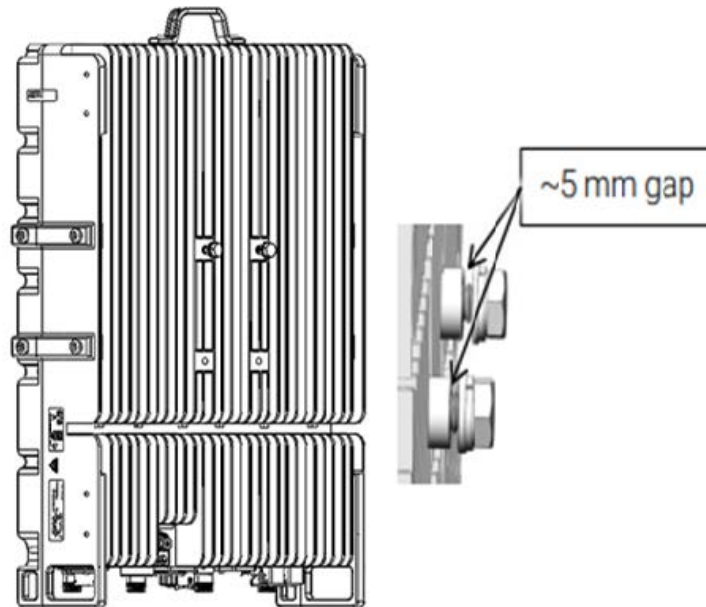
Portrait Mount (on Pole):

1b

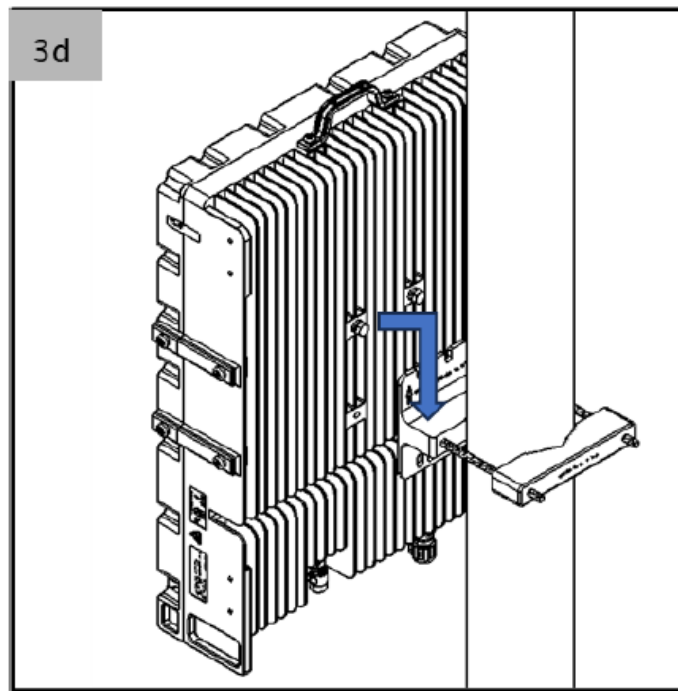


Remove this plastic screws before mounting the bracket

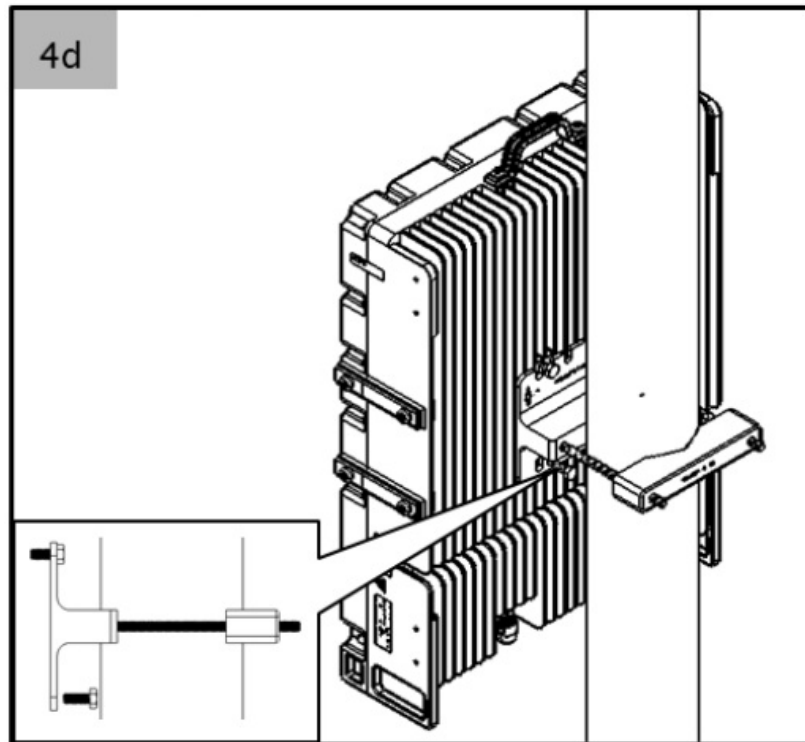
2b



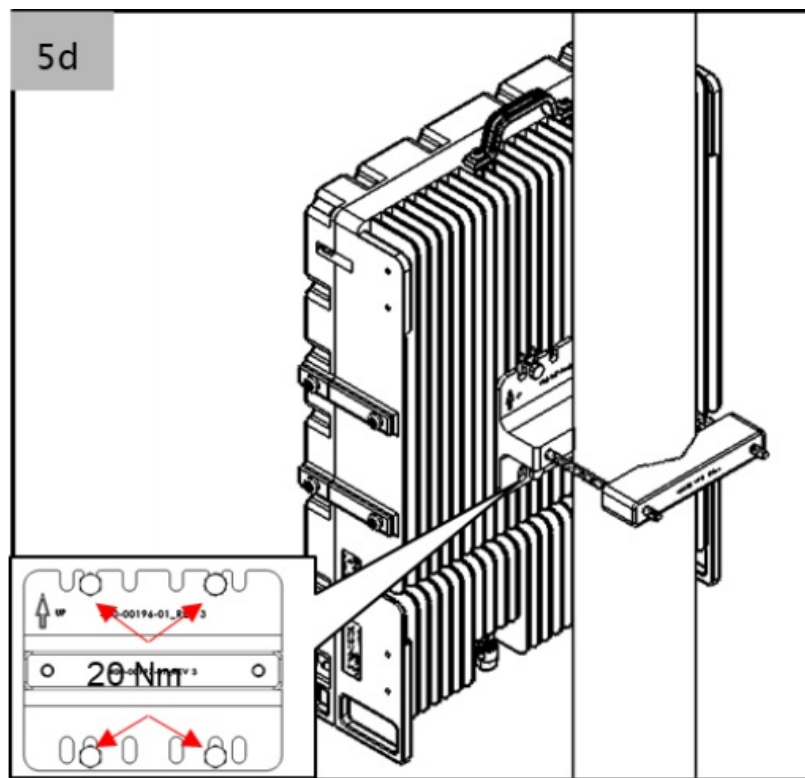
- Screw in the 2x M8X20 screws into the top side mounting boss and leave about 4-5 mm gap to accommodate the mounting bracket.



- Hook the radio unit on to the one side of the mounting bracket key slot

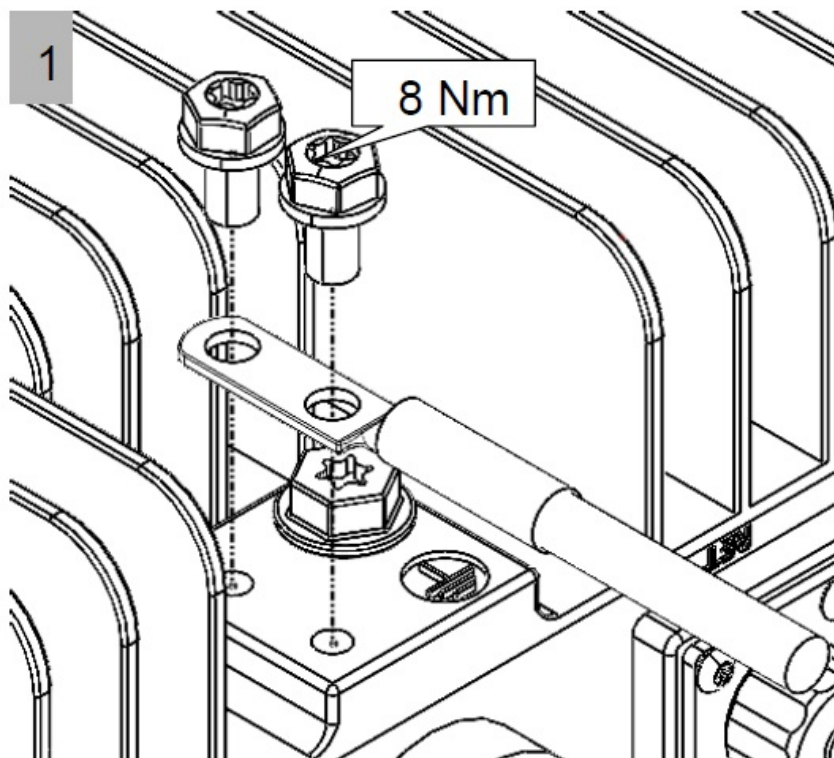


- Insert 2xM8 bolt to the bottom mounting location.



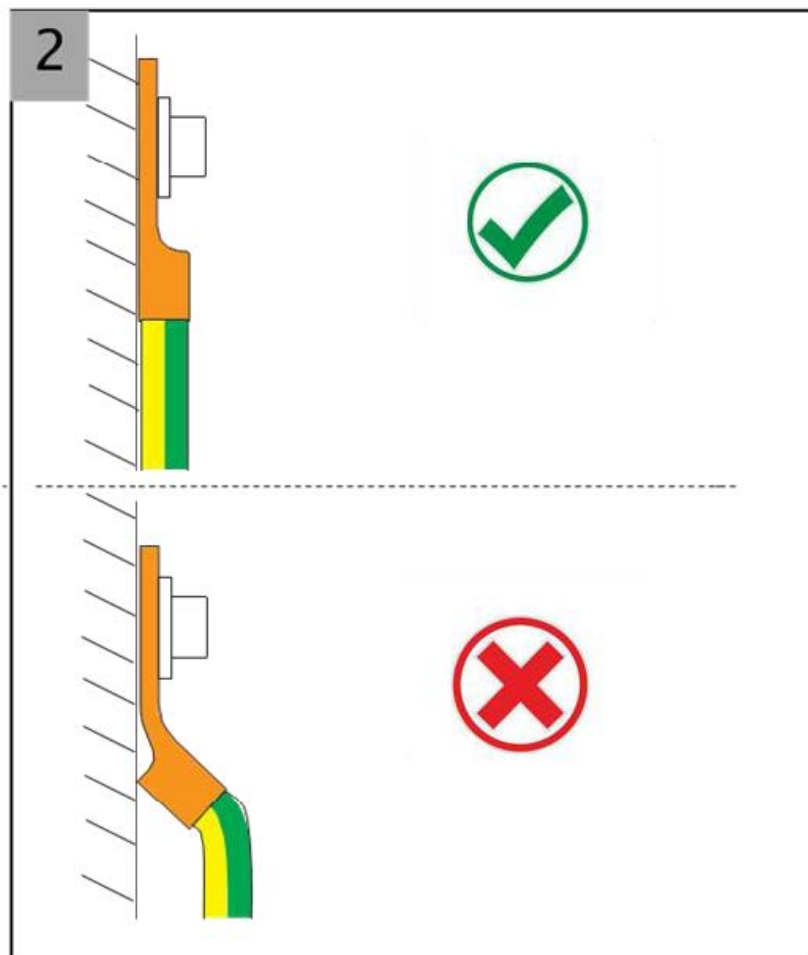
- Tighten all 4x bolts to 20

Installation of the cables

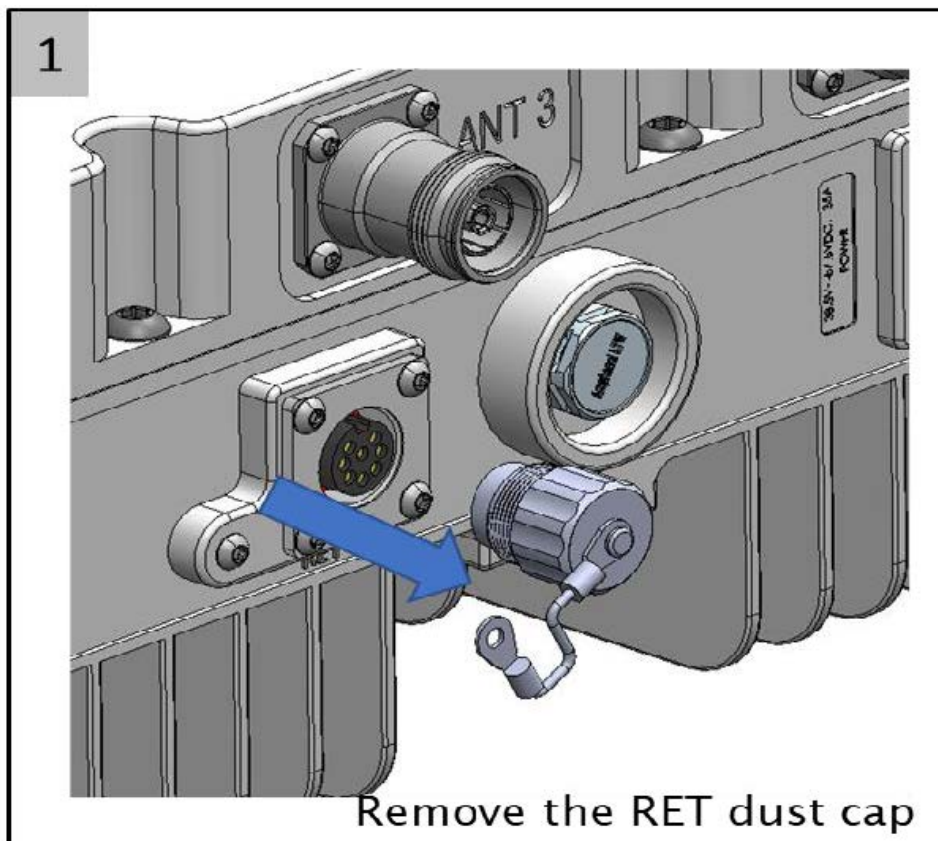


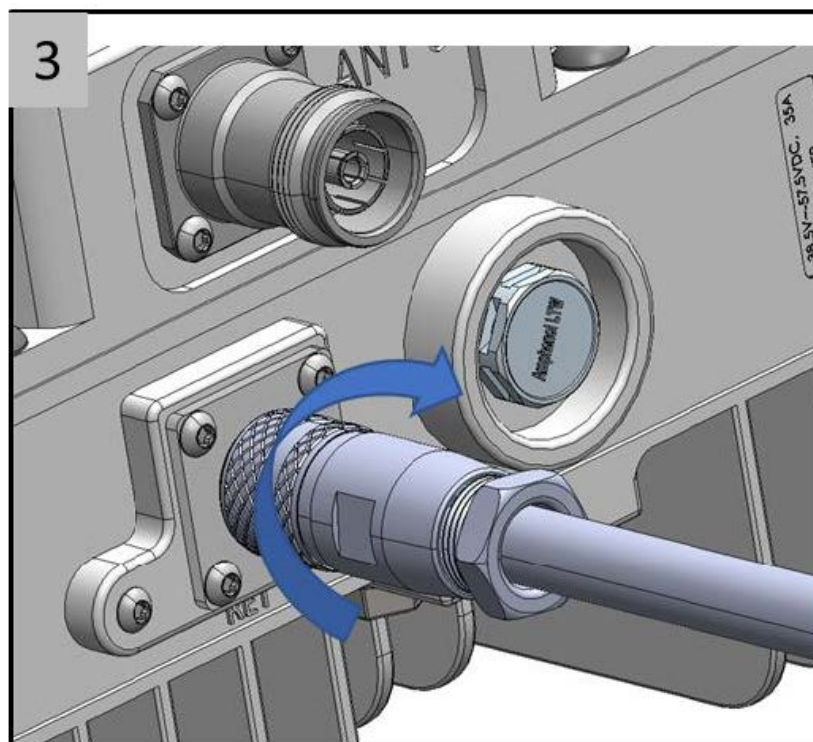
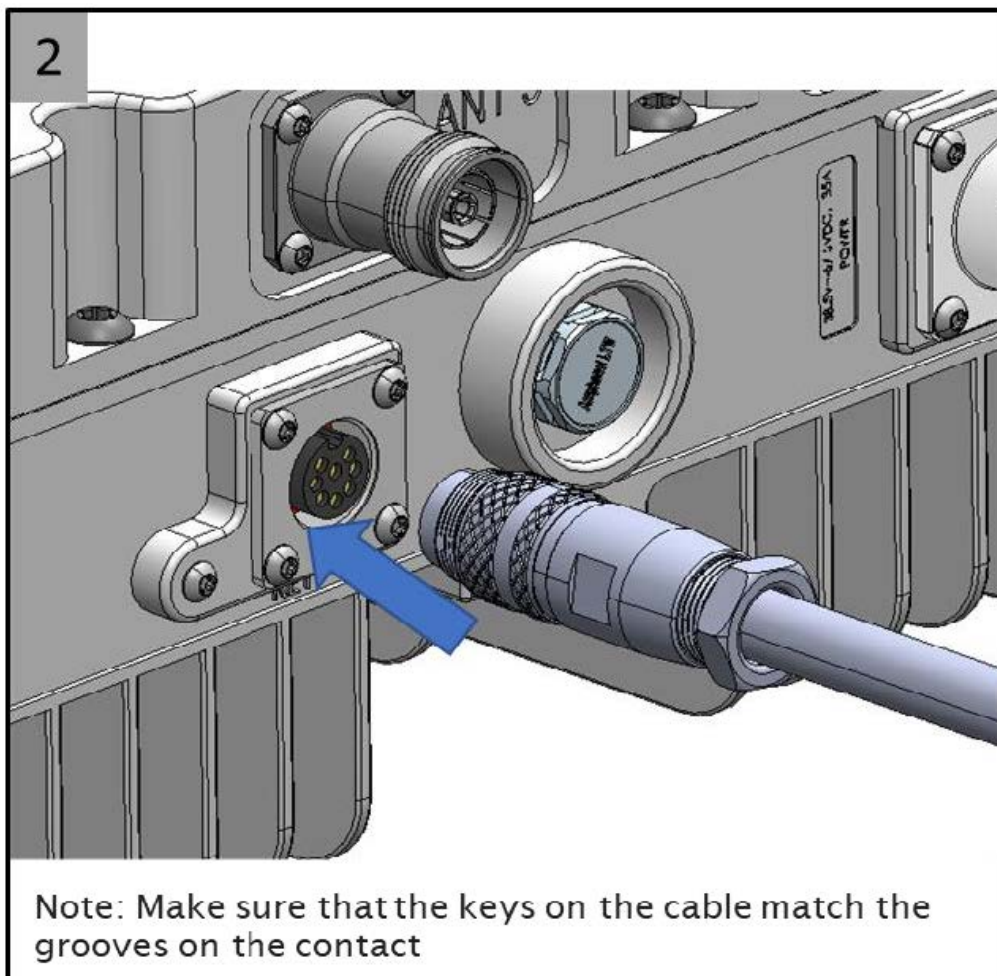
To install the earth cable

Note: The grounding cable size should be greater than 25 square millimeters and the terminal should satisfy 96h neutral salt fog test.



To install the RET cable





Note: Make sure that the connector is properly locked, to avoid bad connection and possible impact from rain or humidity.

To install the power cable

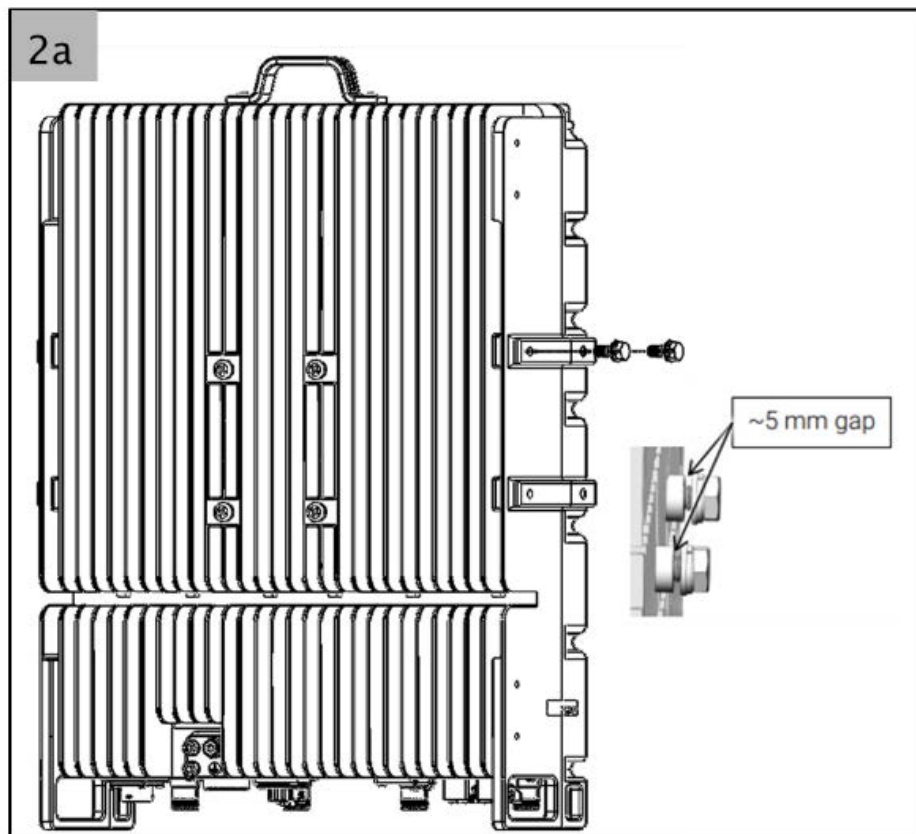
All cables must be shielded. The shielding must be properly connected both to the

power connector and to the grounding interface in the power supply equipment, otherwise the radio overvoltage and lightning protection does not function properly.

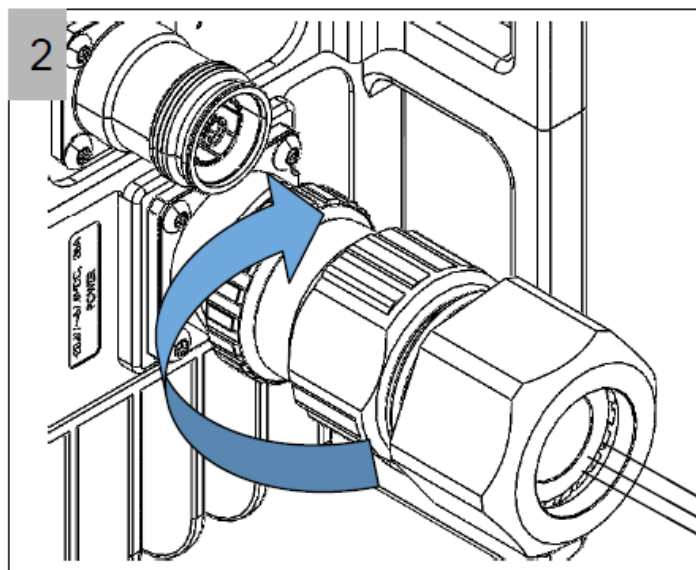
| | |
|----------------------|-----------------------------------|
| DESCRIPTION | CUSTOMER CONFIGURATION SELECTIONS |
| NUMBER OF CONDUCTORS | 2 |
| CABLE GAUGE | 8AWG (<=70m)6AWG (>70m) |
| END 1 CONNECTOR | C10-761296-Z2S OBTS |
| END 2 CONNECTOR | BLUNT CUT |
| TOTAL CABLE LENGTH | CUSTOMER SPECIFIED AS PER SITE |

The pin assignments of power connector port are:

| <i>Connector</i> | <i>Plug kit</i> | <i>Wire Colour</i> |
|-------------------------|------------------------------|---------------------------|
| <i>MPN</i> | <i>C10-761296-Z2S</i> | |
| <i>-48VDC</i> | <i>Pin A</i> | <i>Black</i> |
| <i>+GND</i> | <i>Pin B</i> | <i>Red</i> |

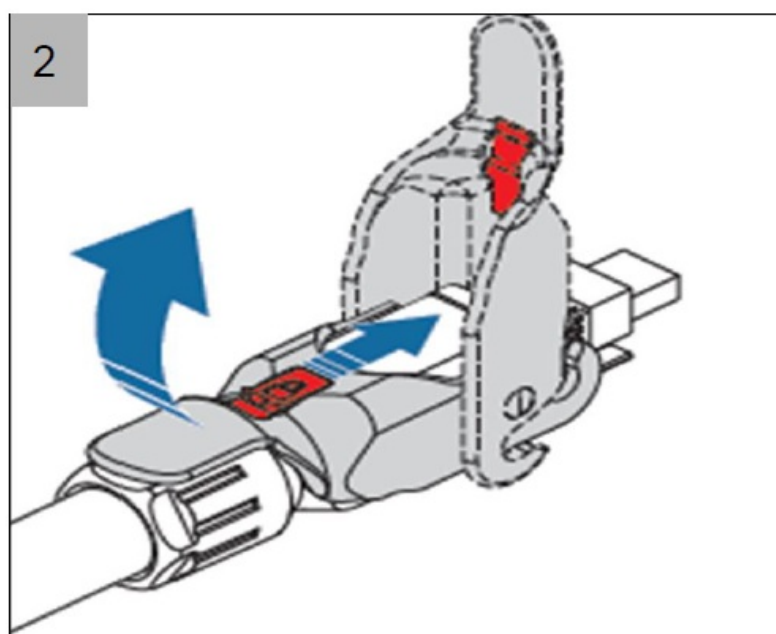
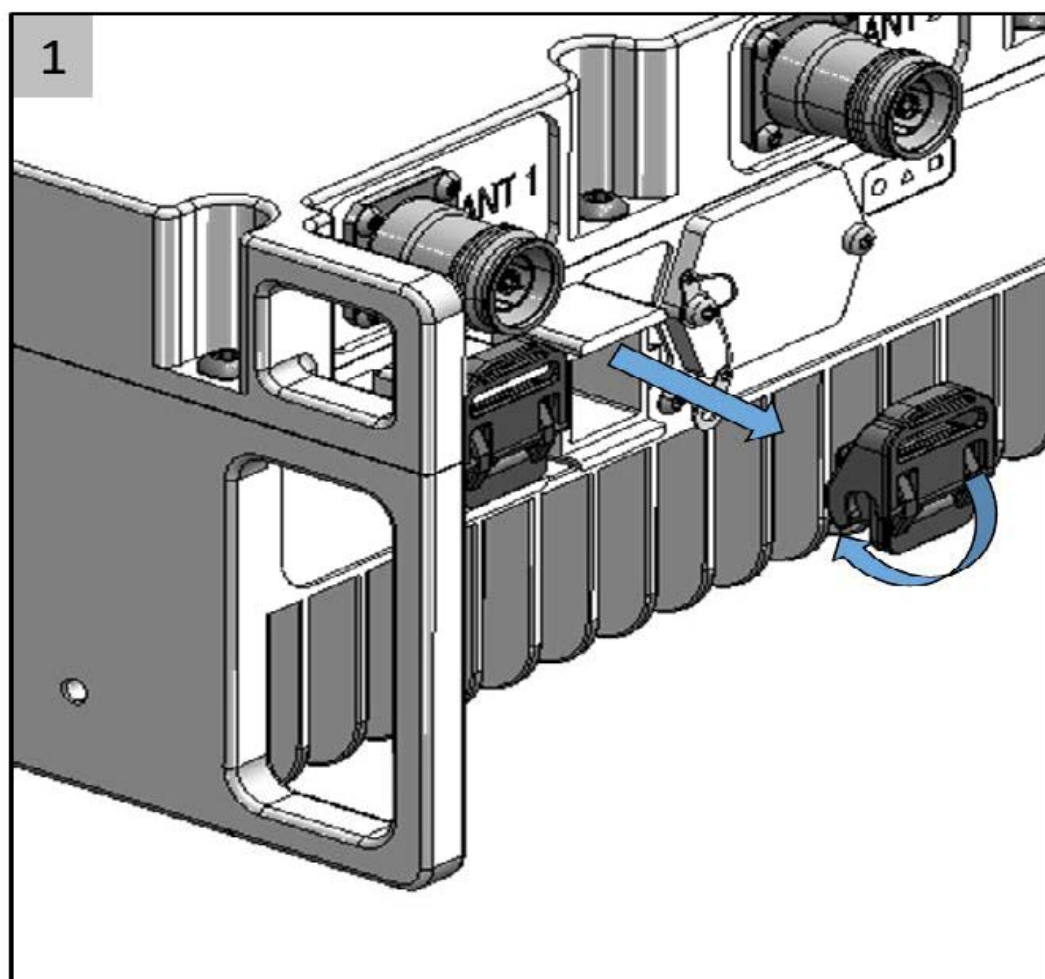


Note: Make sure that the keys on the cable match the grooves on the contact. (Fit A to A, B to B and C to C.)

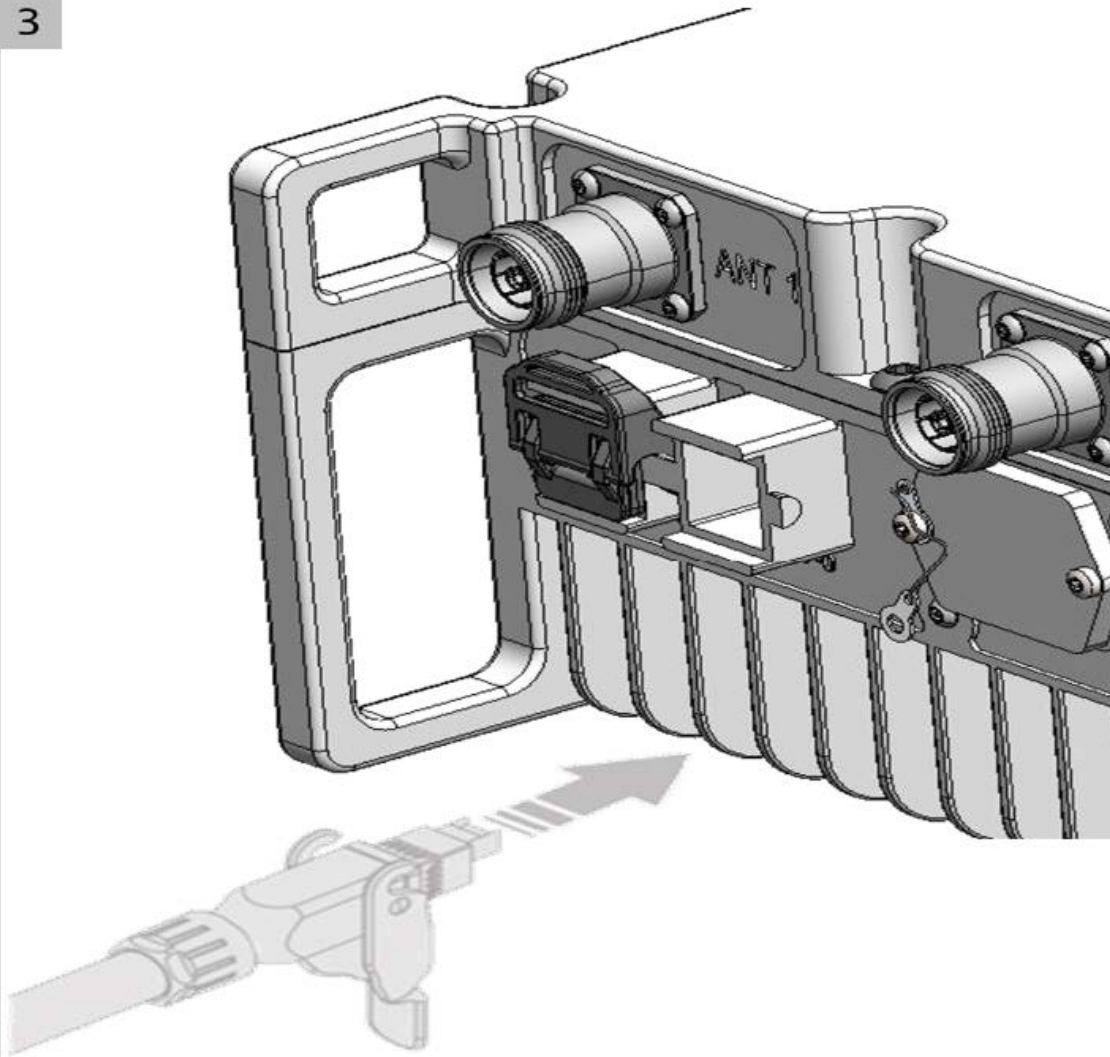


Note: Make sure that the connector is properly locked, to avoid bad connection and possible impact from rain or humidity.

To install the Octis cable (SFP0)

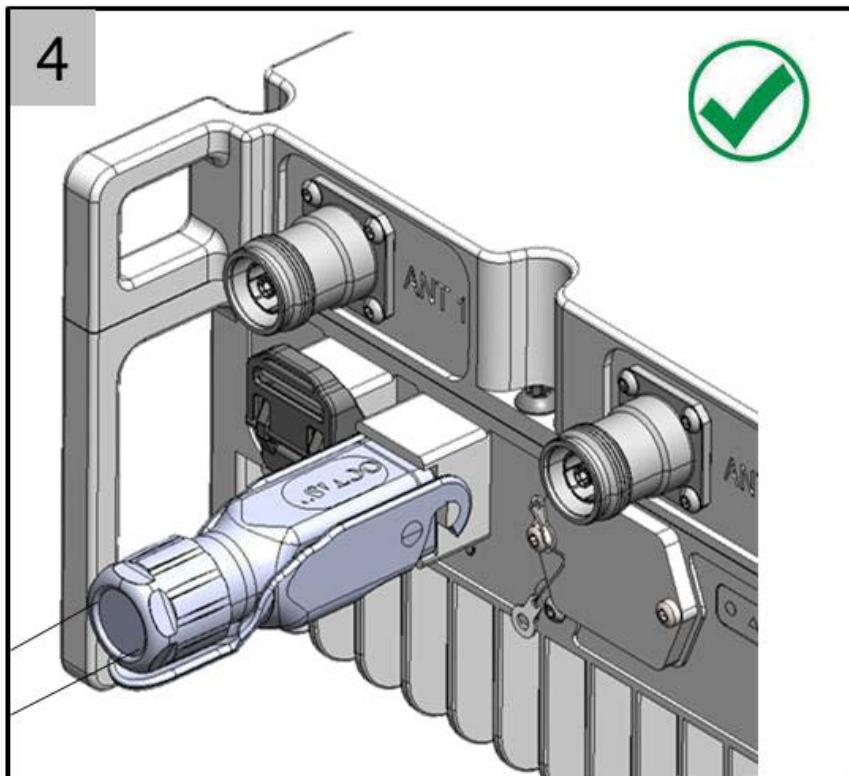


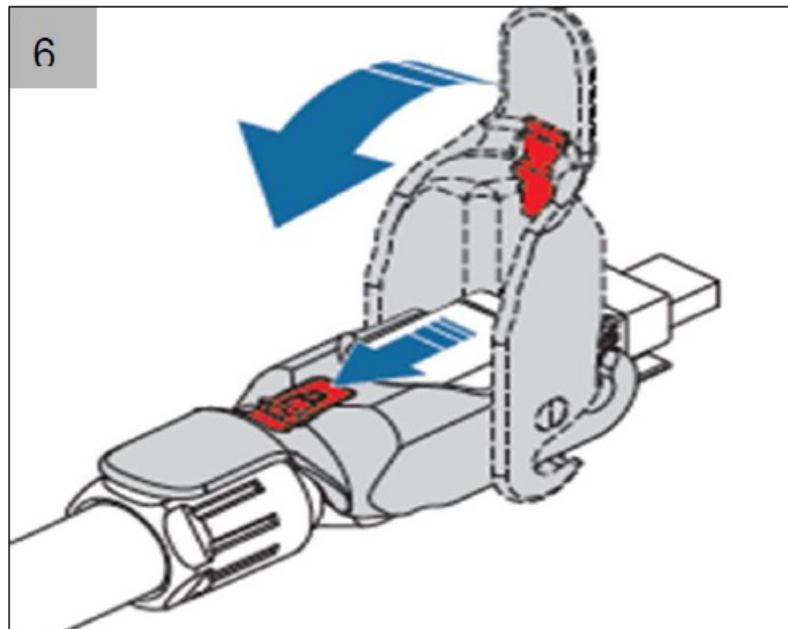
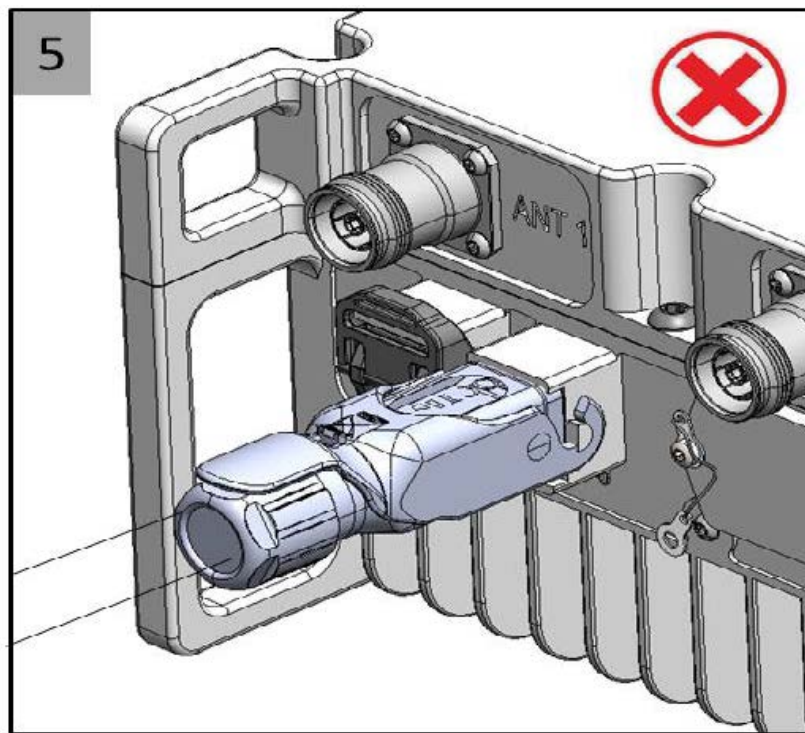
3



Note: Do not remove the cap from SFP1.

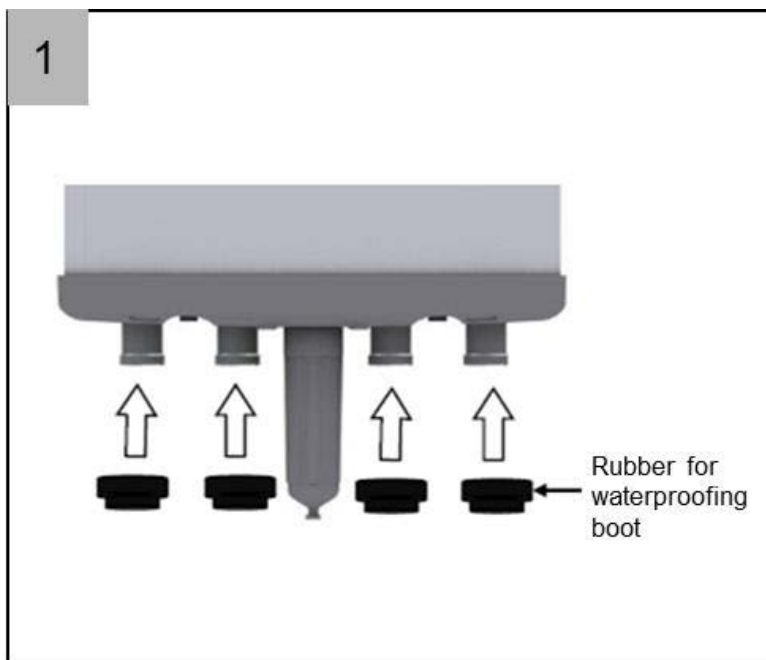
4



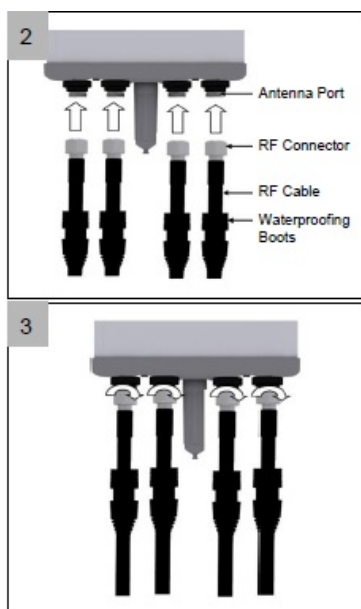


CAUTION: Make sure that a civil engineer or a structural engineer approves the cable route.

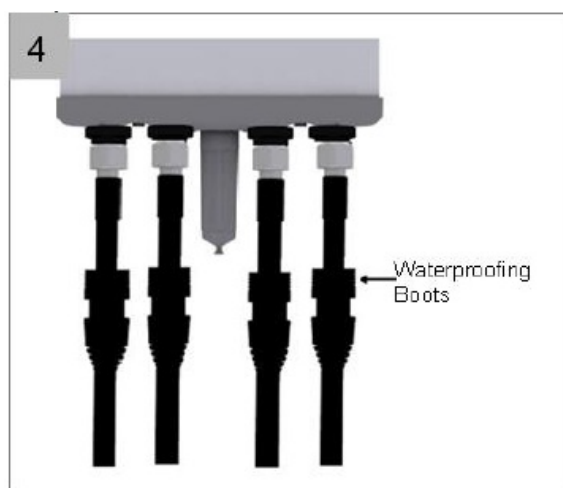
To install the Antenna cables,



Note: Insert the rubber for waterproofing boot to the RF antenna ports



Note: Connect the cables to the RF antenna ports with Torque 5N.m

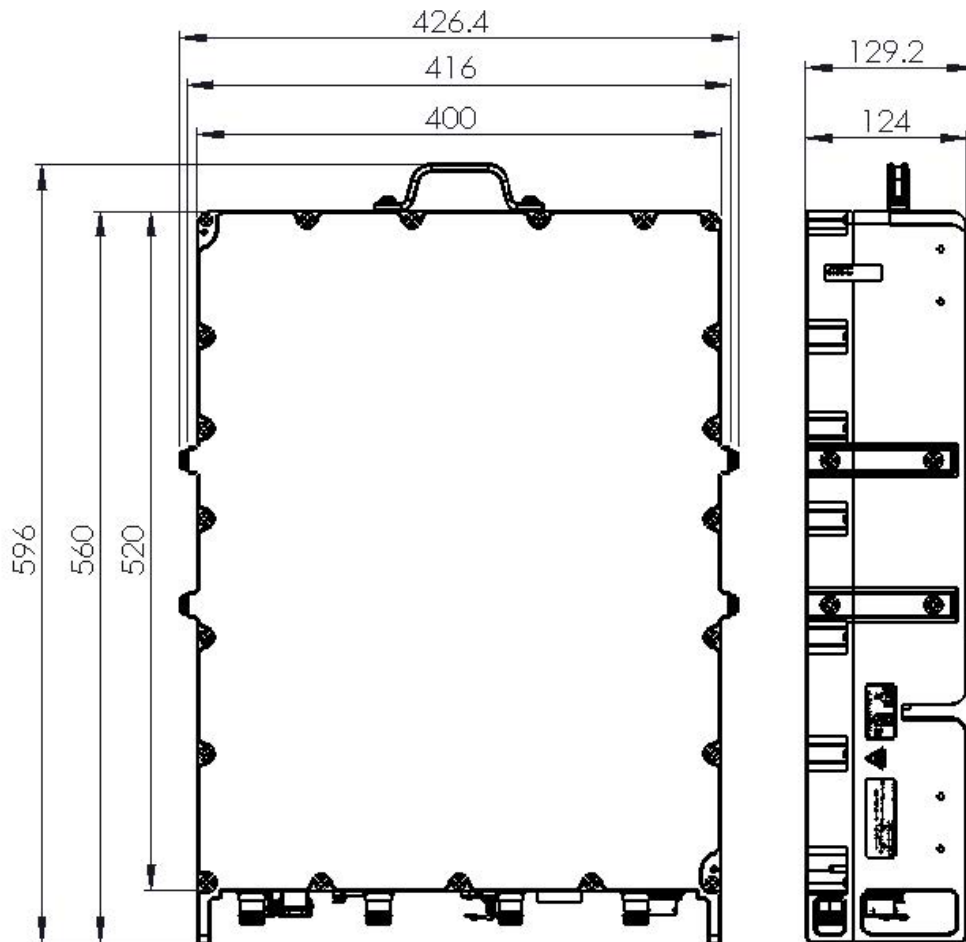


Note: After Connecting the connector push the water proofing boots up to the connectorc .

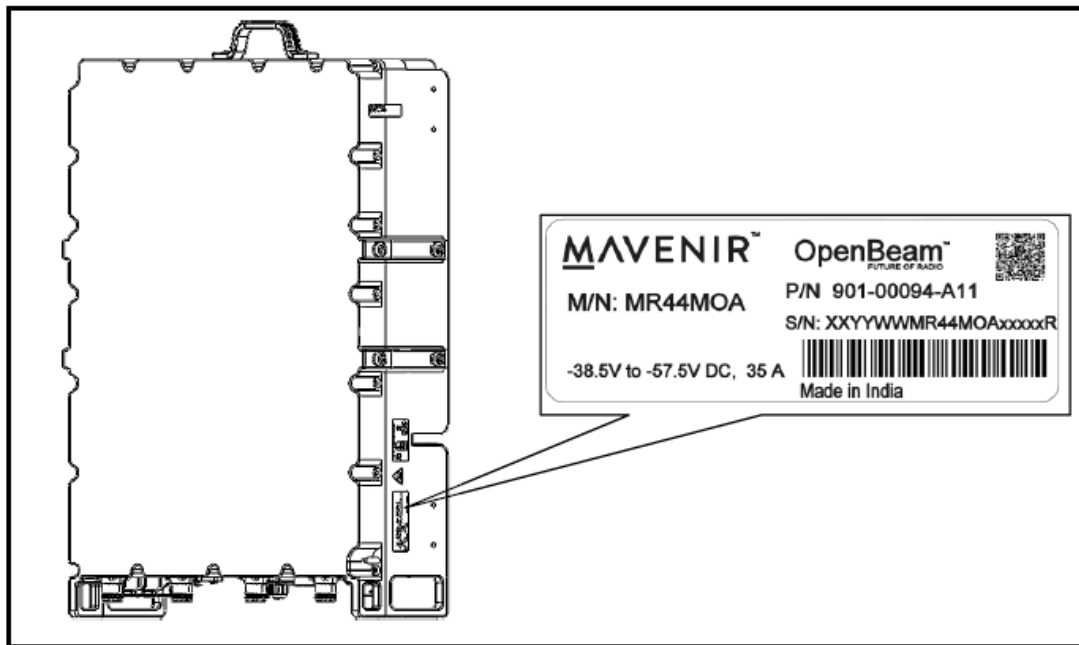
Disposal

Follow local or national regulations when you dispose of the product.

Dimensions



Type plate



To verify the radio installation on site

Examine the grounding system.

| No | Item | YES | N/A |
|----|--------------------------------------------------------------------------------|-----|-----|
| 1 | Is the grounding system installed as specified? | | |
| 2 | Is the radio grounding installed and connected to site Main Earthing Terminal? | | |
| 3 | Is the ground cable area enough for copper cable, or equivalent? | | |
| 4 | Is the Radio System grounded? Are the washers in place and the nuts tightened? | | |
| 5 | Are the ground lugs, terminals, and cable lugs correctly crimped? | | |
| 6 | Is there an unstrapped ground cable longer than 1 m? | | |
| 7 | Are there damage to the insulation of the cables? | | |
| 8 | Are the equipment undamaged and free from contamination? | | |

| | | | |
|---|-------------------------------------------------------------------------------------------------------|--|--|
| 9 | Is the protective ground in the power supply box connected to the Main Earthing Terminal of the site? | | |
|---|-------------------------------------------------------------------------------------------------------|--|--|

Examine the radio.

| No | Item | YES | N/A |
|----|------------------------------------------------------------------------------------------|-----|-----|
| 1 | Is the radio installed as specified? | | |
| 2 | Is the radio clean and undamaged? | | |
| 3 | Is the radio properly aligned horizontally and vertically? | | |
| 4 | Are the equipment labeled as required (as specified in the Customer Site Documentation)? | | |
| 5 | Are protective covers, dust caps, or terminations plugs installed on unused ports? | | |
| 6 | Are the antenna cables routed correctly and undamaged? | | |
| 7 | Are the antenna cables tightened correctly? | | |
| 8 | Is the RET cable routed correctly and undamaged? | | |
| 9 | Is the RET cable tightened? | | |
| 10 | Check that power cable collar is tightened | | |
| 11 | check that all bolts are tightened to stated torque settings | | |
| 12 | is radio clearance to other objects and radios as per separation requirement | | |
| 13 | is product type label still visible after mounting | | |
| 14 | is LED window still visible after mounting | | |

| | | | |
|----|---------------------------------------------------------------|--|--|
| 15 | Are cable rain loops/dips Implemented on connectors facing up | | |
|----|---------------------------------------------------------------|--|--|

Examine the power system.

| No | Item | YES | N/A |
|----|-------------------------------------------------------------------|-----|-----|
| 1 | Is the radio installed as specified? | | |
| 2 | Radio is terminated in the correct positions and labeled? | | |
| 3 | Is the ground cable tightened? | | |
| 4 | Are the power sockets secure and correctly attached to the radio? | | |

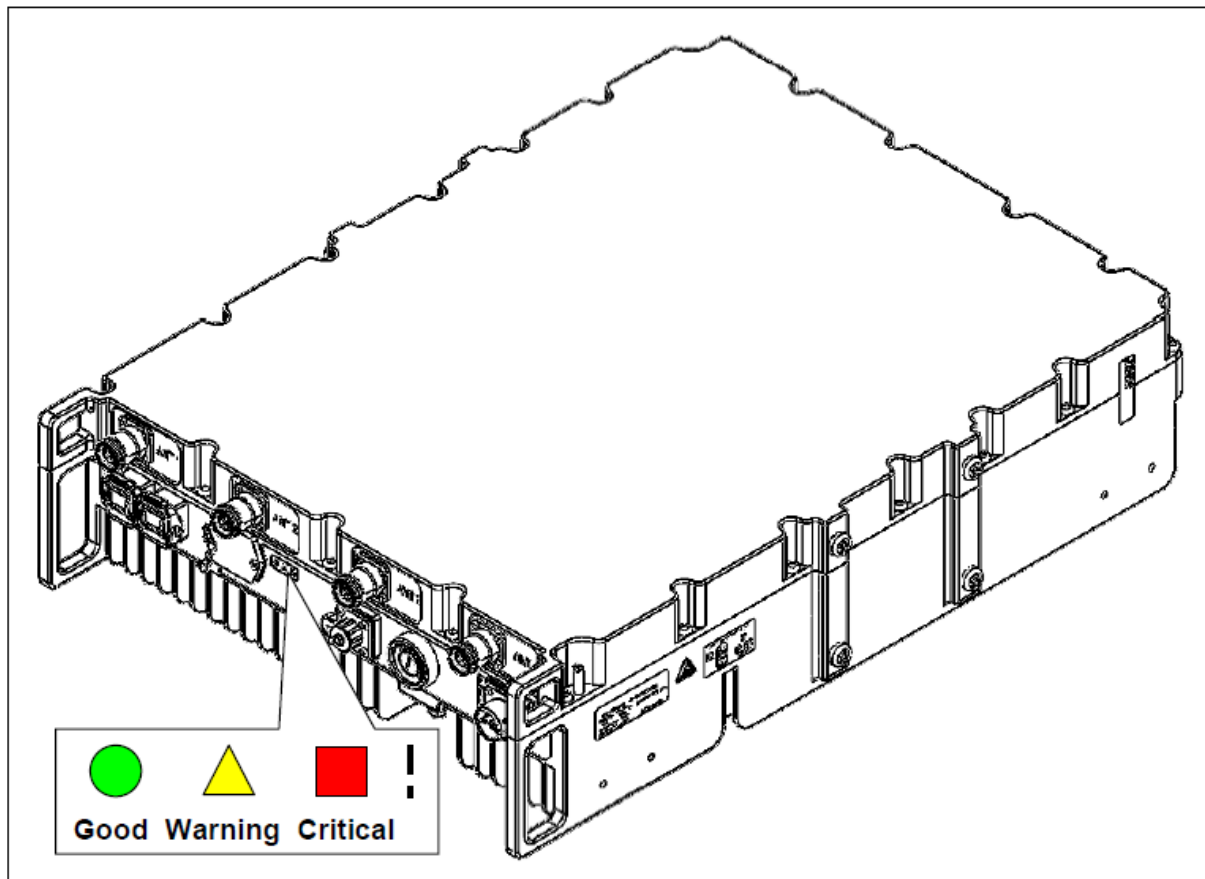
Power up the radio

Make sure the radio is grounded according to instructions. Switch on the external power to the radio on both power feeds.

Note: Products not connected to ground risk damage from overvoltage or overcurrent. Always ground products. according to instructions.

Examine the radio after powering up.

Once the power has been switched on, the radio is loaded with the specific software. Optical LED indicators show the status of the radio



MAVENIR-MR44MOA-Macro-Remote-Radio-Unit- (2)

www.mavenir.com

- **U.S.A. contact:**

Mavenir Systems, Inc.
1700 International
Pkwy,
Richardson, Texas, TX 75081, USA

- **European contact:**

Deny Cargo C/O Mavenir Systems Inc Bedrijvenzone Machelen Cargo 751 1830
Machelen, Belgium

Copyright

Copyright © Mavenir 2023. All rights reserved. This document is protected by international copyright law and may not be reprinted, reproduced, copied, or utilized in whole or in part by any means including electronic, mechanical, or other means without the prior written consent of Mavenir. Whilst reasonable care has been taken by Mavenir to ensure the information contained herein is reasonably accurate, Mavenir shall not, under any circumstances be liable for any loss or damage (direct or consequential)

suffered by any party as a result of the contents of this publication or the reliance of any party thereon or any inaccuracy or omission therein. The information in this document is therefore provided on an “as is” basis without warranty and is subject to change without further notice and cannot be construed as a commitment by Mavenir. The products mentioned in this document are identified by the names, trademarks, service marks and logos of their respective companies or organizations and may not be used in any advertising or publicity or in any other way whatsoever without the prior written consent of those companies or organizations and Mavenir.

© Copyright Mavenir


All rights reserved Mavenir reserves the rights to alter their products without notice. This also applies to products already ordered, as long as it does not affect the previously agreed specifications.

FAQ

Q: What tools are needed for installation?

A: Torque wrench M6 8Nm, Torx T30, socket 10 mm, wrench (10 mm, 13 mm, 16 mm, 18 mm), hex key, screwdrivers (Flat and Torx), power drill, level bar, adjustable wrench, wire stripper, knife, steel tape measure, optical connection cleaner, ESD wrist strap, tape, safety harness, safety helmet.

Documents / Resources

| | |
|-------------------------------------------------------------------------------------|--------------------------------------------------------------------------------------------------------------------------------------------------------------------------------------|
|  | MAVENIR MR44MOA Macro Remote Radio Unit [pdf] Installation Guide MR44MOA Macro Remote Radio Unit, MR44MOA, Macro Remote Radio Unit, Remote Radio Unit, Radio Unit |
|-------------------------------------------------------------------------------------|--------------------------------------------------------------------------------------------------------------------------------------------------------------------------------------|

References

- [M Trust the Future | Mavenir](#)
- [M Trust the Future | Mavenir](#)
- [User Manual](#)

MAVENIR

Macro Remote Radio Unit, MAVENIR, MR44MOA, MR44MOA Macro Remote Radio Unit, radio unit, Remote Radio Unit

—Previous Post

MAVENIR B12 4T4R RRH Handling Mounting Grounding Powering and Cabling Installation Guide

Leave a comment

Your email address will not be published. Required fields are marked *

Comment *

Name

Email

Website

☐ Save my name, email, and website in this browser for the next time I comment.

Post Comment

Search:

Search

[Manuals+](#) | [Upload](#) | [Deep Search](#) | [Privacy Policy](#) | [@manuals.plus](#) | [YouTube](#)

This website is an independent publication and is neither affiliated with nor endorsed by any of the trademark owners. The "Bluetooth®" word mark and logos are registered trademarks owned by Bluetooth SIG, Inc. The "Wi-Fi®" word mark and logos are registered trademarks owned by the Wi-Fi Alliance. Any use of

these marks on this website does not imply any affiliation with or endorsement.