



MAULsource 826 58 Magnifying Lamp with Clamping Base Instructions

[Home](#) » [MAUL](#) » MAULsource 826 58 Magnifying Lamp with Clamping Base Instructions 

Contents

- [1 MAULsource 826 58 Magnifying Lamp with Clamping Base](#)
- [2 Product Usage Instructions](#)
- [3 Overview](#)
- [4 Documents / Resources](#)
 - [4.1 References](#)
- [5 Related Posts](#)



MAULsource 826 58 Magnifying Lamp with Clamping Base



Specifications

- Model: MAULsource 826 58
- Power: 24V 0.6A
- Operating Voltage: 220 – 240V~ 50/60 Hz
- LEDs: 60
- Focusing Range: 10 – 63 mm
- Cable Length: Approximately 1.8 m
- Plug Type: CEE 7/16

Product Usage Instructions

Power On/Off:

Use the ON/OFF switch to power the device on and off.

Focusing

Adjust the focusing range between 10mm to 63mm to achieve the desired lighting effect.

LED Lights

The product features 60 LEDs for bright and efficient lighting.

Cable Connection

Connect the provided cable, approximately 1.8m in length, to a suitable power source (220 – 240V~ 50/60 Hz).

FAQ

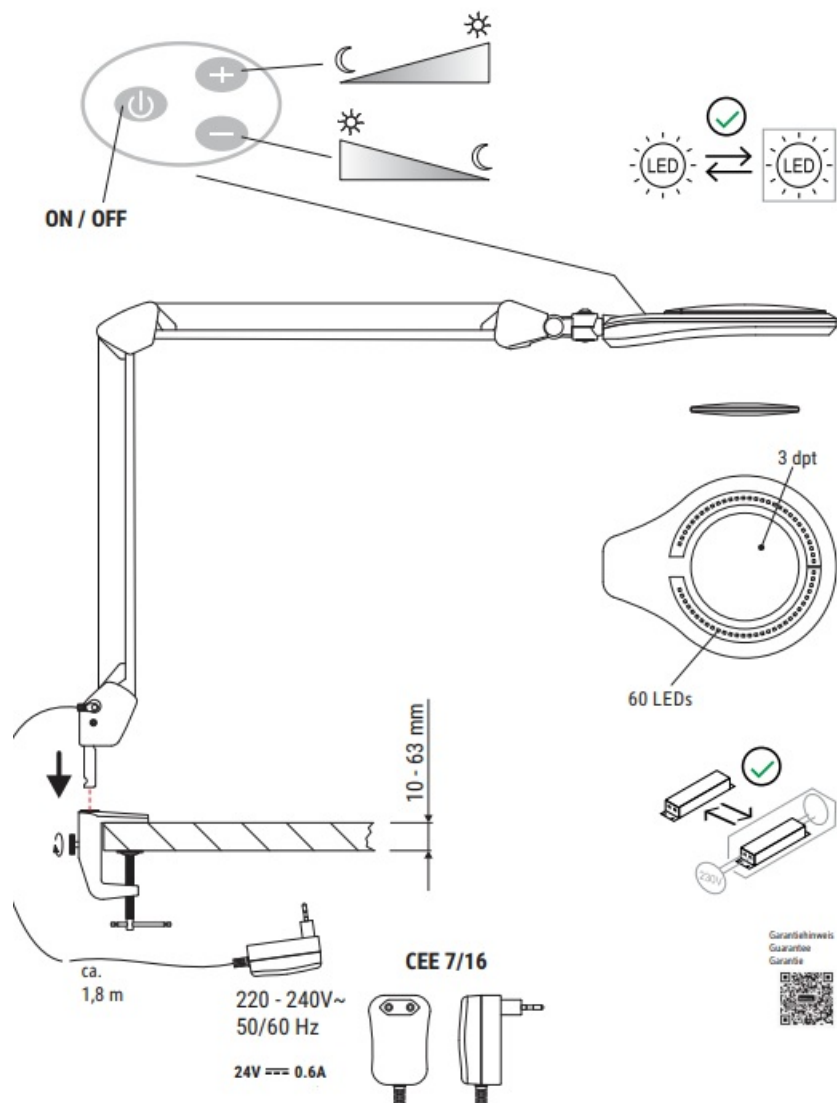
Q: Are spare parts available for this product?

A: Yes, spare parts are available. The following spare parts can be ordered:

- Art.-No.: 8265809.200
- Art.-No.: 8265809.215
- Art.-No.: 8265809.220

MAULsource 826 58

Overview



www.maul.de



This product contains a light source of energy efficiency class < E >

(spare parts):



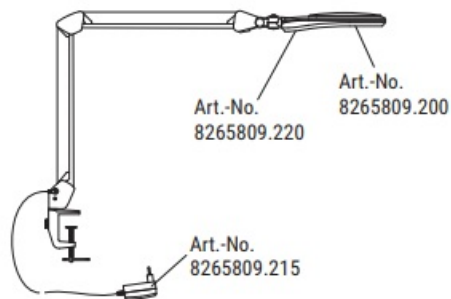
Art.-No.: 8265809.200



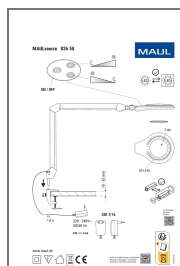
Art.-No.: 8265809.220



Art.-No.: 8265809.215



Documents / Resources



[MAUL MAULsource 826 58 Magnifying Lamp with Clamping Base](#) [pdf] Instructions
MAULsource 826 58 Magnifying Lamp with Clamping Base, MAULsource 826 58, Magnifying L
amp with Clamping Base, Lamp with Clamping Base, Clamping Base

References

- [User Manual](#)

[Manuals+.](#) [Privacy Policy](#)

This website is an independent publication and is neither affiliated with nor endorsed by any of the trademark owners. The "Bluetooth®" word mark and logos are registered trademarks owned by Bluetooth SIG, Inc. The "Wi-Fi®" word mark and logos are registered trademarks owned by the Wi-Fi Alliance. Any use of these marks on this website does not imply any affiliation with or endorsement.