

 **B0DFPXH8C7 Smart
Setup Thread Smart
Switch**



matter B0DFPXH8C7 Smart Setup Thread Smart Switch User Guide

[Home](#) » [matter](#) » matter B0DFPXH8C7 Smart Setup Thread Smart Switch User Guide 

Contents

- [1 Matter B0DFPXH8C7 Smart Setup Thread Smart Switch](#)
- [2 Specifications](#)
- [3 Product Usage Instructions](#)
- [4 Product Description](#)
- [5 Basic Product Functions](#)
- [6 Reset](#)
- [7 Add to Alexa via matter](#)
- [8 Add to Apple via Matter](#)
- [9 Add to Google via Matter](#)
- [10 App Distribution Network](#)
- [11 How to install the switch](#)
- [12 Product parameters](#)
- [13 Documents / Resources](#)
 - [13.1 References](#)
- [14 Related Posts](#)



Matter B0DFPXH8C7 Smart Setup Thread Smart Switch



Specifications

- **Standard Protocol:** Matter
- **Certification:** CSA Certified
- **Compatibility:** Alexa, Apple Home, Google Home, SmartThings, Samsung Smart Home

Product Usage Instructions

Basic Product Functions:

- **Voice Control:**
Control the device using voice commands through Alexa, Siri, Google Assistant, or other Matter-certified devices.
- **App Control:**
Manage the device through apps like Alexa, Apple Home, Google Home, SmartThings, or other Matter SDK-compatible apps.
- **Device Reset:**
Press and hold the switch button for 10 seconds to reset. The indicator light will flash 3 times to confirm the reset.
- **Device Pairing:** Each device has a Matter QR code and an 11-digit short code for binding. Use the corresponding app to scan the QR code or enter the short code for pairing.
- **Reset:**
To reset the device, press and hold the switch button for 10 seconds until the LED flashes to factory reset the Smart Switch.

Add to Alexa via Matter:

Environment Check:

1. Alexa App version must be 2.2.491118.0 or higher.
2. Require a Matter control hub.

Initiation Steps:

1. Check compatibility with supported Echo devices.
2. Follow the specific instructions for adding the Smart Switch to Alexa via Matter.

Product Description

Smart Switch is developed according to the Matter standard protocol and has passed Matter certification of CSA. They can be bound and controlled through ecosystem platforms such as the Alexa App/Echo, Apple Home App/Home Pod Mini, Google Home App/Google Nest Hub, and Smart Things App/Samsung Smart Home Hub.

Basic Product Functions

- **Voice control:**

The device can be controlled by voice through Alexa, Siri, Google Assistant, or other devices that have passed Matter certification App control. Device control can be achieved through Alexa, Apple Home, Google Home, SmartThings, or other apps that have already solved the Matter SDK.

- **Device reset:**

Press and hold the switch button for 10 seconds to reset, with the indicator light flashing 3 times to indicate a reset.

- **Device pairing:** There is a Matter QR code and an 11-digit short code on each device. To bind a device, you can use the matching App to scan the QR code or enter the 11-digit short code for pairing and binding.

Reset

- Press to turn the socket ON or OFF.
- Press and hold(for 10 seconds) until the LED flashes to initiate the factory reset of the Smart Switch.

Add to Alexa via matter

Check the environment

1. The version of the Alexa App is greater than or equal to 2.2.491118.0.
2. Having a Matter control hub, any of the following devices can be used:

Device	Version
Echo	Echo (4th gen) Echo Hub
	Echo Plus (2nd gen) Echo Show 8 (3rd gen) Echo Show 10 (3rd gen) Echo Studio
	Eero 6, eero 6+, eero Pro 6, eero Pro 6E, eero Max 7

Add to Apple via Matter

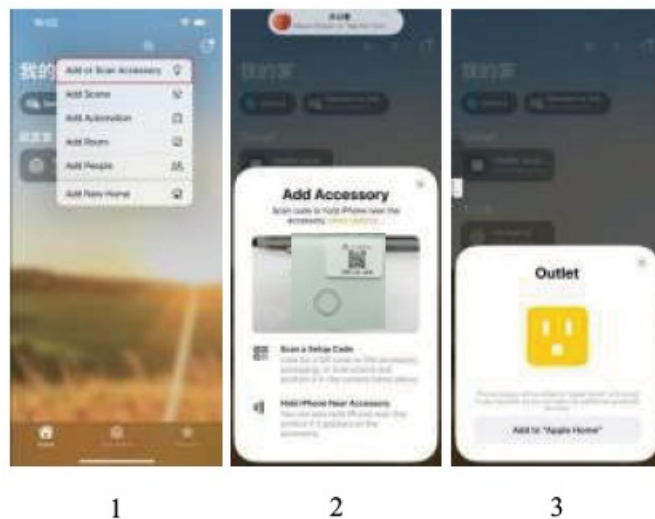
Check the environment. Frequently Asked Questions

1. The system version of the Apple phone is greater than or includes version 16.2.
2. Having a Matter control hub, any of the following devices can be used: Home Pod, Home Pod mini, Apple TV.

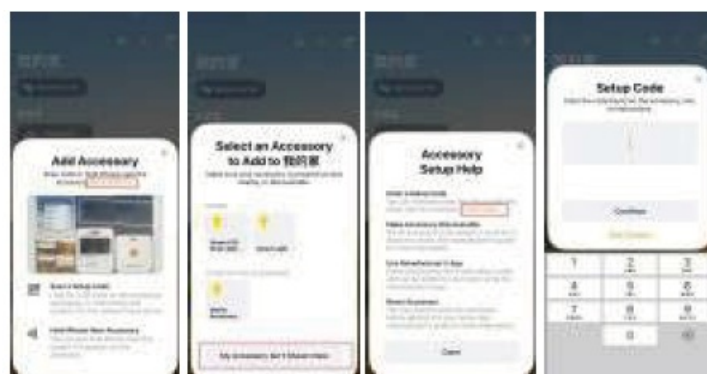
Network configuration

1. **Step 1:** Put the device in pairing mode.
2. **Step 2:** Launch your Home App. TAP the “+” and tap “Add or Scan Accessory”.
3. **Step 3:** Scan the setup QR code on your device.
4. **Step 4:** Choose a location for your device and give it a name.

QR code pairing interface:



1. **Step 1:** Launch your Home App. TAP the “+” and tap “Add or Scan Accessory”.
2. **Step 2:** Choose “More Options” and click “My Accessories” to display it here.
3. **Step 3:** Choose “Enter Code” to enter the pairing code pairing interface. Then, follow the prompts to add it.



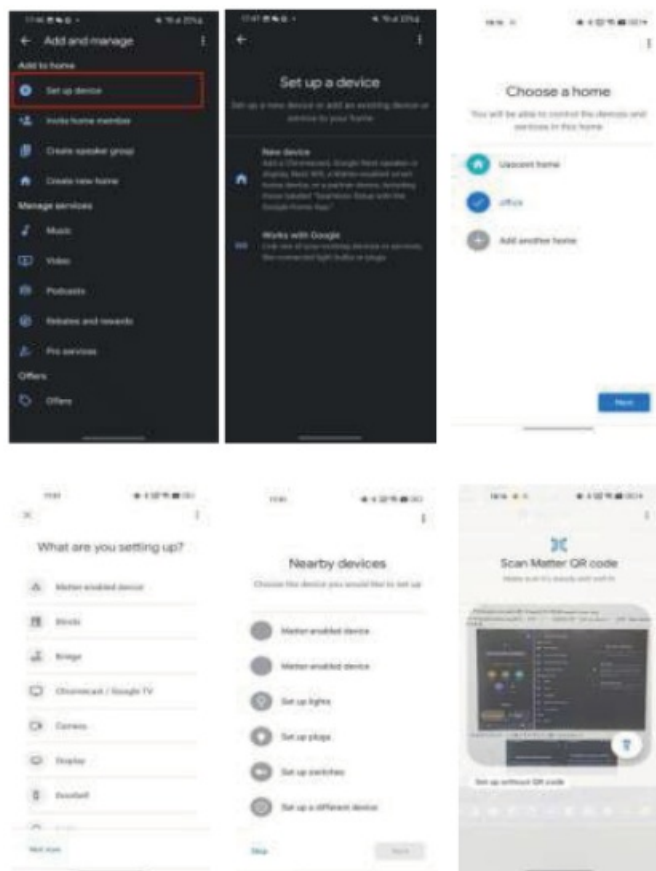
Add to Google via Matter

Check the environment

1. Install the Google Home app.
2. Have a control hub that supports Matter, and any of the following devices will suffice: Nest Hub (2nd gen), Nest Hub Max, Nest Wifi, and Nest Wifi Pro

App Distribution Network

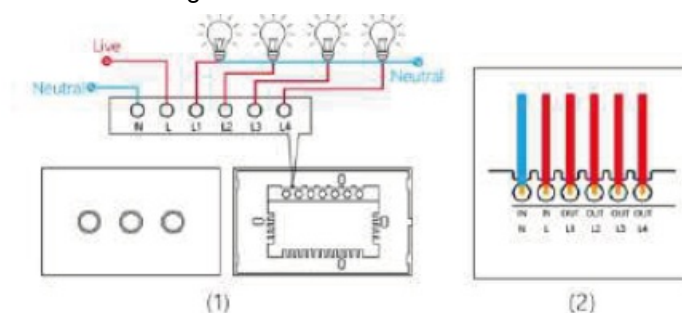
1. **Step 1:** Launch your Google Home App and tap “+”.
2. **Step 2:** Choose “Set up device” and tap “New device” to add a new device
3. **Step 3:** Choose Matter and tap “Yes” on the confirming page
4. **Step 4:** Scan the setup QR code on your device. If your device comes without a QR code but a numeric code, you can tap “Set up” without the QR code and enter the numeric code.
4. **Step 5:** Tap Done when the device is connected.



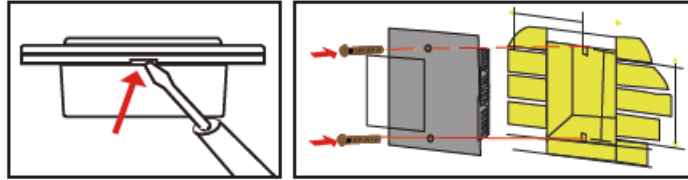
How to install the switch

wiring:

1. Connect wire to the correct terminal and tighten the screws.



2. Fix the switch to the wall




Product parameters

- **Working voltage:** AC 100-240V 50-60Hz
- **Maximum power:**1000w/gang
- **Product power consumption:**0.5W
- **Working temperature:**-10'C-60°C
- **Shell material:** PCfame retardant materia
- **Size:**120*72*32.5mm

Q: How do I install the switch?

A: Follow the wiring instructions provided with the product. Connect the wires to the correct terminals and tighten the screws securely.

Documents / Resources

	matter B0DFPXH8C7 Smart Setup Thread Smart Switch [pdf] User Guide B0DFPXH8C7 Smart Setup Thread Smart Switch, B0DFPXH8C7, Smart Setup Thread Smart Switch, Setup Thread Smart Switch, Thread Smart Switch, Smart Switch, Switch
---	---

References

- [User Manual](#)

[Manuals+](#), [Privacy Policy](#)

This website is an independent publication and is neither affiliated with nor endorsed by any of the trademark owners. The "Bluetooth®" word mark and logos are registered trademarks owned by Bluetooth SIG, Inc. The "Wi-Fi®" word mark and logos are registered trademarks owned by the Wi-Fi Alliance. Any use of these marks on this website does not imply any affiliation with or endorsement.