

MATTER MADE 1CH Switch Module Instruction Manual

Contents

1 INSTRUCTION MANUAL

1.1 Matter Switch Module(1CH,2CH,3CH,4CH)

1.1.1 TECHNICAL SPECIFICATIONS

1.1.2 1CH Matter Switch Module

1.1.3 INSTALLATION

1.1.4 2CH Matter Switch Module

1.1.5 3CH Matter Switch Module

1.1.6 4CH Matter Switch Module

1.1.6.1 Home APP Instruction (1)

1.1.6.2 Scan the device QR code to add (2)

1.1.6.3 Add via Serial number (3)

1.1.6.4 (4)

1.1.6.5 Share device (5)

1.1.6.6 FAQ

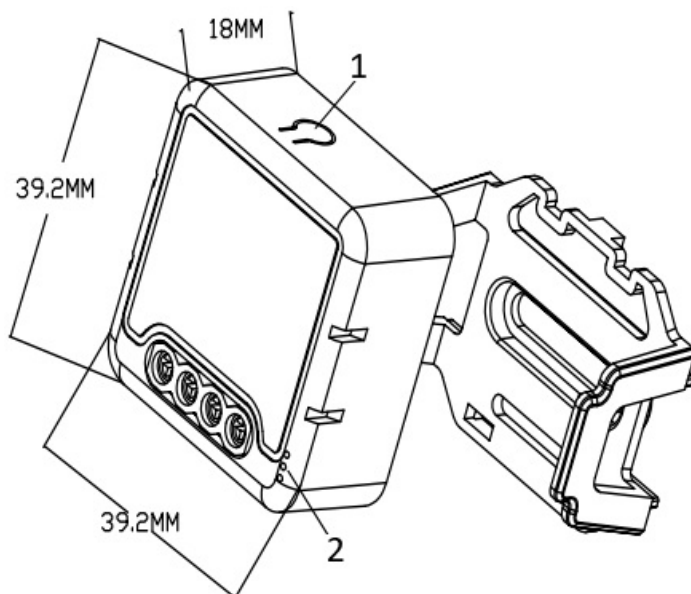
2 Documents / Resources

2.1 References

3 Related Posts

INSTRUCTION MANUAL

Matter Switch Module (1CH,2CH,3CH,4CH)



Mounting Clip

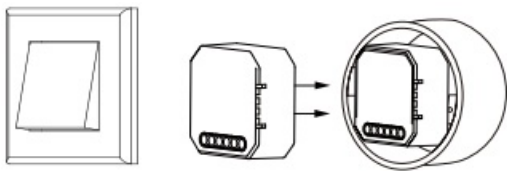
1. Reset Key

2. Indicator Light

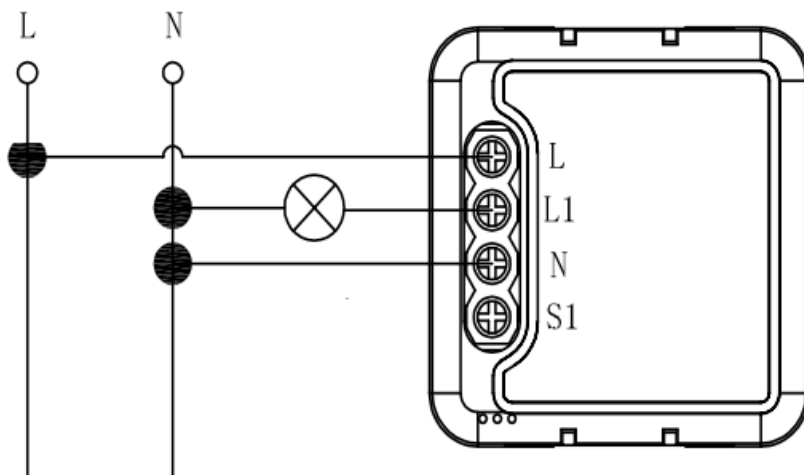


Wiring Instructions and Diagrams

1. Turn off the power supply before carrying out any electrical installation work.
2. Connect wires according to the wiring diagram.
3. Insert the module into the junction box.
4. Turn on the power supply and follow switch module configuration instructions.



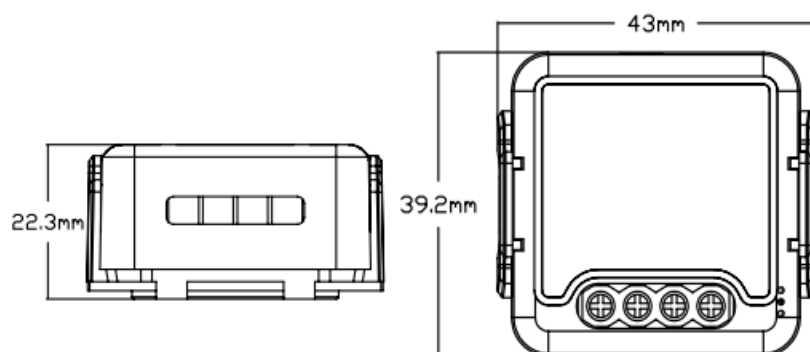
Without Switch



TECHNICAL SPECIFICATIONS

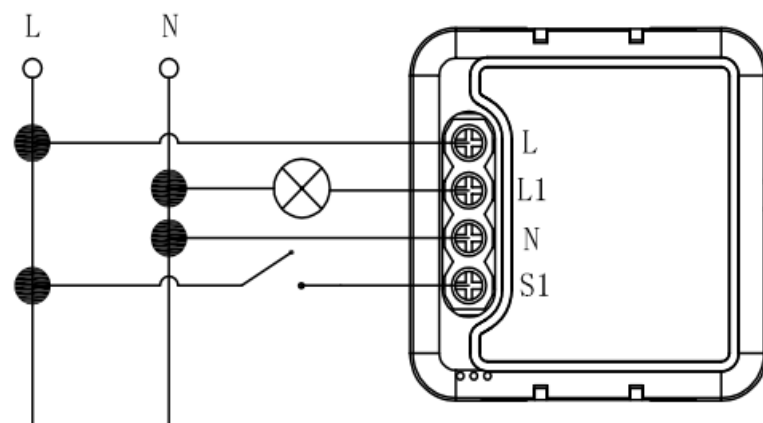
Product type	Matter Switch Module
Voltage	AC100-240V 50/60Hz
Max. load	☀ 1CH : 16A 2CH : 2x5A 3CH : 3x3.3A 4CH : 4x2.5A
Operation frequency	2.412GHz-2.484GHz
Operation temp.	-10°C + 40°C
Protocol	Matter
Operation range	<100m
Dims (WxDxH)	39.2×39.2×18 mm
IP rating	IP20
Warranty	2years
Certificates	CE ROHS

with mounting clip

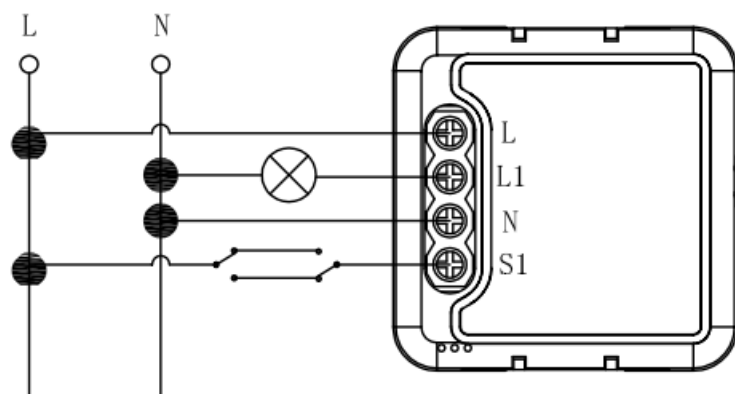


1CH Matter Switch Module

Single Control



Double Switch



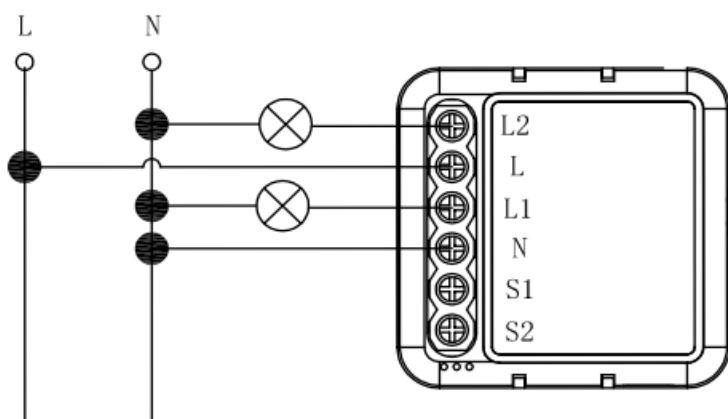
INSTALLATION

Warnings:

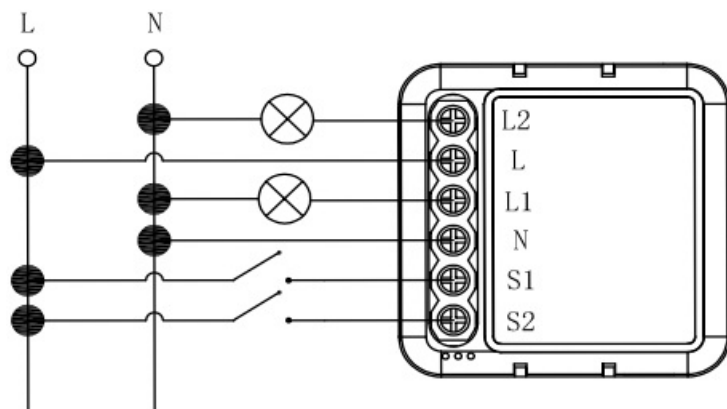
1. Installation must be carried out by a qualified electrician in accordance with local regulations.
2. Keep the device out of reach of children.
3. Keep the device away from water , damp or hot environment.
4. Install the device away from strong signal sources such as microwave oven that may cause signal interruption resulted to abnormal operation of the device.
5. Obstruction by concrete wall or metallic materials may reduce the effective operation range of the device and should be avoided.
6. Do NOT attempt to disassemble, repair or modify the device.

2CH Matter Switch Module

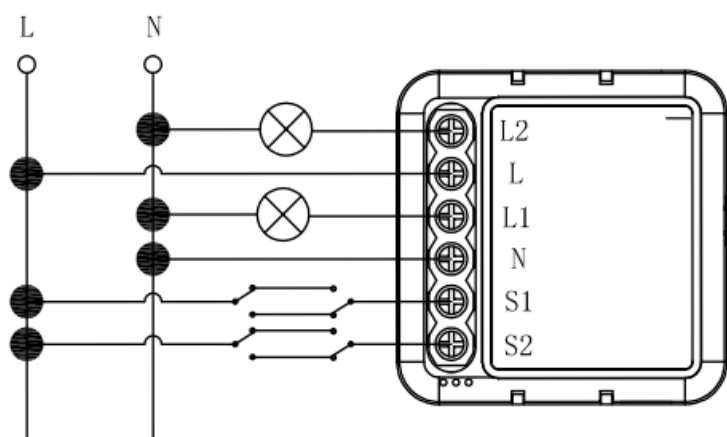
Without Switch



Single Control

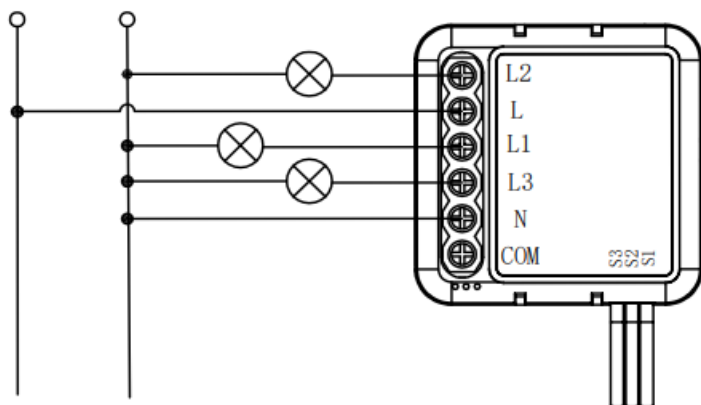


Double Switch

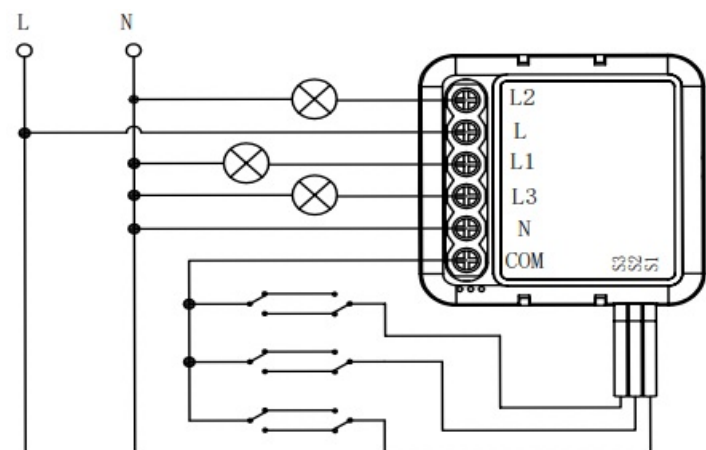
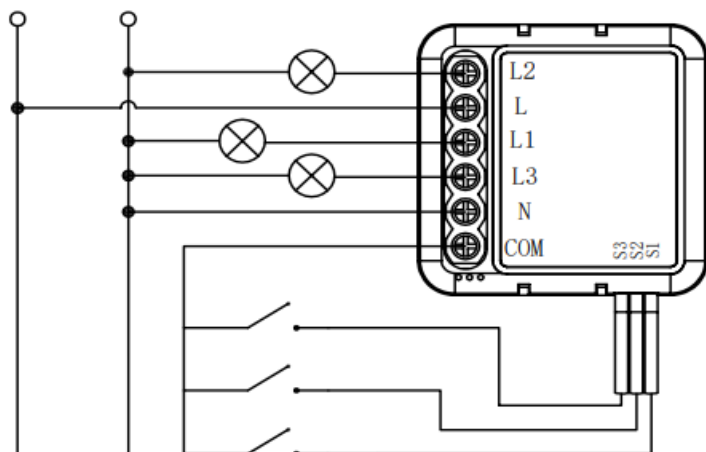


3CH Matter Switch Module

Without Switch

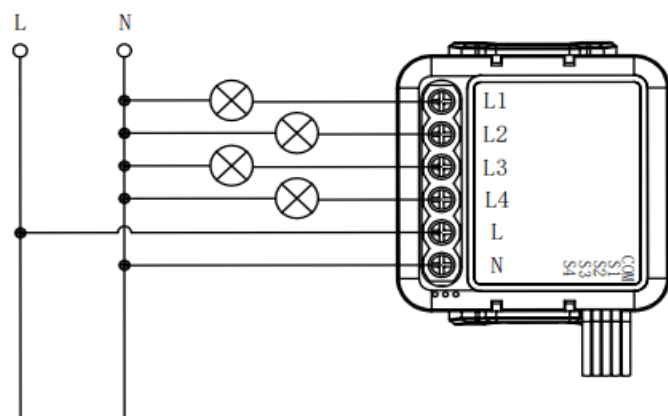


Single Control

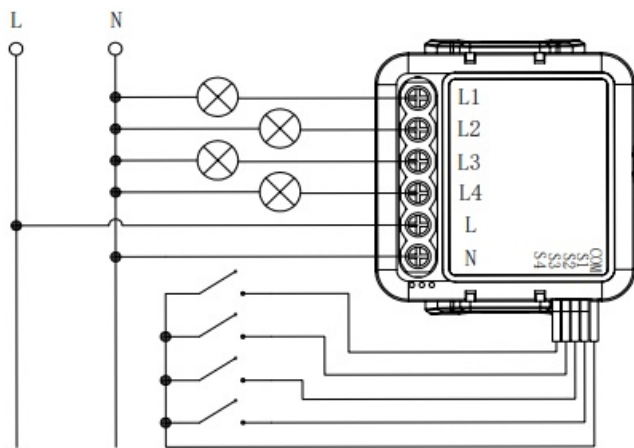


4CH Matter Switch Module

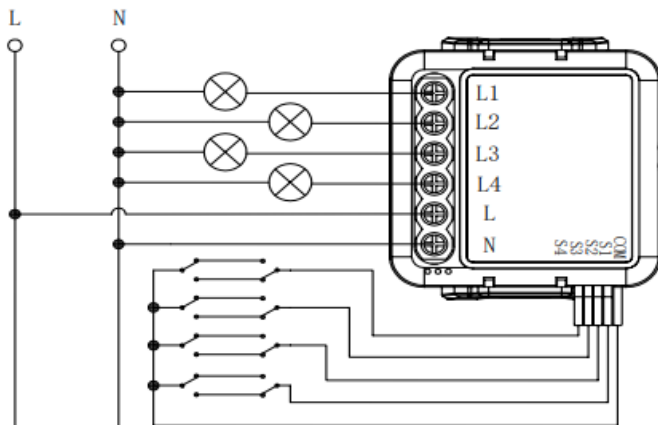
Without Switch



Single Control



Double Switch



Home APP Instruction (1)

Pay attention:

- (1) The mobile phone IOS system version must be 16.0 or later.
- (2) A home hub (such as HomePod, HomePod mini, Apple TV, or iPad) must be set up to add the Matter accessory to the home App;
- (3) The Wi-Fi configured when pairing must be in the LAN with the hub.

Download App

- (1) Open the APP Store, search the "Homekit" and download the APP.
- (2) After the download, open the APP and log in using the local iCloud account.

Add device

By default, the device is in standby mode (the pairing indicator flashes); without the network status, please press the reset key for 5 seconds, and then add the device.

The Device only supports 2.4GHz Wi-Fi signal, need to use the home hub to add.

Scan the device QR code to add (2)



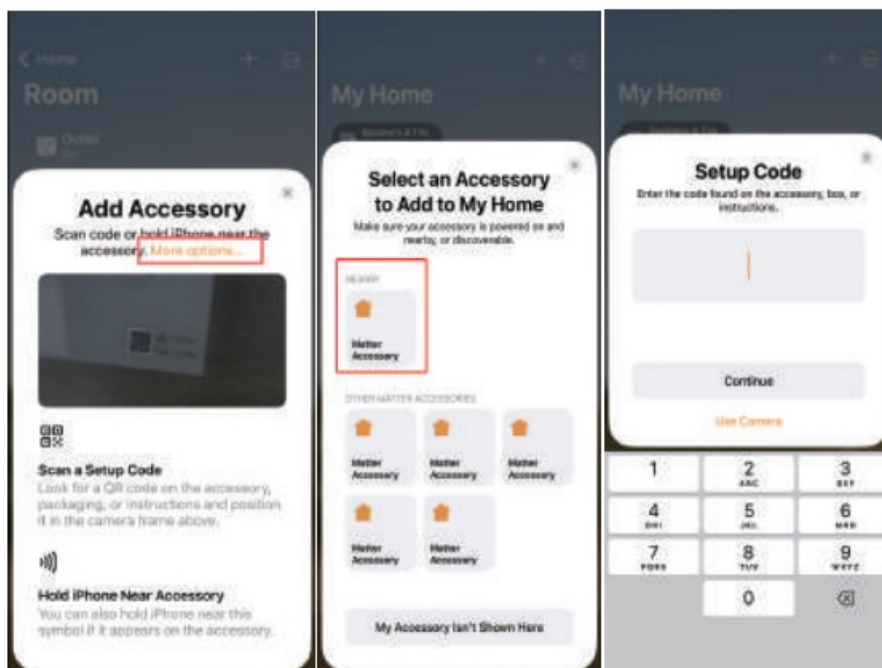
Add Accessory

Scan code or hold iPhone near the accessory. [More options...](#)



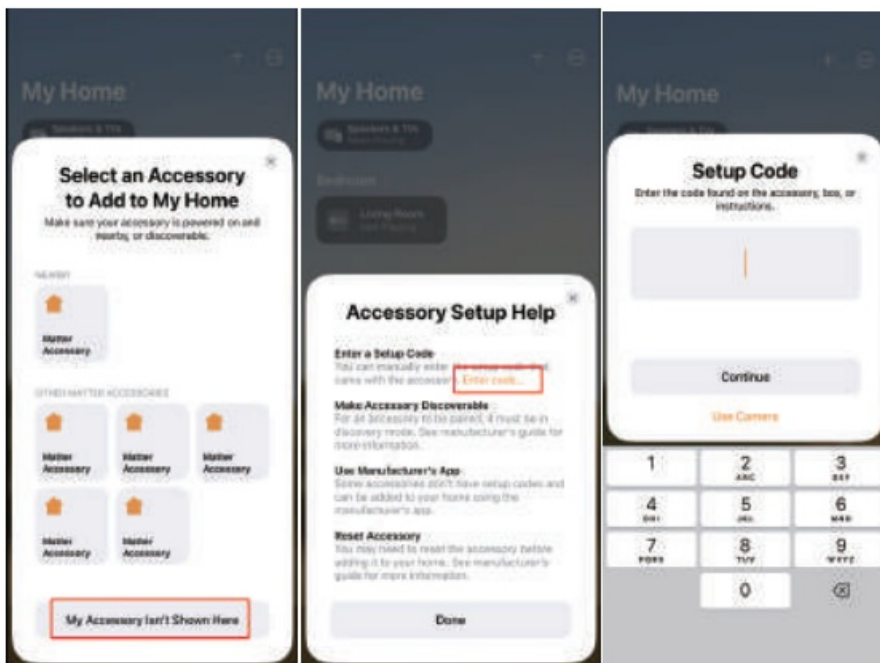
Add via Serial number (3)

a, The APP automatically searches for the nearby devices, clicks the device icon, and input the serial number to add

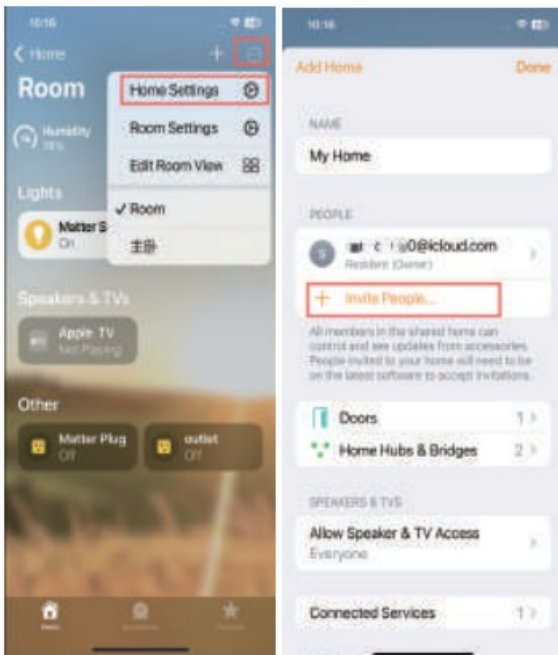


(4)

b. If no device is found, clicks "My Accessory Isn't Shown Here"



Share device (5)



FAQ

Q1: What should I do if I can't configure the switch module?

- Please check whether device is powered on.
- Make sure your mobile and switch module are under the same 2.4 Ghz WIFI network.
- Whether it's in good internet conditions.
- Make sure the password entered in App is correct.
- Make sure the wiring is correct.

Q2: What device can be connected to this Wi-Fi switch module?

Most of your household electrical appliances can be, such as lamps, laundry machine, coffe maker, etc.

Q3: What happens if the WIFI goes off?

You can still control the device connected the switch module with your traditional switch and once WIFI is active again the device connected to module will connect automatically to your WIFI network.

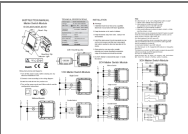
Q4: What should I do if I change the WIFI network or change the password?

You have to re-connect our Wi-Fi switch module to the new Wi-Fi network accordingly as per the App User Manual.

Q5: How do I reset the device?

press the reset key for about 10 seconds until the indicator light inside the module is flashing quickly for pairing.

Documents / Resources

	MATTER MADE 1CH Switch Module [pdf] Instruction Manual 1CH Switch Module, 1CH, Switch Module, Module
-----------------------------------------------------------------------------------	-------------------------------------------------------------------------------------------------------------------------

References

- [User Manual](#)

[Manuals+](#), [Privacy Policy](#)

This website is an independent publication and is neither affiliated with nor endorsed by any of the trademark owners. The "Bluetooth®" word mark and logos are registered trademarks owned by Bluetooth SIG, Inc. The "Wi-Fi®" word mark and logos are registered trademarks owned by the Wi-Fi Alliance. Any use of these marks on this website does not imply any affiliation with or endorsement.