



MATT3R K3Y025A Connected AI-Powered USB Flash Drive User Manual

[Home](#) » [MATT3R](#) » MATT3R K3Y025A Connected AI-Powered USB Flash Drive User Manual 

MATT3R K3Y025A Connected AI-Powered USB Flash Drive User Manual



Contents

- [1 Introduction \(K3Y Device\)](#)
- [2 Getting Started](#)
- [3 Mobile Application](#)
- [4 Troubleshooting & Support](#)
- [5 Technical Specifications](#)
- [6 Regulatory](#)
- [7 Industry Canada Statement](#)
- [8 Documents / Resources](#)
 - [8.1 References](#)
- [9 Related Posts](#)

Introduction (K3Y Device)

- K3Y is the flash drive reinvented for your Tesla Sentry Mode and Tesla Dashcam
- Plug in your K3Y in the Sentry Mode port of your Tesla
- Wirelessly connect and access recorded videos from your Tesla
- Share valuable data from your car for the future of self-driving cars
- Use the companion app Consol3 to help with the installation of K3Y and monitoring its performance

Works with

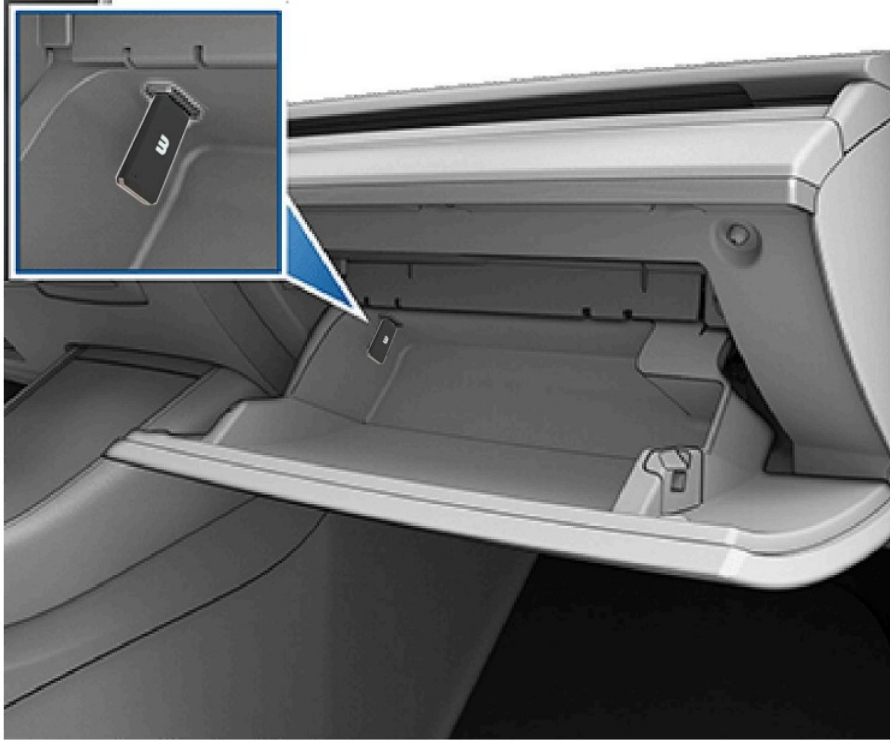
- Tesla Model 3
- Tesla Model Y
- iPhone 12 or later
- USB 2.0 connection interface or higher
- Wi-Fi 802.11 b/g/n 2.4Ghz capable device

Getting Started

Connecting K3Y to Tesla In 2020 and earlier models, plug in the K3Y in the center console USB ports.



In 2021 and later models, plug in the K3Y in the glovebox USB port



Connecting the K3Y to the Right Power Plug/Power Source

To ensure proper functioning of the K3Y device, it is important to connect it to the right power plug/power source. The K3Y device requires a minimum of 5 Volts and 1 Amp of power to function properly. Using a power plug/power source with less than 5 Volts and 1 Amp may result in the K3Y device not functioning properly.

LED Indicator

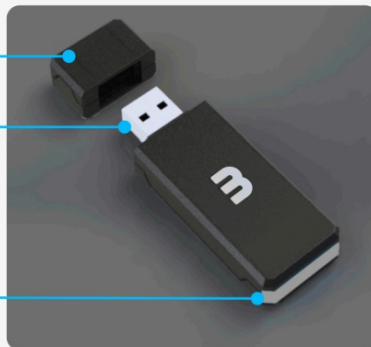
a K3Y LED Button











Use the K3Y LED button for troubleshooting.

Cap

USB Connector

Status LED



b LED Light Behavior		
LED Color	Description	Image
 Solid Blue Light	Indicates that K3Y is booting up.	
 Flashing Blue Light	Indicates that K3Y started successfully. It takes 26 seconds to go from solid to flashing blue.	
 Solid Yellow Light	Indicates that a new K3Y is ready to be set up. It takes 6 seconds to go from flashing blue to solid yellow.	
 Solid White Light	Indicates that K3Y is set up and working after Bluetooth setup.	
 Flashing Magenta	Indicates that something went wrong or an action failed.	

Mobile Application

Overview and download

Install the **Consol3 iOS app** from the email sent to you or go directly to <https://matt3r.ai/app>.

Consol3 enables you to

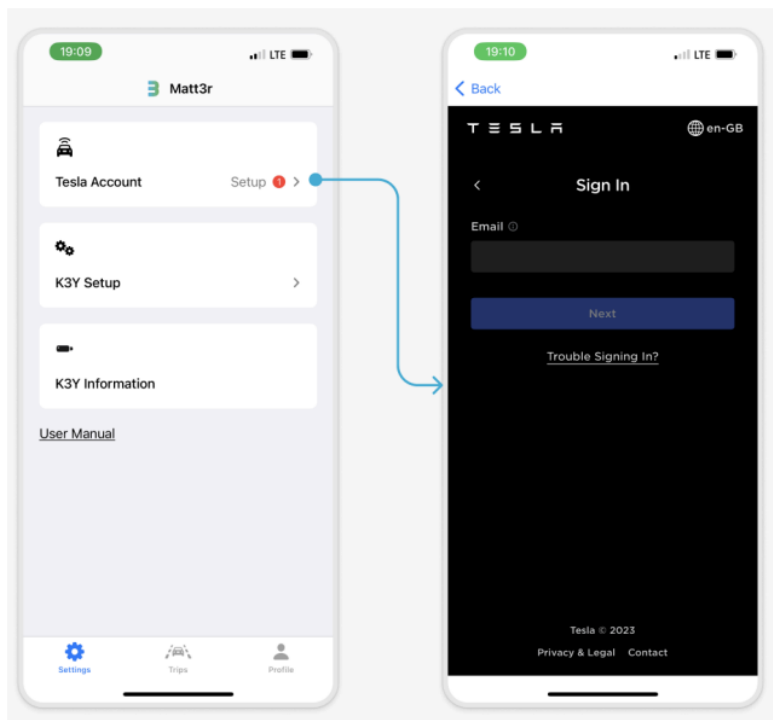
1. Connect your Tesla account for trip information;
2. Connect your K3Y to Wi-Fi for data transmission, and;
3. Get K3Y information and troubleshoot when needed.

Consol3 login

To log in to Consol3, enter your username and password. You can find these credentials in the welcome email sent to you.

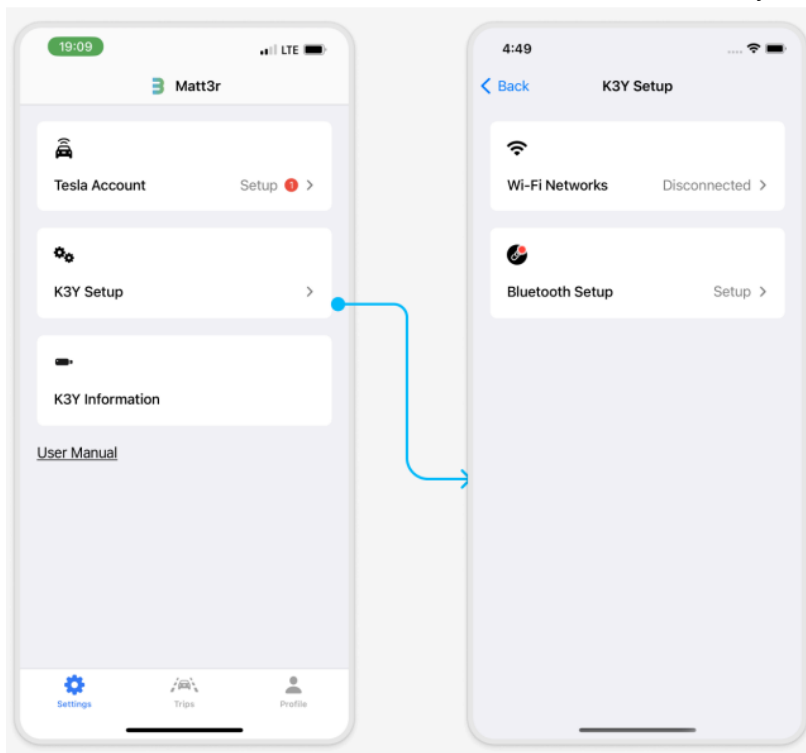
Connect your Tesla account

You can find the **Tesla Account** section in the settings tab in the app's bottom navigation. Follow the instructions to enter your Tesla account credentials securely.

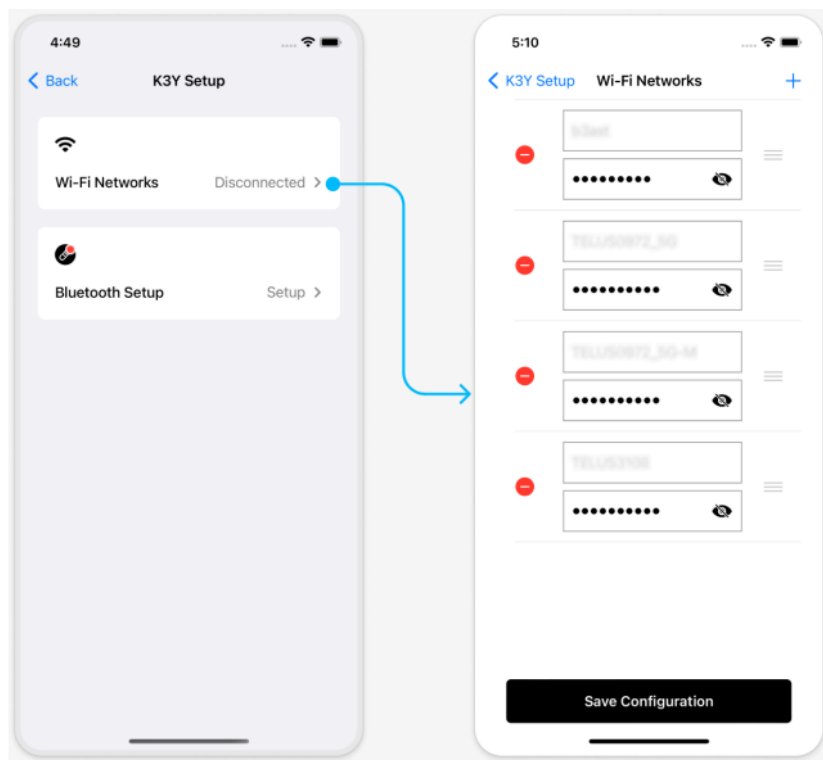


Connect K3Y to Wi-Fi

To ensure K3Y devices can transmit data effectively, it's important to set up a K3Y setting and **Wi-Fi** configuration. This enables the K3Y to communicate with our servers securely to transmit data.



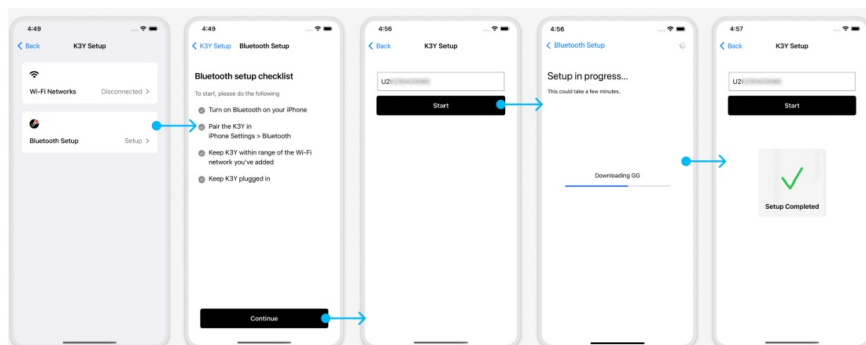
Go to **K3Y setup > Wi-Fi Networks** to add your Wi-Fi credentials to provide connectivity to your K3Y.



Connect K3Y to Consol3

To connect K3Y to Consol3 via Bluetooth, follow these steps:

1. Turn on Bluetooth on your iPhone, if not on already.
2. In the Consol3 app, go to Settings > K3Y Setup > Bluetooth Setup.
3. In your iPhone settings, navigate to Bluetooth and look for K3Y. It shows up as a serial number (U2xxxxxxx) in the list of Bluetooth devices.
4. Once paired, go back to Consol3 and you should see the serial number in the box.
Click on the start button to start the setup process. Once completed, you should see the message "Setup Completed" on screen.
5. To ensure success, keep K3Y plugged in and within range of the Wi-Fi network you added.
6. Press < Back at the top left to go back to the previous screen.
7. Your K3Y and Consol3 are now ready to be used in the background. You can drive your Tesla as usual.



Firmware update

Matt3r continuously improves the user experience with bug fixes and enhancements.

The Consol3 mobile app may notify you that a new firmware is available. The app will also provide any instructions to update firmware. It is always recommended to update to the latest firmware version.

Troubleshooting & Support

Hardware Reset

Factory reset: To go through a factory reset, hold the LED button for 26+ seconds and then release. You can count the seconds with each LED blink while pressing the button.

Wait for at least 20 minutes and keep the device connected with no interruptions until the unit recovers and LED goes back to solid yellow state. This action will reset the device to an “out of the box” original condition and will erase the data that is currently stored on it. If the reset fails, you’ll see a continuous magenta light.

Soft reset: Hold the button for 6 seconds and then release. A soft reset removes K3Y from the current owner network settings and makes it available for a fresh setup and Wifi connectivity. During this process, a blue flashing light will be visible. Upon successful completion, the LED will recover to solid yellow. If the reset fails, you’ll see a continuous magenta light.

Email Support

Send an email to info@matt3r.ai with your issue. Make sure to include a screenshot of the app and explain clearly the circumstances.

Technical Specifications

- **Version:** K3Y 2.7
- **Form Factor:** USB flash drive
- **Memory/Storage:** embedded flash memory, not user removable (128 GB)
- **Battery Type:** Built-in, non-replaceable solid state rechargeable
- **Wireless Connectivity:** Wi-Fi: IEEE 802.11 a/b/g/n/ac (2.4 , 5GHz)
- **Wireless Connectivity:** Bluetooth 5.0
- **Wireless Range:** Up to 45m (150 feet) line-of-sight
- **Wireless Security:** WPA2
- **Status LEDs:** Power/Battery & Wi-Fi activity
- **Operating temperature:** 14°F to 113°F (-10°C – 45°C)
- **Storage temperature:** -4°F to 113°F (-20°C – 70°C)
- **Operating relative humidity:** 5% to 95% non-condensing
- **Maximum operating altitude:** 10,000 feet (3,048m)
- **Maximum File Size:** limited only by capacity
- **Dimensions:** 70mm x 25mm x 9mm
- **Weight:** 19g

Safety and Care

All wireless devices are susceptible to interference, which might affect the performance of a K3Y. Do not switch on a K3Y in restricted areas or areas where wireless devices are prohibited. When instructed to do so, switch off the K3Y in restricted areas such as those near medical equipment, fuel/chemicals, or blasting areas, or when instructed to in aircraft. The K3Y contains a lithium polymer battery that has been fully tested for safety. However, several precautions should be taken when using a K3Y:

When a K3Y is in a pocket with other metallic objects, make sure the cap is in place.

- Never charge a K3Y unattended.

- Never intentionally heat a K3Y in a microwave oven or dryer or place in a fire.
- Never use the K3Y in temperatures above 60°C (140°F).
- Stop using a K3Y if any abnormal heat, odor, deformation, discoloration, or other abnormal condition is detected. If any liquid leaks from a K3Y, wash your hands well with fresh water immediately. If liquid gets into your eyes, wash with edible oil and see a doctor immediately.

The K3Y is not water resistant.

Do not store a K3Y in extreme temperatures. High temperatures can shorten the life of the device by damaging the battery or cause warping or melting of the plastic enclosure. Cold temperatures can also shorten the life of the K3Y by damaging the battery, causing plastic enclosure to crack, or causing moisture to condense on or inside the device. Keep the K3Y dry. Water or other liquids can damage it. In addition, high humidity can cause condensation to form. If a K3Y gets wet, turn it off, place it in a low-humidity environment, and allow it to completely dry.

Do not store a K3Y in a dusty or dirty area because mechanicals parts may be damaged or cease to work

Do not attempt to open or modify a K3Y. It contains no internal serviceable parts.

Attempting to modify a K3Y can damage the device and cause it to operate in violation of government regulations and can cause a safety concern. Do not drop, shake, strike, crush, or blend a K3Y as this may damage the device. If a K3Y becomes damaged, halt use immediately.

Cleaning

Before cleaning a K3Y, disconnect it from any USB port and turn off the device. If the outside of the K3Y is soiled, use a cloth that has been slightly dampened with water to clean the outside. Do not allow water to enter the K3Y around the power button or USB connector.

Maintenance and Storage

The K3Y contains a lithium polymer battery that needs proper care for best usage. Note that while the lithium polymer battery does not have any memory effect, a proper case is required for the best usage.

Please recycle all the K3Y packaging. When the K3Y has reached the end of its useful life, return it to a recycling station in your community to prevent uncontrolled waste disposal and dispose of the battery properly.

Regulatory

Product Name: Connected AI-Powered USB Flash Drive

Model: K3Y

FCC ID: 2BDJO-K3Y025A

IC: 31604-K3Y025A



Federal Communication Commission Interference Statement

This device complies with Part 15 of the FCC Rules. Operation is subject to the following two conditions:

(1) This device may not cause harmful interference, and **(2)** this device must accept any interference received, including interference that may cause undesired operation.

This equipment has been tested and found to comply with the limits for a Class B digital device, pursuant to Part 15 of the FCC Rules. These limits are designed to provide reasonable protection against harmful interference in a residential installation. This equipment generates, uses and can radiate radio frequency energy and, if not installed and used in accordance with the instructions, may cause harmful interference to radio communications. However, there is no guarantee that interference will not occur in a particular installation. If this equipment does cause harmful interference to radio or television reception, which can be determined by turning the equipment off and on, the user is encouraged to try to correct the interference by one of the following measures:

- Reorient or relocate the receiving antenna.
- Increase the separation between the equipment and receiver.
- Connect the equipment into an outlet on a circuit different from that to which the receiver is connected.
- Consult the dealer or an experienced radio/TV technician for help.

FCC Caution: Any changes or modifications not expressly approved by the party responsible for compliance could void the user's authority to operate this equipment. This transmitter must not be co-located or operating in conjunction with any other antenna or transmitter.

This device meets all the other requirements specified in Part 15E, Section 15.407 of the FCC Rules.

Radiation Exposure Statement

The product complies with the FCC portable RF exposure limit set forth for an uncontrolled environment and is safe for intended operation as described in this manual.

To comply with RF exposure requirements, a minimum separation distance of 5 mm must be maintained between the user's body including the antenna.

Industry Canada Statement

This device complies with ISED's license-exempt RSSs.

Operation is subject to the following two conditions: (1) This device may not cause harmful interference, and (2) this device must accept any interference received, including interference that may cause undesired operation.

Caution :

(iv) where applicable, antenna type(s), antenna models(s), and worst-case tilt angle(s) necessary to remain compliant with the e.i.r.p. elevation mask requirement set forth in section 6.2.2.3 shall be clearly indicated.

Radiation Exposure Statement

The product complies with the ISED portable RF exposure limit set forth for an uncontrolled environment and is safe for intended operation as described in this manual.

To comply with RF exposure requirements, a minimum separation distance of 5 mm must be maintained between the user's body including the antenna.

E-Label Information

The FCC/ISED regulatory information can be found in the companion mobile application Consol3 as described in Section "Mobile Application".

Step 1 – Open the app and enter the username and password to login.

Step 2 – Navigate to the "Settings" page and tap on the "User Manual"

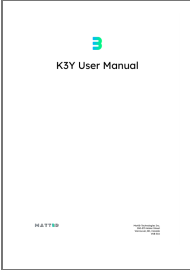
Step 3 – Navigate to the "Regulatory" section, where applicable regulatory information is displayed.

Matt3r Technologies Inc.

550-375 Water Street
Vancouver, BC, Canada
V6B 5C6



Documents / Resources

	<p>MATT3R K3Y025A Connected AI-Powered USB Flash Drive [pdf] User Manual K3Y025A Connected AI-Powered USB Flash Drive, K3Y025A, Connected AI-Powered USB Flash Drive, AI-Powered USB Flash Drive, USB Flash Drive, Flash Drive, Drive</p>
---	---

References

- [User Manual](#)

[Manuals+](#), [Privacy Policy](#)

This website is an independent publication and is neither affiliated with nor endorsed by any of the trademark owners. The "Bluetooth®" word mark and logos are registered trademarks owned by Bluetooth SIG, Inc. The "Wi-Fi®" word mark and logos are registered trademarks owned by the Wi-Fi Alliance. Any use of these marks on this website does not imply any affiliation with or endorsement.