



matt E ARD-3-32-TP-R Three Phase Connection Unit



matt E ARD-3-32-TP-R Three Phase Connection Unit Owner's Manual

[Home](#) » [matt e](#) » **matt E ARD-3-32-TP-R Three Phase Connection Unit Owner's Manual** 

Contents

- [1 matt E ARD-3-32-TP-R Three Phase Connection Unit](#)
- [2 Product Usage Instructions](#)
- [3 Product Features and benefits](#)
- [4 Documents / Resources](#)
 - [4.1 References](#)
- [5 Related Posts](#)



matt E ARD-3-32-TP-R Three Phase Connection Unit



Product Usage Instructions

1. **Installation:** Ensure proper electrical connections are made following relevant regulations.
2. **Power Reset:** The auto reset device will restore power automatically once the fault is cleared.
3. **Maintenance:** Regularly check for faults and ensure the unit is clean and dry.
4. **Support:** Contact manufacturer for any technical assistance or issues.

Frequently Asked Questions (FAQ)

- **Q: How do I reset the auto reset device?**

A: The device will reset automatically once the fault is cleared. No manual reset is needed.

- **Q: What is the warranty period for this product?**

A: The product comes with a 1-year warranty from the date of purchase.

- **Q: Can this unit be used for residential EV charging?**

A: Yes, this unit is designed to simplify EV connection and can be used for residential EV charging purposes.

ARD-3-32-TP-R

Three-phase connection unit with 3 x 32A Type A RCBOs

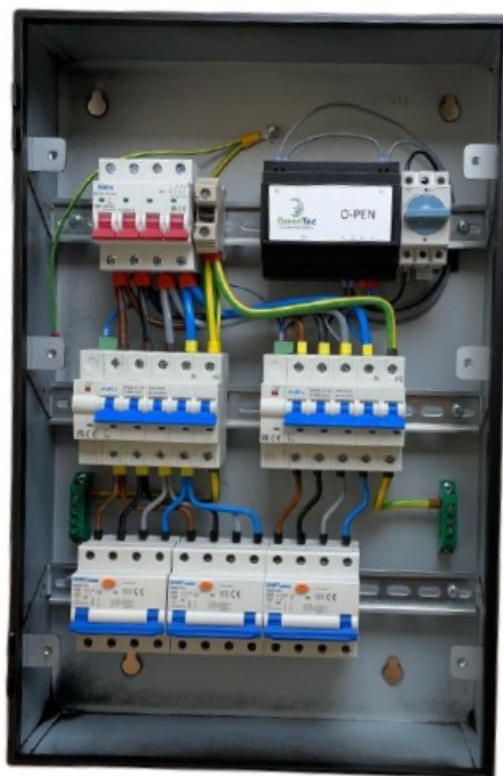
The matt:e ARD connection centres provide a simple to install dedicated EV connection centre, with built in O-PEN® technology, that allows for the connection of EV charge points to the PME earthing facility without the use of earth electrodes.

Helping to facilitate compliance with BS:7671. 2018 Amendment 1, 2020 Regulation 722.411.4.1.(iii).

The matt:e ARD connection centres incorporate the unique 5 pole auto reset device that automatically restores power to the load once the fault has cleared.

Product Features and benefits


- Built in O-PEN® technology
- NO EARTH ELECTRODES REQUIRED
- Helps reduce disruptive and costly groundworks
- Removes the risk of striking buried services
- Simple wire in wire out connection
- Phase loss protection
- 3 x 32A TPN Type A RCBOs
- Mild steel IP4X enclosure
- Standard 1 Year parts warranty.



Input Volts	400V 50Hz
Max Load	96A per phase
Cable Entry Facility	Top and bottom
Terminal Capacity	25mm ²
Dimensions (H x W x D)	550mm x 360mm x 120mm
Weight	Approximately 7kG
Enclosure	Mild Steel Powder Coated
Ingress Protection	IP4X
Warranty	1 Year

...Simplifying EV connection

Documents / Resources



[matt E ARD-3-32-TP-R Three Phase Connection Unit \[pdf\] Owner's Manual](#)
ARD-3-32-TP-R Three Phase Connection Unit, ARD-3-32-TP-R, Three Phase Connection Unit, Connection Unit, Unit

References

- matt-e.co.uk
- [User Manual](#)

[Manuals+](#), [Privacy Policy](#)

This website is an independent publication and is neither affiliated with nor endorsed by any of the trademark owners. The "Bluetooth®" word mark and logos are registered trademarks owned by Bluetooth SIG, Inc. The "Wi-Fi®" word mark and logos are registered trademarks owned by the Wi-Fi Alliance. Any use of these marks on this website does not imply any affiliation with or endorsement.