



MATT BLATT MBLIBTKYHLA Conical Hanging Lamp User Guide

[Home](#) » [MATT BLATT](#) » MATT BLATT MBLIBTKYHLA Conical Hanging Lamp User Guide 



**KYOTO CONICAL HANGING
LAMP User Guide**

Contents

- 1 SAFETY & WARNINGS
- 2 SPECIFICATIONS
- 3 INSTALLATION
- 4 Documents / Resources
- 5 Related Posts

SAFETY & WARNINGS

Ensure power is completely switched off before installing. Assemble as per the instructions below, and only connect to power when complete.

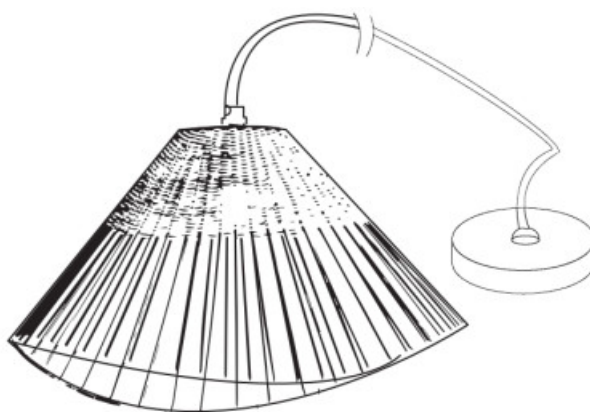
Notes:

1. Read this user guide carefully before installing the lamp.
2. To protect the lamp and prevent damage or scratches, ensure a soft blanket is laid down. We recommend wearing gloves when assembling the lamp.
3. If the power cord is damaged, cease use immediately. Contact help.kogan.com for support.

SPECIFICATIONS

Power Supply	220V-240V ~50Hz
Base	E27 (Edison screw, 27mm)
Wattage	Max. 40W

COMPONENTS



A Lamp (x1)



B Bracket (x1)

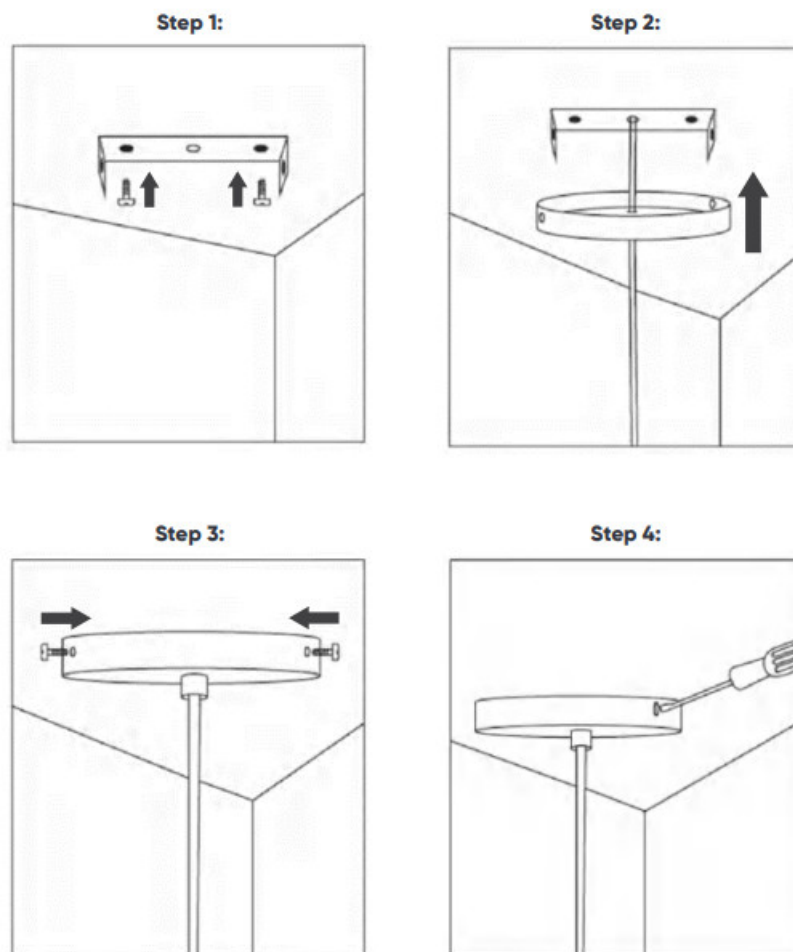


C Screw (x4)

INSTALLATION

Note:

This lamp must be installed by a qualified electrician. Do not attempt to install this lamp yourself.




NEED MORE INFORMATION?

We hope that this user guide has given you the assistance needed for a simple set-up. For the most up-to-date guide for your product, as well as any additional assistance you may require, head online to



help.mattblatt.com.au

Documents / Resources

 <p>KYOTO CONICAL HANGING LAMP User Guide</p> <p>MATT BLATT</p>	<p>MATT BLATT MBLIBTKYHLA Conical Hanging Lamp [pdf] User Guide MBLIBTKYHLA, Conical Hanging Lamp, MBLIBTKYHLA Conical Hanging Lamp, Hanging Lamp, Lamp</p>
--	---