



MATT BLATT MBLIBTDATAA Dalen Table Lamp User Guide

[Home](#) » [MATT BLATT](#) » MATT BLATT MBLIBTDATAA Dalen Table Lamp User Guide 

Contents

- [1 MATT BLATT MBLIBTDATAA Dalen Table Lamp](#)
- [2 SAFETY & WARNINGS](#)
- [3 SPECIFICATIONS](#)
- [4 COMPONENTS](#)
- [5 ASSEMBLY](#)
- [6 NEED MORE INFORMATION?](#)
- [7 Documents / Resources](#)
- [8 Related Posts](#)

MATT BLATT

MATT BLATT MBLIBTDATAA Dalen Table Lamp



SAFETY & WARNINGS

Ensure power is completely switched off before installing. Assemble as per the instructions below, and only connect to power when complete.

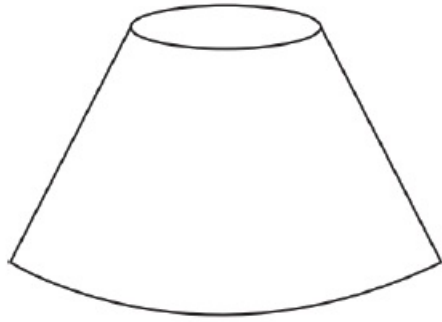
Notes:

1. Read this user guide carefully before installing the lamp.
2. To protect the lamp and prevent damage or scratches, ensure a soft blanket is laid down. We recommend wearing gloves when assembling the lamp.
3. If the power cord is damaged, cease use immediately. Contact help.kogan.com for support.

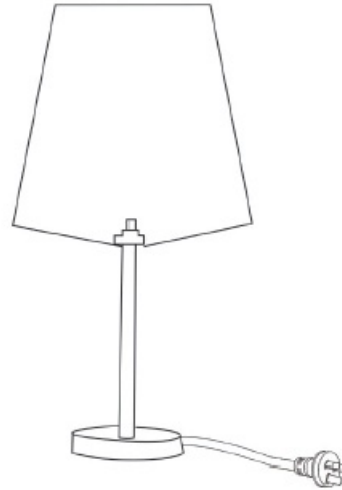
SPECIFICATIONS

- Power Supply 220V-240V ~50Hz
- Base E27 (Edison screw, 27mm)
- Wattage Max. 40W

COMPONENTS



A Lamp shade

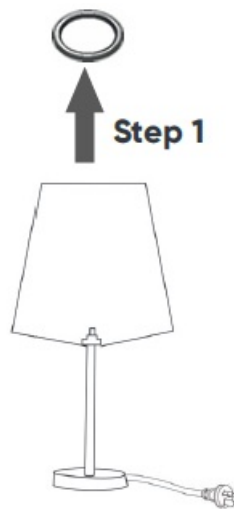


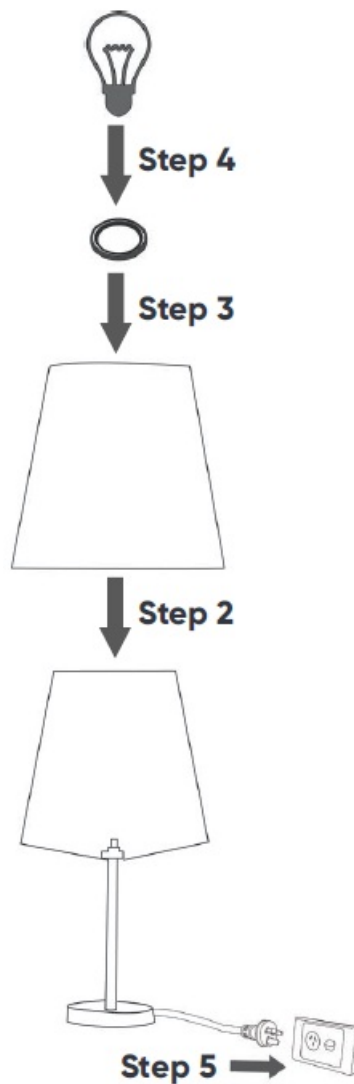
B Base

ASSEMBLY

Note:

The bulb is not included.






NEED MORE INFORMATION?

We hope that this user guide has given you the assistance needed for a simple set-up. For the most up-to-date guide for your product, as well as any additional assistance you may require, head online to help.mattblatt.com.au.

Documents / Resources

	<p>MATT BLATT MBLIBTDATAA Dalen Table Lamp [pdf] User Guide MBLIBTDATAA, Dalen Table Lamp, MBLIBTDATAA Dalen Table Lamp</p>
---	--