



matrox N3408 3 IP KVM Extender Instruction Manual

[Home](#) » [Matrox](#) » matrox N3408 3 IP KVM Extender Instruction Manual 

Contents

- 1 matrox N3408 3 IP KVM Extender
- 2 SYSTEM REDUNDANCY VIA SWITCHING
- 3 DISTRIBUTED MODEL
- 4 RESILIENT IP TRANSPORT
- 5 HARNESS THE POWER OF VIDEO
- 6 Documents / Resources
 - 6.1 References



matrox N3408 3 IP KVM Extender



Product Information

Specifications:

- Product Name: Matrox Extio 3 IP KVM extender
- Features: System Redundancy, Redundant Network Interface, EDID
- Management, Distributed Model, Resilient IP Transport
- Network Compatibility: 1 GbE
- Operating Environments: 24/7 critical environments

Product Usage Instructions

System Redundancy via Switching:

The Extio 3 IP KVM extender offers system redundancy through switching capabilities. Follow these steps to set up system redundancy:

- Connect the primary Extio 3 transmitter to the LAN.
- Set up a back-up system with another Extio 3 transmitter.
- Connect the Extio 3 receiver to the LAN.
- Utilize the Extio Central Manager to manage and configure the system for redundancy.

Redundant Network Interface:

To configure redundant network interfaces for the Extio 3 transmitter and receiver, follow these steps:

Connect the Extio 3 transmitter and receiver to the LAN.

Access the Extio Central Manager to configure redundant network interfaces.

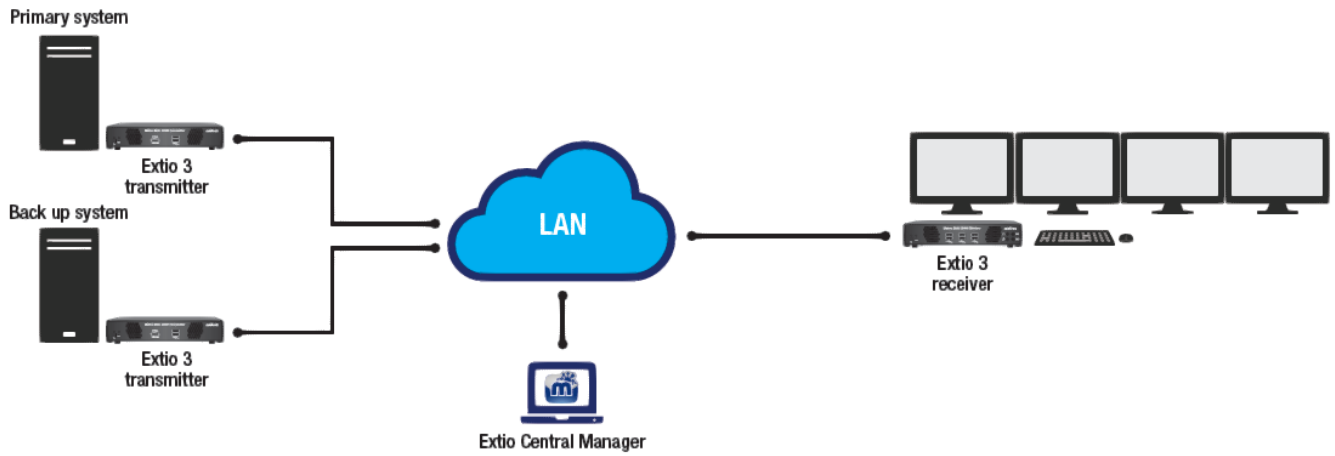
IP KVM SOLUTIONS FOR 24/7 ENVIRONMENTS

Matrox Extio 3 IP KVM extender offer five leading features for high availability

IP KVM SOLUTIONS FOR 24/7 ENVIRONMENTS

Organizations running critical systems for control or monitoring need a high availability strategy for continuous operation. This strategy puts in place redundancies and failover mechanisms to help them recover quickly in the event of a system failure. Matrox® Extio 3 IP KVM extenders offer several essential features that help organizations to build redundancy and fault tolerance into their installations, and remove single point of failures that disrupt operations.

SYSTEM REDUNDANCY VIA SWITCHING



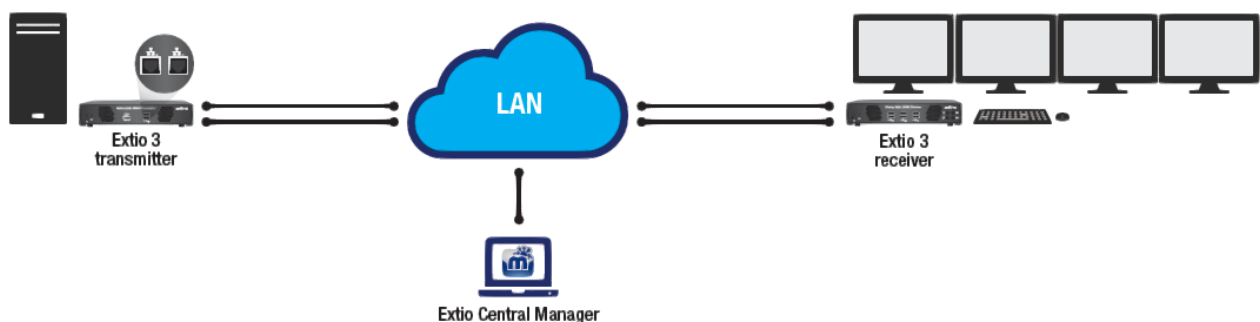
Extio 3 IP KVM extender's switching capabilities deliver system redundancy



Matrox Extio 3 IP KVM extenders transmit and extend all audio, video, and USB signals efficiently over 1 Gigabit Ethernet (GbE) networks, and the inherent switching capability of this product is useful to build system redundancy. With support for many-to-one configurations, each remote user will have access to a main system, and the option to quickly switch to the back-up unit when the main system fails. In case of system failure, either the user could switch directly through the Extio 3 receiver units' on-screen display, or an IT staff could route the back-up system to the receiver unit through the Matrox Extio Central Manager (ECM) software, in real-time.

Primary system

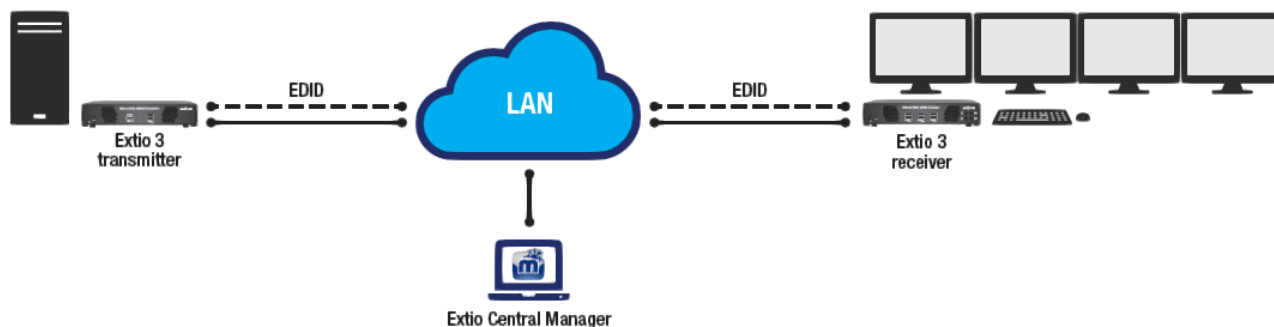
REDUNDANT NETWORK INTERFACE



Extio 3 transmitter and receiver appliances can be configured to support redundant network interfaces

Matrox Extio 3 appliances feature two network interface ports for redundancy—the built-in RJ45 interface acts as the primary port, and the second port serves as the back-up interface. When Extio 3 detects a communication failure on the primary port—for example, due to a cable disconnection, or faulty network switch—its failover feature will automatically switch to the back-up interface, enabling operations to quickly resume. When Extio 3 transmitter cards are used in a PC system, fiber optic or CAT5e cable disconnects remain transparent to the server, and once the link is re-established, the system will be accessible again without requiring a server reboot.

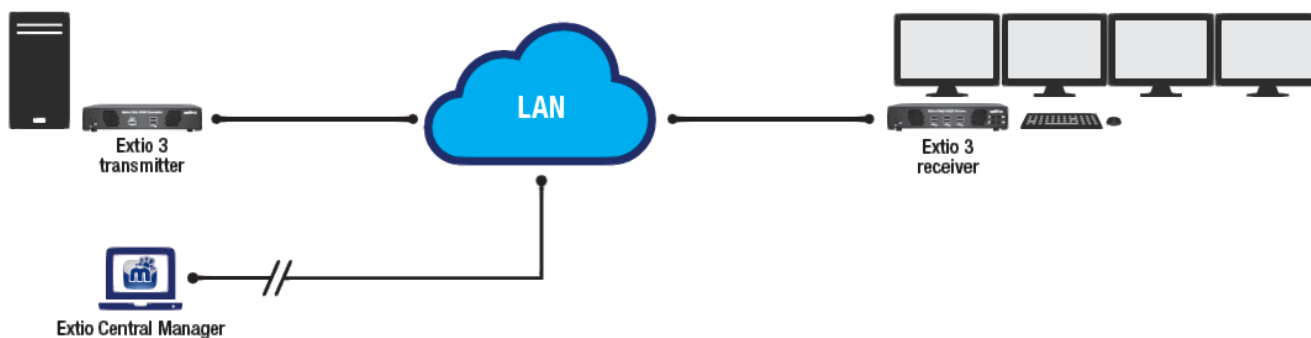
EDID MANAGEMENT FOR RELIABLE OPERATION



Extio 3's EDID management feature saves monitor's EDID information in the transmitter unit and facilitates seamless operation

Accidental cable disconnects are always a concern in AV installations, especially in multi-display environments, where the user works with two or more displays. For example, a monitor cable disconnecting might generate a series of operating system events that could alter the multi-display configuration of the system. A robust solution, Extio 3 units feature lockable video and power connectors, as well as advanced extended display identification data (EDID) management. With EDID caching, Extio 3 saves the monitor's EDID information including available resolutions, refresh rates, and display timings in the transmitter unit—this hides the impact of accidental cable disconnects from the system, and the monitor's operation seamlessly resumes when the cables are reconnected.

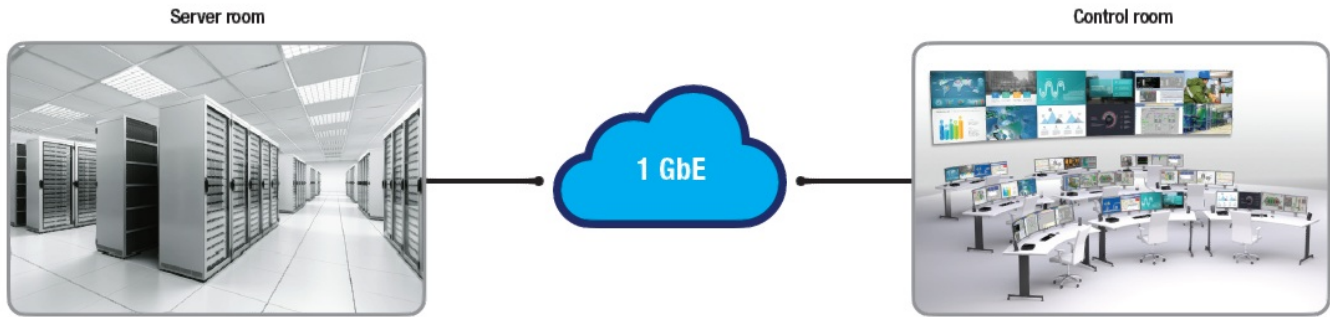
DISTRIBUTED MODEL



Extio 3 IP KVM's distributed model of operation eliminates single point of failure

Extio Central Manager software is used for configuring, managing, and monitoring units from a central location over IP. It supports a distributed model—once all the units are configured, the settings and parameters reside locally in each transmitter and receiver unit. Even when the central system running ECM gets accidentally or intentionally disconnected from the KVM network, or an Extio 3 unit is taken offline, the rest of the KVM system continues to operate. Unlike other IP KVM products, the Extio 3 management software will not become the cause for a single point of failure in the entire ecosystem. ECM also provides the ability to export and import device settings, and simplifies the addition and configuration of a new unit to the KVM network.

RESILIENT IP TRANSPORT



Extio 3 reliably transports multiple high-resolution videos over a 1 GbE network at very low bitrates

A well-designed network infrastructure should have virtually no packet loss. Extio 3 extender's unique design further mitigates this risk by transporting multiple high-resolution videos over a 1 GbE network at very low bitrates. Incredibly, Extio 3 utilizes merely 5% of the network bandwidth required by the next most bitrate-efficient IP KVM extender. This low bandwidth consumption greatly simplifies the deployment and management of the overall KVM network. Designed to be resilient in varying network conditions, Extio 3 continuously monitors the transmitted information, and supports under the hood, several error detection and correction mechanisms, that help it gracefully recover from packet loss or transmission errors. Using unique patented technologies, Extio 3 intelligently adjusts its internal processing parameters, and helps to deliver a resilient KVM system that minimizes downtime and favors continuous operation.

CONCLUSION



In applications where the system goals are high availability, the Extio 3 IP KVM extenders excel. Their resilient operation, and built-in hardware- and software-based redundancy-enabling features make them an excellent choice for critical environments where 24/7 operations are expected.

QUESTIONS ABOUT IP KVM SOLUTIONS?

Get in touch with a Matrox Video representative to learn more about Matrox® Extio 3 IP KVM extenders.



HARNESS THE POWER OF VIDEO

About Matrox Video

Matrox Video is a leading manufacturer of video products and components for the broadcast and media, live entertainment, and AV/IT markets. Our mission is to create innovative products and provide superior support, enabling our customers to harness the power of video to entertain, communicate and make critical decisions. From launching the first specialized video display device on the market in 1976, to delivering Broadcast & Media products to OEM providers around the world, Matrox Video is a recognized leader in delivering world-class video solutions. Our long history with broadcasters gives us unique knowledge of this industry and the technical requirements needed to help you succeed. This experience enables us to design products tailored to the needs of the Broadcast & Media market.

For more than 45 years, we have worked closely with our global partners to develop products that address business challenges and meet evolving needs. Still today, our continued commitment to the success of our customers and partners is what drives us to deliver innovation that solves real-world industry problems.

CONTACT MATROX VIDEO

Montreal Headquarters: 1-[800-361-4903](tel:800-361-4903) (North America), [514-822-6364](tel:514-822-6364) (Worldwide) | video@matrox.com

London Office: +44 (1895) 827300

Munich Office: +49 89 62170-444

ABOUT MATROX VIDEO

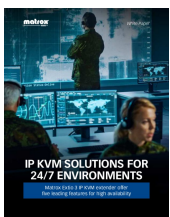
Matrox Video is a global manufacturer of reliable, high-quality ASICs, boards, appliances, and software. Backed by in-house design expertise and dedicated customer support, Matrox products deliver stellar capture, extension, distribution, and display. Engineering high-quality products since 1976, Matrox technology is trusted by professionals and partners worldwide. Matrox is a privately held company headquartered in Montreal, Canada.

For more information, visit video.matrox.com

Matrox and Matrox Video product names are registered trademarks and/or trademarks of Matrox Graphics Inc. in Canada and/or other countries. All other

company and product names are registered trademarks and/or trademarks of their respective owners. 11/2023

Documents / Resources



[matrox N3408 3 IP KVM Extender](#) [pdf] Instruction Manual

N3408 3 IP KVM Extender, N3408, 3 IP KVM Extender, KVM Extender, Extender

References

- [!\[\]\(694fcb4611893e9db5249daba48abfc1_img.jpg\) **Matrox Video | Video Products for Broadcast and Pro AV/IT**](#)
- [**User Manual**](#)

[Manuals+](#), [Privacy Policy](#)

This website is an independent publication and is neither affiliated with nor endorsed by any of the trademark owners. The "Bluetooth®" word mark and logos are registered trademarks owned by Bluetooth SIG, Inc. The "Wi-Fi®" word mark and logos are registered trademarks owned by the Wi-Fi Alliance. Any use of these marks on this website does not imply any affiliation with or endorsement.