



MATRIX TF50XR Treadmill User Manual

[Home](#) » [MATRIX](#) » MATRIX TF50XR Treadmill User Manual 

MATRIX

TF30, TF50
T50, T70

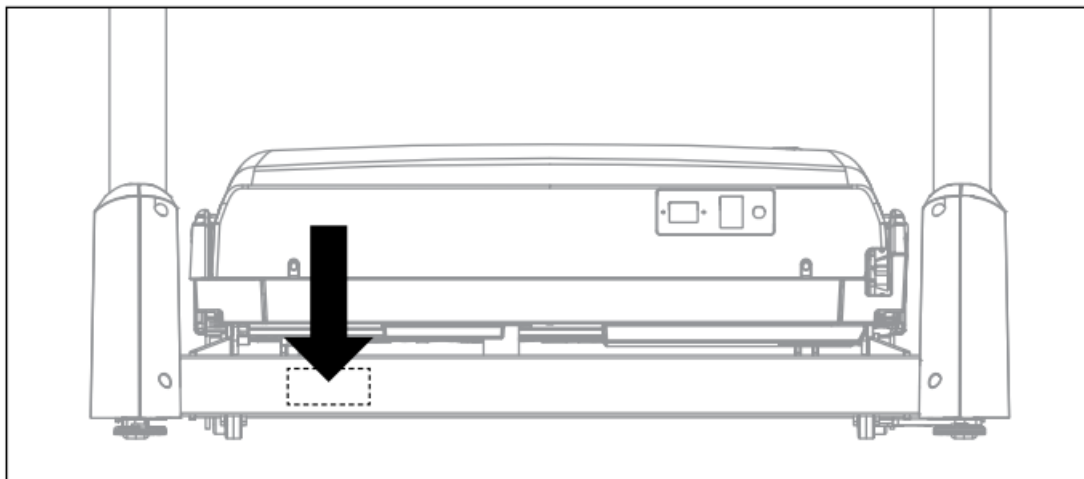


Contents

- 1 ASSEMBLY**
- 2 Documents / Resources

ASSEMBLY

SERIAL NUMBER LOCATION



Before proceeding, find your equipment's serial number located on a barcode sticker and enter it in the space provided below.

SERIAL NUMBER

MODEL NAME

<input type="checkbox"/> TF30	<input type="checkbox"/> T50	MATRIX TREADMILL
<input type="checkbox"/> TF50	<input type="checkbox"/> T70	

WARNING!

There are several areas during the assembly process that special attention must be paid. It is very important to follow the assembly instructions correctly and to make sure all parts are firmly tightened. If the assembly instructions are not followed correctly, the equipment could have parts that are not tightened and will seem loose and may cause irritating noises. To prevent damage to the equipment, the assembly instructions must be reviewed and corrective actions should be taken.

UNPACKING

Place the treadmill carton on a level flat surface. It is recommended that you place a protective covering on your floor. Take CAUTION when handling and transporting this unit. Never open box when it is on its side.

Once the banding straps have been removed, do not lift or transport this unit unless it is fully assembled and in the upright folded position, with the lock latch secure. Unpack and assemble the unit where it will be used. The enclosed treadmill is equipped with high-pressure shocks and may spring open if mishandled.

Never grab hold of any portion of the incline frame and attempt to lift or move the treadmill.

WARNING!

DO NOT ATTEMPT TO LIFT THE TREADMILL! Do not move or lift treadmill from packaging until fully assembled. FAILURE TO FOLLOW THESE INSTRUCTIONS COULD RESULT IN INJURY!

IMPORTANT NOTES

During each assembly step, ensure that ALL nuts and bolts are in place and partially threaded.

Several parts have been pre-lubricated to aid in assembly and usage. Please do not wipe this off. If you have difficulty, a light application of lithium grease is recommended.

TOOLS INCLUDED:

- 5 mm L Wrench
- 6 mm L Wrench
- 8 mm T Wrench
- Phillips Screwdriver

NEED HELP?

If you have questions or if there are any missing parts, contact Customer Tech Support. Contact information is located on the information card.

TF30/TF50



PARTS INCLUDED:

1 Treadmill Frame	2 Base Frame Cover Sets
2 Console Masts	1 Console Back Cover
2 Console Mast Boots	1 Power Cord
1 Console Base	1 Safety Key
1 Handlebar	1 Hardware Kit
2 Handlebar Sleeves	1 Bottle of Silicone Lubricant (for 2 applications)
4 Handlebar Caps	Console sold separately

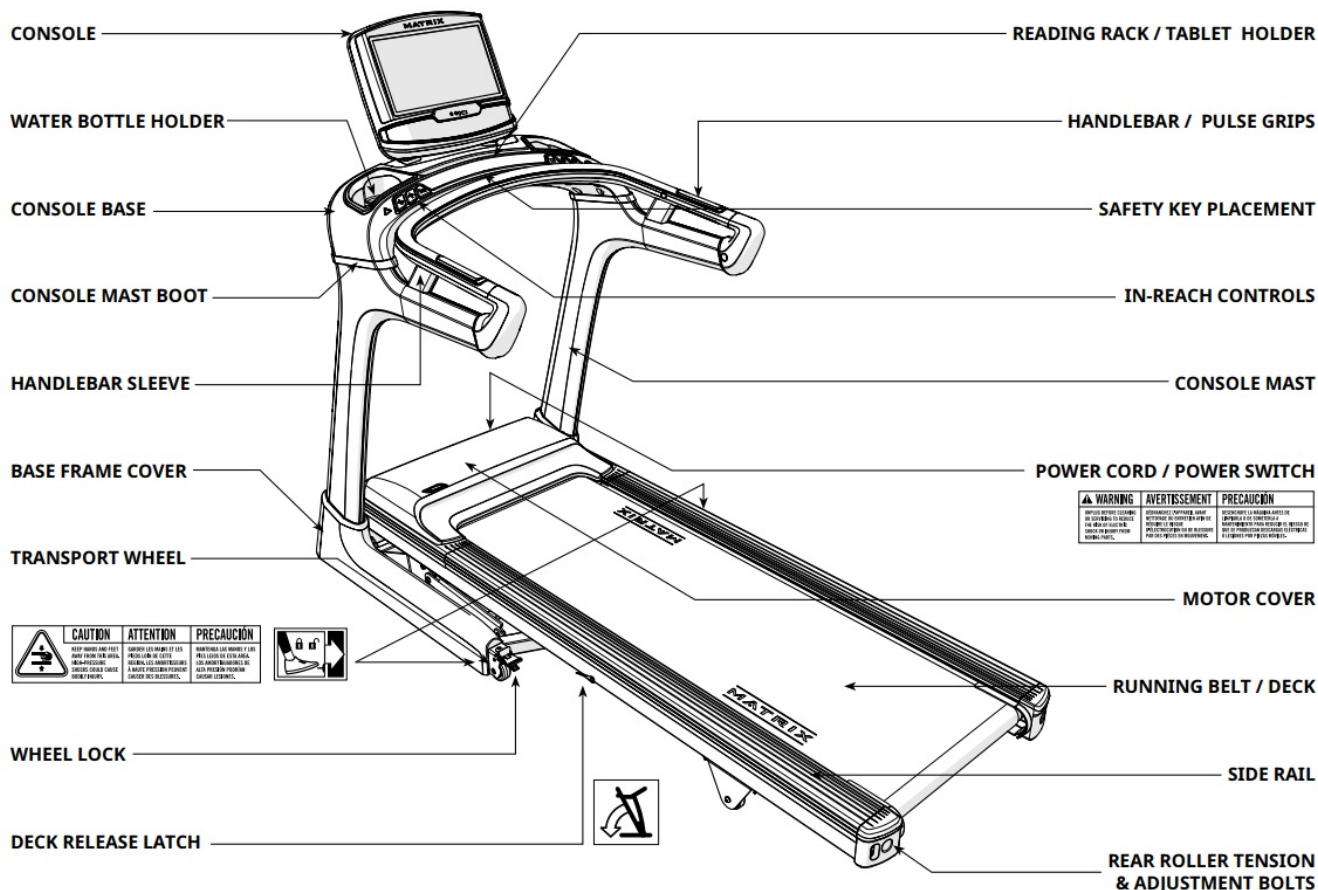
T50/T70



PARTS INCLUDED:

1 Treadmill Frame	T50: 4 Base Frame Covers
2 Console Masts	T70: 2 Base Frame Covers
2 Console Mast Boots	1 Console Back Cover
1 Console Base	1 Power Cord
1 Handlebar	1 Safety Key
2 Handlebar Sleeves	1 Hardware Kit
4 Handlebar Caps	T50 : 1 Bottle of Silicone Lubricant (for 2 applications)

Console sold separately



IMPORTANT: Do not tighten bolts until step 3 is complete.

A Open **HARDWARE FOR STEP 1**.

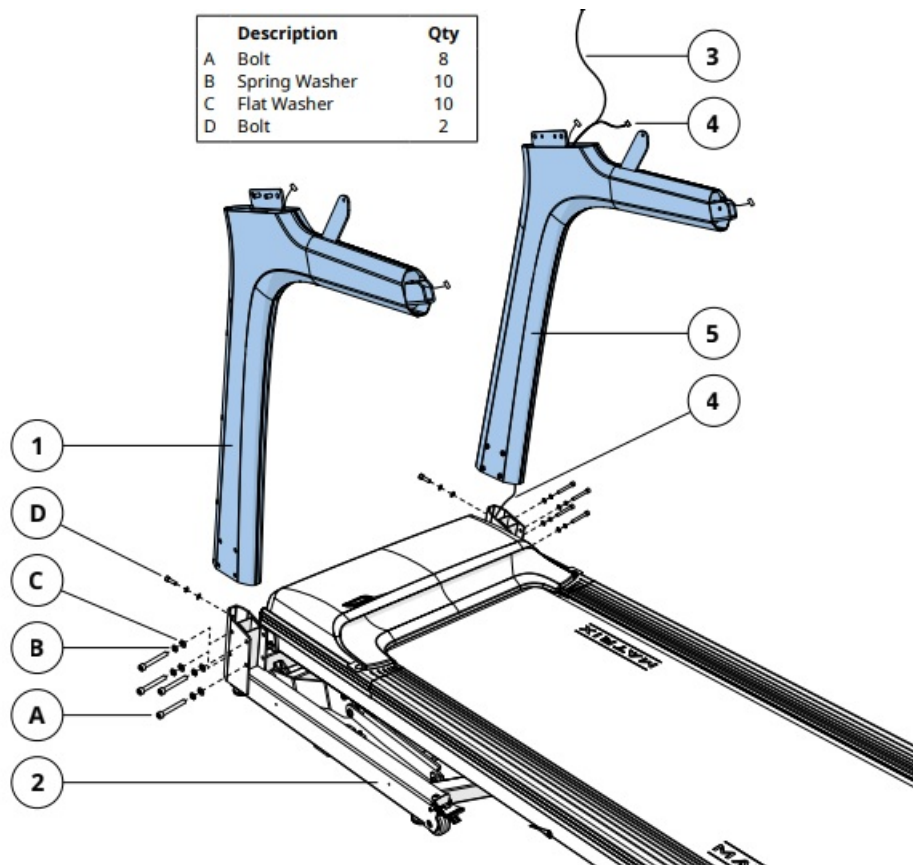
B Attach **LEFT CONSOLE MAST (1)** to **BASE FRAME (2)** using 4 **BOLTS (A)**, 4 **SPRING WASHERS (B)** and 4 **FLAT WASHERS (C)** from the side and 1 **BOLT (D)**, 1 **SPRING WASHER (B)** and 1 **FLAT WASHER (C)** from the rear. Tighten to 20 Nm / 15 lb-ft.

C Attach **LEAD WIRE (3)** to **CONSOLE CABLE (4)** and pull lead wire through **RIGHT CONSOLE MAST (5)**. After pulling the lead wire through the mast, the top of the console cable should be located at the top of the mast. Detach and discard lead wire.

D Repeat step B on other side.

NOTE: Be careful not to pinch any wires while attaching the right console mast.

Hardware For Step 1



A Open HARDWARE FOR STEP 2.

B Place CONSOLE MAST BOOTS (6) on top of CONSOLE MASTS (1 & 5).

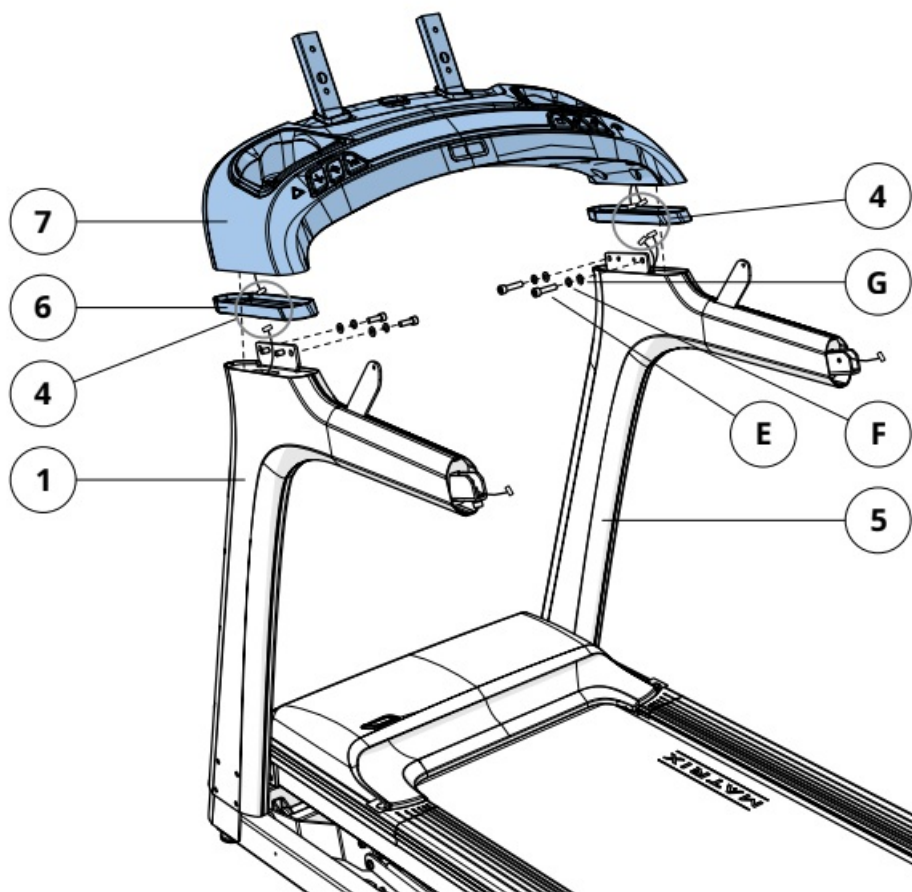
C Connect the CONSOLE CABLES (4) , discard the wire ties, and tuck the cables inside the CONSOLE MASTS (1 & 5) and slide CONSOLE BASE (7) into console masts.

D Attach CONSOLE BASE (7) to CONSOLE MASTS (1 & 5) using 4 BOLTS (E), 4 SPRING WASHERS (F) and 4 FLAT WASHERS (G). Tighten to 20 Nm / 15 lb-ft.

NOTE: Be careful not to pinch any wires while attaching the console base.

Hardware For Step 2

Description	Qty
E Bolt	4
F Spring Washer	4
G Flat Washer	4



A Open **HARDWARE FOR STEP 3.**

B Place **HANDLEBAR SLEEVES (8)** on top of **CONSOLE MASTS (1 & 5)**.

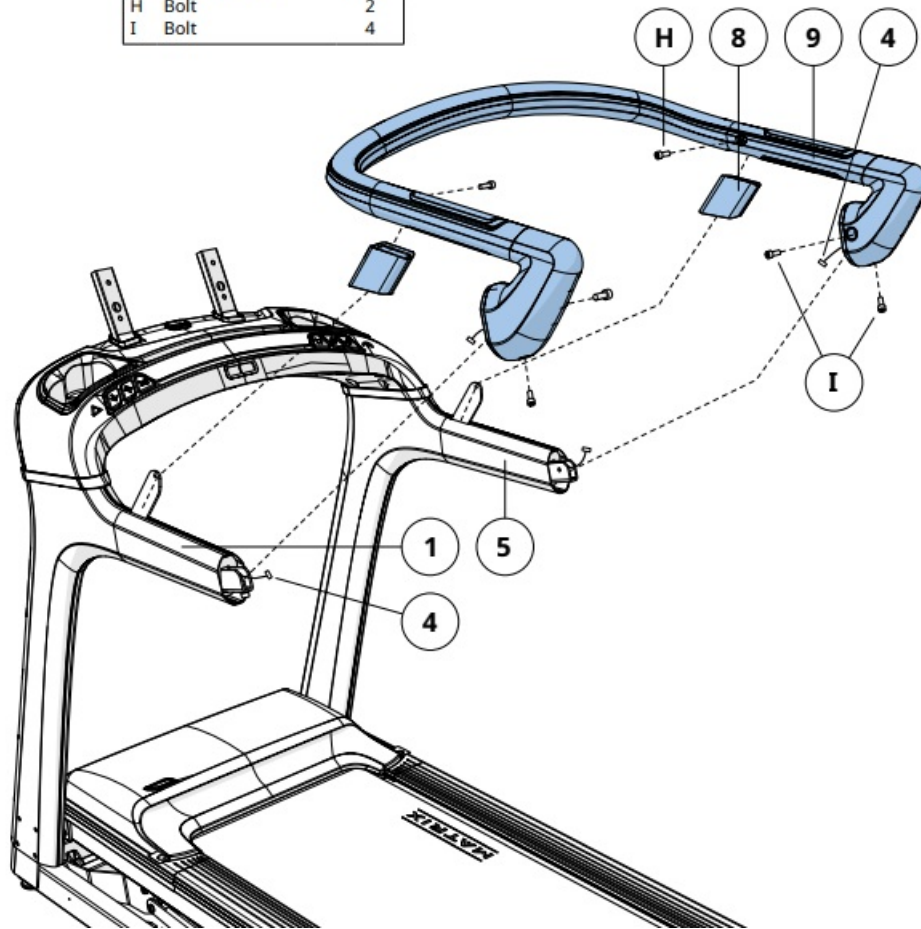
C Connect the **CONSOLE CABLES (4)** and tuck the cables inside the **CONSOLE MASTS (1 & 5)**.

D Attach **HANDLEBAR (9)** to **CONSOLE MASTS (1 & 5)** using 2 **BOLTS (H)** and 4 **BOLTS (I)**. Tighten to 15 Nm / 11 lb-ft.

E Tighten all bolts from steps 1–3.

Note: Be careful not to pinch any wires while attaching the handlebar.

	Description	Qty
H	Bolt	2
I	Bolt	4



A Open HARDWARE FOR STEP 4.

B Insert 4 HANDLEBAR CAPS (10) into HANDLEBAR (9).

C Attach BASE FRAME COVERS (11) to the BASE FRAME (2) using 2 SCREWS (J) from the inside and 2 SCREWS (K) from the outside.

D Repeat on other side.

Hardware For Step 4

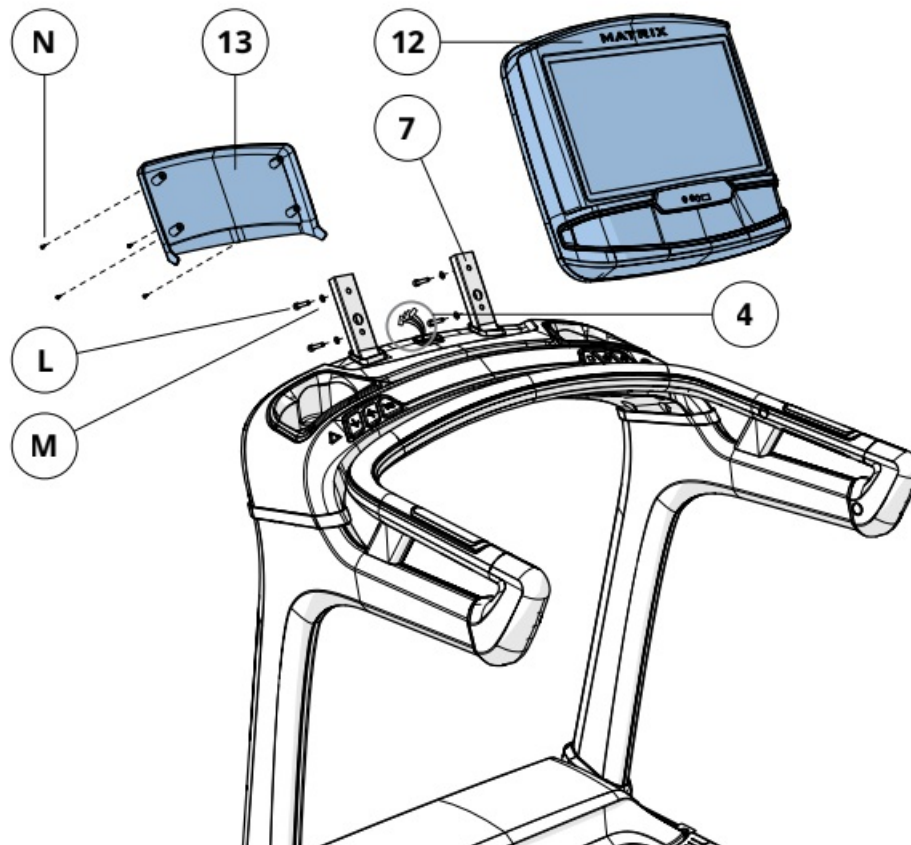
	Description	Qty
J	Screw (10 mm)	4
K	Screw (30 mm)	4

A Open HARDWARE FOR STEP 5.

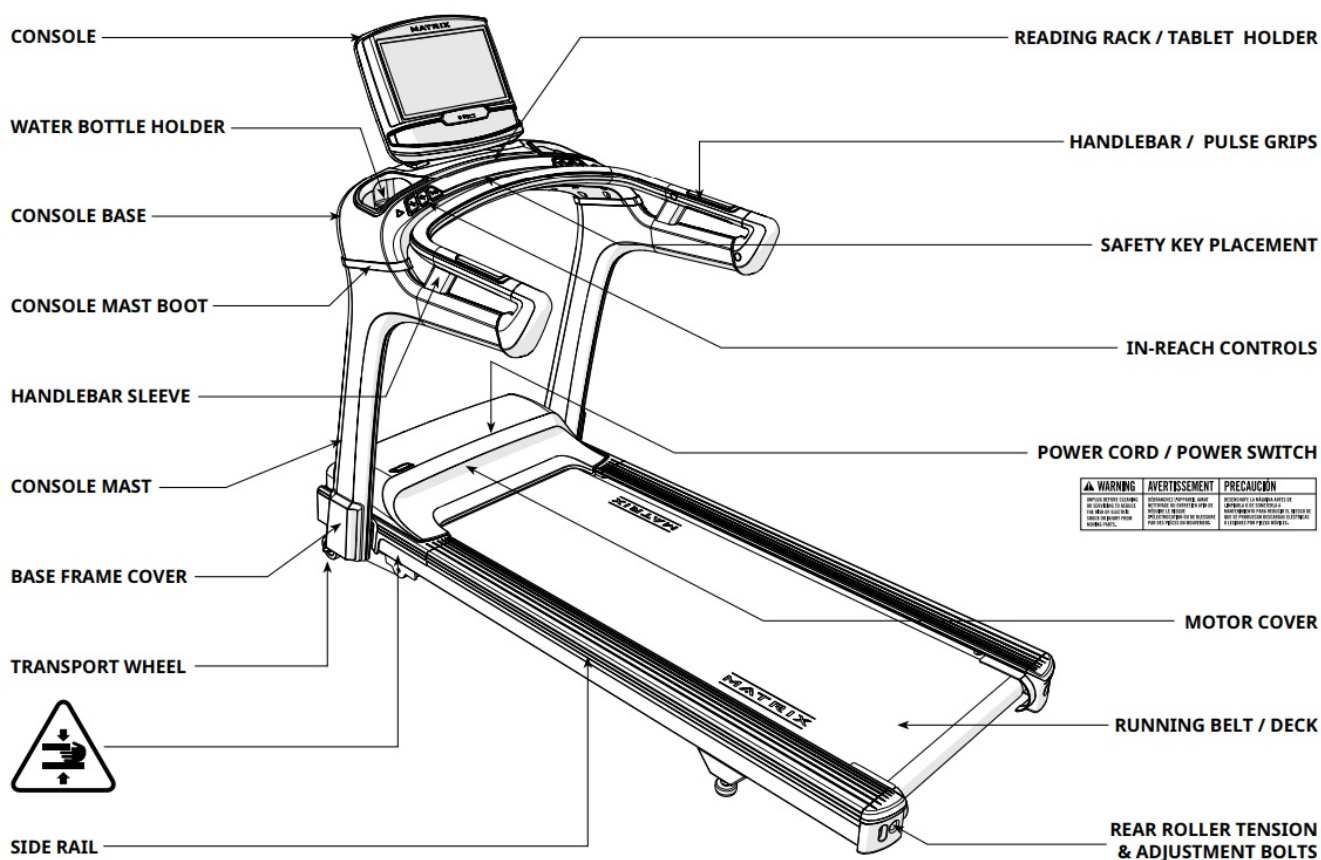
C Attach the **CONSOLE** (12) to the **CONSOLE BASE** (7) using 4 **BOLTS** (L) and 4 **FLAT WASHERS** (M).

Note: Be careful not to pinch any wires while attaching the console.

Description	Qty
L Bolt	4
M Hat Washer	4
N Screw	4



TF30/TF50 ASSEMBLY COMPLETE!



IMPORTANT: Do not tighten bolts until step 3 is complete.

A Open **HARDWARE** FOR STEP 1.

B Attach **LEFT CONSOLE MAST** (1) to **BASE FRAME** (2) using 4 **BOLTS** (A), 4 **SPRING WASHERS** (B) and 4

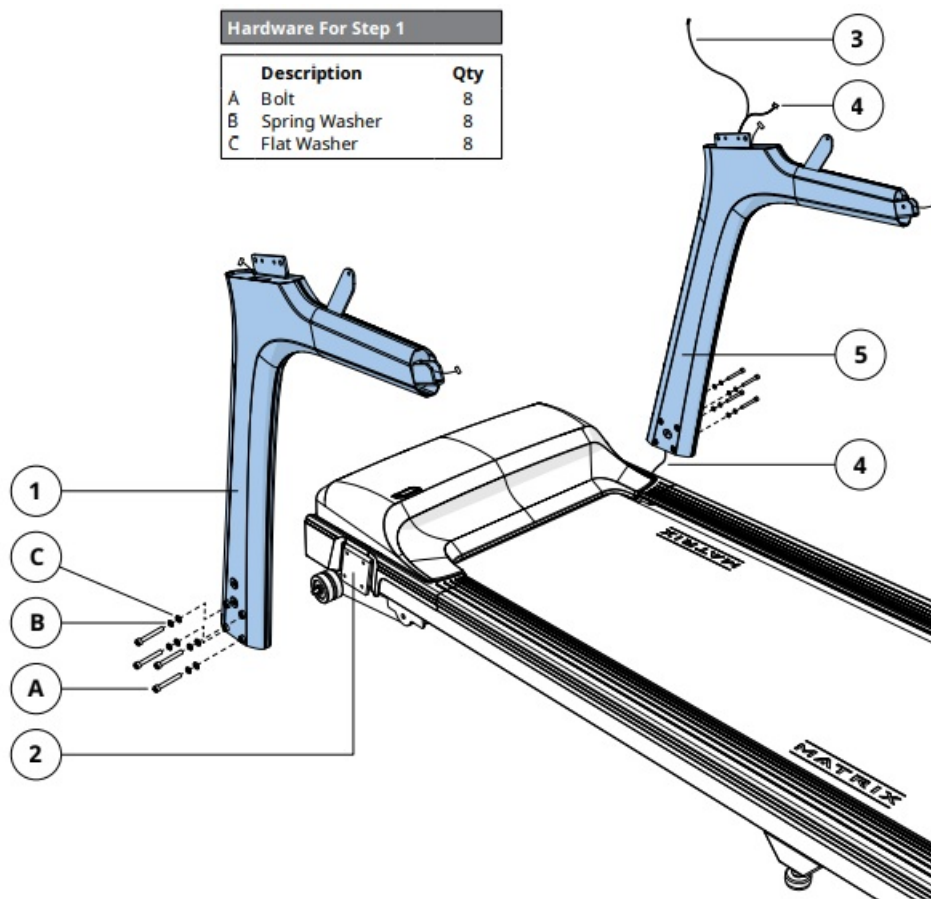
FLAT WASHERS (C). Tighten to 30 Nm / 22 lb-ft.

C Attach LEAD WIRE (3) to CONSOLE CABLE (4) and pull lead wire through RIGHT CONSOLE MAST (5). After pulling the lead wire through the mast, the top of the console cable should be located at the top of the mast. Detach and discard lead wire.

D Repeat step B on other side.

NOTE: Be careful not to pinch any wires while attaching the right console mast.

Hardware For Step 1



A Open HARDWARE FOR STEP 2.

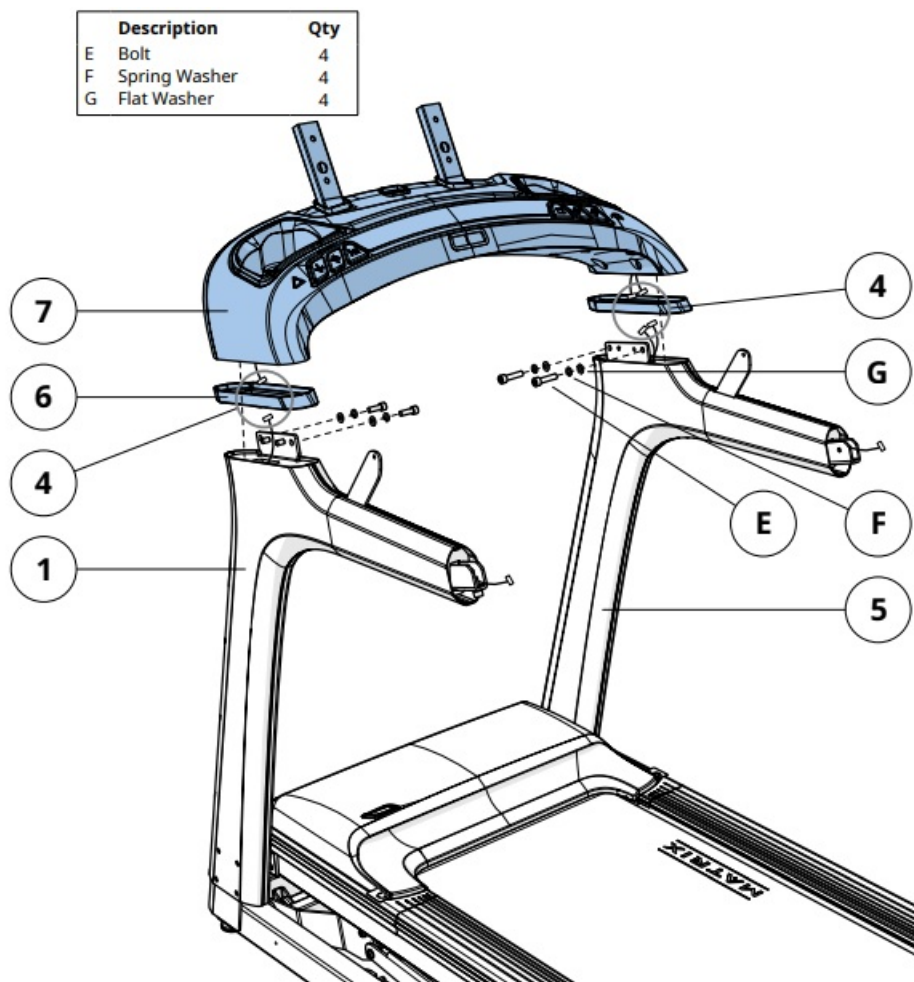
B Place CONSOLE MAST BOOTS (6) on top of CONSOLE MASTS (1 & 5).

C Connect the CONSOLE CABLES (4), discard the wire ties, and tuck the cables inside the CONSOLE MASTS (1 & 5) and slide CONSOLE BASE (7) into CONSOLE MASTS (1 & 5).

D Attach CONSOLE BASE (7) to CONSOLE MASTS (1 & 5) using 4 BOLTS (E), 4 SPRING WASHERS (F) and 4 FLAT WASHERS (G). Tighten to 20 Nm / 15 lb-ft.

NOTE: Be careful not to pinch any wires while attaching the console base.

Hardware For Step 2



A Open HARDWARE FOR STEP 3.

B Place HANDLEBAR SLEEVES (8) on top of CONSOLE MASTS (1 & 5).

C Connect the CONSOLE CABLES (4) and tuck the cables inside the CONSOLE MASTS (1 & 5).

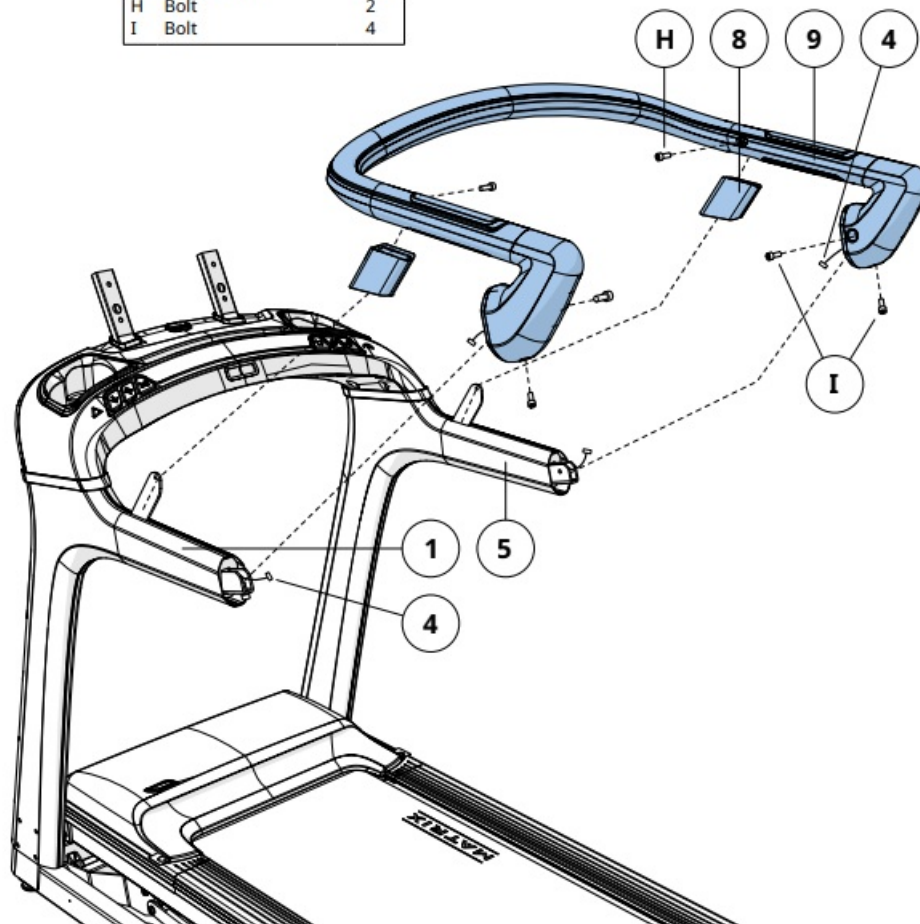
D Attach HANDLEBAR (9) to CONSOLE MASTS (1 & 5) using 2 BOLTS (H) and 4 BOLTS (I). Tighten to 15 Nm / 11 lb-ft.

E Tighten all bolts from steps 1–3.

Note: Be careful not to pinch any wires while attaching the handlebar.

Hardware For Step 3

	Description	Qty
H	Bolt	2
I	Bolt	4



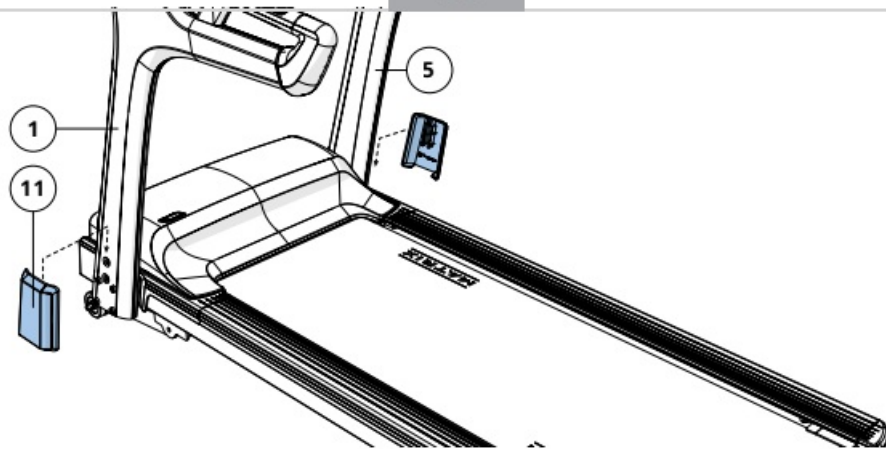
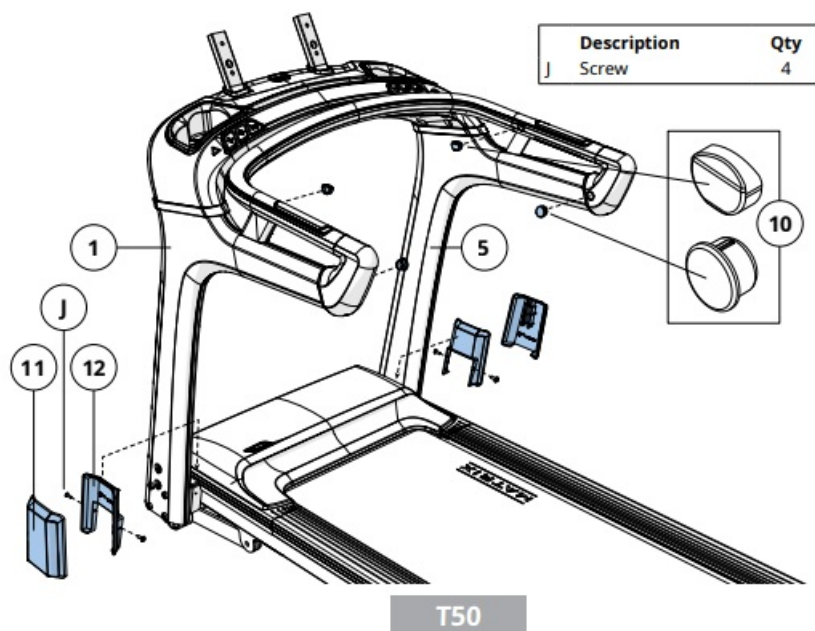
A Insert 4 HANDLEBAR CAPS (10) into HANDLEBAR (9).

B Slide OUTSIDE BASE FRAME COVERS (11) over bolts at the bottom of the CONSOLE MASTS (1 & 5).

C T50 only: Open HARDWARE FOR STEP 4.

D T50 only: Attach INSIDE BASE FRAME COVERS (12) using 4 SCREWS (J).

Hardware For Step 4 (T50 only)



A Open **HARDWARE FOR STEP 5**.

B Connect the **CONSOLE CABLES (4)** to the **CONSOLE (12)** and carefully tuck the excess cable into the **CONSOLE BASE (7)**.

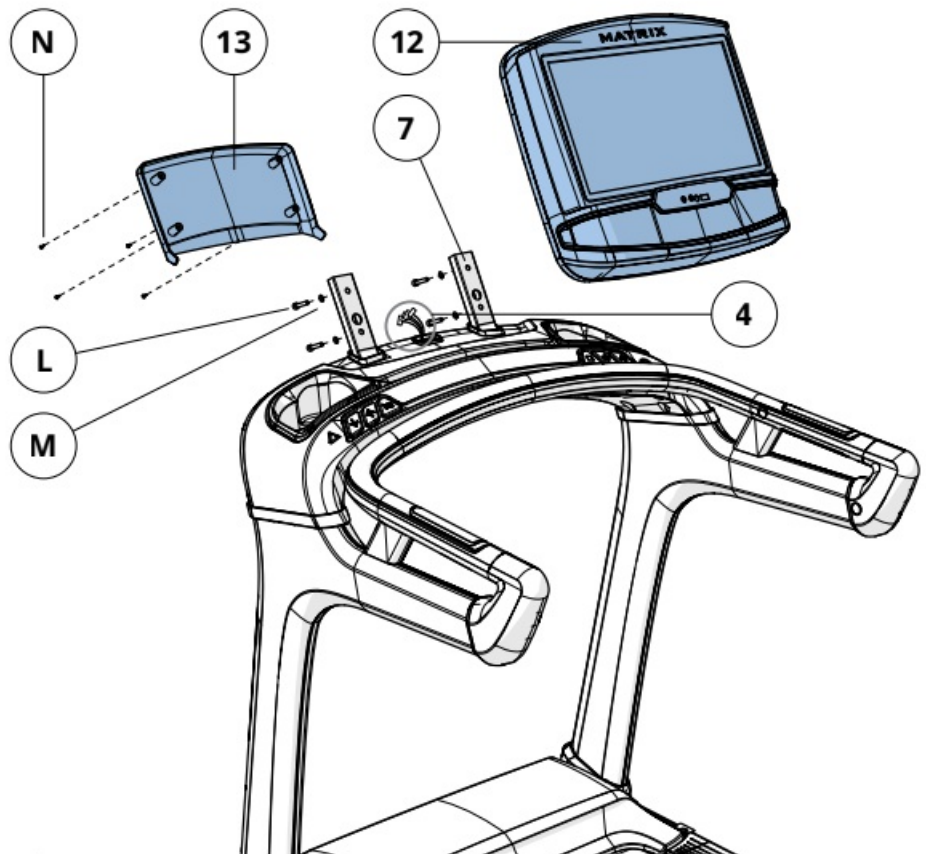
C Attach the **CONSOLE (12)** to the **CONSOLE BASE (7)** using 4 **BOLTS (L)** and 4 **FLAT WASHERS (M)**.

D Attach the **CONSOLE BACK COVER (13)** to the **CONSOLE (12)** using 4 **SCREWS (N)**.

Note: Be careful not to pinch any wires while attaching the console.

Hardware For Step 5

	Description	Qty
L	Bolt	4
M	Flat Washer	4
N	Screw	4



T50/T70 ASSEMBLY COMPLETE!



MATRIX

© 2020 Johnson Health Tech

Rev 1.1 B GER DUT SPE ITA PRB GRK FRE ENG

Documents / Resources



[MATRIX TF50XR Treadmill](#) [pdf] User Manual
TF30, T50, TF50XR Treadmill, Treadmill, T70