

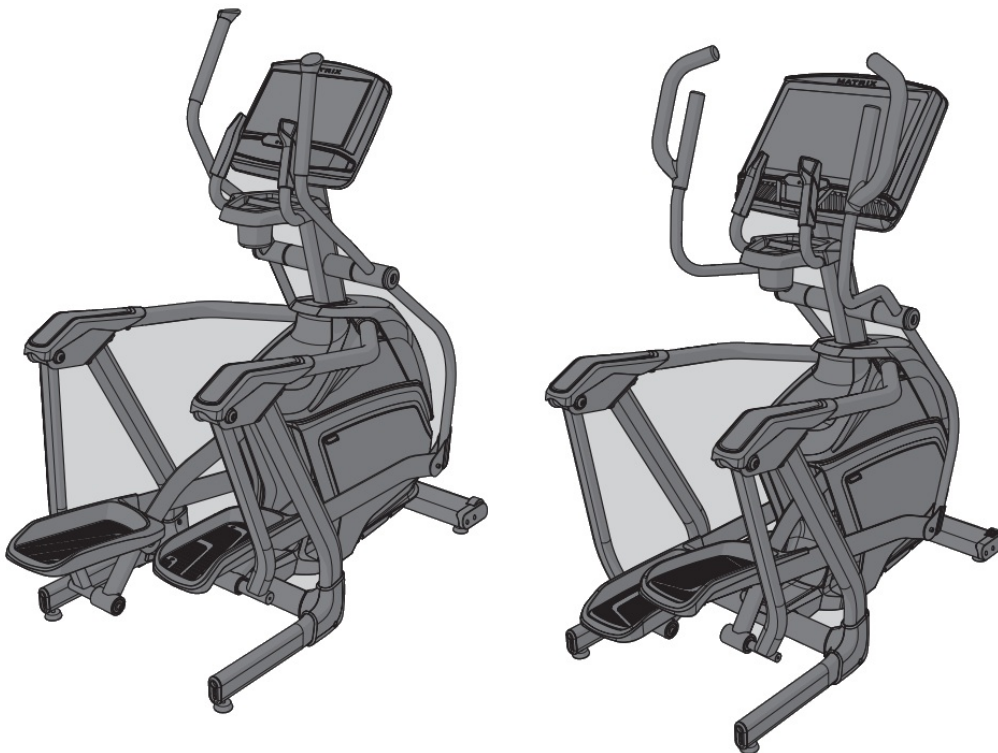


## MATRIX E50XIR Elliptical Trainer User Manual

[Home](#) » [MATRIX](#) » MATRIX E50XIR Elliptical Trainer User Manual 

# MATRIX

E30/E50



### Contents

- [1 ASSEMBLY](#)
- [2 SERIAL NUMBER LOCATION](#)
- [3 Documents / Resources](#)



## ASSEMBLY

### WARNING!

There are several areas during the assembly process that special attention must be paid. It is very important to follow the assembly instructions correctly and to make sure all parts are firmly tightened. If the assembly instructions are not followed correctly, the equipment could have parts that are not tightened and will seem loose and may cause irritating noises. To prevent damage to the equipment, the assembly instructions must be reviewed and corrective actions should be taken.

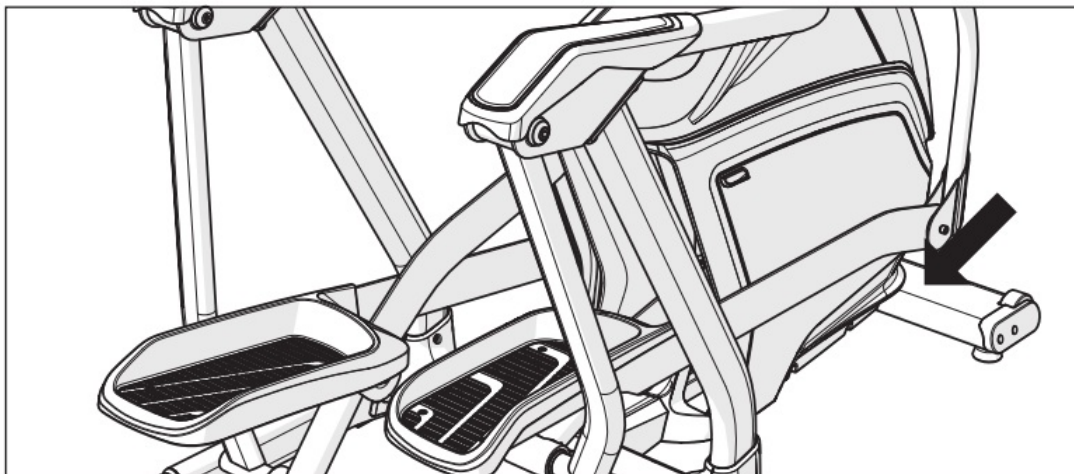
### UNPACKING

Unpack the equipment where you will be using it. Place the carton on a level flat surface. Never open box when it is on its side.

### IMPORTANT NOTES

During each assembly step, ensure that ALL nuts and bolts are in place and partially threaded. Several parts have been pre-lubricated to aid in assembly and usage. Please do not wipe this off. If you have difficulty, a light application of lithium grease is recommended.

### SERIAL NUMBER LOCATION



Before proceeding, find your elliptical's serial number located on a barcode sticker and enter it in the space provided below.

**SERIAL NUMBER**

**MODEL NAME**

F E30

F E50 MATRIX ELLIPTICAL

### TOOLS INCLUDED:

- 5 mm Allen Wrench
- 6 mm Allen Wrench
- 13/17 mm Flat Wrench
- Phillips Screwdriver

### PARTS INCLUDED:

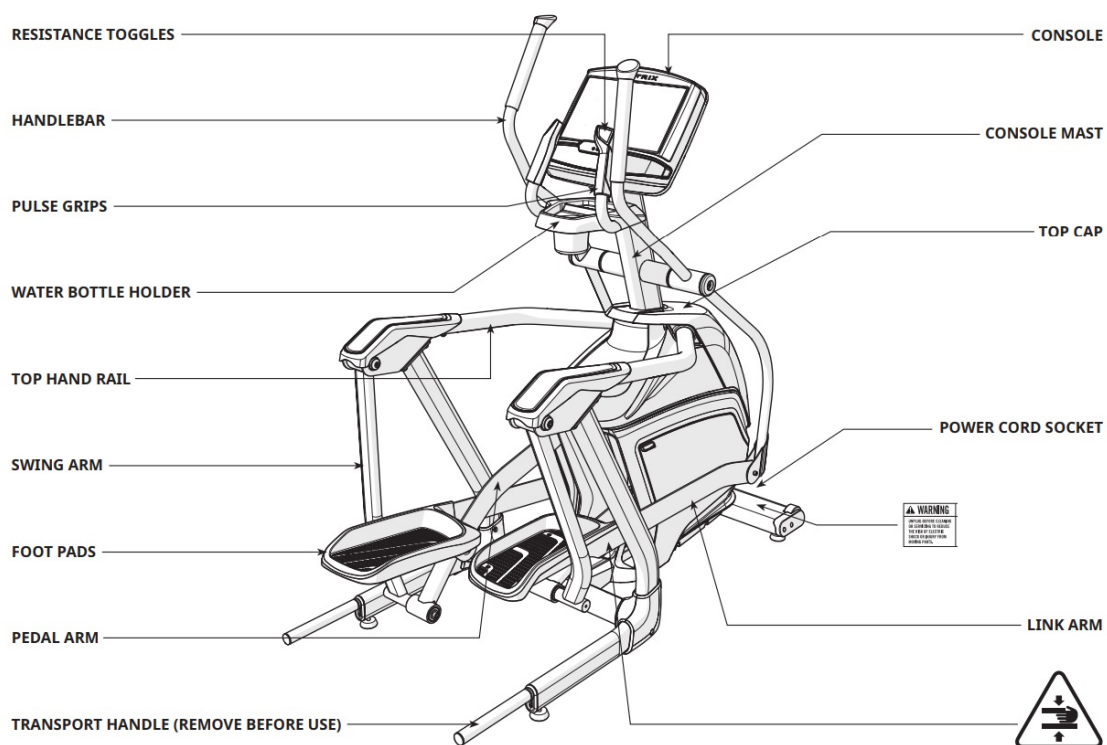
- 1 Elliptical Frame

- 1 Console Mast
- 1 Console Mast Boot
- 2 Handlebars
- 2 Handlebar Caps
- 2 Pedals with Inserts
- 2 Transport Handles
- 1 Power Cord
- 1 Hardware Kit

## NEED HELP?

If you have questions or if there are any missing parts, contact Customer Tech Support. Contact information is located on the information card.

\* Use the information above when calling for service.



A Open **HARDWARE FOR STEP 1**.

B Remove 4 **PRE-INSTALLED SCREWS (5)** and **TOP CAP COVER (6)** from **MAIN FRAME (4)**.

C Carefully pull the **CABLE (1)** through the **CONSOLE MAST (2)** using the **LEAD WIRE (3)** located inside the **CONSOLE MAST (2)**.

D Attach **CONSOLE MAST (2)** to **MAIN FRAME (4)** using 4 **BOLTS (A)** and 4 **FLAT WASHERS (B)**. Tighten to 40 Nm / 29 lb-ft.

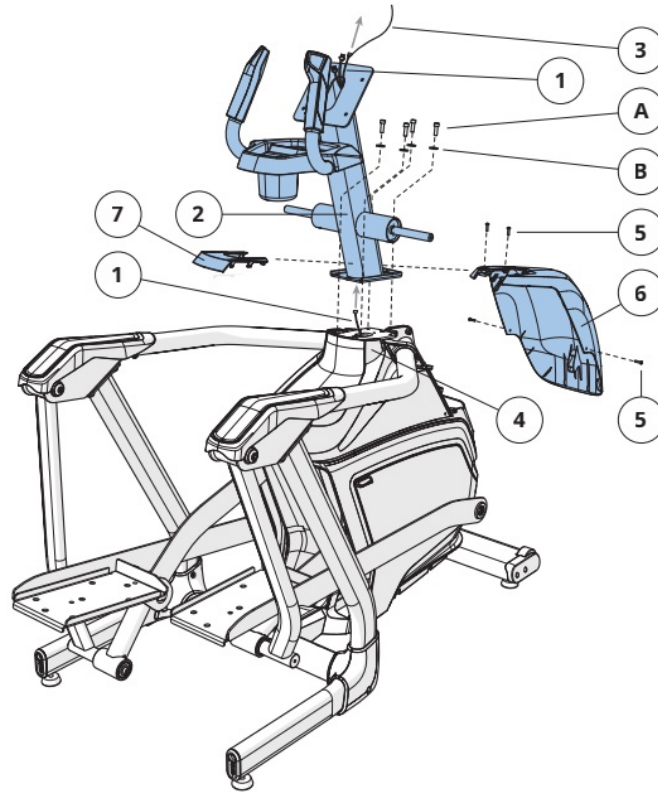
E Attach the **TOP CAP COVER (6)** to the **MAIN FRAME (4)** using 4 **PRE-INSTALLED SCREWS (5)**.

F Attach the **CONSOLE MAST BOOT (7)** to the **TOP CAP COVER (6)** by snapping it into place.

## Hardware For Step 1

	Description	Qty
A	Bolt	4
B	Flat Washer	4

**Note:** Be careful not to pinch any wires while attaching the upper assembly.



A Open **HARDWARE FOR STEP 2**.

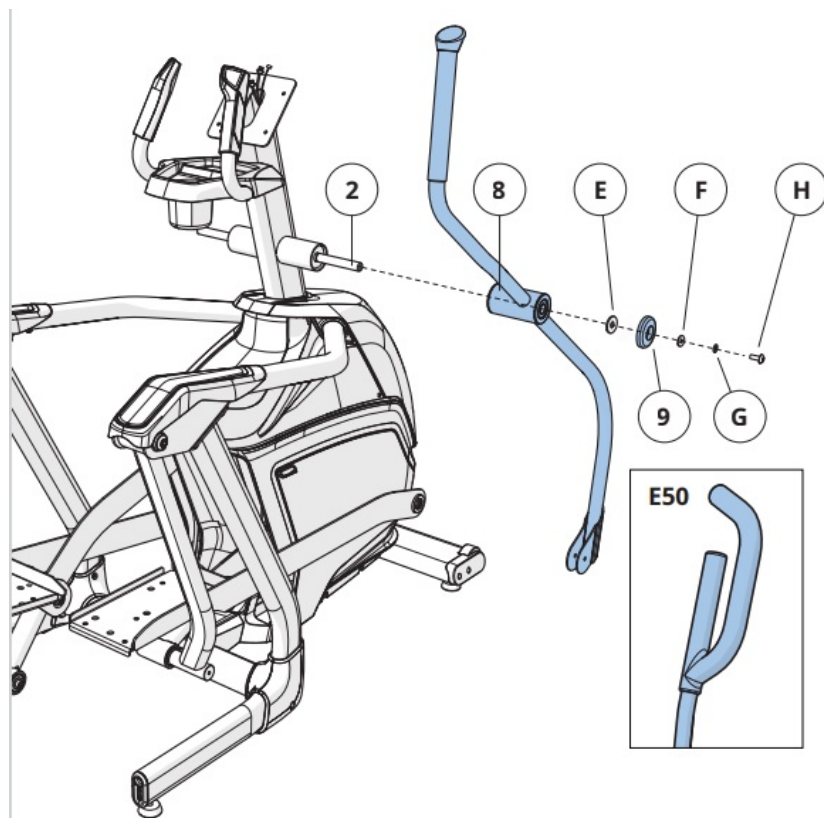
B Slide **LOWER DUAL ACTION ARM (8)** onto the **CONSOLE MAST (2)**

C Attach using 1 **FLAT WASHER (E)**, 1 **HANDLEBAR CAP (9)**, 1 **FLAT WASHER (F)**, 1 **SPRING WASHER (G)** and 1 **BOLT (H)**. Tighten to 40 Nm / 29 lb-ft.

D Repeat on other side.

### Hardware For Step 3

	Description	Qty
E	Flat Washer (25 mm)	2
F	Flat Washer (19 mm)	2
G	Spring Washer	2
H	Bolt	2



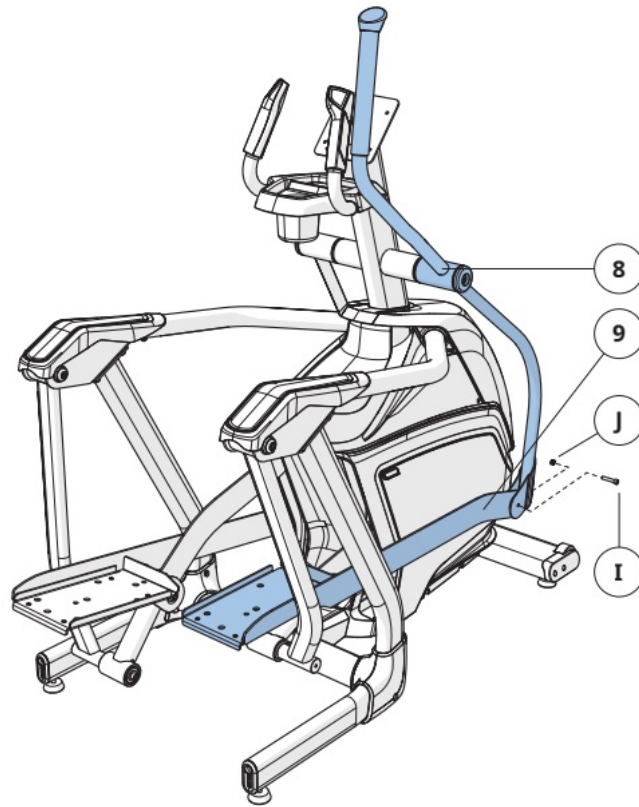
A Open HARDWARE FOR STEP 3.

B Attach the LINK ARM (9) to the HANDLEBAR (8) using 1 BOLT (I). 1 NUT (J).

C Repeat on other side.

### Hardware For Step 3

	Description	Qty
I	Bolt	2
J	Nut	2



A Open HARDWARE FOR STEP 4.

B Connect the CABLES (1) to the CONSOLE (13) and carefully tuck the excess cable into the CONSOLE MAST (2).

C Attach the CONSOLE (13) to the CONSOLE MAST (2) using 4 BOLTS (K).

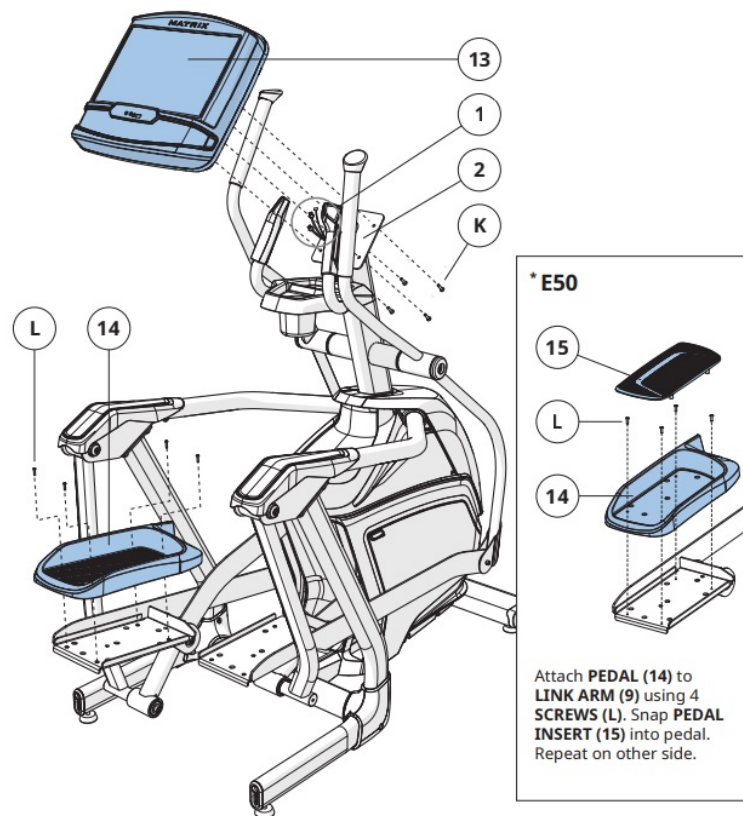
D Attach PEDAL (14) to LINK ARM (9) using 4 SCREWS (L). Repeat on other side.\*

#### Hardware For Step 4

	Description	Qty
K	Bolt	4
L	Screw	8

**Note:** Be careful not to pinch any wires while attaching the console.

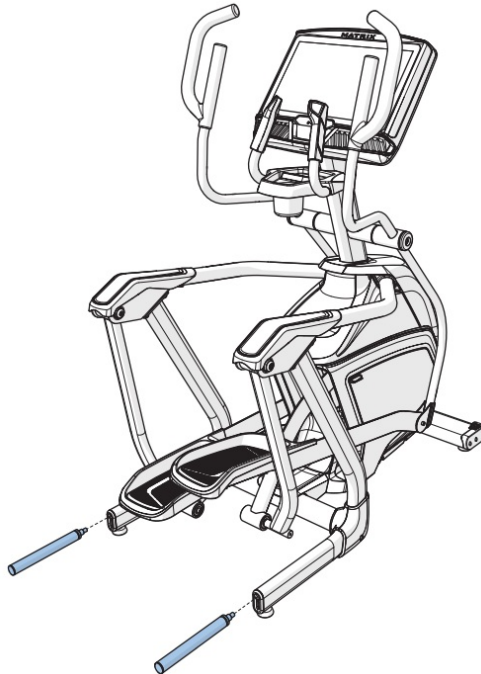




### ASSEMBLY COMPLETE!

A To relocate elliptical, install TRANSPORT HANDLES as shown.

B Remove TRANSPORT HANDLES before using elliptical.



# MATRIX

© 2020 Johnson Health Tech  
Rev 1.0 B



**[MATRIX E50XIR Elliptical Trainer](#)** [pdf] User Manual  
E30, E50XIR Elliptical Trainer, Elliptical Trainer, Trainer, E50

Manuals+.