



## MATRIX AUDIO MA-1 Power Amplifier User Manual

[Home](#) » [MATRIX AUDIO](#) » MATRIX AUDIO MA-1 Power Amplifier User Manual 

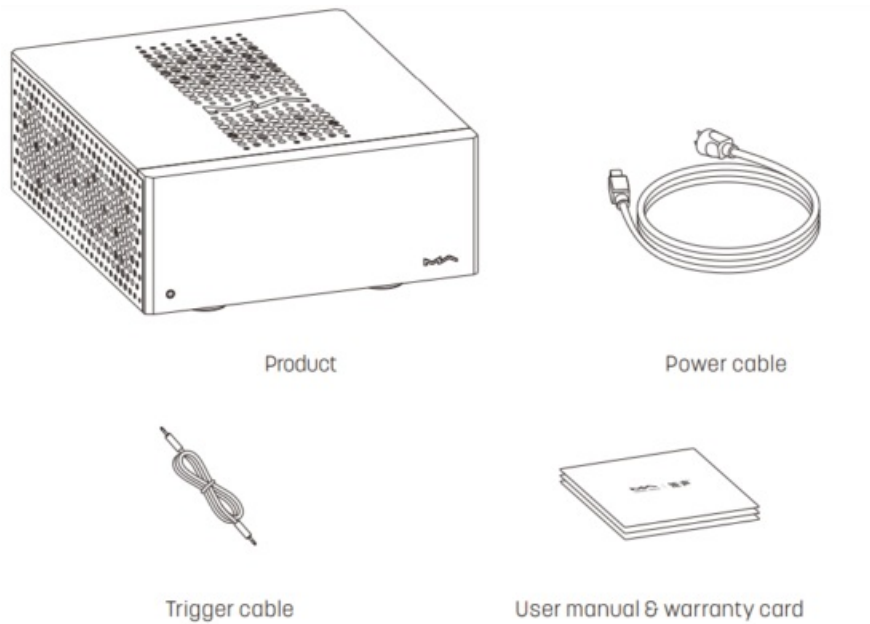


**MM-1User Manual**  
**Power A moplifier**

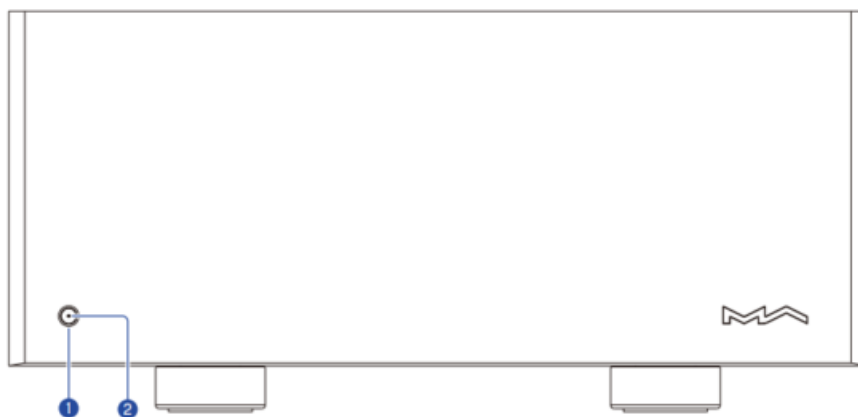
## Contents

- [1 Packing list](#)
- [2 Parts and names](#)
- [3 Speaker Connection](#)
- [4 Audio Specifications](#)
- [5 Attention](#)
- [6 Documents / Resources](#)
- [6.1 References](#)

## Packing list



## Front



### 1. Power on/Standby

After connecting to power supply, press this button to power on the unit.

Hold it for 1 seconds to let the device enter standby.

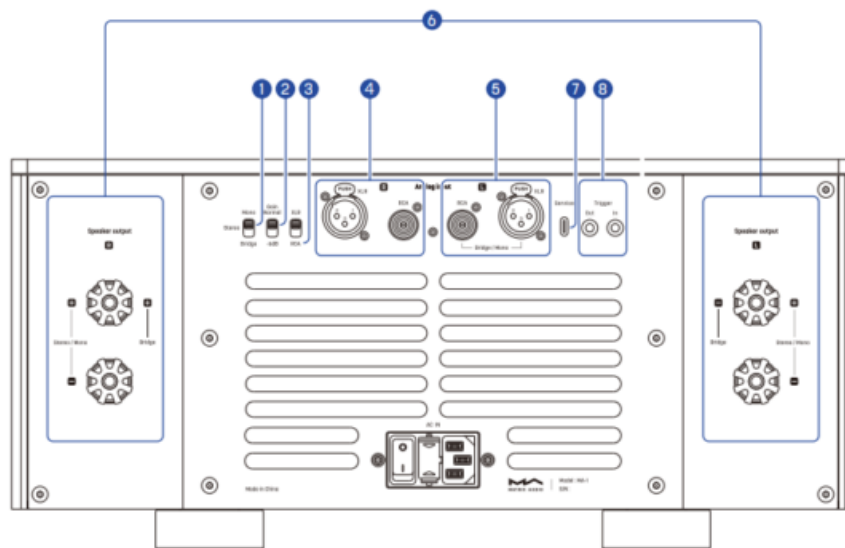
### 2. LED indicator

The LED indicator will go off when the device is standby. It flushes when the device is delayed starting, and will keep lit up after the device is started,

## Parts and names

### Rear

1.



### Working mode switch

This switch changes the working mode of the device between Mono mode, Stereo mode and Bridged mode. To avoid misoperation, toggling this switch when the device is on will not change the current working mode immediately. The switch will take effect after the device enters standby and starts again.

### 2. Gain setting switch

This switch changes the gain of the amplifier. The normal gain is +30dB, which can be attenuated to +24dB, to adapt to different preamplifiers or speakers.

### 3. Input switch

Use this switch to select XLR or RCA as the input channel of the amplifier.

### 4. Right channel inputs

In stereo mode, use an RCA or XLR cable to connect to the right channel output of the preamplifier. In Bridged and Mono mode, these input ports will not work.

### 5. Left channel inputs

In stereo mode, use an RCA or XLR cable to connect to the left channel output of the preamplifier.

In Bridged and Mono mode, use an RCA or XLR cable to connect to one of the output ports of the preamplifier.

### 6. speaker output

Supports 2-16Ω speakers.

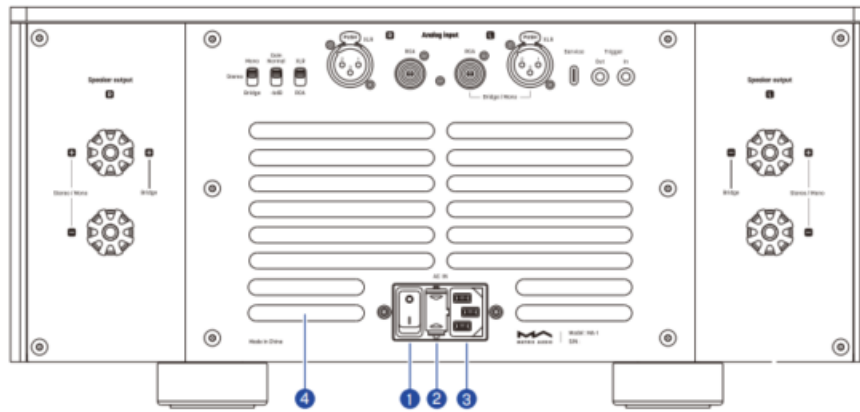
### 7. USB+Type-C

For firmware update

### 8. Trigger input/output

Connect to audio devices with trigger ports through a 83.5 mm mono plug cables, to achieve a linkage control between MA-1 and other devices. The trigger output provides a 12V DC signal.

### Rear



#### 1. Power switch

If you need the device to be turned off completely, please turn off this switch.

Otherwise, there is still about 1W power consumption in standby mode.

#### 2. Fuse case

Please use 0.5\*20mm time-delay fuse.

#### 3. Power input

Please use a power cable which includes an earth wire and ensure you have a reliable earth wire connection.

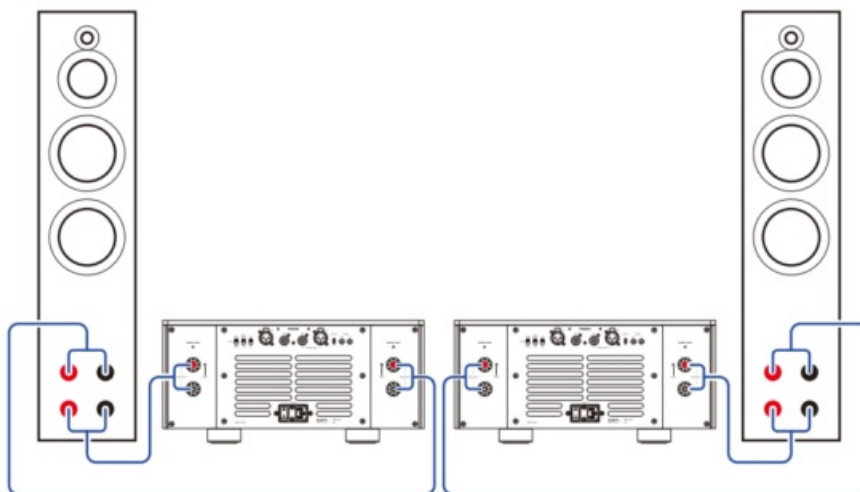
Otherwise, the casing of the device may have a slightly charged touch.

#### 4. Airvents

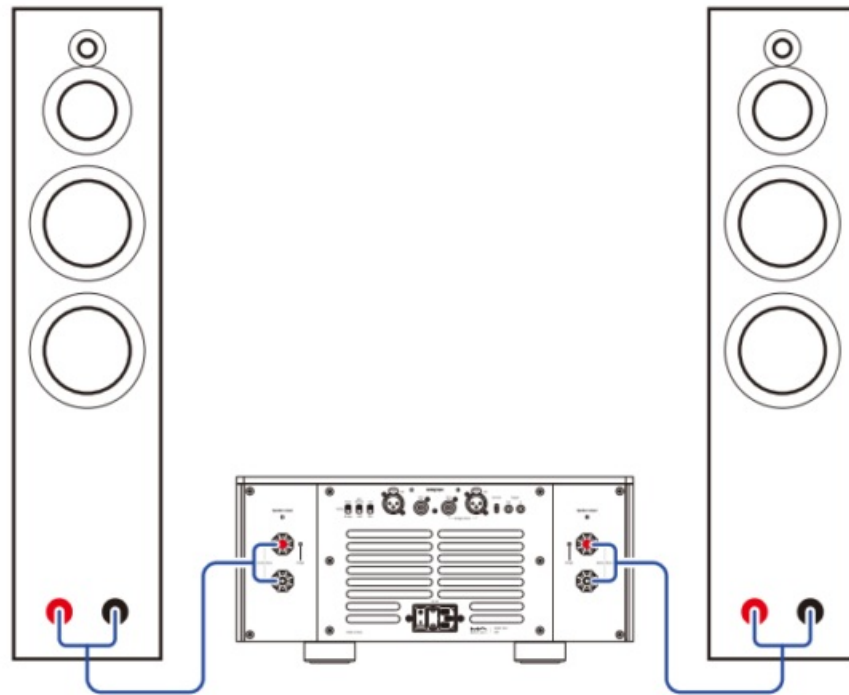
Do not block this area to ensure effective air movement,

### Speaker Connection

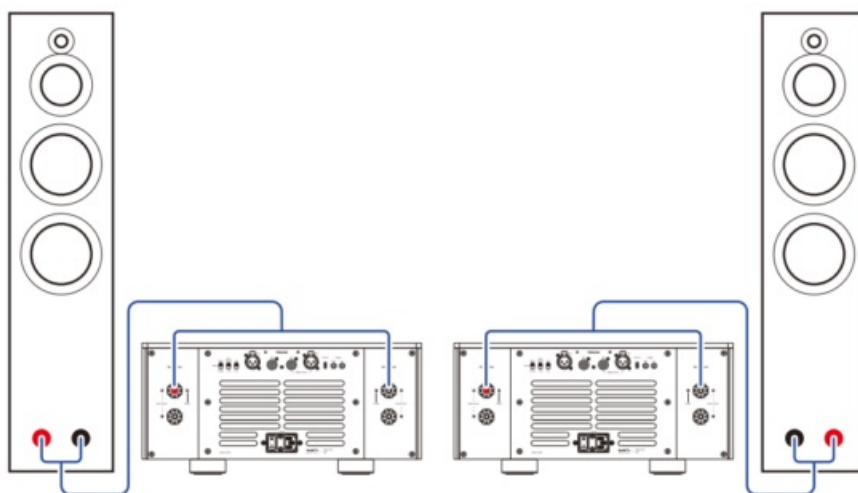
Please refer to the diagram below for speaker connection in [Mono] mode.



Please refer to the diagram below for speaker connection in [Stereo] mode:



Please refer to the diagram below for speaker connection in [Bridged] mode.



## Audio Specifications

	Stereo/Mono mode	Bridged mode
XLR Input Impedance	40k $\Omega$	
RCA Input Impedance	20k $\Omega$	
Input Sensitivity	1.48Vrms	1Vrms
Output Power	250Wrms x2@8 $\Omega$ 450Wrms x2@4 $\Omega$	500Wrms x1@8 $\Omega$ 900Wrms x1@4 $\Omega$ (Measured under music signal)
Frequency Response	20-20kHz (+0 -0.15dB) 160kHz@-3dB	
SNR	-119dB@+24dB A-weighting -123dB@+30dB A-weighting	
THD+N	<0.02%@250W 8 $\Omega$	<0.06%@500W 8 $\Omega$
Crosstalk	-125dB +24dB/+30dB	
Gain		
Load Impedance	2-16 $\Omega$	4-16 $\Omega$
Damping Factor	350@8 $\Omega$ 1kHz	

### Trigger

Trigger In:DC 6-12V <10mA

Trigger Out: DC12V/50mA MAX

### Power

Power Voltage: AC100V-120V 50/60Hz /AC 220V-240V 50/60Hz factory-fixed

Standby Power Consumption: <1W

Idle Power Consumption: 260-350W

Maximum Power Consumption: <1250W

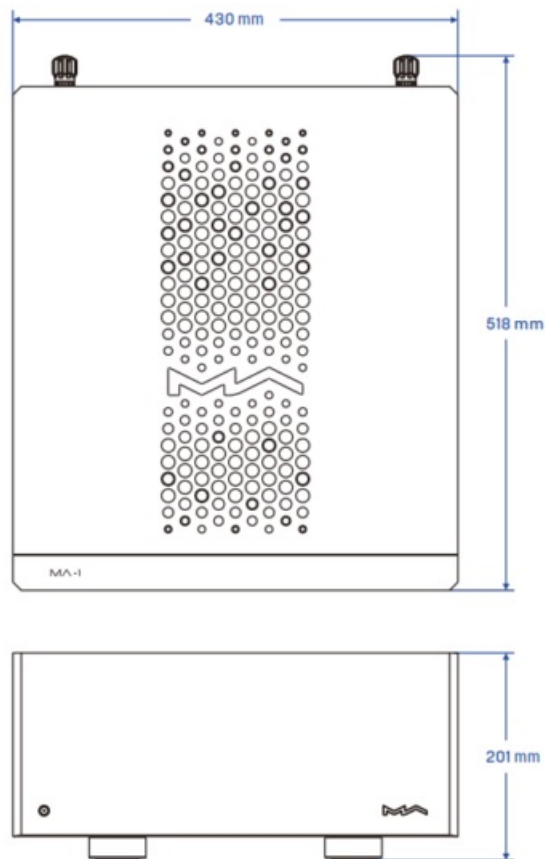
### Weight & size

Weight: 42.4kg (93.5 pounds)

Size: Width: 430 mm(16.93inches)

Depth: 518 mm (20.39 inches)

Height: 201 mm (7 91inches)



« For improvement purpose, specifications subject to changes without prior notice

## Attention

- This product is for indoor use only.
- For full ventilation, it is recommended to reserve a space of larger than 5 cm around the device.
- Do not cover the air vents with stuffs such as papers, tablecloths, and curtains to obstruct ventilation.
- Do not place stuff with flame, such as lighted candles, on the device.
- If the device is used in tropical areas, please be careful to prevent insects from entering the unit through the air vents.
- The device must not be subject to water droplets or splashes. Please do not place stuffs filled with liquids such as vases and cups on or near the device.

**Matrix Electronic Technology Co., LTD**



matrix-digicom



+86-29-862m22



Room206 BlockB, #68 Mingguang Road Xian, Shaanxi

## Documents / Resources



MA-1 User Manual  
\*\*\*\*\*

## [MATRIX AUDIO MA-1 Power Amplifier](#) [pdf] User Manual MA-1 Power Amplifier, MA-1, Power Amplifier, Amplifier

## References

- [User Manual](#)

### Manuals+, Privacy Policy

This website is an independent publication and is neither affiliated with nor endorsed by any of the trademark owners. The "Bluetooth®" word mark and logos are registered trademarks owned by Bluetooth SIG, Inc. The "Wi-Fi®" word mark and logos are registered trademarks owned by the Wi-Fi Alliance. Any use of these marks on this website does not imply any affiliation with or endorsement.