



matatalab VinciBot Coding Robot Set User Guide

[Home](#) » [matatalab](#) » matatalab VinciBot Coding Robot Set User Guide 

matatalab **EDU** VinciBot

Coding Robot Set
User Guide



Contents

- [1 VinciBot Coding Robot Set](#)
- [2 Parts List](#)
- [3 Turn on/off](#)
- [4 Play With Vincibot](#)
- [5 Connect VincetBot](#)
- [6 Product Overview](#)
- [7 Specification](#)
- [8 Safety Instructions](#)
- [9 Caution](#)
- [10 Support](#)
- [11 Warranty](#)
- [12 Caution-electric Toy](#)
- [13 Documents / Resources](#)
- [14 Related Posts](#)

VinciBot Coding Robot Set



Parts List





VinciBot x1



IR remote control x1



User guide x1

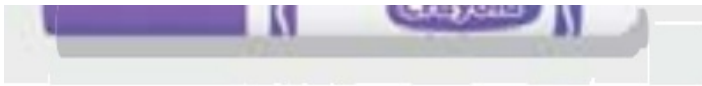


Challenge booklet x1



Double-sided map x1
(line following map / blank map)





Washable marker x1




USB-C cable x1

Turn on/off

Press and hold the Power button for 2 seconds to turn Vinci8ot on. The power indicator turns on

Press and hold for 2 seconds to turn on and off



The diagram shows a top-down view of the VinciBot's control panel. A curved arrow points to the power button, which is a square icon with a vertical line through it. The button is located below a horizontal line and above a small white indicator light.

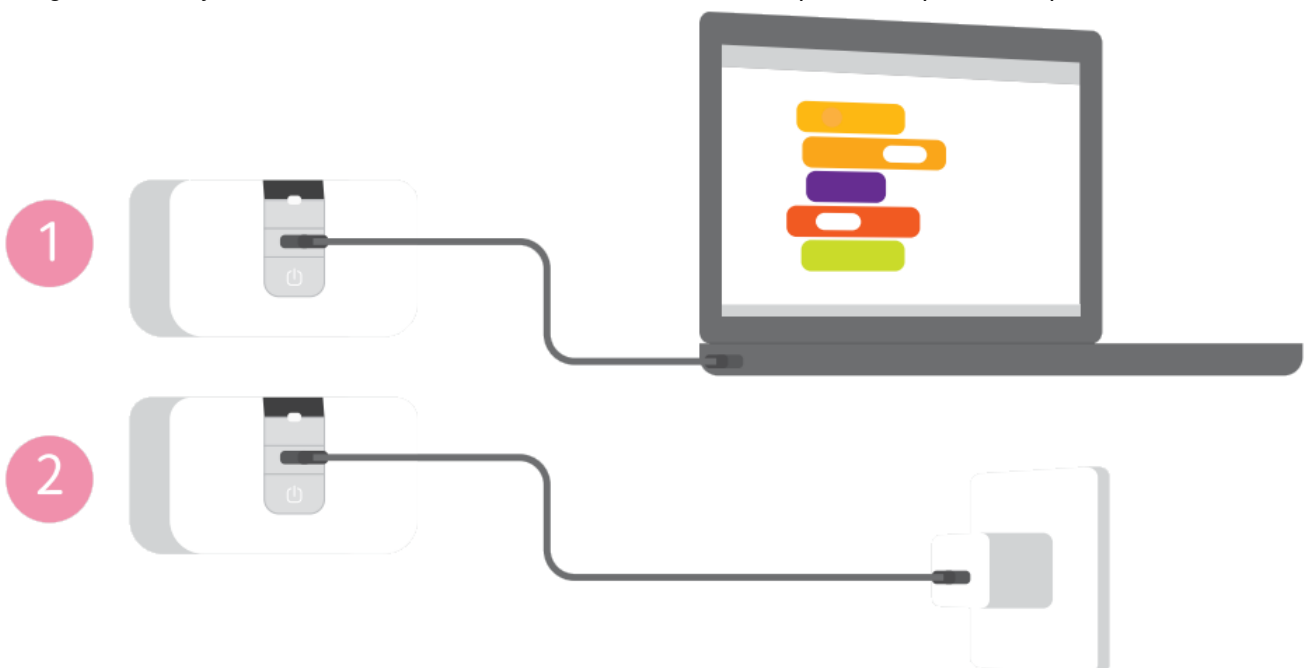
* If VinciBot is not turned on, charge it first.

Battery status

Battery Status	Indicator
Low	Red power button icon
Medium	Yellow power button icon
High	Grey power button icon

Charging

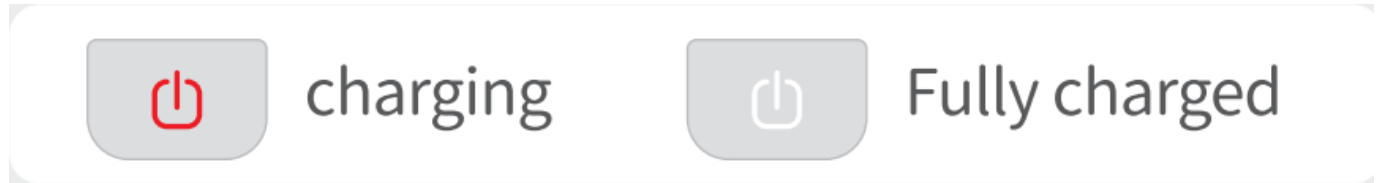
To charge the battery, connect the USB-C cable to Vinci8ot and a computer or a power adaptor.



Charge VinciBot immediately when the battery is low.
Use a 5V/2A power adapter to charge the robot.
All functions of the robot are disabled while charging.

This toy is only to be connected to equipment bearing the following symbol 

Charging status

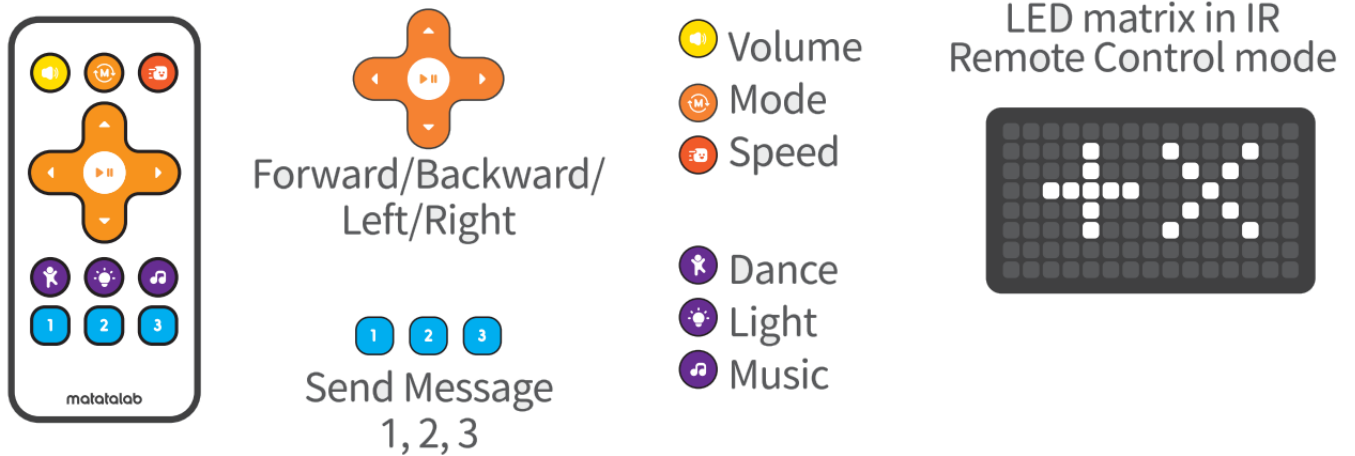


Play With Vincibot

There are three modes preset: IR Remote Control mode, Line Following mode, and Drawing mode. You can switch between them through the button on the remote control. Start your coding journey with Vinci Bot now!

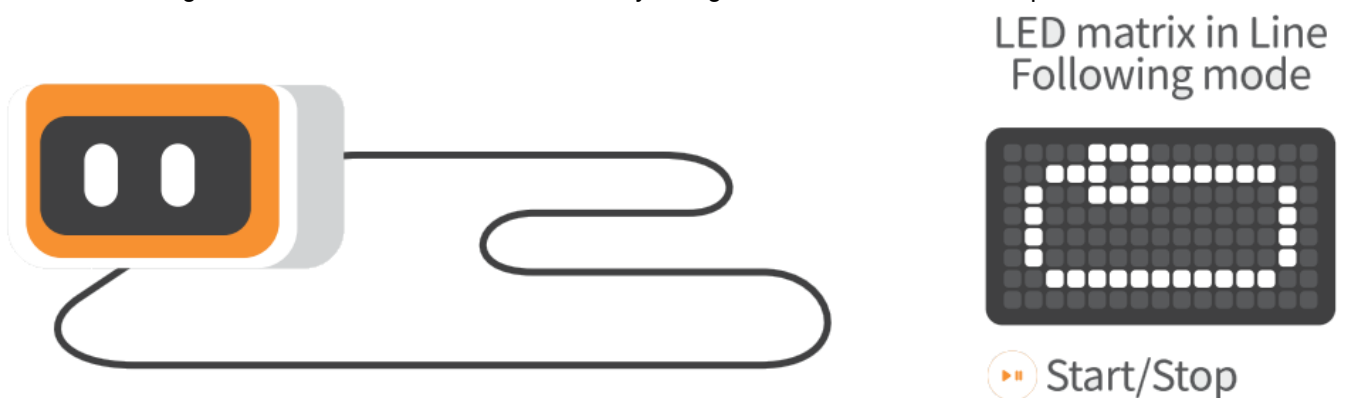
IR Remote Control mode

An IR remote control is included in the box with Vinci Bot. It can be used to change the speed and direction of the robot or adjust the volume, etc. Operate the robot on a smooth and flat playground.



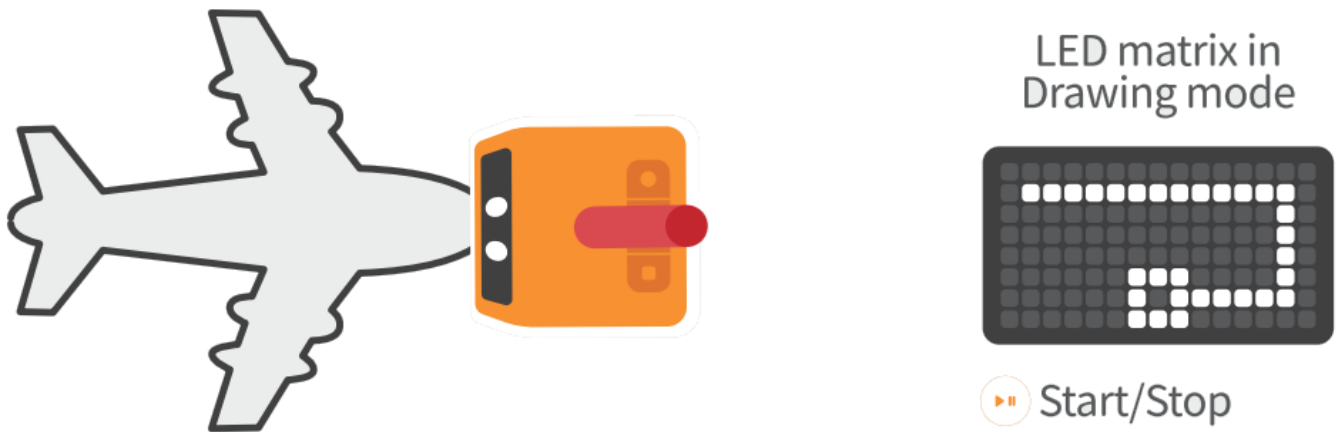
Line Following mode

In Line Following mode, Vinci Bot moves automatically along the black lines on the map.



Drawing mode

In Drawing mode, VinciBot draws a picture automatically.

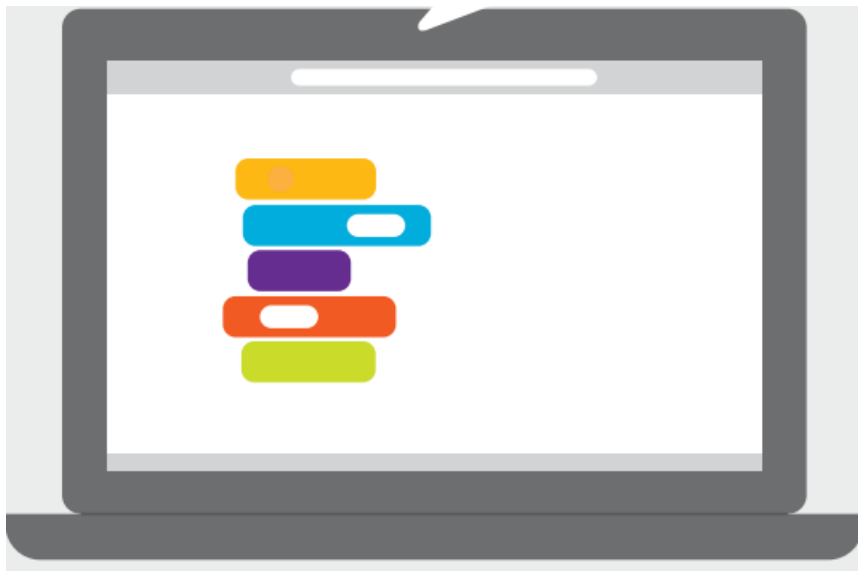


Press **1,2,3** on the remote control to select a preset program. Press the robot starts drawing.

Connect VinectBot

Vinci Bot supports block-based coding and text-based coding, allowing children to easily learn coding from entry-level to advanced.

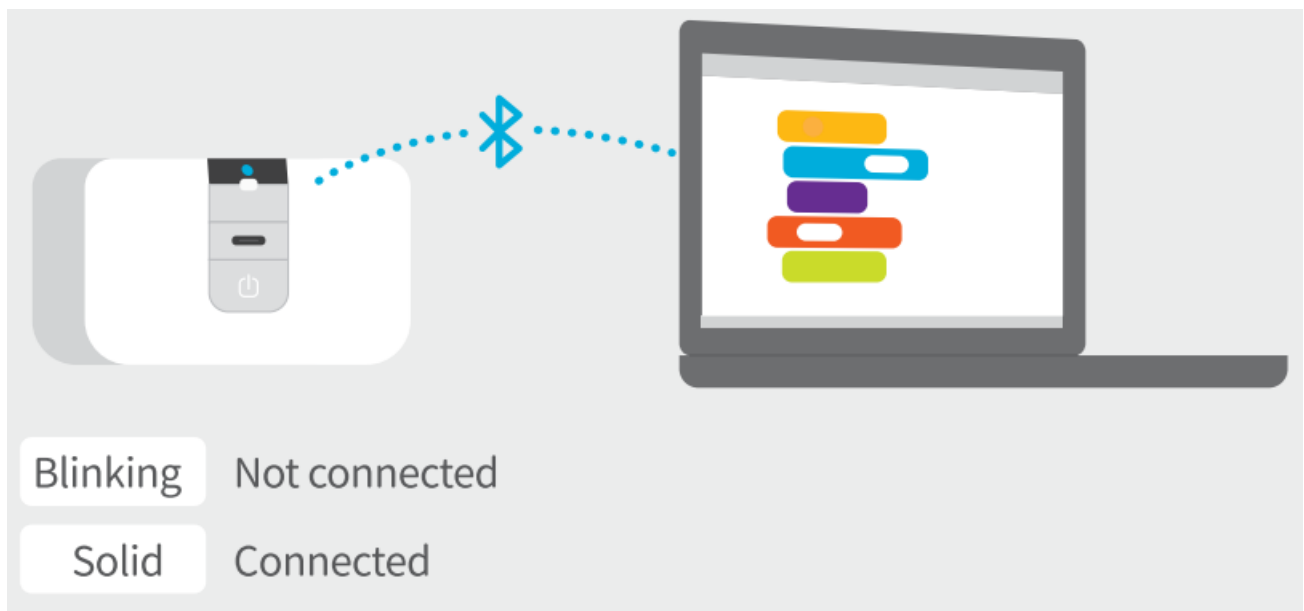
<https://coding.matatalab.com>



Method 1 Connect Vinci Bot to a computer via the USB-C cable

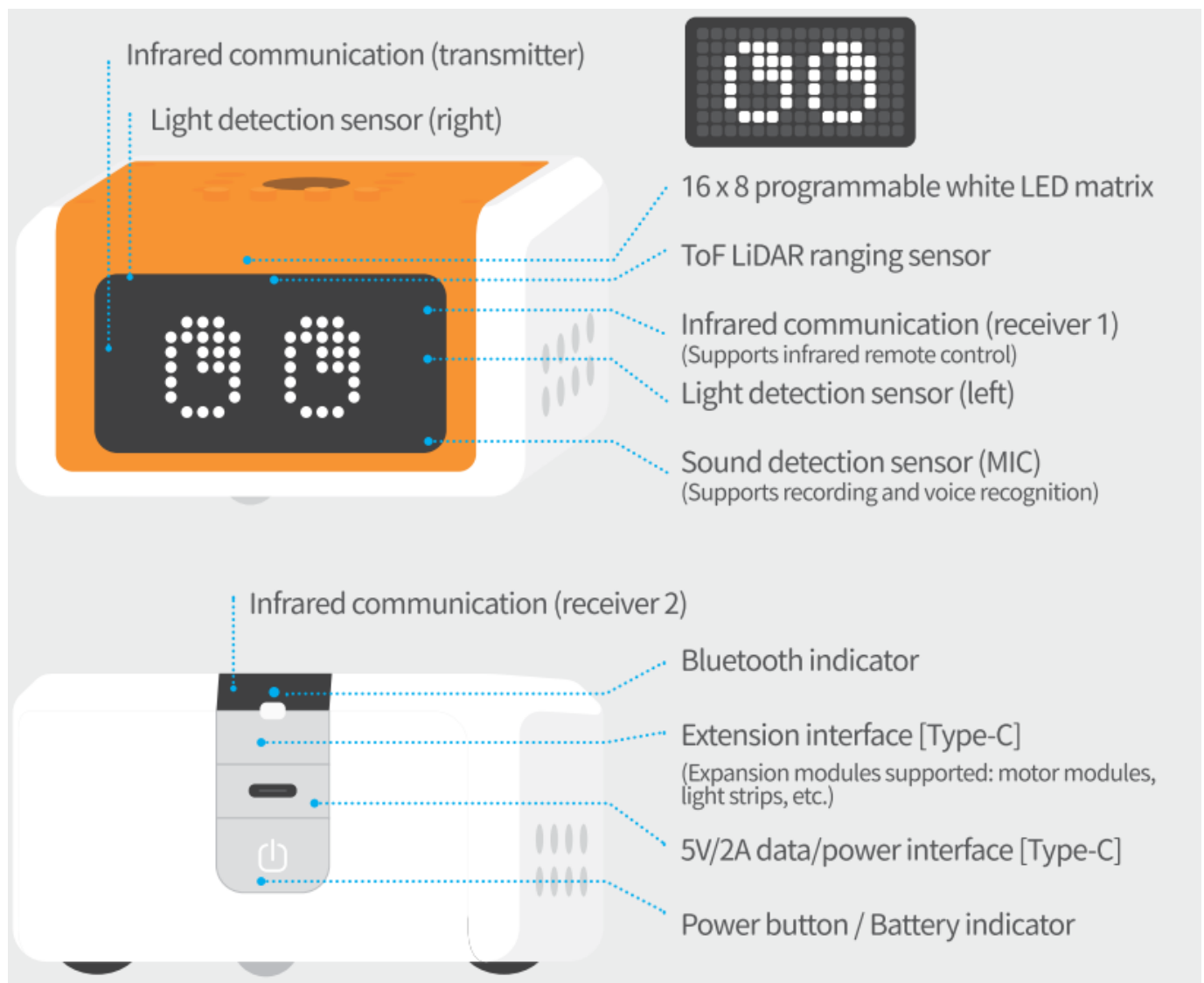


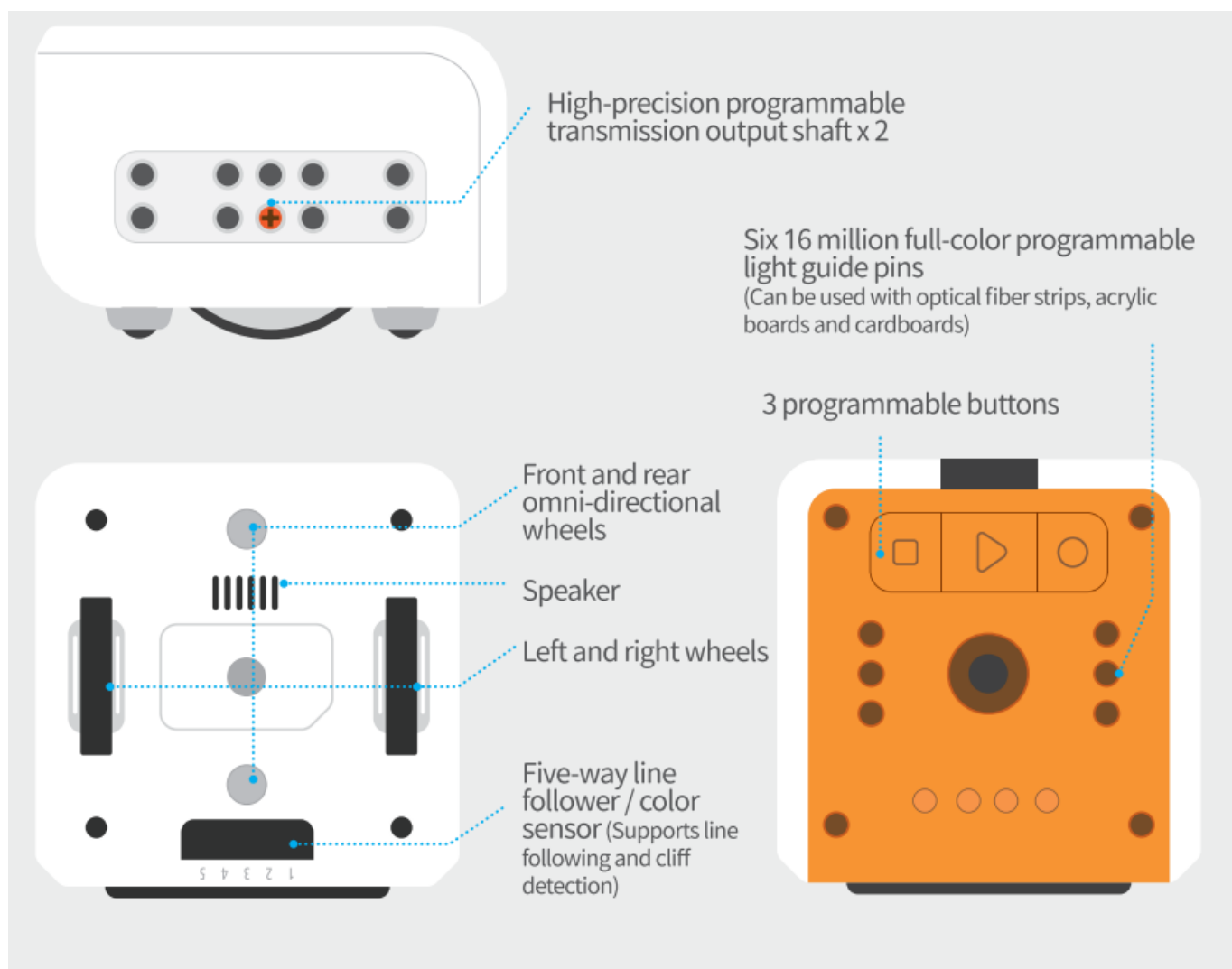
Method 2 Connect Vinci Bot to a computer via Bluetooth



For details, go to <https://coding.matatalab.com> and click Help

Product Overview





Specification

Bluetooth range	Within 10m (in an open area)
Recommended age group	Sand above
Working time	≥ 4 h
Body shell	Environmentally-friendly ABS material, in line with ROHS
Dimensions	90x88x59mm
Input voltage and current	5V, 2A
Battery capacity	1500mAh
Operating temperature	0 to 40°C
Storage temperature	-10 to +55°C
Charging time [via 5V/2A adapter]	2h

Safety Instructions

- This product is not intended for use by children under the age of three.
- The power adapter (not included in the box) is not a toy. Keep it out of the reach of children.
- This product shall only be used with a transformer for toys
- Disconnect the product from the power supply before cleaning. Clean the product with a dry, fiber-free cloth.
- Children should play with the product under the guidance of an adult.
- 'Falling even from a low height can damage the product.
- Never rebuild and/or modify this product to avoid malfunctioning.
- Do not use or charge the product in temperatures outside its operating range.
- If this product is not to be used for a long period of time, fully charge it before storage and recharge it at least once every three months.
- Use only a recommended power adapter (5V/2A) to charge the product.
- Regularly check whether the cable, plug, shell or other components are damaged. If damaged, stop using it immediately.

Caution

Risk of explosion if batteries are replaced by an incorrect type. Return the used batteries according to the relevant statutory regulations.

Support

Visit www.matatalab.com for more information, such as operating instructions, troubleshooting and software updates, etc.

This device complies with part 15 of the FCC Rules. Operation is subject to the following two conditions:

1. This device may not cause harmful interference, and
2. this device must accept any interference received, including interference that may cause undesired operation.

Caution: Any changes or modifications to this device not explicitly approved by the manufacturer could void your authority to operate this equipment. Note: This equipment has been tested and found to comply with the limits for Class B digital devices, pursuant to part 15 of the FCC Rules. These limits are designed to provide reasonable protection against harmful interference in a residential installation. This equipment generates, uses and can radiate radio frequency energy and, if not installed and used in accordance with the instructions, may cause harmful interference to radio communications. However, there is no guarantee that interference will not occur in a particular installation. If this equipment does cause harmful interference to radio or television reception, which can be determined by turning the equipment off and on, the user is encouraged to try to correct the interference by one or more of the following measures:

- Reorient or relocate the receiving antenna.
- Increase the separation between the equipment and receiver.
- Connect the equipment to an outlet on a circuit different from that to which the receiver is connected.
- Consult the dealer or an experienced radio/TV technician for help.

FCC RF Exposure Information and Statement

The SAR limit of USA (FCC) is 1.6 W/kg averaging over one gram of tissue. Device types VinciBot coding robot set (FCC ID: 2APCM-MTB2207) has also been tested against this SAR limit. The highest SAR value reported under this standard during product certification for use at the body is 0.155W/kg. This device was tested for typical body-worn operations with the back of the handset kept 0mm from the body.

To maintain compliance with FCC RF exposure requirements, use accessories that maintain a 0mm separation distance between the user's body and the back of the handset. The use of belt clips, holsters, and similar accessories should not contain metallic components in their assembly. The use of accessories that do not satisfy these requirements may not comply with FCC RF exposure requirements and should be avoided.

Hereby, MATATALAB CO., LTD. declares that the radio equipment type VinciBot is in compliance with Directive 2014/53/EU.

The full text of the EU declaration of conformity is available at the following internet address: www.matatalab.com/doc



This device complies with the essential requirements and other relevant provisions of the Low Voltage Directive 2014/35/EU, the EMC Directive 2014/30/EU, the Eco-Design Directive 2009/125/EC and the ROHS Directive 2011/65/EU.



WASTE ELECTRICAL AND ELECTRONIC EQUIPMENT(WEEE)

The WEEE marking indicates that this product should not be disposed of with regular household waste at the end of its life cycle. This regulation is created to prevent any possible harm to the environment or human health. This product is developed and manufactured with high-quality materials and components which can be recycled and/or reused. Please dispose of this product at your local collection point or recycling center for electrical and electronic waste. This will make sure that it will be recycled in an environmentally friendly manner, and will help to protect the environment in which we all live.

Warranty

- Warranty period: One (1) Year Limited
- The following circumstances will void the free warranty:
- Not able to provide this warranty certificate and valid invoice.
- This warranty is unilaterally modified or incompatible with the product.
- Natural consumption/wear and aging of consumable parts.
- Damage caused by lightning or other electrical system problems.
- Damage caused by improper use, such as external force, damage, etc.
- Damage caused by force majeure factors such as accidents/ disasters.
- Self-dismantled/ reassembled/ repaired products.
- The product exceeds the warranty period.
- Abuse or misuse, including but not solely limited to the failure to use this product beyond the user manual.

Caution-electric Toy

Not Recommended For Children Under 3 Years Of Ages. As With All Electric Products, Precautions Should Be Observed During Handling And Use To Prevent Electric Shock. Conforms To The Requirements Of Astm Standard Consumer Safety Specifications On Toy Safety F963.

WARNING

CHOKING HAZARD-small parts.

Not for children under 3 years.

This user guide contains important information, please keep it!



Documents / Resources

	<p>matatalab VinciBot Coding Robot Set [pdf] User Guide MTB2207, 2APCM-MTB2207, 2APCMMTB2207, VinciBot Coding Robot Set, VinciBot, Coding Robot Set</p>
---	---

Manuals+.