

**matata
studio**
MX2-A Digital
Microscope



matata studio MX2-A Digital Microscope User Guide

[Home](#) » [matata studio](#) » matata studio MX2-A Digital Microscope User Guide 

Contents

- [1 matata studio MX2-A Digital Microscope](#)
- [2 Product Description](#)
- [3 Microscope components and use](#)
- [4 Using the microscope](#)
- [5 Steps for use](#)
- [6 Adjust microscope magnification](#)
- [7 Using the app](#)
- [8 Specifications](#)
- [9 PARTS LIST](#)
- [10 Safety instructions](#)
- [11 WARRANTY](#)
- [12 Documents / Resources](#)
 - [12.1 References](#)
- [13 Related Posts](#)

**matata
studio**

matata studio MX2-A Digital Microscope



Product Description

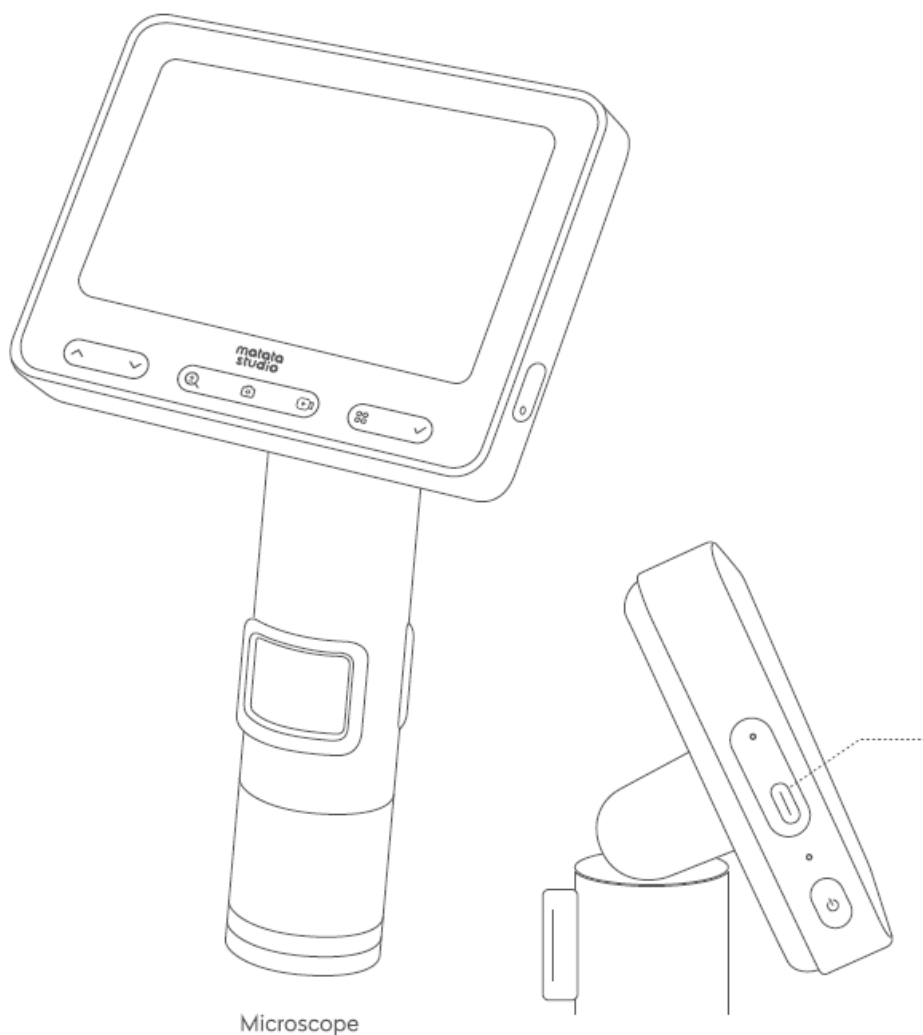
Thank you for choosing the MatataStudio Digital Microscope MX2-A. This high-performance, multifunctional device seamlessly integrates optical microscopy with digital imaging, delivering high-definition images and videos for precise observation and recording.

Important Information

- Read instructions carefully and use the microscope properly.
- Protect the objective.
- Avoid excessive force when docking.
- Place specimens directly under the objective center for a clear view.
- This product is compatible with the MX Stand. When used together, it can observe flowers, insects, and other physical samples, as well as slide specimens.

Microscope components and use

Microscope component



Microscope

Usage environment



Use in an environment
of -10°C~45°C



Please do not allow
water, beverages or
corrosive liquids get the
microscope wet



Please do not allow the
microscope to come close to
heat sources, open flames, or
flammable / combustible
liquids or gases



Please do not allow
dust to enter the lens or
interior of the
microscope



Please do not allow the
microscope to be struck
or violently shaken

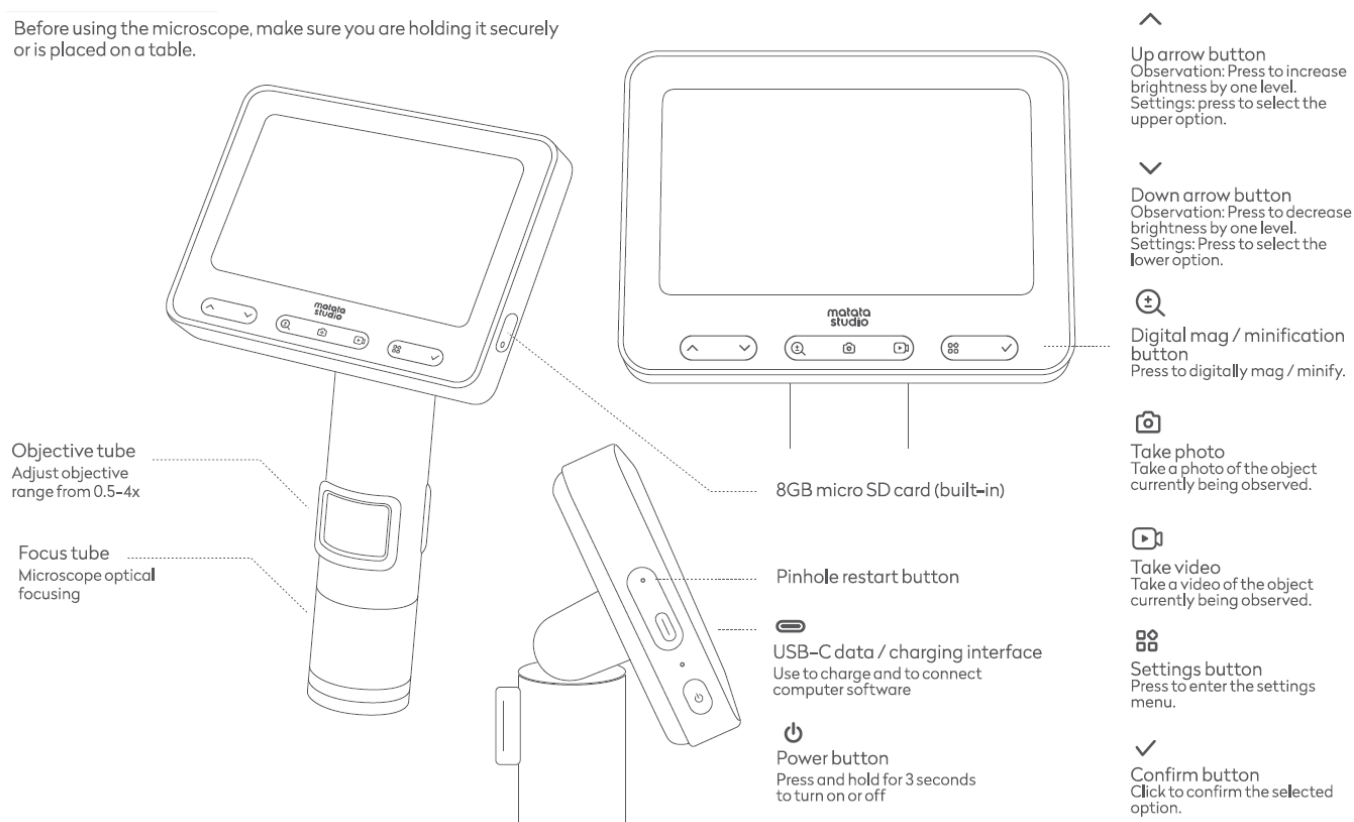
In low temperatures, battery capacity may decline. In the event of malfunction, please contact customer service for repairs. Disassembling the microscope on one's own violates the warranty and may lead to irreparable damage.

Charging

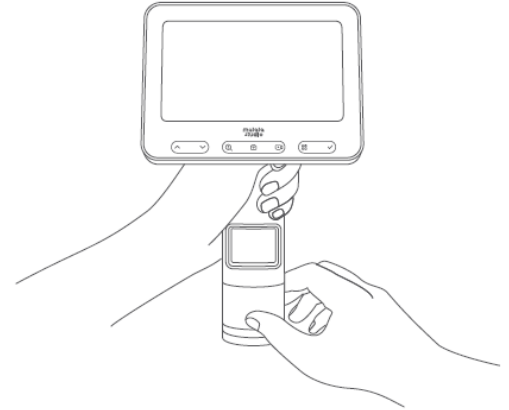
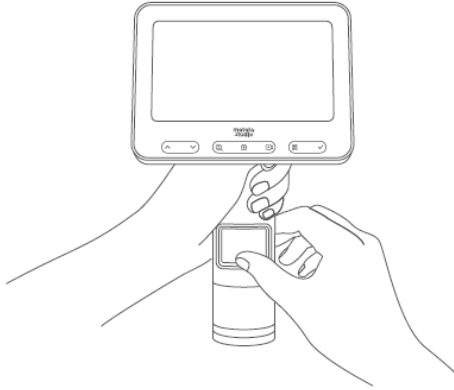
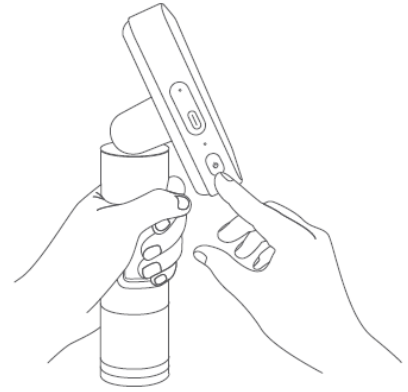
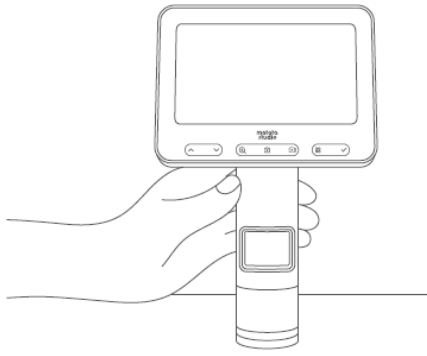
- When powered off, the red light stays on while charging.
- When in use, both red and blue lights are on while charging.

Using the microscope

Before using the microscope, make sure you are holding it securely or is placed on a table.

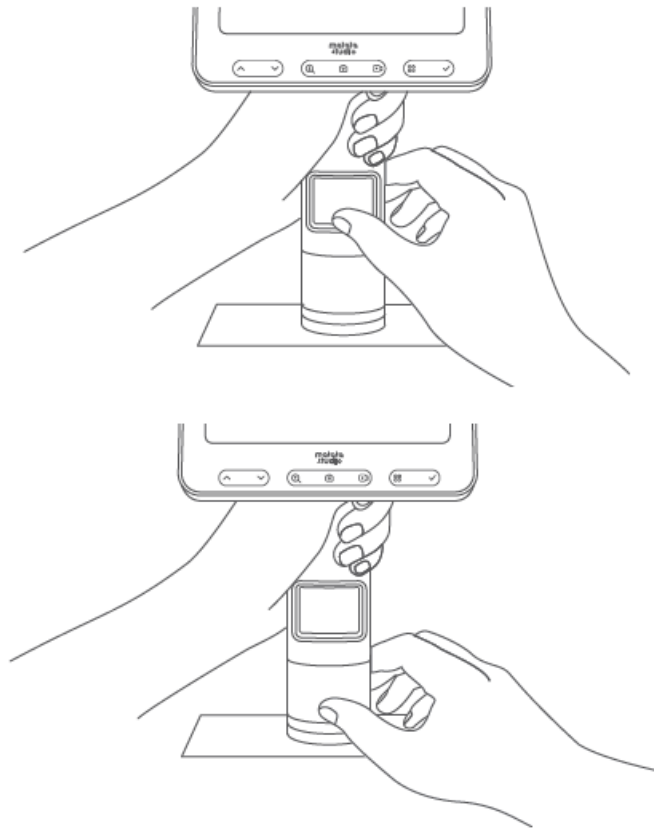


Steps for use



1. Hold the top of the microscope tube in one hand.
2. Turn on the microscope.
3. Point the microscope at the object you wish to observe.
4. Turn the objective tube and focus tube with your other hand, looking at the display on the screen. Slowly adjust to the best magnification.

Adjust microscope magnification



- Turn the objective tube counterclockwise to magnify or objective tube clockwise to minify.
- Turn the focus tube counterclockwise and clockwise to focus.

Using the app



Scan the QR code or follow the link to download the app
(<https://www.matatastudio.com/software.html>)



Android / iOS devices

- Open your device and turn on WiF In the settings turn on WiFi.



- Connect the microscope to the Android / iOS device Click the Connect WiFi button on the APP to enter the WiFi settings page, select the WiFi corresponding to the microscope WiFi signal name (MX2-XXXXXXX) and connect. Return to the main interface in the app and wait for the “Start Observation” text to be displayed.



Note: If a connection notification appears, tap “maintain connection” (Android) or tap “OK”; When connecting the app to the microscope, please allow location permission on your phone / tablet.

- Start observation After clicking to start observation, you will enter the real-time image preview page, where you can control the microscope to take photos, record videos.



PC

• Connect data cable

Plug one end of the microscope USB data cable into the computer USB port, and the other end into the microscope USB-C interface. At this time, the microscope will display 3 options (memory, camera, charging). Select the “camera” option and confirm.



• Using on a PC

After connecting to the computer, it will take 1-3 seconds to automatically install the driver, then open MatataXplore, and you can view the images in real time on the computer and edit the images.

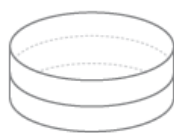
Specifications

Product name	Digital microscope MX2-A
Product model	MX2-A
Sensor resolution	1980(H)x1080(W)
Pixel specifications	2MP
Objective	0.5-4x
Magnification range	9-72x
Screen size	4.3" HD LCD screen

PARTS LIST



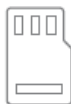
Digital Microscope MX2-A



Observation chamber



USB-C data cable



8GB micro SD card (built-in)



User guide



Exploration manual

Safety instructions

- This product is not intended for use by children under the age of three.
- The power adapter (not included in the box) is not a toy. Keep it out of the reach of children.
- This product shall only be used with a transformer for toys
- Disconnect the product from the power supply before cleaning. Clean the product with a dry, fiber-free cloth.
- Children should play the product under the guidance of an adult.
- Falling even from a low height can damage the product.
- Never rebuild and/or modify this product to avoid malfunctioning.
- Do not use or charge the product in temperatures outside its operating range.
- If this product is not to be used for a long period of time, fully charge it before storage and recharge it at least once every three months.
- Use only a recommended power adapter (5V/2A) to charge the product. *Regularly check whether the cable, plug, shell or other components are damaged. If damaged, stop using immediately.

CAUTION Risk of explosion if batteries are replaced by an incorrect type. Return the used batteries according to the relevant statutory regulations.

WARRANTY

Warranty terms

*Product warranty period is 1 year

***The following situations are not covered by free warranty:**

- **a.** Unable to present this warranty certificate and valid invoice
- **b.** This warranty certificate contains traces of alteration or is inconsistent with the product
- **C.** Natural consumption/wear and aging of consumable materials
- **d.** Damage caused by lightning strikes or other electrical system reasons
- **e.** Damage caused by improper use by users, such as liquid injection/external force damage, etc.
- **f.** Damage caused by force majeure factors such as accidents/disasters,
- **h.** Damage caused by excessive use of the product or not using/maintaining/storing the product in accordance

with the product instructions



This device complies with the essential requirements and other relevant provisions of the Low Voltage Directive 2014/35/EU, the EMC Directive 2014/30/EU, the Eco-Design Directive 2009/125/EC and the ROHS Directive 2011/65/EU.




WASTE ELECTRICAL AND ELECTRONIC EQUIPMENT(WEEE)

The WEEE marking indicates that this product should not be disposed with regular household waste at the end of its life cycle. This regulation is created to prevent any possible harm to the environment or human health. This product is developed and manufactured with high quality materials and components which can be recycled and/or reused. Please dispose this product at your local collection point or recycling centre for electrical and electronic waste. This will make sure that it will be recycled on an environmentally friendly manner, and will help to protect the environment in which we all live.



This user guide contains important information, please keep it!

Documents / Resources

	matata studio MX2-A Digital Microscope [pdf] User Guide MX2-A, MX2-A Digital Microscope, Digital Microscope, Microscope
---	--

References

- [User Manual](#)

[Manuals+](#), [Privacy Policy](#)

This website is an independent publication and is neither affiliated with nor endorsed by any of the trademark owners. The "Bluetooth®" word mark and logos are registered trademarks owned by Bluetooth SIG, Inc. The "Wi-Fi®" word mark and logos are registered trademarks owned by the Wi-Fi Alliance. Any use of these marks on this website does not imply any affiliation with or endorsement.