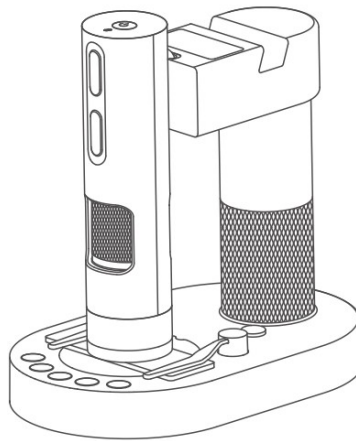


# matata studio

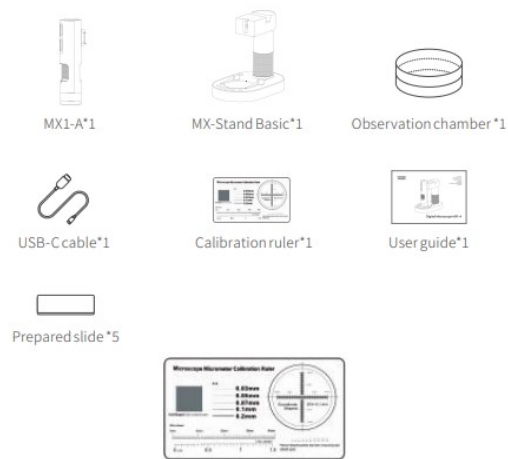
## MX1-A Digital Microscope User Guide



### Contents [ [hide](#) ]

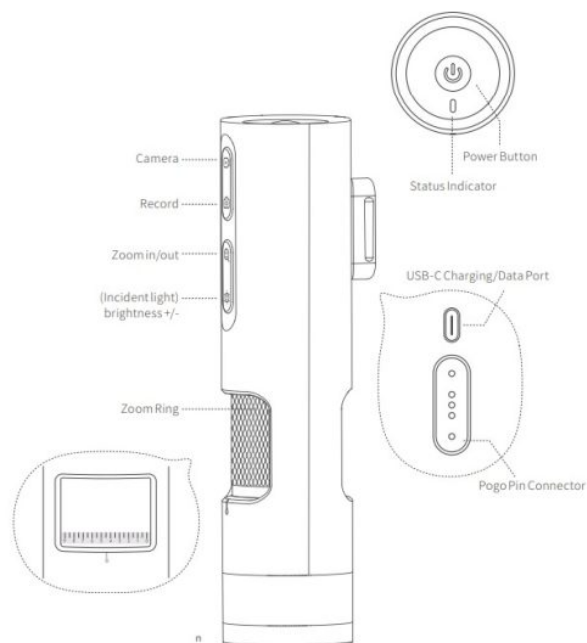
- [1 Packing List](#)
- [2 Product Overview](#)
- [3 Quick Start](#)
- [4 Basic Operations](#)
- [5 Specifications](#)
- [6 Precautions](#)
- [7 Documents / Resources](#)
  - [7.1 References](#)

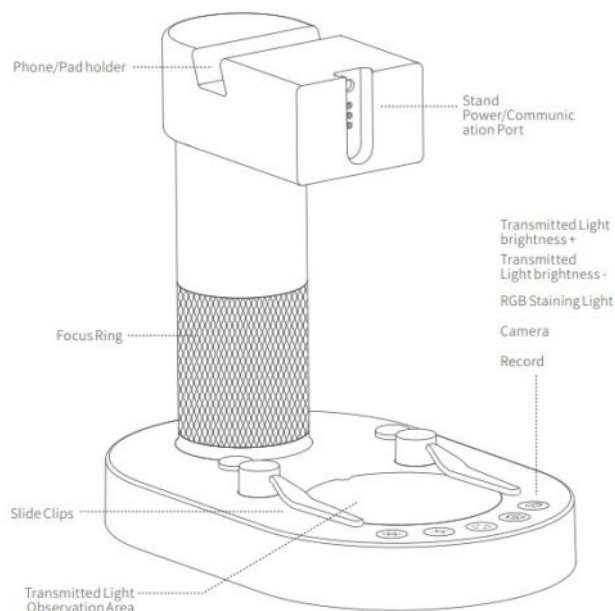
## Packing List



The calibration ruler is required for calibration via the Matata Xplore app.  
Software instructions are available in the Matata Xplore app's Help Center.

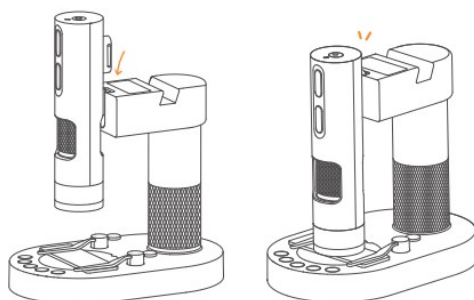
## Product Overview



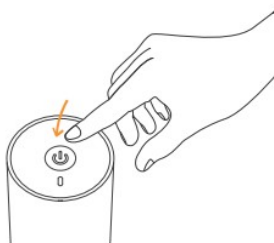


## Quick Start

### Set up & Power On/Off



1. Insert the main unit into the stand.



2. Press and hold the power button for 2 seconds until the blue light blinks.

### Device Connection

-Download and set up the Matata Xplore app



Scan the QR code or visit the link below to download the application.

(<https://www.matatastudio.com/software.html>)



- (Phones or pads)/Wi-Fi: Open the Matata Xplore APP to start a Wi-Fi search and connect to the Wi-Fi (Name: MX1-A\_XXXX).

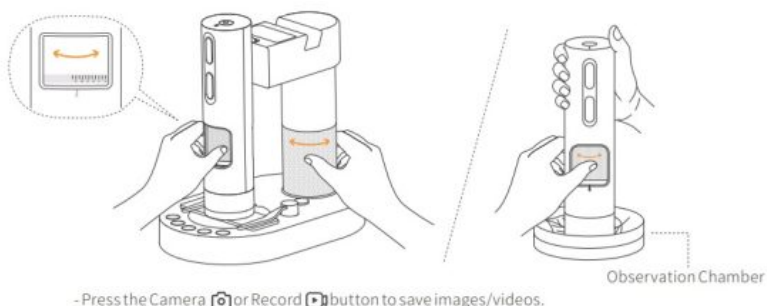


- Computer/USB: Install the software and connect to the computer using the USB-C cable for observation.



## Basic Operations

- Rotate the focus ring and zoom ring to adjust the clarity and magnification.



## Functions

- Power On/Off

Press and hold the power button for 2 seconds until the blue light indicator goes on and turns the device on.

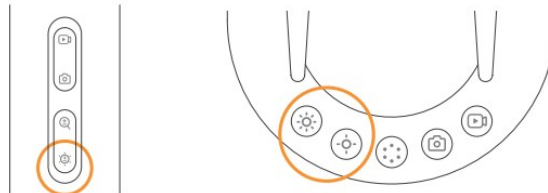
Press and hold the power button for 2 seconds until the blue light indicator goes off

and turns the device off.

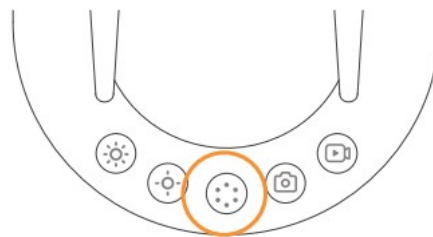
Disconnecting the USB connection with the computer will directly shut down the device.

- Incident and Transmitted Light Source Adjustment

Press the brightness +/--buttons on the main unit or stand to adjust the intensity of the incident and transmitted LED light sources.



– The transmitted light source supports RGB staining: Press the RGB staining light button to switch colors.



### **-Zoom In/Out**

Press the zoom in/zoom out buttons on the main unit to cycle through the digital magnification levels.

### **-Indicator Light Status**

Indicator Light Color	Status
Blue light flashing	Wi-Fi waiting to be connected
Blue light steady	Wi-Fi connected
Blue Eight lashing	Low battery alert
Red light steady	Charging state
Green light steady	Battery fully charged

**Note:** When the device is connected to the computer via USB, Wi-Fi will automatically disconnect. At this time, the blue light will flash, and the red light will stay on. The device will automatically shut down after disconnecting the USB connection with the computer.

### **-Charging**

Power connection: Use a USB-C cable for charging (input DC 5V/2A).

## **Specifications**

Product Model	MX1-A
Sensor Resolution	1280×720
Sensor Pixels	11VP
Objective Lens	0.5X-4X
Magnification Range (based on a 19-inch screen)	30X-480X

## **Precautions**

- This product is not suitable for children under 3 years old.
- The adapter used for charging this product (not included in the package) should not be used as a toy.
- The product should only be connected to one power adapter.
- When cleaning the surface of this product, use a clean cloth. If using a damp cloth, turn off the product and disconnect it from the external power supply.
- Children should use this product under the supervision of an adult.
- Do not place this product on the edge of a high surface to avoid falling and damage.
- Do not disassemble, repair, or modify this product yourself to avoid product malfunction.
- Do not use or charge this product in an environment outside the product's working temperature range. When storing this product for an extended period, fully charge it before storage and recharge it at least once every 3 months.
- Use the recommended adapter (5V/2A adapter) to charge this product.
- Regularly check the wires, plugs, casing, or other components for damage. If any damage is found, stop using the product until it is repaired.

## **Warnings!**

There is a risk of explosion if the battery type is not replaced correctly. Please dispose of used batteries per the instructions.

## **Warranty Terms**

The product warranty period is 1 year.

The following situations are not covered by the free warranty:

- a. Unable to present a warranty certificate and valid invoice;
- b. This warranty certificate has been altered or does not match the product;
- c. Natural consumption/abrasion and aging of consumable materials;
- d. Damage caused by lightning or other electrical system issues;
- e. Damage caused by improper use by the user, such as liquid ingress/external force damage, etc.;
- f. Damage caused by accidents/disasters or other force majeure factors;
- g. Products that have been disassembled/modified/repared by the user;
- h. Exceeding the warranty period, or damage not caused by following the product usage instructions for use/maintenance/storage.

## **After-Sales Service**

1-year warranty for non-manmade damage.

For any questions, please contact the customer service email:

[support@matatastudio.com](mailto:support@matatastudio.com)

This user guide contains important product information and should be retained.

This device complies with the essential requirements and other relevant provisions of the Low Voltage Directive 2014/35/EU, the EMC Directive 2014/30/EU, the Eco-Design Directive 2009/125/EC and the ROHS Directive 2011/65/EU.

## **WASTE ELECTRICAL AND ELECTRONIC EQUIPMENT (WEEE)**



The WEEE marking indicates that this product should not be disposed with regular household waste at the end of its life cycle. This regulation is created to prevent any possible harm to the environment or human health.

This product is developed and manufactured with high quality materials and components which can be recycled and/or reused. Please dispose this product at your local collection point or recycling centre for electrical and electronic waste. This will make sure that it will be recycled on an environmentally friendly manner, and will help to protect the environment in which we all live.

This user guide contains important information, please keep it!

### **FCC Caution**

This device complies with part 15 of the FCC Rules. Operation is subject to the following two conditions: (1) This device may not cause harmful interference, and (2) this device must accept any interference received, including interference that may cause undesired operation.

Any Changes or modifications not expressly approved by the party responsible for compliance could void the user's authority to operate the equipment.

Note: This equipment has been tested and found to comply with the limits for a Class B digital device, pursuant to part 15 of the FCC Rules. These limits are designed to provide reasonable protection against harmful interference in a residential installation. This equipment generates uses and can radiate radio frequency energy and, if not installed and used in accordance with the instructions, may cause harmful interference to radio communications. However, there is no guarantee that interference will not occur in a particular installation. If this equipment does cause harmful interference to radio or television reception, which can be determined by turning the equipment off and on, the user is encouraged to try to correct the interference by one or more of the following measures:

- Reorient or relocate the receiving antenna.
- Increase the separation between the equipment and receiver.
- Connect the equipment into an outlet on a circuit different from that to which the receiver is connected.
- Consult the dealer or an experienced radio/TV technician for help.

The device has been evaluated to meet general RF exposure requirement. The device can be used in portable exposure condition without restriction.



Designed by

MATATALAB CO., LTD. in China

## **Documents / Resources**



[matata studio MX1-A Digital Microscope \[pdf\]](#) User Guide  
2APCM-MX1A000, 2APCMMX1A000, mx1a000, MX1-A Digital  
Microscope, MX1-A, Digital Microscope, Microscope

## References

- [User Manual](#)

matata studio

2APCM-MX1A000, 2APCMMX1A000, Digital Microscope, matata studio, Microscope, MX1-A, MX1-A Digital Microscope, mx1a000

## Leave a comment

Your email address will not be published. Required fields are marked \*

Comment \*

Name

Email

Website

☐ Save my name, email, and website in this browser for the next time I comment.

**Post Comment**

## Search:

e.g. whirlpool wrf535swhz

Search

[Manuals+](#) | [Upload](#) | [Deep Search](#) | [Privacy Policy](#) | [@manuals.plus](#) | [YouTube](#)

This website is an independent publication and is neither affiliated with nor endorsed by any of the trademark owners. The "Bluetooth®" word mark and logos are registered trademarks owned by Bluetooth SIG, Inc. The "Wi-Fi®" word mark and logos are registered trademarks owned by the Wi-Fi Alliance. Any use of these marks on this website does not imply any affiliation with or endorsement.