

Contents [[hide](#)]

- [1 Masterframe 600 ATX CASE Designed For Modular Builds](#)
- [2 Specifications](#)
- [3 Installation](#)
- [4 FAQs](#)
- [5 Documents / Resources](#)
 - [5.1 References](#)



Masterframe 600 ATX CASE Designed For Modular Builds



Cooler Master MasterFrame600 – Introduction

The MasterFrame600 is a premium *open-frame mid-tower* ATX case designed for high-performance, modular PC builds. Part of Cooler Master's FreeForm2.0 platform, it features a strong yet lightweight aluminum exo-structure, interchangeable magnetic panels, and expansive cooling support—perfect for gamers, creators, and PC

enthusiasts.

Specifications

- **Materials:** Aluminum/SGCC steel frame, tempered glass & metal magnetic side panels
- **Internal Layout:**
 - Supports Mini-ITX to E-ATX motherboards
 - GPU clearance up to 485mm, CPU cooler height up to 190mm, PSU length up to 235mm
 - Drive bays: 2×3.5" combo and 3×2.5" dedicated
- **Cooling & Radiators:**
 - Fan mounts: up to 11 fans (front, top, rear, side)
 - Radiator support: front/top up to 420mm, side up to 420mm, rear 120mm
- **Front I/O:** 2× USB3.2 Gen1 Type-A, 1× USB3.2 Gen2×2 Type-C, and 3.5mm audio jack

Pre-Installed Fans:

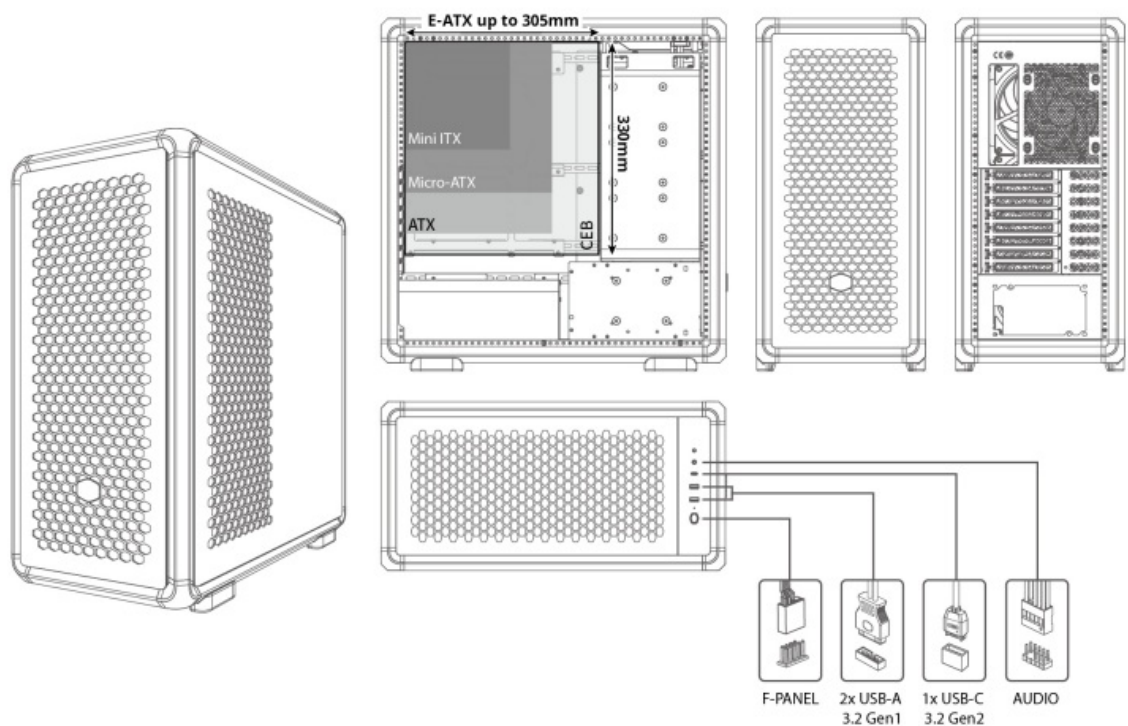
- Black version: 3× 140mm Mobius + 1× 120mm rear
- Silver version: ARGB SickleFlow equivalents
- **Dimensions:** 531 × 261 × 544mm (incl. protrusions), ~73.6L
- **Weight & Warranty:** Lightweight aluminum; 1-year limited warranty (2 years per retailer)

Safety & Usage Tips

- **Panel handling:** Magnetic tempered glass panels are easy to remove—careful handling prevents scratches or cracks.
- **Component support:** Use the included GPU support bracket to prevent heavy GPU sag over time.
- **Thermal optimization:** Maintain dust filters on all intake panels and ensure optimal airflow—avoid stacking or blocking vents.
- **Tool-free modularity:** External frame and internal rails allow for easy reconfiguration. Always power down before changing layouts.

Installation

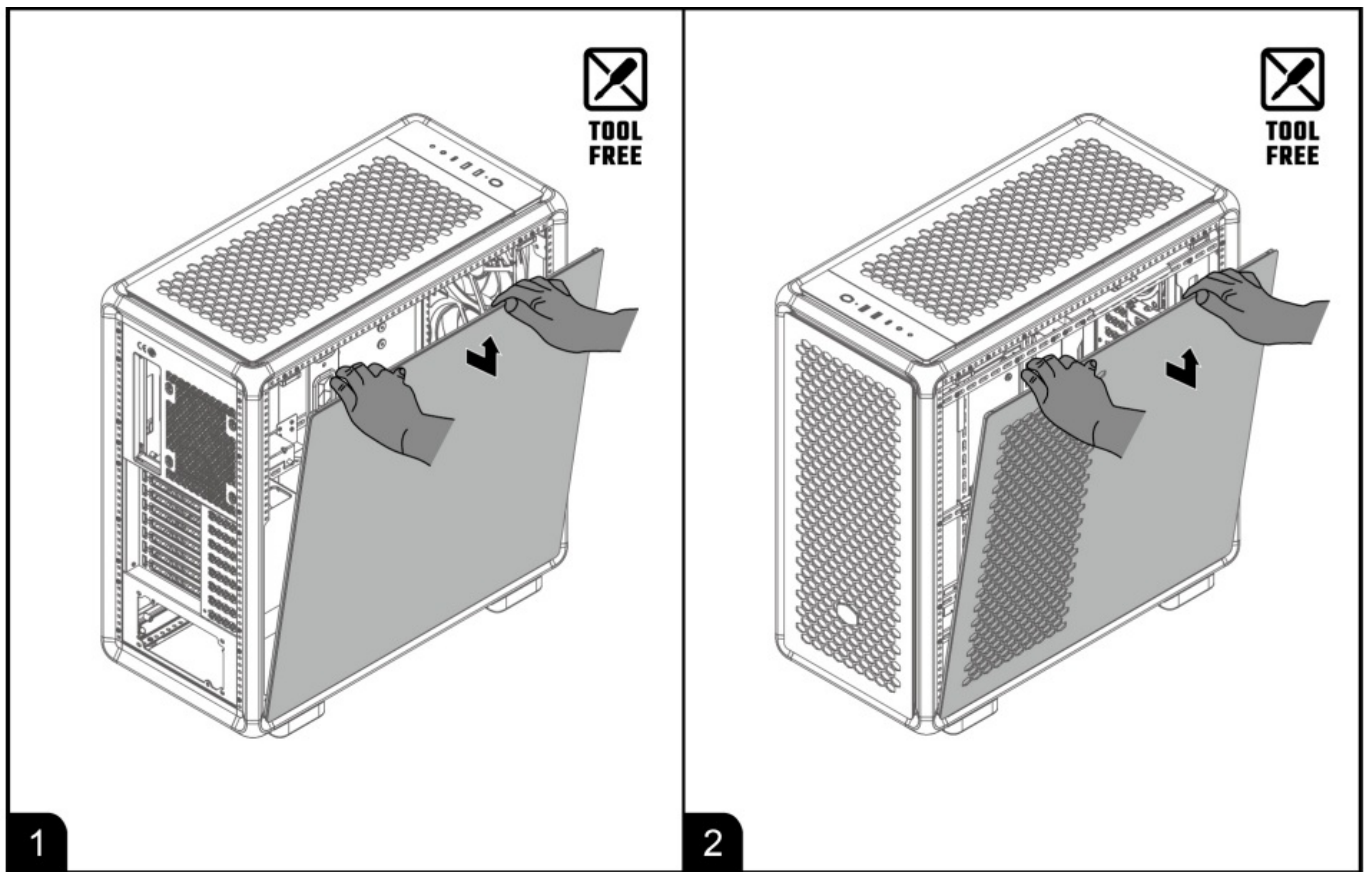
MASTERFRAME 600



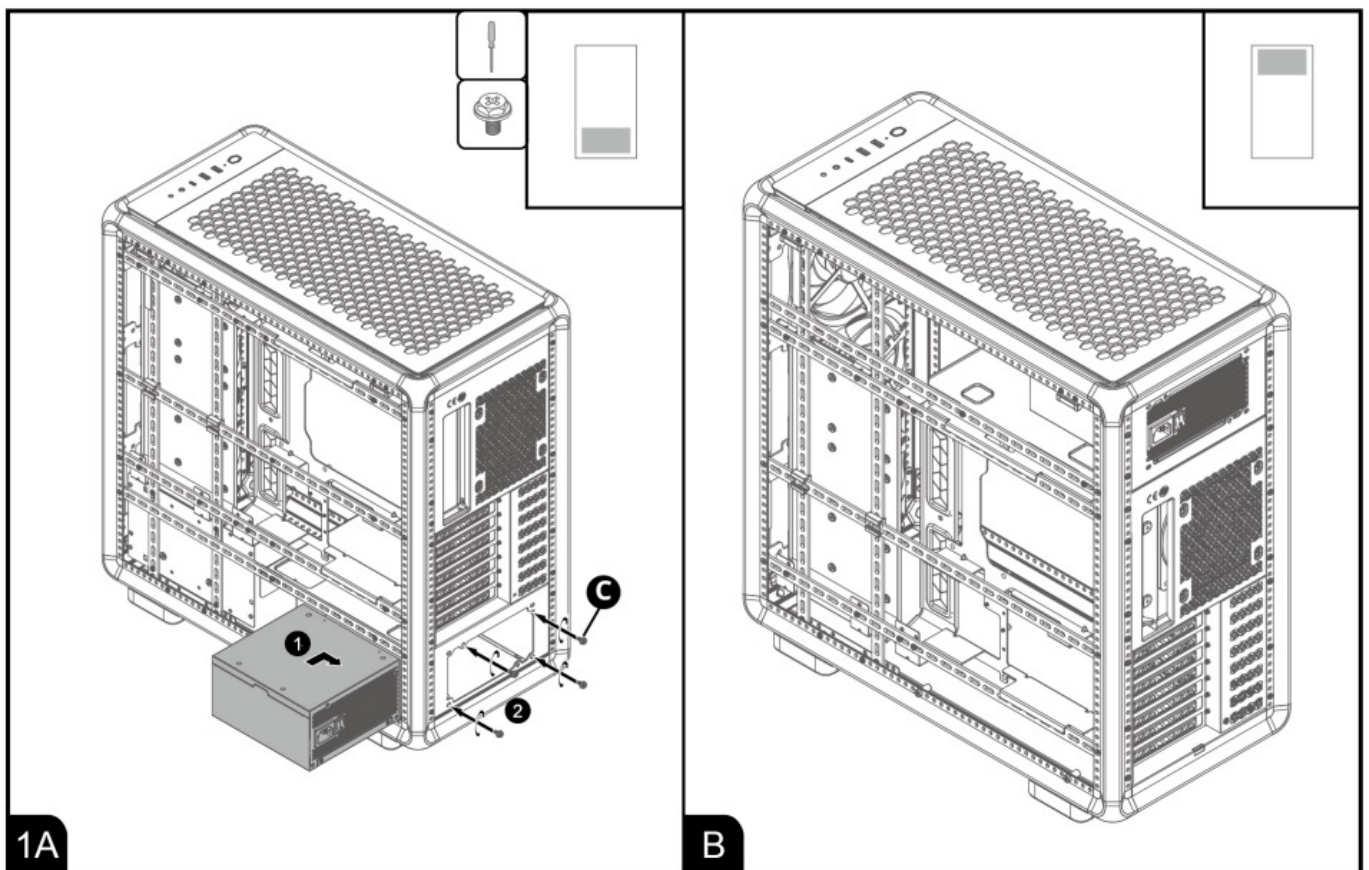
ACCESSORY BOX

	Figure	Name	Q'ty	Used for
A		Stand-off socket tool	1	Motherboard stand-off installation
B		Cable Tie	10	Cable management
C		#6-32*6mm screw	13	Motherboard & other
D		Stand off	3	Locking Motherboard
E		SSD Mounting pin	20	Installing SSD toollessly
F		SSD rubber	4	Installing SSD
G		#6-32*5mm screw	2	Lock GPU Support
H		M4*6mm screw	8	Lock Multi-functional Bar
I		#6-32*6mm screw	22	Installing PCI Support/HDD
J		M3*6mm screw	16	Installing SSD
K		Multi-functional Bar	2	Installing 120 140 180 200 fan/SSD/HDD
L		GPU Support	1	Support GPU
M		PCI Support	1	Case Appearance When Power is installed on the top

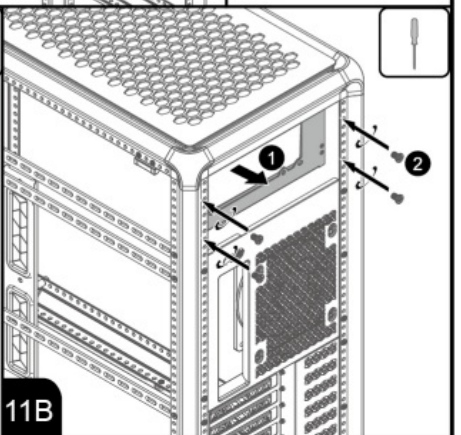
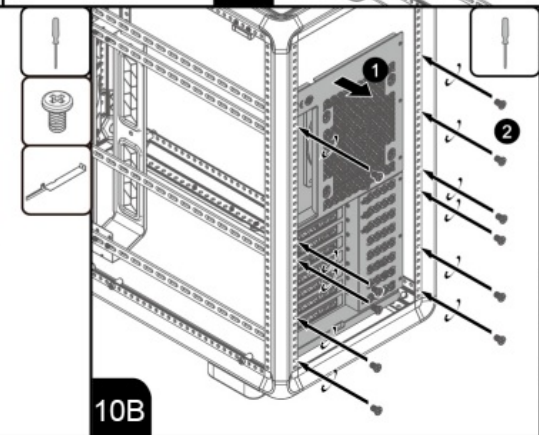
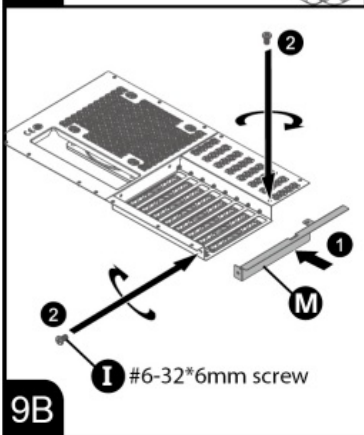
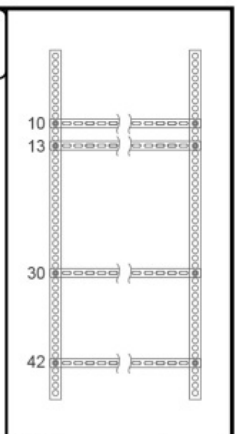
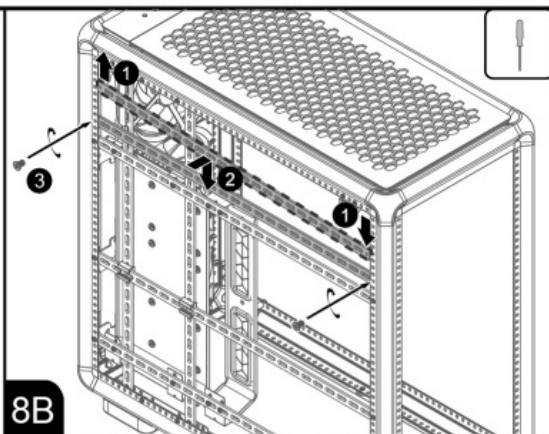
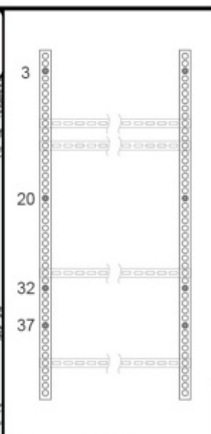
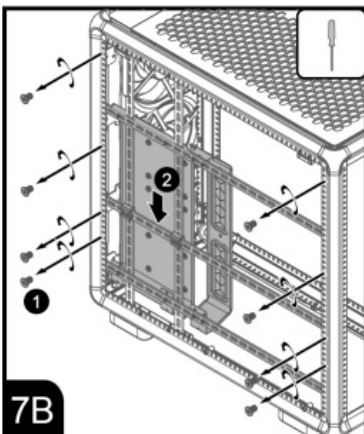
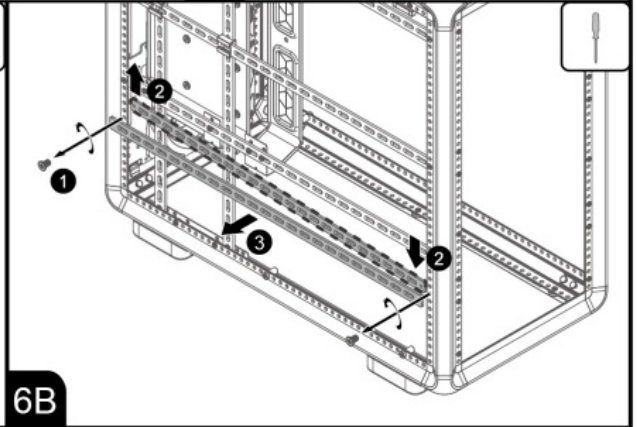
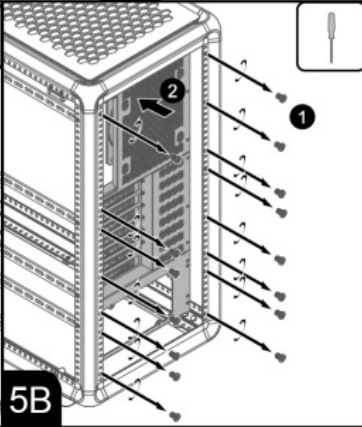
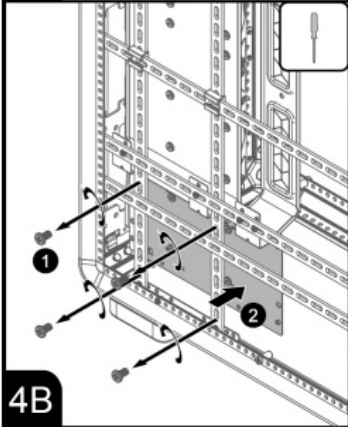
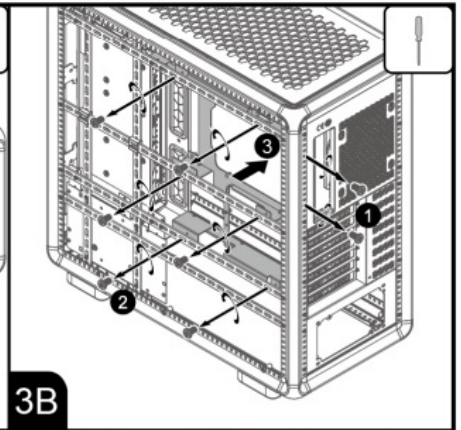
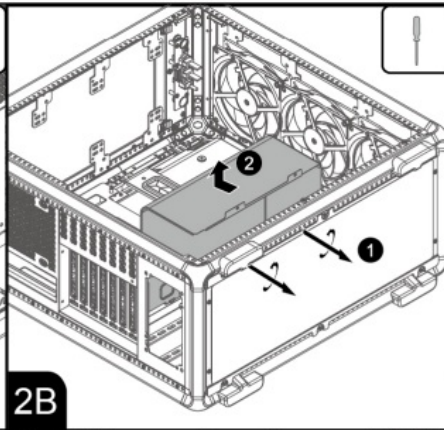
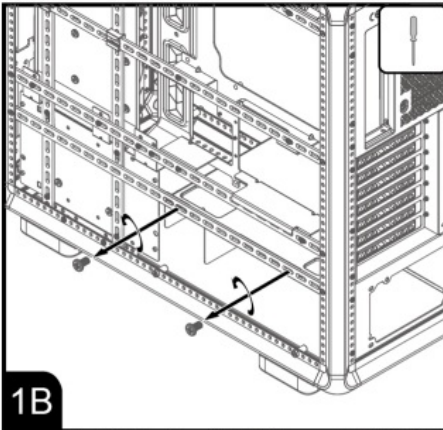
REMOVING PANELS

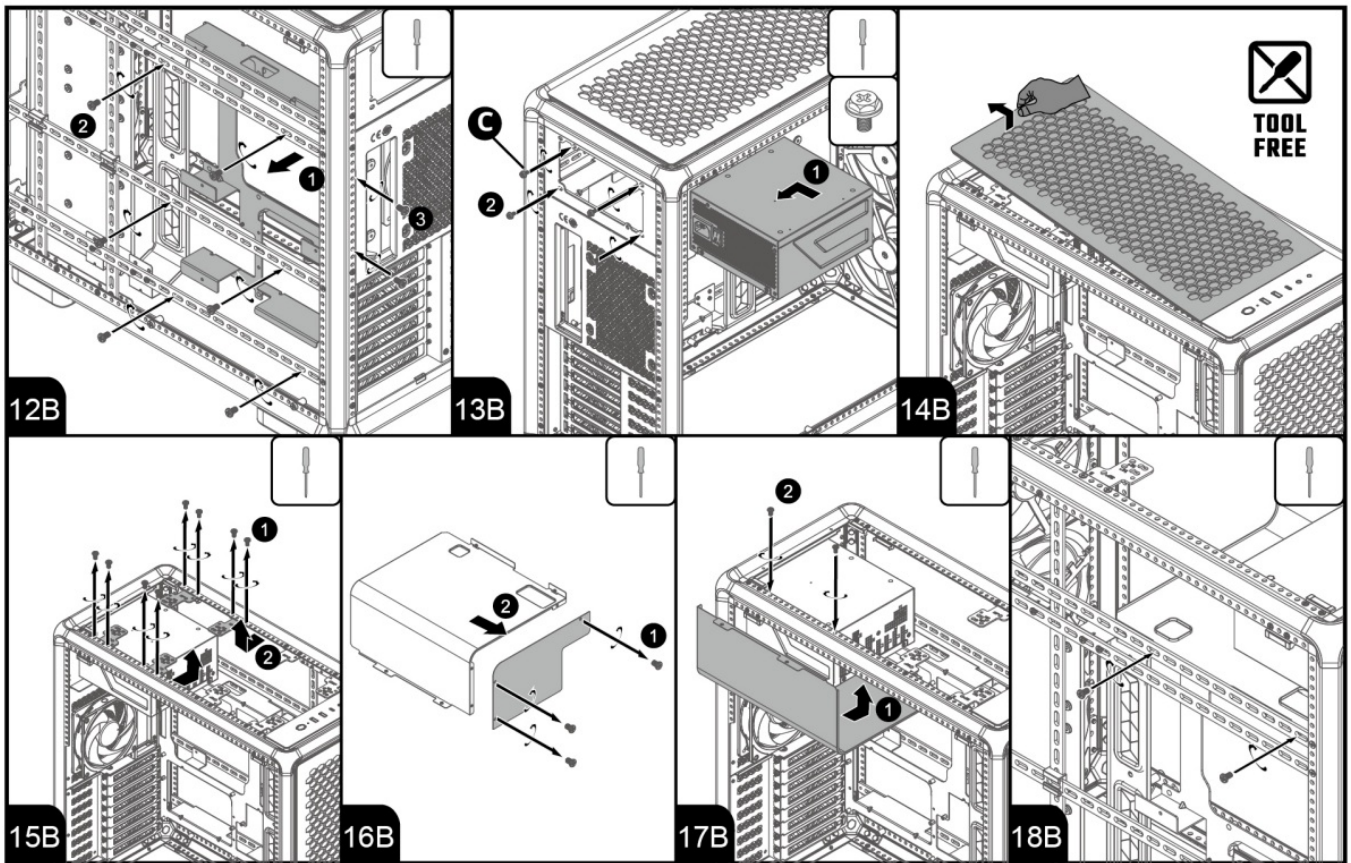


PSU INSTALLATION

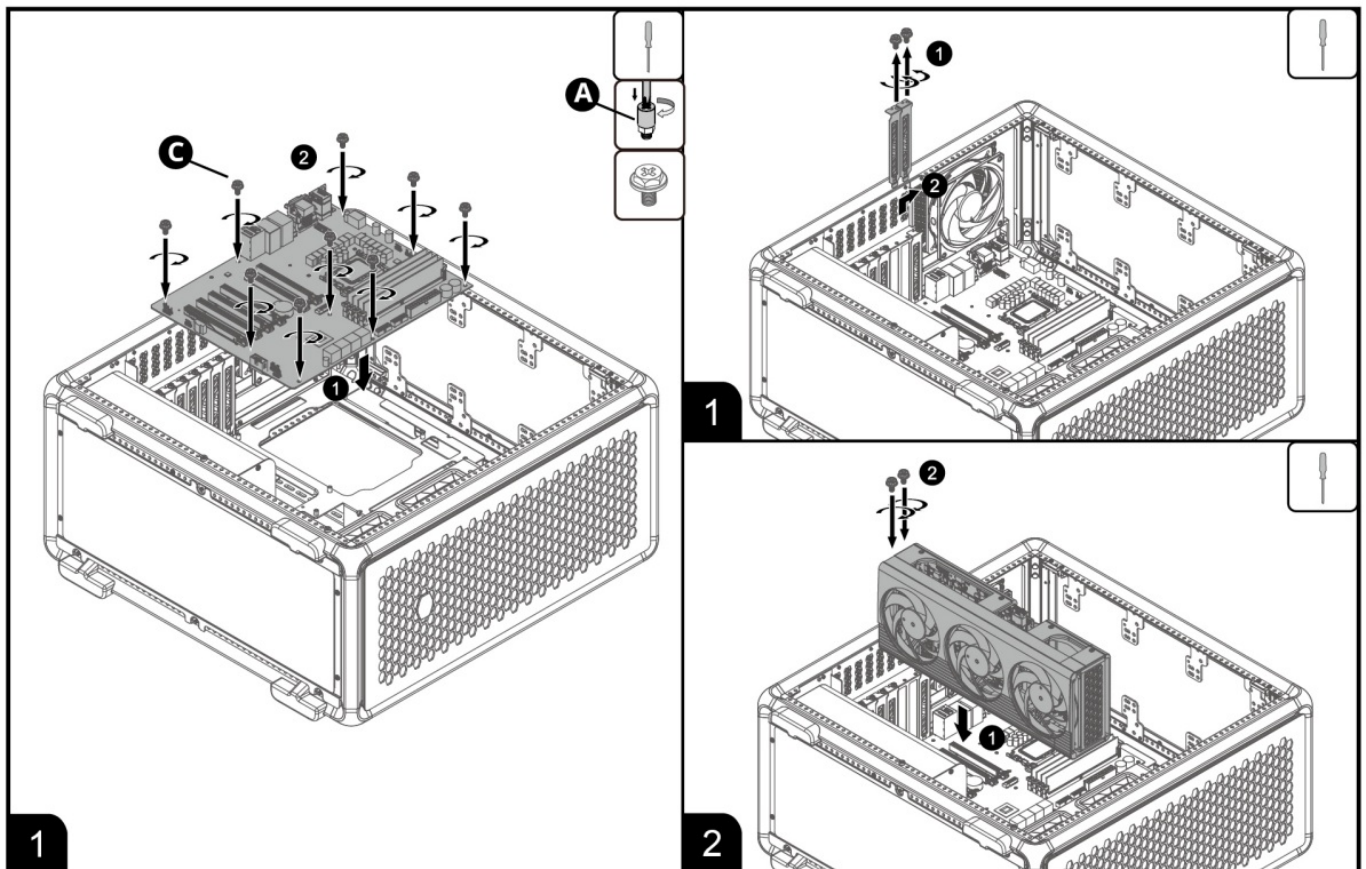


CHANGING THE PSU LAYOUT



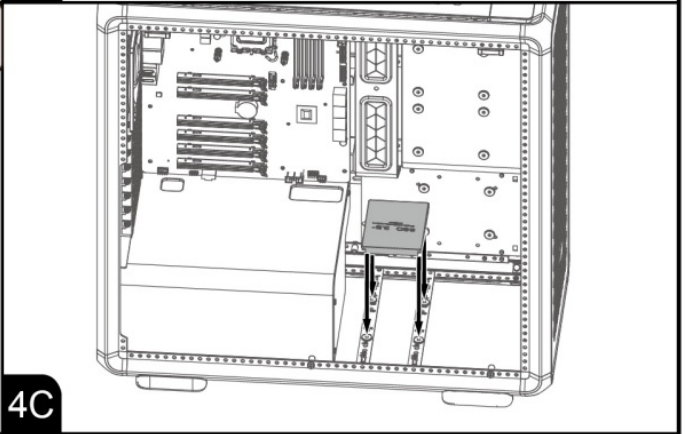
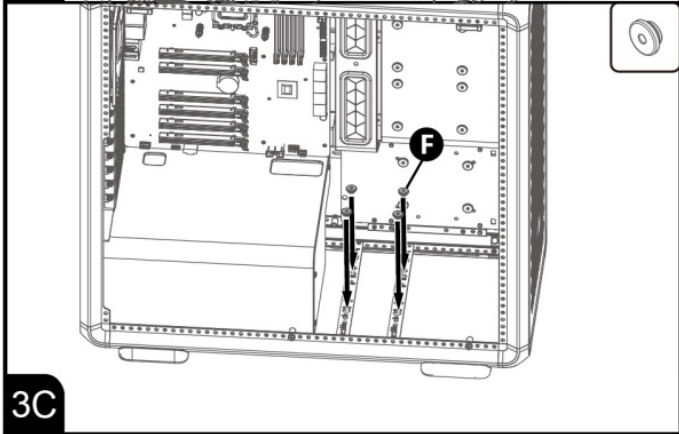
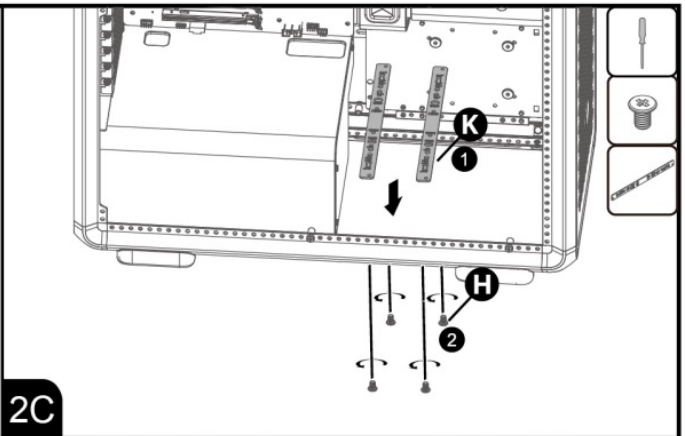
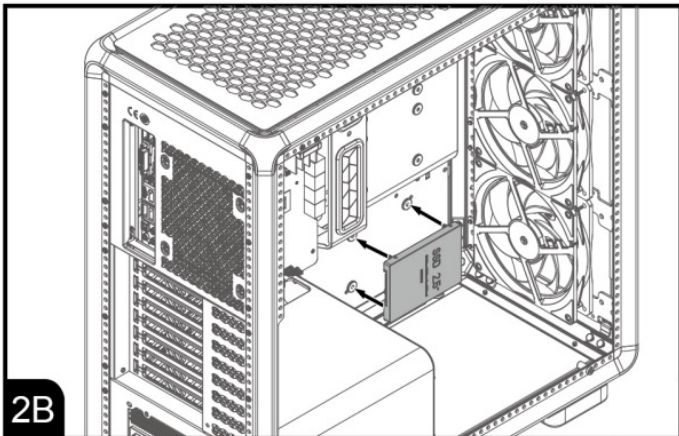
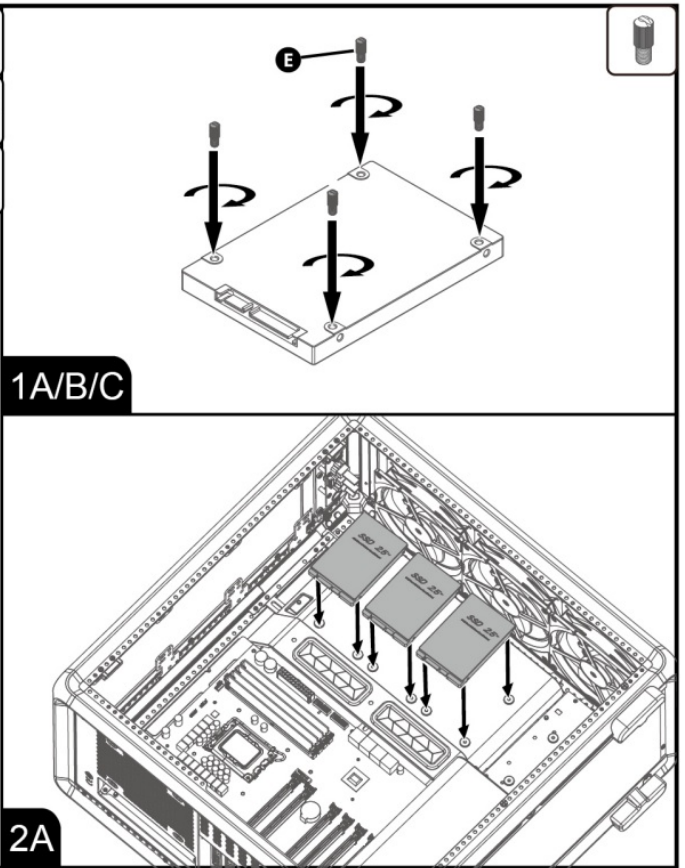
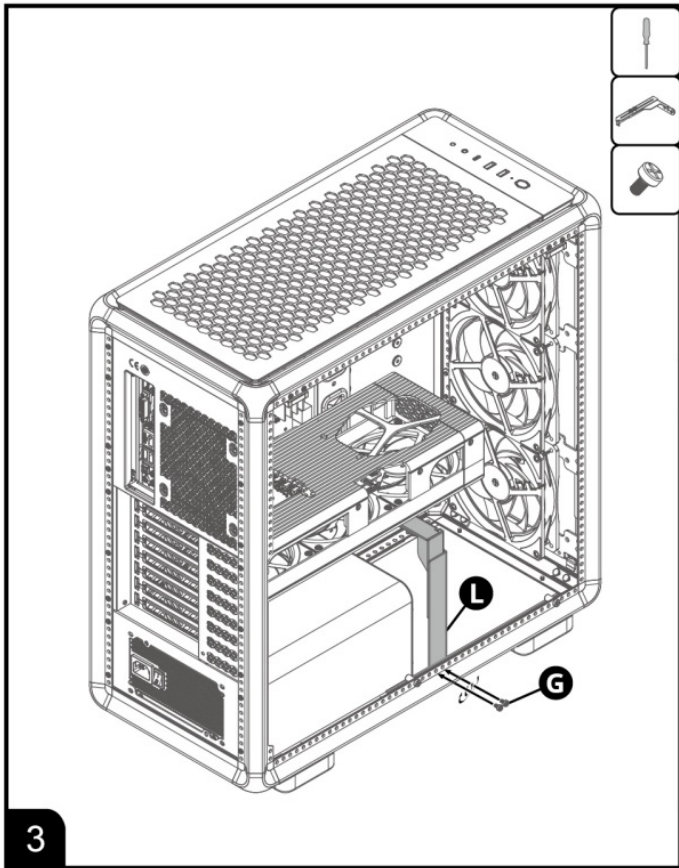


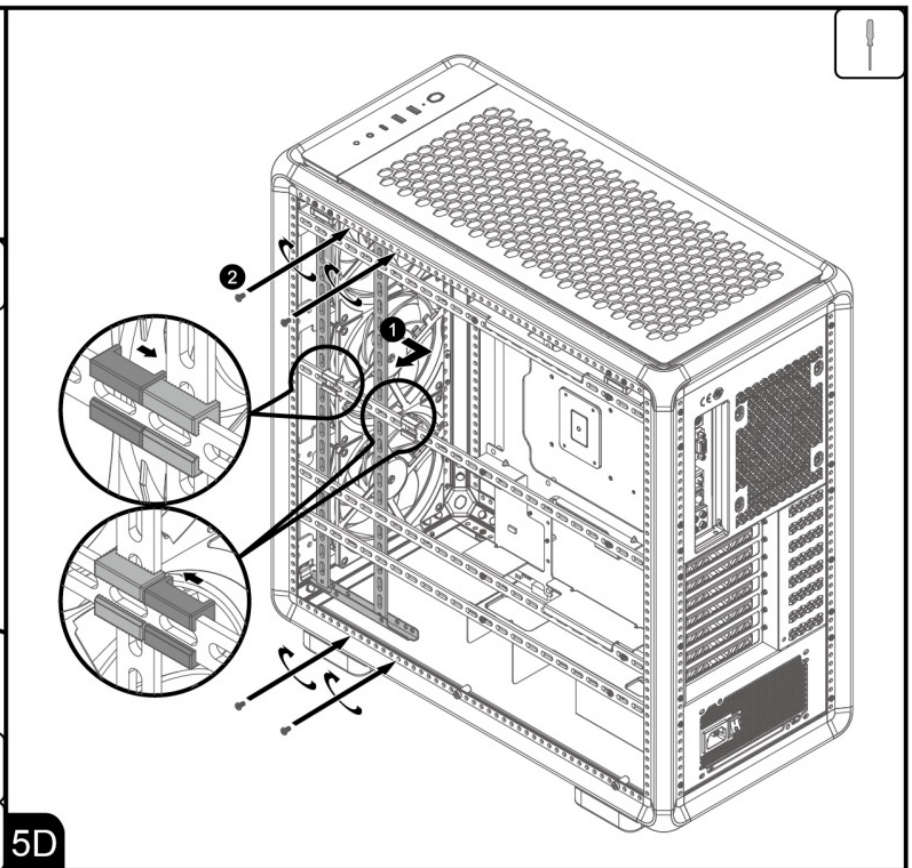
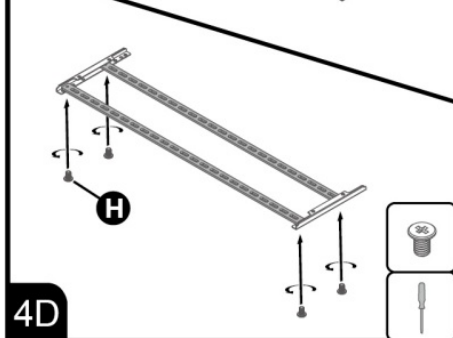
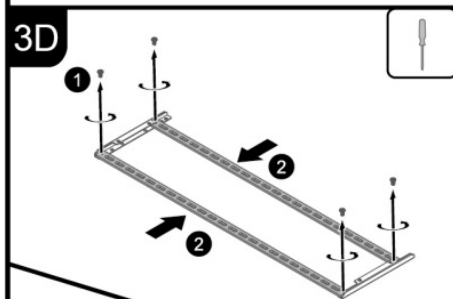
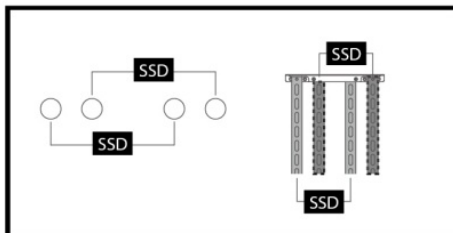
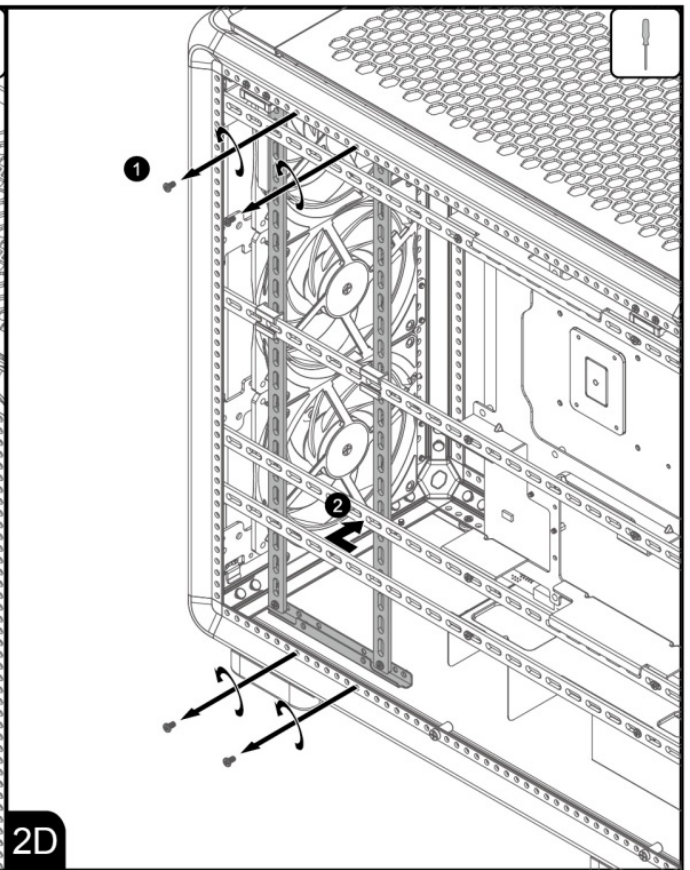
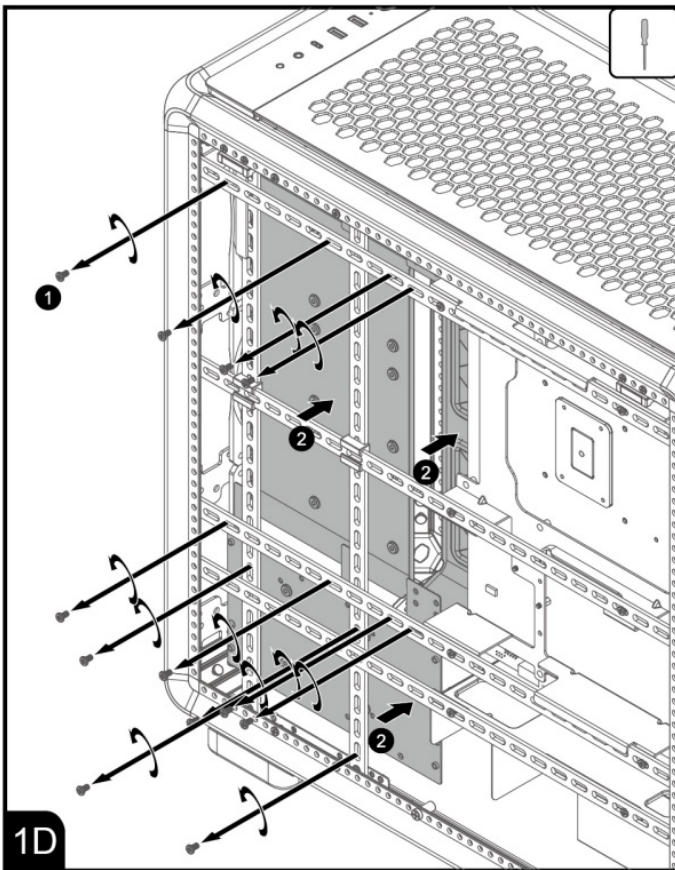
MOTHERBOARD INSTALLATION

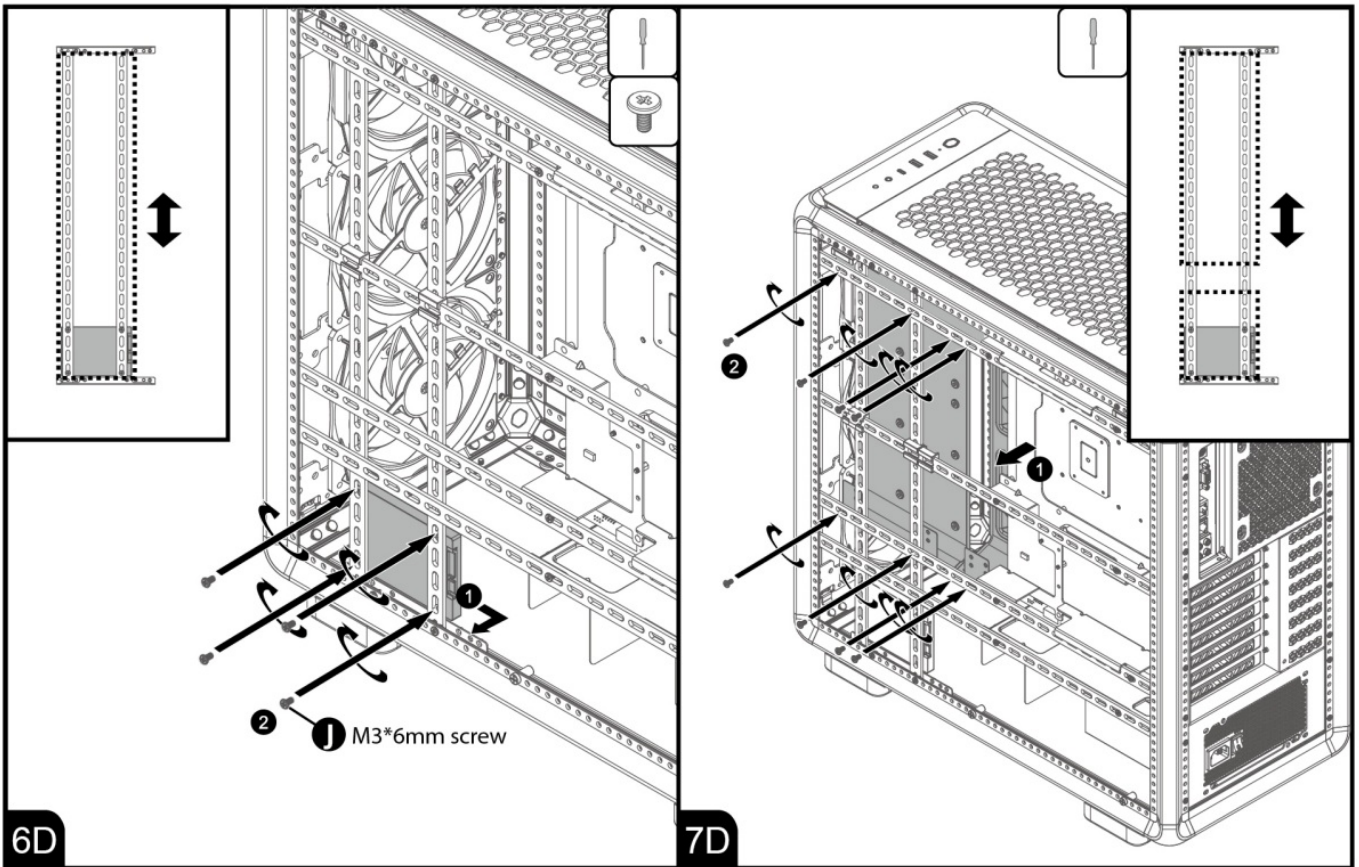


GPU INSTALLATION

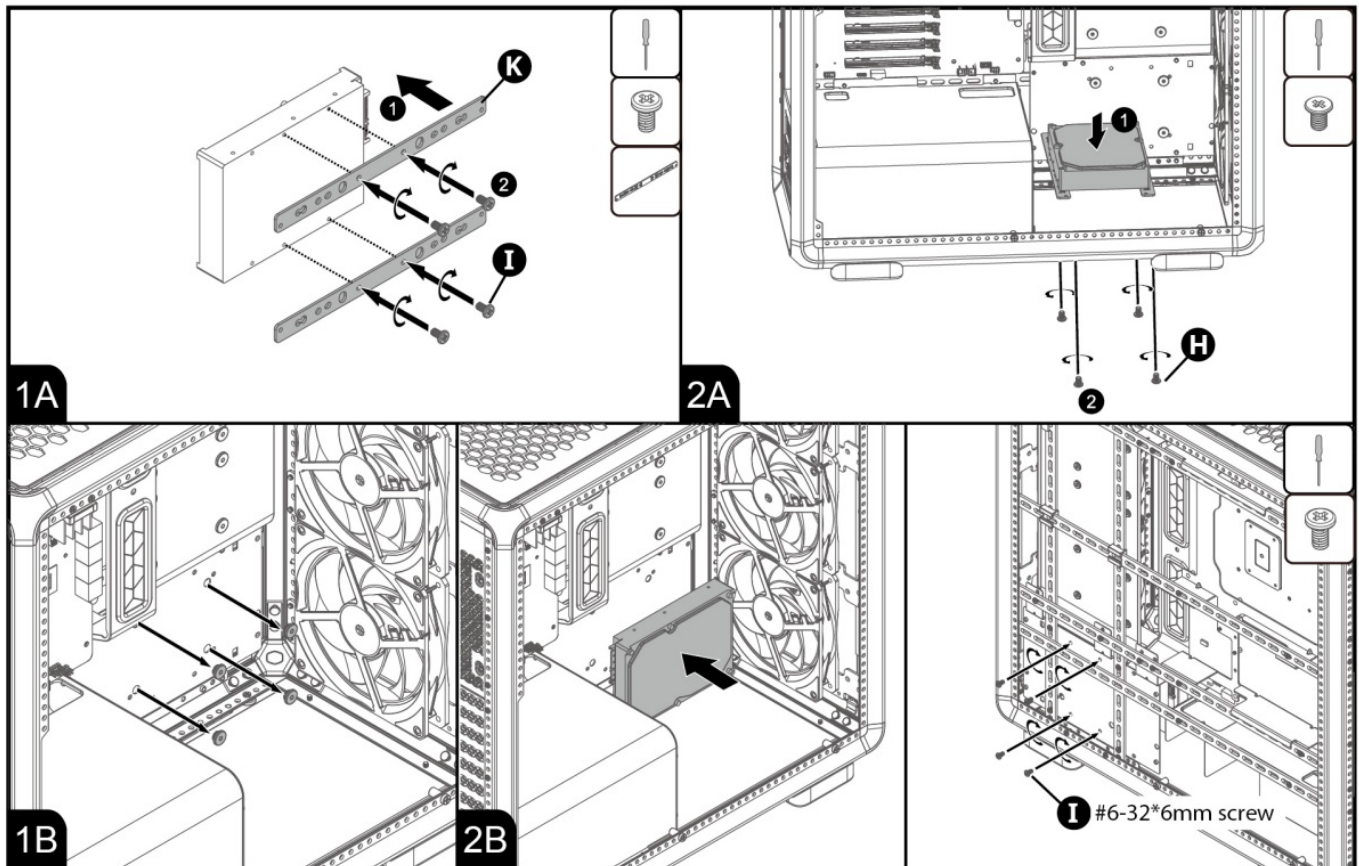
2.5" STORAGE INSTALLATION

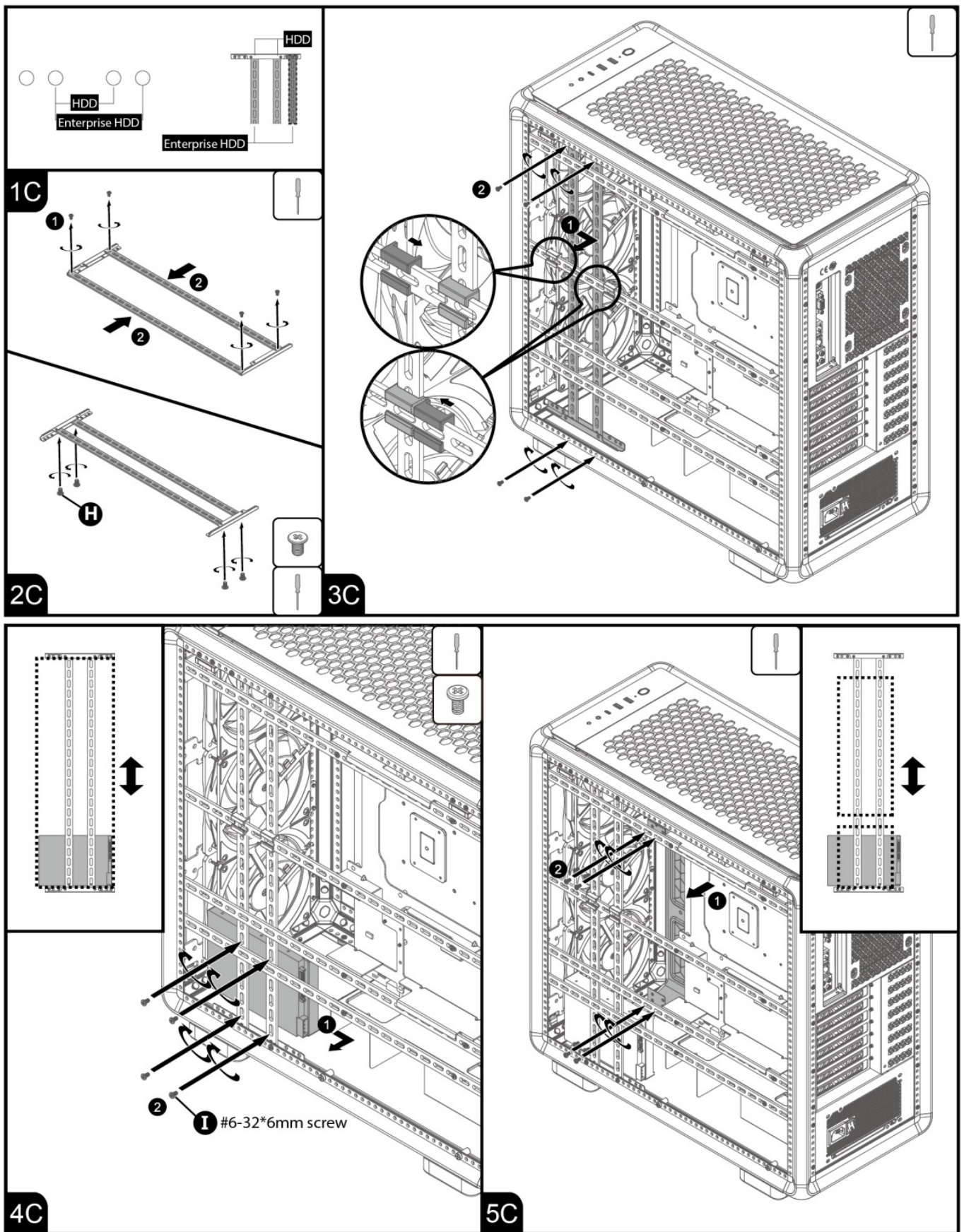




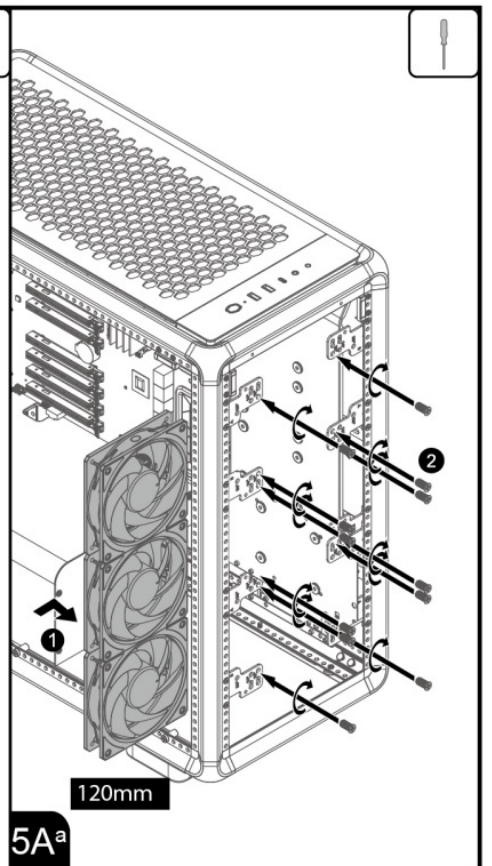
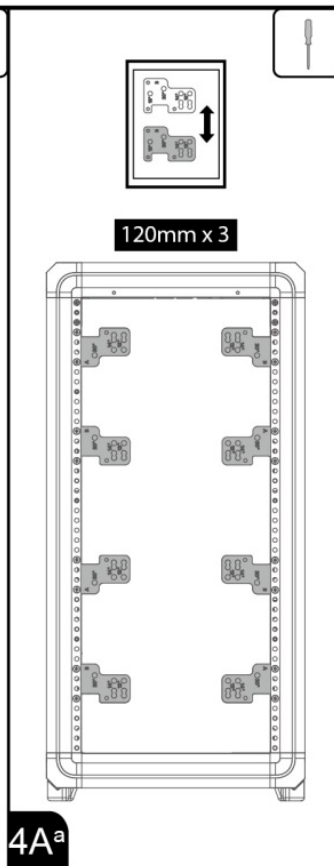
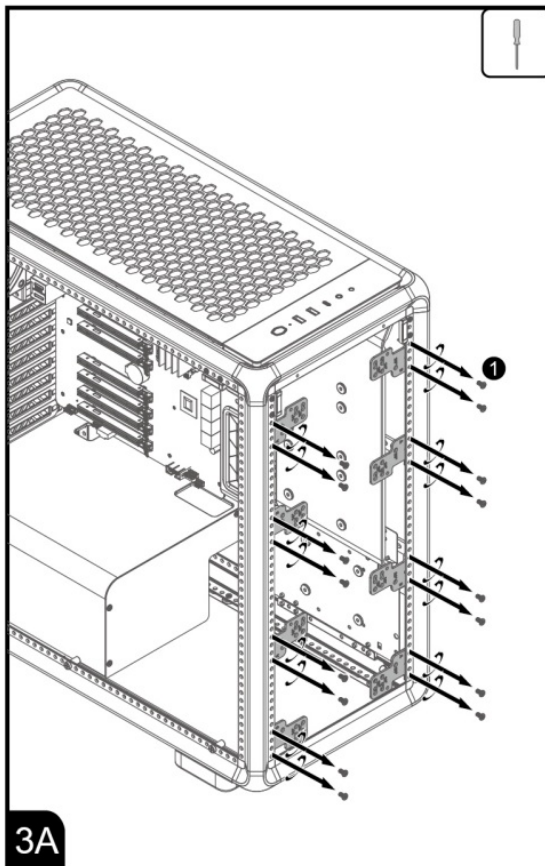
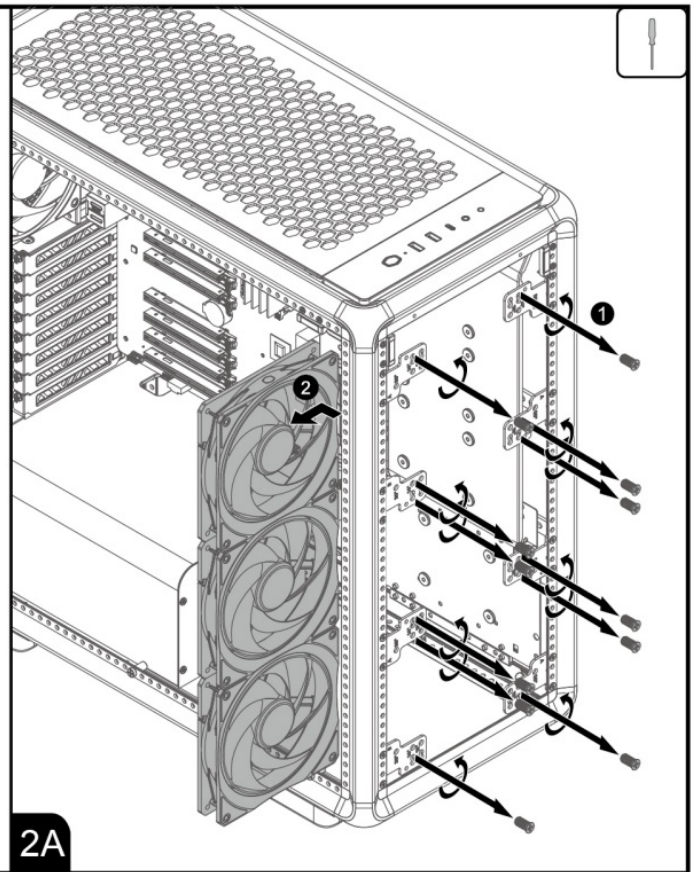
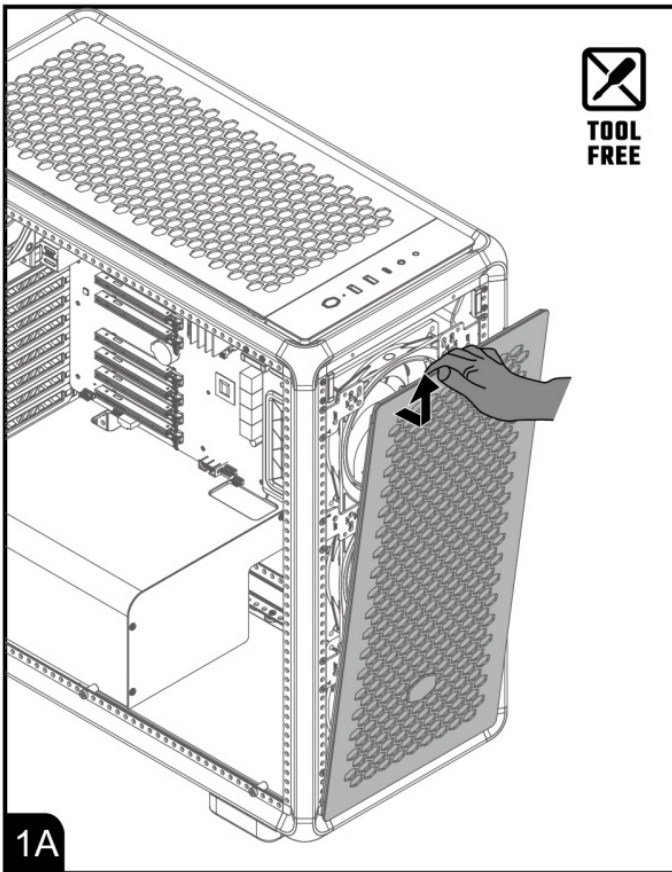


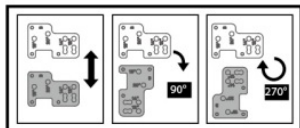
3.5" STORAGE INSTALLATION





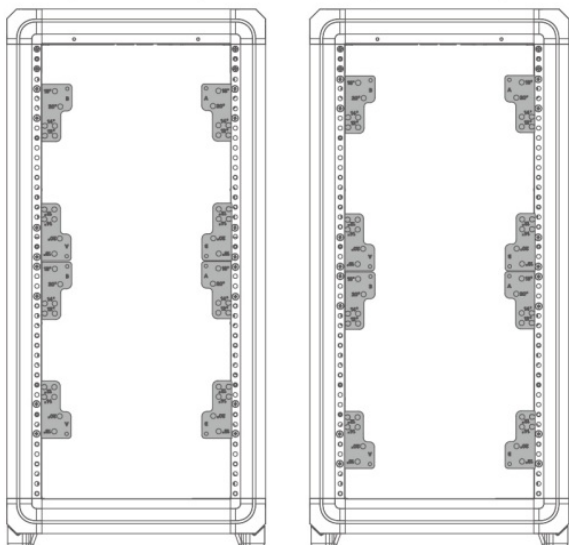
CHANGING THE FAN CONFIGURATION



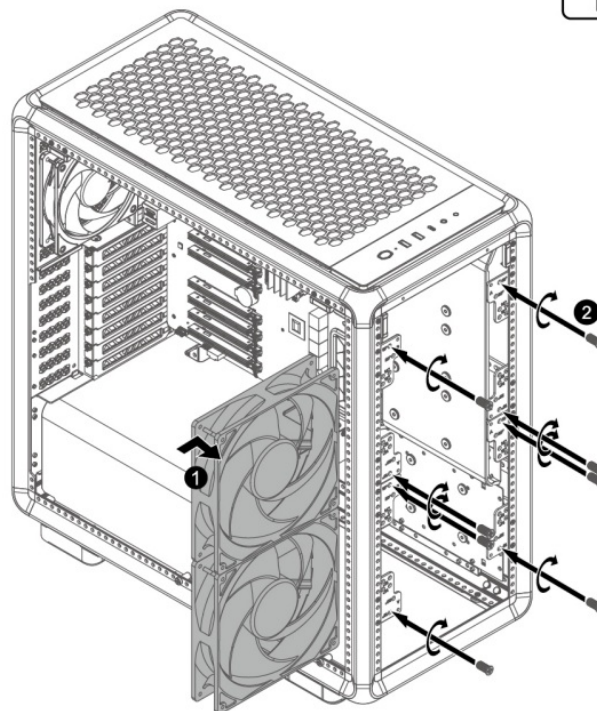


180mm x 2

200mm x 2

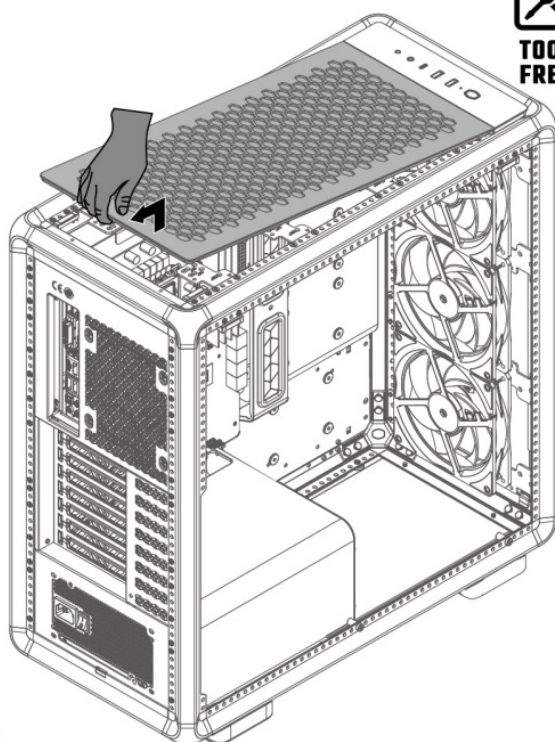


4A^{b/c}

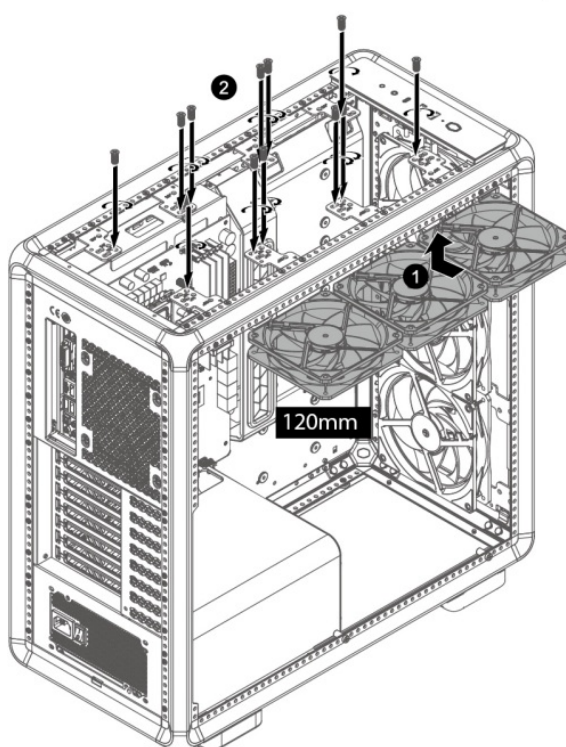


180/200mm

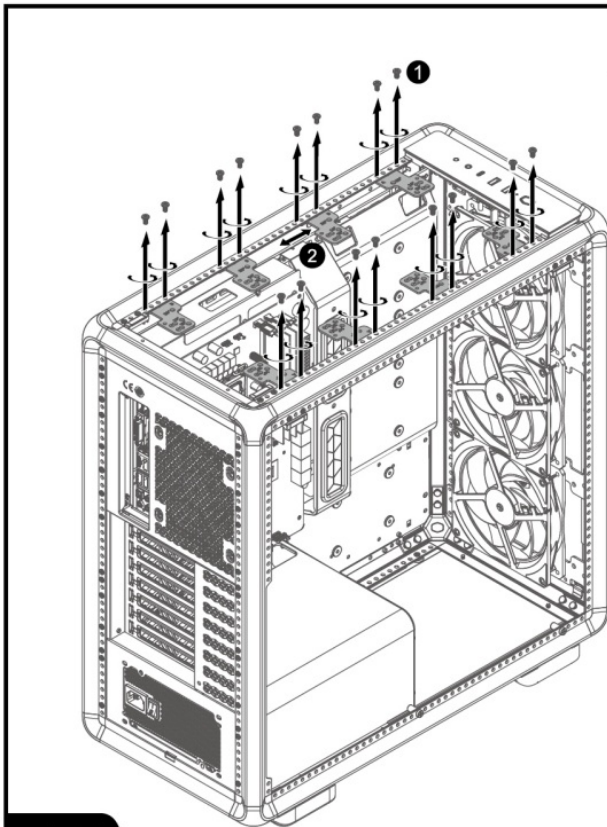
5A^{b/c}



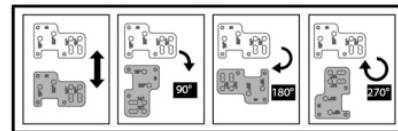
1B



2B^a

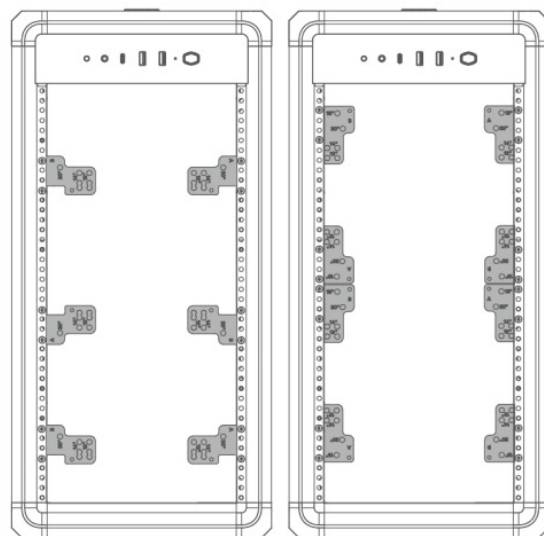


2B^{b/c/d}

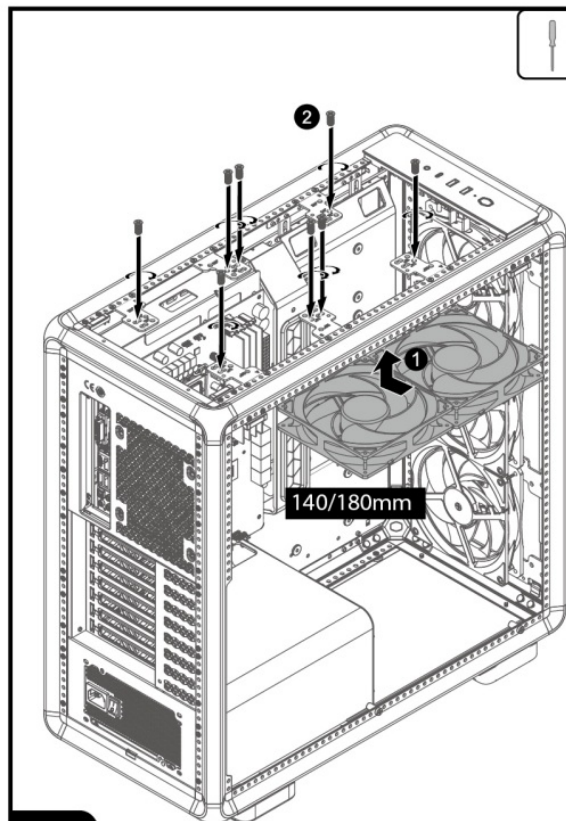


140mm x 2

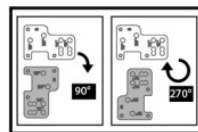
180mm x 2



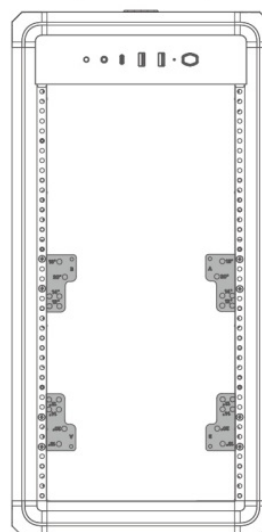
3B^{b/c}



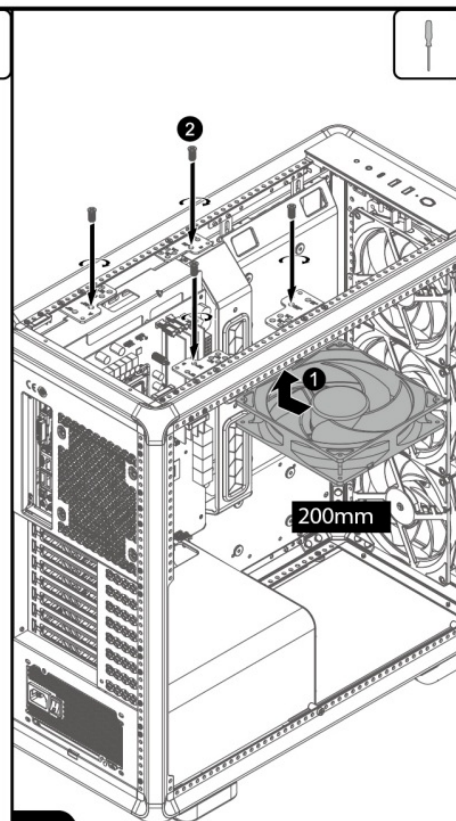
4B^{b/c}



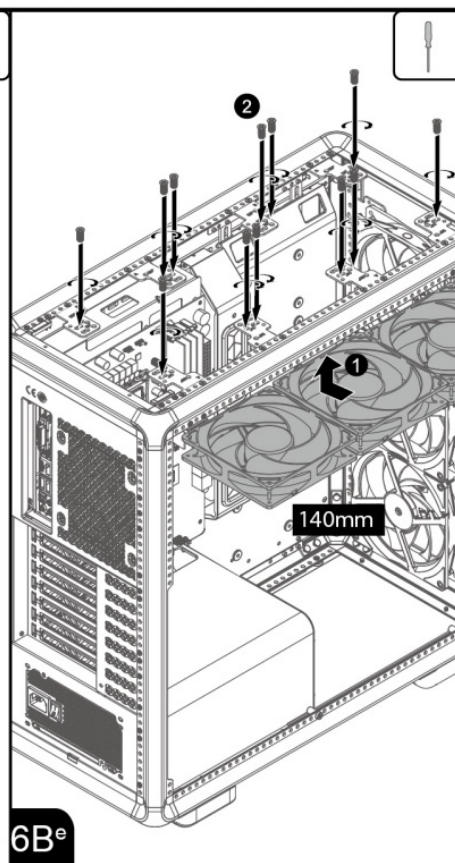
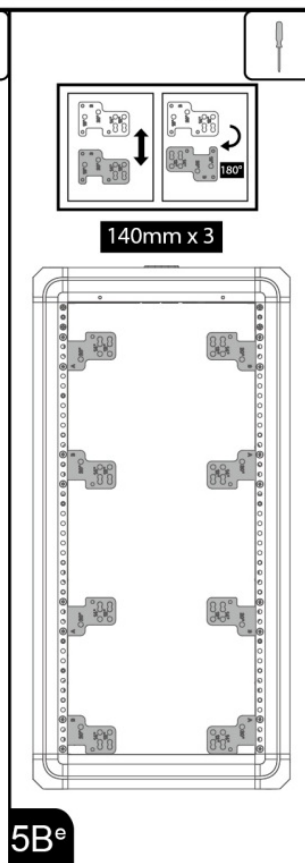
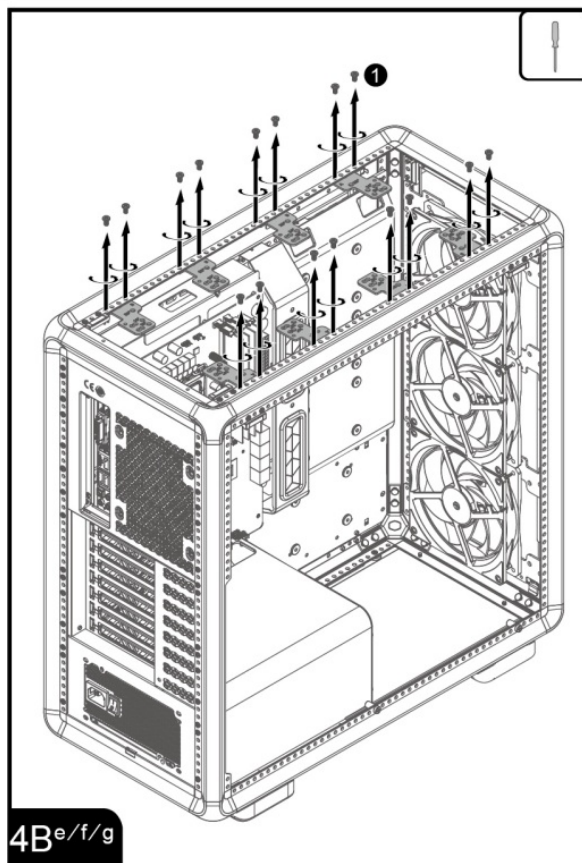
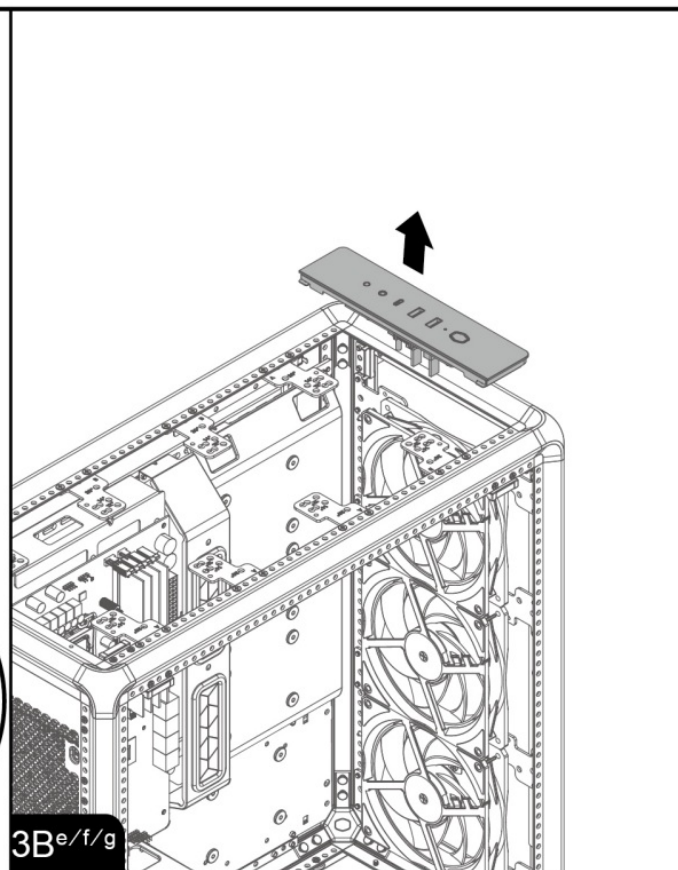
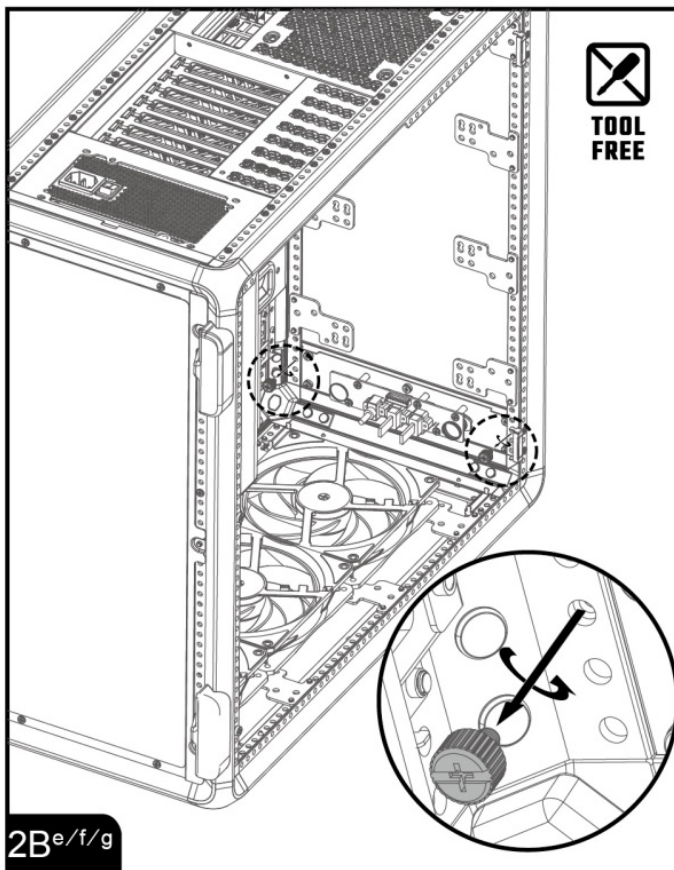
200mm x 1

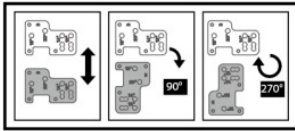


3B^d



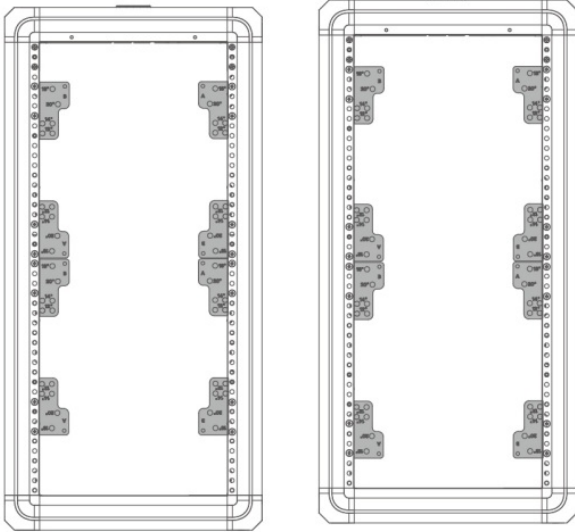
4B^d



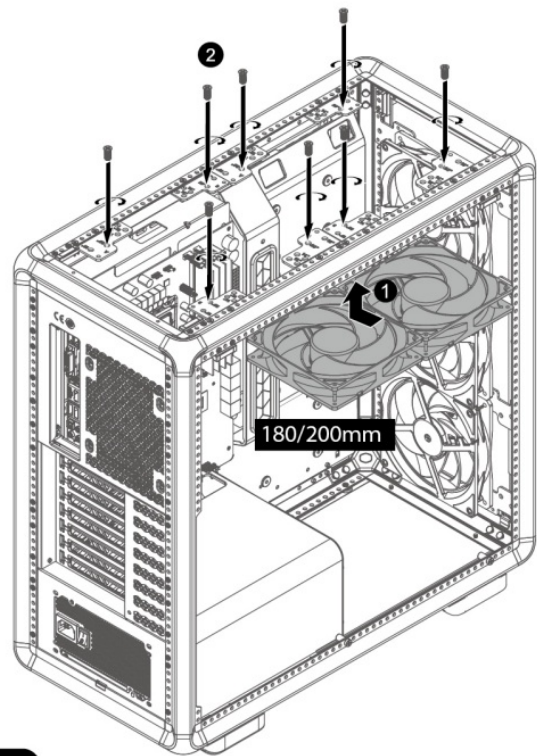


180mm x 2

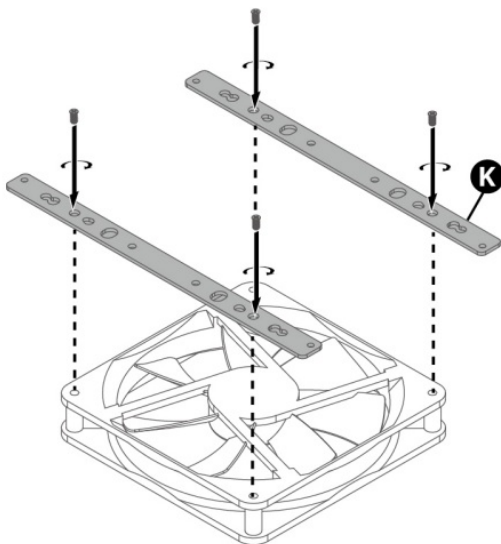
200mm x 2



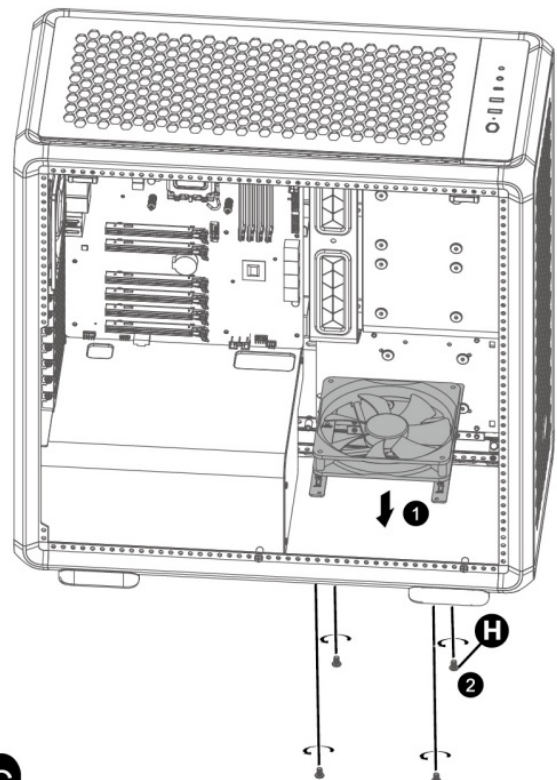
5B^{f/g}



6B^{f/g}

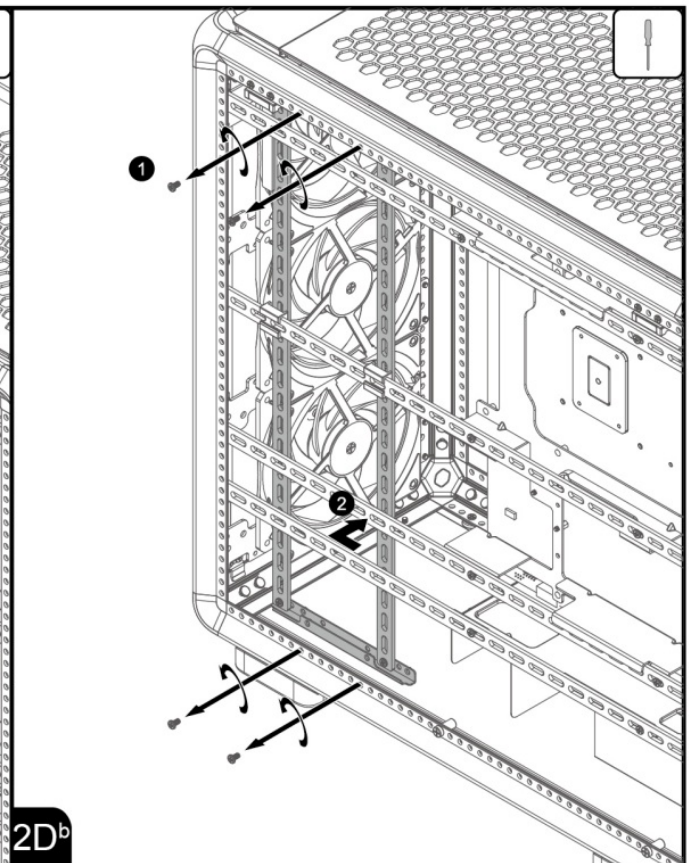
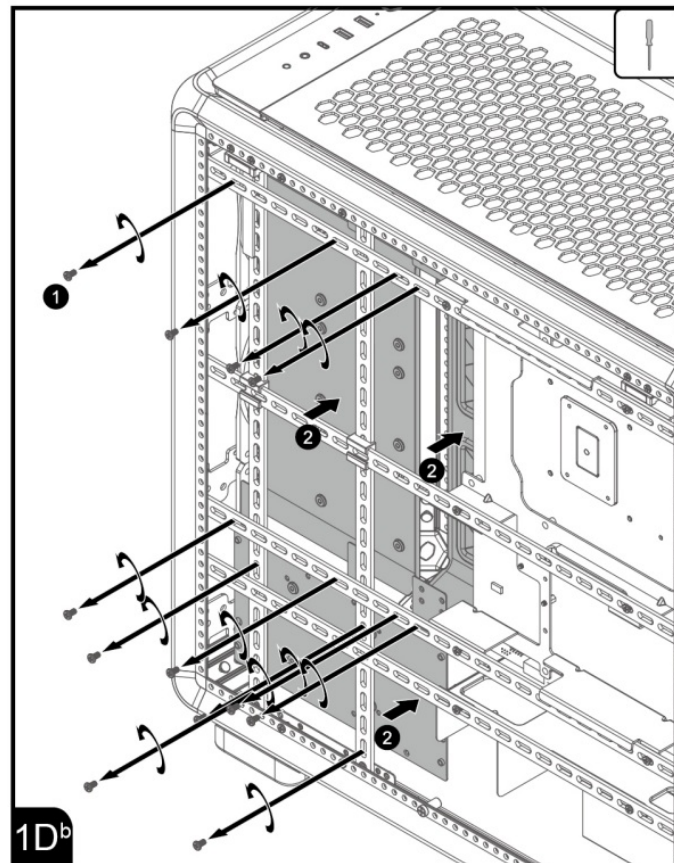
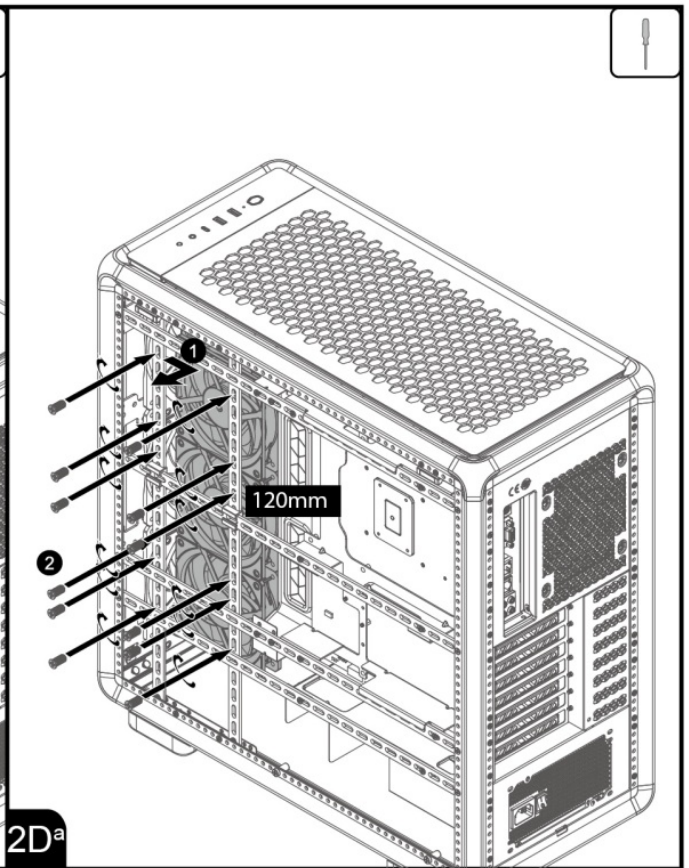
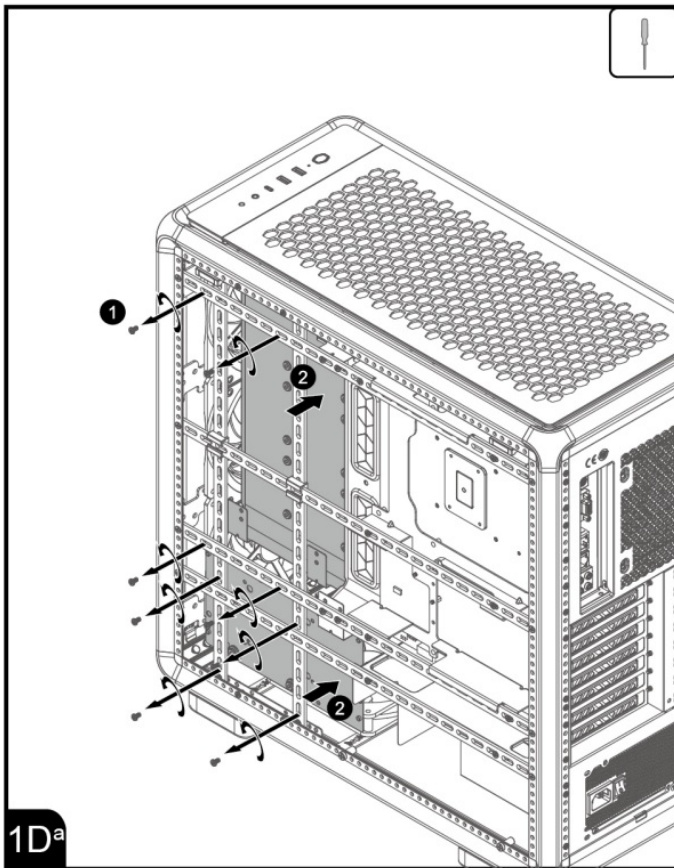


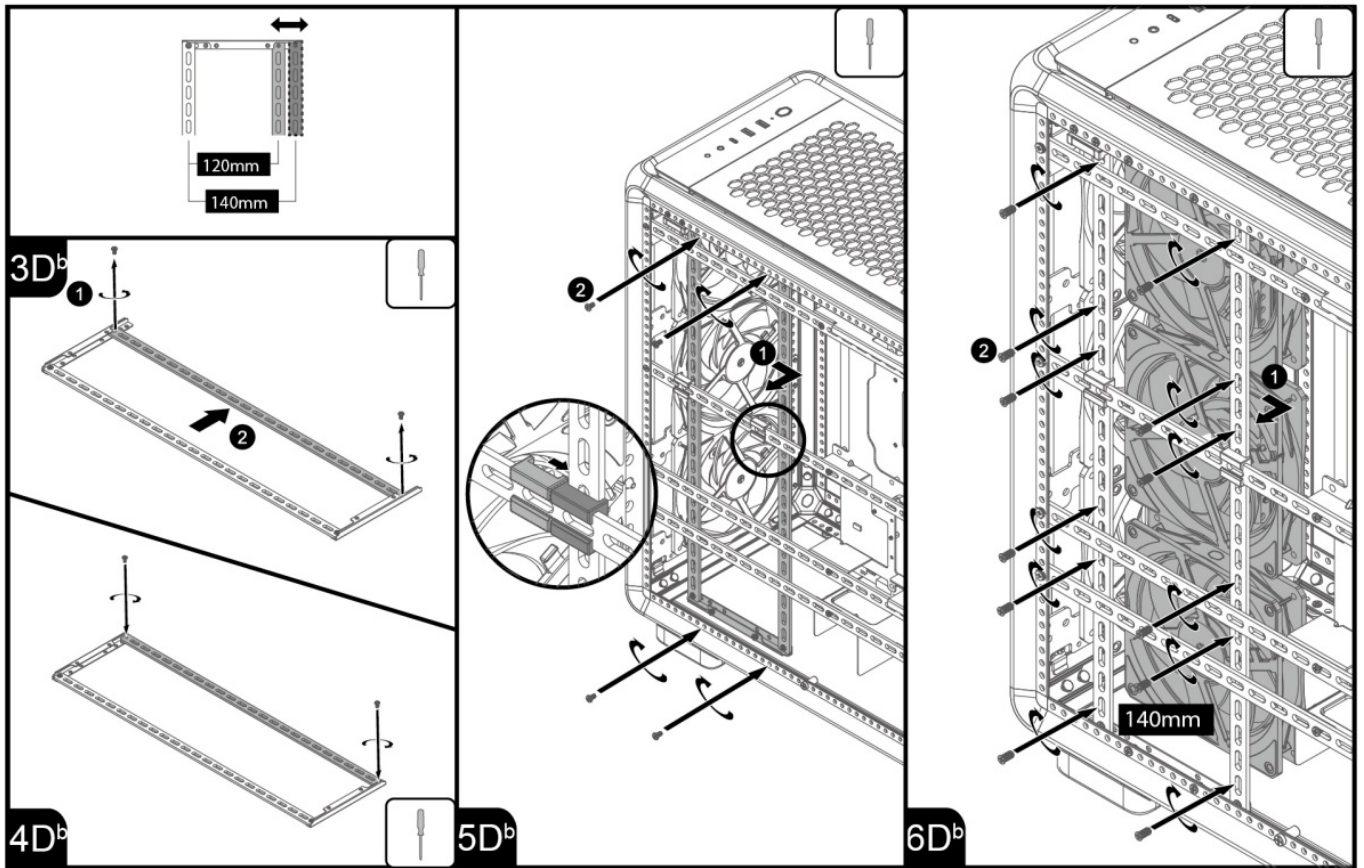
1C



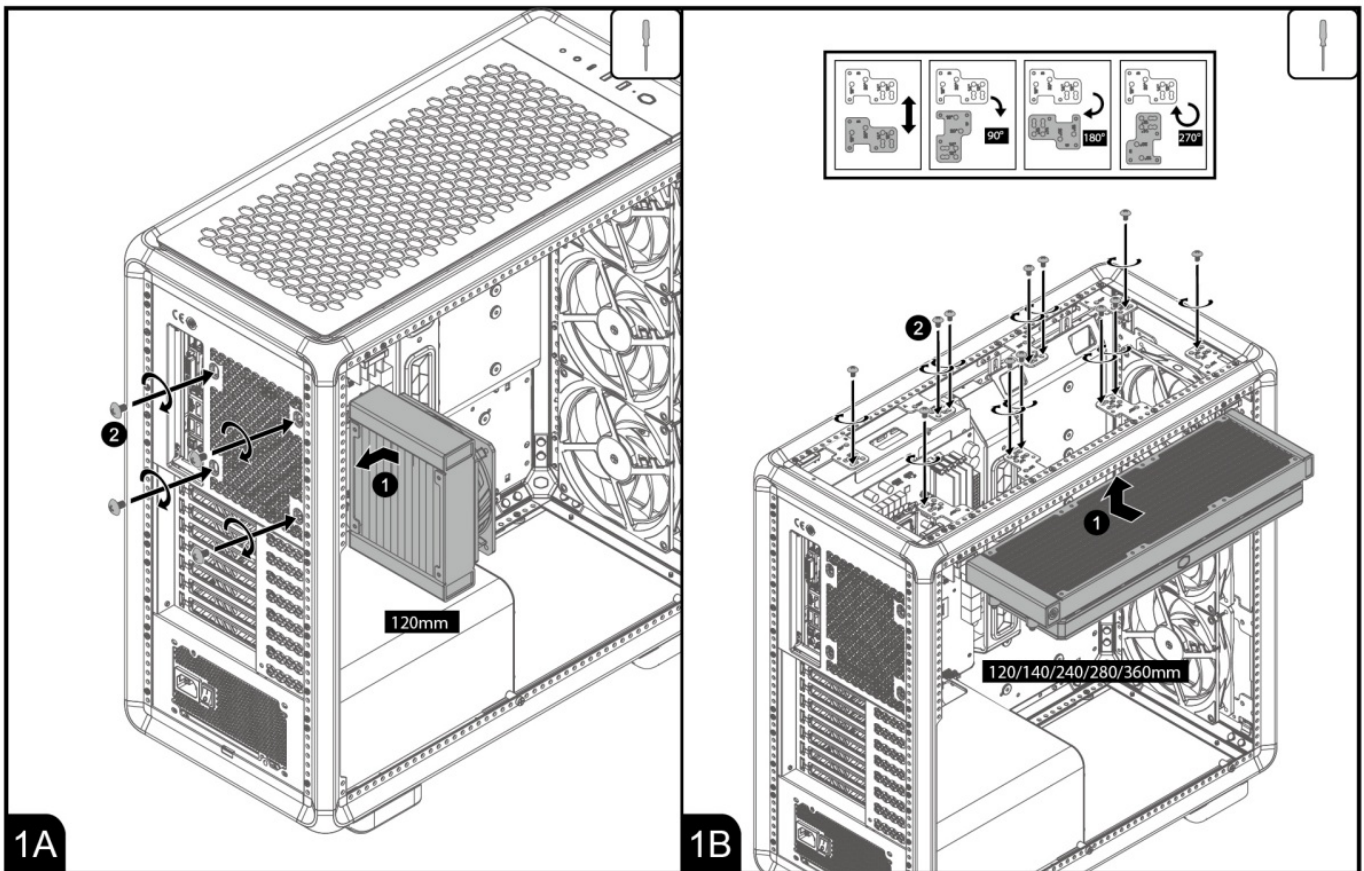
2C

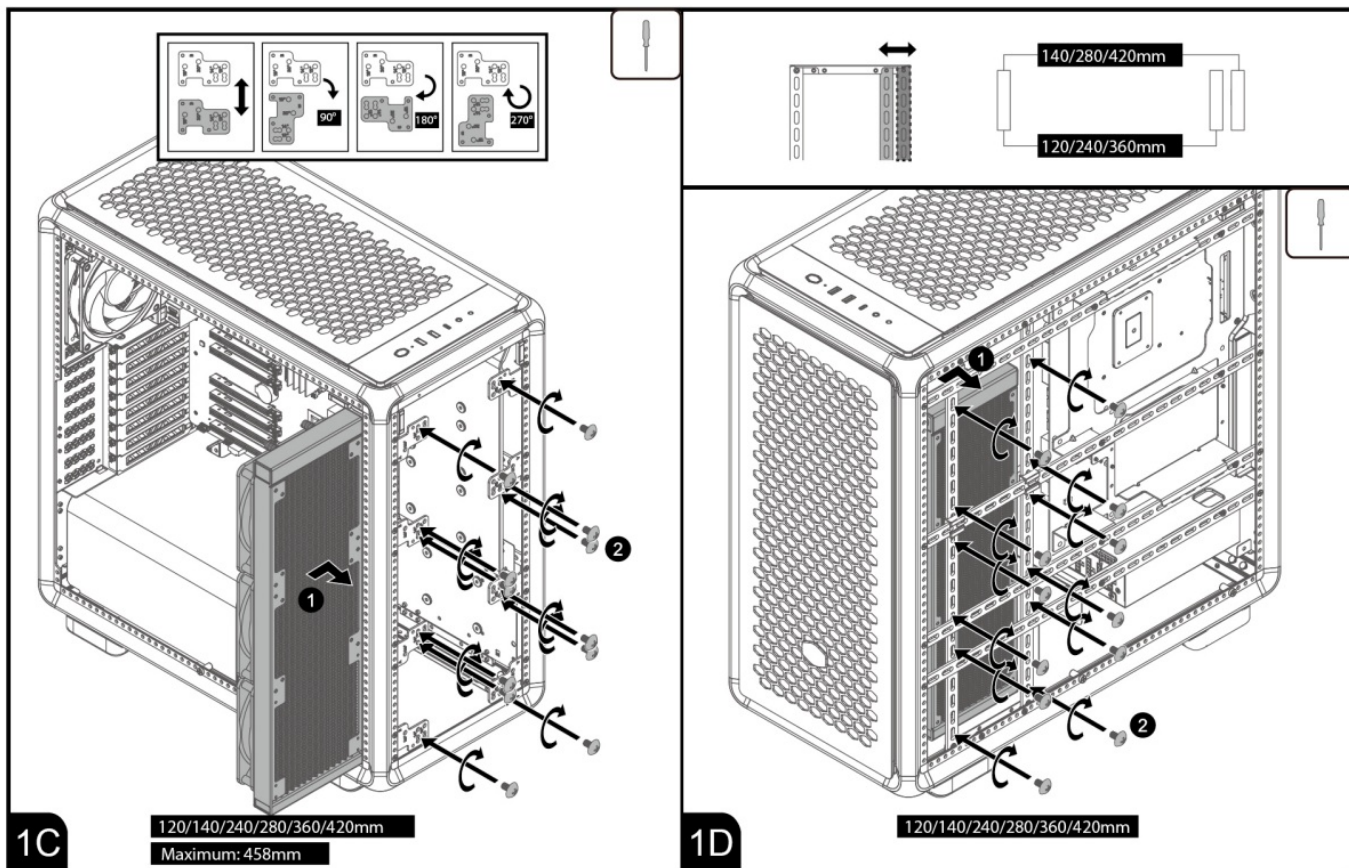




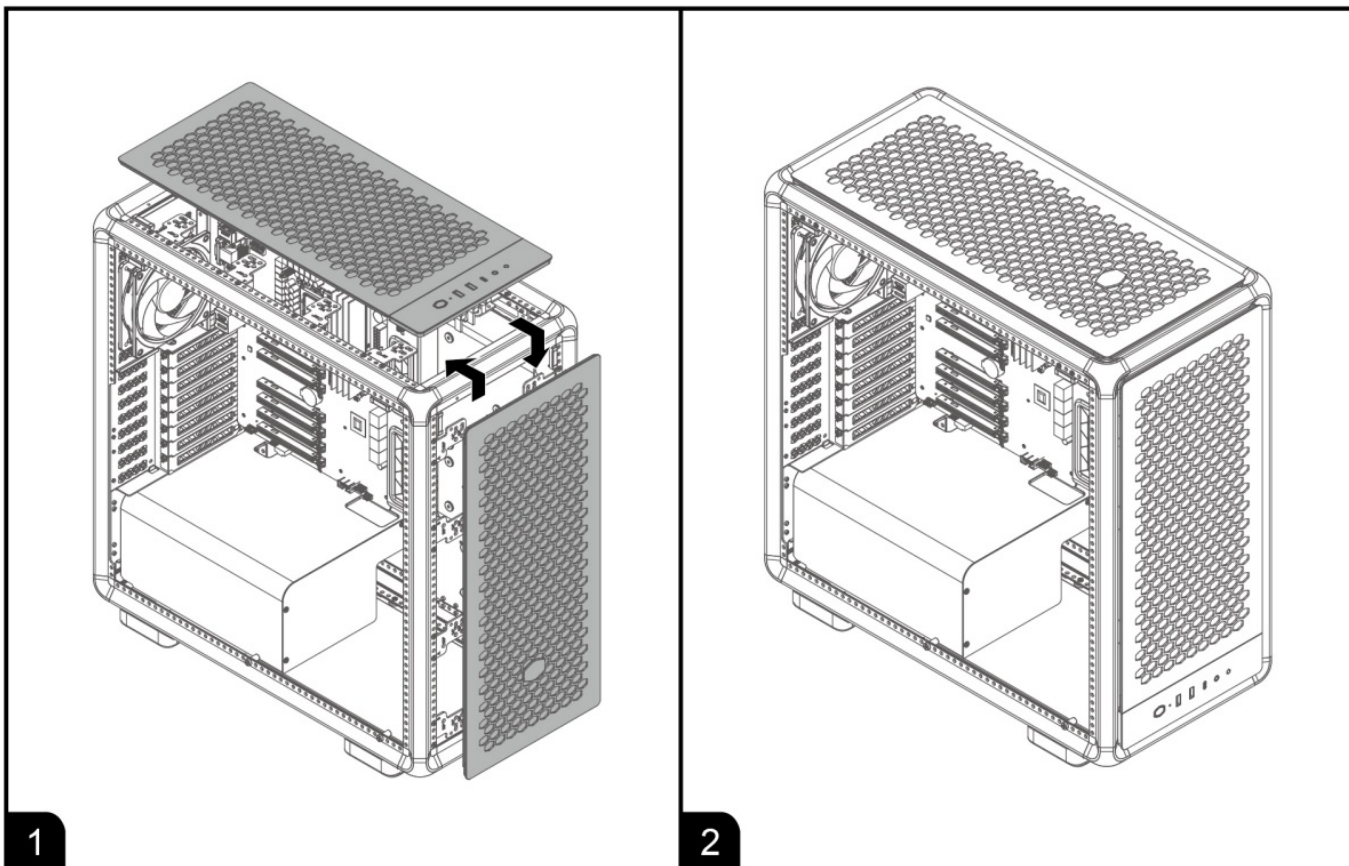


RADIATOR INSTALLATION

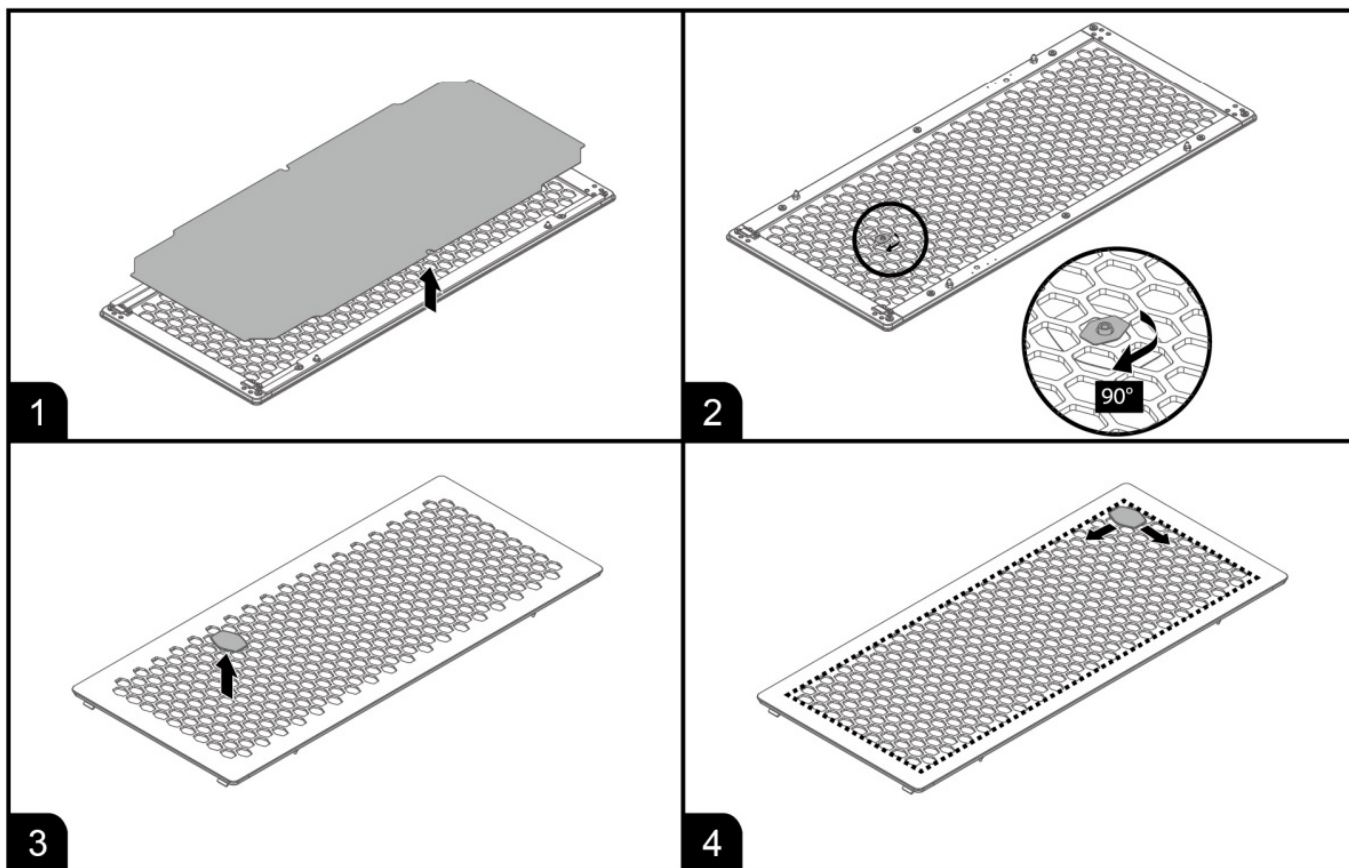




EXCHANGING PANELS



MOVING CM LOGO



WARRANTY INFORMATION

- Cooler Master guarantees that this device is free of defects in material and workmanship, and provides a two-year limited hardware warranty for the device commencing from the date of purchase. Please keep your receipt for proof of purchase.
- This product is designed for computer usage only. Using this device in any other capacity voids the warranty. If you are not familiar with computer hardware installation, please ask for professional assistance.
- The warranty offered covers normal use. Defect or damage that result from improper operation, storage, misuse or abuse, accident or neglect, which are not the fault of Cooler Master, are excluded from warranty coverage.
- **Note:** The warranty is voided by removal or alteration of product or parts identification labels.
- All OEM/bulk packaging products come with one one-year limited warranty
- In case of conflict between the warranty provided by the country of point of sale and this manual, the warranty of the actual country of point of sale shall be the prevailing

document.

- In case of malfunction of electronic components or need of accessories purchase during the warranty period, please return to the original store of purchase.

Cooler Master Products: Limited Warranty

This document describes the warranty terms for all Cooler Master product sold in Australia

For Australia only:

Our goods come with guarantees that cannot be excluded under the Australian Consumer Law. You are entitled to a replacement or refund for a major failure and for compensation for any other reasonably foreseeable loss or damage. You are also entitled to have the goods repaired or replaced if the goods fail to be of acceptable quality and the failure does not amount to a major failure.

- **Telephone:** +886-2-2225-3517 (standard international call charges apply.)
- **Who the Warranty Protects:** This Warranty is valid to the original purchaser only.
- **What the warranty protects:**
 - This warranty is valid only for the Cooler Master Products distributed by authorized dealer(s) in Australia. Please contact Cooler Master for warranty information and services:
- **Cooler Master Support:** account.coolermaster.com

What Is and Is Not Covered

It is important to note that our warranty is not an unconditional guarantee for the duration of the Program. Any replaced parts become the property of Cooler Master. The Program does not apply to the software component of a product or a product which has been damaged due to accident, misuse, abuse, improper installation, usage not in accordance with product specifications and instructions, natural or personal disaster, or unauthorized alterations, repairs or modifications.

The Program does not cover any events such as below:

- Any damages unrelated to manufacturing defects.
- Any unsuitable environment or use of the product in Cooler Master Opinion.

- Any product which has been modified without official permission from Cooler Master, or on which the serial number or warranty sticker has been defaced, modified, or removed. Damage, deterioration or malfunction resulting from:
- Accident, abuse, misuse, neglect, fire, water, lightning, or other acts of nature, commercial or industrial use, unauthorized product modification or failure to follow instructions included with the product.
- Third party products using Cooler Master Components will not be covered by warranty. See your vendor or the manufacturer for information about servicing.
- Repair or attempted repair by anyone not authorized by Cooler Master, Inc.
- Any shipment damages (claims must be made with the carrier).
- Unauthorized repairs to a Cooler Master product will void the warranty offered by the Program. Cooler Master reserves the right to refuse to service any product which has been altered, modified or repaired by non- Cooler Master Service personnel.
- Cooler Master does not warrant that this product will meet your requirements. It is your responsibility to determine the suitability of this product for your purpose.
- Removal or installation charges.
- You are responsible for the cost of shipping the product to Cooler Master. Cooler Master pays the cost of returning a product to you.
- Cooler Master reserves the right to replace the product with a service product at their sole discretion at any time.
- Product malfunction or damage resulting from liquids or moisture.
- All accessories that malfunction due to physical damage such as: USB cables, extension cables, adapter cables, adapters, power cords, screws, retention brackets, ear cups, and all other similar accessories.

Limitation of implied warranties:

THERE ARE NO WARRANTIES, EXPRESS OR IMPLIED, WHICH EXTEND BEYOND THE DESCRIPTION CONTAINED HEREIN INCLUDING THE IMPLIED WARRANTY OF MERCHANTABILITY AND FITNESS FOR A PARTICULAR PURPOSE.

Exclusion of damages

COOLER MASTER'S LIABILITY IS LIMITED TO THE COST OF REPAIR OR REPLACEMENT OF THE PRODUCT. COOLER MASTER SHALL NOT BE LIABLE FOR:

- DAMAGE TO OTHER PROPERTY CAUSED BY ANY DEFECT IN THE PRODUCT, DAMAGES BASED UPON INCONVENIENCE, LOSS OF USE OF THE PRODUCT, LOSS OF TIME, LOSS OF PROFITS, LOSS OF BUSINESS OPPORTUNITY, LOSS OF GOODWILL, INTERFERENCE WITH BUSINESS RELATIONSHIPS OR OTHER COMMERCIAL LOSS, EVEN IF ADVISED OF THEIR POSSIBILITY OF SUCH DAMAGES.
- ANY OTHER DAMAGES, WHETHER INCIDENTAL, CONSEQUENTIAL OR OTHERWISE
- ANY CLAIM AGAINST THE CUSTOMER BY ANY OTHER PARTY

Warranty Information:

If the goods is found with reasonable defect within the period of (refer to Table A.,) starting on the first day of purchase (with proof of invoice), this is what you must do, to claim the warranty from the above address.

Procedures:

1. Consumers should return to the shop where he/she has bought the goods, After confirming with the shop with a valid invoice, they may approach the distributor for RMA claim.
2. After confirmed by the distributor that the goods was damaged due to natural causes, replacement and repair will be done by distributor (including brand new or refurbished goods)
3. All faulty goods must return to the distributor, expenses for returning the faulty goods will be covered by the consumer, and distributor will cover the cost involved in the transporting of parts or repaired goods to the consumer.

Regarding all the expenses incurred in making the claim, and this is how you would claim:

1. Within the valid warranty date, starting from the first day of issuing invoice, Retail shops will assist in confirmation with distributor for the consumer for the following.
 - A. If the damage was caused by the consumer, then the consumer should cover all expenses in fixing the product, if the product still can't be fixed, we would suggest consumer in buying a brand new product.

- B. Product defect caused under natural use, expenses will be covered by the distributor.
2. Faulty products with expired warranty dates, we would suggest consumer to purchase a brand new products, without undergoing for repairs.

Table A:

Cooler Master Products

- Please check your user manual for the exact warranty period terms for products that are not shown below.
- For more warranty information, please visit our official website:
<http://www.coolermaster.com/service/warranty.html>

Limited warranty period: <http://www.coolermaster.com/service/warranty.html>

Make It Yours

- Europe – Cooler Master Europe B.V. Lodewijkstraat 1 b, 5652Ac Eindhoven, The Netherlands
- Tel: +31-(0)40-702-0900
- North America – Cooler Master NA
- 1 N Indian Hill Blvd Suite D200 Claremont, CA91711, USA
- Tel: +1-[888-624-5099](tel:888-624-5099)
- Cooler Master China
- Room 112, Building 9, No. 327,
- Songjin Road, Jinshanwei Town, Jinshan Dist., Shanghai City, China
- Tel: 400-9986-400



CoolerMaster website

- For the most updated information,

- Please visit our official website:

- www.coolermaster.com



Technical Support

account.coolermaster.com



Cooler Master Europe B.V.

- Lodewijkstraat 1 b, 5652AC Eindhoven, the Netherlands
- consumer-care@coolermaster.eu

512007132-GP ver 3.0: 2025/06

- The color and specification are subject to be changed without further notification.
Please visit our website for updated information: www.coolermaster.com
- 02025 Cooler Master Technology Inc. All Rights Reserved. All trademarks are registered to their respective owners.

FAQs

Can I switch out the side panels?

Yes—MasterFrame600 panels are magnetic and swappable. Cooler Master offers alternative panels (wood veneer, colored metal) under the FreeForm2.0 ecosystem.


How many cooling options does it support?

It can house up to *11 fans* and three large radiators (up to 420mm in front, top, and side), ideal for both air and custom liquid cooling setups.

Will it fit high-end GPUs and large PSUs?

Absolutely—supports GPUs up to *485mm* with clearance for power connectors, and ATX PSUs up to *235mm*. Ideal for full-sized modern hardware.

Documents / Resources

 MASTER FRAME BUILD GUIDE	Masterframe 600 ATX CASE Designed For Modular Builds [pdf] User Guide 9669ba168efdac60c840f3b22d995c1377bf, 512007132-GP-MF600-Manual- -2025-03-06, 600 ATX CASE Designed For Modular Builds, 600 ATX CASE, Designed For Modular Builds, Modular Builds, Builds
--	--

References

- [User Manual](#)

Masterframe
512007132-GP-MF600-Manual- -2025-03-06, 600 ATX CASE, 600 ATX CASE Designed For Modular Builds, 9669ba168efdac60c840f3b22d995c1377bf, Builds, Designed For Modular Builds, Masterframe, Modular Builds

Leave a comment

Your email address will not be published. Required fields are marked *

Comment *

Name

Email

Website

☐ Save my name, email, and website in this browser for the next time I comment.

Post Comment

Search:

e.g. whirlpool wrf535swhz

Search

[Manuals+](#) | [Upload](#) | [Deep Search](#) | [Privacy Policy](#) | [@manuals.plus](#) | [YouTube](#)

This website is an independent publication and is neither affiliated with nor endorsed by any of the trademark owners. The "Bluetooth®" word mark and logos are registered trademarks owned by Bluetooth SIG, Inc. The "Wi-Fi®" word mark and logos are registered trademarks owned by the Wi-Fi Alliance. Any use of these marks on this website does not imply any affiliation with or endorsement.