


**MASTERBUILT<sup>™</sup>**  
**MB20070924 Power**  
**Circuit Board**



# MASTERBUILT MB20070924 Power Circuit Board Installation Guide

[Home](#) » [Masterbuilt](#) » MASTERBUILT MB20070924 Power Circuit Board Installation Guide 

## Contents

- [1 MASTERBUILT MB20070924 Power Circuit Board](#)
- [2 Specifications](#)
- [3 Product Usage Instructions](#)
- [4 Frequently Asked Questions \(FAQ\)](#)
- [5 Documents / Resources](#)
  - [5.1 References](#)
- [6 Related Posts](#)

# MASTERBUILT<sup>™</sup>

**MASTERBUILT MB20070924 Power Circuit Board**



## Specifications

- **Product Name:** Power Circuit Board (PCB)
- **Model Numbers:** MB20070924, MB20072024, MB20072124, MB20072224
- **Tool Required:** Phillips head screwdriver

## Product Usage Instructions

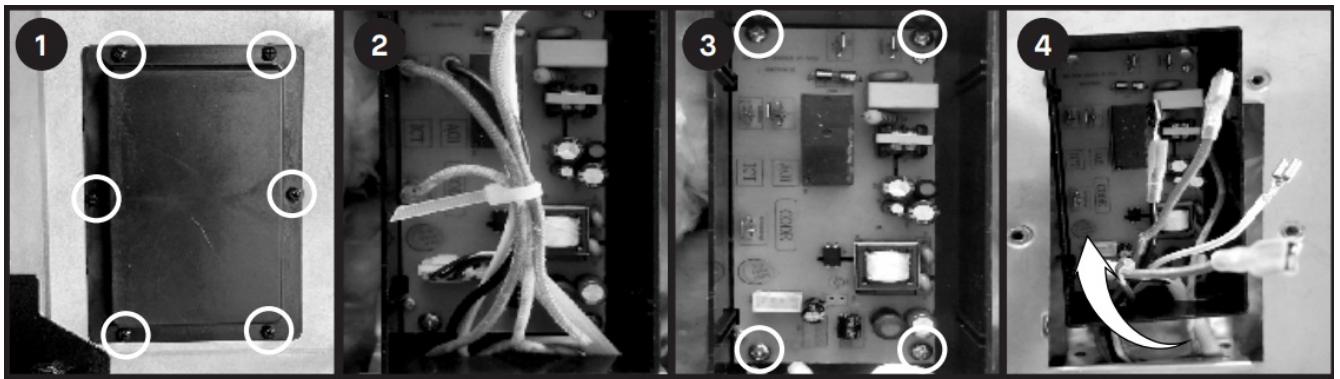
### Access/Replacement Steps for MB20070924:

#### CAUTION

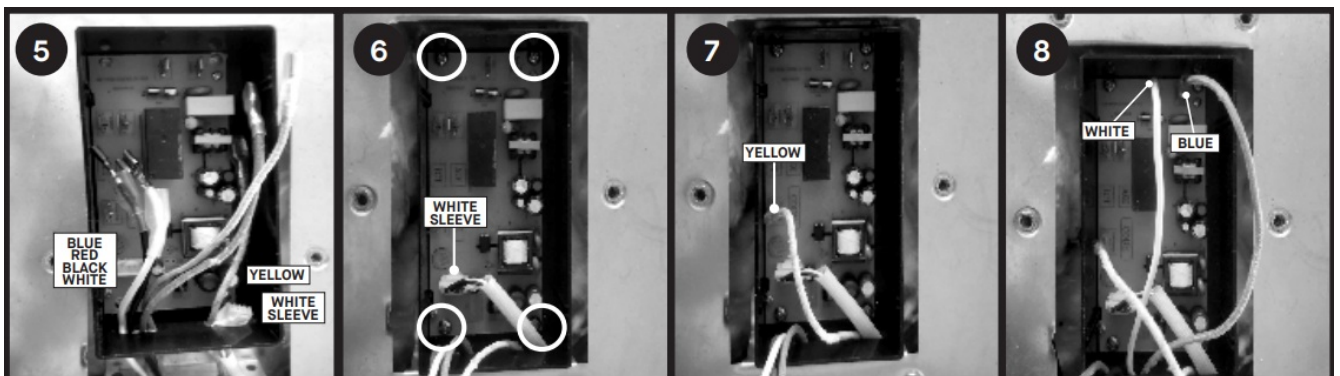
- Always remove plug from the outlet before servicing your smoker.
- Make sure your smoker has fully cooled to avoid burns.
- Some components may have sharp edges. Use caution to avoid injury.

Tool needed for access and replacement: Phillips head screwdriver.

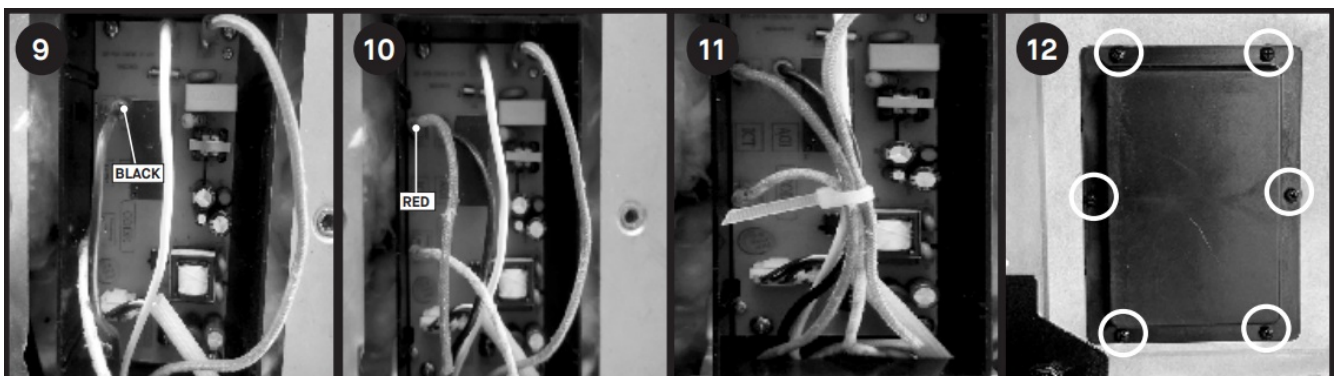
1. Remove 6 screws and PCB shields. The shield is located on the bottom of the smoker.
2. Remove the zip tie.
3. Unplug all 6 wires from connection terminals and remove 4 screws.
4. Remove the PCB with the plastic housing.



5. Replace with the new PCB:
  - The White Sleeve and Yellow wire go through the right hole.
  - The Blue, Red, Black, and White wires go through the left hole.
6. Plug in the large white sleeved terminal connection. Secure the PCB board with 4 screws.
7. Plug in the Yellow ground wire.
8. Plug in the Blue and White terminal connections.



9. Plug in the Black terminal connection.
10. Plug in the Red terminal connection.
11. Zip-tie the wires.
12. Replace the plastic shield.

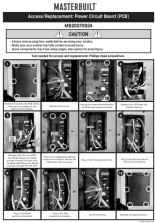


## Frequently Asked Questions (FAQ)

**Q: What tools are needed for accessing or replacing the Power Circuit Board (PCB)?**

**A:** A Phillips head screwdriver is required for accessing or replacing the PCB.

## Documents / Resources



[MASTERBUILT MB20070924 Power Circuit Board](#) [pdf] Installation Guide  
MB20070924, MB20072024, MB20072124, MB20072224, MB20070924 Power Circuit Board,  
MB20070924, Power Circuit Board, Circuit Board, Board

References

- [User Manual](#)

[Manuals+](#), [Privacy Policy](#)

This website is an independent publication and is neither affiliated with nor endorsed by any of the trademark owners. The "Bluetooth®" word mark and logos are registered trademarks owned by Bluetooth SIG, Inc. The "Wi-Fi®" word mark and logos are registered trademarks owned by the Wi-Fi Alliance. Any use of these marks on this website does not imply any affiliation with or endorsement.