

MASTERBUILT MB20041124 Temp Probe Kit Instructions



MASTERBUILT MB20041124 Temp Probe Kit Instructions

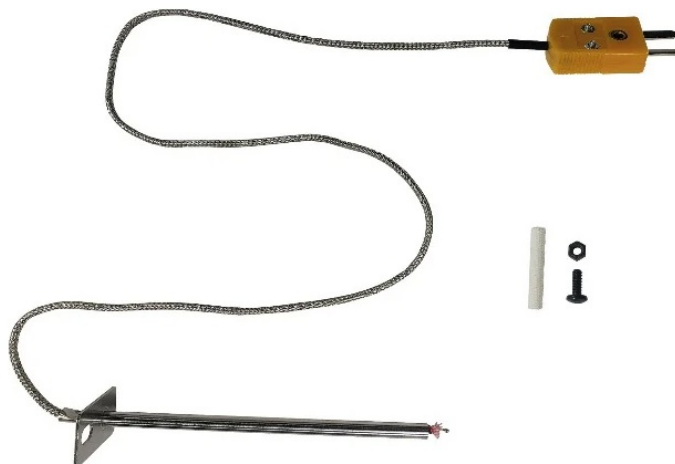
[Home](#) » [Masterbuilt](#) » MASTERBUILT MB20041124 Temp Probe Kit Instructions 

Contents

- [1 MASTERBUILT MB20041124 Temp Probe Kit](#)
- [2 Product Information](#)
- [3 Product Usage Instructions](#)
- [4 FAQ \(Frequently Asked Questions\)](#)
- [5 Documents / Resources](#)
 - [5.1 References](#)

MASTERBUILT®

MASTERBUILT MB20041124 Temp Probe Kit



Product Information

Specifications

- **Product Name:** Autolgnite 545 Temp Probe Kit Replacement
- **Model Numbers:** MB20041124, MB20042724
- **Tool Needed:** Phillips head screwdriver

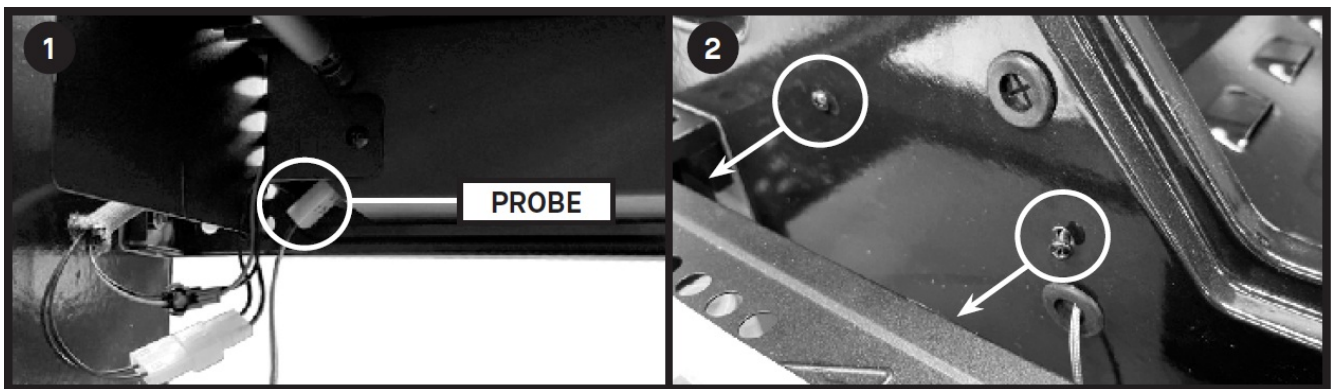
Product Usage Instructions

CAUTION

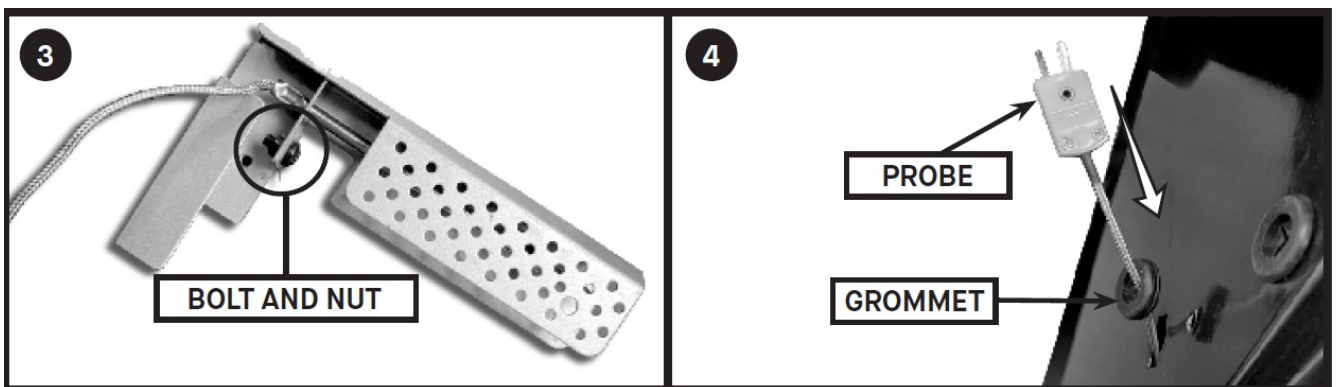
- Make sure the grill has cooled completely before handling to avoid burns.
- Some components may have sharp edges. Use caution and wear protective gloves to avoid injury.
- Power OFF the grill and disconnect the power from the wall before handling.

Tool needed for access and replacement: Phillips head screwdriver.

1. Unplug temperature probe from the controller (this is found under the side shelf).
2. Remove 2 screws from outside the grill.



3. Remove temp probe and bracket from grill. Remove bolt and nut that secures the old temp probe to the bracket.
4. Remove grommet from temp probe. Feed the yellow end of temp probe into grill body to remove.



Probe Removal

1. Unplug the temperature probe from the controller. Locate the probe under the side shelf.
2. Use a Phillips head screwdriver to remove the 2 screws from outside the grill.
3. Remove the temperature probe and bracket from the grill.
4. Unscrew the bolt and nut securing the old temperature probe to the bracket.

Installation

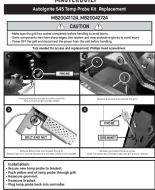
1. Remove the grommet from the temperature probe.
2. Feed the yellow end of the temperature probe into the grill body for installation.

FAQ (Frequently Asked Questions)

Q: What tools are required for replacing the Autolgnite 545 Temp Probe Kit?

A: You will need a Phillips head screwdriver for access and replacement.

Documents / Resources

	<p>MASTERBUILT MB20041124 Temp Probe Kit [pdf] Instructions MB20041124 Temp Probe Kit, MB20041124, Temp Probe Kit, Probe Kit, Kit</p>
---	---

References

- [User Manual](#)

[Manuals+](#), [Privacy Policy](#)

This website is an independent publication and is neither affiliated with nor endorsed by any of the trademark owners. The "Bluetooth®" word mark and logos are registered trademarks owned by Bluetooth SIG, Inc. The "Wi-Fi®" word mark and logos are registered trademarks owned by the Wi-Fi Alliance. Any use of these marks on this website does not imply any affiliation with or endorsement.