



MASTER MARK ROCK FACE Splash Block Installation Guide

[Home](#) » [MASTER MARK](#) » MASTER MARK ROCK FACE Splash Block Installation Guide 



ROCK FACE SPLASH BLOCK



INSTALL GUIDE

Splash block helps direct water away from your home's foundation

Contents

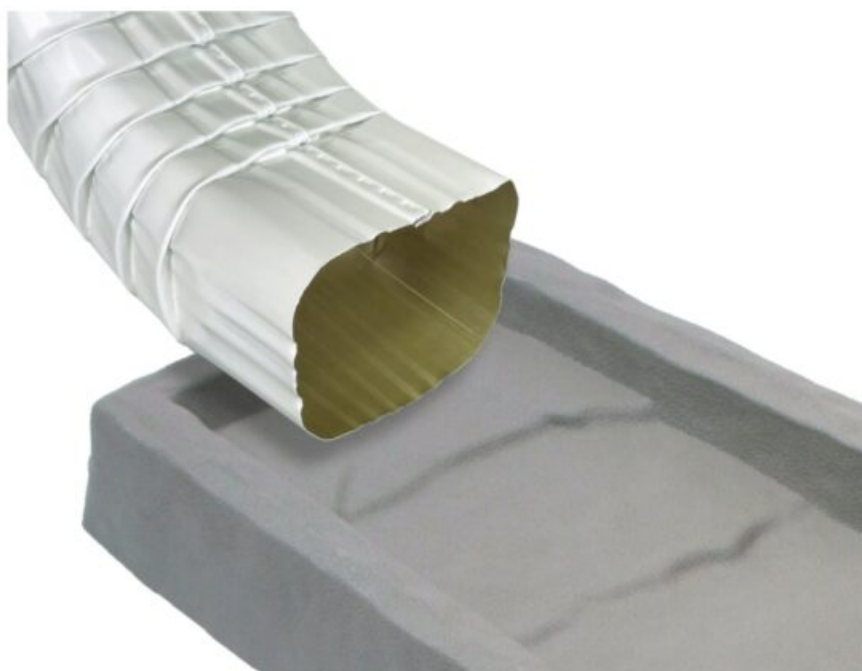
- 1 Dimensions:
- 2 Installation:
- 3 Documents / Resources
 - 3.1 References
- 4 Related Posts

Dimensions:



Installation:

Place the splash block underneath the gutter downspout elbow.



Questions/Comments? Email us at: CustomerService@AvonPlastics.com



**MADE IN USA
FROM RECYCLED MATERIALS**



Documents / Resources



[MASTER MARK ROCK FACE Splash Block \[pdf\] Installation Guide](#)

30050c8a-23d4-4104-b4d5-8c7dc5534f9e, ROCK FACE Splash Block, ROCK FACE, Splash Block, Block

References

- [User Manual](#)

[Manuals+](#), [Privacy Policy](#)

This website is an independent publication and is neither affiliated with nor endorsed by any of the trademark owners. The "Bluetooth®" word mark and logos are registered trademarks owned by Bluetooth SIG, Inc. The "Wi-Fi®" word mark and logos are registered trademarks owned by the Wi-Fi Alliance. Any use of these marks on this website does not imply any affiliation with or endorsement.