



Master Lock 5440EURD Bluetooth Key Lock Box User Guide

[Home](#) » [Master Lock](#) » Master Lock 5440EURD Bluetooth Key Lock Box User Guide 



5440EURD/5441EURD Instructions
Key lock box Select Access SMART

Activation Code	Primary Code
-----------------	--------------

For videos, instructions & FAQ's, visit:

<https://www.masterlock.eu/service-and-support/electronic-products>

Contents

- 1 QUICK START – UNLOCK WITH A MOBILE DEVICE
- 2 QUICK START– UNLOCK WITH THE NUMERIC KEYPAD
- 3 BATTERY INSTRUCTIONS – HOW TO REPLACE BATTERY
- 4 BATTERY INSTRUCTIONS – HOW TO UNLOCK WITH AN EXTERNAL BATTERY
- 5 LED KEYPAD INDICATORS
- 6 IMPORTANT INFORMATION
- 7 Documents / Resources
 - 7.1 References
- 8 Related Posts

QUICK START – UNLOCK WITH A MOBILE DEVICE

1. Remove the Select Access SMART & instructions from the package.
2. Follow the instructions below to open the Select Access door. Then remove only the 4 screws in the corners from the inside of the back of the lockbox, to remove from the

packaging.

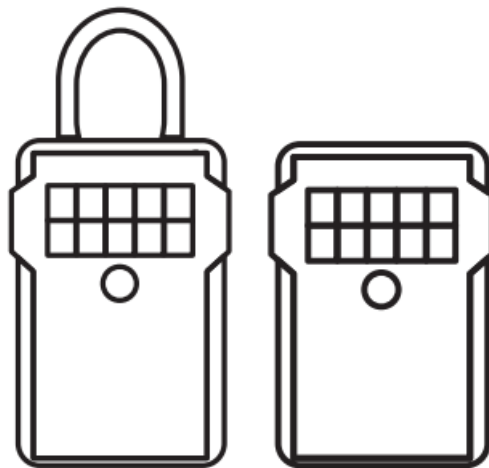
3. On your Android or iOS mobile device, visit the app store to download the FREE Master Lock Vault Home app.
To check your device compatibility, visit:

<https://www.masterlock.com/service-and-support/electronic-products/vault-home-locks>



(Note: There are two Master Lock Vault apps. Download the Master Lock Vault Home version.)

4. Follow prompts to log into, or create, a Master Lock Vault account.
5. In the Master Lock Vault Home app, touch Add a Lock (+).
6. Enter the ACTIVATION CODE shown above to register the Select Access SMART & follow instructions to connect the mobile device to lock. Once your key lockbox is registered, it will display in the Lock List inside the app. Touch the name of the key lock box to access the lock details and manage additional settings, view the access history, or share access with guests. Once the ACTIVATION CODE has been entered, the “Try Me! Mode (0,0,0,0,0) will no longer work.

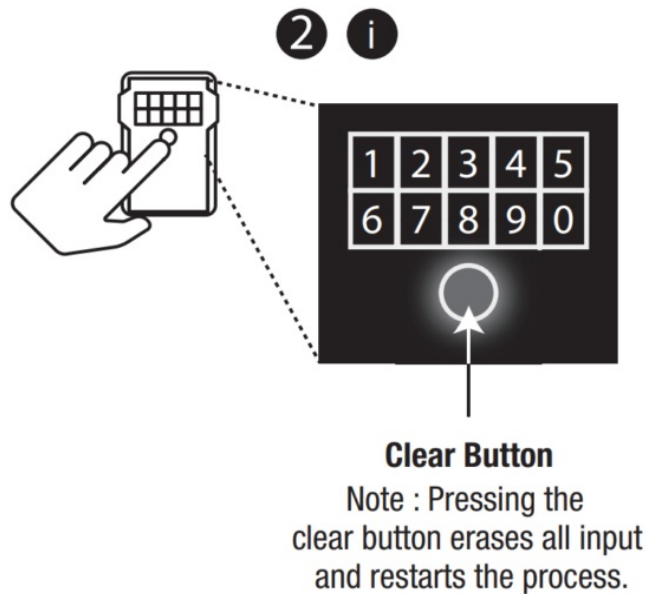


5440EURD

5441EURD

7. By default, your Select Access SMART is in Touch Unlock mode. Touch any button on the lockbox keypad to wake and unlock it. When the light turns green, open it within 5 seconds or it will relock. The green light means the door can now be opened by pulling on it.

(Note: You can change the phone-to-lock box communication range in the app settings, by using the Device Calibration feature.)

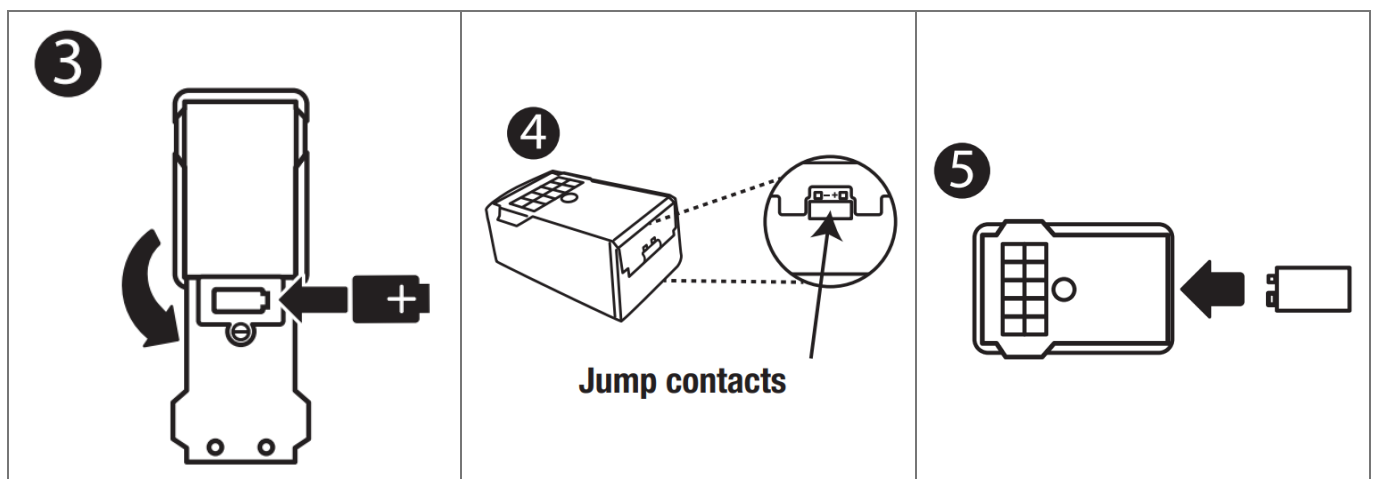


QUICK START– UNLOCK WITH THE NUMERIC KEYPAD

1. Remove the Select Access SMART & instructions from the package.
2. Follow the instructions below to open the Select Access door. Then remove only the 4 screws in the corners from the inside of the back of the lockbox, to remove from the packaging.
3. Enter the PRIMARY CODE, located in the black box above, into the Select Access SMART keypad.
(Note: Do not pull on the door when entering the code and do not press the clear button. (see illustration 2).
Entering the Primary Code will erase the Try Me code.)
4. When the light of the Select Access SMART turns green, open it within 5 seconds or it will relock.

BATTERY INSTRUCTIONS – HOW TO REPLACE BATTERY

1. A low battery will be indicated through an email notification, the app, or by a yellow light on the Select Access SMART.
2. Unlock & open the Select Access SMART.
3. Using a Flat Head screwdriver, open the battery compartment door and remove the battery.
4. Install a new CR123A battery, making sure to position the battery with positive and negative sides facing the proper direction as indicated on the door and battery compartment (See illustration 3).
5. Close the battery door and tighten the screw.



BATTERY INSTRUCTIONS – HOW TO UNLOCK WITH AN EXTERNAL BATTERY

1. A low battery will be indicated through an email notification, the app, or by a yellow light on the Select Access SMART.
2. Locate the battery jump contacts on the bottom of the Select Access SMART (see illustration 4).
3. Hold a new 9-volt battery underneath the product with the positive (+) and negative (-) terminals pressed against the jump contacts (see illustration 5), in the orientation indicated on the bottom of the lockbox (see illustration 4).
4. While holding the battery in place, and with an authorized mobile device within range of the lockbox and in Touch Unlock mode, press any keypad button on the lockbox. If the lockbox does not unlock, or an authorized mobile device is not available, enter the Primary Code on the lockbox keypad; while holding the 9-volt battery in place.
5. When the lockbox is opened, install a new CR123A battery. Please note that after installing a new battery, the low battery icon will no longer display in the app after the lockbox and app communicate with each other. However, it will take between 2 and 72 hours for the yellow LED to stop displaying on the lock itself.

LED KEYPAD INDICATORS

BLUE	GREEN	YELLOW	RED
Locked, Communicating, or Keypad Entry	Open or Unlocked & Waiting To Be Opened	Low Battery	Invalid Keypad Entry

IMPORTANT INFORMATION

Please find the Select Access SMART instructions in other languages on www.masterlock.eu



WEEE Figure 1: In the European Union (EU), this symbol means that electrical and electronic equipment should not be disposed of with general household waste. Please contact your dealer, supplier, or local recycling authority for further details regarding the appropriate disposal of this product and your nearest designated collection facility.



Hereby, Master Lock Company LLC declares that the radio equipment type 5440EURD/5441EURD is in compliance with Directive 2014/53/EU.

The full text of the EU declaration of conformity is available at the following internet address: www.masterlock.eu

This padlock and its operating software are subject to U.S. Export Administration Regulation controls. The padlock is subject to ECCN 5A992 and the downloadable app is subject to ECCN 5D992 as mass-market software. Exporting this padlock and/or its software contrary to U.S. law is prohibited.

This device complies with Part 15 of the FCC Rules. Operation is subject to the following two conditions: (1) this device may not cause harmful interference, and (2) this device must accept any interference received, including interference that may cause undesired operation.


FCC Part 15.21 Statement. Changes or modifications made to this equipment not expressly approved by the party responsible for compliance could void the user's authority to operate the equipment.

This device operates in the frequency range(s) 2400MHz – 2483.5MHz with a maximum Effective Isotropic

Radiated Power (EIRP) of 0dBm.

Industry Canada RSS Compliance Statement:


Notice: This device complies with Industry Canada's license-exempt RSS standard(s). Operation is subject to the following two conditions: (1) this device may not cause interference, and (2) this device must accept any interference including interference that may cause undesired operation of the device.

	IC: 2676A-5440	FCC ID MZR 5440
	IC: 2676A-5441	FCC ID MZR 5441

© 2020 – Marque Déposée
Master Lock Company LLC
Milwaukee, Wisconsin USA
Master Lock Europe SAS
92 400 Courbevoie, France
mle@master-lock.fr
UK & Ireland: sales_uk@mlock.com
Germany: vertrieb_de@mlock.com
Benelux: mlbenelux@mlock.com
Spain & Portugal: mliberica@mlock.com
www.masterlock.eu

P65174

Documents / Resources

	Master Lock 5440EURD Bluetooth Key Lock Box [pdf] User Guide 5440EURD, 5441EURD, Bluetooth Key Lock Box
---	--

References

- [lock.fr - This website is for sale! - Lock Resources and Information.](#)
- [Master Lock Vault Enterprise Support for Locks | Master Lock](#)
- [Electronic Product Support | Master Lock](#)