



master Easy kvm-tec First Aid Installation Guide

[Home](#) » [master Easy](#) » master Easy kvm-tec First Aid Installation Guide 

Contents

- [1 master Easy kvm-tec First Aid Installation](#)
- [2 Instructions](#)
- [3 ACCESS TO MAIN MENU](#)
- [4 DISPLAYING THE FIRMWARE VERSION](#)
- [5 FEATURES](#)
- [6 FRONTBRIDGING](#)
- [7 BACKBRIDGING](#)
- [8 Documents / Resources](#)
 - [8.1 References](#)
- [9 Related Posts](#)

master
Easy

master Easy kvm-tec First Aid Installation

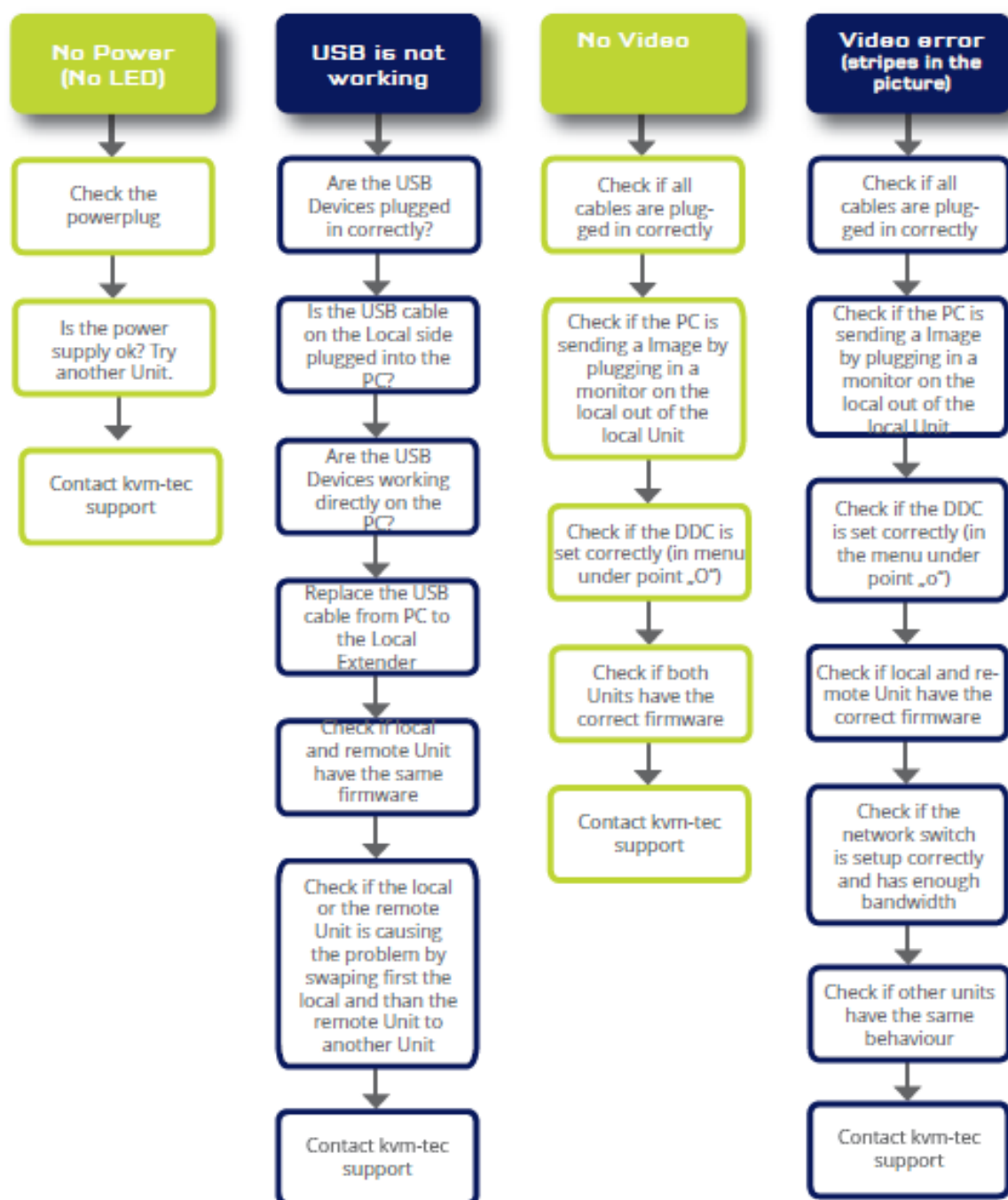


Instructions

V102022



Full HD
over IP



kvm-tec Supportkvm-tec Support

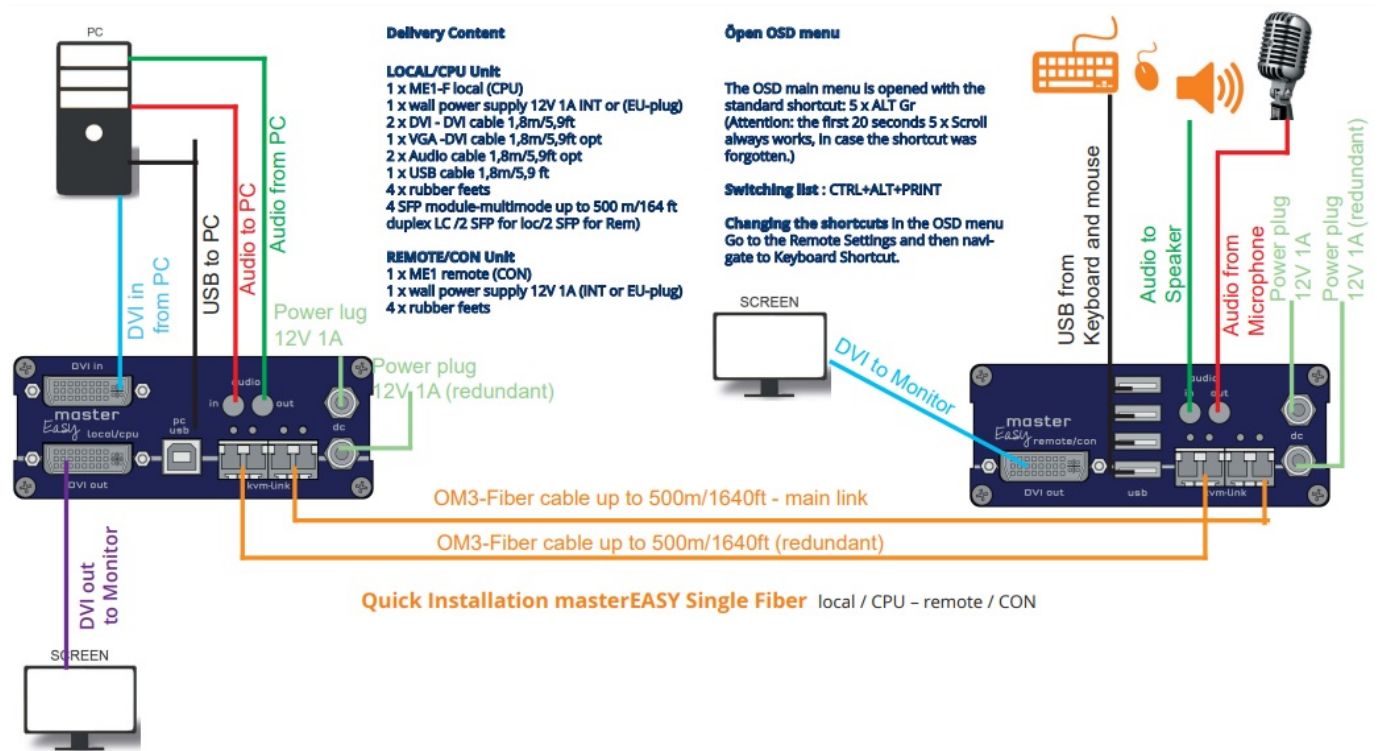
support@kvm-tec.com support@kvm-tec.com

Phone: +43 2253 8Phone: +43 2253 8191912 – 3012 – 30



We are here for you to answer your questions about installation?

Manual download www.kvm-tec.com or kvm-tec Installationchannel on our homepage personally +43 2253 81912



1. Connect the CON / Remote and the CPU / Local Unit to the included 12V 1A power supply.
2. Now connect the USB cable to a USB port on your PC and connect the other end of the USB cable to the CPU / Local Unit. Connect keyboard and mouse to the CON / Remote Unit.
3. Connect the CPU / Local and the CON / Remote Unit with a network cable.
4. Now connect the DVI cable to the DVI socket of the PC and the other end to the DVI socket of the CPU / Local Unit (PC-in).
5. Then connect the monitor with the DVI cable to the CON / Remote Unit.
6. Opt: Connect PC audio/out with the audio cable to local audio/in. Connect audio/out via the audio cable
7. Almost done Opt: Connect the audio cable local audio/out to the PC audio/in and remote audio/out with audio cable to the microphone
8. If you are using a switch: Connect all endpoints to the switch. Ensure that all connections have a bandwidth of 1Gbit/sec. For video sharing the network has to support IGMP snooping (Switch Layer3)

HAVE FUN – your kvm-tec Extender is now in use for many years (MTBF approx 10 years)

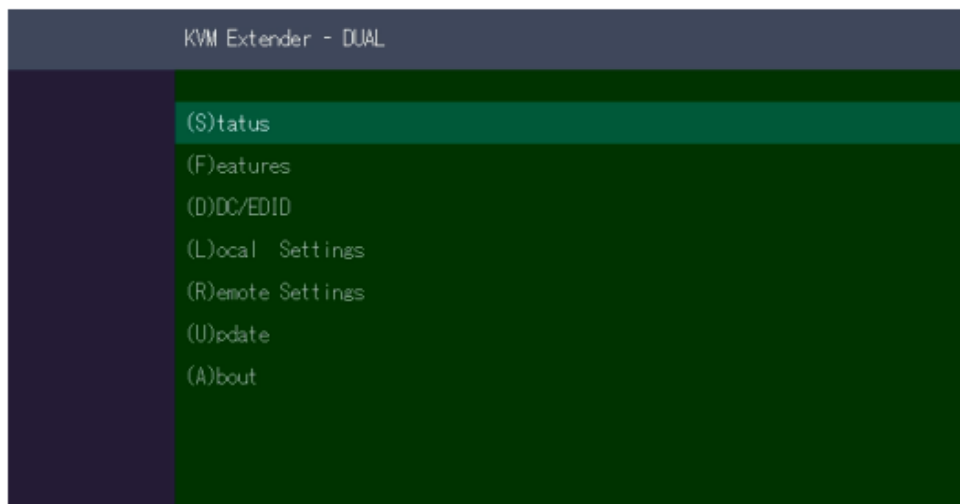
ACCESS TO MAIN MENU

Use the monitor and the keyboard to access the main menu

Access to the main menu.

1. make sure the extenders, monitors, and computers are turned on.

2. Press the Scroll Lock button five times quickly. The main menu and an overview of the submenus are displayed.
3. To enter a submenu, press the corresponding key.



Main menu Short Cuts :

- S Status Overview
- U Update Flash FW
- F Features Overview
- D DDC Option
- L Local Settings
- R Remote Settings
- A About Overview
- Key „Esc“

Menu Status / current Status Firmware update

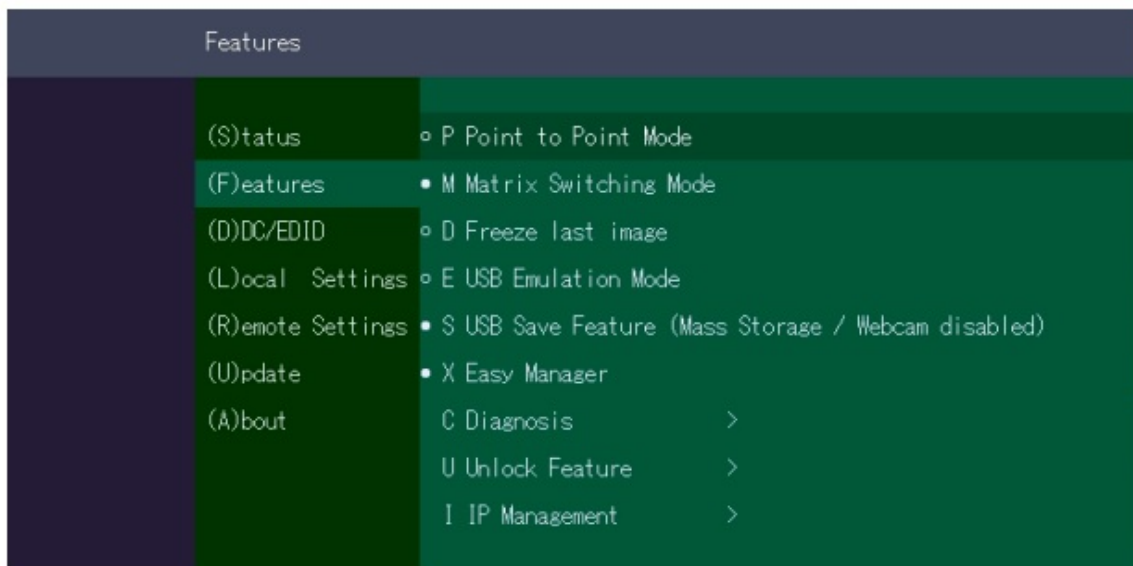
- Settings Features
- DDC Option Fix
- Settings Local
- Settings Remote
- Exit

DISPLAYING THE FIRMWARE VERSION

Make sure that the main menu is open. Under „A“ – About the currently installed firmware version of the remote (CON) and local (CPU) extender is displayed.

FEATURES

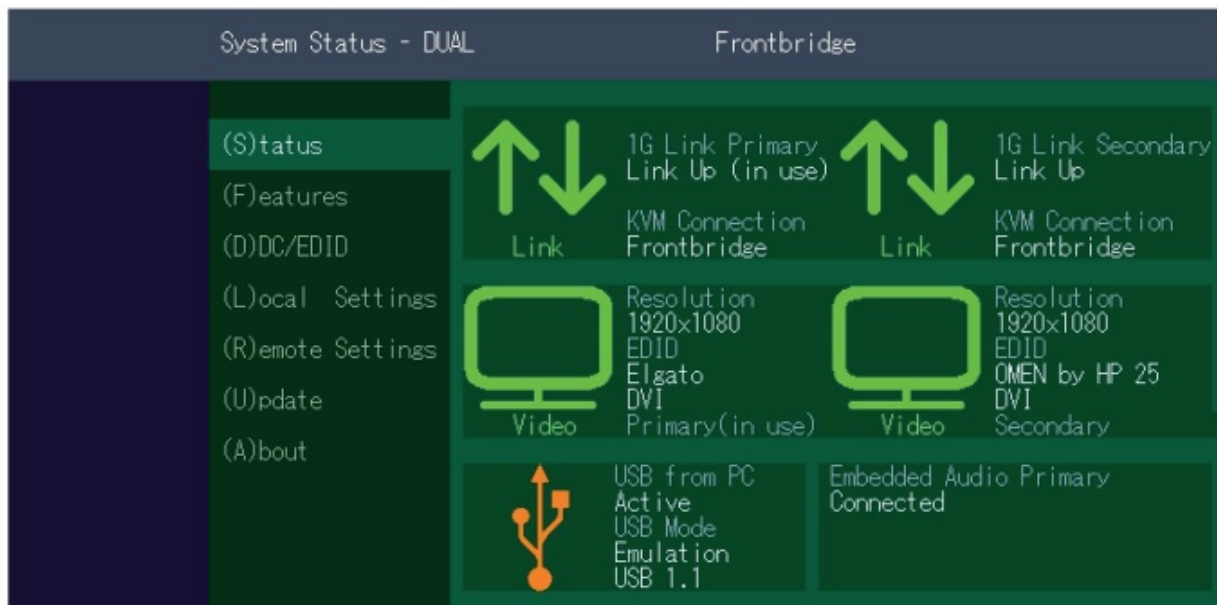
Press the F key to enter the Features menu. Switching mode is set by default



FRONTBRIDGING

HARDWARE: 1 X DUAL LOCAL + 2 X SINGLE REMOTE




The „Status Menu“ displays the current status of the extender connection. The menu shows the information about the connection, the resolution of the video channel and the USB status. The link status shows if a connection is possible. Connected shows if the kvm fi les can currently be transferred. Video and USB show if data is currently being transferred



BACKBRIDGING

HARDWARE: 1 X DUAL LOCAL + 2 X SINGLE REMOTE

The „Status Menu“ displays the current status of the extender connection. The menu shows the information about the connection, the resolution of the video channel and the USB status. The link status shows if a connection is possible. Connected shows if the kvm fi les can currently be transferred. Video and USB show if data is currently being transferred

System Status		Backbridge	
	(S)tatus	 Link	1G Link Primary Link Up
	(F)eatures		KVM Connection Backbridge
	(D)DC/EDID	 Video	Resolution 1920x1080 EDID Elgato HDMI Primary
	(L)ocal Settings		
	(R)emote Settings		USB from PC Active USB Mode Transparent USB 2.0
	(U)pdate		Embedded Audio Primary Connected
	(A)bout		

KVM-TEC

Gewerbepark
Mitterfeld 1 A
2523 Tattendorf
Austria
www.kvm-tec.com

KVM-TEC ASIA

p +9173573 20204
sales.apac@kvm-tec.com

KVM-TEC CHINA

– P + 86 1360 122 8145
chinasales@kvm-tec.com
www.kvm-tec.com

IHSE GmbH

Benzstr.1
88094 Oberteuringen
Germany
www.ihse.com

IHSE USA LLC

1 Corp.Dr.Suite
Cranburry NJ 08512
USA
www.ihseusa.com



IHSE GMBH Asia

158Kallang
Way,#07-13A
349245 Singapore
www.ihse.com

IHSE China Co.,Ltd

Room 814

Documents / Resources

	master Easy kvm-tec First Aid [pdf] Installation Guide kvm-tec First Aid, kvm-tec, First Aid
	master Easy kvm-tec First Aid [pdf] Instruction Manual kvm-tec First Aid, kvm-tec, First Aid

References

- [TEC - Residential and Business Internet, Voice, and Security](#)
- [IHSE - Technology leader made in Germany | IHSE - KVM & Beyond](#)
- [IHSE - KVM -IP KVM - KVM -IHSE](#)
- [Home - IHSE](#)
- [Kvm-tec.com: KVM Extender over IP - Matrix Switching Systeme](#)