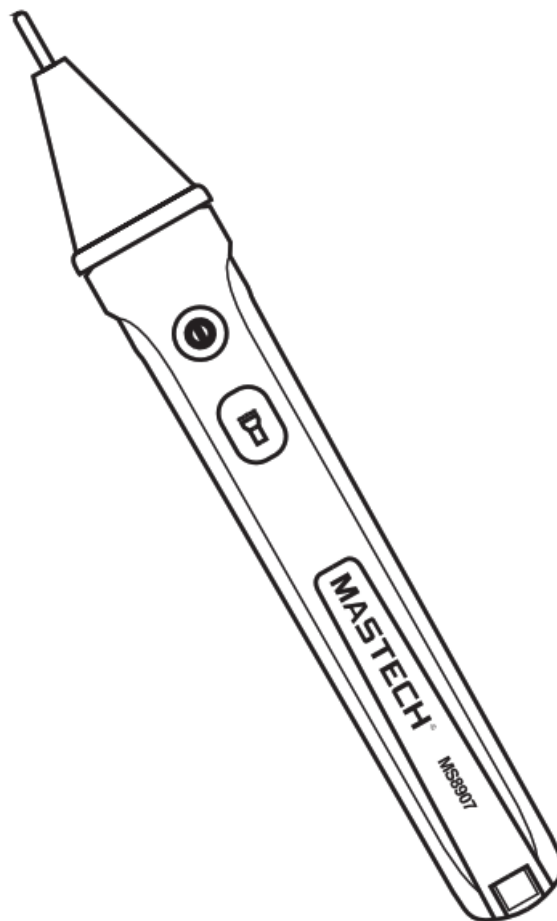




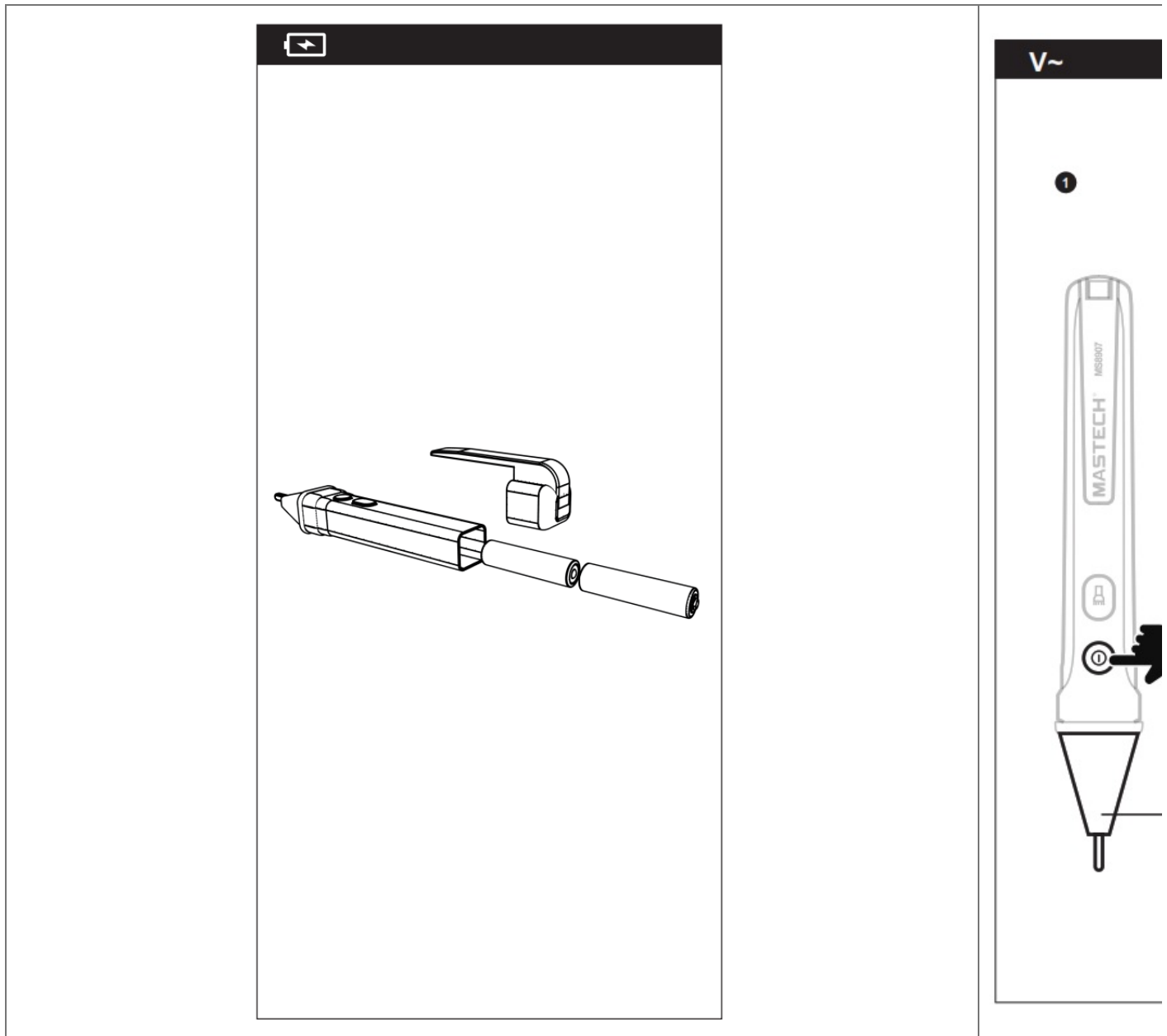
MASTECH MS8907 Non Contact AC Voltage Detector User Guide

[Home](#) » [MASTECH](#) » MASTECH MS8907 Non Contact AC Voltage Detector User Guide

MASTECH[®] Quick Start Guide



MS8907
Non Contact AC Voltage Detector



Special attention should be paid when using the test and measurement instrument because improper usage may cause electric shock and damage the equipment.

- Use proper measurement category (CAT), voltage, and amperage rated probes, test leads, and adapters for the measurement.
- Do not use or store the device around explosive gas, vapor, or under high temperature and humidity.
- When handling the test probes and crocodile clips, keep your fingers behind the physical guard.
- Examine the measuring test leads (if present) before use. Any element of which the insulation deteriorates (even partially), replace them with proper functional test leads.
- Connect the common test lead before the live test lead and remove the live test lead before the common test lead.
- Before measuring current, make sure the instrument fuses available and disconnect the power supply to the circuit test
- Remove the batteries if the device is not used for an extended period of time, or if stored in temperatures above

45 °C. If the batteries are not removed, battery leakage can damage the device.

Contents [[hide](#)

- [1 Contents](#)
- [2 Specifications](#)
- [3 Documents / Resources](#)
- [4 Related Posts](#)

Contents



Specifications

Non-Contact AC Voltage Detector (AC Voltage Range)

Frequency 50Hz~60Hz



USA

MGL AMERICA, INC.
2810 Coliseum Centre Drive,
Ste. 100 Charlotte,
North Carolina 28217 USA
Tel: +1 833-533-5899
Email: cs.na@mgl-intl.com



<http://www.mastech-group.com/support.php?n=0>



Documents / Resources



[MASTECH MS8907 Non Contact AC Voltage Detector](#) [pdf] User Guide
MS8907, Non Contact AC Voltage Detector, MS8907 Non Contact AC Voltage Detector