
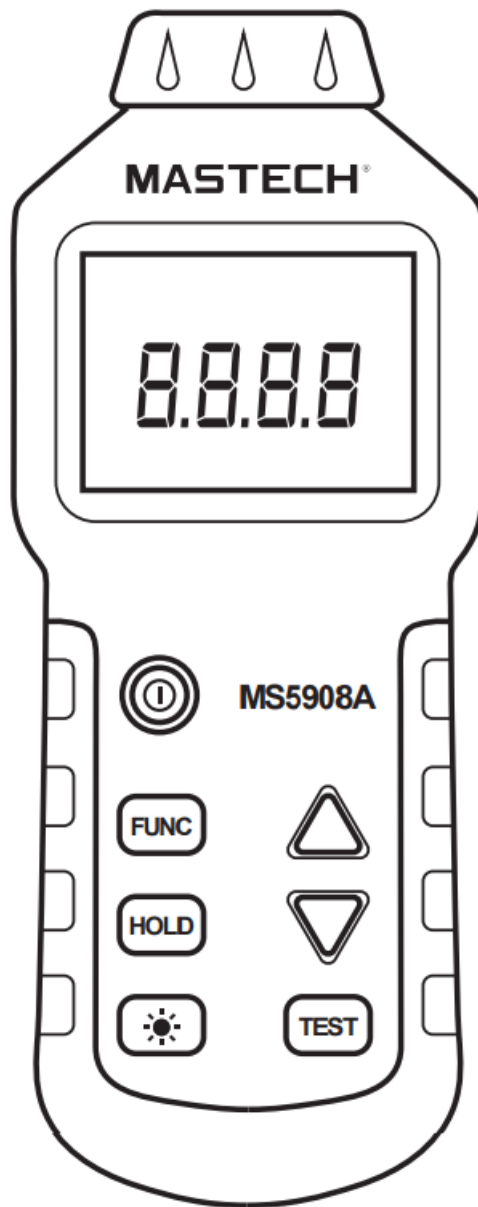




MASTECH MS5908A Circuit Analyzer User Guide

[Home](#) » [MASTECH](#) » MASTECH MS5908A Circuit Analyzer User Guide 

MASTECH®



700019239 June 2021 Rev. 1

Specifications are subject to change without notification.

Quick Start Guide

MS5908A

Circuit Analyzer



The special attention should be paid when using the test and measurement instrument because improper usage may cause electric shock and damage the equipment.

- Use proper measurement category (CAT), voltage, and amperage rated probes, test leads, and adapters for the measurement.
- Do not use or store the device around explosive gas, vapor, or under high temperature and humidity.
- When handling the test probes and crocodile clips, keep your fingers behind the physical guard.
- Examine the measuring test leads (if present) before use. Any element of which the insulation deteriorates (even partially), replace them with proper functional test leads.
- Connect the common test lead before the live test lead and remove the live test lead before the common test lead.
- Before measuring current, make sure the instrument fuses available and disconnect the power supply to the circuit test
- Remove the batteries if the device is not used for an extended period of time, or if stored in temperatures above 45 °C. If the batteries are not removed, battery leakage can damage the device.

Contents

- [1 Contents](#)
- [2 Specifications](#)
- [3 Measurement](#)
- [4 Documents / Resources](#)
- [5 Related Posts](#)

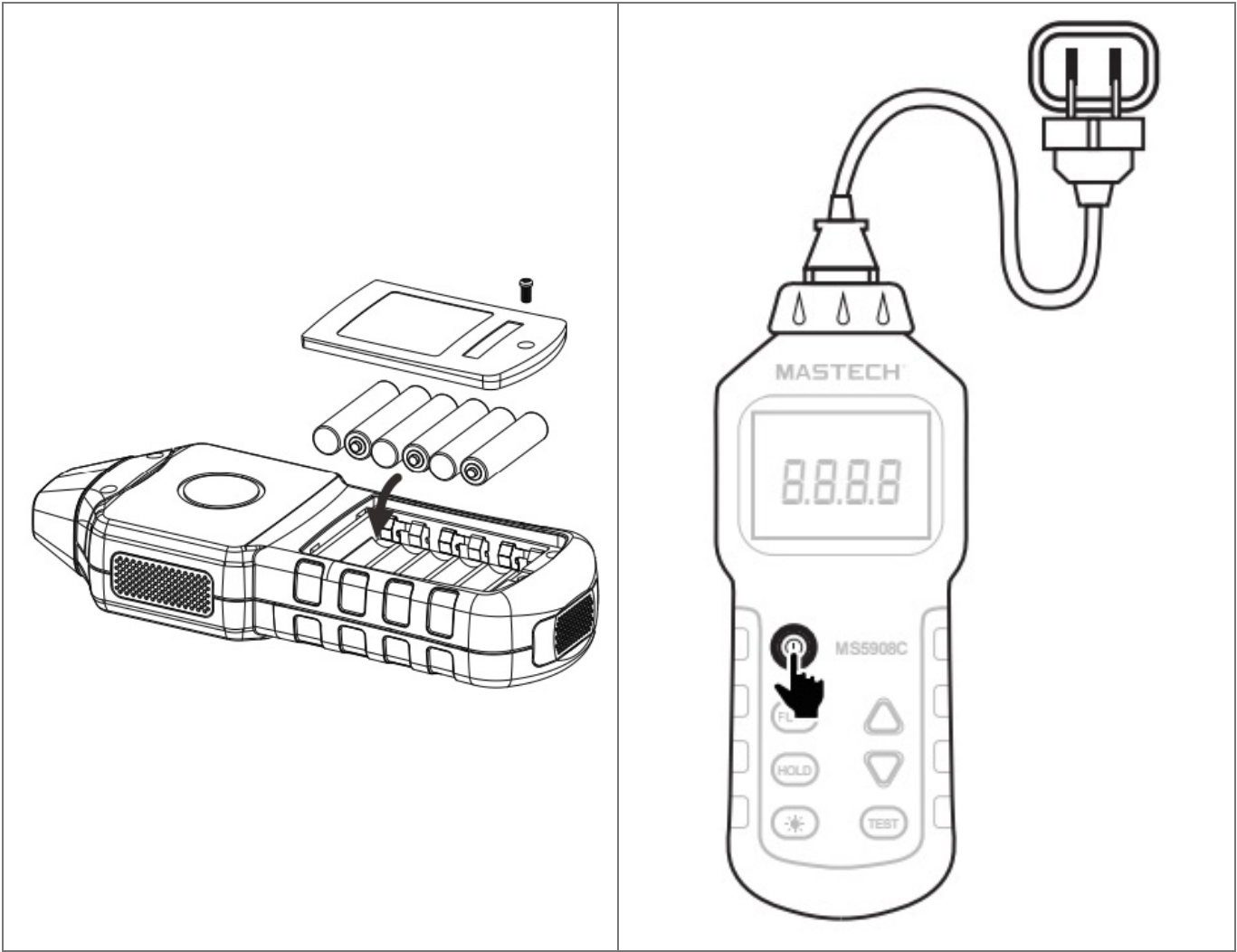
Contents



Specifications

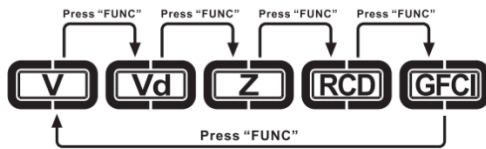
	Range	Resolution
Line Voltage	85.0~135.0V	0.1V
Peak Line Voltage	120.0~190.0V	0.1V
Voltage With Loading Equipment	10.0~135.0V	0.1V
Line Frequency	0.00~3.00Ω >3.00Ω	0.01Ω 0.01Ω
Impedance-live and Neutral & Earth	0.0~10.0V	0.1V
Neutral-Ground Voltage	1ms~6.5S	1mS
RCD Trip Time	30mA~37mA	0.1mA
RCD Trip Current	1ms~6.5S	1mS
GFCI Trip Time	6mA~9mA	0.1mA

GFCI Trip Current	6mA~9mA	0.1mA	±(
Voltage Drop	0.1~99.9%	0.10%	±(;
Voltage Drop Load Current	12/15/20A		



Measurement

1

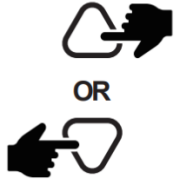


Function

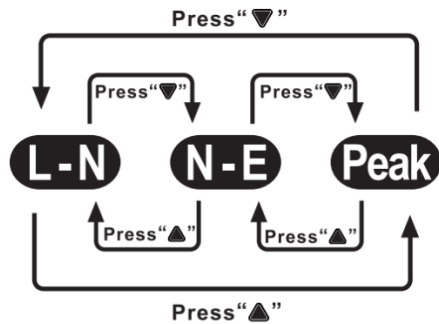
2



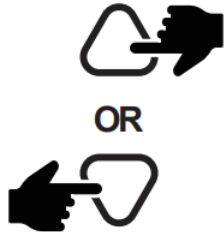
TEST



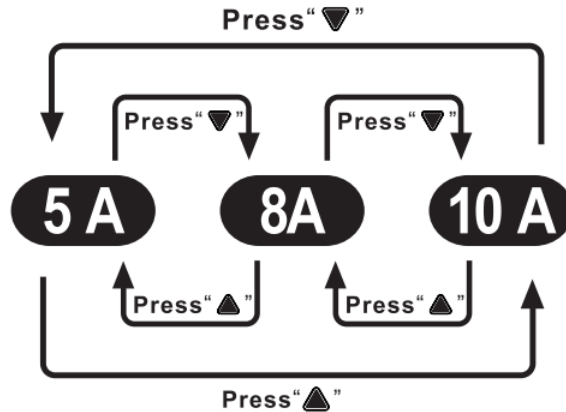
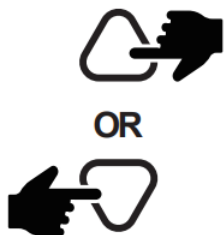
OR



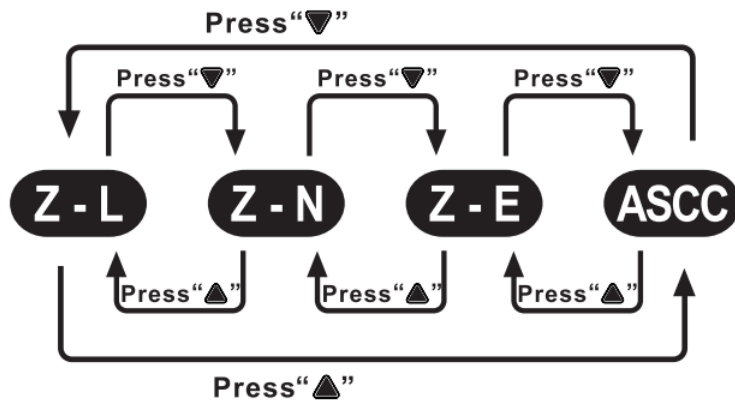
Voltage(V)



OR

Voltage (V_d)

OR



Impedance(Z)

MGL[®]
Incorporated with MGL

MGL AMERICA, INC.
2810 Coliseum Centre Drive,
Ste. 100 Charlotte,
North Carolina 28217 USA
Tel: +1 833-533-5899
Email: cs.na@mgl-intl.com

SKU Number: MS5908ACBGLO



<http://www.mastech-group.com/support.php?n=0>

CAT III 300V

1 YEAR

LIMITED WARRANTY



Documents / Resources



[MASTECH MS5908A Circuit Analyzer](#) [pdf] User Guide
MS5908A, Circuit Analyzer, MS5908A Circuit Analyzer

[Manuals+](#).