

MASTECH MS5901 Motor and Phase Rotation Indicator User Guide

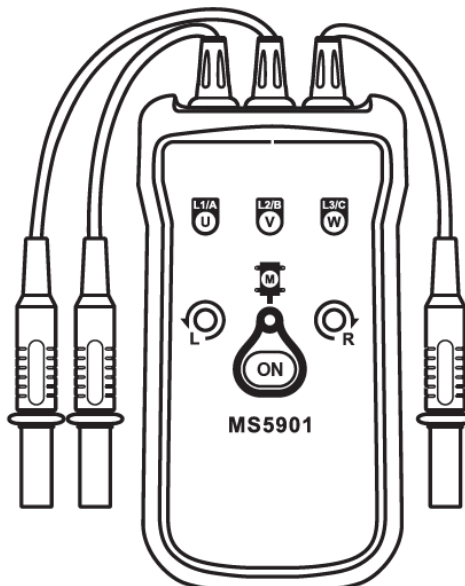
[Home](#) » [MASTECH](#) » MASTECH MS5901 Motor and Phase Rotation Indicator User Guide 

Contents

- [1 MASTECH MS5901 Motor and Phase Rotation Indicator](#)
- [2 overview](#)
- [3 Contents](#)
- [4 Specifications](#)
- [5 Our Products](#)
- [6 Documents / Resources](#)
- [7 Related Posts](#)

MASTECH®

MASTECH MS5901 Motor and Phase Rotation Indicator



overview

Special attention should be paid when using the test and measurement instrument because improper usage may cause electric shock and damage the equipment.

- Use proper measurement category (CAT), voltage, and amperage-rated probes, test leads, and adapters for the measurement.
- Do not use or store the device around explosive gas, vapor, or under high temperature and humidity.
- When handling the test probes and crocodile clips, keep your fingers behind the physical guard.
- Examine the measuring test leads (if present) before use. Any element of which the insulation deteriorates (even partially), replace them with proper functional test leads.
- Connect the common test lead before the live test lead and remove the live test lead before the common test lead.
- Before measuring current, make sure the instrument fuses available and disconnect the power supply to the circuit test
- Remove the batteries if the device is not used for an extended period of time, or if stored in temperatures above 45 °C. If the batteries are not removed, battery leakage can damage the device.

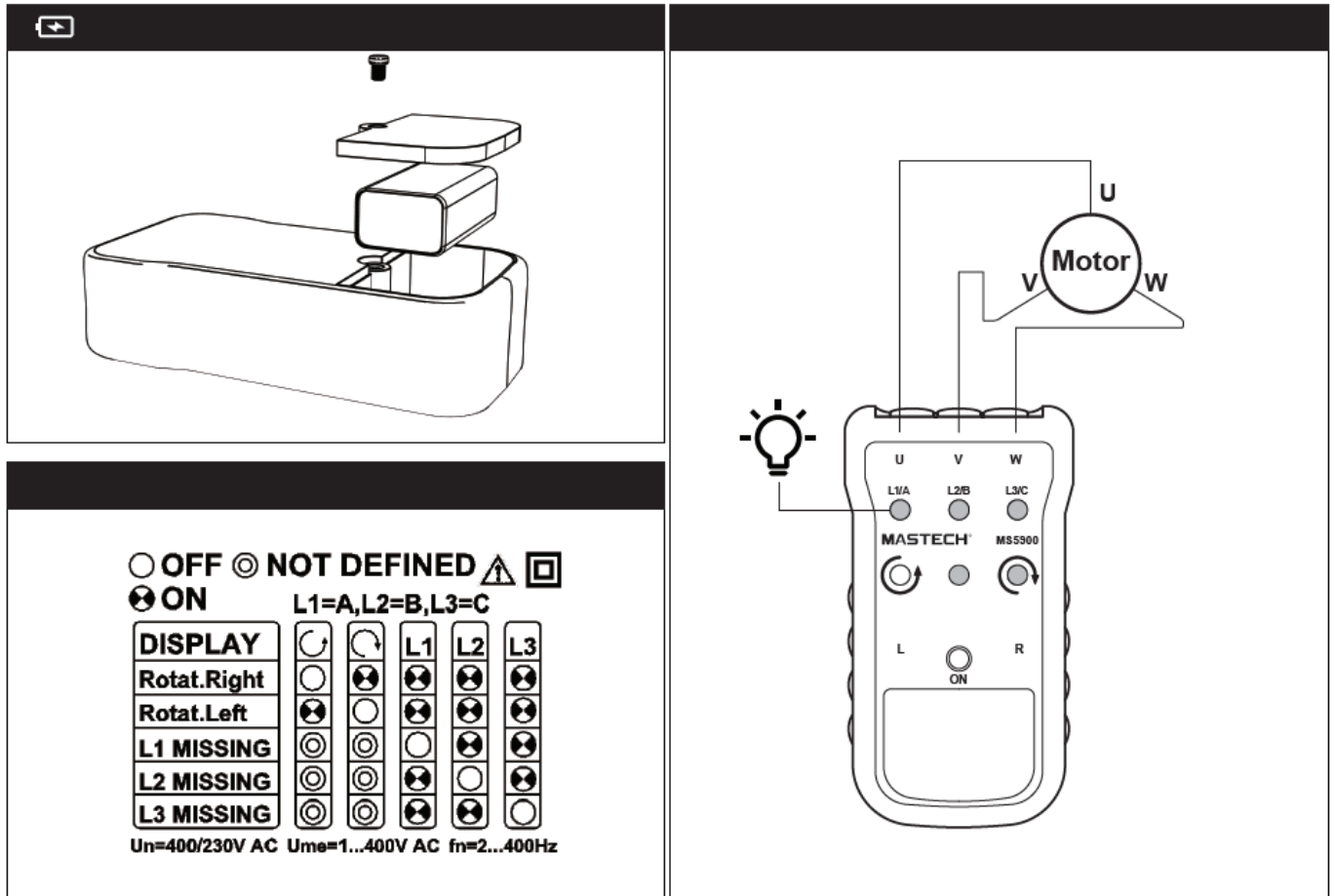
Contents



Specifications

Nominal Voltage Rotary Direction	1~400V AC
Nominal Voltage Phase Indication	120~400V AC
Hz	2~400Hz
Test Currents (In per phase)	Less than 3.5 mA

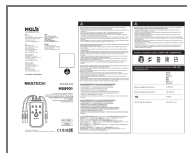
Our Products



USA

- **MGL AMERICA, INC.**
- **2810** Coliseum Centre Drive,
- **Ste. 100** Charlotte,
- **North Carolina 28217** USA
- **Tel:** +1 833-533-5899
- **Email:** cs.na@mgl-intl.com

Documents / Resources



[MASTECH MS5901 Motor and Phase Rotation Indicator](#) [pdf] User Guide
MS5901 Motor and Phase Rotation Indicator, MS5901, Motor and Phase Rotation Indicator