



Martin Jerry WiFi Connection User Manual

[Home](#) » [Martin Jerry](#) » Martin Jerry WiFi Connection User Manual 

Martin Jerry WiFi Connection User Manual



Contents

- [1 READ HERE FIRST !!!](#)
- [2 Video Demo of this Manual](#)
- [3 Download Smart Life App](#)
- [4 Set the Switch to Pairing Mode](#)
- [5 Pair the switch on App](#)
- [6 AP mode wifi Connection](#)
- [7 Documents / Resources](#)
 - [7.1 References](#)
- [8 Related Posts](#)

READ HERE FIRST !!!

1. The switch must work well manually after installation. If not, go back to the wiring step as below.
2. Single Pole US-SD-KN01 ([click here](#)) | 3-way US-STD-KN01 ([click here](#)).
3. WiFi router should be 2.4G WiFi. CANNOT support 5G (802.11av).
 - If you are using the dual band wifi router, please set a separate SSID for the 2.4G.
 - If you are using google wifi, which you cannot set a name for 2.4G, please stay far enough from the wifi router until your phone indicates 2.4G wifi connected.

Video Demo of this Manual

<https://www.youtube.com/watch?v=JGUM-pCfO7s>

Download Smart Life App

Confirm that you have downloaded the right Smart Life App (Same Logo as the right side). If not, download it from the links

- **iPhone:**

https://itunes.apple.com/us/app/smart-life-smart-living/id1115101477_mt=8

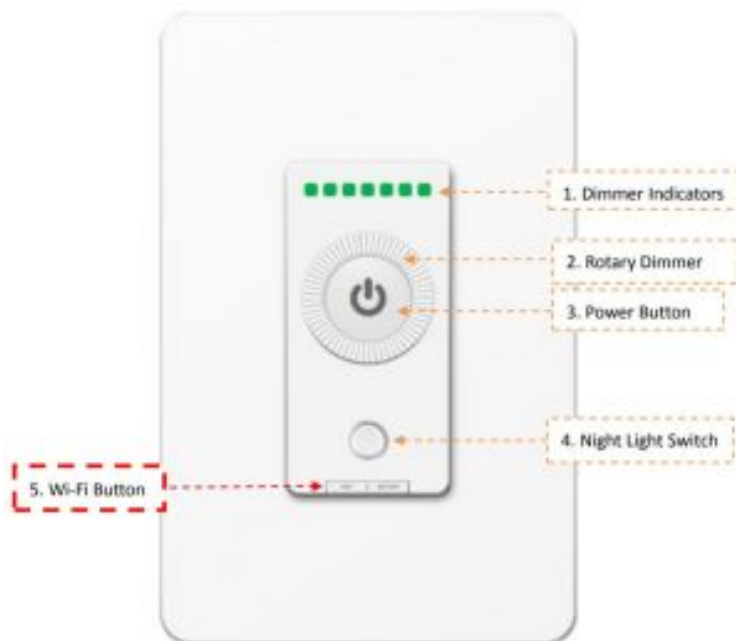
- **Android:**

https://play.google.com/store/apps/details?id=com.tuya.smartlife&hl=en_US



Set the Switch to Pairing Mode

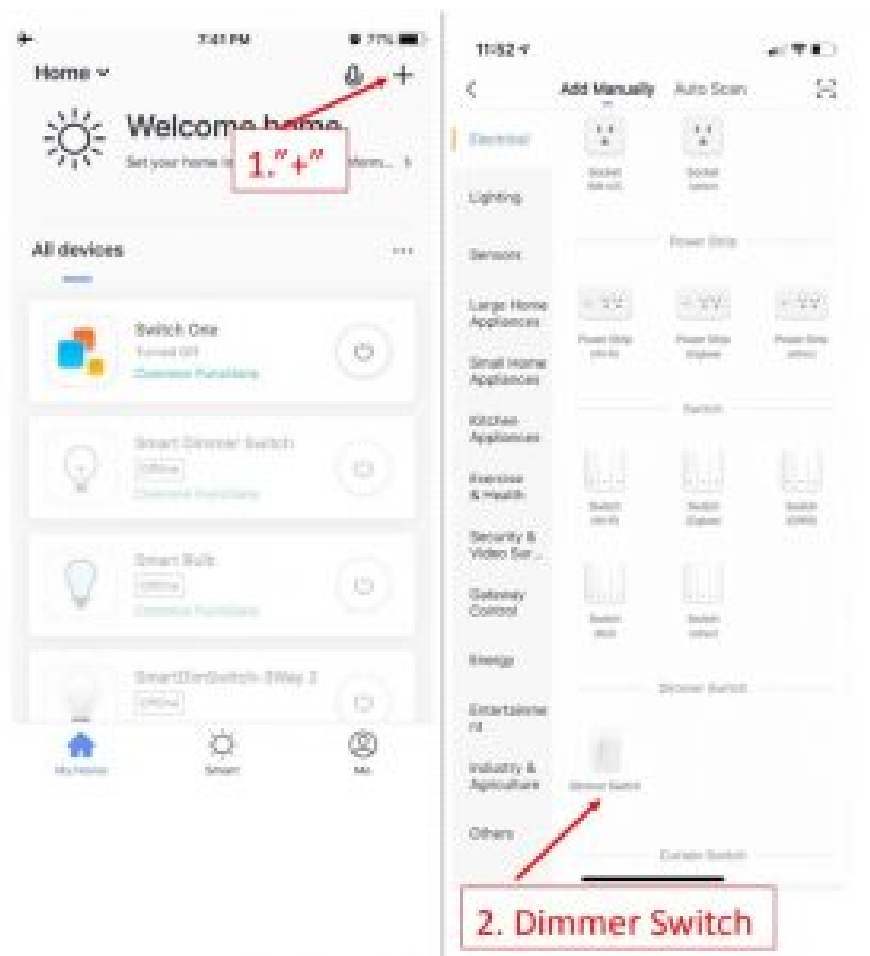
2.1. After wiring, you will see the indicators flash in **RED** on the switch. If not, press the Wi-Fi Button.



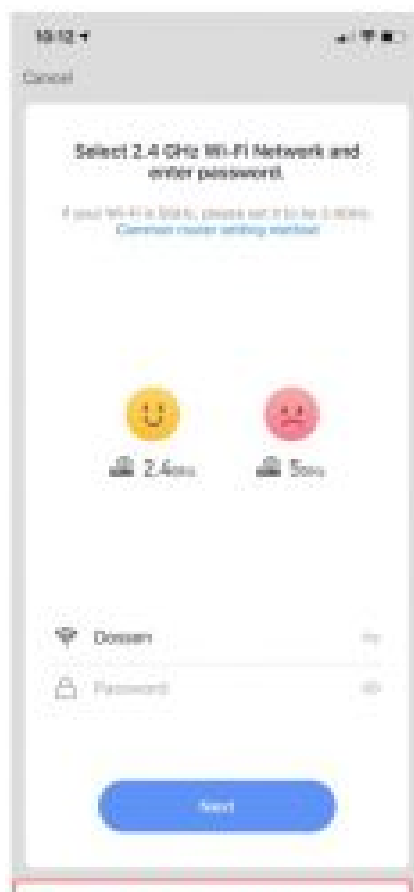
Tech support

<https://www.martinjerry.com/support>

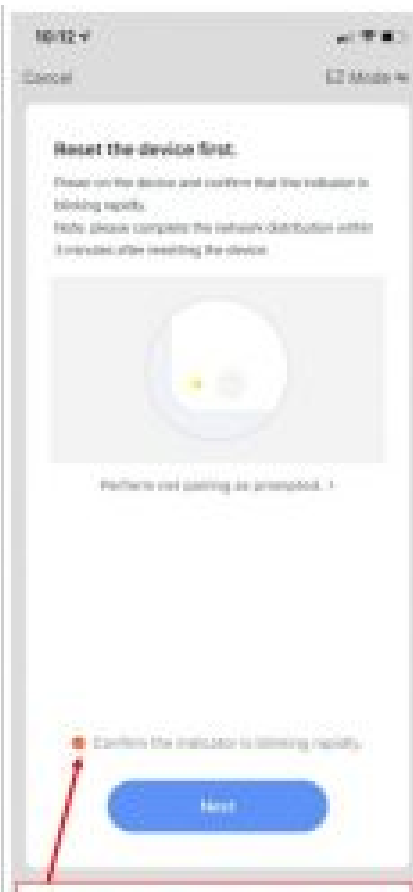
Pair the switch on App



AP mode wifi Connection



3. Input the password of your home WiFi (Must be 2.4G)



4. Indicator on switch is flashing quickly



If the above pairing method fails several times,

Please go to the AP mode mentioned in coming pages

Video Demo:



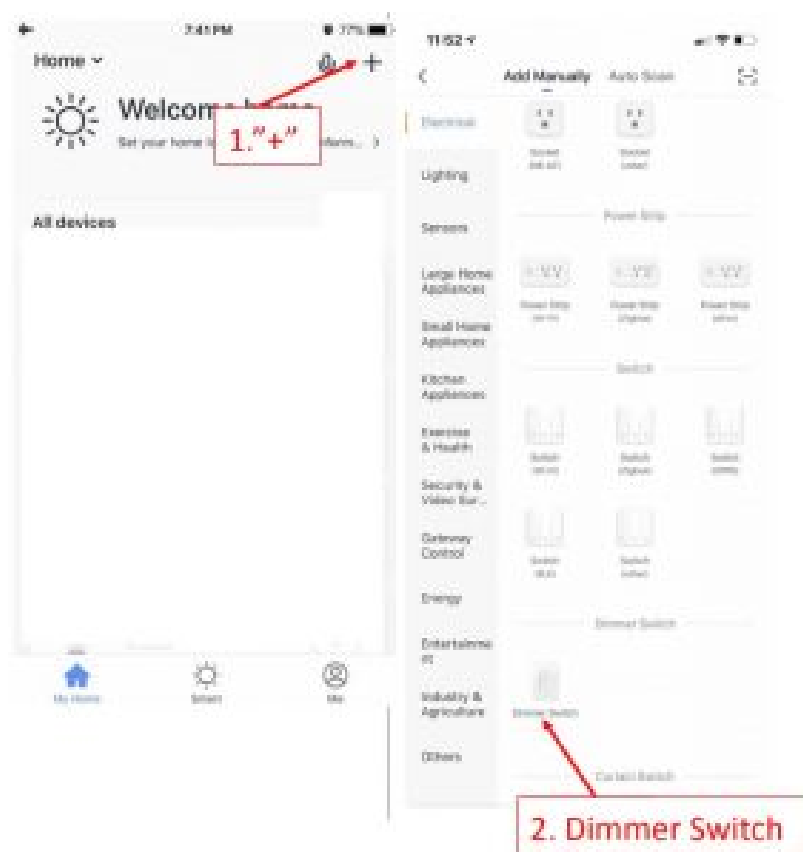
Video 2 – AP mode Wi-Fi connection

- <https://www.youtube.com/watch?v=dXEkDysJCc>

Step 1: Set the switch to AP mode

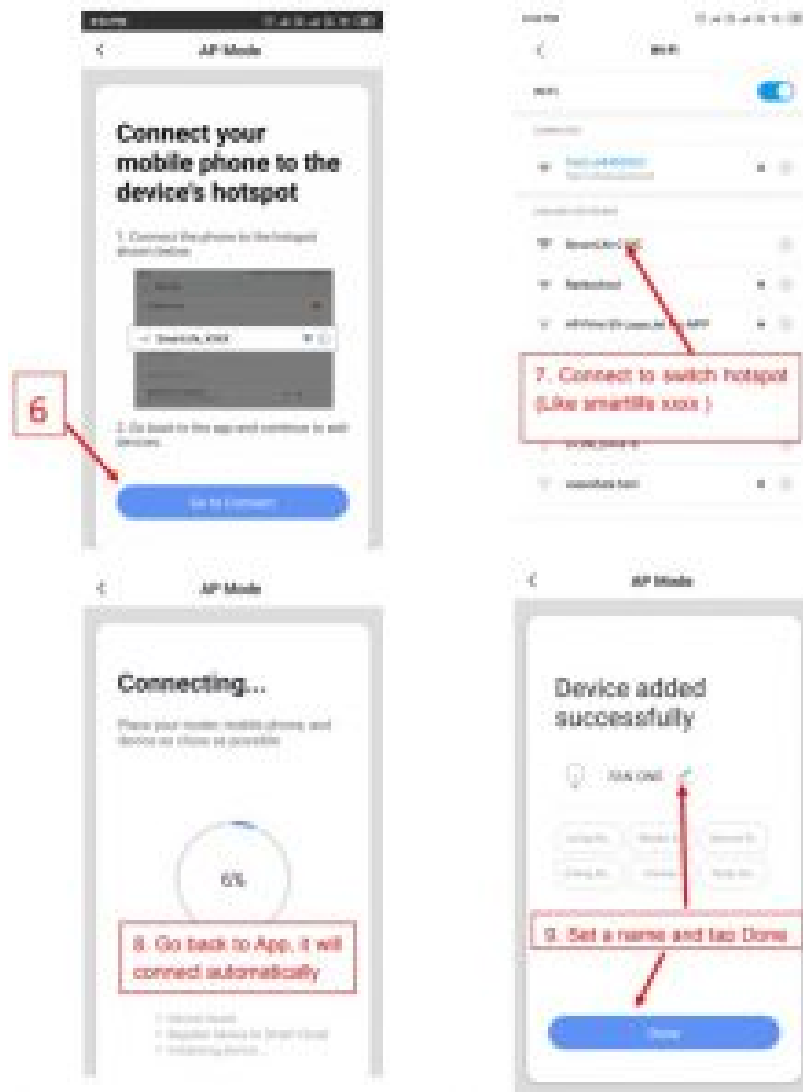
1. Press and hold the power button for 5-8s until the indicator blinks quickly.
2. Press and hold the power button for 5-8s until the indicator blinks slowly.

Step 2: Pair the switch on SmartLife App (AP mode)





Then, Connect the Hotspot from the Switch —> Back to App for pairing.



Documents / Resources

	<p>Martin Jerry WiFi Connection [pdf] User Manual WiFi Connection, US-SD-KN01, US-STD-KN01</p>
--	--

References

- [Smart Life - Smart Living on the App Store](#)
- [Smart Life - Smart Living - Apps on Google Play](#)
- [SUPPORT | martinjerry](#)
- [7.WiFi connection - AP mode - YouTube](#)
- [6.WiFi connection - EZ mode - YouTube](#)