



Martin Jerry US-STD-KN01 3Way Smart Dimmer Switch User Manual

[Home](#) » [Martin Jerry](#) » Martin Jerry US-STD-KN01 3Way Smart Dimmer Switch User Manual 



Contents

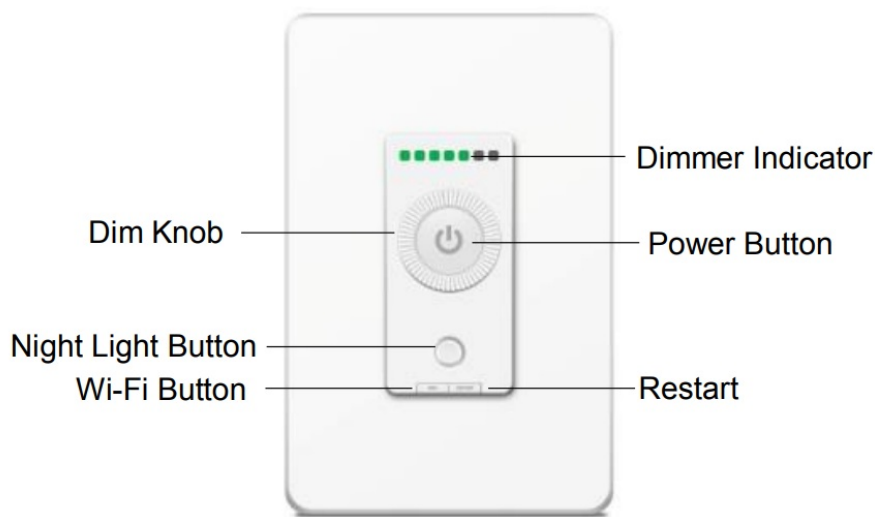
- [1 Part 1: General](#)
- [2 Specification](#)
- [3 Part 2: Installation and Wire Connection](#)
- [4 FQA:](#)
- [5 FCC Warning:](#)
- [6 Documents / Resources](#)
- [7 Related Posts](#)

Part 1: General

Specification

Item	Description
Product Name	3Way Smart Dimmer Switch
Model	US-STD-KN01
Color	White
Voltage	100V-240VAC
Frequency	50-60Hz
Wattage	150W (LED)

1.2. Main Features



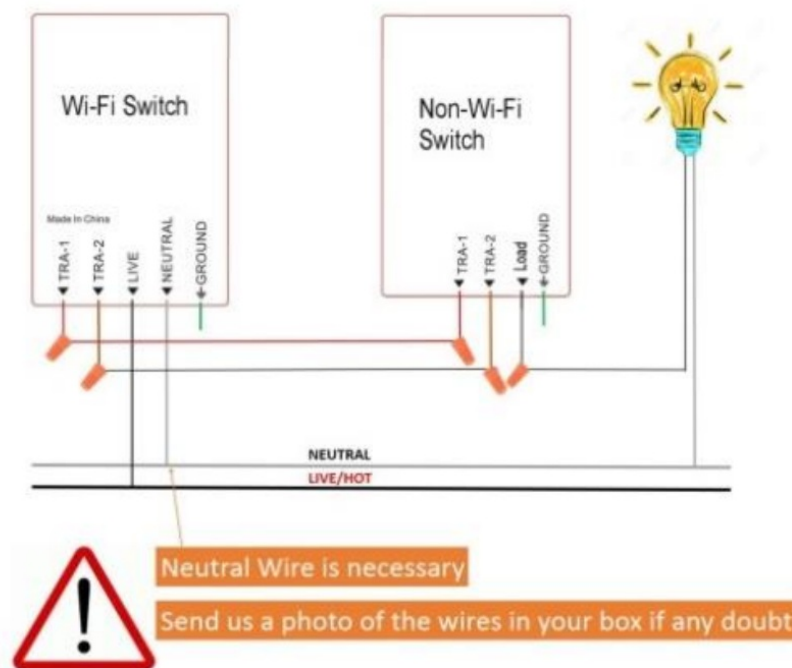
- Works with Alexa & Google Assistant for voice control
- ONLY compatible with 2.4G Wi-Fi, DO NOT use it under 5GHz
- FREE iOS and Android App is available to control it anywhere
- Set schedule and timing to automatically turn on/off
- manually turn on/off the switch by the Main Button
- Dimmer: Dimmable LED, CFL, halogen & incandescent Bulbs

Part 2: Installation and Wire Connection

Notice:

1. As the switch needs power for itself, three lines must be connected (Live Line, Load Line and Neutral Line);
2. Please use the wire nuts to make the copper conductors fully concealed;
3. If you really cannot find out a Neutral Line in your Power line Socket, STOP installing the switch and consult with a professional electrician or contact our service team.

Wiring Diagram for 3-Way wifi Switch



Step 1: Turn off power at the circuit breaker that controls the light switch. Use a voltage tester to confirm no voltage is present.

Step 2: Remove the existing faceplate and light switch, then identify Live/Load, Neutral and Ground lines.

Step 3: Connect the Smart Switch wiring with the provided wire connectors as follows:

- The black wire on switch (Live Line) Live Line
- The white wire on switch (Neutral Line) Neutral line
- The green wire on switch (Ground Line) Ground line

If use it as a Single Pole:

- The red wire on switch (Load Line) Load line to light bulbs
- Capped the Brown wire

If use it for 3-way:

Red & Brown wire on switch Travelers to the slave switch

Please wrap electrical tape around the wire nuts to make sure the copper conductor is fully concealed.

Part 3: Connect the 3Way Smart Dimmer Switch to Wi-Fi

Step 1: Download the App

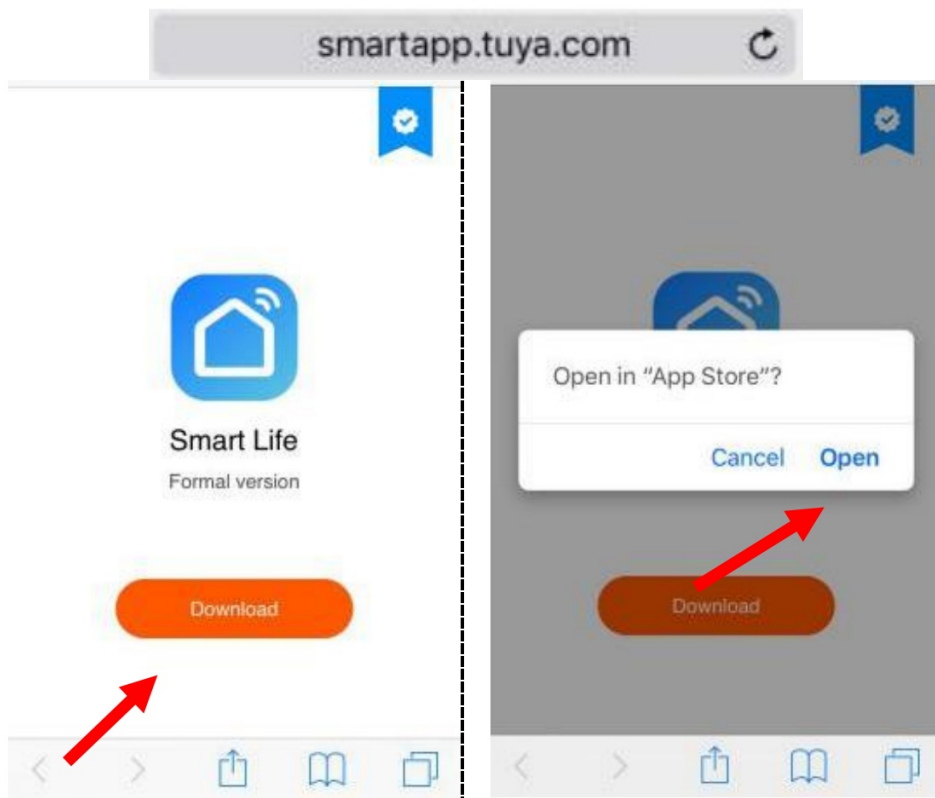
Scan the QR code or search “Smart Life” in the App Store or Google Play



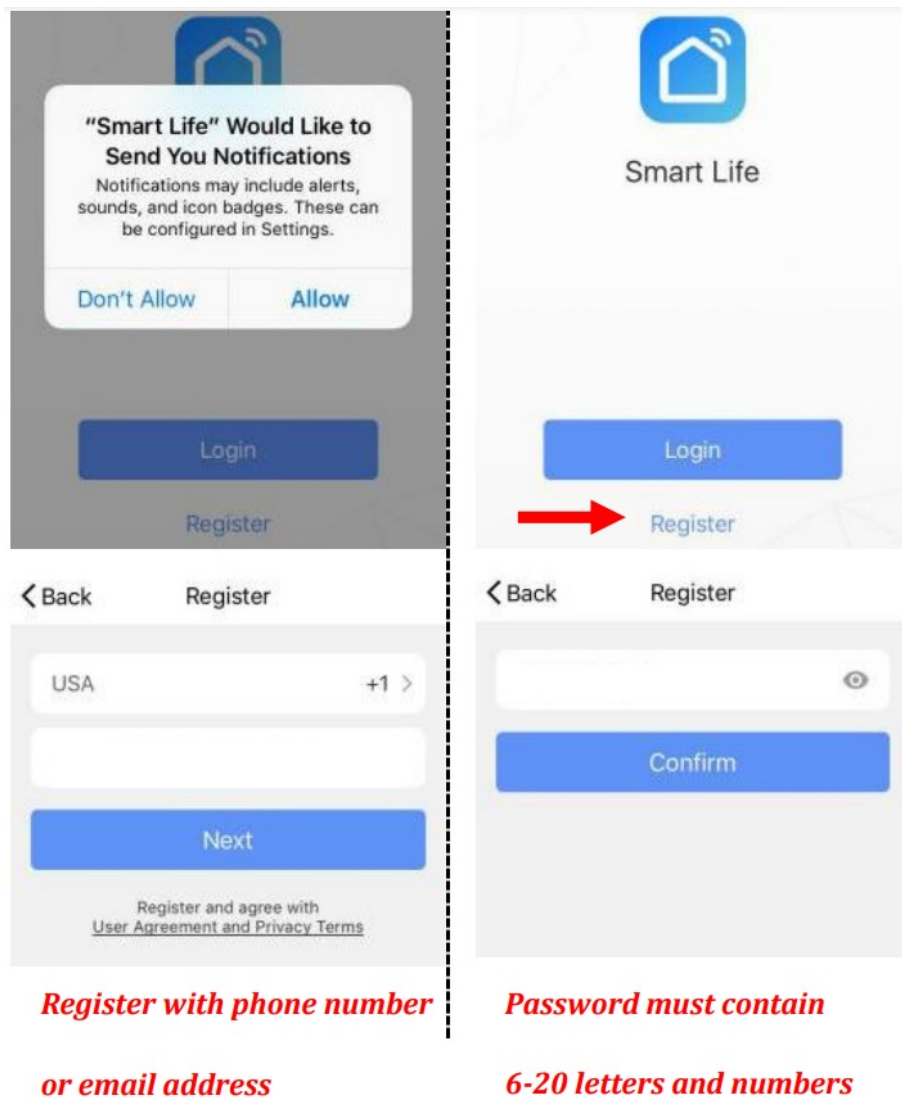
smartapp.tuya.com



<http://smartapp.tuya.com/smartlife?from=singlemessage&isappinstalled=0>



Step 2: Register a New Account



Step 3: Turn on the power at the circuit breaker. Press the Wi-Fi Button and then the Wi-Fi Indicator light flashes quickly in Red.

Flash Quickly in Red: Pairing Mode (EZ mode)

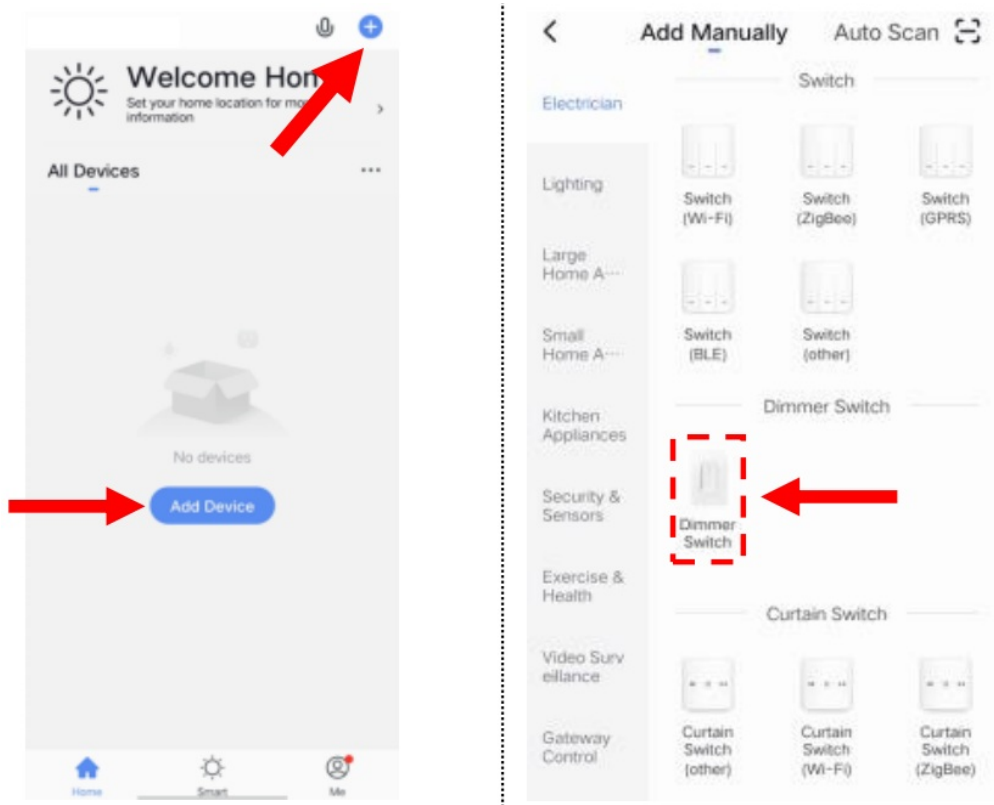
Constant Green Dimmer Indicator & Wi-Fi Indicator: Power ON, Wi-Fi Connected

Constant Red Wi-Fi Indicator: Lost Wi-Fi

Connection Dimmer Indicator OFF: Power OFF

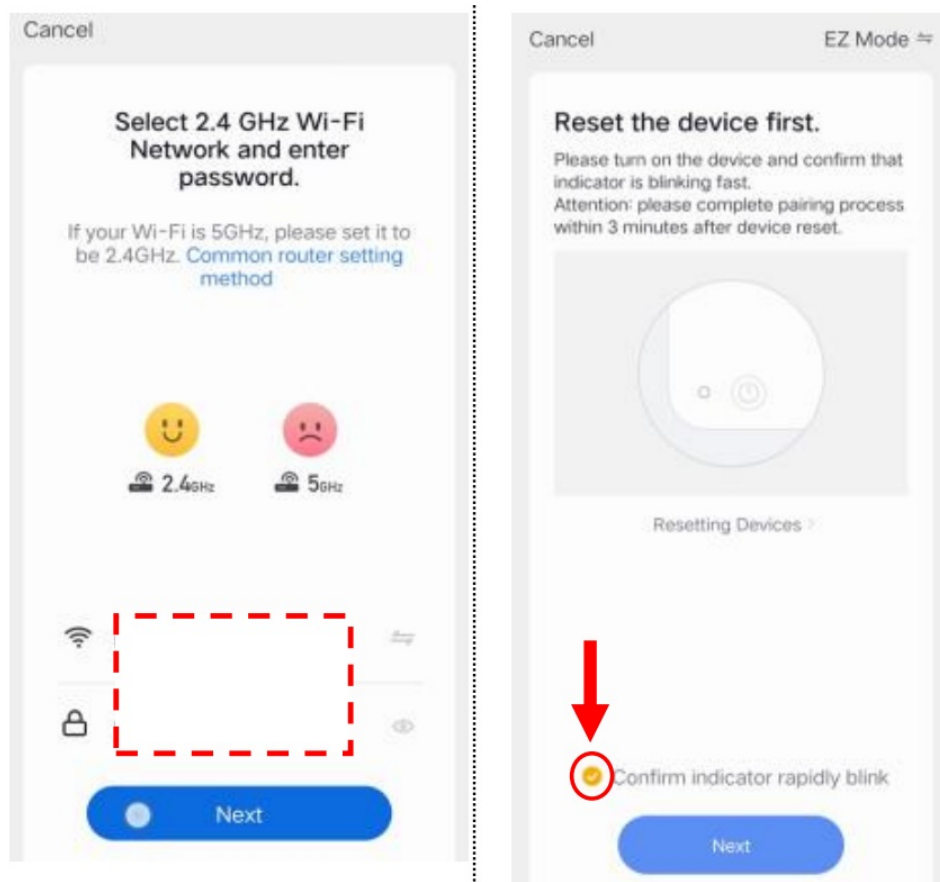
Step 4: Tap + to add a device in your App (Smartphone should connect to 2.4GHz Wi-Fi).

Step 5: Select "Dimmer Switch"

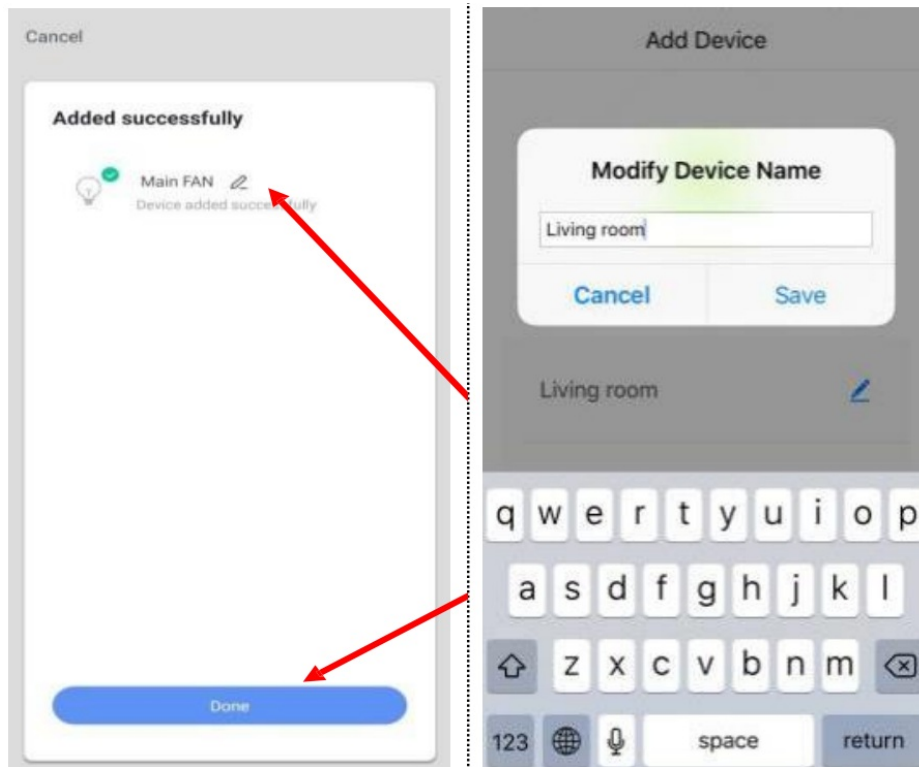


Step 6: Select the 2.4 GHz Wi-Fi network and enter your password. (Your phone should have connected to the same Wi-Fi first)

Step 7: Select Confirm and tap Next.



Step 8: It will be added in around 20 seconds. If it fails, try to reconnect and contact the seller for help. After the device is added, Input a proper name and click "Done". Simple Names will be easier to be identified by Echo or Google Home.



Step 9: The switch is connected and you can control it by this App. If you need voice control, please refer to Part 3 for Alexa, Part 4 for Google Assistant.

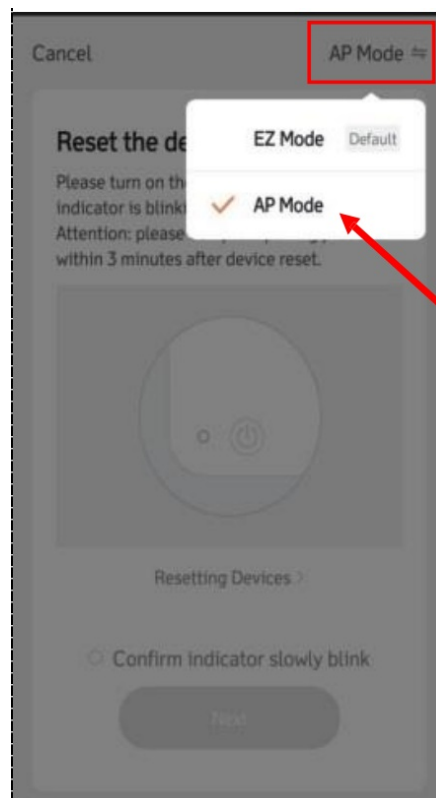
Congratulations! Now you can turn on/off the smart dimmer switch via App on your smartphone.

If the above pairing method (EZ mode) fails several times, Please try AP mode as follows:

Step 10: Set the switch to AP mode

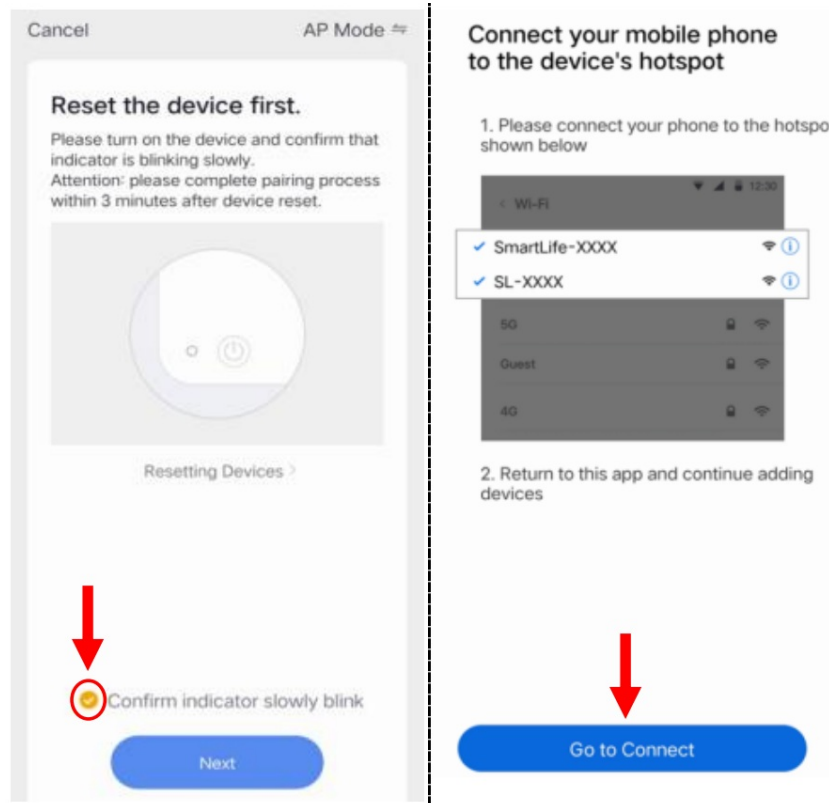
1. Press the Wi-Fi button once and you will see the indicator blinks quickly.
2. Then press and hold the Wi-Fi button for 5-8s until the indicator blinks slowly.

Step 11: After “Step 6: Select 2.4 GHz Wi-Fi network and enter your password,” Tap “EZ Mode” on the top right and select “AP Mode”.



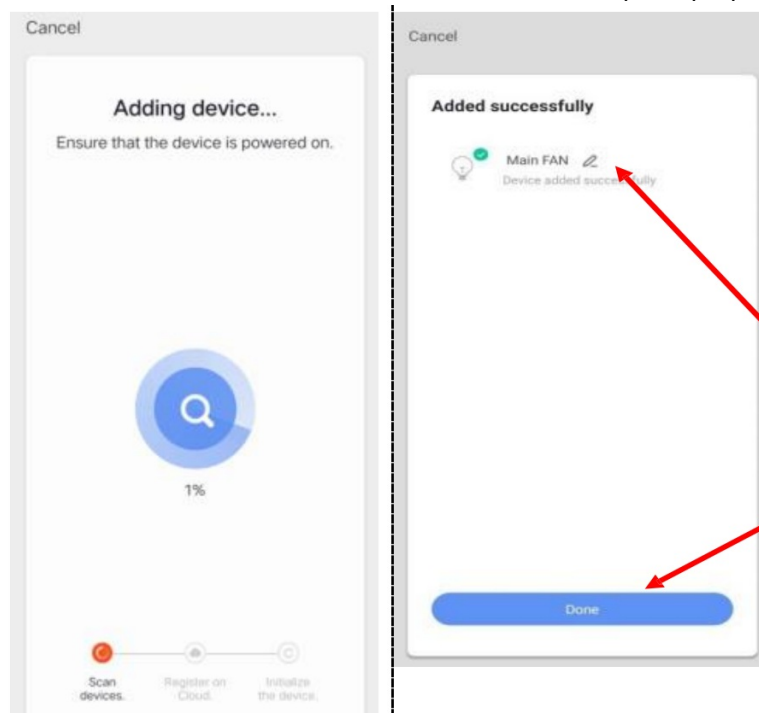
Step 12: Select Confirm and tap Next.

Step 13: Connect your phone to the device's hotspot like "Smart Life_xxxx".



Step 13: After selecting a hotspot like "Smart Life_xxxx" in the Wi-Fi setting page, go back to the App and it will connect automatically.

Step 14: It will be added in around 20 seconds. After the device is added, Input a proper name and click "Done".



FQA:

1. Cannot download the right App.

A: Please come back to step 1 and download by scanning the QR code. Please use a smartphone rather than a tablet.

2. Cannot discover the smart switch by App.

A: Make sure that your Wi-Fi router is 2.4GHz; DHCP is enabled in the Wi-Fi router; the phone connects to the same Wi-Fi; the Wi-Fi indicator flashes quickly.

3. No light comes out from the Main button/indicator

A: Please check the wire connection and press the restart button if necessary, then the Wi-Fi Indicator will blink quickly.

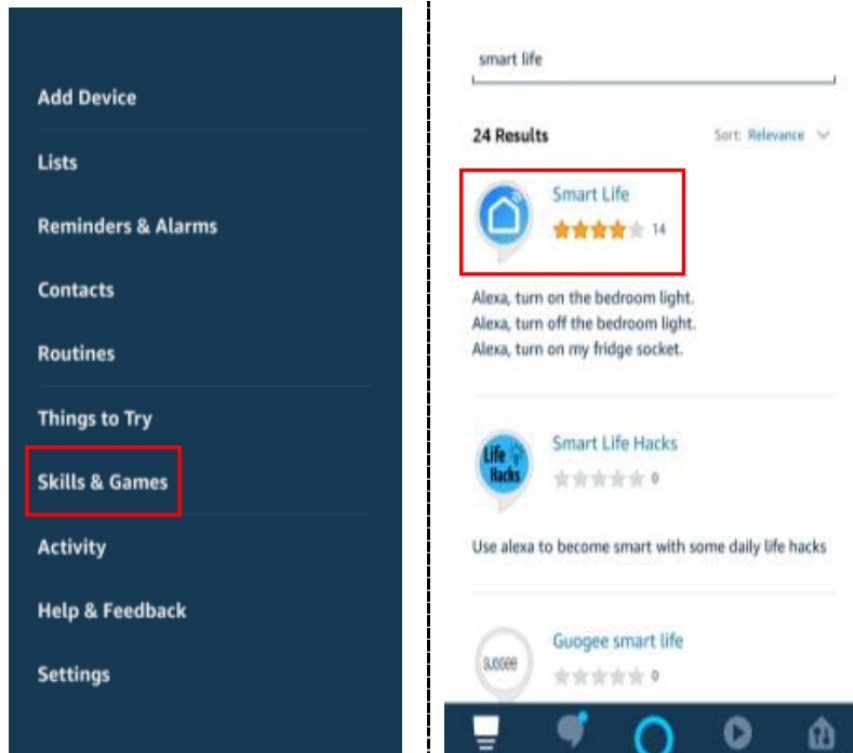
Part 3: Connect the Dimmer Switch to Alexa

Part 2 must be completed before doing this part 3



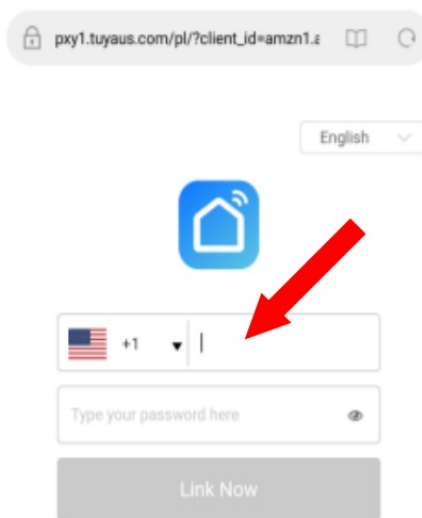
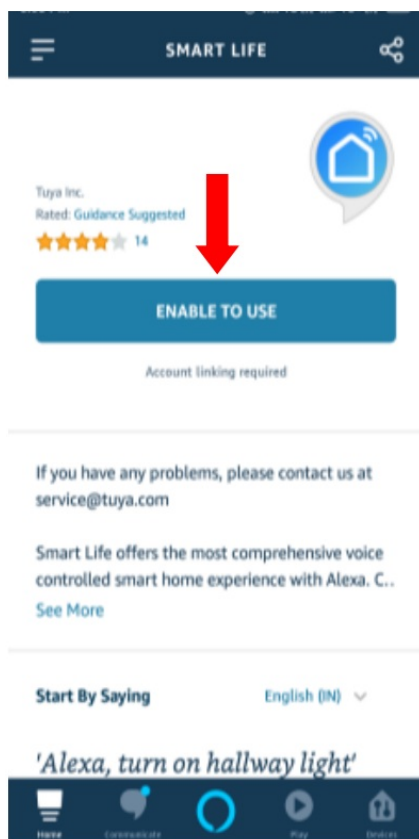
Step 1: Login your Alexa account on a smartphone or a computer, then tap Home Skills

Step 2: Search "Smart Life" and select the right one according to the blue logo (same with App)



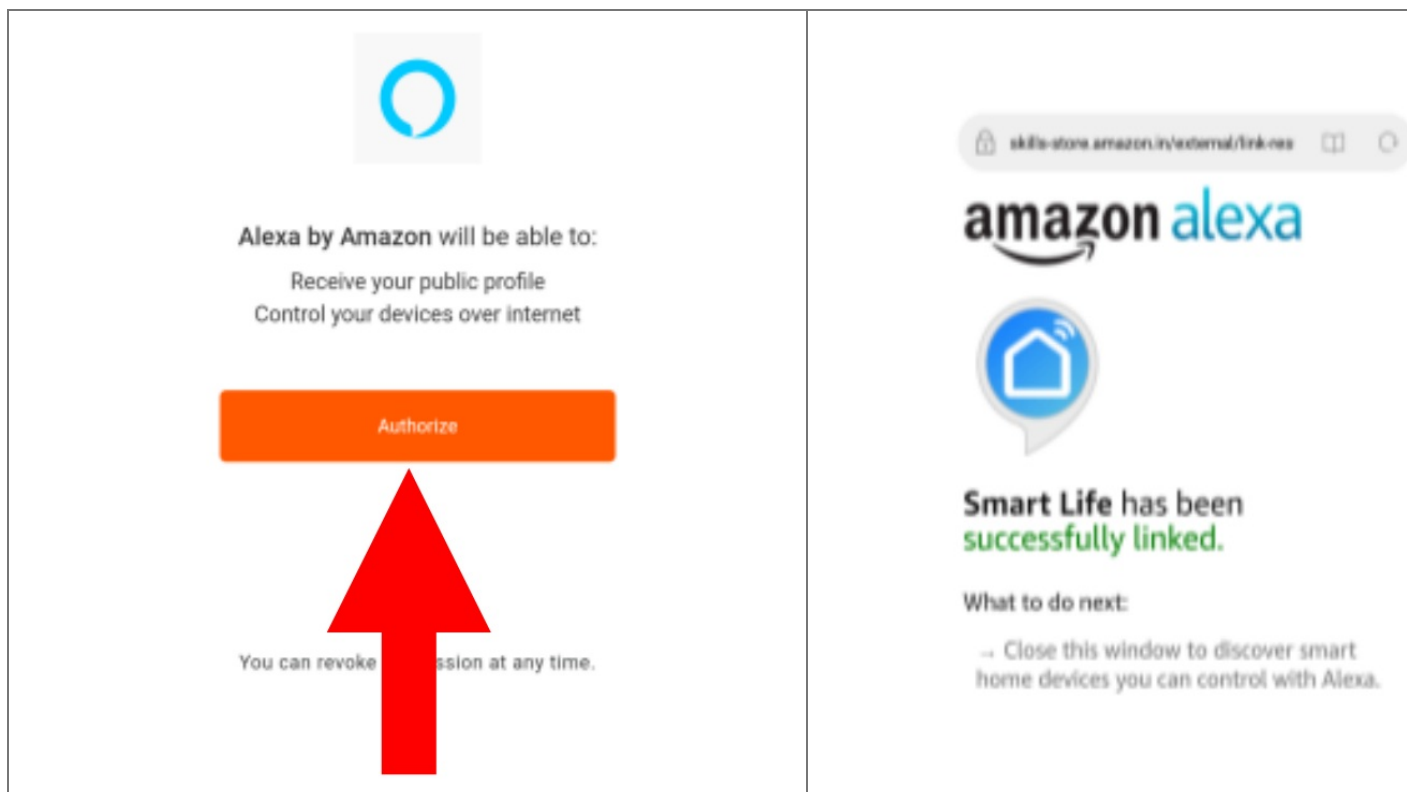
Step 3: Enable the skill

Step 4: Log in to the account you registered on the App in Part 2, then click "Link Now"



The account and password should be the same as you registered in the Smart Life App. DO NOT input your Alexa account or use another account.

Step 5: The Account is linked successfully, and then tap Authorize to Complete.



Congratulations! Alexa Devices (Echo) can control the Switch now.

- To add or delete switches, please delete or add them in the Smart Life App (see Part 2), and then the Alexa will synchronize automatically.
- If you cannot see the name of switches in the Devices List in Alexa Page, you can click “Discover” on Alexa Page, it will synchronize from the Smart Life App.

NOTE: If you want to control your smart devices through Amazon Alexa, you should assign a name to switch. After naming your switch, Which name you assigned to your switch that name should use in the command. For example, if you set the switch name as “Bedroom light”, the supported voice commands are as below:

“Echo, turn ON Bedroom light”. (Bedroom light will be ON)

“Echo, turn OFF Bedroom light”. (Bedroom light will OFF)

“Echo, Set 50% to bedroom light”. (Bedroom light brightness will be set to 50%)

“Echo, Set 70% to bedroom light”. (Bedroom light brightness will set to 70%).

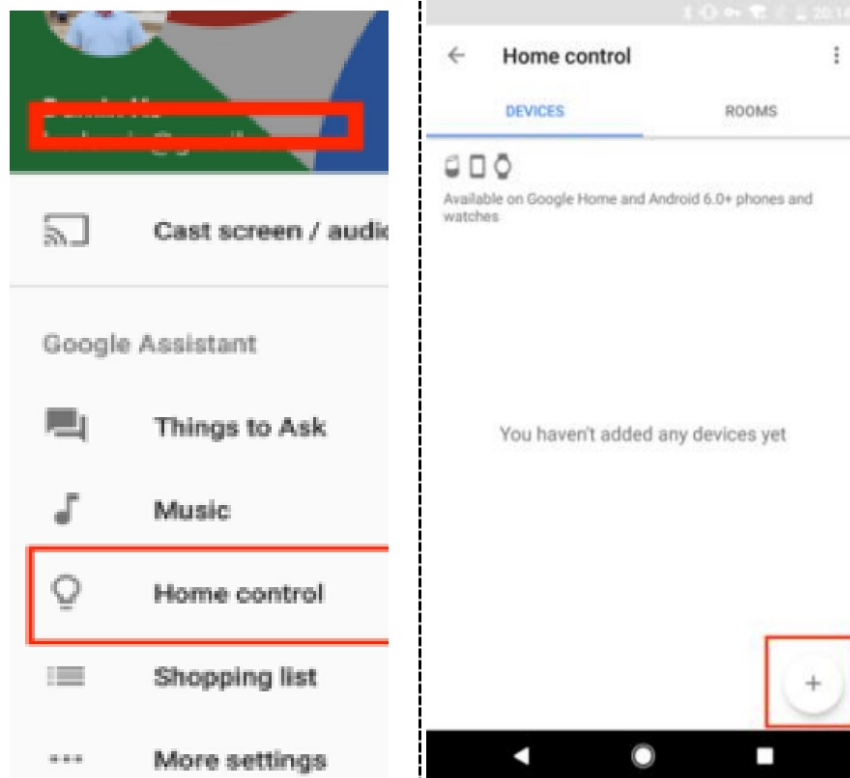
Now you can control the smart device with Amazon Alexa.

Part 4: Connect the Dimmer Switch to Google Home



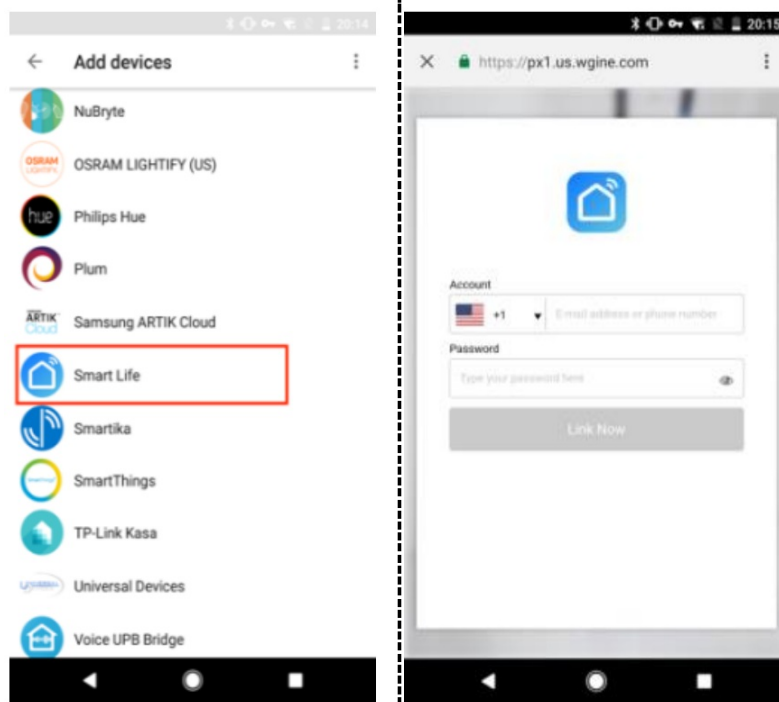
Part 2 must be completed before doing this part 4

Step 1: Find “Home Control” in the hamburger menu on the Google Home app’s home page ->Home Control -> tap “+”.

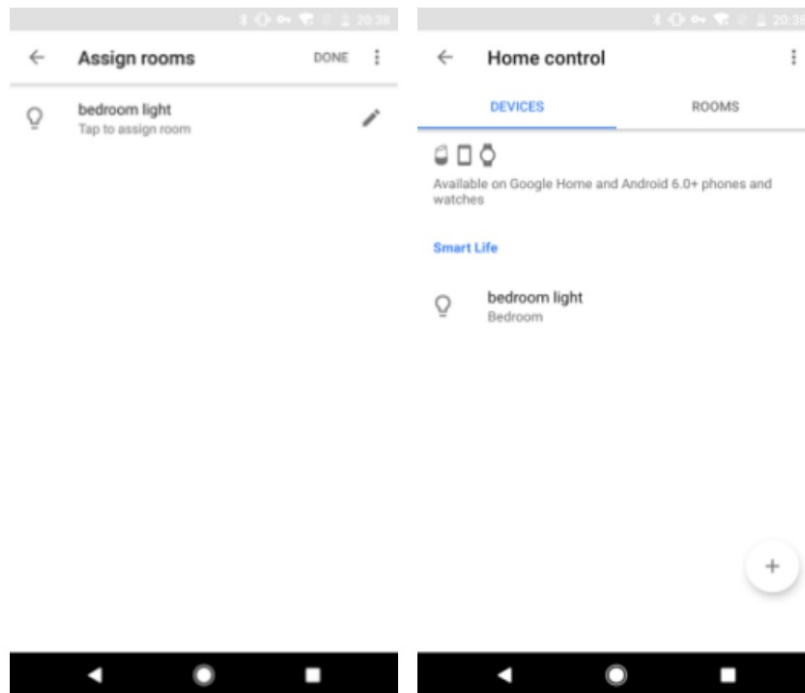


Step 2: Find “Smart Life” in the list.

Step 3: Input your Smart Life account and password you registered in Part 2, then tap “Link Now”.



Step 4: After you assign rooms for the switch, your switch will be listed on the Home Control page.



Step 5: Control your smart switch through Google Home Now you can control your smart switch through Google Home. If you set the name as “bedroom light”, the supported voice commands are as below:

Ok Google, turn on the bedroom light.

Ok Google, set bedroom light to 50%.

Warning:

- Please install it by a professional electrician
- If there is radio frequency interference, it might affect the operation
- Indoor use only
- Do not use in the bathroom and other damp locations
- Please ensure that the light bulb is within the capacity of this switch.

INCH 400W

LED 150W

CFL 150W

- Please keep the device out of the reach of children for safety.

FCC Warning:

This device complies with Part 15 of the FCC Rules. Operation is subject to the following two conditions: (1) this device may not cause harmful interference, and (2) this device must accept any interference received, including interference that may cause undesired operation. Changes or modifications not expressly approved by the party responsible for compliance could void the user's authority to operate the equipment.

NOTE: This equipment has been tested and found to comply with the limits for a Class B digital device, pursuant to Part 15 of the FCC Rules. These limits are designed to provide reasonable protection against harmful interference in a residential installation. This equipment generates uses and can radiate radio frequency energy and, if not installed and used in accordance with the instructions, may cause harmful interference to radio communications. However, there is no guarantee that interference will not occur in a particular installation. If this equipment does cause harmful interference to radio or television reception, which can be determined by turning the equipment off and on, the user is encouraged to try to correct the interference by one or more of the following measures:

- Reorient or relocate the receiving antenna.
- Increase the separation between the equipment and receiver.
- Connect the equipment into an outlet on a circuit different from that to which the receiver is connected.
- Consult the dealer or an experienced radio/TV technician for help.

NOTE: This device and its antenna(s) must not be co-located or operated in conjunction with any other antenna or transmitter RF Exposure Statement To maintain compliance with FCC's RF exposure guidelines, This equipment should be installed and operated with a minimum distance of 20cm the radiator your body. This device and its antenna(s) must not be co-located or operated in conjunction with any other antenna or transmitter

Documents / Resources

<div><div>User Manual</div><div>3Way Smart Dimmer Switch</div><div>Contents</div><div><div>Part 1: General</div><div>1.1. Key Features</div><div>1.2. Installation</div><div>Part 2: Installation and Wire Connections</div><div>Part 3: Connect the 3Way Smart Dimmer Switch to the</div><div>Part 4: Connect the Dimmer Switch to the Load</div><div>Part 5: Connect the Dimmer Switch to the Load</div></div><div>1</div></div>	<div><div>Martin Jerry US-STD-KN01 3Way Smart Dimmer Switch [pdf] User Manual</div><div>USSTDKN, 2ANJ7-USSTDKN, 2ANJ7USSTDKN, US-STD-KN01, 3Way Smart Dimmer Switch</div><div>, US-STD-KN01 3Way Smart Dimmer Switch</div></div>
--	--