



## Martin Jerry IOT Device User Manual

[Home](#) » [Martin Jerry](#) » Martin Jerry IOT Device User Manual 

### Contents

- [1 Martin Jerry IOT Device](#)
- [2 Documents / Resources](#)
  - [2.1 References](#)
- [3 Related Posts](#)



**Martin Jerry IOT Device**

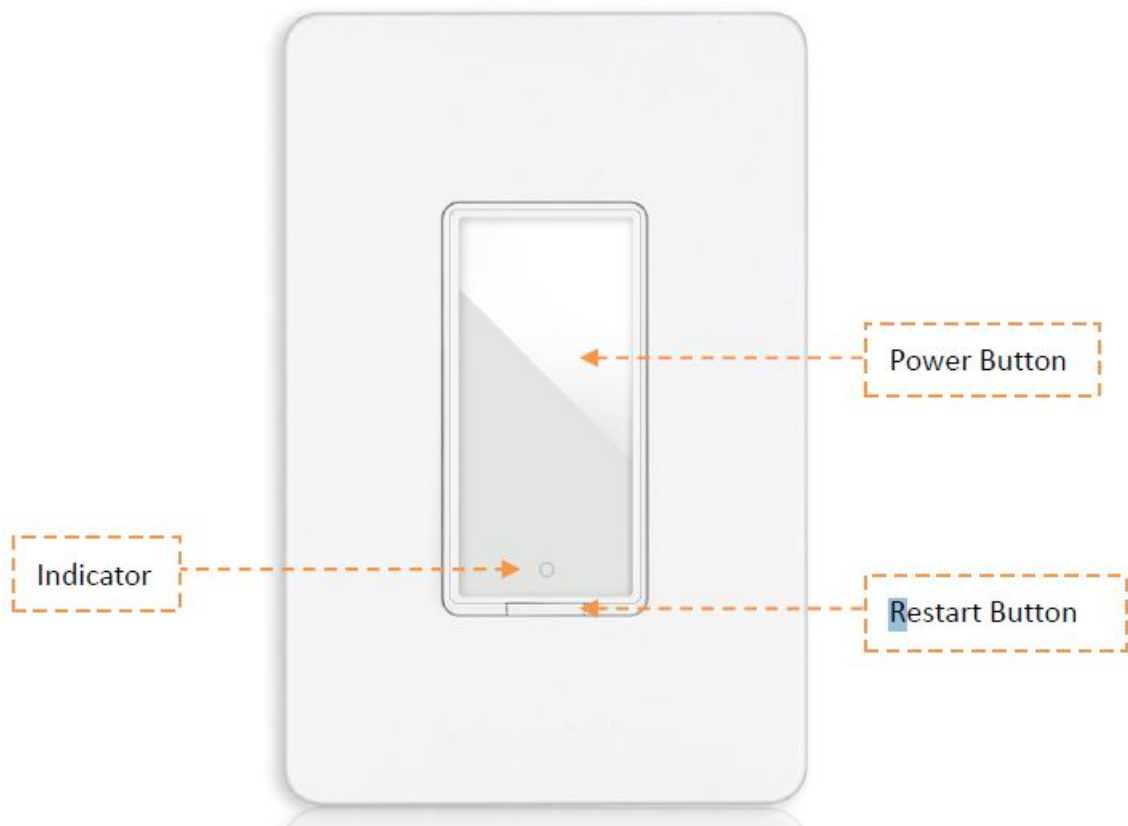


## READ HERE!!!

1. Confirm that both of the 3-Way Switches work well manually (Pressing buttons). If not, go back to the wiring part
2. 4G WiFi is available. NOT support 5G (802.11av)

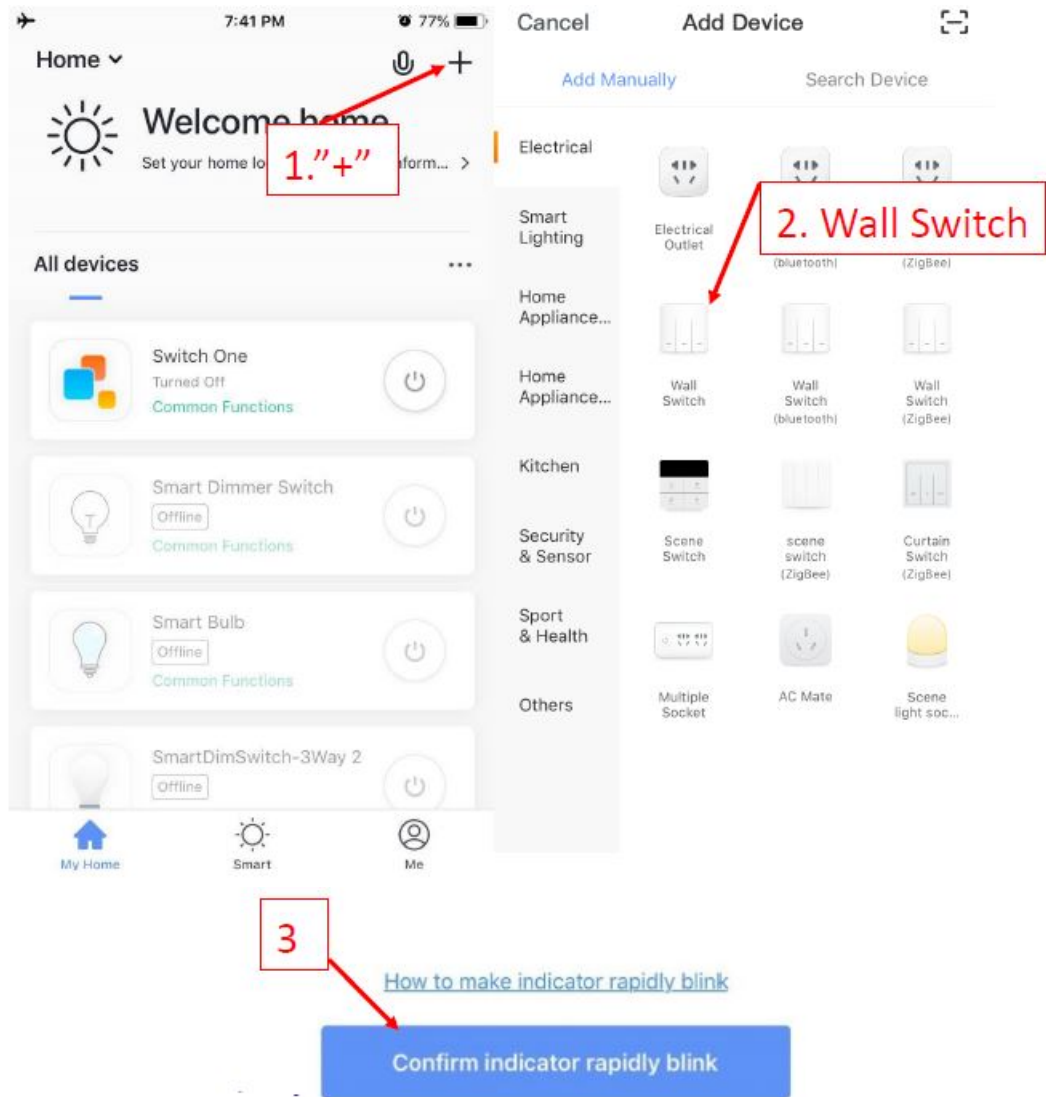
### Step 1: Set the Switch to Easy Pairing Mode

1. Press the tiny restart button under the main power button to restart the switch. You will see the indicator in RED.
2. Press and hold the power button for 5-8s until the indicator blinks quickly in pure blue (NOT red/purple)



### Step 2: Pair the switch on App

1. Confirm that you have downloaded the right Smart Life App (Same Logo as the right side) If not, download it from the links iPhone: <https://itunes.apple.com/us/app/smart-life-smart-living/id1115101477?mt=8> Android: [https://play.google.com/store/apps/details?id=com.tuya.smartlife&hl=en\\_US2](https://play.google.com/store/apps/details?id=com.tuya.smartlife&hl=en_US2). Wall Switch 3 1."+"

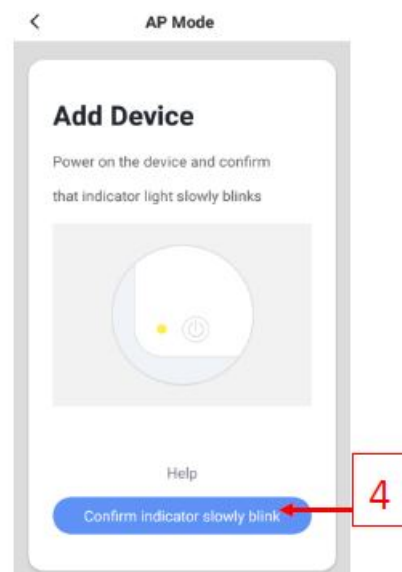
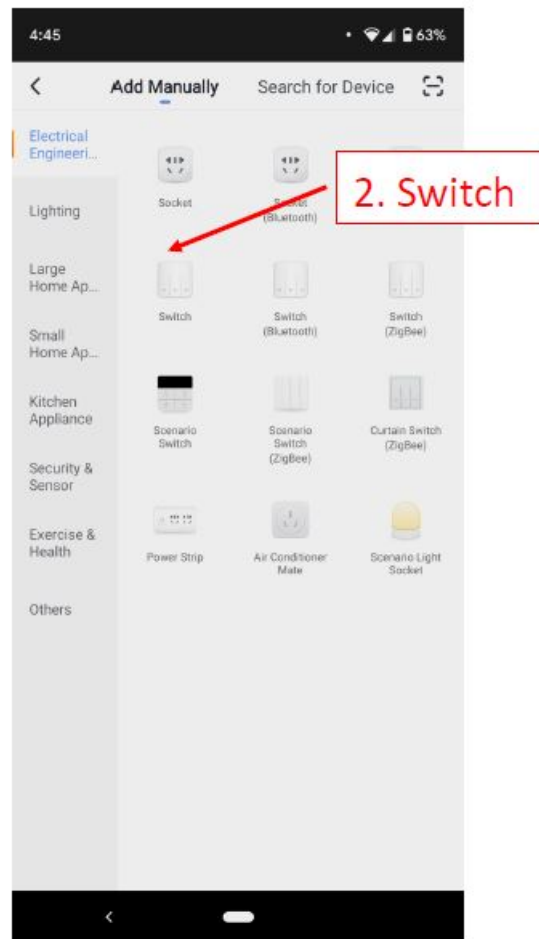
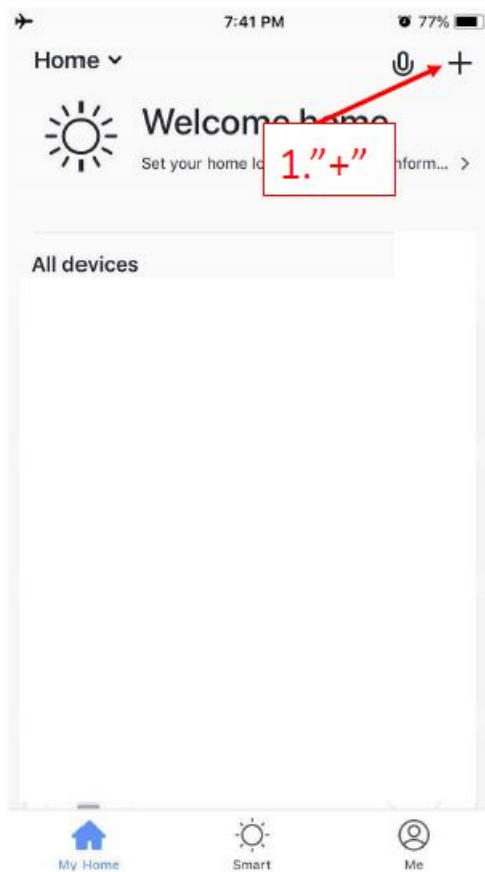


If the above pairing method failed several times, please go to the AP mode mentioned in coming pages.

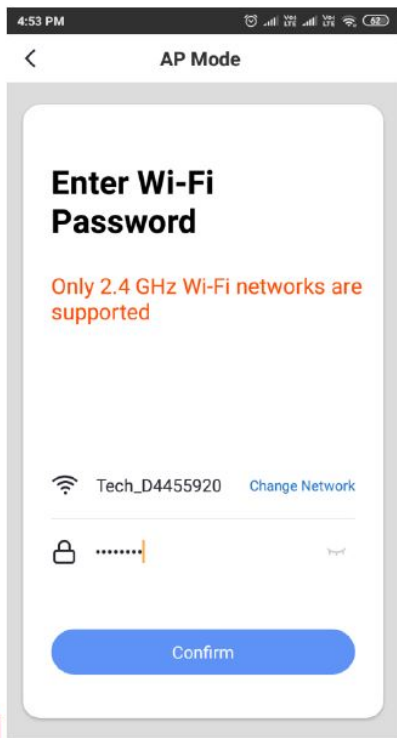
### Step 1: Set the switch to AP mode

1. Press the tiny restart button under the main power button to restart the switch. You will see the indicator in RED.
2. Press and hold the power button for 5-8s until the indicator blinks quickly in Blue.
3. Press and hold the power button for 5-8s until the indicator blinks slowly in Blue.

### Step 2: Pair the switch on SmartLife App (AP mode)

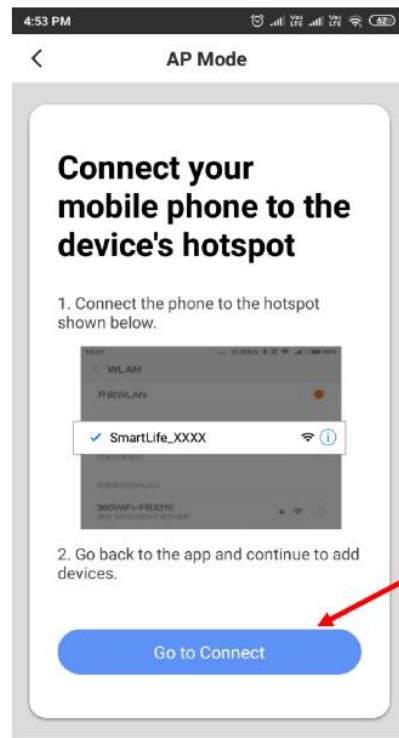


Then, input the password of your Wi-Fi router —> Connect the Hotspot from the Switch —> Back to App for pairing.

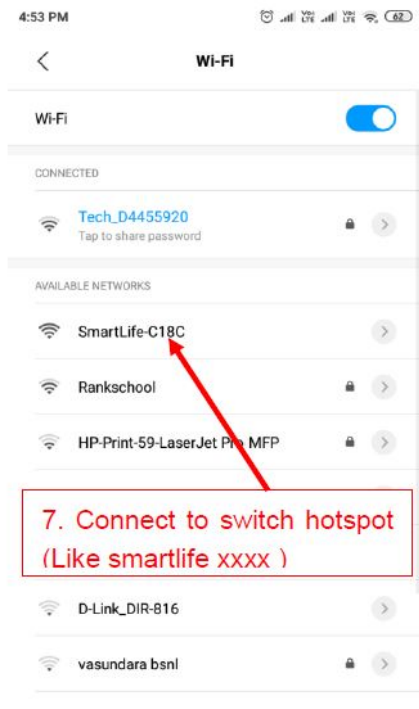


5

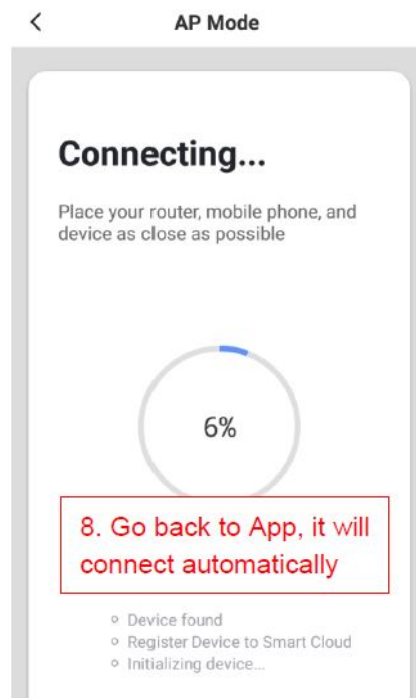
Input your password.(2.4WiFi)



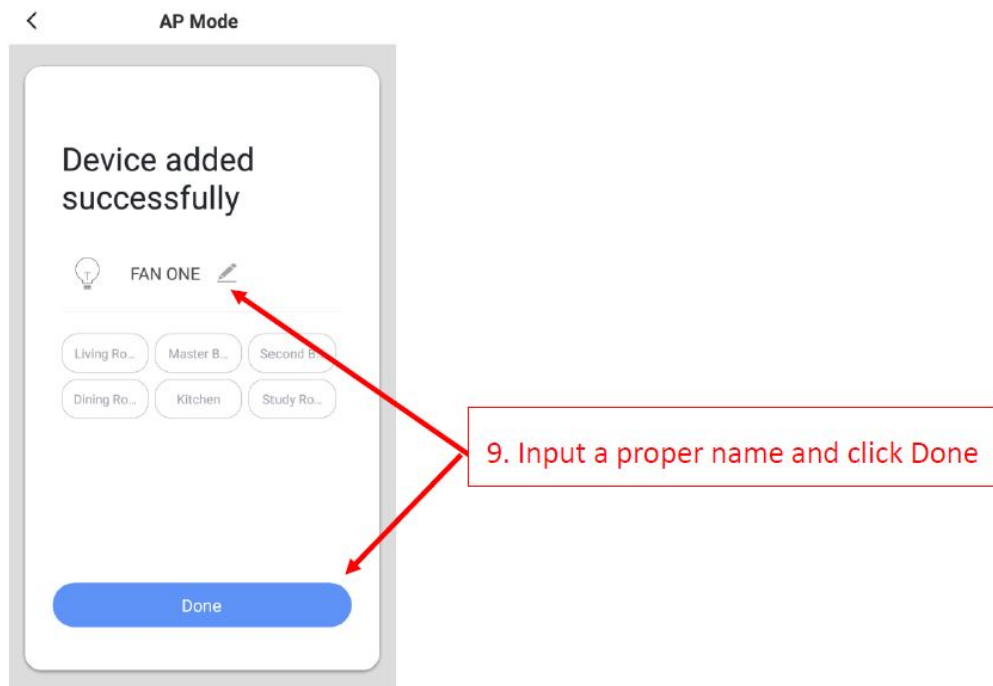
6



7. Connect to switch hotspot  
(Like smartlife xxxx )



8. Go back to App, it will  
connect automatically



Tech support:

<http://www.martinjerry.com/st01support>.



## Documents / Resources

	<p><a href="#">Martin Jerry IOT Device</a> [pdf] User Manual IOT Device</p>
--	---

## References

- [ST01 | martinjerry](#)
- [Smart Life - Smart Living on the App Store](#)
- [Smart Life - Smart Living - Apps on Google Play](#)

Manuals+.