



Martec MDDC133M Smart Ceiling Fan With WIFI Remote Control LED Light Installation Guide

[Home](#) » [martec](#) » Martec MDDC133M Smart Ceiling Fan With WIFI Remote Control LED Light Installation Guide



Contents

- [1 Martec MDDC133M Smart Ceiling Fan With WIFI Remote Control LED Light](#)
- [2 IMPORTANT SAFEGUARDS](#)
- [3 How to Assemble](#)
- [4 How to Install Blades](#)
- [5 How to Install](#)
- [6 Wire Connections](#)
- [7 WiFi / Remote Control Pairing](#)
- [8 Documents / Resources](#)
 - [8.1 References](#)



Martec MDDC133M Smart Ceiling Fan With WIFI Remote Control LED Light



Specifications

- Models Parameters (Fan Only): MDDC133M 1320mm 3Blade DC WiFi Ceiling Fan Matt Black
- Models Parameters (Fan and LED Light): MDDC1333 M 1320mm 3Blade DC WiFi Ceiling Fan Matt Black with

light

- Part List:
 - 1x Motor assembly
 - 1x Mounting bracket
 - 1x Mounting plate
 - 1x Instruction manual
 - 1x Remote & Receiver
 - 1x Coupling cover
 - 1x Screw kit
 - 3x Blades
 - 2x Downrod
 - 1x Motor Housing
 - 1x Canopy

Important Safeguards

Before proceeding with the installation, please take note of the following important safeguards:

- Means for disconnection must be incorporated in the fixed wiring in accordance with the wiring rules.
- The replacement of parts of the safety suspension system device shall be performed by the manufacturer, its service agent, or suitably qualified persons.
- The light source contained in this luminaire shall only be replaced by the manufacturer or his service agent or a similar qualified person.
- This appliance is not intended for use by persons (including children) with reduced physical, sensory or mental capabilities, or lack of experience and knowledge, unless they have been given supervision or instruction concerning use of the appliance by a person responsible for their safety.
- Children should be supervised to ensure that they do not play with the appliance.
- The fixing means for attachment to the ceiling such as hooks or other devices shall be fixed with sufficient strength to withstand 4 times the weight of the ceiling fan.
- The mounting of the suspension system shall be performed by the manufacturer, its service agent, or suitably qualified persons.
- The fan is to be installed so that the blades are more than 2.1m above the floor.
- If unusual oscillating movement is observed, immediately stop using the ceiling fan and contact the manufacturer, its service agent, or suitably qualified persons.

How to Assemble

Follow the steps below to assemble the ceiling fan:

1. Secure the bracket to the ceiling by using screws provided.
Ensure screws are tightened on the bracket. (Refer to Figure 1)
2. Wire to main as illustrated. (Refer to Figure 2)

How to Install Blades

Follow the steps below to install the blades:

1. Install the blades to the motor with screws provided. Tighten screws securely. Repeat this procedure until all blades are installed. (Refer to Figure 3)
2. **Note:** Ensure the blades do not get damaged or bent during the installation process while the fan may be on the ground, as this will affect the performance and balance of the fan and is not covered under warranty.

How to Install

Follow the steps below to install the ceiling fan:

1. Remove cotter-pin and cross-pin from the bottom of the downrod.
At the top of the downrod, loosen the two set screws and remove ball pin. Ensure all pieces are carefully put aside. (Refer to Figure 4)
2. Feed the main motor wire plug and light wire plug (with light models only) through the inside of the downrod, then insert and rotate the downrod into the coupling as illustrated. (Refer to Figure 5 and Figure 6)

FAQ

Q: What models are available for the Daytona DC Smart Series ceiling fan?

A: The available models are MDDC133M (Fan Only) and MDDC1333M (Fan and LED Light).

Q: How high should the blades be installed from the floor?

A: The blades should be installed at a height of more than 2.1m above the floor.

Q: What should I do if I notice unusual oscillating movement of the fan?

A: If unusual oscillating movement is observed, immediately stop using the ceiling fan and contact the manufacturer, its service agent, or suitably qualified persons.

E: sales@martec Ltd.com.au

IP: 02 8778 7500

www.martecaustralia.com.au

Thanks for choosing our Daytona DC Smart Series ceiling fan.
We strongly recommend that you read this manual carefully before installation.

Models Parameters (Fan Only)

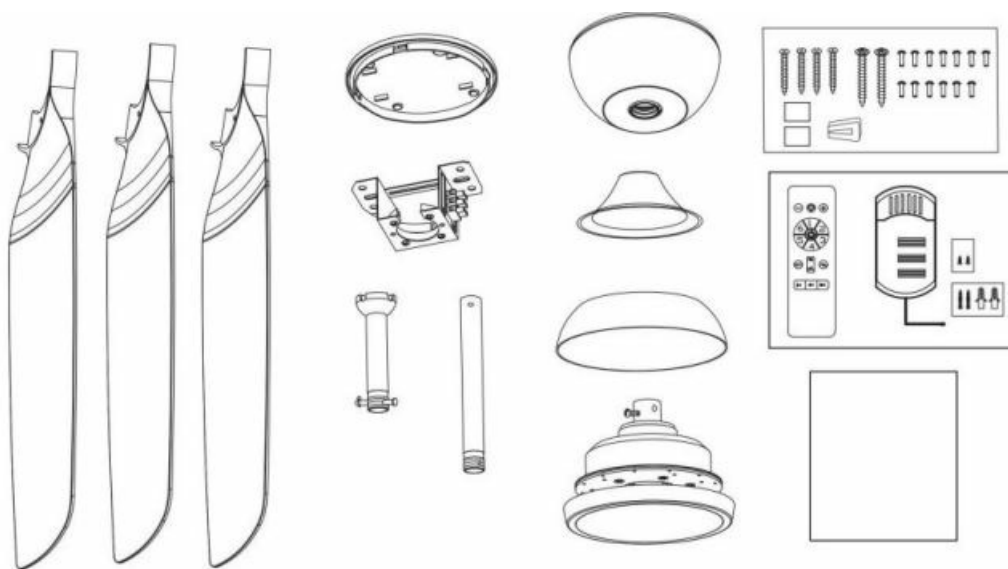
MDDC133M 1320mm 3 Blade DC WiFi Ceiling Fan Matt Black

Models Parameters (Fan and LED Light):

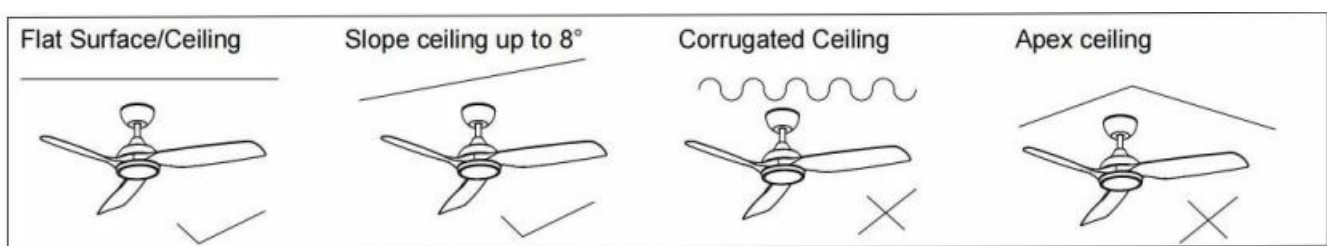
MDDC1333 M 1320mm 3 Blade DC WiFi Ceiling Fan Matt Black with light

Part List:

- Qty 1 x Motor assembly
- Qty 1 x Mounting bracket
- Qty 1x Mounting plate
- Qty 1x Instruction manual
- Qty 1 x Remote & Receiver
- Qty 1x Coupling cover
- Qty 1 x Screw kit
- Qty 3x Blades
- Qty 2x Downrod
- Qty 1x Motor Housing
- Qty 1 x Canopy



Application



WARNING Installation MUST carry out by a qualified and licensed electrician.

IMPORTANT SAFEGUARDS

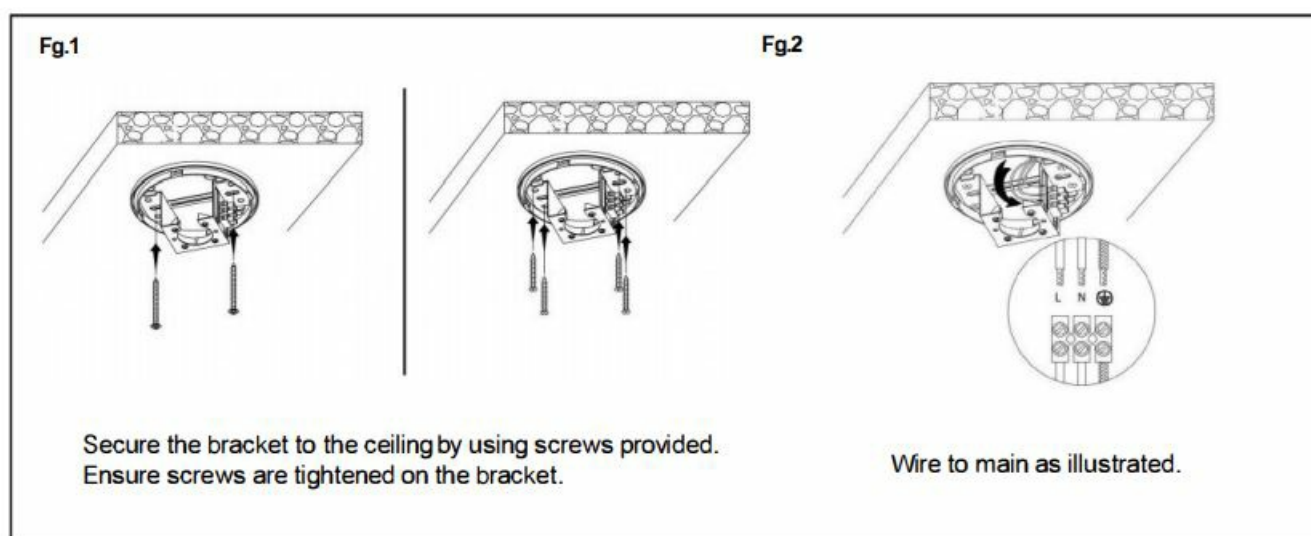
- Means for disconnection must be incorporated in the fixed wiring in accordance with the wiring rules.
- The replacement of parts of the safety suspension system device shall be performed by the manufacturer, its service agent or suitably qualified persons.
- The light source contained in this luminaire shall only be replaced by the manufacturer or his service agent or a similar qualified person.
- This appliance is not intended for use by persons (including children) with reduced physical, sensory or mental

capabilities, or lack of experience and knowledge, unless they have been given supervision or instruction concerning use of the appliance by a person responsible for their safety.

- Children should be supervised to ensure that they do not play with the appliance.
- the fixing means for attachment to the ceiling such as hooks or other devices shall be fixed with a sufficient strength to withstand 4 times the weight of the ceiling fan;
- that the mounting of the suspension system shall be performed by the manufacturer, its service agent or suitably qualified persons;
- that the fan is to be installed so that the blades are more than 2,1m above the floor.

WARNING: If unusual oscillating movement is observed, immediately stop using the ceiling fan and contact the manufacturer, its service agent or suitably qualified persons.

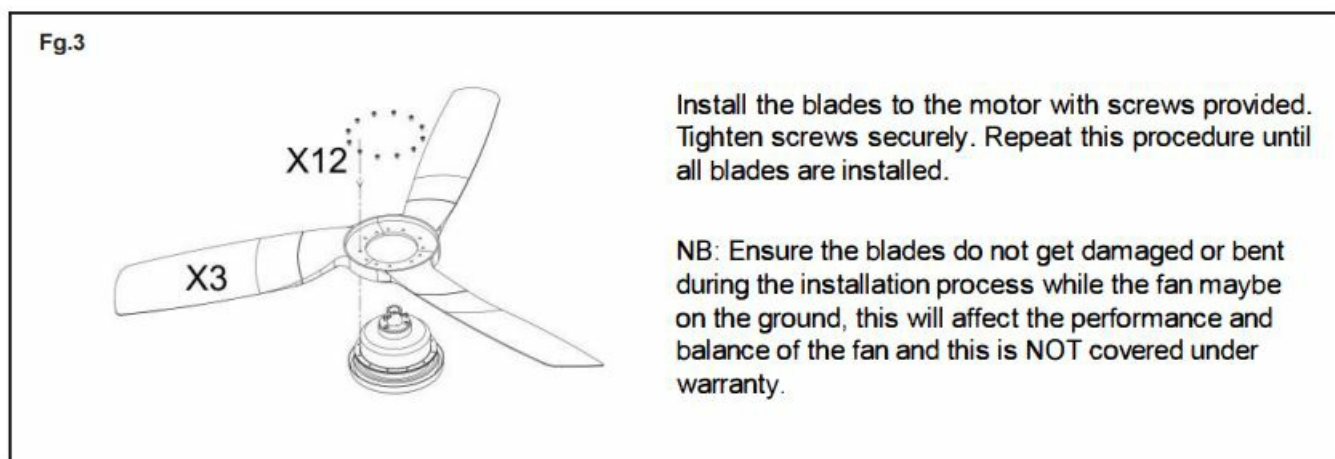
How to Assemble



How to Install Blades

Install the blades to the motor with screws provided. Tighten screws securely. Repeat this procedure until all blades are installed.

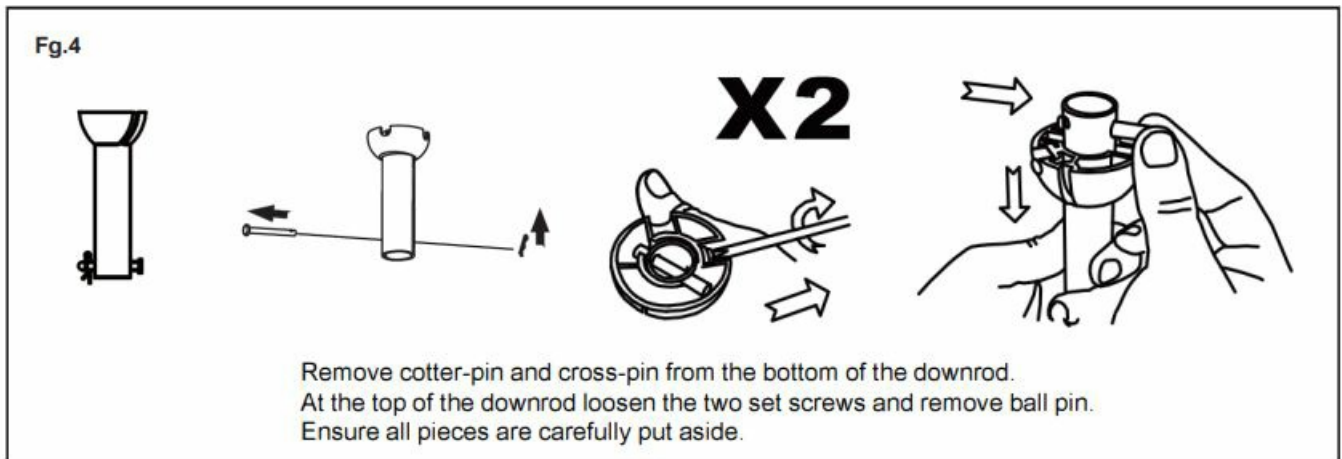
NB: Ensure the blades do not get damaged or bent during the installation process while the fan maybe on the ground, this will affect the performance and balance of the fan and this is NOT covered under warranty.



How to Install

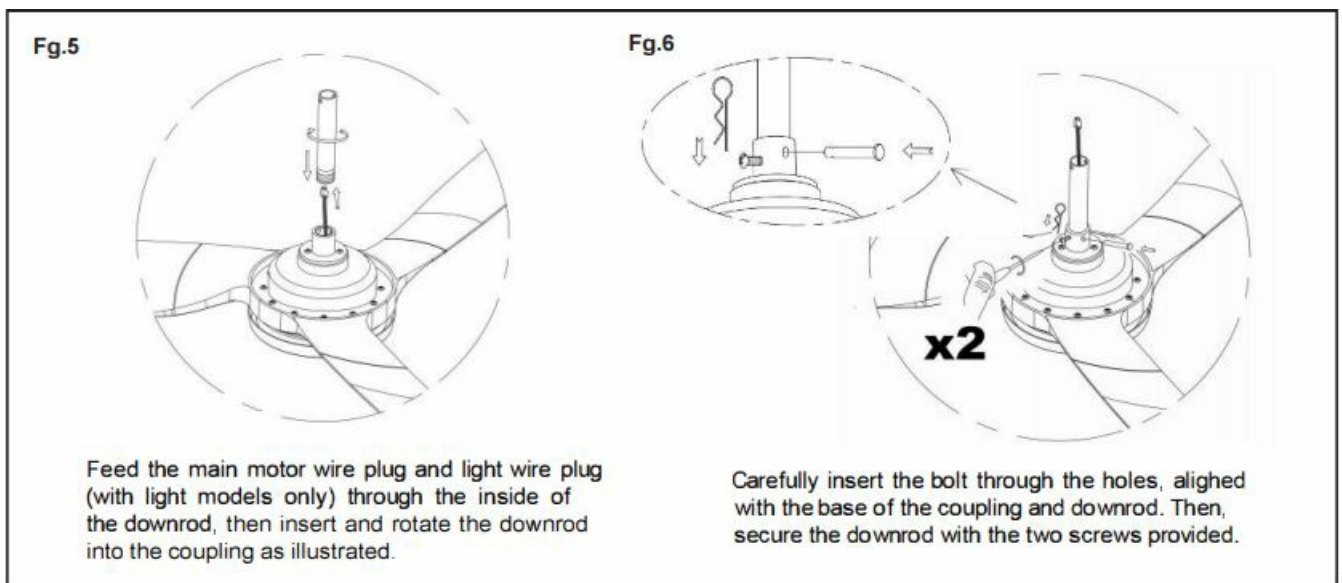
Remove cotter-pin and cross-pin from the bottom of the downrod.

At the top of the downrod loosen the two set screws and remove ball pin. Ensure all pieces are carefully put aside.



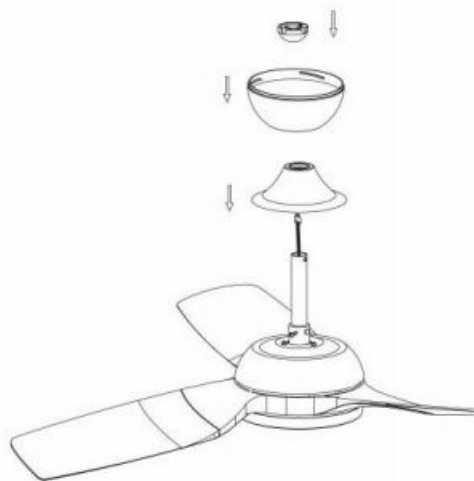
Feed the main motor wire plug and light wire plug (with light models only) through the inside of the downrod, then insert and rotate the downrod into the coupling as illustrated.

Carefully insert the bolt through the holes, aligned with the base of the coupling and downrod. Then, secure the downrod with the two screws provided.



- Loosen 3 screws by 70% as illustrated.
- Put the motor housing through the downrod as illustrated.
- Secure the motor housing to the motor with 3 screws.
- Assemble rest parts of the fan as illustrated.

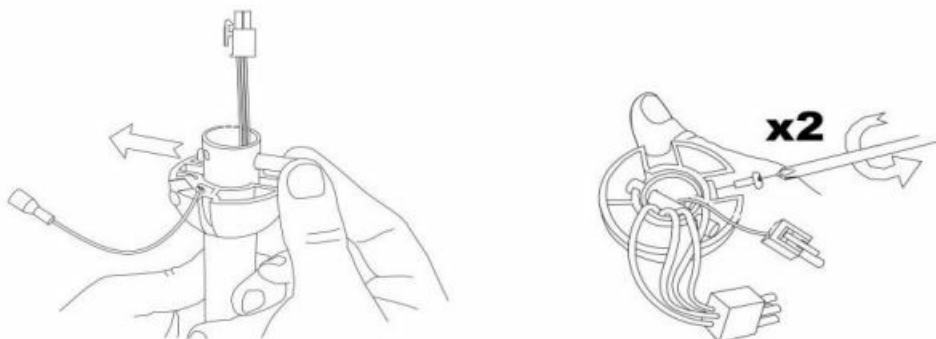
Fg.10



Assemble rest parts of the fan as illustrated.

- Install the hanging ball with the little pole and two screws as illustrated.

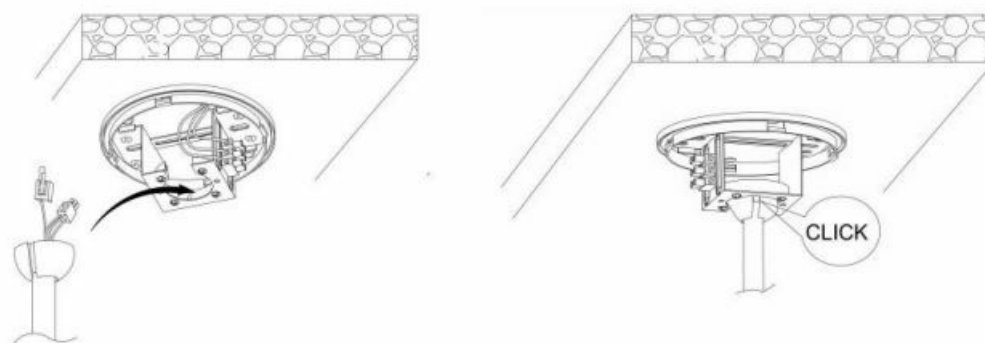
Fg.11



Install the hanging ball with the little pole and two screws as illustrated.

- Place fan into mounting bracket and align ball joint slot with mounting bracket as illustrated.

Fg.12



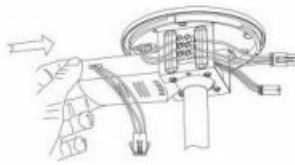
Place fan into mounting bracket and align ball joint slot with mounting bracket as illustrated.

- Fan Only Model
 - Carefully insert and install the receiver into the mounting bracket.
 - Connect all connectors as illustrated.
- Fan and LED Light Model

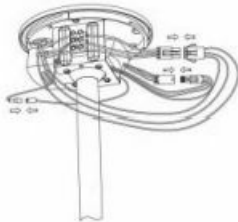
- Carefully insert and install the receiver into the mounting bracket.
- Connect all connectors as illustrated.

Fg.13

Fan Only Model

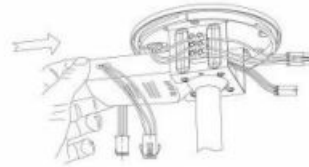


Carefully insert and install the receiver into the mounting bracket.

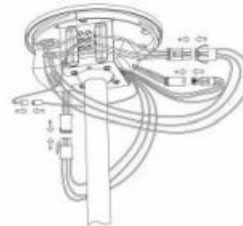


Connect all connectors as illustrated.

Fan and LED Light Model



Carefully insert and install the receiver into the mounting bracket.



Connect all connectors as illustrated.

Wire up the receiver with quick connectors and insert into the mounting bracket. Make sure the antenna wire has been safely folded inside the canopy cover before final assembly. (DO NOT cut the antenna wire)

Important Reminders

Receiver must be correctly installed in the mounting bracket
When the transmitter cannot control the receiver, please check

1. has sufficient battery in the transmitter
2. any existence of similar remote controlled products nearby that cause interference

Replace battery if getting low as this will affect sensitivity of the transmitter

Take the battery out from the transmitter when leaving used for a long time to avoid battery leaks Isolation switch MUST be connected in the line

After wiring is completed, attach the canopy to the mounting bracket by pushing upwards and twisting anti clockwise.

Fg.14

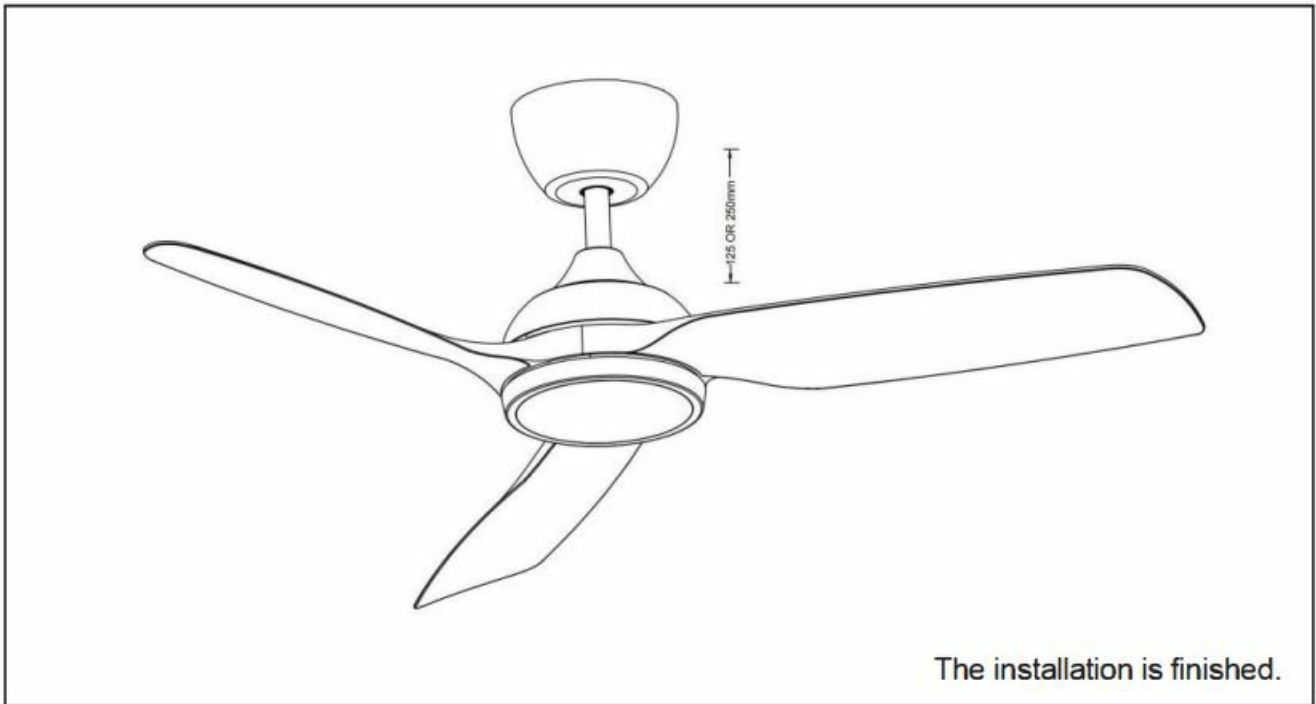


After wiring is completed, attach the canopy to the mounting bracket by pushing upwards and twisting anti clockwise.

WOBBLE:

- Ceiling fans are designed to move during operation because they are not generally rigidly mounted
- Movement of a couple of centimetres is acceptable for safe operation.
- Balancing kits included should be used to adjust the balancing when first installed.

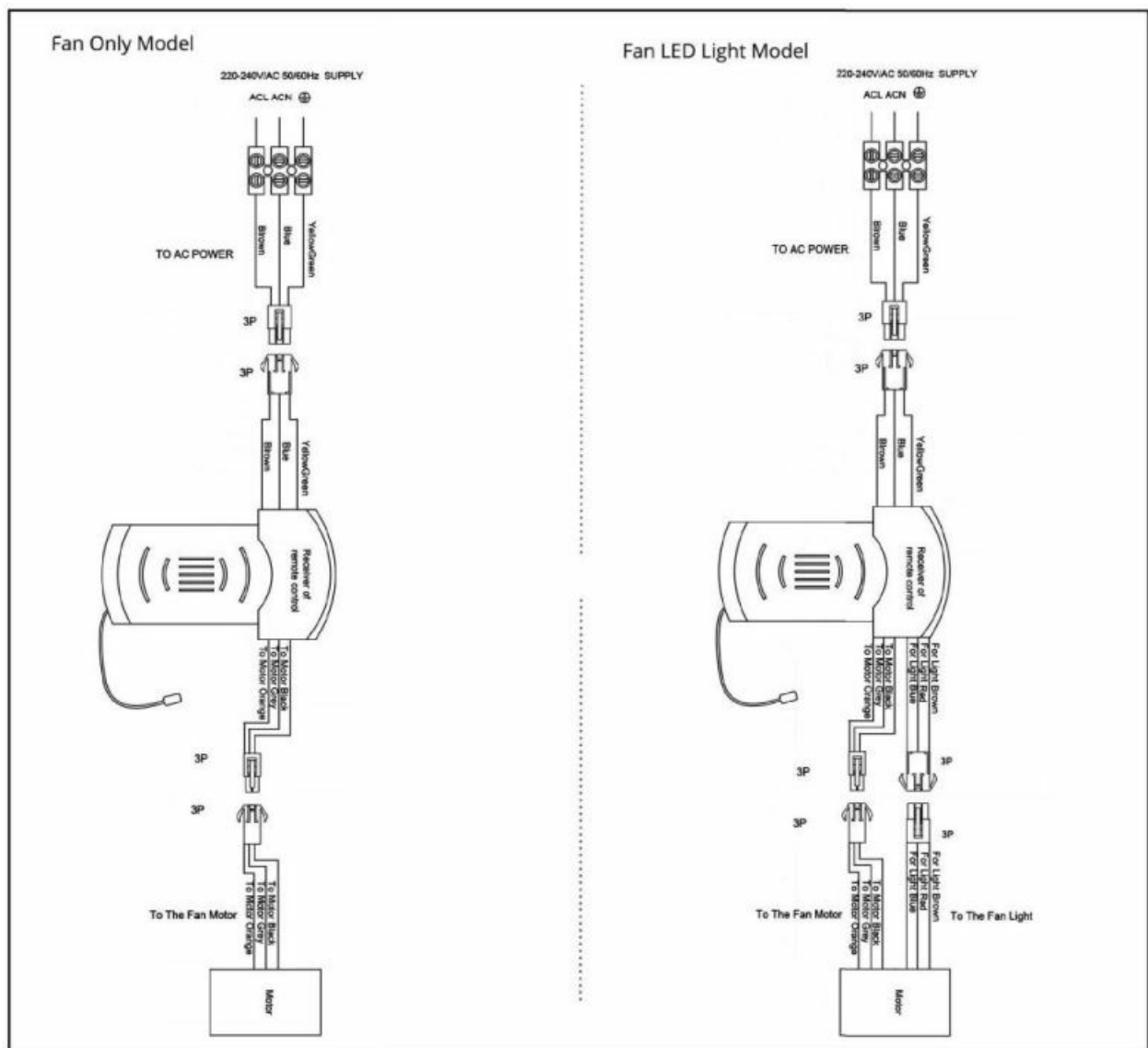
Complete



The installation is finished.

WARNING Installation **MUST** carry out by a qualified and licensed electrician.

Wire Connections



6* Year Warranty

Visit our website for details

https://www.martecaustralia.com.au/wp-content/uploads/2023/05/Warranty-Statement_Cooling.pdf

WARNING

- Installation of fans MUST follow SAA standards and meet local authority regulations. Installation MUST be carried out by a qualified and licensed electrician.
- Fan and light MUST be earthed.
- Bracket MUST be firmly attached to a flat solid structure or timber frame.
- DO NOT mix blades from one model to another, all blades MUST be replaced if damaged. The warranty is VOID if product is not installed according to this installation guide.

Smart Life matching process, please follow the steps:

1. Download the "Smart Life" APP on your smart devices by scanning the QR code below with a camera.
2. Turn on WiFi and Bluetooth on your smart devices. Ensure it's connected to a 2.4GHz WiFi.
3. Open the APP, follow the steps to register new user account or login existing account.

4. Follow the instructions in main manual (steps can also be found on the back of the remote) to put the fan into WiFi pairing mode. If the operation is successful, go to step fi. If the fan has previously been paired or you can't get it to work, please go to step 5 to RESET the fan.
5. RESET the fan. This step is NOT necessary if the fan has successfully entered WiFi pairing mode in the last step, if: not, try to RESET the fan turn on the fan, power off after 10 seconds, power on again after 15 seconds, long press :
"Fan Stop" for 5 seconds, if "beep beep" are heard, the 1l reset is successful. If "beep beep" is not heard, the reset is failed, please repeat this step.
6. Once the fan has entered WiFi pairing mode, open the APP again on the smart device. Click "Add Device" in the middle or the "+" on the top right of the screen.
7. The auto scan should begin automatically, and the fan should show up at the top of screen within a few seconds.

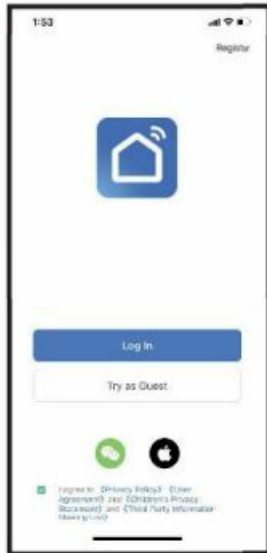
Note: If the fan is not showing up, you can add it manually by clicking and navigate to >Add Manually >Small Home Appliance > Fan

1. Download the "Smart Life" APP on your smart devices by scanning the QR code below with camera.



2. Turn on WiFi and Bluetooth on your smart devices. Ensure it's connected to a 2.4GHZ WiFi.

3. Open the APP, follow the steps to register new user account or login existing account.



4. Follow instructions in main manual (steps can also be found on the back of the remote) to put the fan into WiFi pairing mode. If the operation is successful, go to step 6. If the fan has previously been paired or you can't get it to work, please go to step 5 to RESET the fan.

5. RESET the fan. This step is NOT necessary if the fan has successfully entered WiFi pairing mode in the last step, if not, try to RESET the fan: turn on the fan, power off after 10 seconds, power on again after 15 seconds, long press "Fan Stop" for 5 seconds, if "beep beep" are heard, the reset is successful. If "beep beep" is not heard, the reset is not successful.

6. Once the fan has entered WiFi pairing mode, open the APP again on the smart device. Click "Add Device" in the middle or the "+" on the top right of the screen.



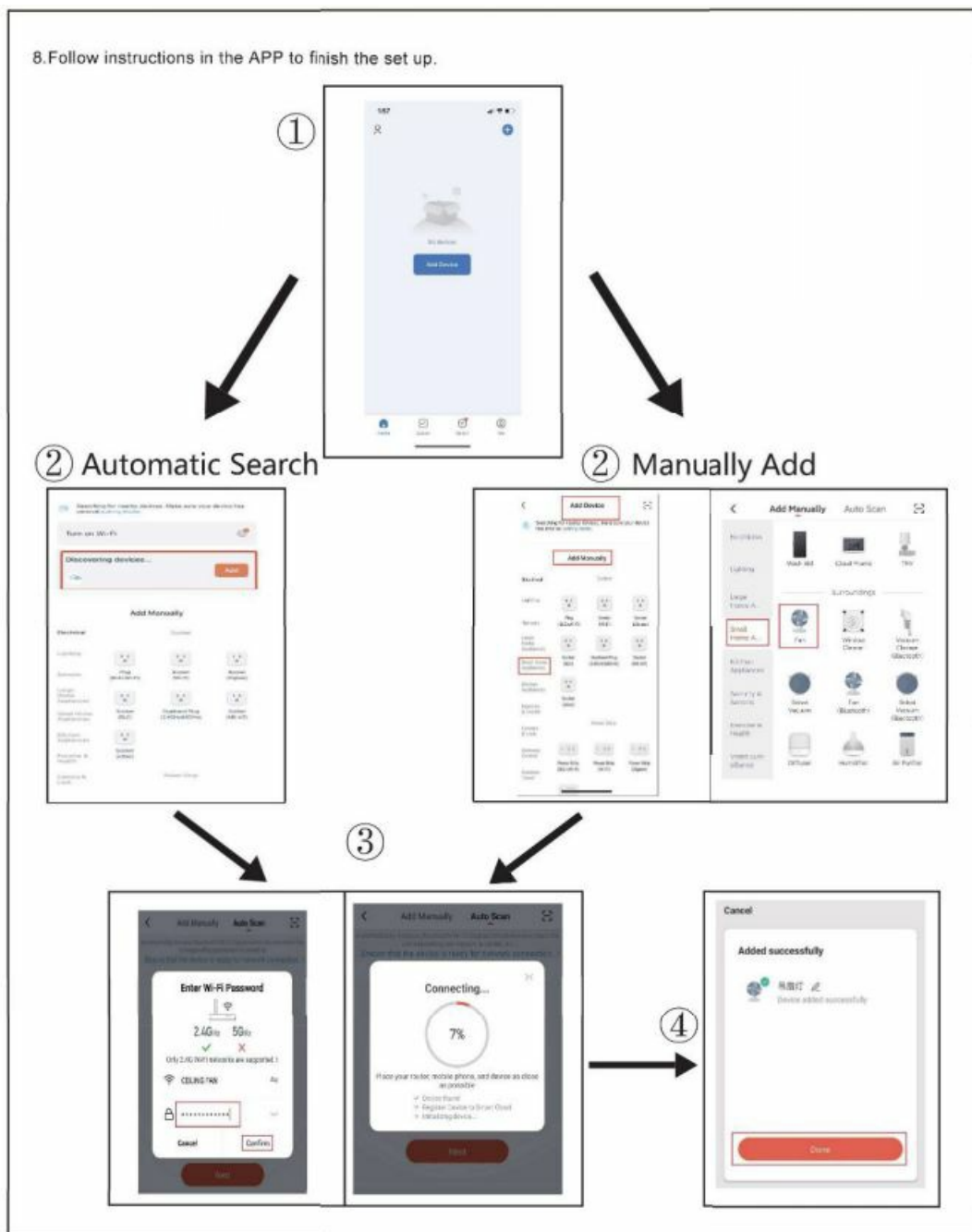
7. The auto scan should begin automatically, and the fan should show up at the top of screen within a few seconds.

Note: If the fan is not showing up, you can add it manually by clicking and navigate to: >Add Manually >Small Home Appliance > Fan



8. Follow instructions in the APP to finish the set-up.


8. Follow instructions in the APP to finish the set up.



WiFi / Remote Control Pairing


Fan only model

Pairing the remote control

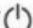
1. Turn on the ceiling fan.
2. Within the first 20 seconds, continue pressing the  button until you hear a "beep" sound. ie. It is paired.


If you don't hear a "beep" sound, repeat step 1 and step 2 again.

Entering WiFi Pairing mode:

1. Turn on the power.
2. Within the first 20 seconds, press and hold the  button until a "beep" is heard.
3. Continue step connect on your smart devices to complete the pairing.

If you don't hear a "beep" sound, repeat the above steps.

FAN OFF  : to switch off the fan.


SLEEP MODE  : Turn on the fan at an extra lower speed to create a general breeze.

SPEED BUTTON: 1 = lowest speed. 6 = highest speed.

NATURAL WIND MODE  : designed for the elderly and children. 1-6 speed changes randomly to feel the breeze.

FORWARD AND REVERSAL  : summer/winter reverse mode.

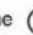
TIMER 1H/4H/8H: preset timer for fan and light to stop automatically. ie. if timer set at 1H and then press 4H, fan will stop at 4H. Setting default to last press.

WIFI BUTTON  : Follow the instructions and press and hold for 20 seconds to enter wifi matching mode.




Fan LED Light Model

Pairing the remote control


1. Turn on the ceiling fan.
2. Within the first 20 seconds continue pressing the  button until you hear a "beep" sound. ie. It is paired.


If you don't hear a "beep" sound, repeat step 1 and step 2 again

Entering WiFi Pairing mode:


1. Turn on the power.
2. Within the first 20 seconds, press and hold the  button until a "beep" is heard.
3. Continue step connect on your smart devices to complete the pairing.

If you don't hear a "beep" sound, repeat the above steps.

FAN OFF  : to switch off the fan.

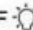
SLEEP MODE  : Turn on the fan at an extra lower speed to create a general breeze.

SPEED BUTTON: 1 = lowest speed. 6 = highest speed.

NATURAL WIND MODE  : designed for the elderly and children. 1-6 speed changes randomly to feel the breeze.

FORWARD AND REVERSAL  : summer/winter reverse mode.

TIMER 1H/4H/8H: preset timer for fan and light to stop automatically. ie. if timer set at 1H and then press 4H, fan will stop at 4H. Setting default to last press.

LIGHT ON/OFF  : to switch off the light.

CCT : warm white (2700K) / natural white (4000K) / cool white (6500K)

LED- **LED+** : minus "-" = reduces brightness
plus "+" = increases brightness



6* Year Warranty

Visit our website for details

https://www.martecaustralia.com.au/wp-content/uploads/2023/05/Warranty-5statement_Cooling.pdf

WARNING

- Installation of fans MUST follow SAA standards and meet local authority regulations. Installation MUST be carried out by a qualified and licensed electrician.
- Fan and light MUST be earthed.
- Bracket MUST be firmly attached to a flat solid structure or timber frame.
- DO NOT mix blades from one model to another, all blades MUST be replaced if damaged. The warranty is VOID if product is not installed according to this installation guide.

E: sales@martecld.com.au

I P: 02 8778 7500

www.martecaustralia.com.au

Documents / Resources

	<p>Martec MDDC133M Smart Ceiling Fan With WIFI Remote Control LED Light [pdf] Installation Guide</p> <p>MDDC133M, MDDC1333M, MDDC133M Smart Ceiling Fan With WIFI Remote Control LED Light, MDDC133M, Smart Ceiling Fan With WIFI Remote Control LED, Light, Fan With WIFI Remote Control LED Light, WIFI Remote Control LED Light</p>
---	--

References

- [Martec® Australia | Life, enhanced®](#)
- [User Manual](#)