

marta
MT-KP1533A
Countertop Blender



marta MT-KP1533A Countertop Blender User Manual

[Home](#) » [MARTA](#) » marta MT-KP1533A Countertop Blender User Manual 

Contents

- [1 marta MT-KP1533A Countertop Blender](#)
- [2 BEFORE THE FIRST USE](#)
- [3 Description](#)
- [4 USING THE DEVICE](#)
- [5 CLEANING AND MAINTENANCE](#)
- [6 SPECIFICATION](#)
- [7 Documents / Resources](#)
 - [7.1 References](#)

marta

marta MT-KP1533A Countertop Blender



CAUTION

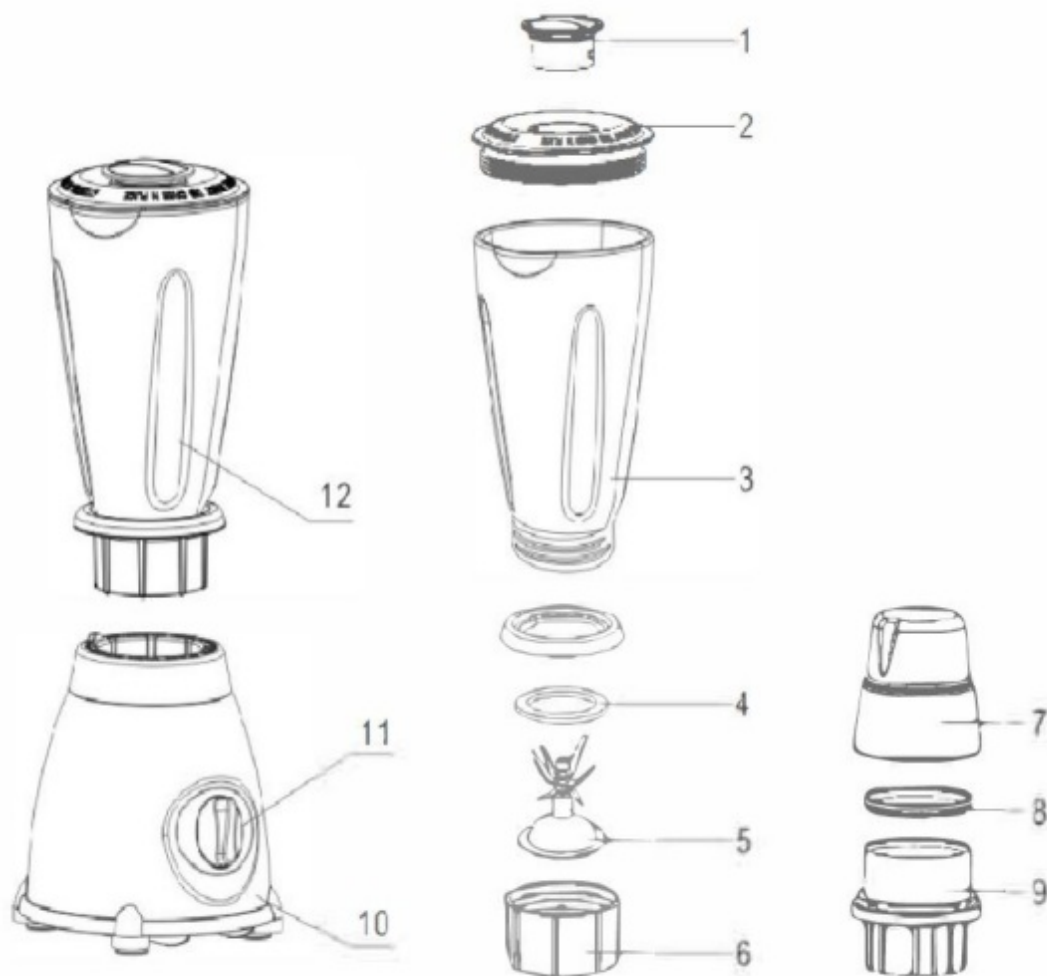
- Read this manual carefully before using the appliance and save it for future reference.
- Before the first use, check the device specifications and the power supply in your network.
- It is not intended for industrial use.
- For indoor use only. Use only for domestic purposes according to the instruction manual.
- Keep the power cord away from sharp edges and hot surfaces.
- Do not pull the cord. Always take the socket. Do not reel the cord around the device housing.
- Never attempt to frame and repair the appliance by yourself. If you encounter problems, please contact the nearest customer service center.
- Using accessories or replacement parts that are not recommended or sold by the manufacturer may cause damage to the appliance.
- Always unplug the appliance and let it cool down before cleaning and removing parts. Keep unplugged when not in use.
- To avoid electric shock and fire, do not immerse in water or other liquids. If this occurs, immediately unplug it and contact the service center for inspection.
- This appliance is not intended for use by persons (including children) with reduced physical, sensory, or mental capabilities, or lack of experience and knowledge unless they have been given supervision or instruction concerning the use of the appliance by a person responsible for their safety.
- Be cautious when using a blade.

- Every time after use, make sure the appliance is turned off, and the blades are stopped completely. Only then open the lid.
- Do not overload the appliance. The appliance is designed for processing relatively small quantities of food and the maximum quantities given in the table should not be exceeded.
- Never blend hot liquids!
- Maximum time of continuous operation – no more than 1 minute with an interval of at least 5 minutes.
- Do not use the device if the cord is damaged. Do not use the device if the cup is empty. Do not leave the device unattended.
- Always disconnect the device from the power supply if you do not use it before cleaning.

BEFORE THE FIRST USE

- Please unpack your appliance and remove all packing materials
- Clean the motor unit with a damp cloth, wash the blades, and jar with soapy water, rinse, and dry.
- Do not immerse the motor unit in water.

Description



1. Inner lid
2. Lid
3. Glass jar

4. Sealing ring
5. Blade unit
6. Jug base
7. Mill jar
8. Sealing ring
9. Mill blade unit
10. Main unit
11. Speed control knob
12. Assembled jar

USING THE DEVICE

The blender is suitable for making liquid and puree-like products: sauces, juices, soups, cocktails, smoothies, kneading dough for pancakes, making puree. Real set of the appliance could be different from listed in the User manual. Check once buy.

- Place the appliance on a flat, stable surface.
- Install the jug base (6) and the blade unit (5) on the motor block, place the sealing ring (4), and then install the glass jar (3) by turning it clockwise until it stops.
- Load the products into the glass jar. Large ingredients should be cut into 2-3 cm pieces. Top up the liquid.

ATTENTION: the blender is not designed for chopping ice and grinding hot food and liquids with temperatures above 60C°! This may cause damage to the device.

- Cover the bowl tightly with the lid (2), and close it by turning the inner lid (1) clockwise.
- To use the dry food chopper, turn it upside down with the mill jar (7), and remove the mill blade unit (9). Pour the ingredients into the container and attach the blade unit of the chopper by turning it clockwise until it stops.
- Install the chopper on the blender main unit (10).
- Connect the device to the power supply.
- For operation, select the speed from 1 to 2 using the speed control knob (8) or pulse mode P. To turn off, set the speed control knob (8) to position 0.
- Start grinding at a low speed, and then switch to a higher speed. Briefly use pulse mode P if necessary.
- No more than 0.8 liters of hot liquids or foam-forming ingredients can be placed in the blender glass jar. Never load the blender glass jar above the maximum mark!
- If the products are stuck in the blender glass jar and the blade unit does not scroll well, it is necessary to turn off the blender, mix the contents of the bowl with a silicone spatula and, if necessary, add more liquid.
- When grinding products of viscous consistency, it is recommended to periodically mix the contents with a silicone spatula.
- **ATTENTION:** never try to mix with a spatula or adjust the contents of the blender with your hands when the blades are rotating!
- Wait for the blades to stop completely before opening the lid. Before removing the bowl from the base, disconnect the appliance from the power supply.
- **ATTENTION:** When processing most products, it is recommended to first turn on the device several times for short periods in order not to overload the device motor.
- As the product is crushed, the duration of continuous operation can be increased until the required level of

grinding is reached (the continuous operation time should not exceed 1 minute).

- In pulse mode, the device can operate for no more than 20 seconds.
- **ATTENTION! THIS DEVICE IS EQUIPPED WITH OVERHEATING PROTECTION. IF THE CUTTING BLADES ARE BLOCKED, DISCONNECT THE BLENDER FROM THE POWER SUPPLY AND LET IT COOL DOWN. DO NOT TRY TO ELIMINATE THE CAUSE OF THE BLOCKAGE WHILE THE BLENDER IS CONNECTED TO THE POWER SUPPLY!**

CLEANING AND MAINTENANCE

- Unplug the appliance from the power supply
- Wipe the motor outside with a damp cloth.
- Wash the jar, blades, and lid right after use with warm soapy water and wipe it with a dry cloth.
- Do not use aggressive and abrasive agents for cleaning
- **CAUTION:** The blades are sharp and therefore dangerous. Handle with caution.

STORAGE

- Before storing, dry thoroughly the container, container lid, and cutting blade. Store the appliance in a cool, dry place.

SPECIFICATION


- Power supply 230 V ~ 50 Hz

WARRANTY DOES NOT COVER SUPPLIES

(filters, ceramic and non-stick coating, rubber seals, etc.) The production date is available in the serial number located on the identification sticker on the gift box and/or on the sticker on the device. The serial number consists of 13 characters, the 4th and 5th characters indicate the month, and the 6th and 7th indicate the year of device production.

The producer may change the complete set, appearance, country of manufacture, warranty, and technical characteristics of the model without notice. Please check when purchasing the device. Current information about service centers is available on the website <https://multimarta.com/> Producer: Cosmos Far View International Limited. Room 701, 16 apt, Lane 165, Rainbow North Street, Ningbo, China

Documents / Resources

	marta MT-KP1533A Countertop Blender [pdf] User Manual MT-KP1533A, MT-KP1533B, MT-KP1533A Countertop Blender, MT-KP1533A, Countertop Blender, Blender
---	---

References

-  multimarta.com/
- [User Manual](#)

This website is an independent publication and is neither affiliated with nor endorsed by any of the trademark owners. The "Bluetooth®" word mark and logos are registered trademarks owned by Bluetooth SIG, Inc. The "Wi-Fi®" word mark and logos are registered trademarks owned by the Wi-Fi Alliance. Any use of these marks on this website does not imply any affiliation with or endorsement.